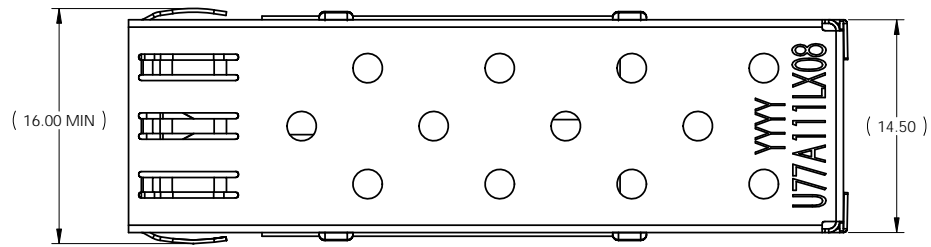




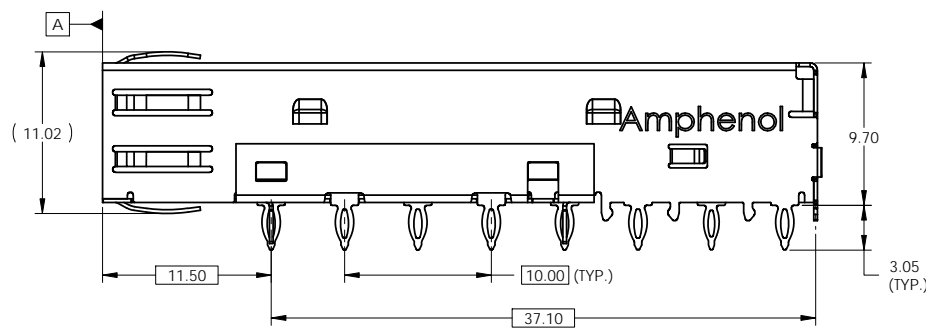
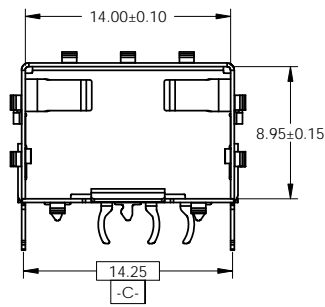
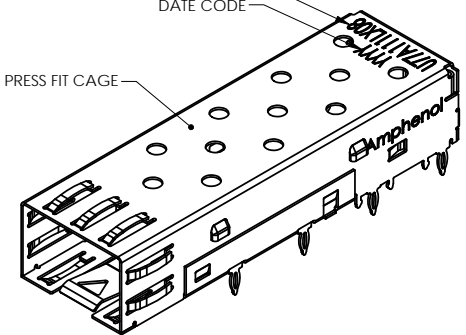
REVISIONS				
REV	ECN	DESCRIPTION	DATE	APPROVED
A		INITIAL RELEASE	MAR 10'11	JASON



PART NUMBER
(LAST DIGIT INDICATING PACKAGING
TYPE NOT INCLUDED ON THE PART)

DATE CODE

SFP PRESS FIT CAGE



MATERIAL: (RoHS COMPLIANT)
 CAGE: COPPER ALLOY
 PLATING:
 PLATING OPTION 2: 2.54 μm NICKEL PLATING.
 PLATING OPTION 3: 2.54 - 7.62 μm
 MATTE TIN PLATING OVER 1.27 μm NICKEL.
 PACKAGING: TRAY PACKAGING.
 TEMPERATURE RANGE: -40°C TO 85°C.

AMPHENOL PART NUMBER CONFIGURATION

U 7 7 - A 1 1 1 L - X 0 8 1

CAGE PLATING:
 2 = NICKEL
 3 = MATTE TIN

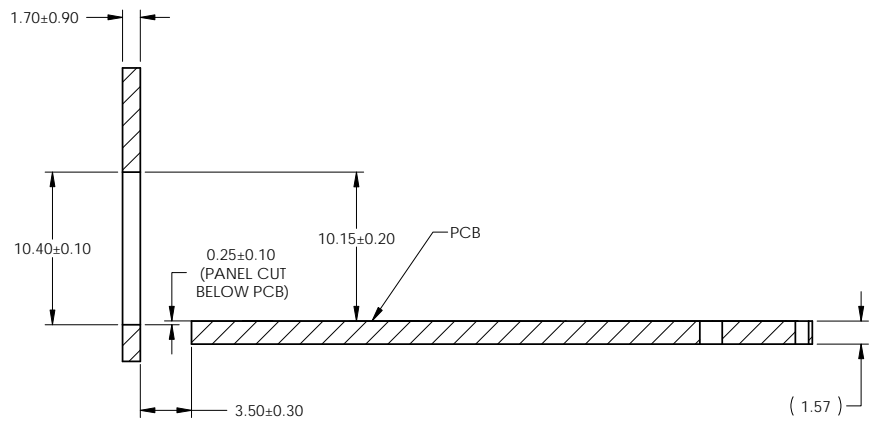
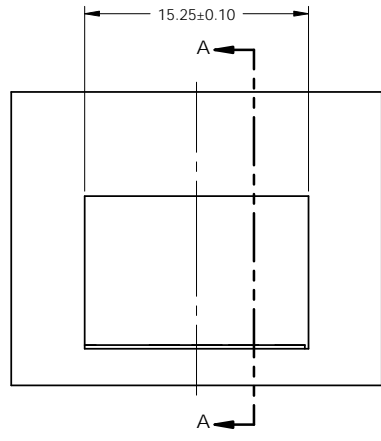
PACKAGING:
 1 = TRAY PACKAGING

DO NOT SCALE DRAWING

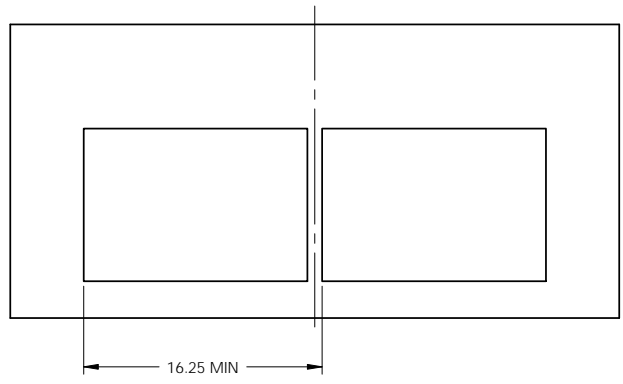
THIS DOCUMENT CONTAINS PROPRIETARY INFORMATION AND SUCH INFORMATION MAY NOT BE DISCLOSED TO OTHERS FOR ANY PURPOSE OR USED FOR MANUFACTURING PURPOSES WITHOUT PERMISSION FROM AMPHENOL CANADA CORP.

UNLESS OTHERWISE SPECIFIED DIMENSIONS ARE IN MILLIMETERS TOLERANCES ARE: DECIMALS: X.X ± 0.15 X.XX ± 0.10 MATERIAL AND FINISH: SEE NOTE REF: CODE IDENT NO: 03554	APPROVALS	DATE	Amphenol Canada Corp.		
	DRAWN: MIKE.H	MAR 10'11			
	DESIGNED: JASON	MAR 10'11	1X1 SFP CAGE		
	CHECKED: X	X	SIZE: A3	DWG. NO: P-U77-A111L-X081	REV: A
	QA APPD: X	X	SCALE: 3:1	PROJECT	SHEET: 1 OF 5
	E APPD: X	X			
	DWG APPD: JASON	MAR 10'11			

REVISIONS				
REV.	ECN	DESCRIPTION	DATE	APPROVED
A		INITIAL RELEASE	MAR 10'11	JASON



**RECOMMENDED BEZEL DESIGN
(SINGLE SIDE CAGE MOUNT)**

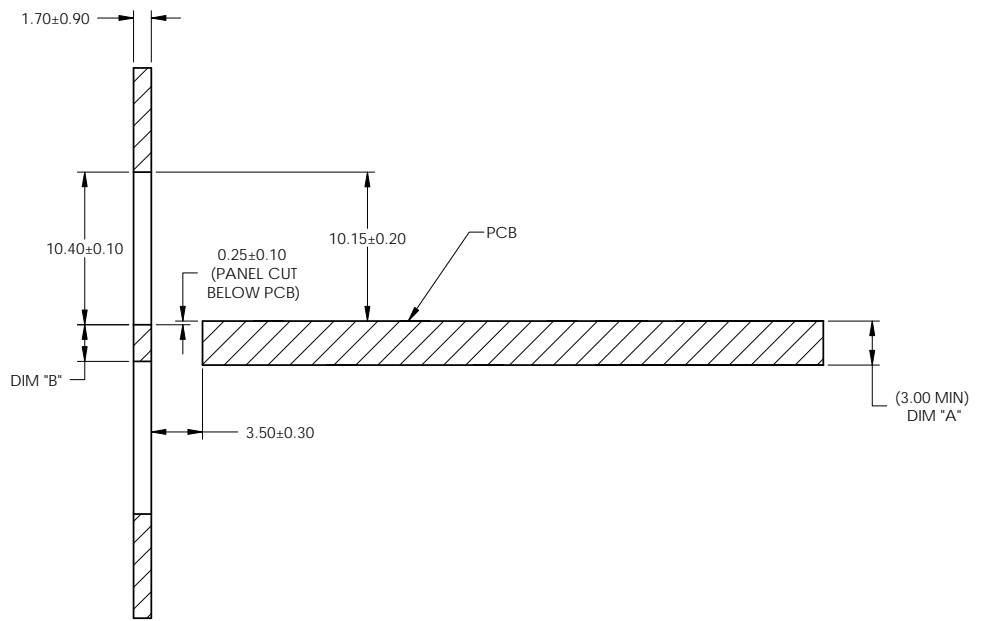
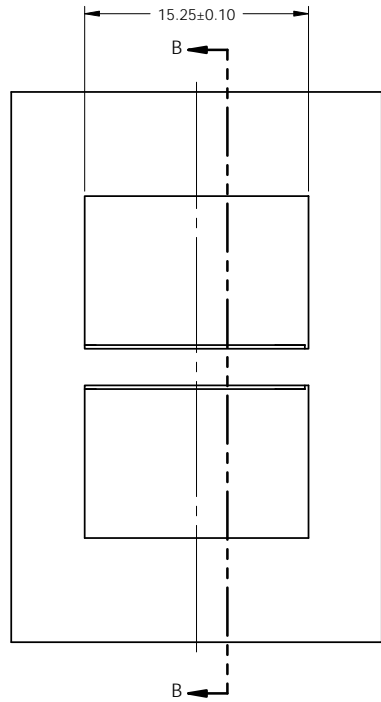


DO NOT SCALE DRAWING

THIS DOCUMENT CONTAINS PROPRIETARY INFORMATION AND SUCH INFORMATION MAY NOT BE DISCLOSED TO OTHERS FOR ANY PURPOSE OR USED FOR MANUFACTURING PURPOSES WITHOUT PERMISSION FROM AMPHENOL CANADA CORP.

UNLESS OTHERWISE SPECIFIED DIMENSIONS ARE IN MILLIMETERS TOLERANCES ARE:		APPROVALS		DATE		Amphenol Canada Corp.			
DECIMALS	ANGLES	DRAWN	MIKE.H	MAR 10'11	TITLE				
X.X ± 0.15	± 0.5°	DESIGNED	JASON	MAR 10'11	1X1 SFP CAGE				
X.XX ± 0.10		CHECKED	X	X					
MATERIAL AND FINISH		QA APPD	X	X					
SEE NOTE		REF.	X	X					
CODE IDENT. NO.	03554	E APPD	JASON	MAR 10'11	SIZE	DWG. NO.	P-U77-A111L-X081	REV.	A
		DWG APPD	JASON	MAR 10'11	SCALE	PROJECT		SHEET	2 OF 5

REVISIONS				
REV	ECN	DESCRIPTION	DATE	APPROVED
A		INITIAL RELEASE	MAR 10'11	JASON



SECTION B-B

**RECOMMENDED BEZEL DESIGN
(BELLY TO BELLY CAGE MOUNT)**

NOTE:
 PANEL CUTOUTS SIZES PER SFF 8433 SPEC.
 FOR BELLY TO BELLY MOUNTING,
 DIM "A" (PCB THICKNESS) IS 3.0 mm MIN.
 DIM "B" RELATED TO DIM "A". FOR
 DIM "B"=DIM "A"-0.80mm. THE PANEL
 CUTOUT 10.40mm MIGHT BE INCREASED
 UP TO 10.80mm IN ORDER TO
 ACCOMMODATE PCB TOLERANCE.

DO NOT SCALE DRAWING

THIS DOCUMENT CONTAINS PROPRIETARY INFORMATION AND SUCH INFORMATION MAY NOT BE DISCLOSED TO OTHERS FOR ANY PURPOSE OR USED FOR MANUFACTURING PURPOSES WITHOUT PERMISSION FROM AMPHENOL CANADA CORP.

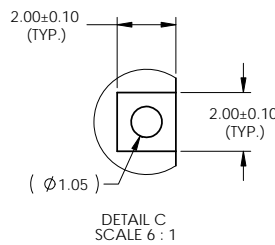
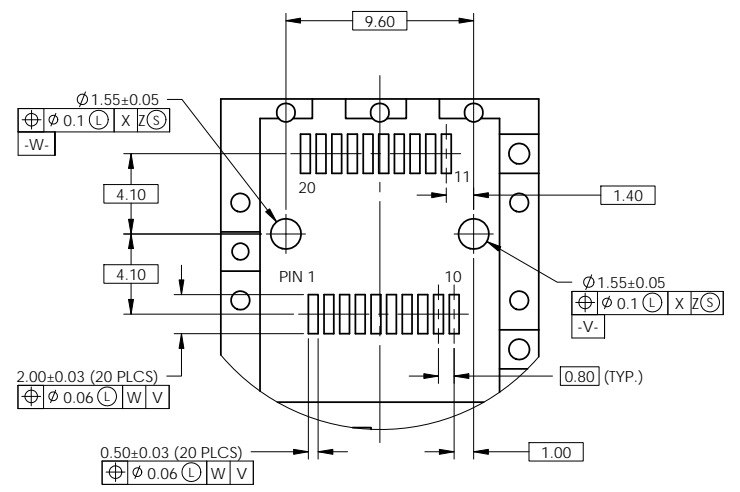
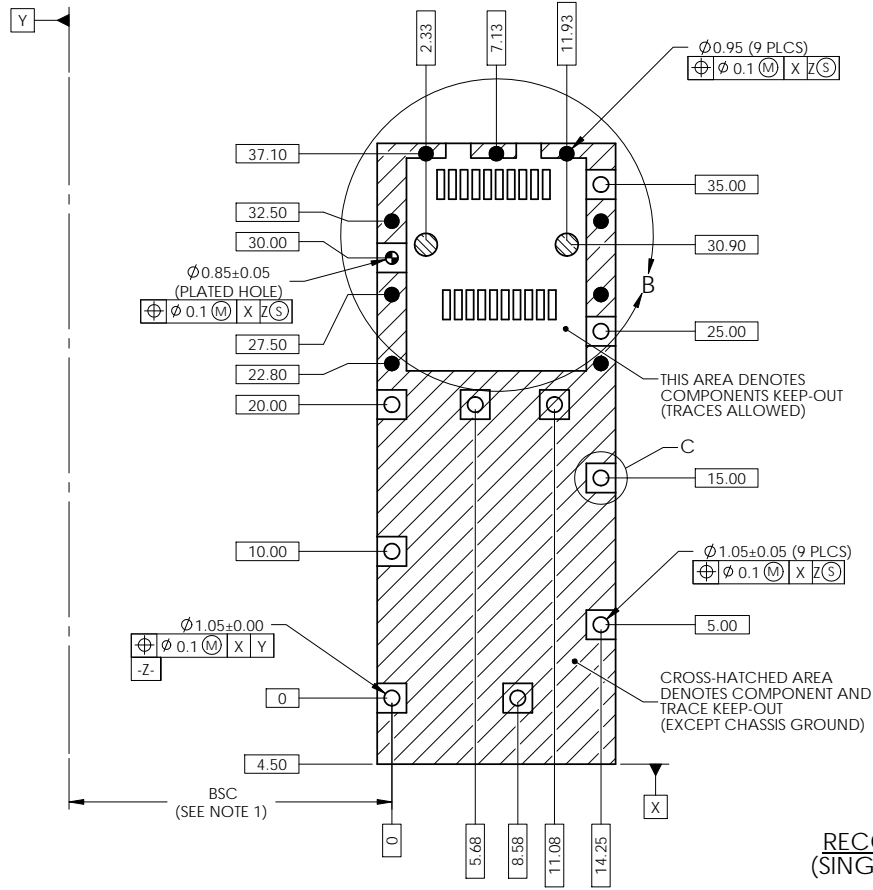
UNLESS OTHERWISE SPECIFIED DIMENSIONS ARE IN MILLIMETERS TOLERANCES ARE:		APPROVALS		DATE		Amphenol Canada Corp.			
DECIMALS X.X ± 0.15 X.XX ± 0.10		ANGLES ± 0.5°		DRAWN	MIKE.H				
MATERIAL AND FINISH		SEE NOTE		DESIGNED	JASON	MAR 10'11	1X1 SFP CAGE		
REF.				CHECKED	X	X			
CODE IDENT. NO.		03554		QA APPD	X	X			
				E APPD	X	X	SIZE	A3	
				DWG APPD	JASON	MAR 10'11	SCALE	3:1	
						PROJECT		P-U77-A111L-X081	
						SHEET		3 OF 5	
						REV		A	

- NOTES:
 1. DATUM AND BASIC DIMENSIONS ESTABLISHED BY CUSTOMER.
 2. PADS AND VIAS ARE CHASSIS GROUND.
 3. THRU-HOLES PLATING OPTIONAL.
 4. SEE DRAWING P-U76-A20-X00XX FOR CONNECTOR LAYOUT.

HOLE SIZES

- ⊘ 1.55
- ⊘ 1.05
- 0.95
- ⊘ 0.85

REVISIONS				
REV	ECN	DESCRIPTION	DATE	APPROVED
A		INITIAL RELEASE	MAR 10'11	JASON



RECOMMENDED PCB LAYOUT
(SINGLE SIDE CAGE MOUNTING)

DO NOT SCALE DRAWING

THIS DOCUMENT CONTAINS PROPRIETARY INFORMATION AND SUCH INFORMATION MAY NOT BE DISCLOSED TO OTHERS FOR ANY PURPOSE OR USED FOR MANUFACTURING PURPOSES WITHOUT PERMISSION FROM AMPHENOL CANADA CORP.

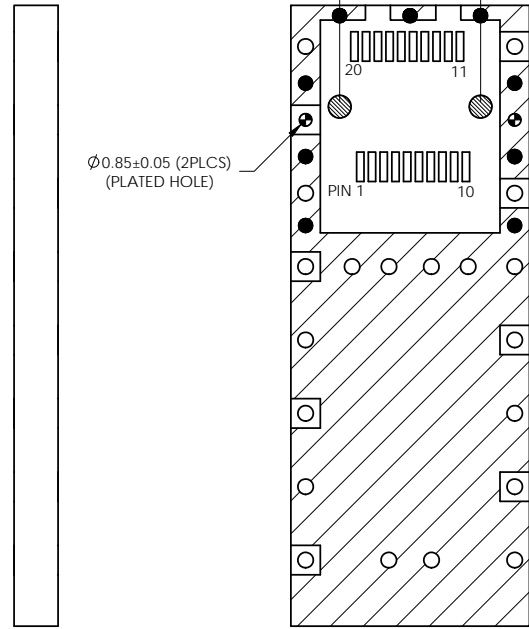
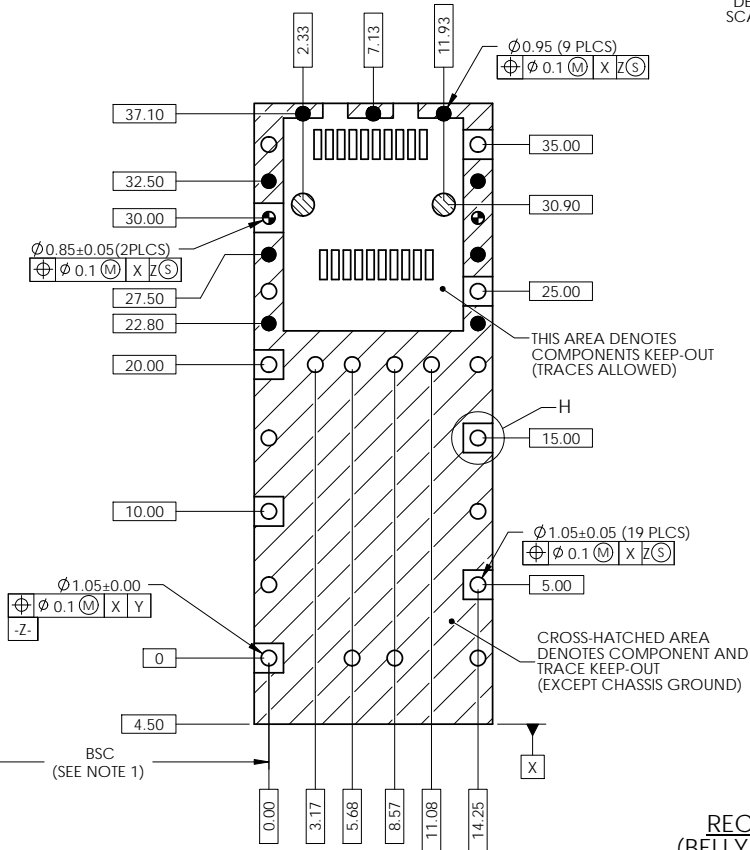
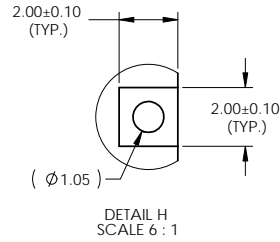
UNLESS OTHERWISE SPECIFIED DIMENSIONS ARE IN MILLIMETERS TOLERANCES ARE: DECIMALS X.X ± 0.15 ANGLES ± 0.5° X.XX ± 0.10 MATERIAL AND FINISH SEE NOTE REF. CODE IDENT NO: 03554	APPROVALS	DATE	Amphenol Canada Corp.		
	DRAWN MIKE.H	MAR 10'11	TITLE		
	DESIGNED JASON	MAR 10'11	1X1 SFP CAGE		
	CHECKED X	X			
	QA APPD X	X	SIZE A3	DWG. NO. P-U77-A111L-X081	REV. A
	E APPD X	X	SCALE 3:1	PROJECT	SHEET 4 OF 5
	DWG APPD JASON	MAR 10'11			

- NOTES:
 1. DATUM AND BASIC DIMENSIONS ESTABLISHED BY CUSTOMER.
 2. PADS AND VIAS ARE CHASSIS GROUND.
 3. THRU-HOLES PLATING OPTIONAL.
 4. SEE DRAWING P-U76-A20-X00XX FOR CONNECTOR LAYOUT.

HOLE SIZES

- ⊘ $\phi 1.55$
- $\phi 1.05$
- $\phi 0.95$
- ⊕ $\phi 0.85$

REVISIONS				
REV	ECN	DESCRIPTION	DATE	APPROVED
A		INITIAL RELEASE	MAR 10'11	JASON



RECOMMENDED PCB LAYOUT
 (BELLY TO BELLY CAGE MOUNTING)

DO NOT SCALE DRAWING

THIS DOCUMENT CONTAINS PROPRIETARY INFORMATION AND SUCH INFORMATION MAY NOT BE DISCLOSED TO OTHERS FOR ANY PURPOSE OR USED FOR MANUFACTURING PURPOSES WITHOUT PERMISSION FROM AMPHENOL CANADA CORP.

UNLESS OTHERWISE SPECIFIED DIMENSIONS ARE IN MILLIMETERS TOLERANCES ARE:		APPROVALS		DATE	Amphenol Canada Corp.	
DECIMALS X.X ± 0.15 X.XX ± 0.10		ANGLES ± 0.5°		DRAWN MIKE.H	MAR 10'11	TITLE 1X1 SFP CAGE
MATERIAL AND FINISH SEE NOTE		CHECKED X X		DESIGNED JASON	MAR 10'11	
REF.		E APPD X X		G/A APPD X X		
CODE IDENT NO: 03554		DWG APPD JASON		MAR 10'11		
SIZE A3	DWG NO P-U77-A111L-X081	SCALE 3:1	PROJECT	REV A	SHEET 5 OF 5	

Компания «Life Electronics» занимается поставками электронных компонентов импортного и отечественного производства от производителей и со складов крупных дистрибьюторов Европы, Америки и Азии.

С конца 2013 года компания активно расширяет линейку поставок компонентов по направлению коаксиальный кабель, кварцевые генераторы и конденсаторы (керамические, пленочные, электролитические), за счёт заключения дистрибьюторских договоров

Мы предлагаем:

- Конкурентоспособные цены и скидки постоянным клиентам.
- Специальные условия для постоянных клиентов.
- Подбор аналогов.
- Поставку компонентов в любых объемах, удовлетворяющих вашим потребностям.
- Приемлемые сроки поставки, возможна ускоренная поставка.
- Доставку товара в любую точку России и стран СНГ.
- Комплексную поставку.
- Работу по проектам и поставку образцов.
- Формирование склада под заказчика.
- Сертификаты соответствия на поставляемую продукцию (по желанию клиента).
- Тестирование поставляемой продукции.
- Поставку компонентов, требующих военную и космическую приемку.
- Входной контроль качества.
- Наличие сертификата ISO.

В составе нашей компании организован Конструкторский отдел, призванный помогать разработчикам, и инженерам.

Конструкторский отдел помогает осуществить:

- Регистрацию проекта у производителя компонентов.
- Техническую поддержку проекта.
- Защиту от снятия компонента с производства.
- Оценку стоимости проекта по компонентам.
- Изготовление тестовой платы монтаж и пусконаладочные работы.



Тел: +7 (812) 336 43 04 (многоканальный)
Email: org@lifeelectronics.ru