



## ATmega16M1/32M1/32C1/64M1/64C1

---

### Appendix A - Atmel ATmega16M1/ATmega32M1/ ATmega32C1/ATmega64M1/ATmega64C1 Automotive Specification at 150°C

---

**DATASHEET**

#### Description

---

This document contains information specific to devices operating at temperatures up to 150°C. Only deviations are covered in this appendix, all other information can be found in the complete Automotive datasheet. The complete Automotive datasheet can be found on <http://www.atmel.com>

# 1. Electrical Characteristics

## 1.1 Absolute Maximum Ratings

Stresses beyond those listed under “Absolute Maximum Ratings” may cause permanent damage to the device. This is a stress rating only and functional operation of the device at these or any other conditions beyond those indicated in the operational sections of this specification is not implied. Exposure to absolute maximum rating conditions for extended periods may affect device reliability.

Parameters	Test Conditions	Unit
Operating temperature	−55 to +150	°C
Storage temperature	−65 to +175	°C
Voltage on any pin except $\overline{\text{RESET}}$ with respect to ground	−0.5 to $V_{CC}+0.5$	V
Voltage on $\overline{\text{RESET}}$ with respect to ground	−0.5 to +13.0	V
Maximum operating voltage	6.0	V
DC current per I/O pin	30	mA
DC current $V_{CC}$ and GND	200.0	

## 1.2 DC Characteristics

$T_A = -40^\circ\text{C}$  to  $+150^\circ\text{C}$ ,  $V_{CC} = 4.5\text{V}$  to  $5.5\text{V}$  (unless otherwise noted)

Parameters	Test Conditions	Symbol	Min.	Typ.	Max.	Unit
Input low voltage, except XTAL1 and $\overline{\text{RESET}}$ pin	$V_{CC} = 4.5\text{V}$ to $5.5\text{V}$	$V_{IL}$	−0.5		$+0.2V_{CC}^{(1)}$	V
Input high voltage, except XTAL1 and $\overline{\text{RESET}}$ pins	$V_{CC} = 4.5\text{V}$ to $5.5\text{V}$	$V_{IH}$	$0.6V_{CC}^{(2)}$		$V_{CC} + 0.5$	V
Input low voltage, XTAL1 pin	$V_{CC} = 4.5\text{V}$ to $5.5\text{V}$	$V_{IL1}$	−0.5		$+0.1V_{CC}^{(1)}$	V
Input high voltage, XTAL1 pin	$V_{CC} = 4.5\text{V}$ to $5.5\text{V}$	$V_{IH1}$	$0.8V_{CC}^{(2)}$		$V_{CC} + 0.5$	V
Input low voltage, $\overline{\text{RESET}}$ pin	$V_{CC} = 4.5\text{V}$ to $5.5\text{V}$	$V_{IL2}$	−0.5		$+0.2V_{CC}^{(1)}$	V
Input high voltage, $\overline{\text{RESET}}$ pin	$V_{CC} = 4.5\text{V}$ to $5.5\text{V}$	$V_{IH2}$	$0.9V_{CC}^{(2)}$		$V_{CC} + 0.5$	V
Input low voltage, $\overline{\text{RESET}}$ pin as I/O	$V_{CC} = 4.5\text{V}$ to $5.5\text{V}$	$V_{IL3}$	−0.5		$+0.2V_{CC}^{(1)}$	V
Input high voltage, $\overline{\text{RESET}}$ pin as I/O	$V_{CC} = 4.5\text{V}$ to $5.5\text{V}$	$V_{IH3}$	$0.8V_{CC}^{(2)}$		$V_{CC} + 0.5$	V

- Notes:
- “Max” means the highest value where the pin is guaranteed to be read as low
  - “Min” means the lowest value where the pin is guaranteed to be read as high
  - Although each I/O port can sink more than the test conditions (20mA at  $V_{CC} = 5\text{V}$ ) under steady state conditions (non-transient), the following must be observed:
    - The sum of all IOL, for all ports, should not exceed 400mA.
    - The sum of all IOL, for ports C0 - C5, should not exceed 200mA.
    - The sum of all IOL, for ports C6, D0 - D4, should not exceed 300mA.
    - The sum of all IOL, for ports B0 - B7, D5 - D7, should not exceed 300mA.
 If IOL exceeds the test condition, VOL may exceed the related specification. Pins are not guaranteed to sink current greater than the listed test condition.
  - For temperature range  $+125^\circ\text{C}$  to  $+150^\circ\text{C}$  only. For  $-40^\circ\text{C}$  to  $+125^\circ\text{C}$ , refer to ATmega16M1/ATmega16M1/32M1/32C1/64M1/64C1/ATA8888/ATmega64M1/ATmega64C1 Automotive datasheet.

## 1.2 DC Characteristics (Continued)

$T_A = -40^\circ\text{C}$  to  $+150^\circ\text{C}$ ,  $V_{CC} = 4.5\text{V}$  to  $5.5\text{V}$  (unless otherwise noted)

Parameters	Test Conditions	Symbol	Min.	Typ.	Max.	Unit
Output low voltage <sup>(3)</sup> , I/O pin except RESET	$I_{OL} = 10\text{mA}$ , $V_{CC} = 5\text{V}$	$V_{OL}$			0.8	V
Output high voltage <sup>(4)</sup> , I/O pin except RESET	$I_{OH} = -10\text{mA}$ , $V_{CC} = 5\text{V}$	$V_{OH}$	4.1			V
Output high voltage (reset pin)	$I_{OH} = 0.6\text{mA}$ , $V_{CC} = 5\text{V}$	$V_{OH3}$	3			V
Input leakage current I/O pin	$V_{CC} = 5.5\text{V}$ , pin low (absolute value)	$I_{IL}$			1	$\mu\text{A}$
Input leakage current I/O pin	$V_{CC} = 5.5\text{V}$ , pin high (absolute value)	$I_{IH}$			1	$\mu\text{A}$
Reset pull-up resistor		$R_{RST}$	30		200	$\text{k}\Omega$
I/O pin pull-up resistor		$R_{PU}$	20		50	$\text{k}\Omega$
Power supply current <sup>(4)</sup>	Active 16MHz, $V_{CC} = 5\text{V}$ , External clock, PRR = 0xFF,	$I_{CC}$		14	30	mA
	Idle 16MHz, $V_{CC} = 5\text{V}$ , External clock	$I_{CC\text{ IDLE}}$		5.5	15	mA
Power-down mode	WDT enabled, $V_{CC} = 5\text{V}$	$I_{CC\text{ PWD}}$		80	330	$\mu\text{A}$
	WDT disabled, $V_{CC} = 5\text{V}$			70	310	$\mu\text{A}$
Analog comparator Input leakage current	$V_{CC} = 5\text{V}$ $V_{in} = V_{CC}/2$	$I_{ACLK}$	-200		+200	nA

- Notes:
1. "Max" means the highest value where the pin is guaranteed to be read as low
  2. "Min" means the lowest value where the pin is guaranteed to be read as high
  3. Although each I/O port can sink more than the test conditions (20mA at  $V_{CC} = 5\text{V}$ ) under steady state conditions (non-transient), the following must be observed:
    - 1] The sum of all IOL, for all ports, should not exceed 400mA.
    - 2] The sum of all IOL, for ports C0 - C5, should not exceed 200mA.
    - 3] The sum of all IOL, for ports C6, D0 - D4, should not exceed 300mA.
    - 4] The sum of all IOL, for ports B0 - B7, D5 - D7, should not exceed 300mA.
 If IOL exceeds the test condition, VOL may exceed the related specification. Pins are not guaranteed to sink current greater than the listed test condition.
  4. For temperature range  $+125^\circ\text{C}$  to  $+150^\circ\text{C}$  only. For  $-40^\circ\text{C}$  to  $+125^\circ\text{C}$ , refer to ATmega16M1/ATmega16M1/32M1/32C1/64M1/64C1/ATA8888/ATmega64M1/ATmega64C1 Automotive datasheet.

### 1.3 ADC Characteristics in Single-ended Mode

$T_A = -40^{\circ}\text{C}$  to  $+150^{\circ}\text{C}$ ,  $V_{CC} = 4.5\text{V}$  to  $5.5\text{V}$  (unless otherwise noted)

Parameters	Test Conditions	Symbol	Min	Typ	Max	Unit
Resolution	Single ended, Temp = $-40^{\circ}\text{C}$ to $150^{\circ}\text{C}$			10		Bit
Absolute accuracy	$V_{CC} = 5\text{V}$ , $V_{Ref} = 2.56\text{V}$ , ADC clock = 1MHz	TUE		3.2	6.0	LSB
	$V_{CC} = 5\text{V}$ , $V_{Ref} = 2.56\text{V}$ , ADC clock = 2MHz			3.2	6.0	
Integral Non Linearity	$V_{CC} = 5\text{V}$ , $V_{Ref} = 2.56\text{V}$ , ADC clock = 1MHz	INL		0.7	3.0	LSB
	$V_{CC} = 5\text{V}$ , $V_{Ref} = 2.56\text{V}$ , ADC clock = 2MHz			0.8	3.0	
Differential Non Linearity	$V_{CC} = 5\text{V}$ , $V_{Ref} = 2.56\text{V}$ , ADC clock = 1MHz	DNL		0.5	1.5	LSB
	$V_{CC} = 5\text{V}$ , $V_{Ref} = 2.56\text{V}$ , ADC clock = 2MHz			0.6	1.5	
Gain error	$V_{CC} = 5\text{V}$ , $V_{Ref} = 2.56\text{V}$ , ADC clock = 1MHz		-10.0	-5.0	+0.0	LSB
	$V_{CC} = 5\text{V}$ , $V_{Ref} = 2.56\text{V}$ , ADC clock = 2MHz		-10.0	-5.0	+0.0	
Offset error	$V_{CC} = 5\text{V}$ , $V_{Ref} = 2.56\text{V}$ , ADC clock = 1MHz		-2.0	+2.5	+6.0	LSB
	$V_{CC} = 5\text{V}$ , $V_{Ref} = 2.56\text{V}$ , ADC clock = 2MHz		-2.0	+2.5	+6.0	
Reference voltage		$V_{REF}$	2.56		AVCC	V

### 1.4 ADC Characteristics in Differential Mode

$T_A = -40^{\circ}\text{C}$  to  $+150^{\circ}\text{C}$ ,  $V_{CC} = 4.5\text{V}$  to  $5.5\text{V}$  (unless otherwise noted)

Parameters	Test Conditions	Symbol	Min	Typ	Max	Unit
Resolution	Differential conversion, gain = 5x, Temp = $-40^{\circ}\text{C}$ to $150^{\circ}\text{C}$			8		Bit
	Differential conversion, gain = 10x, Temp = $-40^{\circ}\text{C}$ to $150^{\circ}\text{C}$			8		
	Differential conversion, gain = 20x, Temp = $-40^{\circ}\text{C}$ to $150^{\circ}\text{C}$			8		
	Differential conversion, gain = 40x, Temp = $-40^{\circ}\text{C}$ to $150^{\circ}\text{C}$			8		

## 1.4 ADC Characteristics in Differential Mode (Continued)

$T_A = -40^\circ\text{C}$  to  $+150^\circ\text{C}$ ,  $V_{CC} = 4.5\text{V}$  to  $5.5\text{V}$  (unless otherwise noted)

Parameters	Test Conditions	Symbol	Min	Typ	Max	Unit
Absolute accuracy	Gain = 5x, 10x, $V_{CC} = 5\text{V}$ , $V_{Ref} = 2.56\text{V}$ , ADC clock = 2MHz	TUE		1.5	3.5	LSB
	Gain = 20x, $V_{CC} = 5\text{V}$ , $V_{Ref} = 2.56\text{V}$ , ADC clock = 2MHz			1.5	4.0	
	Gain = 40x, $V_{CC} = 5\text{V}$ , $V_{Ref} = 2.56\text{V}$ , ADC clock = 2MHz			1.5	6.0	
Integral non linearity	Gain = 5x, 10x, $V_{CC} = 5\text{V}$ , $V_{Ref} = 2.56\text{V}$ , ADC clock = 2MHz	INL		0.1	1.5	LSB
	Gain = 20x, $V_{CC} = 5\text{V}$ , $V_{Ref} = 2.56\text{V}$ , ADC clock = 2MHz			0.2	2.5	
	Gain = 40x, $V_{CC} = 5\text{V}$ , $V_{Ref} = 2.56\text{V}$ , ADC clock = 2MHz			0.7	4.5	
Differential non linearity	Gain = 5x, 10x, $V_{CC} = 5\text{V}$ , $V_{Ref} = 2.56\text{V}$ , ADC clock = 2MHz	DNL		0.1	1.5	LSB
	Gain = 20x, $V_{CC} = 5\text{V}$ , $V_{Ref} = 2.56\text{V}$ , ADC clock = 2MHz			0.2	2.0	
	Gain = 40x, $V_{CC} = 5\text{V}$ , $V_{Ref} = 2.56\text{V}$ , ADC clock = 2MHz			0.3	4.0	
Gain error	Gain = 5x, 10x, $V_{CC} = 5\text{V}$ , $V_{Ref} = 2.56\text{V}$ , ADC clock = 2MHz		-3.0		+3.0	LSB
	Gain = 20x, 40x, $V_{CC} = 5\text{V}$ , $V_{Ref} = 2.56\text{V}$ , ADC clock = 2MHz		-3.0		+3.0	
Offset error	Gain = 5x, 10x, $V_{CC} = 5\text{V}$ , $V_{Ref} = 2.56\text{V}$ , ADC clock = 2MHz		-3.0		+3.0	LSB
	Gain = 20x, 40x, $V_{CC} = 5\text{V}$ , $V_{Ref} = 2.56\text{V}$ , ADC clock = 2MHz		-4.0		+4.0	
Reference voltage		$V_{REF}$	2.56		$AVCC - 0.5$	V

## 1.5 Memory Endurance

EEPROM endurance: 50,000 Write/Erase cycles.

Flash endurance: 10,000 Write/Erase cycles.

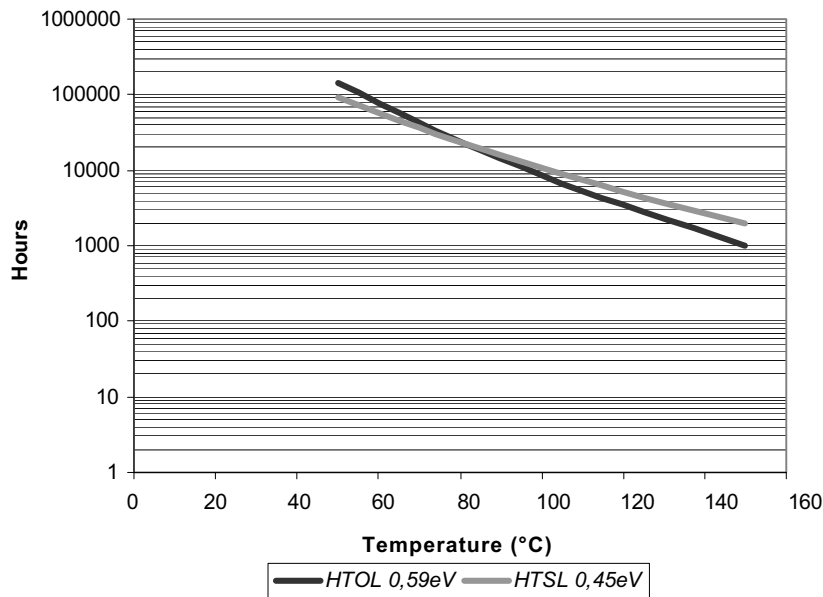
## 2. Grade 0 Qualification

The ATmega16M1/ATmega16M1/32M1/32C1/64M1/64C1/ATA8888/ATmega64M1/ATmega64C1 has been developed and manufactured according to the most stringent quality assurance requirements of ISO-TS-16949 and verified during product qualification as per AEC-Q100 grade 0.

AEC-Q100 qualification relies on temperature accelerated stress testing. High temperature field usage however may result in less significant stress test acceleration. In order to prevent the risk that ATmega16M1/ATmega16M1/32M1/32C1/64M1/64C1/ATA8888/ATmega64M1/ATmega64C1 lifetime would not satisfy the application end-of-life reliability requirements, Atmel® has extended the testing, whenever applicable (high temperature operating life test, high temperature storage life, data retention, thermal cycles), far beyond the AEC-Q100 requirements. Thereby, Atmel verified the ATmega16M1/ATmega16M1/32M1/32C1/64M1/64C1/ATA8888/ATmega64M1/ATmega64C1 has a long safe lifetime period after the grade 0 qualification acceptance limits.

The valid domain calculation depends on the activation energy of the potential failure mechanism that is considered. Therefore any temperature mission profile which could exceed the AEC-Q100 equivalence domain shall be submitted to Atmel for a thorough reliability analysis

**Figure 2-1. AEC-Q100 Lifetime Equivalence**



### 3. Ordering Information

**Table 3-1. ATmega16/32/64/M1/C1 Ordering Code**

Speed is 16MHz and Power Supply is 4.5V to 5.5V for all devices. Operating range is the same for all devices too Extended (–40°C to +150°C).

Speed (MHz)	Power Supply	Ordering Code	Package <sup>(1)</sup>	Operation Range
16 <sup>(2)</sup>	4.5V to 5.5V	ATmega16M1-15MD	PV	Extended (–40°C to +150°C)
16 <sup>(2)</sup>	4.5V to 5.5V	ATmega16M1-15AD	MA	Extended (–40°C to +150°C)
16 <sup>(2)</sup>	4.5V to 5.5V	ATmega16M1/32M1/32C1/64M1/64C1-ESMD	PV	Engineering samples
16 <sup>(2)</sup>	4.5V to 5.5V	ATmega16M1/32M1/32C1/64M1/64C1-ESAD	MA	Engineering samples
16 <sup>(2)</sup>	4.5V to 5.5V	ATmega16M1/32M1/32C1/64M1/64C1-15MD	PV	Extended (–40°C to +150°C)
16 <sup>(2)</sup>	4.5V to 5.5V	ATmega16M1/32M1/32C1/64M1/64C1-15AD	MA	Extended (–40°C to +150°C)
16 <sup>(2)</sup>	4.5V to 5.5V	ATA8888-15MD	PV	Extended (–40°C to +150°C)
16 <sup>(2)</sup>	4.5V to 5.5V	ATA8888-15AD	MA	Extended (–40°C to +150°C)
16 <sup>(2)</sup>	4.5V to 5.5V	ATmega64M1-ESMD	PV	Engineering samples
16 <sup>(2)</sup>	4.5V to 5.5V	ATmega64M1-ESAD	MA	Engineering samples
16 <sup>(2)</sup>	4.5V to 5.5V	ATmega64C1-ESMD	PV	Engineering samples
16 <sup>(2)</sup>	4.5V to 5.5V	ATmega64C1-ESAD	MA	Engineering samples
16 <sup>(2)</sup>	4.5V to 5.5V	ATmega64M1-15MD	PV	Extended (–40°C to +150°C)
16 <sup>(2)</sup>	4.5V to 5.5V	ATmega64M1-15AD	MA	Extended (–40°C to +150°C)
16 <sup>(2)</sup>	4.5V to 5.5V	ATmega64C1-15MD	PV	Extended (–40°C to +150°C)
16 <sup>(2)</sup>	4.5V to 5.5V	ATmega64C1-15AD	MA	Extended (–40°C to +150°C)

- Notes:
1. Pb-free packaging, complies to the European Directive for Restriction of Hazardous Substances (RoHS directive). Also halide free and fully green.
  2. For speed versus  $V_{CC}$ , see complete datasheet.

## 4. Package Information

Table 4-1. Package Types

Package Type	
<b>PV</b>	32-lead, 7.0mm × 7.0mm body, 0.65mm pitch, quad flat no lead package (QFN)
<b>MA</b>	MA, 32 - lead, 7mm × 7mm body size, 1.0mm body thickness 0.8mm lead pitch, thin profile plastic quad flat package (TQFP)



Figure 4-1. PV

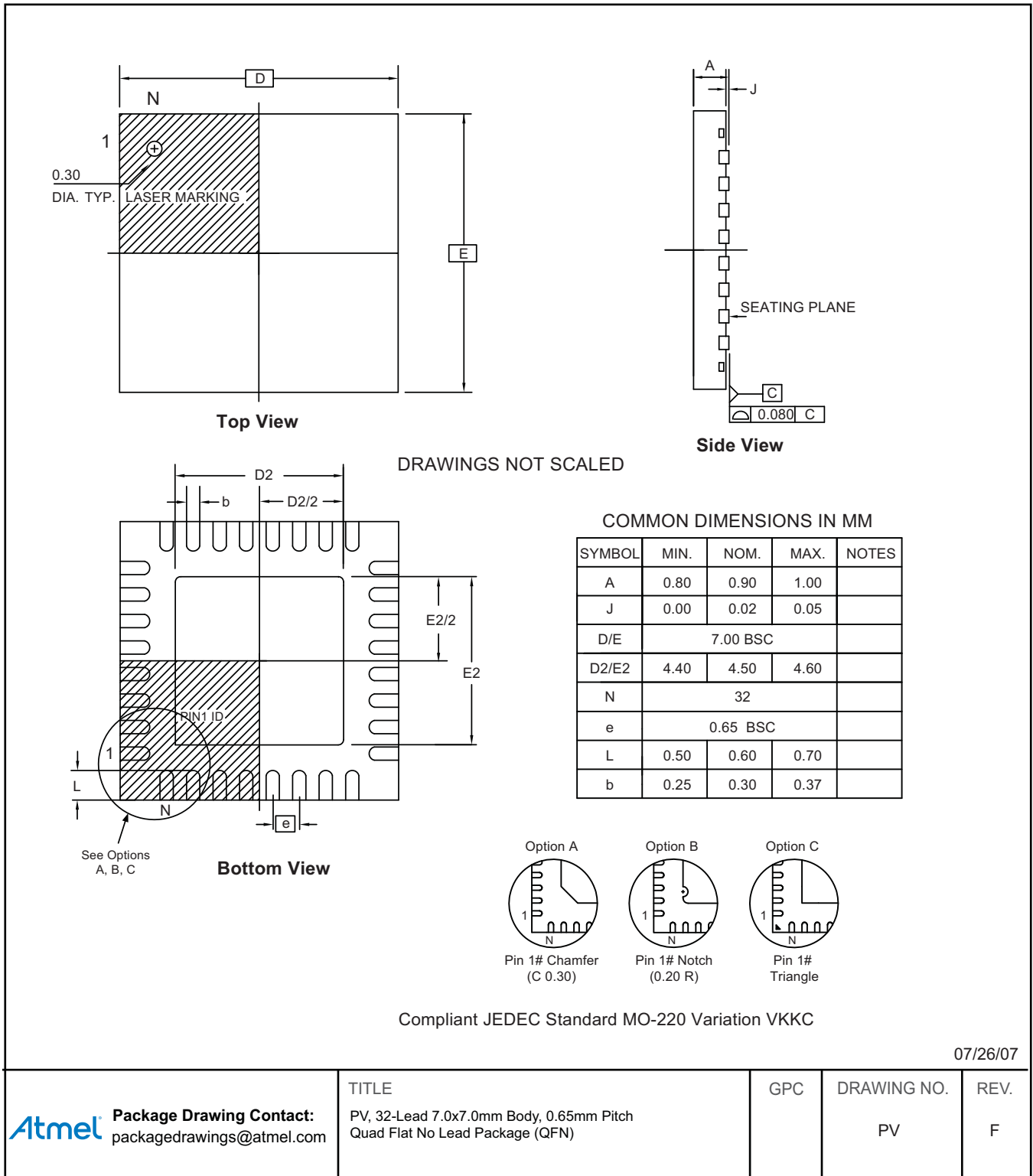
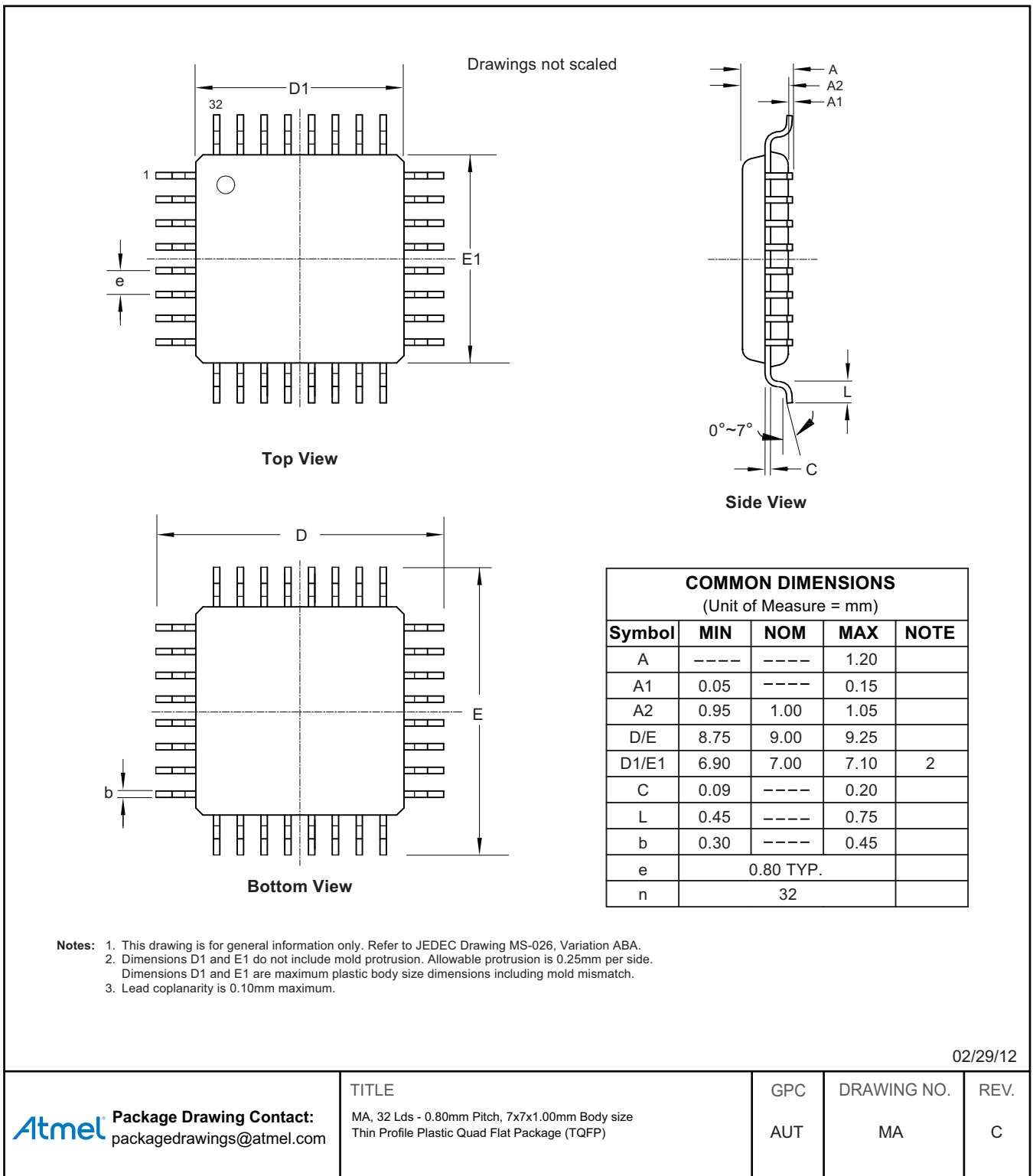


Figure 4-2. MA



## 5. Revision History

Please note that the following page numbers referred to in this section refer to the specific revision mentioned, not to this document.

Revision No.	History
7781F-AVR-07/14	<ul style="list-style-type: none"><li>• Put datasheet in the latest template</li></ul>
7781E-AVR-03/12	<ul style="list-style-type: none"><li>• Package MA updated</li></ul>
7781D-AVR-01/10	<ul style="list-style-type: none"><li>• Section 1.2 “DC Characteristics” on page 3 changed</li></ul>
7781C-AVR-04/09	<ul style="list-style-type: none"><li>• DC characteristics updated</li><li>• ADC characteristics updated</li><li>• Memory endurance added</li><li>• Ordering code added</li></ul>
7781B-AVR-05/08	<ul style="list-style-type: none"><li>• Added AEC-Q100 lifetime equivalence graph, page 4</li></ul>
7781A-AVR-03/08	<ul style="list-style-type: none"><li>• Document creation</li></ul>



**Atmel Corporation** 1600 Technology Drive, San Jose, CA 95110 USA T: (+1)(408) 441.0311 F: (+1)(408) 436.4200 | [www.atmel.com](http://www.atmel.com)

© 2014 Atmel Corporation. / Rev.: 7781F-AVR-07/14

Atmel®, Atmel logo and combinations thereof, Enabling Unlimited Possibilities®, AVR®, and others are registered trademarks or trademarks of Atmel Corporation in U.S. and other countries. Other terms and product names may be trademarks of others.

DISCLAIMER: The information in this document is provided in connection with Atmel products. No license, express or implied, by estoppel or otherwise, to any intellectual property right is granted by this document or in connection with the sale of Atmel products. EXCEPT AS SET FORTH IN THE ATMEL TERMS AND CONDITIONS OF SALES LOCATED ON THE ATMEL WEBSITE, ATMEL ASSUMES NO LIABILITY WHATSOEVER AND DISCLAIMS ANY EXPRESS, IMPLIED OR STATUTORY WARRANTY RELATING TO ITS PRODUCTS INCLUDING, BUT NOT LIMITED TO, THE IMPLIED WARRANTY OF MERCHANTABILITY, FITNESS FOR A PARTICULAR PURPOSE, OR NON-INFRINGEMENT. IN NO EVENT SHALL ATMEL BE LIABLE FOR ANY DIRECT, INDIRECT, CONSEQUENTIAL, PUNITIVE, SPECIAL OR INCIDENTAL DAMAGES (INCLUDING, WITHOUT LIMITATION, DAMAGES FOR LOSS AND PROFITS, BUSINESS INTERRUPTION, OR LOSS OF INFORMATION) ARISING OUT OF THE USE OR INABILITY TO USE THIS DOCUMENT, EVEN IF ATMEL HAS BEEN ADVISED OF THE POSSIBILITY OF SUCH DAMAGES. Atmel makes no representations or warranties with respect to the accuracy or completeness of the contents of this document and reserves the right to make changes to specifications and products descriptions at any time without notice. Atmel does not make any commitment to update the information contained herein. Unless specifically provided otherwise, Atmel products are not suitable for, and shall not be used in, automotive applications. Atmel products are not intended, authorized, or warranted for use as components in applications intended to support or sustain life.

SAFETY-CRITICAL, MILITARY, AND AUTOMOTIVE APPLICATIONS DISCLAIMER: Atmel products are not designed for and will not be used in connection with any applications where the failure of such products would reasonably be expected to result in significant personal injury or death ("Safety-Critical Applications") without an Atmel officer's specific written consent. Safety-Critical Applications include, without limitation, life support devices and systems, equipment or systems for the operation of nuclear facilities and weapons systems. Atmel products are not designed nor intended for use in military or aerospace applications or environments unless specifically designated by Atmel as military-grade. Atmel products are not designed nor intended for use in automotive applications unless specifically designated by Atmel as automotive-grade.

# Mouser Electronics

Authorized Distributor

Click to View Pricing, Inventory, Delivery & Lifecycle Information:

[Microchip:](#)

[ATMEGA32C1-15AD](#) [ATMEGA32C1-15MD](#) [ATMEGA64C1-15AD](#) [ATMEGA64C1-15MD](#)

Компания «Life Electronics» занимается поставками электронных компонентов импортного и отечественного производства от производителей и со складов крупных дистрибьюторов Европы, Америки и Азии.

С конца 2013 года компания активно расширяет линейку поставок компонентов по направлению коаксиальный кабель, кварцевые генераторы и конденсаторы (керамические, пленочные, электролитические), за счёт заключения дистрибьюторских договоров

Мы предлагаем:

- Конкурентоспособные цены и скидки постоянным клиентам.
- Специальные условия для постоянных клиентов.
- Подбор аналогов.
- Поставку компонентов в любых объемах, удовлетворяющих вашим потребностям.
- Приемлемые сроки поставки, возможна ускоренная поставка.
- Доставку товара в любую точку России и стран СНГ.
- Комплексную поставку.
- Работу по проектам и поставку образцов.
- Формирование склада под заказчика.
- Сертификаты соответствия на поставляемую продукцию (по желанию клиента).
- Тестирование поставляемой продукции.
- Поставку компонентов, требующих военную и космическую приемку.
- Входной контроль качества.
- Наличие сертификата ISO.

В составе нашей компании организован Конструкторский отдел, призванный помогать разработчикам, и инженерам.

Конструкторский отдел помогает осуществить:

- Регистрацию проекта у производителя компонентов.
- Техническую поддержку проекта.
- Защиту от снятия компонента с производства.
- Оценку стоимости проекта по компонентам.
- Изготовление тестовой платы монтаж и пусконаладочные работы.



Тел: +7 (812) 336 43 04 (многоканальный)

Email: [org@lifeelectronics.ru](mailto:org@lifeelectronics.ru)