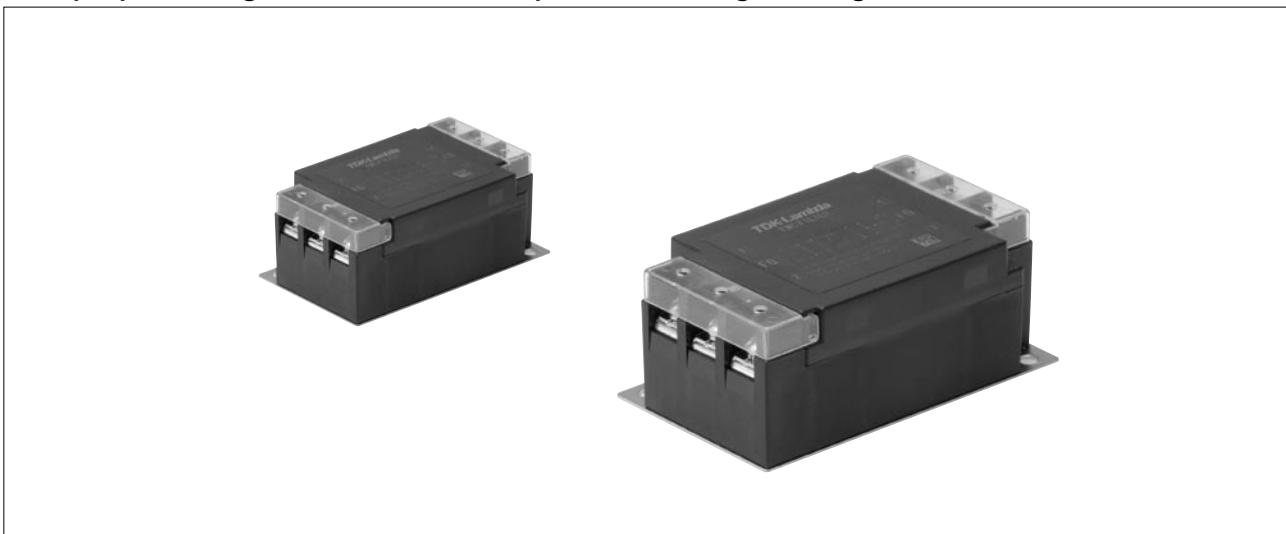


RSAN SERIES

Multipurpose Single-Phase Filter Compatible with High-Voltage Pulse



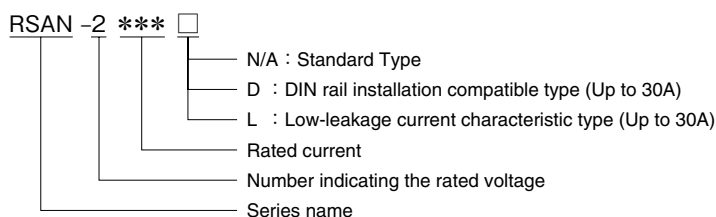
FEATURES

- Amorphous core is used as the common mode coil core for the RSEN series, which helps prevent device error.
- Self-tightening screws and an open/close type cover make wiring work easier.
- Optional low-leakage current characteristic type and DIN rail installation compatible type are also available.
- Compliant with RoHS directives.

SAFETY STANDARDS

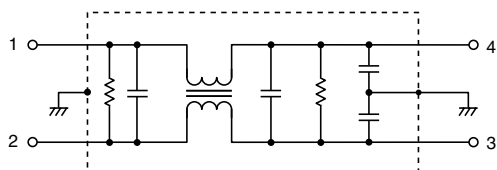
| | |
|----------------|-----------------------------|
| UL1283 | File No. E62388 |
| CSA C22.2 No.8 | File No. 208777 |
| EN60939 | Licence Ref. No. SE/07115-2 |

PRODUCT IDENTIFICATION

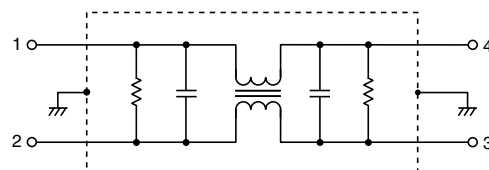


CIRCUIT DIAGRAMS

RSAN-2 ***
RSAN-2 *** D



RSAN-2 *** L



• Conformity to RoHS Directive: This means that, in conformity with EU Directive 2002/95/EC, lead, cadmium, mercury, hexavalent chromium, and specific bromine-based flame retardants, PBB and PBDE, have not been used, except for exempted applications.

• All specifications are subject to change without notice.

ELECTRICAL CHARACTERISTICS

| Part No. | Rated voltage (AC/DC) | Rated current (AC/DC) | Withstand voltage | Insulation resistance | Leakage current | Operating temperature range | With derating over | DC resistance (mΩ) | Attenuation frequency range (MHz) | | |
|-----------|-----------------------|-----------------------|---|--------------------------------------|------------------------------|-----------------------------|--------------------|--------------------|-----------------------------------|-----------|-------------------|
| | | | | | | | | | Common mode | | Differential mode |
| | | | | | | | | | at 25dB | | at 25dB |
| RSAN-2003 | 250V | 3A | AC.2500V 60s [Between line to ground] | 100MΩ min. [DC.500V/ 1min.] | 1.0mA max. [250V/60Hz] | -25 to +85°C | 55°C | 250 max. | 0.1 to 10 | 0.1 to 30 | |
| RSAN-2006 | | 6A | | | | | | 110 max. | 0.1 to 10 | 0.1 to 30 | |
| RSAN-2010 | | 10A | | | | | | 40 max. | 0.3 to 10 | 0.2 to 30 | |
| RSAN-2016 | | 16A | | | | | | 20 max. | 0.8 to 10 | 0.3 to 30 | |
| RSAN-2020 | | 20A | | | | | | 10 max. | 1 to 10 | 0.3 to 30 | |
| RSAN-2030 | | 30A | | | | | | 6 max. | 2 to 10 | 0.4 to 30 | |
| RSAN-2040 | | 40A | | | | | | 6 max. | 0.8 to 10 | 0.1 to 30 | |
| RSAN-2050 | | 50A | | | | | | 4 max. | 1 to 10 | 0.1 to 30 | |
| RSAN-2060 | | 60A | | | | | | 3 max. | 2 to 10 | 0.2 to 30 | |

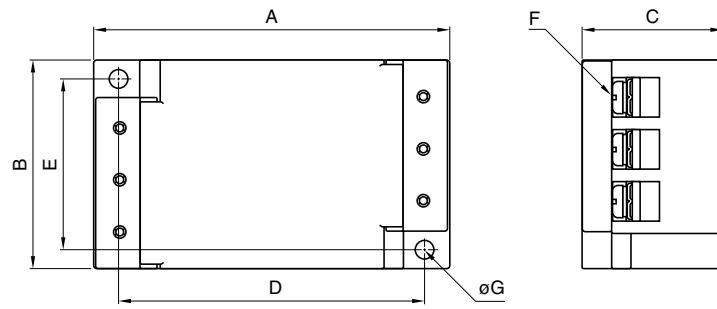
| Part No. | Rated voltage (AC/DC) | Rated current (AC/DC) | Withstand voltage | Insulation resistance | Leakage current | Operating temperature range | With derating over | DC resistance (mΩ) | Attenuation frequency range (MHz) | | |
|------------|-----------------------|-----------------------|---|--------------------------------------|-------------------------------|-----------------------------|--------------------|--------------------|-----------------------------------|-----------|-------------------|
| | | | | | | | | | Common mode | | Differential mode |
| | | | | | | | | | at 20dB | at 10dB | at 25dB |
| RSAN-2003L | 250V | 3A | AC.2500V 60s [Between line to ground] | 100MΩ min. [DC.500V/ 1min.] | 10 μ A max. [250V/60Hz] | -25 to +85°C | 55°C | 250 max. | 0.1 to 3 | - | 0.1 to 30 |
| RSAN-2006L | | 6A | | | | | | 110 max. | 0.1 to 3 | - | 0.1 to 30 |
| RSAN-2010L | | 10A | | | | | | 40 max. | 0.5 to 6 | - | 0.2 to 30 |
| RSAN-2016L | | 16A | | | | | | 20 max. | - | 0.3 to 10 | 0.3 to 30 |
| RSAN-2020L | | 20A | | | | | | 10 max. | - | 0.5 to 8 | 0.3 to 30 |
| RSAN-2030L | | 30A | | | | | | 6 max. | - | 3 to 20 | 0.4 to 30 |

DERATINGS

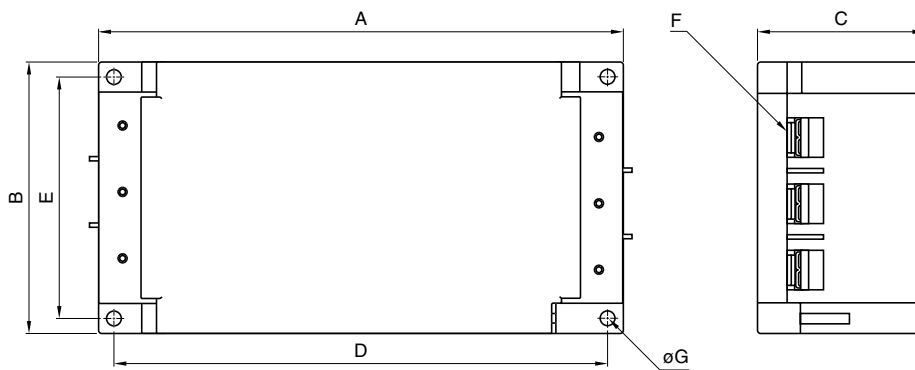


■ SHAPES AND DIMENSIONS

RSAN-2003/2006/2010/2016/2020/2030



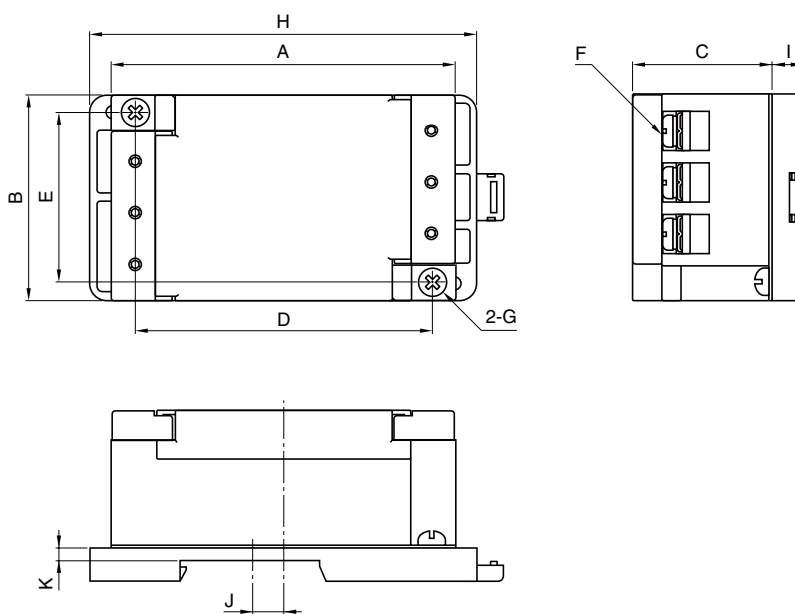
RSAN-2040/2050/2060



Dimensions in mm

| Part No. | A | B | C | D | E | F | ϕG | Recommended clamping torque |
|-----------|-----|----|----|-----|----|----|----------|-----------------------------|
| RSAN-2003 | 87 | 52 | 35 | 75 | 43 | M4 | 4.5 | 1.27N · m |
| RSAN-2006 | | | | | | | | |
| RSAN-2010 | | | | | | | | |
| RSAN-2016 | | | | | | | | |
| RSAN-2020 | | | | | | | | |
| RSAN-2030 | 170 | 90 | 54 | 160 | 80 | M5 | 4.5 | 2.5N · m |
| RSAN-2040 | | | | | | | | |
| RSAN-2060 | | | | | | | | |

RSAN-2003D/2006D/2010D/2016D/2020D/2030D

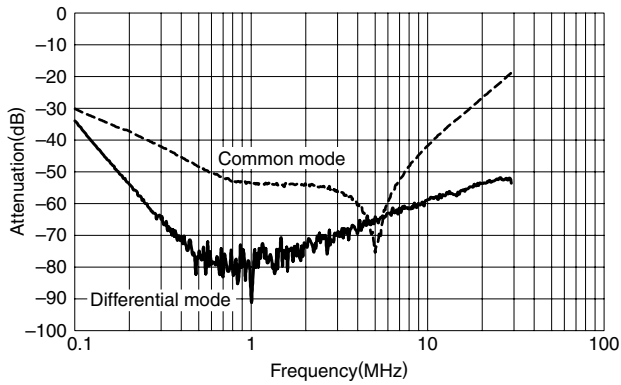


Dimensions in mm

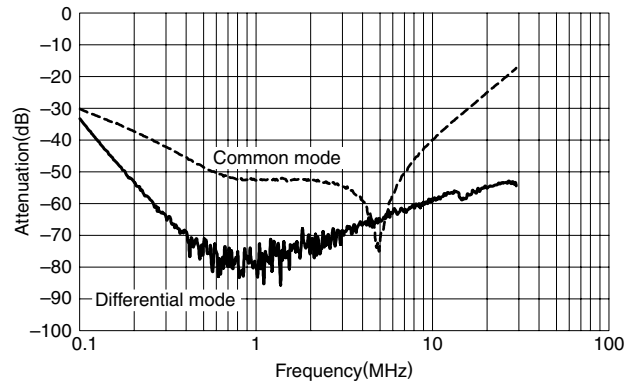
| Part No. | A | B | C | D | E | F | G | H | I | J | K |
|------------|----|----|----|----|----|----|----|----|-----|-----|-----|
| RSAN-2003D | 87 | 52 | 35 | 75 | 43 | M4 | M4 | 98 | 8.4 | 8.5 | 3.5 |
| RSAN-2006D | | | | | | | | | | | |
| RSAN-2010D | | | | | | | | | | | |
| RSAN-2016D | | | | | | | | | | | |
| RSAN-2020D | | | | | | | | | | | |
| RSAN-2030D | | | | | | | | | | | |

ATTENUATION vs. FREQUENCY CHARACTERISTICS

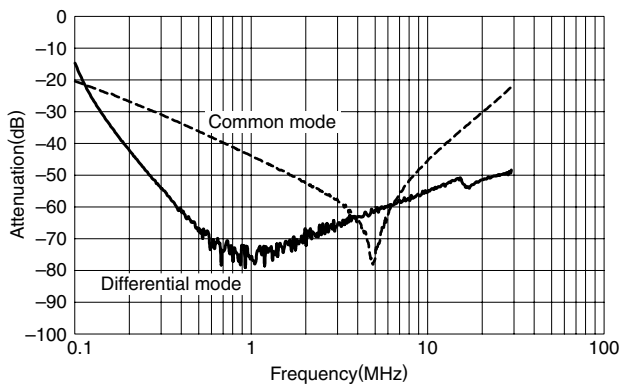
RSAN-2003



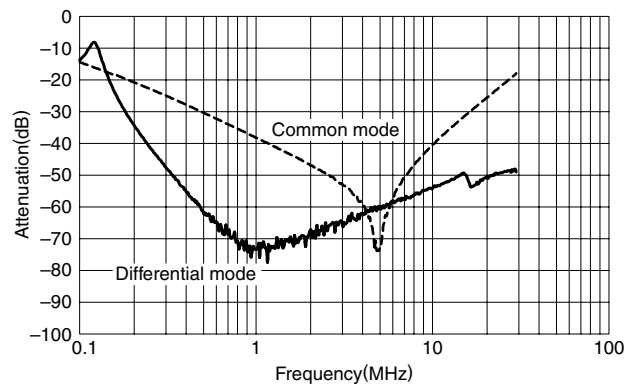
RSAN-2006



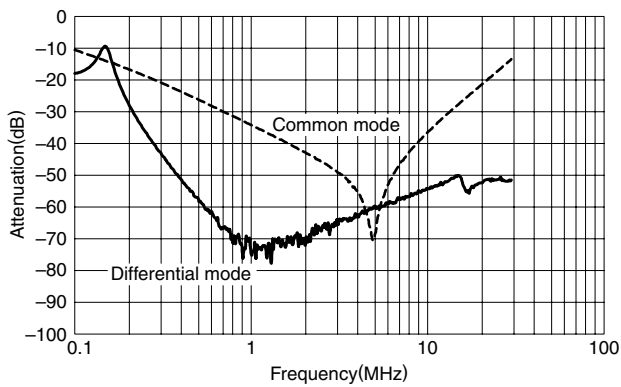
RSAN-2010



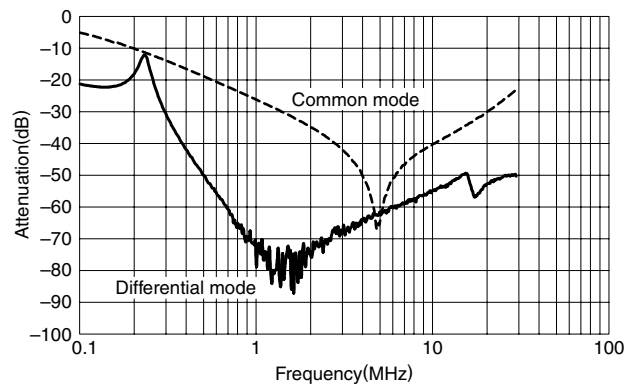
RSAN-2016



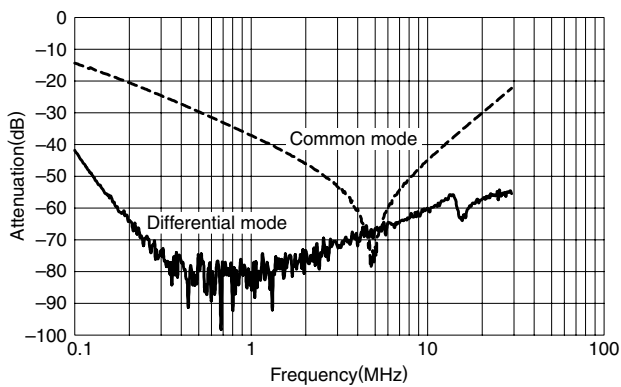
RSAN-2020



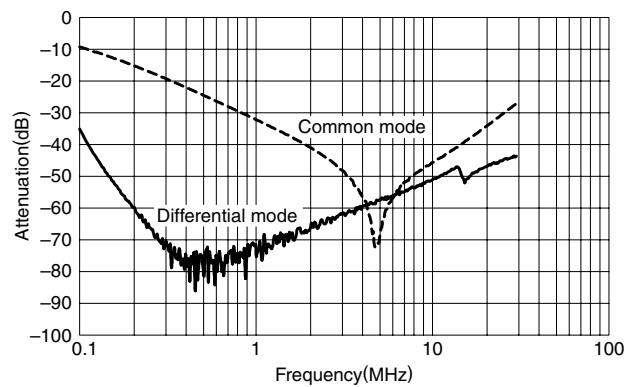
RSAN-2030



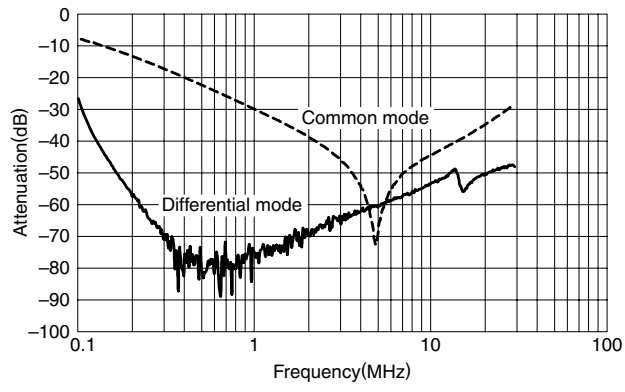
RSAN-2040



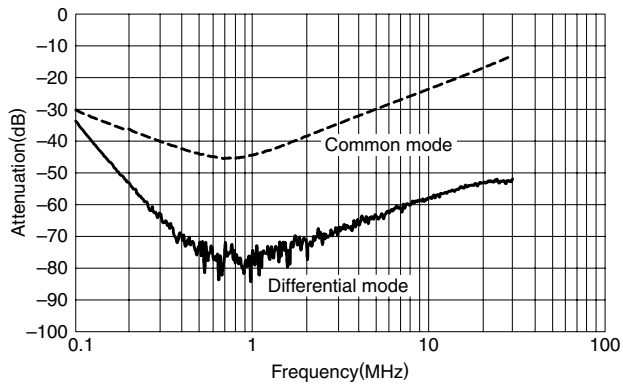
RSAN-2050



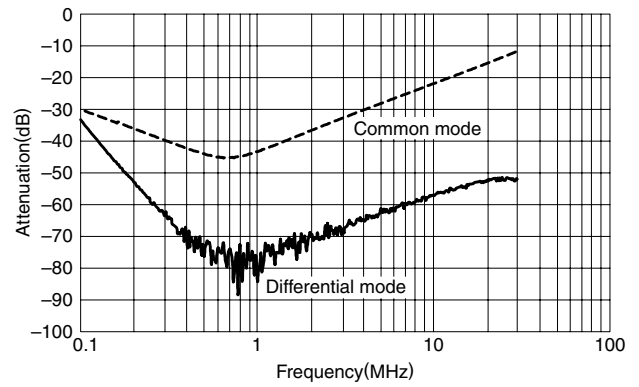
RSAN-2060



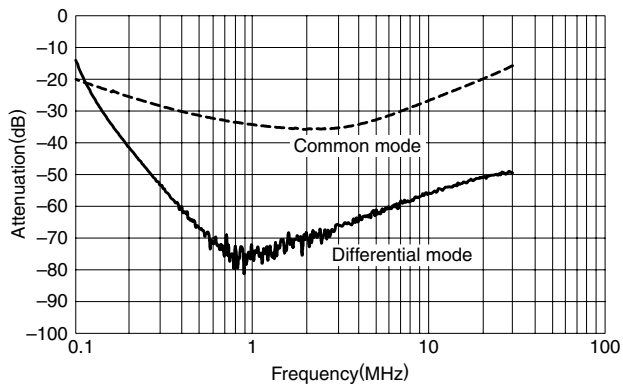
RSAN-2003L



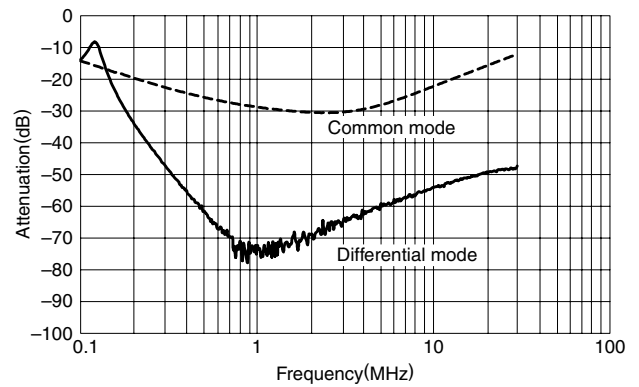
RSAN-2006L



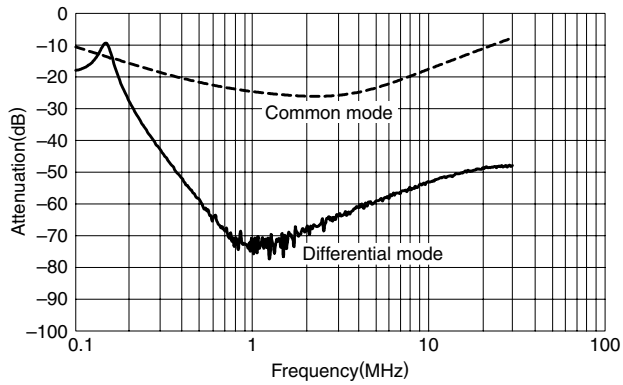
RSAN-2010L



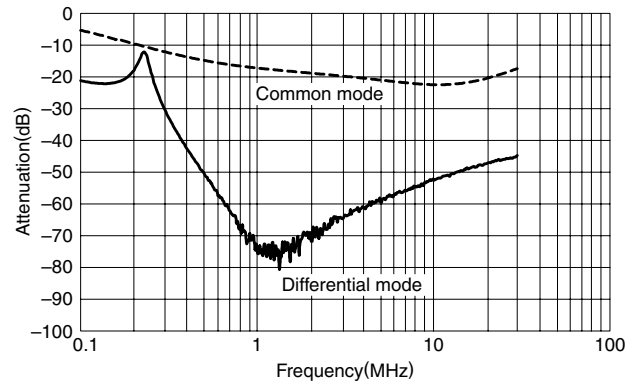
RSAN-2016L



RSAN-2020L



RSAN-2030L



Компания «Life Electronics» занимается поставками электронных компонентов импортного и отечественного производства от производителей и со складов крупных дистрибьюторов Европы, Америки и Азии.

С конца 2013 года компания активно расширяет линейку поставок компонентов по направлению коаксиальный кабель, кварцевые генераторы и конденсаторы (керамические, пленочные, электролитические), за счёт заключения дистрибьюторских договоров

Мы предлагаем:

- Конкурентоспособные цены и скидки постоянным клиентам.
- Специальные условия для постоянных клиентов.
- Подбор аналогов.
- Поставку компонентов в любых объемах, удовлетворяющих вашим потребностям.
- Приемлемые сроки поставки, возможна ускоренная поставка.
- Доставку товара в любую точку России и стран СНГ.
- Комплексную поставку.
- Работу по проектам и поставку образцов.
- Формирование склада под заказчика.
- Сертификаты соответствия на поставляемую продукцию (по желанию клиента).
- Тестирование поставляемой продукции.
- Поставку компонентов, требующих военную и космическую приемку.
- Входной контроль качества.
- Наличие сертификата ISO.

В составе нашей компании организован Конструкторский отдел, призванный помогать разработчикам, и инженерам.

Конструкторский отдел помогает осуществить:

- Регистрацию проекта у производителя компонентов.
- Техническую поддержку проекта.
- Защиту от снятия компонента с производства.
- Оценку стоимости проекта по компонентам.
- Изготовление тестовой платы монтаж и пусконаладочные работы.



Тел: +7 (812) 336 43 04 (многоканальный)

Email: org@lifeelectronics.ru