

Digital Phosphor Oscilloscopes

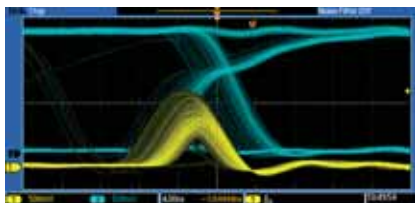
MSO2000 Series • DPO2000 Series



Tektronix MSO2000 and DPO2000 Series Digital Phosphor Oscilloscopes Feature-Rich Tools for Debugging Mixed Signal Designs.

The Power to Solve Problems Quickly -

The MSO2000 and DPO2000 Series digital phosphor oscilloscopes (DPOs) deliver the performance and tools you need to visualize your signals and find answers quickly. The DPO2000 Series are the first oscilloscopes to provide 1 M points of usable record length on all channels, serial trigger and decode analysis options, a variable low-pass filter that also allows you to see signal details to the oscilloscope's full bandwidth and all in a compact form factor. The MSO2000 Series adds 16 integrated digital channels, enabling you to visualize and time correlate analog and digital signals on a single instrument. This integration extends triggering functionality across all 20 channels - which is ideal for debugging mixed analog and digital designs.



Digital phosphor technology enables 5,000 waveforms/second waveform capture and real-time intensity grading on the MSO2000 and DPO2000 Series.

Designed to Make Your Work Easier

Wave Inspector® Navigation and Search

Imagine trying to efficiently use the Internet if search engines such as Google and Yahoo didn't exist and Web browser features such as Favorites and Links didn't exist. Now you know how most modern oscilloscope users feel when trying to use the long record length in their digital oscilloscope. Record length, one of the key specifications of an oscilloscope, is the number of samples it can digitize and store in a single acquisition. The longer the record length, the longer the time window you can capture with high timing resolution (high sample rate).

The first digital oscilloscopes could capture and store only 500 points, which made it very difficult to acquire all relevant information around the event being investigated. Over the years, oscilloscope vendors have provided longer and longer record lengths to meet market demands for long capture windows with high resolution. These mega-point record lengths often represent thousands of screens worth of signal activity. While standard record lengths have increased greatly over

Features & Benefits

Key Performance Specifications

- 100 MHz and 200 MHz bandwidth models
- 2 or 4 analog channels
- 16 digital channels (MSO2000 Series)
- Sample rates up to 1 GS/s on all channels
- 1 Mega sample record length on all channels
- 5,000 wfms/s maximum waveform capture rate
- Suite of advanced triggers

Serial Bus Trigger and Decode

- I²C, SPI, CAN, LIN, and RS-232/422/485/UART serial triggering, decode, and analysis options

Ease of Use Features

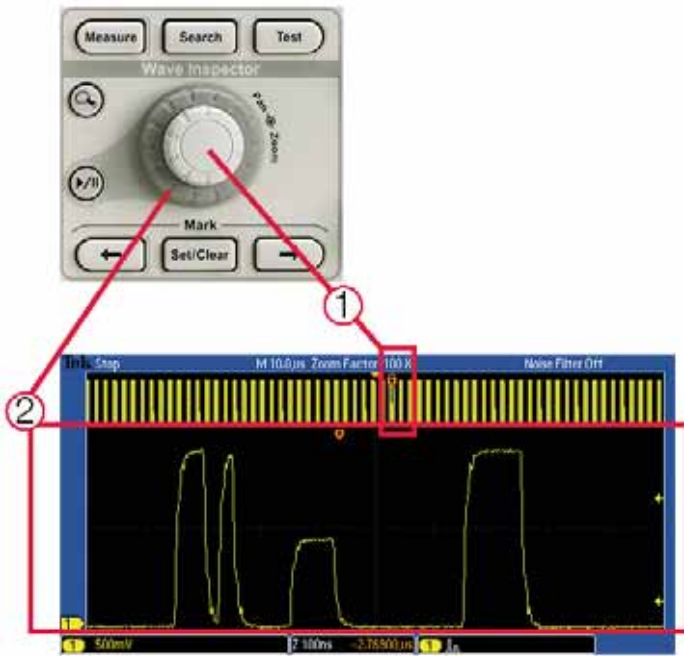
- Wave Inspector® Navigation and Search provides unprecedented efficiency in waveform analysis
- FilterVu™ variable low-pass filter allows for removal of unwanted signal noise while still capturing high-frequency events
- 7 in (180 mm) bright, widescreen, TFT-LCD color display
- USB 2.0 on front panel for quick and easy data storage
- USB 2.0 device port on rear panel for direct PC control of oscilloscope using USBTMC or direct printing to any PictBridge® compatible printer
- Plug 'n' Play PC connectivity and analysis software solutions
- TekVPI® Probe Interface supports active, differential, and current probes for automatic scaling and units
- Small footprint and light weight - only 5.3 in (134 mm) deep and 7 lb 14 oz (3.6 kg)

Mixed Signal Design and Analysis (MSO2000 Series)

- Ability to time correlate up to 4 analog and 16 digital channels
- Parallel bus trigger and analysis
- Multichannel setup and hold triggering
- Next-generation digital waveform display

Applications

- Embedded design and debug
- Mixed signal design and debug
- Power measurements
- Automotive electronics
- Education and training
- Video design and debug



Wave Inspector controls provide unprecedented efficiency in viewing, navigating, and analyzing waveform data. Zip through your 1 M point record by turning the outer pan control (2). Get from the beginning to end in seconds. See something of interest and want to see more details? Just turn the inner zoom control (1).

the years and can now satisfy the vast majority of applications in the market-place, tools for effectively and efficiently viewing, navigating, and analyzing long record length acquisitions have been sorely neglected until now.

The Tektronix MSO/DPO2000 Series redefines expectations for working with long record lengths with the following innovative Wave Inspector controls:

Zoom/Pan - A dedicated, two-tier front-panel control provides intuitive control of both zooming and panning. The inner control adjusts the zoom factor (or zoom scale); turning it clockwise activates zoom and goes to progressively higher zoom factors, while turning it counterclockwise results in lower zoom factors and eventually turning zoom off. The outer control pans the zoom box across the waveform to quickly get to the portion of the waveform you are interested in.

The outer control also utilizes force-feedback to determine how fast to pan on the waveform. The farther you turn the outer control, the faster the zoom box moves. Pan direction is changed by simply turning the control the other way. No longer do you need to navigate through multiple menus to adjust your zoom view.

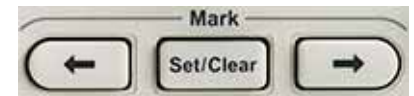
Play/Pause - A dedicated play/pause button on the front panel scrolls the waveform across the display automatically while you look for anomalies or an event of interest. Playback speed and direction are controlled using the intuitive pan control. Once again, turning the control further makes the waveform scroll faster and changing direction is as simple as turning the control the other way.



Search step 1: You define what you would like to find.



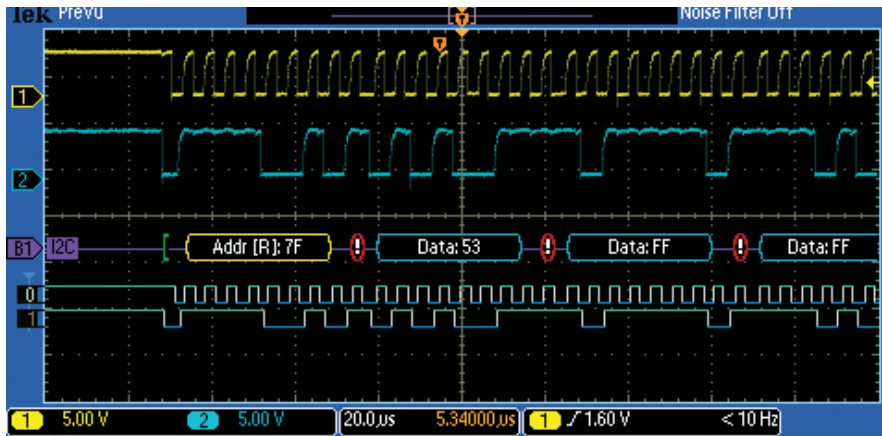
Search step 2: MSO/DPO2000 automatically searches through the record and marks each event with a hollow white triangle.



Search step 3: Use previous and next buttons to jump from one event to the next.

User Marks - See something interesting on your waveform? Press the **Set Mark** button on the front panel to leave one or more “bookmarks” on the waveform. Navigating between marks is as simple as pressing the **Previous** (←) and **Next** (→) buttons on the front panel.

Search Marks - Don't want to take the time to inspect the entire acquisition manually to find the event you're looking for? The MSO/DPO2000 Series features a robust automatic waveform search feature that allows you to search through your long acquisition based on user-defined criteria. All occurrences of the event are highlighted with search marks and are easily navigated to, using the front-panel **Previous** (←) and **Next** (→) buttons. Search types include edge, pulse width, runt, logic, setup and hold, rise/fall time and parallel, I²C, SPI, RS-232/422/485/ UART, CAN, and LIN packet content.



MSO/DPO2000 triggered on a specific data packet going across an I²C bus. No more counting clock edges and 1s and 0s. A Bus waveform provides decoded packet content including Start, Address, Read/Write, Data, and Stop. And the addition of timing waveforms makes it easy to quickly determine values of two signals.

See the MSO/DPO2000 Series in action for yourself.

Try out the MSO/DPO2000 Virtual Oscilloscope at:
www.tektronix.com/mso2000

Serial Triggering and Analysis

One of the most common applications requiring long record length is serial data analysis in embedded system design. Embedded systems are virtually everywhere. They can contain many different types of devices including microprocessors, microcontrollers, DSPs, RAM, EEPROMs, FPGAs, ADCs, DACs, and I/O. These various devices have traditionally communicated with each other and the outside world using wide parallel buses. Today, however, more and more embedded systems are replacing these wide parallel buses with serial buses due to lower board space requirements, fewer pins, lower power, embedded clocks, differential signaling for better noise immunity and most importantly, lower cost. In addition, there's a large supply of off-the-shelf building block components from reputable manufacturers, enabling rapid design development.

While serial buses have a large number of benefits, they also present significant challenges that their predecessors (parallel buses) did not face. They make debugging bus and system problems more

difficult, it's harder to isolate events of interest and it's more difficult to interpret what is displayed on the oscilloscope screen. The MSO2000 and DPO2000 Series address these challenges and represent the ultimate tool for engineers working with serial buses such as I²C, SPI, RS-232/422/485/UART, CAN, and LIN.

Bus Display - Provides a higher level, combined view of the individual signals (clock, data, chip enable, etc.) that make up your bus, making it easy to identify where packets begin and end and identifying sub-packet components such as address, data, identifier, CRC, etc.

Serial Triggering - Trigger on packet content such as start of packet, specific addresses, specific data content, unique identifiers, etc., on popular serial interfaces - I²C, SPI, RS-232/422/485/UART, CAN, and LIN.

Bus Decoding - Tired of having to visually inspect the waveform to count clocks and determine if each bit is a 1 or a 0, and then combine bits into bytes and determine the hex value? Let the oscilloscope do it for you! Once you've set up a bus, the oscilloscope will decode each packet on the bus and display the value in either hex, binary, decimal (LIN only), or ASCII (RS-232/422/485/UART only) in the bus waveform.



The P6316 digital probe for MSO2000 Series simplifies connection to the device-under-test

Event Table - In addition to seeing decoded packet data on the bus waveform itself, you can view all captured packets in a tabular view much like you would see on a logic analyzer. Packets are time-stamped and listed consecutively with columns for each component (Address, Data, etc.). The event table can also be exported for use offline.

Search - Serial triggering is very useful for isolating an event of interest, but once you've captured it and need to analyze the surrounding data, what do you do? In the past, you had to manually scroll through the waveform, counting and converting bits and looking for what caused the event. With the MSO2000 and DPO2000 Series, you can have the oscilloscope automatically search through the acquired data for user-defined criteria including serial packet content. Each occurrence is marked for easy reference. Rapid navigation between marks is as simple as pressing the **Previous** (←) and **Next** (→) buttons on the front panel.

Mixed Signal Design and Analysis (MSO2000 Series)

As an embedded-design engineer, you are faced with the challenge of ever-increasing system complexity. A typical embedded design may incorporate various analog signals, high- and low-speed serial digital communication and microprocessor buses, just to name a few. Serial protocols such as I²C and SPI are used frequently for chip-to-chip communication, but parallel buses are still used in many applications.

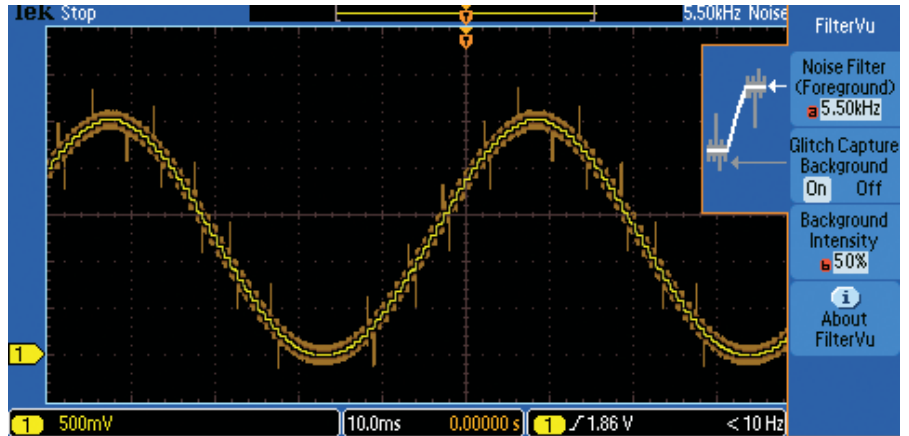
Microprocessors, FPGAs, Analog-to-Digital Converters (ADCs), and Digital-to-Analog Converters (DACs) are all examples of ICs that present unique measurement challenges in today's embedded designs. The MSO2000 Series Mixed Signal Oscilloscopes offer the addition of 16 digital channels. These channels are tightly integrated into the oscilloscope's user interface, simplifying operation and making it possible to solve mixed signal issues easily.



Next Generation Digital Waveform Display

In a continued effort to make mixed signal oscilloscopes easy to use, the MSO2000 Series has redefined the way you view digital waveforms. One common problem shared by both logic analyzers and mixed signal oscilloscopes is determining if data is a one or a zero when zoomed in far enough that the digital trace stays flat all the way across the display. The MSO2000 has color-coded the digital traces, displaying ones in green and zeros in blue. In addition, the MSO2000 displays white edges around the transition points of digital channels when there is uncertainty between sample points. This acts as a visual reminder that increasing the sample rate on the next acquisition will reveal higher frequency information than your previous settings could acquire.

Channel setup on an MSO can often be time consuming as compared to the traditional oscilloscope. This process often includes probing the device under test, labeling the channels, and positioning the channels on screen. The MSO2000 simplifies this process by allowing the user to group digital waveforms and enter waveform labels using a USB keyboard. By simply placing digital



Output of DAC Signal) Notice how FilterVu™ clearly shows the noise-free steps of the DAC in the foreground trace (yellow) which has removed all frequencies above 5.5 kHz. FilterVu also captures and displays high-frequency glitches up to the full bandwidth of the oscilloscope in the background trace (orange).

waveforms next to each other, they form a group. Once a group is formed, you can position all the channels contained in that group together. This greatly reduces the normal setup time associated with positioning channels individually.



P6316 MSO Probe

This unique probe design offers two eight-channel pods and simplifies the process of connecting to the device-under-test. When connecting to square pins, the P6316 can connect directly to 8x2 square pin headers spaced on tenth-inch centers. When more attachment flexibility is required, you can use the included flying lead sets and grabbers to clip onto surface mount devices or test points. The P6316 offers outstanding electrical characteristics applying only 8 pF of loading with 101 k Ω input impedance.

FilterVu™ Variable Low-Pass Filter

Tired of being limited to a 20 MHz bandwidth filter in your oscilloscope?

Simply turn on FilterVu and adjust the variable low-pass noise filter. Unlike other variable low-pass filters, FilterVu filters out the unwanted noise from your signal while still capturing glitches and other signal details up to the full bandwidth of the oscilloscope. It does this by showing two waveforms: a waveform that can be filtered (foreground waveform) and a glitch capture waveform (background waveform).

The filtered waveform uses a variable low-pass filter to block out noise, yielding a cleaner waveform to more precisely locate signal edges and amplitude levels. The result is improved confidence in your cursor measurements and cleaner documentation of important signal attributes. When the noise filter is adjusted to the lowest available noise cutoff frequency, no more than 1% of high-frequency content that could cause the oscilloscope to alias will pass through the filter.

The glitch capture waveform shows signal details up to the full bandwidth of the oscilloscope. The oscilloscope captures pulses as narrow as 5 ns, using peak detect min/max sampling, protecting you from missing unexpected glitches or other high-frequency events.

FilterVu is ideal for repetitive, nonrepetitive and single-shot events.

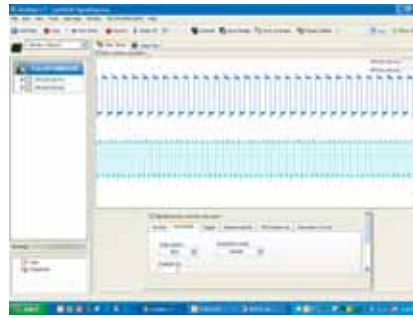


Easily capture, save and analyze measurement results.

PC Connectivity and USB Data Storage

The MSO2000 and DPO2000 Series provides flexibility in data transfer with standard USB host and device ports which enable removable data storage, seamless PC connectivity, and direct printing. Also available are optional GPIB, LAN, and Video-Out adaptors.

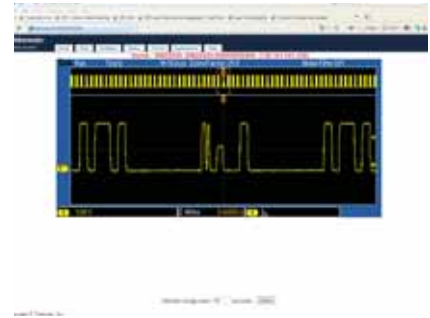
Easily capture, save and analyze measurement results with OpenChoice® Desktop PC Communications software. Simply pull screen images and waveform data into the stand-alone desktop application or directly in Microsoft Word and Excel. To complement OpenChoice, National Instruments LabVIEW SignalExpress™ Tektronix Edition software provides you with extended capabilities, including advanced analysis, remote oscilloscope control and live waveform analysis. Alternatively, if you prefer not to use the PC, you can simply print your image directly to any PictBridge® compatible printer using the USB device port.



NI LabVIEW SignalExpress™ Tektronix Edition - Fully interactive measurement acquisition and analysis software developed jointly with National Instruments, and optimized for the MSO/DPO2000 Series.

TekVPI® Probing

The TekVPI probe interface sets the standard for ease of use in probing. TekVPI probes feature status indicators and controls, as well as a probe menu button right on the input compensation box itself. This button brings up a probe menu on the oscilloscope display with all relevant settings and controls for the probe. The TekVPI interface utilizes a new probe power management architecture enabling direct attachment of current probes (Requires TekVPI External Power Supply - Tektronix Part number: 119-7465-xx). Finally, TekVPI probes can be controlled remotely by using USB, GPIB, or Ethernet, enabling more versatile solutions in ATE environments.



e*Scope enables control of your network connected oscilloscope from any network connected PC through a traditional browser interface.

1 Zoom/Pan – Dedicated front panel controls for zooming and panning. Get from the start to the end of your 1 M record in seconds. The inner control adjusts the zoom factor while the outer ring adjust pans the zoom box across the waveform. Navigating your waveform has never been easier.

2 Marks – Want to mark your waveform for future reference or for quick navigation between events of interest? Simply press the Set Mark button to place “bookmarks” on your waveform. Use the Next and previous buttons to navigate through user marks and search generated marks.

3 Search – Tired of turning the horizontal position control endlessly on your current scope to find the event you’re looking for? Use the MSO/DPO2000’s powerful Search feature to automatically find and mark all occurrences of an event based on user specified criteria. Search types include edge, pulse width, runt, logic, multichannel setup and hold, rise/fall time and I2C, SPI, CAN, LIN, and RS-232/422/485/UART packet content.

4 2 or 4 Analog Channels and 16 Digital Channels – View and trigger on up to 20 time correlated signals on the same display. (16 Digital Channels on MSO models only.)

5 Parallel and Serial Buses – Trigger on parallel or serial packet level content, view acquired data as a bus with all data decoded into hex, binary or ASCII, search through acquisitions for specific content and even view all decoded data in a tabular format, much like you would see on a logic analyzer. Standards supported include I2C, SPI, CAN, LIN, and RS-232/422/485/UART. Analyze up to two buses at the same time. (Parallel is available on MSO models only.)

6 Dedicated Vertical Controls – Vertical controls provide simple and intuitive operation. No longer do you need to share one set of vertical controls across all four channels.

7 Large Widescreen, Digital Phosphor Display – The MSO/DPO2000 Series boasts a bright, 7 inch (180 mm), widescreen display. Discover and troubleshoot design problems faster with 5,000 waveforms/second continuous waveform capture rate and real time intensity grading. Continuous high waveform capture rate saves time by quickly revealing the nature of faults so advanced triggers can be applied to isolate them. Real time intensity grading exposes the “history” of a signal’s activity as they accumulate. The digital phosphor display makes it easier to understand the characteristics of the transients you have captured. It intensifies the areas where the signal trace occurs more frequently.

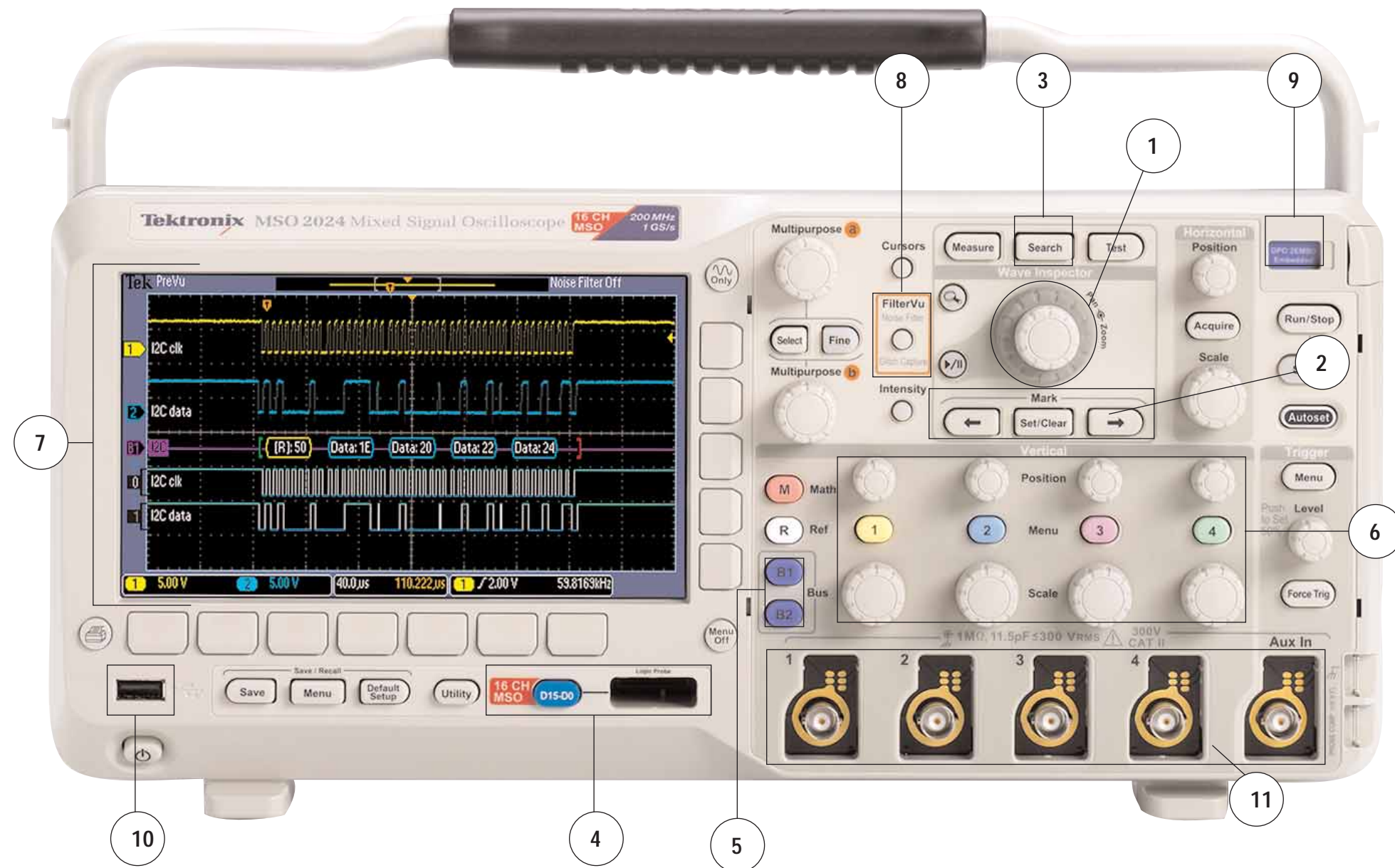
8 FilterVu™ Variable Low-Pass Filter – Tired of dealing with unwanted noise on your signal? Ever wished your oscilloscope had bandwidth limiters below 20 MHz? Simply turn on FilterVu and adjust the variable low-pass noise filter. Unlike other variable low pass filters, FilterVu filters out the unwanted noise from your signal while still capturing glitches and other signal details up to the full bandwidth of the oscilloscope. FilterVu is ideal for repetitive, single-shot and non-repetitive events.

9 Serial Trigger and Decode Application Module – MSO/DPO2000 Series have 2 slots for application modules. Application specific modules extend how you use your oscilloscope by adding serial bus triggering and decode. DPO2AUTO – Automotive serial bus triggering and decode with support for CAN and LIN buses. DPO2COMP- Computer bus serial triggering and decode with support for RS-232/422/485/UART buses. DPO2EMBD – Embedded bus serial triggering and decode with support for I2C and SPI buses.

10 USB – Use the front-panel USB host port for simple and convenient storage of screenshots, waveform data, and oscilloscope setups. Use the rear-panel USB device port to easily communicate and control your oscilloscope from a PC. Or use the rear-panel USB device port to directly print your screen image to any PictBridge® compatible printer.

11 TekVPI® – TekVPI probe interface provides for direct-connect current probes, intuitive comp box controls, remote control of probe settings and smarter communication between the oscilloscope and the probe.

See the MSO/DPO2000 Series in action for yourself. Try out the MSO/DPO2000 Virtual Oscilloscope at: www.tektronix.com/virtualmso2000



Optional LAN and VGA video ports!
- Connect your oscilloscope to your network to remotely control and collect data. Display your screen on an external monitor or projector.



Only 5.3 inches deep!
- Free up valuable space on your bench or desktop.

Characteristics

Vertical System - Analog Channels

Vertical System Analog Channels	MSO2012 DPO2012	MSO2014 DPO2014	MSO2024 DPO2024
Input Channels	2	4	4
Analog Bandwidth*1 (-3 dB)	100 MHz	100 MHz	200 MHz
Calculated Rise Time	3.5 ns	3.5 ns	2.1 ns
Hardware Bandwidth Limits		20 MHz	
Input Coupling		AC, DC, GND	
Input Impedance		1 M Ω \pm 2%, 11.5 pF \pm 2 pF	
Input Sensitivity Range		2 mV/div to 5 V/div	
Vertical Resolution		8 bits	
Max Input Voltage		300 V _{RMS} with peaks \leq 450 V	
DC Gain Accuracy (with offset set to 0 V)		\pm 3% for 10 mV/div to 5 V/div, \pm 4% for 2 mV/div to 5 mV/div	
Offset Range			
2 mV/div to 200 mV/div		\pm 1 V	
>200 mV/div to 5 V/div		\pm 25 V	
Channel-to-Channel Isolation(Any Two Channels at Equal Vertical Scale)	\geq 100:1 at \leq 100 MHz		100:1 at \leq 200 MHz

*1 Bandwidth is 20 MHz at 2 mV/div, all models

Vertical System - Digital Channels

	MSO2012	MSO2014	MSO2024
Input Channels		16 Digital (D15 to D0)	
Thresholds		Threshold per set of 8 channels	
Threshold Selections		TTL, CMOS, ECL, PECL, User Defined	
User Defined Threshold Range		\pm 20 V	
Maximum Input Voltage		\pm 40 V	
Threshold Accuracy		\pm (100 mV + 3% of threshold setting)	
Maximum Input Dynamic Range		80 V _{pk-pk} (threshold setting dependent)	
Minimum Voltage Swing		500 mV _{pk-pk}	
Input Impedance		101 k Ω	
Probe Loading		8 pF	
Vertical Resolution		1 bit	

Horizontal System - Analog Channels

	MSO2012 DPO2012	MSO2014 DPO2014	MSO2024 DPO2024
Maximum Sample Rate (all channels)		1 GS/s	
Minimum Peak Detect Pulse Width	7.0 ns		3.5 ns
Maximum Record Length (all channels)		1 M points	
Maximum Duration of Time Captured at Highest Sample Rate (all channels)		1 ms	
Timebase Range	4 ns to 100 s		2 ns to 100 s
Timebase Delay Time Range		-10 div to 5000 s	
Channel-to-Channel Deskew Range		\pm 100 ns	
Timebase Accuracy		\pm 25 ppm	

Horizontal System - Digital Channels

	MSO2012	MSO2014	MSO2024
Maximum Sample Rate (when using any of channels D7-D0)		1 GS/s (1 ns resolution)	
Maximum Sample Rate (when using any of channels D15-D8)		500 MS/s (2 ns resolution)	
Maximum Record Length		1 M points	
Minimum Detectable Pulse Width		5 ns	
Channel-to-Channel Skew		2 ns typical	

Acquisition Modes

Sample – Acquires sampled values.

Peak Detect – Captures glitches as narrow as 3.5 ns at all sweep speeds.

Averaging – From 2 to 512 waveforms included in average.

Roll – Scrolls waveforms right to left across screen at sweep speeds slower than or equal to 40 ms/div.

Trigger System

Main Trigger Modes – Auto, Normal and Single.

Trigger Coupling – DC, HF reject (attenuates >85 kHz), LF reject (attenuates <65 kHz), noise reject (reduces sensitivity).

Trigger Holdoff Range – 20 ns to 8 s.

Trigger Signal Frequency Counter – Provides a higher accuracy means of identifying the frequency of trigger signals. Trigger Signal Frequency counter resolution is 6 digits.

Trigger Level Range

Any Channel – ±4.92 divisions from center of screen.

External (auxiliary input) – ±6.25V, 1x attenuation; ±12.5V, 10x attenuation.

Sensitivity

Internal DC Coupled

Trigger Source	Sensitivity
Analog Inputs	0.4 division from DC to 50 MHz
	0.6 divisions >50 MHz to 100 MHz
	0.8 divisions >100 MHz to 200 MHz
External (Auxiliary Input)	200 mV from DC to 100 MHz, 1x attenuation

Trigger Modes

Edge – Positive or negative slope on any channel or front-panel auxiliary input. Coupling includes DC, HF reject, LF reject, and noise reject.

Pulse Width – Trigger on width of positive or negative pulses that are >, <, =, or ≠ to a specified period of time.

Runt – Trigger on a pulse that crosses one threshold but fails to cross a second threshold before crossing the first again.

Logic – Trigger when any logical pattern of channels goes false or stays true for specified period of time. Any input can be used as a clock to look for the pattern on a clock edge. Pattern (AND, NAND) specified for all analog and digital input channels defined as High, Low, or Don't Care.

Setup and Hold – Trigger on violations of both setup time and hold time between clock and data present on any of the input channels.

Rise/Fall Time – Trigger on pulse edge rates that are faster or slower than specified. Slope may be positive, negative, or either.

Video – Trigger on line number, all lines, odd, even, or all fields on NTSC, PAL and SECAM video signals.

I²C (Optional) – Trigger on Start, Repeated Start, Stop, Missing ACK, Address (7 or 10 bit), Data, or Address and Data on I²C buses up to 3.4 Mb/s.

SPI (Optional) – Trigger on SS, Idle Time, MOSI, MISO, or MOSI and MISO on SPI buses up to 10.0 Mb/s.

CAN (Optional) – Trigger on Start of Frame, Frame Type (data, remote, error, overload), Identifier (standard or extended), Data, Identifier and Data, End of Frame, Missing ACK, or Bit Stuffing Errors on CAN signals up to 1 Mb/s. Data can be further specified to trigger on ≤, <, =, >, ≥ or ≠ a specific data value. User-adjustable sample point is set to 50% by default.

RS-232/422/485/UART (Optional) – Trigger on Tx start bit, Rx start bit, Tx end of packet, Rx end of packet, Tx data, Rx data, Tx Parity Error, and Rx Parity Error.

LIN (Optional) – Trigger on Sync, Identifier, Data, Identifier and Data, Wakeup Frame, Sleep Frame, or Errors such as Sync Parity or Checksum Errors.

Parallel (available on MSO models only) – Trigger on a parallel bus data value.

Waveform Measurements

Cursors – Waveform and Screen

Automatic Measurements – 29, of which up to four can be displayed on screen at any one time. Measurements include Frequency, Period, Delay, Rise Time, Fall Time, Positive Duty Cycle, Negative Duty Cycle, Positive Pulse Width, Negative Pulse Width, Burst Width, Phase, Positive Overshoot, Negative Overshoot, Peak-to-Peak, Amplitude, High, Low, Max, Min, Mean, Cycle Mean, RMS, Cycle RMS, Positive Pulse Count, Negative Pulse Count, Rising Edge Count, Falling Edge Count, Area and Cycle Area.

Gating – Isolate the specific occurrence within an acquisition to take measurements, using either the screen or waveform cursors.

Waveform Math

Arithmetic – Add, subtract, and multiply waveforms.

Software

NI LabVIEW SignalExpress™ Tektronix Edition LE –

A fully interactive measurement software environment optimized for the MSO2000/DPO2000 Series, enables you to instantly acquire, generate, analyze, compare, import, and save measurement data and signals using an intuitive drag-and-drop user interface that does not require any programming. Standard MSO2000/DPO2000 Series support for acquiring, controlling, viewing and exporting your live signal data is permanently available through the software. The full version (SIGEXPT) adds additional signal processing, advanced analysis, mixed signal, sweeping, limit testing, and user-defined step capabilities and is available for a 30-day trial period standard with each instrument.

OpenChoice® Desktop – Enables fast and easy communication between a Windows PC and the MSO2000/DPO2000 Series, using USB or LAN. Transfer and save settings, waveforms, measurements and screen images.

IVI Driver – Provides a standard instrument programming interface for common applications such as LabVIEW, LabWindows/CVI, Microsoft .NET and MATLAB.

Digital Phosphor Oscilloscopes

MSO2000 Series • DPO2000 Series

Display Characteristics

Display Type – 7 in (180 mm) liquid crystal TFT color display.

Display Resolution – 480 horizontal x 234 vertical pixels (WQVGA).

Waveform Styles – Vectors, Dots (In Video Trigger mode), Variable Persistence, Infinite Persistence.

Graticules – Full, Grid, Cross Hair, Frame.

Format – YT and XY.

Waveform Capture Rate – Up to 5,000 wfms/sec.

Input/Output Ports

USB 2.0 High-Speed Host Port – Supports USB data storage devices and keyboards.

USB 2.0 High-Speed Device Port – Rear-panel port supports communication/control of oscilloscope by PC and all PictBridge® compatible printers.

LAN Port – RJ-45 connector, supports 10/100Base-T (requires DPO2CONN).

GPIO – Adapt USB 2.0 device port to a GPIO port (requires TEK-USB-488).

Video Out Port – DB-15 female connector, connect to show the oscilloscope display on an external monitor or projector (requires DPO2CONN).

Auxiliary Input – Front-panel BNC connector. Input Impedance 1 M Ω \pm 2%. Max input 300 V_{RMS} with peaks \pm 450 V.

Probe Compensator Output – Front-panel pins, Amplitude 5.0 V, Frequency 1 kHz.

Kensington Lock – Rear-panel security slot connects to standard Kensington style lock.

Power Source

Power Source Voltage – 100 to 240 V \pm 10%.

Power Source Frequency – 45 to 65 Hz (90 to 264 V), 360 to 440 Hz (100 to 132 V).

Power Consumption – 80 W maximum.

TekVPI External Power Supply (119-7465-xx) –

Output voltage: 12 V; Output current: 4.2 A; Power consumption: 50 W.

Physical Characteristics

Dimensions	mm	in
Height	180	7.1
Width	377	14.9
Depth	134	5.3
Weight	kg	lb
Net	3.6	7.9
Shipping	6.2	13.7

Rackmount Configuration - 4 U

Cooling Clearance - 50 mm (2 inches) on the left side and rear (when looking at the front of the instrument).

General Characteristics

Environmental

Temperature

Operating – 0 °C to +50 °C.

Nonoperating – -40 °C to +71 °C.

Humidity

Operating – High: 30 °C to 50 °C, 5% to 60% Relative Humidity. Low: 0 °C to 30 °C, 5% to 95% Relative Humidity.

Nonoperating – High: 30 °C to 55 °C, 5% to 60% Relative Humidity. Low: 0 °C to 30 °C, 5% to 95% Relative Humidity.

Altitude

Operating – 3,000 meters (9,843 feet).

Nonoperating – 12,000 meters (39,370 feet).

Random Vibration

Operating – 0.31 G_{RMS} from 5 to 500 Hz, 10 minutes each axis, 3 axes, 30 minutes total.

Nonoperating – 2.46 G_{RMS} from 5 to 500 Hz, 10 minutes each axis, 3 axes, 30 minutes total.

Regulatory

Electromagnetic Compatibility – 2004/108/EC.

Safety – Listed UL61010-1: 2004, CAN/CSA-C22.2 No. 61010.1: 2004; Complies with EN61010-1: 2001, Complies with the Low Voltage Directive 2004/108/EC for Product Safety.

MSO2000 Models

MSO2012– 100 MHz, 1 GS/s, 1 M record length, 2+16 channel mixed signal oscilloscope.

MSO2014– 100 MHz, 1 GS/s, 1 M record length, 4+16 channel mixed signal oscilloscope.

MSO2024– 200 MHz, 1 GS/s, 1 M record length, 4+16 channel mixed signal oscilloscope.

DPO2000 Models

DPO2012– 100 MHz, 1 GS/s, 1 M record length, 2-channel digital phosphor oscilloscope.

DPO2014– 100 MHz, 1 GS/s, 1 M record length, 4-channel digital phosphor oscilloscope.

DPO2024– 200 MHz, 1 GS/s, 1 M record length, 4-channel digital phosphor oscilloscope.

All models include: One P2221 200 MHz, 1x/10x Passive Probe per Analog Channel, User Manual and Translated Front-Panel Overlay, Documentation CD (063-4118-xx), OpenChoice® Desktop Software, NI LabVIEW SignalExpress™ Tektronix Edition LE Software, Calibration certificates document measurement traceability to National Metrology Institute(s) and ISO9001 Quality System Registration, Power Cord, and a three-year warranty. MSO models also include one P6316 16-channel logic probe and accessory kit, and accessory bag (016-2008-xx).

Please specify power plug and manual version when ordering.

Recommended Serial Bus Application Modules

DPO2EMBD– Embedded Serial Triggering and Analysis Module. Enables triggering on packet level information on I²C and SPI buses as well as analytical tools such as bus views, packet decoding, search tools, and packet decode tables with timestamp information.

DPO2COMP– Computer Serial Triggering and Analysis Module. Enables triggering on packet level information on RS-232/422/485/UART buses as well as analytical tools such as bus views, packet decoding, search tools, and packet decode tables with timestamp information.

DPO2AUTO– Automotive Serial Triggering and Analysis Module. Enables triggering on packet level information on CAN and LIN buses as well as analytical tools such as bus views, packet decoding, search tools, and packet decode tables with timestamp information.

Options

International Power Plugs

- Opt. A0– North America power.
- Opt. A1– Universal EURO power.
- Opt. A2– United Kingdom power.
- Opt. A3– Australia power.
- Opt. A5– Switzerland power.
- Opt. A6– Japan power.
- Opt. A10– China power.
- Opt. A11– India power.
- Opt. A99– No power cord or AC adapter.

Language Options*1

- Opt. L0– English manual.
- Opt. L1– French manual.
- Opt. L2– Italian manual.
- Opt. L3– German manual.
- Opt. L4– Spanish manual.
- Opt. L5– Japanese manual.
- Opt. L6– Portuguese manual.
- Opt. L7– Simplified Chinese manual.
- Opt. L8– Standard Chinese manual.
- Opt. L9– Korean manual.
- Opt. L10– Russian manual.
- Opt. L99– No manual.

Service Options*2

- Opt. C3– Calibration Service 3 years.
- Opt. C5– Calibration Service 5 years.
- Opt. CA1– Provides a single calibration event, or coverage for the designated calibration interval, whichever comes first.
- Opt. D1– Calibration Data Report.
- Opt. D3– Calibration Data Report 3 years (with Opt. C3).
- Opt. D5– Calibration Data Report 5 Years (with Opt. C5).
- Opt. R5– Repair Service 5 years (including warranty).

Recommended Probes

- TAP1500*3– 1.5 GHz TekVPI™ single-ended active probe.
- TDP0500*3,*5– 500 MHz TekVPI™ 42 V differential probe.
- TCP0030*3– 120 MHz TekVPI™ 30 Ampere AC/DC current probe.
- TCP0150*3– 20 MHz TekVPI™ 150 Ampere AC/DC current probe.
- TCPA300/400*6– Current measurement system amplifiers.
- TCP305– DC to 50 MHz, 50 A current probe for use with TCPA300.
- TCP404XL– DC to 2 MHz, 500 A current probe for use with TCPA400.
- P5100– 2.5 kV, 100X high-voltage passive probe.
- P5200– 1.3 kV, 50X/500X, 25 MHz high-voltage active differential probe.
- P5205*3,*4– 1.3 kV, 100 MHz high-voltage differential probe.
- P5210*3,*4– 5.6 kV, 50 MHz high-voltage differential probe.
- ADA400A*3,*4– 100x, 10x, 1x, 0.1x high-gain differential amplifier.



Soft carrying case with front protective cover for MSO2000 and DPO2000 Series (ACD2000).

Recommended Accessories

- DPO2CONN – Adds Ethernet (10/100Base-T) and Video Out Port.
- Service manual – Order 071-2331-xx (English only).
- TPA-BNC*3 – TekVPI to TekProbe BNC Adapter.
- TekVPI External Power Supply – Order 119-7465-xx.
- TEK-USB-488 – GPIB to USB Adapter.
- Digital Probe Leadset (8 Channels) – Order 196-3508-xx.
- TEK-DPG*3 – TekVPI Deskew Pulse Generator Signal Source.
- Deskew and Calibration Fixture – Order 067-1686-xx.
- Rackmount Kit – Order RMD2000. Does not include slide-out rails.
- Soft Transit Case and Front Protective Cover – Order ACD2000.
- Front Protective Cover – Order 200-5045-xx.
- Hard Transit Case – Order HCTEK4321 (Requires ACD2000).
- SIGEXPTE – NI LabVIEW SignalExpress™ Tektronix Edition Software (Full Version).
- USB Keyboard – Order 119-7083-00.

Warranty

Three-year warranty covering all parts and labor, excluding probes.

*1 Language options include translated front-panel overlay for the selected language(s).

*2 Probes and accessories are not covered by the oscilloscope warranty and Service Offerings. Refer to the datasheet of each probe and accessory model for its unique warranty and calibration terms.

*3 Requires TekVPI external power adapter (119-7465-00); one per oscilloscope.

*4 Requires TPA-BNC adapter.

*5 Probes terminate into 50 Ω but oscilloscope will automatically adjust to account for 1 MΩ input.

*6 Requires 50 Ω feed through termination between the oscilloscope input and the BNC cable.

Digital Phospor Oscilloscopes
MSO2000 Series • DPO2000 Series

Contact Tektronix:

ASEAN / Australasia (65) 6356 3900
Austria +41 52 675 3777
Balkans, Israel, South Africa and other ISE Countries +41 52 675 3777
Belgium 07 81 60166
Brazil & South America (11) 40669400
Canada 1 (800) 661-5625
Central East Europe, Ukraine and the Baltics +41 52 675 3777
Central Europe & Greece +41 52 675 3777
Denmark +45 80 88 1401
Finland +41 52 675 3777
France +33 (0) 1 69 86 81 81
Germany +49 (221) 94 77 400
Hong Kong (852) 2585-6688
India (91) 80-22275577
Italy +39 (02) 25086 1
Japan 81 (3) 6714-3010
Luxembourg +44 (0) 1344 392400
Mexico, Central America & Caribbean 52 (55) 5424700
Middle East, Asia and North Africa +41 52 675 3777
The Netherlands 090 02 021797
Norway 800 16098
People's Republic of China 86 (10) 6235 1230
Poland +41 52 675 3777
Portugal 80 08 12370
Republic of Korea 82 (2) 6917-5000
Russia & CIS +7 (495) 7484900
South Africa +27 11 206 8360
Spain (+34) 901 988 054
Sweden 020 08 80371
Switzerland +41 52 675 3777
Taiwan 886 (2) 2722-9622
United Kingdom & Eire +44 (0) 1344 392400
USA 1 (800) 426-2200
For other areas contact Tektronix, Inc. at: 1 (503) 627-7111
Updated 12 November 2007

For Further Information

Tektronix maintains a comprehensive, constantly expanding collection of application notes, technical briefs and other resources to help engineers working on the cutting edge of technology. Please visit www.tektronix.com



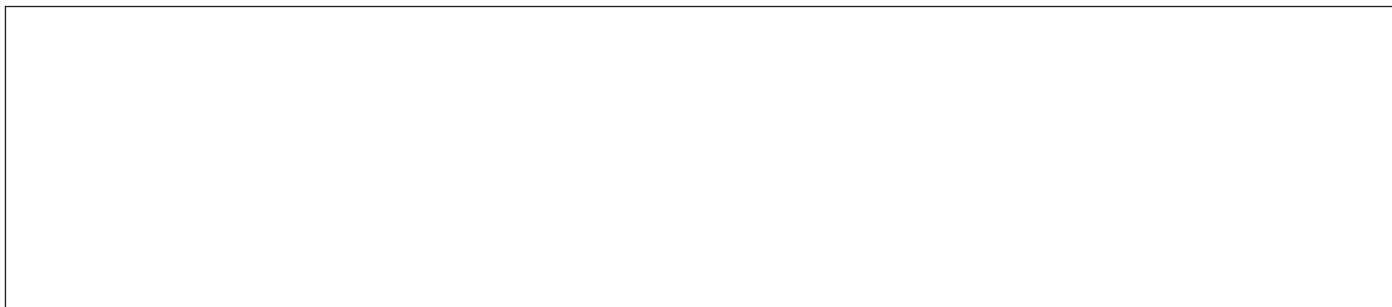
Product(s) are manufactured in ISO registered facilities.

Product(s) complies with IEEE Standard 488.1-1987, RS-232-C, and with Tektronix Standard Codes and Formats.

Copyright © 2008, Tektronix. All rights reserved. Tektronix products are covered by U.S. and foreign patents, issued and pending. Information in this publication supersedes that in all previously published material. Specification and price change privileges reserved. TEKTRONIX and TEK are registered trademarks of Tektronix, Inc. All other trade names referenced are the service marks, trademarks or registered trademarks of their respective companies.

10/08 WOW

3GW-22048-0



Компания «Life Electronics» занимается поставками электронных компонентов импортного и отечественного производства от производителей и со складов крупных дистрибьюторов Европы, Америки и Азии.

С конца 2013 года компания активно расширяет линейку поставок компонентов по направлению коаксиальный кабель, кварцевые генераторы и конденсаторы (керамические, пленочные, электролитические), за счёт заключения дистрибьюторских договоров

Мы предлагаем:

- Конкурентоспособные цены и скидки постоянным клиентам.
- Специальные условия для постоянных клиентов.
- Подбор аналогов.
- Поставку компонентов в любых объемах, удовлетворяющих вашим потребностям.
- Приемлемые сроки поставки, возможна ускоренная поставка.
- Доставку товара в любую точку России и стран СНГ.
- Комплексную поставку.
- Работу по проектам и поставку образцов.
- Формирование склада под заказчика.
- Сертификаты соответствия на поставляемую продукцию (по желанию клиента).
- Тестирование поставляемой продукции.
- Поставку компонентов, требующих военную и космическую приемку.
- Входной контроль качества.
- Наличие сертификата ISO.

В составе нашей компании организован Конструкторский отдел, призванный помогать разработчикам, и инженерам.

Конструкторский отдел помогает осуществить:

- Регистрацию проекта у производителя компонентов.
- Техническую поддержку проекта.
- Защиту от снятия компонента с производства.
- Оценку стоимости проекта по компонентам.
- Изготовление тестовой платы монтаж и пусконаладочные работы.



Тел: +7 (812) 336 43 04 (многоканальный)

Email: org@lifeelectronics.ru