

Type SC10, SC15, SC30, SC55 Series

Key Features

- Wide Inductance Range
- Insulated Packaging
- Four Sizes
- Flame Retardant
- Wide Temperature Range
- Established Reliability
- Fully Protected from the Environment
- Available from Distribution



TE Connectivity quality and reliability are guaranteed in this range of insulated and shielded RF Inductors. The insulated range has a self-extinguishing polyolefin sleeve. Their small size make them ideal for use when space is at a premium. And they are also fully protected from environmental factors. Electrostatic and electromagnetic screening is provided by the magnetic enclosure. A wide range of values are available and the self-extinguishing polyolefin sleeve enhances environmental protection. The SC series was originally designed for military applications but now has widespread industrial use.

Characteristics - Electrical

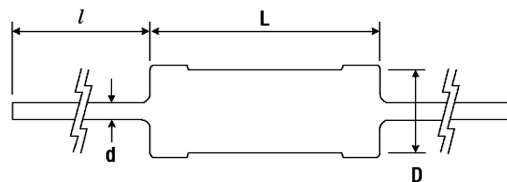
| | SC10 | SC15 | SC30 | SC55 |
|---|-------------------------------|--|-----------------|-----------------|
| Inductance Range: | | See Table - E12 Grid (Non-standard values available to special order) | | |
| Selection Tolerance: | ±10% | ±10% | ±10% | ±10% |
| Power Rating at 70°C: | 0.33W | See Below | 0.25W | 0.30W |
| Isolation Voltage: | 700V DC or AC peak | | | |
| Limits of Inductance Change: | 5% after 1000 hours endurance | | | |
| Operating Temperature Range: | -55°C to +100°C | -55°C to +100°C | -55°C to +100°C | -55°C to +125°C |
| Recommended Storage Temperature: | 0°C to +35°C | | | |
| Climatic Category: | 55/100/21 | 55/100/21 | 55/100/21 | 55/125/21 |

SC15 Power Rating Values between 0.15uH and 4.7uH - Power Rating 0.33 Watt
 Values between 5.6uH and 330uH - Power Rating 0.20 Watt

Packaging and Marking

| Type | Ammo Pack | Reeled | Weight per Component | Marking |
|------|------------|-------------|----------------------|---------|
| SC10 | 500 Pieces | 1500 Pieces | - | LC10 |
| SC15 | 500 Pieces | 1500 Pieces | - | LC15 |
| SC30 | 500 Pieces | 2500 Pieces | - | LC30 |
| SC55 | 500 Pieces | 1500 Pieces | 0.6g | LC55 |

Dimensions



| Size | L Max. | D Max. | l Min. | d |
|------|--------|--------|--------|-------|
| SC10 | 10.0mm | 4.2mm | 25mm | 0.6mm |
| SC15 | 10.0mm | 4.5mm | 30mm | 0.6mm |
| SC30 | 7.0mm | 2.8mm | 25mm | 0.5mm |
| SC55 | 11.4mm | 5.2mm | 30mm | 0.6mm |

Type SC10, SC15, SC30, SC55 Series

Characteristics - Electrical - Type SC10 - Section 1

| Inductance Value - μ H | Inductance Code | Test Freq. MHz | Q Factor Min. | S.R.F. MHz Min. | Max. DC Resistance Ohms at 20°C | Direct Current at 70°C Max. mA |
|----------------------------|-----------------|----------------|---------------|-----------------|---------------------------------|--------------------------------|
| 0.10 | R10 | 25 | 50 | 500 | 0.055 | 2060 |
| 0.12 | R12 | 25 | 50 | 475 | 0.060 | 1970 |
| 0.15 | R15 | 25 | 50 | 450 | 0.065 | 1900 |
| 0.18 | R18 | 25 | 50 | 425 | 0.070 | 1830 |
| 0.22 | R22 | 25 | 50 | 400 | 0.075 | 1770 |
| 0.27 | R27 | 25 | 50 | 380 | 0.085 | 1660 |
| 0.33 | R33 | 25 | 50 | 360 | 0.095 | 1570 |
| 0.39 | R39 | 25 | 50 | 330 | 0.11 | 1460 |
| 0.47 | R47 | 25 | 50 | 300 | 0.12 | 1390 |
| 0.56 | R56 | 25 | 50 | 280 | 0.14 | 1290 |
| 0.68 | R68 | 25 | 45 | 260 | 0.16 | 1210 |
| 0.82 | R82 | 25 | 45 | 235 | 0.26 | 950 |
| 1.0 | 1R0 | 25 | 45 | 210 | 0.30 | 880 |
| 1.2 | 1R2 | 7.9 | 32 | 190 | 0.50 | 685 |
| 1.5 | 1R5 | 7.9 | 32 | 170 | 0.60 | 625 |
| 1.8 | 1R8 | 7.9 | 32 | 156 | 0.75 | 560 |
| 2.2 | 2R2 | 7.9 | 32 | 140 | 1.10 | 460 |
| 2.7 | 2R7 | 7.9 | 32 | 125 | 1.40 | 410 |
| 3.3 | 3R3 | 7.9 | 32 | 115 | 1.90 | 350 |

Type SC10 - Section 2

| Inductance Value - μ H | Inductance Code | Test Freq. MHz | Q Factor Min. | S.R.F. MHz Min. | Max. DC Resistance Ohms at 20°C | Direct Current at 70°C Max. mA |
|----------------------------|-----------------|----------------|---------------|-----------------|---------------------------------|--------------------------------|
| 3.9 | 3R9 | 7.9 | 45 | 75 | 0.25 | 970 |
| 4.7 | 4R7 | 7.9 | 45 | 65 | 0.35 | 820 |
| 5.6 | 5R6 | 7.9 | 45 | 60 | 0.40 | 765 |
| 6.8 | 6R8 | 7.9 | 45 | 55 | 0.55 | 650 |
| 8.2 | 8R2 | 7.9 | 45 | 50 | 0.75 | 560 |
| 10 | 100 | 7.9 | 45 | 45 | 0.9 | 510 |
| 12 | 120 | 2.5 | 55 | 40 | 1.1 | 460 |
| 15 | 150 | 2.5 | 55 | 35 | 1.5 | 395 |
| 18 | 180 | 2.5 | 55 | 30 | 2.7 | 295 |
| 22 | 220 | 2.5 | 55 | 27 | 3.0 | 280 |
| 27 | 270 | 2.5 | 55 | 25 | 4.5 | 230 |
| 33 | 330 | 2.5 | 55 | 22 | 5.2 | 210 |
| 39 | 390 | 2.5 | 55 | 20 | 7.5 | 175 |
| 47 | 470 | 2.5 | 55 | 18 | 9.6 | 156 |

Type SC10 - Section 3

| Inductance Value - μ H | Inductance Code | Test Freq. MHz | Q Factor Min. | S.R.F. MHz Min. | Max. DC Resistance Ohms at 20°C | Direct Current at 70°C Max. mA |
|----------------------------|-----------------|----------------|---------------|-----------------|---------------------------------|--------------------------------|
| 56 | 560 | 2.5 | 55 | 11 | 8.1 | 170 |
| 68 | 680 | 2.5 | 55 | 10 | 9.0 | 161 |
| 82 | 820 | 2.5 | 50 | 8.5 | 10.0 | 153 |
| 100 | 101 | 2.5 | 50 | 7.0 | 11.0 | 146 |
| 120 | 121 | 0.79 | 40 | 6.5 | 12.0 | 140 |
| 150 | 151 | 0.79 | 40 | 5.5 | 13.0 | 134 |
| 180 | 181 | 0.79 | 45 | 5.0 | 15.0 | 125 |
| 220 | 221 | 0.79 | 45 | 4.2 | 17.0 | 117 |
| 270 | 271 | 0.79 | 45 | 3.8 | 19.5 | 110 |
| 330 | 331 | 0.79 | 45 | 3.3 | 22.0 | 103 |
| 390 | 391 | 0.79 | 45 | 3.1 | 24.5 | 98 |
| 470 | 471 | 0.79 | 45 | 2.9 | 26.5 | 94 |
| 560 | 561 | 0.79 | 45 | 2.7 | 30.0 | 88 |
| 680 | 681 | 0.79 | 45 | 2.5 | 33.0 | 84 |
| 820 | 821 | 0.79 | 45 | 2.3 | 36.5 | 80 |
| 1000 | 102 | 0.79 | 40 | 2.2 | 40.0 | 76 |

Section 1 was formerly the TE Connectivity C10 Series, Section 2 was formerly the TE Connectivity C11 Series, Section 3 was formerly the TE Connectivity C12 Series

Type SC10, SC15, SC30, SC55 Series

Characteristics - Electrical Type SC15

| Inductance Value - μ H | Inductance Code | Test Freq. MHz | Q Factor Min. | S.R.F. MHz Min. | Max. DC Resistance Ohms at 20°C | Direct Current at 70°C Max. mA |
|----------------------------|-----------------|----------------|---------------|-----------------|---------------------------------|--------------------------------|
| 0.15 | R15 | 25 | 50 | 525 | 0.030 | 2790 |
| 0.18 | R18 | 25 | 45 | 480 | 0.040 | 2420 |
| 0.22 | R22 | 25 | 50 | 450 | 0.055 | 2060 |
| 0.27 | R27 | 25 | 45 | 400 | 0.070 | 1830 |
| 0.33 | R33 | 25 | 45 | 360 | 0.090 | 1610 |
| 0.39 | R39 | 25 | 45 | 350 | 0.100 | 1530 |
| 0.47 | R47 | 25 | 45 | 310 | 0.120 | 1400 |
| 0.56 | R56 | 25 | 50 | 280 | 0.135 | 1320 |
| 0.68 | R68 | 25 | 50 | 250 | 0.15 | 1250 |
| 0.82 | R82 | 25 | 50 | 220 | 0.22 | 1030 |
| 1.0 | 1R0 | 25 | 50 | 200 | 0.29 | 900 |
| 1.2 | 1R2 | 7.9 | 33 | 180 | 0.42 | 750 |
| 1.5 | 1R5 | 7.9 | 33 | 160 | 0.50 | 685 |
| 1.8 | 1R8 | 7.9 | 33 | 150 | 0.65 | 600 |
| 2.2 | 2R2 | 7.9 | 33 | 135 | 0.95 | 495 |
| 2.7 | 2R7 | 7.9 | 33 | 120 | 1.20 | 440 |
| 3.3 | 3R3 | 7.9 | 33 | 110 | 2.00 | 340 |
| 3.9 | 3R9 | 7.9 | 33 | 100 | 2.30 | 320 |
| 4.7 | 4R7 | 7.9 | 33 | 90 | 2.60 | 300 |
| 5.6 | 5R6 | 7.9 | 45 | 60 | 0.32 | 690 |
| 6.8 | 6R8 | 7.9 | 50 | 55 | 0.50 | 550 |
| 8.2 | 8R2 | 7.9 | 50 | 50 | 0.60 | 505 |
| 10 | 100 | 7.9 | 55 | 45 | 0.90 | 415 |
| 12 | 120 | 2.5 | 65 | 42 | 1.10 | 375 |
| 15 | 150 | 2.5 | 65 | 40 | 1.40 | 330 |
| 18 | 180 | 2.5 | 75 | 34 | 2.25 | 260 |
| 22 | 220 | 2.5 | 75 | 30 | 2.50 | 250 |
| 24* | 240* | 2.5 | 60 | 27 | 2.50 | 250 |
| 27 | 270 | 2.5 | 60 | 25 | 2.60 | 242 |
| 30 | 300 | 2.5 | 65 | 21 | 2.80 | 230 |
| 33 | 330 | 2.5 | 65 | 19 | 3.00 | 227 |
| 36* | 360* | 2.5 | 60 | 15.5 | 2.50 | 250 |
| 39 | 390 | 2.5 | 60 | 14.5 | 2.60 | 244 |
| 43* | 430* | 2.5 | 60 | 13.7 | 2.70 | 238 |
| 47 | 470 | 2.5 | 55 | 13.0 | 2.75 | 235 |
| 51* | 510* | 2.5 | 55 | 12.7 | 2.85 | 231 |
| 56 | 560 | 2.5 | 55 | 12.0 | 3.00 | 225 |
| 62* | 620* | 2.5 | 55 | 11.5 | 3.15 | 220 |
| 68 | 680 | 2.5 | 55 | 11.0 | 3.30 | 215 |
| 75* | 750* | 2.5 | 55 | 10.5 | 3.70 | 203 |
| 82 | 820 | 2.5 | 50 | 10.3 | 3.90 | 200 |
| 91* | 910* | 2.5 | 50 | 10.0 | 4.30 | 188 |
| 100 | 101 | 2.5 | 50 | 9.5 | 4.50 | 185 |
| 110* | 111* | 0.79 | 60 | 8.9 | 4.90 | 176 |
| 120 | 121 | 0.79 | 65 | 8.7 | 5.20 | 170 |
| 130* | 131* | 0.79 | 65 | 8.5 | 5.45 | 167 |
| 150 | 151 | 0.79 | 65 | 8.0 | 6.05 | 160 |
| 160* | 161* | 0.79 | 65 | 7.5 | 6.40 | 154 |
| 180 | 181 | 0.79 | 65 | 7.0 | 6.75 | 150 |
| 200* | 201* | 0.79 | 65 | 6.5 | 7.10 | 147 |
| 220 | 221 | 0.79 | 65 | 6.2 | 7.45 | 144 |
| 240* | 241* | 0.79 | 65 | 5.9 | 7.80 | 140 |
| 270 | 271 | 0.79 | 65 | 5.7 | 9.00 | 131 |
| 300* | 301* | 0.79 | 65 | 5.4 | 11.50 | 118 |
| 330 | 331 | 0.79 | 65 | 5.1 | 12.50 | 111 |

Type SC10, SC15, SC30, SC55 Series

Characteristics - Electrical Type SC30

| Inductance Value - μ H | Inductance Code | Test Freq. MHz | Q Factor Min. | S.R.F. MHz Min. | Max. DC Resistance Ohms at 20°C | Direct Current at 70°C Max. mA |
|----------------------------|-----------------|----------------|---------------|-----------------|---------------------------------|--------------------------------|
| 0.022 | R022 | 50 | 33 | 1245 | 0.006 | 3000 |
| 0.027 | R027 | 50 | 33 | 1200 | 0.010 | 2800 |
| 0.033 | R033 | 50 | 33 | 1175 | 0.026 | 2620 |
| 0.039 | R039 | 50 | 33 | 1130 | 0.033 | 2320 |
| 0.047 | R047 | 50 | 33 | 1060 | 0.038 | 2170 |
| 0.056 | R056 | 50 | 33 | 990 | 0.048 | 1930 |
| 0.068 | R068 | 50 | 33 | 900 | 0.055 | 1800 |
| 0.082 | R082 | 50 | 33 | 750 | 0.065 | 1650 |
| 0.10 | R10 | 25 | 40 | 680 | 0.080 | 1490 |
| 0.12 | R12 | 25 | 40 | 640 | 0.090 | 1400 |
| 0.15 | R15 | 25 | 38 | 600 | 0.10 | 1330 |
| 0.18 | R18 | 25 | 35 | 550 | 0.12 | 1210 |
| 0.22 | R22 | 25 | 33 | 510 | 0.14 | 1120 |
| 0.27 | R27 | 25 | 33 | 430 | 0.16 | 1050 |
| 0.33 | R33 | 25 | 30 | 410 | 0.22 | 900 |
| 0.39 | R39 | 25 | 30 | 365 | 0.30 | 770 |
| 0.47 | R47 | 25 | 30 | 330 | 0.35 | 710 |
| 0.56 | R56 | 25 | 30 | 300 | 0.50 | 595 |
| 0.68 | R68 | 25 | 28 | 275 | 0.60 | 540 |
| 0.82 | R82 | 25 | 28 | 250 | 0.85 | 455 |
| 1.0 | 1R0 | 25 | 25 | 230 | 1.00 | 420 |
| 1.2 | 1R2 | 7.9 | 25 | 150 | 0.18 | 990 |
| 1.5 | 1R5 | 7.9 | 28 | 140 | 0.22 | 895 |
| 1.8 | 1R8 | 7.9 | 30 | 125 | 0.30 | 765 |
| 2.2 | 2R2 | 7.9 | 30 | 115 | 0.40 | 665 |
| 2.7 | 2R7 | 7.9 | 37 | 100 | 0.55 | 565 |
| 3.3 | 3R3 | 7.9 | 45 | 90 | 0.85 | 455 |
| 3.9 | 3R9 | 7.9 | 45 | 80 | 1.0 | 420 |
| 4.7 | 4R7 | 7.9 | 45 | 75 | 1.2 | 384 |
| 5.6 | 5R6 | 7.9 | 50 | 65 | 1.8 | 314 |
| 6.8 | 6R8 | 7.9 | 50 | 60 | 2.0 | 298 |
| 8.2 | 8R2 | 7.9 | 55 | 55 | 2.7 | 256 |
| 10 | 100 | 7.9 | 55 | 50 | 3.7 | 219 |
| 12 | 120 | 2.5 | 45 | 40 | 2.7 | 256 |
| 15 | 150 | 2.5 | 45 | 35 | 2.8 | 251 |
| 18 | 180 | 2.5 | 50 | 30 | 3.1 | 239 |
| 22 | 220 | 2.5 | 50 | 25 | 3.3 | 232 |
| 27 | 270 | 2.5 | 50 | 20 | 3.5 | 225 |
| 33 | 330 | 2.5 | 45 | 24 | 3.4 | 228 |
| 39 | 390 | 2.5 | 45 | 22 | 3.6 | 222 |
| 47 | 470 | 2.5 | 45 | 20 | 4.5 | 198 |
| 56 | 560 | 2.5 | 45 | 18 | 5.7 | 176 |
| 68 | 680 | 2.5 | 50 | 15 | 6.7 | 162 |
| 82 | 820 | 2.5 | 50 | 14 | 7.3 | 156 |
| 100 | 101 | 2.5 | 50 | 13 | 8.0 | 149 |
| 120 | 121 | 0.79 | 30 | 12 | 13.0 | 116 |
| 150 | 151 | 0.79 | 30 | 11 | 15.0 | 108 |
| 180 | 181 | 0.79 | 30 | 10 | 17.0 | 102 |
| 220 | 221 | 0.79 | 30 | 9 | 21.0 | 92 |
| 270 | 271 | 0.79 | 30 | 8 | 25.0 | 84 |
| 330 | 331 | 0.79 | 30 | 7 | 28.0 | 79 |
| 390 | 391 | 0.79 | 30 | 6.5 | 35.0 | 71 |
| 470 | 471 | 0.79 | 30 | 6 | 42.0 | 65 |
| 560 | 561 | 0.79 | 30 | 5 | 46.0 | 62 |
| 680 | 681 | 0.79 | 30 | 4 | 60.0 | 54 |
| 820 | 821 | 0.79 | 30 | 3.8 | 65.0 | 52 |
| 1000 | 102 | 0.79 | 30 | 3.4 | 72.0 | 49 |

The SC30 Series was formerly the TE Connectivity C30 Series

Type SC10, SC15, SC30, SC55 Series

Characteristics - Electrical Type SC55

| Inductance Value (μ H) | Inductance Code | Q Min. | Test Freq MHz | S.R.F. MHz Min. | Max. DC Resistance Ohms | Direct Current at 85°C Max. mA | Body Marking |
|-----------------------------|-----------------|--------|---------------|-----------------|-------------------------|--------------------------------|--------------|
| 1.0 | 1R0 | 45 | 7.9 | 190.0 | 0.04 | 2200 | 1uH0-K |
| 1.5 | 1R5 | 65 | 7.9 | 155.0 | 0.05 | 2000 | 1uH5-K |
| 2.2 | 2R2 | 60 | 7.9 | 130.0 | 0.06 | 1800 | 2uH2-K |
| 3.3 | 3R3 | 50 | 7.9 | 110.0 | 0.07 | 1700 | 3uH3-K |
| 4.7 | 4R7 | 50 | 7.9 | 95.0 | 0.12 | 1300 | 4uH7-K |
| 6.8 | 6R8 | 60 | 7.9 | 85.0 | 0.22 | 1000 | 6uH8-K |
| 10 | 100 | 50 | 7.9 | 65.0 | 0.35 | 750 | 10uH-K |
| 15 | 150 | 55 | 2.5 | 55.0 | 0.60 | 600 | 15uH-K |
| 22 | 220 | 65 | 2.5 | 45.0 | 1.10 | 430 | 22uH-K |
| 33 | 330 | 85 | 2.5 | 35.0 | 2.00 | 300 | 33uH-K |
| 47 | 470 | 70 | 2.5 | 20.0 | 2.50 | 270 | 47uH-K |
| 68 | 680 | 65 | 2.5 | 16.0 | 3.00 | 250 | 68uH-K |
| 100 | 101 | 65 | 2.5 | 14.0 | 4.00 | 220 | mH10-K |
| 150 | 151 | 80 | 0.79 | 9.5 | 5.80 | 230 | mH15-K |
| 220 | 221 | 80 | 0.79 | 8.0 | 7.30 | 200 | mH22-K |
| 330 | 331 | 80 | 0.79 | 7.5 | 12.00 | 160 | mH33-K |
| 470 | 471 | 80 | 0.79 | 6.5 | 20.00 | 120 | mH47-K |
| 680 | 681 | 85 | 0.79 | 5.0 | 24.00 | 110 | mH68-K |
| 1000 | 102 | 85 | 0.79 | 3.0 | 30.00 | 100 | 1mH0-K |

How to Order

| SC30 | 104 | K | T |
|------------------------------|---------------------------------------|------------------|-----------------------------|
| Common Part | Inductance Value | Tolerance | Packaging |
| SC10 SC15 SC30 SC55 | Please state code given in data above | K - 10% | R - Reeled T - Ammo Pack |

TE Connectivity, TE connectivity (logo) and TE (logo) are trademarks.

Other logos, product and Company names mentioned herein may be trademarks of their respective owners.

While TE has made every reasonable effort to ensure the accuracy of the information in this datasheet, TE does not guarantee that it is error-free, nor does TE make any other representation, warranty or guarantee that the information is accurate, correct, reliable or current. TE reserves the right to make any adjustments to the information contained herein at any time without notice. TE expressly disclaims all implied warranties regarding the information contained herein, including, but not limited to, any implied warranties of merchantability or fitness for a particular purpose. The dimensions in this datasheet are for reference purposes only and are subject to change without notice. Specifications are subject to change without notice. Consult TE for the latest dimensions and design specifications.

Компания «Life Electronics» занимается поставками электронных компонентов импортного и отечественного производства от производителей и со складов крупных дистрибьюторов Европы, Америки и Азии.

С конца 2013 года компания активно расширяет линейку поставок компонентов по направлению коаксиальный кабель, кварцевые генераторы и конденсаторы (керамические, пленочные, электролитические), за счёт заключения дистрибьюторских договоров

Мы предлагаем:

- Конкурентоспособные цены и скидки постоянным клиентам.
- Специальные условия для постоянных клиентов.
- Подбор аналогов.
- Поставку компонентов в любых объемах, удовлетворяющих вашим потребностям.
- Приемлемые сроки поставки, возможна ускоренная поставка.
- Доставку товара в любую точку России и стран СНГ.
- Комплексную поставку.
- Работу по проектам и поставку образцов.
- Формирование склада под заказчика.
- Сертификаты соответствия на поставляемую продукцию (по желанию клиента).
- Тестирование поставляемой продукции.
- Поставку компонентов, требующих военную и космическую приемку.
- Входной контроль качества.
- Наличие сертификата ISO.

В составе нашей компании организован Конструкторский отдел, призванный помогать разработчикам, и инженерам.

Конструкторский отдел помогает осуществить:

- Регистрацию проекта у производителя компонентов.
- Техническую поддержку проекта.
- Защиту от снятия компонента с производства.
- Оценку стоимости проекта по компонентам.
- Изготовление тестовой платы монтаж и пусконаладочные работы.



Тел: +7 (812) 336 43 04 (многоканальный)

Email: org@lifeelectronics.ru