

RFID Kits Introduction

Atmel® offers several design and evaluation kits for a fast and easy way to test the LF-RFID technology but also developing the final product. The most important one is the Atmel ATA2270-EK3. It provides a complete self-contained tool to begin using RFID systems, even for users who are short on RFID experience. It supplies an LCD and control buttons to enable interaction with the RFID system. This stand-alone but also PC-GUI based system supports many of Atmel's RFID tag chips.

The second group of kits is based on two readers supplied by an external company. One of them is working at 125kHz (Atmel ATARFID-EK1) the other one at 134.2kHz (Atmel ATARFID-EK2) targeting access control applications and animal ID applications.

Third kit is the Atmel ATA6286-EK3. The evaluation kit for Atmel's active RFID solution. This works at 2 frequency bands: 125kHz and 433MHz.

1. Atmel ATA2270-EK3 and Atmel ATA2270-U3

The Atmel® ATA2270-EK3 is an evaluation kit that supports a limited number of configurations in stand-alone mode. Support during the entire development phase is provided by the PC interface and the application software. Both tools enable full control of the tag configuration. This kit is AVR® ATmega128-based and provides all necessary source and object codes. An API (Advanced Programming Interface) allows control of the kit by user-written software. Registered kit users have access to an Atmel FTP server for firmware and software upgrades and also layout data in Gerber format with BOMs. For users having the predecessor kit ATA2270-EK2 the new reader daughter board (see [Figure 1-3 on page 3](#)) in the Atmel ATA2270-EK3 kit is available separately. The kit part number is ATA2270-U3

Figure 1-1. Atmel ATA2270-EK3 Content



Figure 1-2. Atmel ATA2270-EK3 Main Board



Figure 1-3. Atmel ATA2270-EK3 Reader Daughter Board

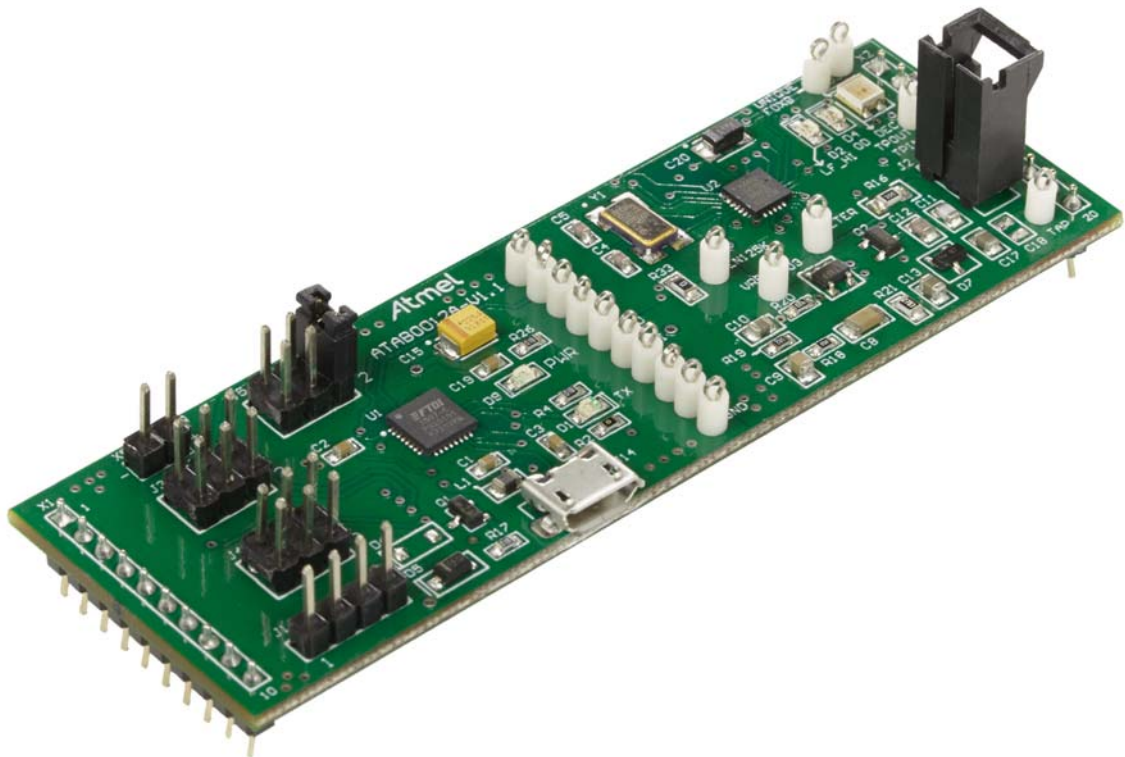


Figure 1-4. LCD Display with Unique Format Read Selection in Stand-alone Mode

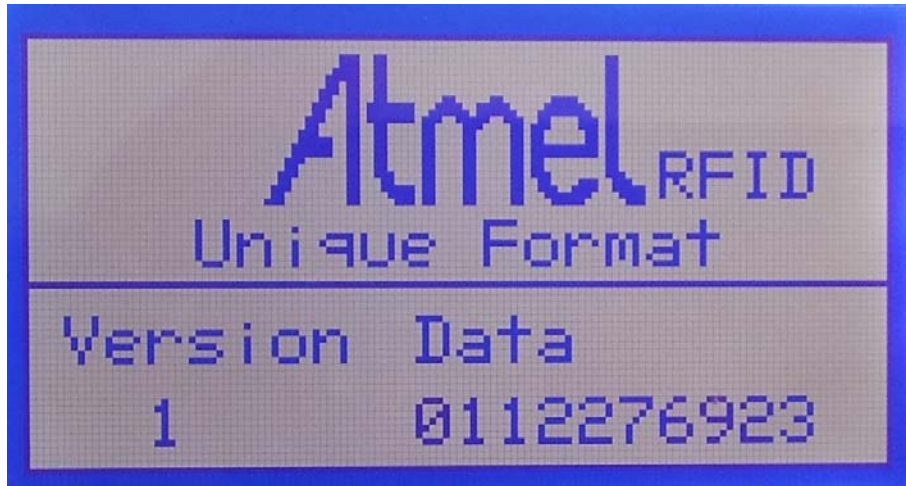


Figure 1-5. LCD Display with Unique Format Write Selection in Stand-alone Mode

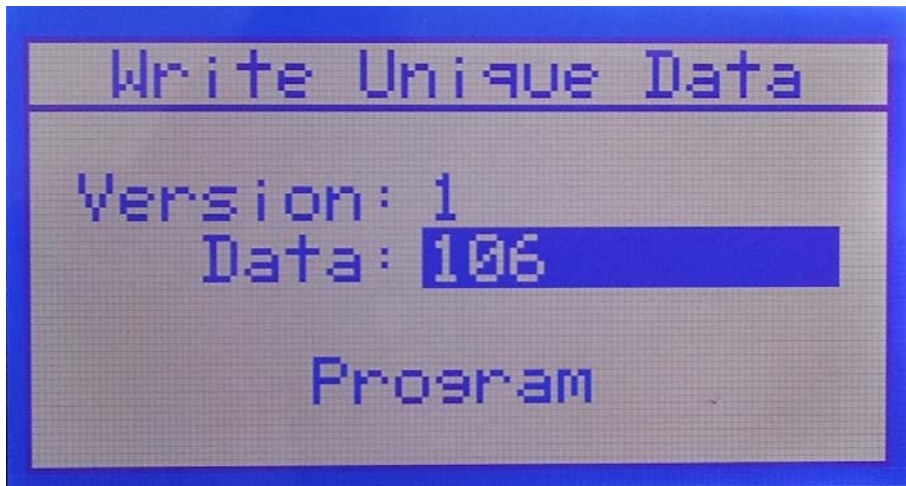


Figure 1-6. LCD Display with Animal ID Read Selection in Stand-alone Mode



Figure 1-7. LCD Display with Animal ID Write Selection in Stand-alone Mode

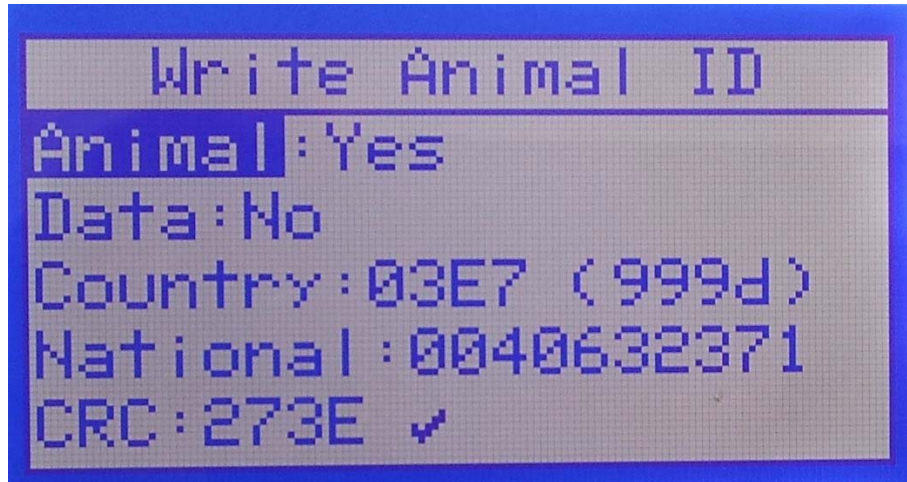


Figure 1-8. Atmel ATA2270-EK Graphical User Interface, Example for Atmel ATA5577

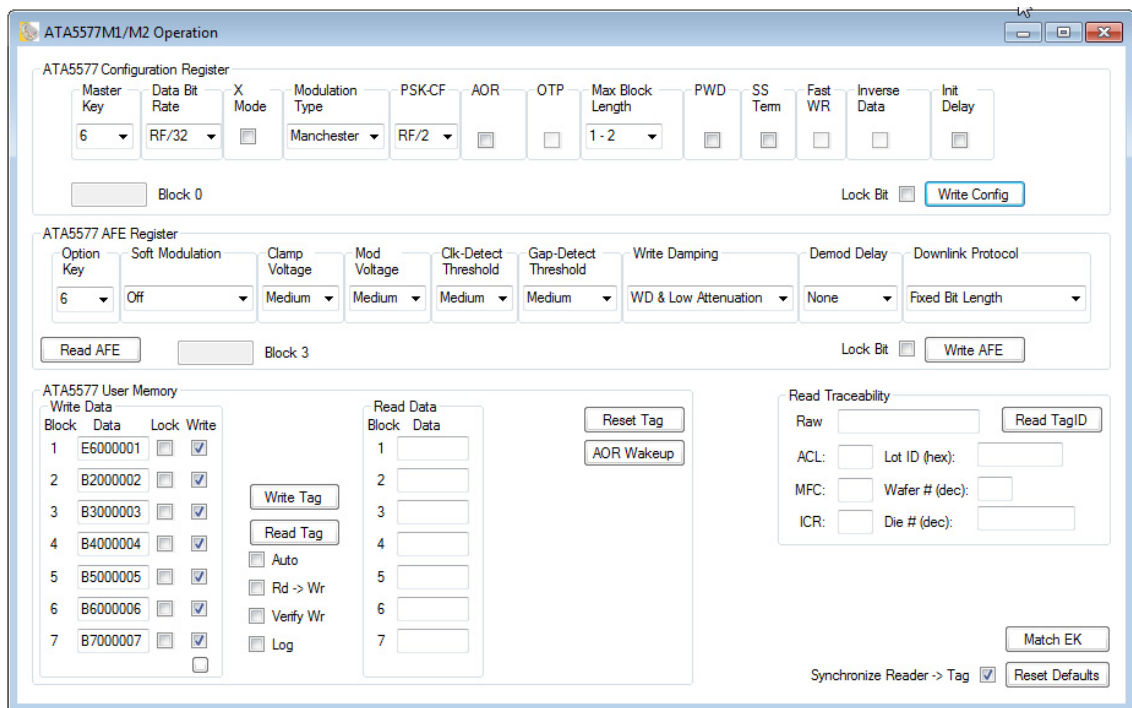


Figure 1-9. Atmel ATA2270-EK Graphical User Interface, Unique-ID Specific

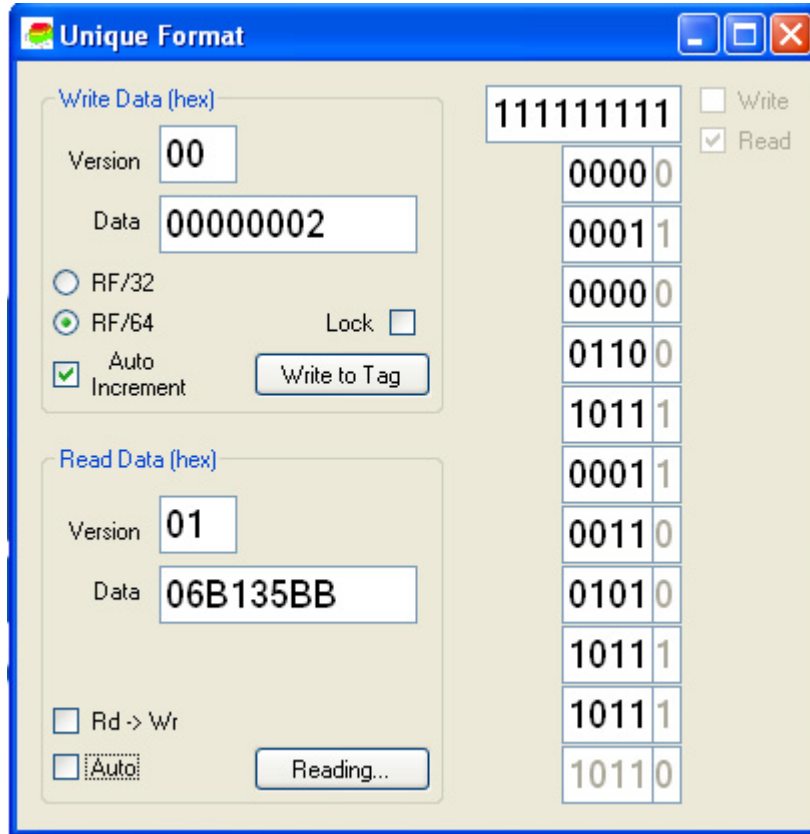
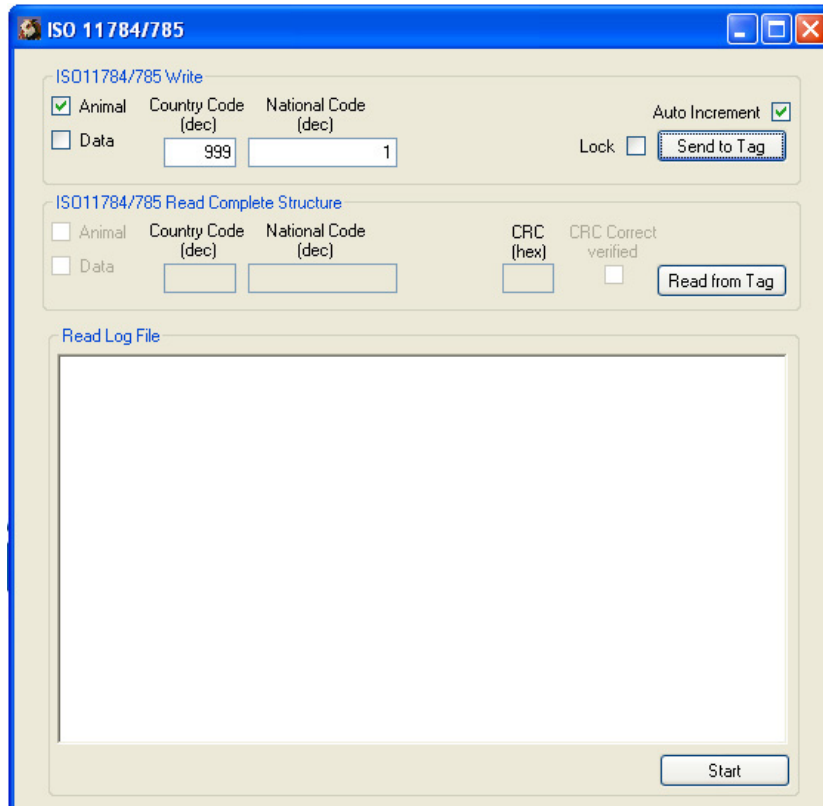


Figure 1-10. Atmel ATA2270-EK Graphical User Interface, Animal ID Application Specific



2. Atmel ATARFID-EK1 and Atmel ATARFID-EK2

The Atmel® kits ATARFID-EK1 and ATARFID-EK2 are based on a commercial reader/programmer supplied by the company GIS. The first version in the EK1 kit operates at 125kHz. It is best suited for access control, industrial, and any kind of consumer applications. This kit supports the very common Manchester and Biphase data coding but also FSK data coding. The EK2 kit operates at 134.2kHz according to the animal ID standards ISO 11784 and 11785 (FDX-A and FDX-B). Both kits allow the user to not only read the tags but also configure and program them. The readers have a USB connection and a PC-based user interface. Sample tags complete this kit. The PC software can be downloaded from the GIS website.

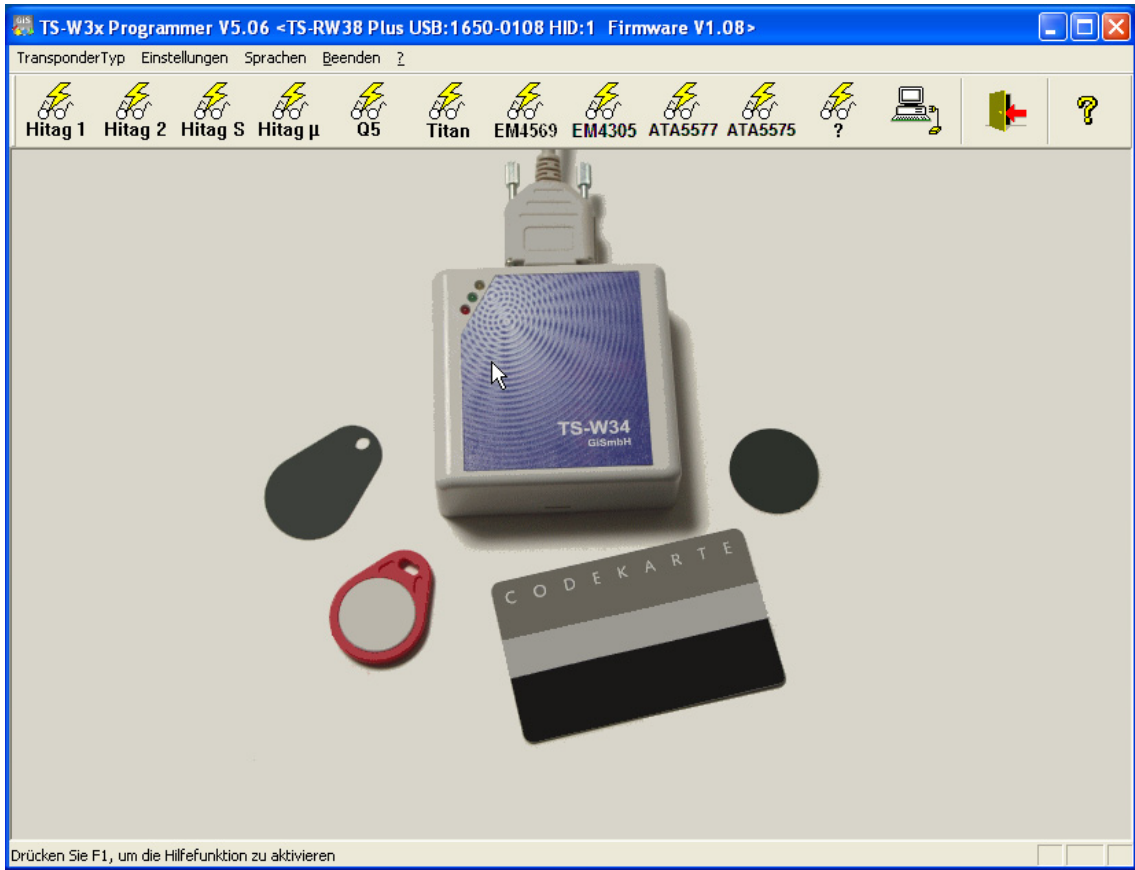
Figure 2-1. Content of the Atmel ATARFID-EK1: 125kHz Kit



Figure 2-2. Content of the Atmel ATARFID-EK2: 134.2kHz Kit



Figure 2-3. GIS PC Software: Atmel ATARFID-EK1 and EK2 Main Menu



3. Active RFID Kit ATA6286-EK3

The Atmel® ATA6286-EK3 is a complete system evaluation kit for active RFID applications. Typically these are identification applications where a larger operating distance and/or a higher amount of data storage space is required compared to passive RFID solutions. The difference to a passive RFID system is that the tag ASSP is supplied by a battery in the tag. Also, the ASSP is not state-machine-based but uses an Atmel AVR® MCU core. Atmel's active RFID system uses a unique combination of two different frequency bands: low frequency at 125kHz for the trigger and activation channel as well as for the data downlink path, and ultra-high frequency at 434MHz for the return and uplink path.

Figure 3-1. Content of the Atmel ATA6286-EK3 Kit



Figure 3-2. Atmel ATA6286-EK3 Active Tag Front

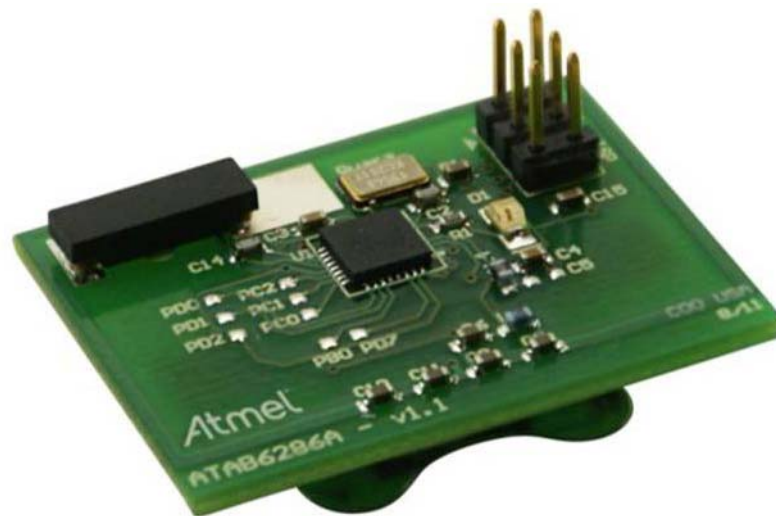


Figure 3-3. Atmel ATA6286-EK3 Active Tag Back



Figure 3-4. Atmel ATA6286-EK3 Main Board



Figure 3-5. Atmel ATA6286-EK3 Trigger and Transmit Board



Figure 3-6. Atmel ATA6286-EK3 Receiver Board



4. RFID Kits Overview

4.1 General Features

General	ATA2270-EK3	ATARFID-EK1	ATARFID-EK2	ATA6286-EK3
Evaluation kit	x	x	x	x
Commercial third-party device		x	x	
PC-controlled	x	x	x	
Stand-alone	x ⁽¹⁾⁽²⁾			x
PC software	x	x	x	
Layout data and source code	x			
Serial interface (with USB converter option)	x			
USB interface	x ⁽³⁾	x	x	x
Field frequency	125kHz/134.2kHz ⁽⁴⁾	125kHz	134.2kHz	125kHz + 434MHz
Data coding	Manchester/Biphase	Manchester/ Biphase/ FSK	Manchester/ Biphase/ FSK	Manchester
LCD display	x			x
LED indicator	x			
Keys and joystick	x			x
Buzzer	x			x

- Notes:
1. One fixed mode
 2. Continuously checks for 125kHz unique tags or 134.2kHz animal tags and indicates them with an LED signal when main board is switched off
 3. For status information of the reader board
 4. Exact reader frequencies are 125kHz and 133.3kHz

4.2 Kit Contents

Kit Contents	ATA2270-EK3	ATARFID-EK1	ATARFID-EK2	ATA6286-EK3
Main and interface board	x			2x
Reader antenna coil	x			
Compact reader		x	x	
Power supply 120V to 240V	x			2x
USB serial converter	x			
USB cable	x	x	x	
TX antenna coil				2x
Active tags				2x
Serial cable				x
RX antenna UHF				x

4.3 Supported RFID ASSP Devices

Supported RFID ASSP Devices	ATA2270-EK3	ATARFID-EK1	ATARFID-EK2	ATA6286-EK3
Atmel T5551/TK5551	x			
Atmel e5530/TK5530	x			
Atmel T5554	x ⁽¹⁾			
Atmel T5555 – “Q5”		x	x	
ATA5558	x			
Atmel T5557 compatible	x ⁽²⁾			
Atmel T5557 extended	x			
Atmel ATA5567 compatible	x ⁽²⁾			
Atmel ATA5567 extended	x			
Atmel ATA5570	x			
Atmel ATA5577	x	x	x	
Atmel ATA5575M1 and ATA5575M2	x	x (M1)	x (M2)	
Atmel ATA6286				x ⁽³⁾

- Notes:
1. To use the Atmel T5554 select tag type T5551 in the software.
 2. This mode is only supported in the PC application software. All tag modes are programmable in this tool.
 3. LF-Trigger IC Atmel ATA5279, UHF receiver IC Atmel ATA8202.

5. Revision History

Please note that the page numbers referred to in the following section refer to the specific revision mentioned, not to this document.

Revision No.	History
4980H-RFID-11/15	<ul style="list-style-type: none">• Update for new kit ATA2270-EK3
4980G-RFID-02/15	<ul style="list-style-type: none">• Put document in the latest template
4980F-RFID-06/13	<ul style="list-style-type: none">• Complete document update
4980E-RFID-06/12	<ul style="list-style-type: none">• Complete document update
4980D-RFID-03/11	<ul style="list-style-type: none">• Section 1 "Description" on page 1 changed• Section 2 "LF-RFID Kit Comparison Chart - Table" on pages 2 to 3 changed
4980C-RFID-11/09	<ul style="list-style-type: none">• Section 1 "Description" on page 1 changed• Section 2 "LF-RFID Kit Comparison Chart - Table" on pages 2 to 3 changed
4980B-RFID-12/08	<ul style="list-style-type: none">• Section 1 "Description" on page 1 changed• Section 2 "LF-RFID Kit Comparison Chart - Table" on pages 2 to 3 changed



Atmel Corporation 1600 Technology Drive, San Jose, CA 95110 USA T: (+1)(408) 441.0311 F: (+1)(408) 436.4200 | www.atmel.com

© 2015 Atmel Corporation. / Rev.: 4980H–RFID–11/15

Atmel®, Atmel logo and combinations thereof, Enabling Unlimited Possibilities®, AVR®, and others are registered trademarks or trademarks of Atmel Corporation in U.S. and other countries. Other terms and product names may be trademarks of others.

DISCLAIMER: The information in this document is provided in connection with Atmel products. No license, express or implied, by estoppel or otherwise, to any intellectual property right is granted by this document or in connection with the sale of Atmel products. EXCEPT AS SET FORTH IN THE ATMEL TERMS AND CONDITIONS OF SALES LOCATED ON THE ATMEL WEBSITE, ATMEL ASSUMES NO LIABILITY WHATSOEVER AND DISCLAIMS ANY EXPRESS, IMPLIED OR STATUTORY WARRANTY RELATING TO ITS PRODUCTS INCLUDING, BUT NOT LIMITED TO, THE IMPLIED WARRANTY OF MERCHANTABILITY, FITNESS FOR A PARTICULAR PURPOSE, OR NON-INFRINGEMENT. IN NO EVENT SHALL ATMEL BE LIABLE FOR ANY DIRECT, INDIRECT, CONSEQUENTIAL, PUNITIVE, SPECIAL OR INCIDENTAL DAMAGES (INCLUDING, WITHOUT LIMITATION, DAMAGES FOR LOSS AND PROFITS, BUSINESS INTERRUPTION, OR LOSS OF INFORMATION) ARISING OUT OF THE USE OR INABILITY TO USE THIS DOCUMENT, EVEN IF ATMEL HAS BEEN ADVISED OF THE POSSIBILITY OF SUCH DAMAGES. Atmel makes no representations or warranties with respect to the accuracy or completeness of the contents of this document and reserves the right to make changes to specifications and products descriptions at any time without notice. Atmel does not make any commitment to update the information contained herein. Unless specifically provided otherwise, Atmel products are not suitable for, and shall not be used in, automotive applications. Atmel products are not intended, authorized, or warranted for use as components in applications intended to support or sustain life.

SAFETY-CRITICAL, MILITARY, AND AUTOMOTIVE APPLICATIONS DISCLAIMER: Atmel products are not designed for and will not be used in connection with any applications where the failure of such products would reasonably be expected to result in significant personal injury or death ("Safety-Critical Applications") without an Atmel officer's specific written consent. Safety-Critical Applications include, without limitation, life support devices and systems, equipment or systems for the operation of nuclear facilities and weapons systems. Atmel products are not designed nor intended for use in military or aerospace applications or environments unless specifically designated by Atmel as military-grade. Atmel products are not designed nor intended for use in automotive applications unless specifically designated by Atmel as automotive-grade.

Mouser Electronics

Authorized Distributor

Click to View Pricing, Inventory, Delivery & Lifecycle Information:

[Microchip:](#)

[ATA2270-EK3](#)

Компания «Life Electronics» занимается поставками электронных компонентов импортного и отечественного производства от производителей и со складов крупных дистрибьюторов Европы, Америки и Азии.

С конца 2013 года компания активно расширяет линейку поставок компонентов по направлению коаксиальный кабель, кварцевые генераторы и конденсаторы (керамические, пленочные, электролитические), за счёт заключения дистрибьюторских договоров

Мы предлагаем:

- Конкурентоспособные цены и скидки постоянным клиентам.
- Специальные условия для постоянных клиентов.
- Подбор аналогов.
- Поставку компонентов в любых объемах, удовлетворяющих вашим потребностям.
- Приемлемые сроки поставки, возможна ускоренная поставка.
- Доставку товара в любую точку России и стран СНГ.
- Комплексную поставку.
- Работу по проектам и поставку образцов.
- Формирование склада под заказчика.
- Сертификаты соответствия на поставляемую продукцию (по желанию клиента).
- Тестирование поставляемой продукции.
- Поставку компонентов, требующих военную и космическую приемку.
- Входной контроль качества.
- Наличие сертификата ISO.

В составе нашей компании организован Конструкторский отдел, призванный помогать разработчикам, и инженерам.

Конструкторский отдел помогает осуществить:

- Регистрацию проекта у производителя компонентов.
- Техническую поддержку проекта.
- Защиту от снятия компонента с производства.
- Оценку стоимости проекта по компонентам.
- Изготовление тестовой платы монтаж и пусконаладочные работы.



Тел: +7 (812) 336 43 04 (многоканальный)
Email: org@lifeelectronics.ru