

**Variable Transformers  
Series 6000 • 35.0 to 315.0 Amperes**



# 5000/6000 Series



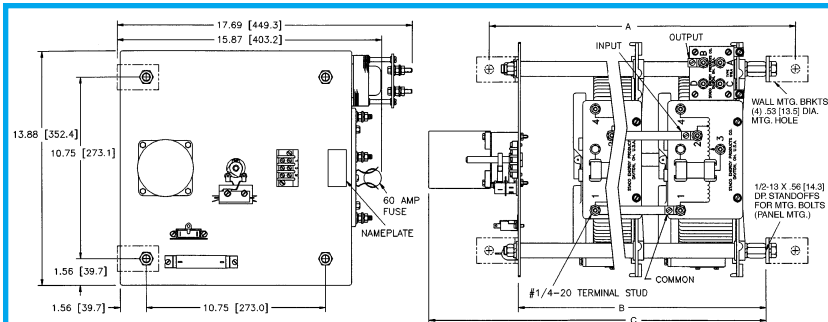
**Manual Single, Uncased**



**Manual Single, Cased**



**Manual Two-Ganged, Cased**



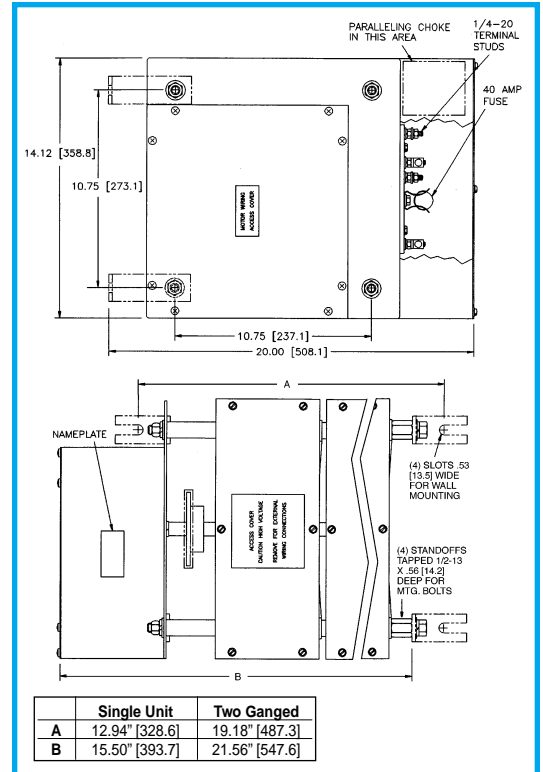
|                      | Single Unit    | Two Ganged     | Three Ganged   |
|----------------------|----------------|----------------|----------------|
| A                    | 13.25" [336.6] | 19.32" [490.7] | 25.38" [644.5] |
| B                    | 9.75" [247.7]  | 15.82" [401.8] | 21.88" [555.7] |
| C (5 sec.)           | 13.53" [343.7] | 19.62" [498.5] | 25.75" [654.0] |
| C (15, 30 & 60 sec.) | 15.12" [384.2] | 21.19" [538.2] | 27.25" [692.0] |

**Motor Driven, Single, Two and Three-Ganged, Uncased**



**Manual Two and Three-Ganged, Uncased**

|   | Two Ganged     | Three Ganged   |
|---|----------------|----------------|
| A | 17.06" [433.3] | 23.12" [587.4] |
| B | 13.56" [344.4] | 19.62" [498.3] |
| C | 15.12" [384.2] | 21.19" [538.2] |



**Motor Driven, Single and Two-Ganged, Cased**

|   | Single Unit    | Two Ganged     |
|---|----------------|----------------|
| A | 12.94" [328.6] | 19.18" [487.3] |
| B | 15.50" [393.7] | 21.56" [547.6] |

# 5000/6000 Series



Manual Three to Nine-Ganged, Cased



Motor-Driven Three to Nine-Ganged, Cased



Motor-Driven 10, 12, 14, 16 & 18-Ganged Open Delta and Parallel, Cased



Manual Four to Nine-Ganged, Uncased



5021-3Y

# 5000/6000 Series



Motor-Driven 12, 15, 18, 21, 24 & 27-Ganged, Uncased



Motor-Driven 12, 15, 18, 21, 24 & 27-Ganged, Cased



Motor-Driven 10, 12, 14, 16 & 18-Ganged Open Delta & Parallel, Uncased



60M5021-27Y

# 6000 Series

Variable transformers of the 6011/6020 Series are designed for larger KVA requirements. The 6011, 120 volt unit is rated for constant current of 60 amperes. The 6020, 240 volt unit is rated at 35 amperes for constant current loads. All single units have coil tapping arrangements allowing output voltage from 0 to line voltage or 17% above line voltage.

Adjustable shaft design on manually operated models permits back-of-panel or bench mounting. Terminals are 1/4" screw type. For single and two ganged units, case styles are available in either "C" style, which encloses only the coil, or the "CT" style, which provides protective housing for both the coil and terminal board. Knockouts are provided in the terminal board

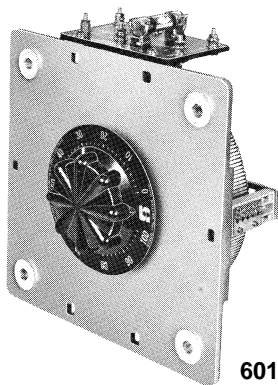
housing to accommodate conduit or cable connections. For three ganged and above, we offer our Nema 1, dripproof, fully front accessible "E" enclosure.

Motor-driven models are available from single thru 27 ganged assemblies; cased or uncased (identified with the prefix "M" in the part number). The synchronous motor is designed for operation on 120 volt, 50/60 Hertz lines and draws approximately 0.3 amperes. To meet a wide range of application requirements, standard motor speeds of 5, 15, 30 and 60 seconds are available depending upon the size of the variable transformer.

| PART NUMBER                      |                                     | WIRING                       | INPUT |       | OUTPUT |          |         | SHAFT ROTATION FOR VOLTAGE INCREASE | TERMINAL CONNECTIONS For Increasing Voltage As Viewed from Rotor End |        | SCHEMATIC (Pg 8 & 9) | NET WEIGHT IN LBS. (MAX) |              |     |     |
|----------------------------------|-------------------------------------|------------------------------|-------|-------|--------|----------|---------|-------------------------------------|--|--------|----------------------|--------------------------|--------------|-----|-----|
| MANUALLY OPERATED                | MOTOR DRIVEN                        |                              | VOLTS | HERTZ | VOLTS  | MAX AMPS | MAX KVA |                                     | INPUT  | OUTPUT |                      | MAN-UAL                  | MOTOR DRIVEN |     |     |
| 6011<br>6011C<br>6011CT          | M6011<br>M6011C<br>M6011CT          | Single Phase                 | 120   | 50/60 | 0-120  | 60       | 7.2     | CW                                  | 2-4  | 2-3    | 19                   | 67                       | 88           |     |     |
|                                  |                                     |                              |       |       |        |          |         | CCW                                 | 4-2  | 4-3    |                      |                          |              |     |     |
|                                  |                                     |                              |       |       | 0-140  | 60       | 8.4     | CW                                  | 2-5  | 2-3    |                      |                          |              |     |     |
|                                  |                                     |                              |       |       |        |          |         | CCW                                 | 4-1  | 4-3    |                      |                          |              |     |     |
| 6020<br>6020C<br>6020CT          | M6020<br>M6020C<br>M6020CT          | Single Phase                 | 240   | 50/60 | 0-240  | 35       | 8.4     | CW                                  | 2-4  | 2-3    | 19                   | 63                       | 84           |     |     |
|                                  |                                     |                              |       |       |        |          |         | CCW                                 | 4-2  | 4-3    |                      |                          |              |     |     |
|                                  |                                     |                              |       |       | 0-280  | 35       | 9.8     | CW                                  | 2-5  | 2-3    |                      |                          |              |     |     |
|                                  |                                     |                              |       |       |        |          |         | CCW                                 | 4-1  | 4-3    |                      |                          |              |     |     |
|                                  |                                     |                              |       |       | 120    | 50/60    | 0-280   | 35*-15<br>V.D.                      | 4.2‡   | CW     |                      |                          |              | 2-6 | 2-3 |
|                                  |                                     |                              |       |       |        |          |         |                                     |  | CCW    |                      |                          |              | 4-7 | 4-3 |
| 6011-2D<br>6011C-2D<br>6011CT-2D | M6011-2D<br>M6011C-2D<br>M6011CT-2D | Three Phase<br>Open<br>Delta | 120   | 50/60 | 0-120  | 60       | 12.5    | CW                                  | 4-1-4  | 3-1-3  | 20 & 5               | 154                      | 175          |     |     |
|                                  |                                     |                              |       |       | 0-140  | 60       | 14.5    | CW                                  | 2-1-2  | 3-1-3  |                      |                          |              |     |     |
| 6011-2P<br>6011C-2P<br>6011CT-2P | M6011-2P<br>M6011C-2P<br>M6011CT-2P | Single Phase<br>Parallel     | 120   | 50/60 | 0-120  | 120      | 14.4    | CW                                  | 1-4  | 1-B    | 21                   | 156                      | 177          |     |     |
|                                  |                                     |                              |       |       | 0-140  | 120      | 16.8    | CW                                  | 1-2  | 1-B    |                      |                          |              |     |     |
| 6011-2S<br>6011C-2S<br>6011CT-2S | M6011-2S<br>M6011C-2S<br>M6011CT-2S | Single Phase<br>Series       | 240   | 50/60 | 0-240  | 60       | 14.4    | CW                                  | 4-4  | 3-3    | 20 & 4               | 154                      | 175          |     |     |
|                                  |                                     |                              |       |       | 0-280  | 60       | 16.8    | CW                                  | 2-2  | 3-3    |                      |                          |              |     |     |
| 6020-2D<br>6020C-2D<br>6020CT-2D | M6020-2D<br>M6020C-2D<br>M6020CT-2D | Three Phase<br>Open<br>Delta | 240   | 50/60 | 0-240  | 35       | 14.5    | CW                                  | 4-1-4  | 3-1-3  | 20 & 5               | 146                      | 167          |     |     |
|                                  |                                     |                              |       |       | 0-280  | 35       | 16.9    | CW                                  | 2-1-2  | 3-1-3  |                      |                          |              |     |     |
| 6020-2P<br>6020C-2P<br>6020CT-2P | M6020-2P<br>M6020C-2P<br>M6020CT-2P | Single Phase<br>Parallel     | 240   | 50/60 | 0-240  | 70       | 16.8    | CW                                  | 1-4  | 1-B    | 21                   | 148                      | 169          |     |     |
|                                  |                                     |                              |       |       | 0-280  | 70       | 19.6    | CW                                  | 1-2  | 1-B    |                      |                          |              |     |     |
| 6020-2S<br>6020C-2S<br>6020CT-2S | M6020-2S<br>M6020C-2S<br>M6020CT-2S | Single Phase<br>Series       | 480   | 50/60 | 0-480  | 35       | 16.8    | CW                                  | 4-4  | 3-3    | 20 & 4               | 146                      | 167          |     |     |
|                                  |                                     |                              |       |       | 0-560  | 35       | 19.6    | CW                                  | 2-2  | 3-3    |                      |                          |              |     |     |
| 6011-3P<br>6011E-3P              | M6011-3P<br>M6011E-3P               | Single Phase<br>Parallel     | 120   | 50/60 | 0-120  | 180      | 21.6    | CW                                  | 1-4  | 1-D    | 22                   | 246                      | 267          |     |     |
|                                  |                                     |                              |       |       | 0-140  | 180      | 25.2    | CW                                  | 1-2  | 1-D    |                      |                          |              |     |     |
| 6011-3Y<br>6011E-3Y              | M6011-3Y<br>M6011E-3Y               | Three Phase<br>Wye           | 240   | 60    | 0-240  | 60       | 24.9    | CW                                  | 4-4-4  | 3-3-3  | 20 & 6               | 242                      | 263          |     |     |
|                                  |                                     |                              |       |       | 0-280  | 60       | 29.1    | CW                                  | 2-2-2  | 3-3-3  |                      |                          |              |     |     |



6011



6011



6020

# 6000 Series



| PART NUMBER           |                         | WIRING                       | INPUT |       | OUTPUT |          |         | SHAFT ROTATION FOR VOLTAGE INCREASE | TERMINAL CONNECTIONS For Increasing Voltage As Viewed from Rotor End |        | SCHEMATIC (Pg 8 & 9) | NET WEIGHT IN LBS. (MAX) |              |
|-----------------------|-------------------------|------------------------------|-------|-------|--------|----------|---------|-------------------------------------|--|--------|----------------------|--------------------------|--------------|
| MANUALLY OPERATED     | MOTOR DRIVEN            |                              | VOLTS | HERTZ | VOLTS  | MAX AMPS | MAX KVA |                                     | INPUT  | OUTPUT |                      | MANUAL                   | MOTOR DRIVEN |
| 6020-3P<br>6020E-3P   | M6020-3P<br>M6020E-3P   | Single Phase Parallel        | 240   | 50/60 | 0-240  | 105      | 25.2    | CW                                  | 1-4  | 1-D    | 22                   | 246                      | 267          |
|                       |                         |                              | 120   | 50/60 | 0-280  | 105      | 29.4    | CW                                  | 1-2  | 1-D    |                      |                          |              |
| 6020-3Y<br>6020E-3Y   | M6020-3Y<br>M6020E-3Y   | Three Phase Wye              | 480   | 50/60 | 0-480  | 35       | 29.1    | CW                                  | 4-4-4  | 3-3-3  | 20 & 6               | 240                      | 261          |
|                       |                         |                              | 240   | 60    | 0-560  | 35       | 33.9    | CW                                  | 2-2-2  | 3-3-3  |                      |                          |              |
| 6011-4D<br>6011E-4D   | M6011-4D<br>M6011E-4D   | Three Phase Open Delta       | 120   | 50/60 | 0-120  | 120      | 24.9    | CW                                  | 4-1-4  | B-1-B  | 21 & 5               | 354                      | 375          |
|                       |                         |                              | 120   | 50/60 | 0-140  | 120      | 29.1    | CW                                  | 2-1-2  | B-1-B  |                      |                          |              |
| 6011-4P<br>6011E-4P   | M6011-4P<br>M6011E-4P   | Single Phase Parallel        | 120   | 50/60 | 0-120  | 240      | 28.8    | CW                                  | 1-4  | 1-D    | 22                   | 356                      | 377          |
|                       |                         |                              | 120   | 50/60 | 0-140  | 240      | 33.6    | CW                                  | 1-2  | 1-D    |                      |                          |              |
| 6011-4PS<br>6011E-4PS | M6011-4PS<br>M6011E-4PS | Single Phase Series Parallel | 240   | 50/60 | 0-240  | 120      | 28.8    | CW                                  | 4-4  | B-B    | 21 & 4               | 354                      | 375          |
|                       |                         |                              | 240   | 50/60 | 0-280  | 120      | 33.6    | CW                                  | 2-2  | B-B    |                      |                          |              |
| 6020-4D<br>6020E-4D   | M6020-4D<br>M6020E-4D   | Three Phase Open Delta       | 240   | 50/60 | 0-240  | 70       | 29.1    | CW                                  | 4-1-4  | B-1-B  | 21 & 5               | 338                      | 359          |
|                       |                         |                              | 120   | 50/60 | 0-280  | 70       | 33.9    | CW                                  | 2-1-2  | B-1-B  |                      |                          |              |
| 6020-4P<br>6020E-4P   | M6020-4P<br>M6020E-4P   | Single Phase Parallel        | 240   | 50/60 | 0-240  | 140      | 33.6    | CW                                  | 1-4  | 1-D    | 22                   | 340                      | 361          |
|                       |                         |                              | 120   | 50/60 | 0-280  | 140      | 39.2    | CW                                  | 1-2  | 1-D    |                      |                          |              |
| 6020-4PS<br>6020E-4PS | M6020-4PS<br>M6020E-4PS | Single Phase Series Parallel | 480   | 50/60 | 0-480  | 70       | 33.6    | CW                                  | 4-4  | B-B    | 21 & 4               | 338                      | 359          |
|                       |                         |                              | 240   | 50/60 | 0-560  | 70       | 39.2    | CW                                  | 2-2  | B-B    |                      |                          |              |
| 6011-5P<br>6011E-5P   | M6011-5P<br>M6011E-5P   | Single Phase Parallel        | 120   | 50/60 | 0-120  | 300      | 36.0    | CW                                  | 1-4  | 1-D    | 22                   | 450                      | 471          |
|                       |                         |                              | 120   | 50/60 | 0-140  | 300      | 42.0    | CW                                  | 1-2  | 1-D    |                      |                          |              |
| 6020-5P<br>6020E-5P   | M6020-5P<br>M6020E-5P   | Single Phase Parallel        | 240   | 50/60 | 0-240  | 175      | 42.0    | CW                                  | 1-4  | 1-D    | 22                   | 430                      | 451          |
|                       |                         |                              | 120   | 50/60 | 0-280  | 175      | 49.0    | CW                                  | 1-2  | 1-D    |                      |                          |              |
| 6011-6D<br>6011E-6D   | M6011-6D<br>M6011E-6D   | Three Phase Open Delta       | 120   | 50/60 | 0-120  | 180      | 37.4    | CW                                  | 4-1-4  | D-1-D  | 22 & 5               | 541                      | 562          |
|                       |                         |                              | 120   | 50/60 | 0-140  | 180      | 43.6    | CW                                  | 2-1-2  | D-1-D  |                      |                          |              |
| 6011-6P<br>6011E-6P   | M6011-6P<br>M6011E-6P   | Single Phase Parallel        | 120   | 50/60 | 0-120  | 360      | 43.2    | CW                                  | 1-4  | 1-D    | 22                   | 543                      | 564          |
|                       |                         |                              | 120   | 50/60 | 0-140  | 360      | 50.4    | CW                                  | 1-2  | 1-D    |                      |                          |              |
| 6011-6PS<br>6011E-6PS | M6011-6PS<br>M6011E-6PS | Single Phase Series Parallel | 240   | 50/60 | 0-240  | 180      | 43.2    | CW                                  | 4-4  | D-D    | 22 & 4               | 541                      | 562          |
|                       |                         |                              | 240   | 50/60 | 0-280  | 180      | 50.4    | CW                                  | 2-2  | D-D    |                      |                          |              |
| 6011-6Y<br>6011E-6Y   | M6011-6Y<br>M6011E-6Y   | Three Phase Wye              | 240   | 60    | 0-240  | 120      | 49.8    | CW                                  | 4-4-4  | B-B-B  | 21 & 6               | 539                      | 560          |
|                       |                         |                              | 240   | 60    | 0-280  | 120      | 58.1    | CW                                  | 2-2-2  | B-B-B  |                      |                          |              |

# 6000 Series

| PART NUMBER           |                           | WIRING                             | INPUT |       | OUTPUT |                |         | SHAFT ROTATION FOR VOLTAGE INCREASE | TERMINAL CONNECTIONS<br>For Increasing Voltage<br>As Viewed from Rotor End |        | SCHEMATIC<br>(Pg 8 & 9) | NET WEIGHT<br>IN LBS.<br>(MAX) |              |
|-----------------------|---------------------------|------------------------------------|-------|-------|--------|----------------|---------|-------------------------------------|--|--------|-------------------------|--------------------------------|--------------|
| MANUALLY OPERATED     | MOTOR DRIVEN              |                                    | VOLTS | HERTZ | VOLTS  | MAX AMPS       | MAX KVA |                                     | INPUT  | OUTPUT |                         | MANUAL                         | MOTOR DRIVEN |
| 6020-6D<br>6020E-6D   | M6020-6D<br>M6020E-6D     | Three Phase<br>Open<br>Delta       | 240   | 50/60 | 0-240  | 105            | 43.6    | CW                                  | 4-1-4  | D-1-D  | 22 & 5                  | 517                            | 538          |
|                       |                           |                                    |       |       | 0-280  | 105            | 50.9    | CW                                  | 2-1-2  | D-1-D  |                         |                                |              |
| 6020-6P<br>6020E-6P   | M6020-6P<br>M6020E-6P     | Single Phase<br>Parallel           | 240   | 50/60 | 0-240  | 210            | 50.4    | CW                                  | 1-4  | 1-D    | 22                      | 489                            | 510          |
|                       |                           |                                    |       |       | 0-280  | 210            | 58.8    | CW                                  | 1-2  | 1-D    |                         |                                |              |
| 6020-6PS<br>6020E-6PS | M6020-6PS<br>M6020E-6PS   | Single Phase<br>Series<br>Parallel | 240   | 50/60 | 0-240  | 105            | 50.4    | CW                                  | 4-4  | D-D    | 22 & 4                  | 487                            | 508          |
|                       |                           |                                    |       |       | 0-560  | 105            | 58.8    | CW                                  | 2-2  | D-D    |                         |                                |              |
| 6020-6Y<br>6020E-6Y   | M6020-6Y<br>M6020E-6Y     | Three Phase<br>Wye                 | 480   | 50/60 | 0-480  | 70             | 58.1    | CW                                  | 4-4-4  | B-B-B  | 21 & 6                  | 485                            | 506          |
|                       |                           |                                    |       | 60    | 0-560  | 70             | 67.8    | CW                                  | 2-2-2  | B-B-B  |                         |                                |              |
| 6011-7P<br>6011E-7P   | M6011-7P<br>M6011E-7P     | Single Phase<br>Parallel           | 120   | 50/60 | 0-120  | 420            | 50.4    | CW                                  | 1-4  | 1-D    | 22                      | 633                            | 654          |
|                       |                           |                                    |       |       | 0-140  | 420            | 58.8    | CW                                  | 1-2  | 1-D    |                         |                                |              |
| 6020-7P<br>6020E-7P   | M6020-7P<br>M6020E-7P     | Single Phase<br>Parallel           | 240   | 50/60 | 0-240  | 245            | 58.8    | CW                                  | 1-4  | 1-D    | 22                      | 598                            | 619          |
|                       |                           |                                    |       |       | 0-280  | 245            | 68.6    | CW                                  | 1-2  | 1-D    |                         |                                |              |
| 6011-8D<br>6011E-8D   | M6011-8D<br>M6011E-8D     | Three Phase<br>Open<br>Delta       | 120   | 50/60 | 0-120  | 240            | 49.8    | CW                                  | 4-1-4  | D-1-D  | 22 & 5                  | 720                            | 741          |
|                       |                           |                                    |       |       | 0-140  | 240            | 58.1    | CW                                  | 2-1-2  | D-1-D  |                         |                                |              |
| 6011-8P<br>6011E-8P   | M6011-8P<br>M6011E-8P     | Single Phase<br>Parallel           | 120   | 50/60 | 0-120  | 480            | 57.6    | CW                                  | 1-4  | 1-D    | 22                      | 722                            | 743          |
|                       |                           |                                    |       |       | 0-140  | 480            | 67.2    | CW                                  | 1-2  | 1-D    |                         |                                |              |
| 6011-8PS<br>6011E-8PS | M6011-8PS<br>M6011E-8PS   | Single Phase<br>Series<br>Parallel | 240   | 50/60 | 0-240  | 240            | 57.6    | CW                                  | 4-4  | D-D    | 22 & 4                  | 720                            | 741          |
|                       |                           |                                    |       |       | 0-280  | 240            | 67.2    | CW                                  | 2-2  | D-D    |                         |                                |              |
| 6020-8D<br>6020E-8D   | M6020-8D<br>M6020E-8D     | Three Phase<br>Open<br>Delta       | 240   | 50/60 | 0-240  | 140            | 58.1    | CW                                  | 4-1-4  | D-1-D  | 22 & 5                  | 688                            | 709          |
|                       |                           |                                    |       |       | 0-280  | 140            | 67.8    | CW                                  | 2-1-2  | D-1-D  |                         |                                |              |
| 6020-8P<br>6020E-8P   | M6020-8P<br>M6020E-8P     | Single Phase<br>Parallel           | 240   | 50/60 | 0-240  | 280            | 67.2    | CW                                  | 1-4  | 1-D    | 22                      | 690                            | 711          |
|                       |                           |                                    |       |       | 0-280  | 280            | 78.4    | CW                                  | 1-2  | 1-D    |                         |                                |              |
| 6020-8PS<br>6020E-8PS | M6020-8PS<br>M6020E-8PS   | Single Phase<br>Series<br>Parallel | 480   | 50/60 | 0-480  | 140            | 67.2    | CW                                  | 4-4  | D-D    | 22 & 4                  | 688                            | 709          |
|                       |                           |                                    |       |       | 0-560  | 140            | 78.4    | CW                                  | 2-2  | D-D    |                         |                                |              |
| 6011-9P<br>6011E-9P   | M6011-9P<br>M6011E-9P     | Single Phase<br>Parallel           | 120   | 50/60 | 0-120  | 540            | 64.8    | CW                                  | 1-4  | 1-D    | 22                      | 811                            | 832          |
|                       |                           |                                    |       |       | 0-140  | 540            | 75.6    | CW                                  | 1-2  | 1-D    |                         |                                |              |
| 6011-9Y<br>6011E-9Y   | M6011-9Y<br>M6011E-9Y     | Three Phase<br>Wye                 | 240   | 60    | 0-240  | 180            | 74.7    | CW                                  | 4-4-4  | D-D-D  | 22 & 6                  | 807                            | 828          |
|                       |                           |                                    |       |       | 0-280  | 180            | 87.2    | CW                                  | 2-2-2  | D-D-D  |                         |                                |              |
| 6020-9P<br>6020E-9P   | M6020-9P<br>M6020E-9P     | Single Phase<br>Parallel           | 240   | 50/60 | 0-240  | 315            | 75.6    | CW                                  | 1-4  | 1-D    | 22                      | 775                            | 796          |
|                       |                           |                                    |       |       | 0-280  | 315            | 88.2    | CW                                  | 1-2  | 1-D    |                         |                                |              |
| 6020-9Y<br>6020E-9Y   | M6020-9Y<br>M6020E-9Y     | Three Phase<br>Wye                 | 480   | 50/60 | 0-480  | 105            | 87.2    | CW                                  | 4-4-4  | D-D-D  | 22 & 6                  | 771                            | 792          |
|                       |                           |                                    |       | 60    | 0-560  | 105            | 101.7   | CW                                  | 2-2-2  | D-D-D  |                         |                                |              |
| —                     | M6011-10D<br>M6011E-10D   | Three Phase<br>Open<br>Delta       | 120   | 50/60 | 0-120  | 300            | 62.3    | CW                                  | 4-1-4  | D-1-D  | 22 & 5                  | —                              | 912          |
|                       |                           |                                    |       |       | 0-140  | 300            | 72.7    | CW                                  | 2-1-2  | D-1-D  |                         |                                |              |
| —                     | M6011-10PS<br>M6011E-10PS | Single Phase<br>Series<br>Parallel | 240   | 50/60 | 0-240  | 300            | 72.0    | CW                                  | 4-4  | D-D    | 22 & 4                  | —                              | 912          |
|                       |                           |                                    |       |       | 0-280  | 300            | 84.0    | CW                                  | 2-2  | D-D    |                         |                                |              |
| —                     | M6020-10D<br>M6020E-10D   | Three Phase<br>Open<br>Delta       | 240   | 50/60 | 0-240  | 175            | 72.7    | CW                                  | 4-1-4  | D-1-D  | 22 & 5                  | —                              | 912          |
|                       |                           |                                    |       |       | 0-280  | 175            | 84.8    | CW                                  | 2-1-2  | D-1-D  |                         |                                |              |
|                       |                           |                                    | 120   | 50/60 | 0-280  | 175*75<br>V.D. | 36.3‡   | CW                                  | 5-1-5  | D-1-D  |                         |                                |              |

# 6000 Series

| PART NUMBER       |                           | WIRING                       | INPUT |       | OUTPUT         |                     |                | SHAFT ROTATION FOR VOLTAGE INCREASE | TERMINAL CONNECTIONS<br>For Increasing Voltage<br>As Viewed from Rotor End |                | SCHEMATIC<br>(Pg 8 & 9) | NET WEIGHT<br>IN LBS.<br>(MAX) |              |
|-------------------|---------------------------|------------------------------|-------|-------|----------------|---------------------|----------------|-------------------------------------|--|----------------|-------------------------|--------------------------------|--------------|
| MANUALLY OPERATED | MOTOR DRIVEN              |                              | VOLTS | HERTZ | VOLTS          | MAX AMPS            | MAX KVA        |                                     | INPUT  | OUTPUT         |                         | MANUAL                         | MOTOR DRIVEN |
| —                 | M6020-10PS<br>M6020E-10PS | Single Phase Series Parallel | 480   | 50/60 | 0-480<br>0-560 | 175<br>175          | 84.0<br>98.0   | CW<br>CW                            | 4-4<br>2-2   | D-D<br>D-D     | 22 & 4                  | —                              | 872          |
|                   |                           |                              | 240   | 50/60 | 0-560          | 175*<br>75<br>V.D.  | 42.0‡          | CW                                  | 5-5  | D-D            |                         |                                |              |
| —                 | M6011-12D<br>M6011E-12D   | Three Phase Open Delta       | 120   | 50/60 | 0-120          | 360                 | 74.7           | CW                                  | 4-1-4  | D-1-D          | 22 & 5                  | —                              | 1060         |
|                   |                           |                              |       |       | 0-140          | 360                 | 87.2           | CW                                  | 2-1-2  | D-1-D          |                         |                                |              |
| —                 | M6011-12PS<br>M6011E-12PS | Single Phase Series Parallel | 240   | 50/60 | 0-240          | 360                 | 86.4           | CW                                  | 4-4  | D-D            | 22 & 4                  | —                              | 1060         |
|                   |                           |                              |       |       | 0-280          | 360                 | 100.8          | CW                                  | 2-2  | D-D            |                         |                                |              |
| —                 | M6020-12D<br>M6020E-12D   | Three Phase Open Delta       | 240   | 50/60 | 0-240<br>0-280 | 210<br>210          | 87.2<br>101.7  | CW<br>CW                            | 4-1-4<br>2-1-2   | D-1-D<br>D-1-D | 22 & 5                  | —                              | 1012         |
|                   |                           |                              | 120   | 50/60 | 0-280          | 210*<br>90<br>V.D.  | 43.6‡          | CW                                  | 5-1-5  | D-1-D          |                         |                                |              |
| —                 | M6020-12PS<br>M6020E-12PS | Single Phase Series Parallel | 480   | 50/60 | 0-480<br>0-560 | 210<br>210          | 100.8<br>117.6 | CW<br>CW                            | 4-4<br>2-2   | D-D<br>D-D     | 22 & 4                  | —                              | 1012         |
|                   |                           |                              | 240   | 50/60 | 0-560          | 210*<br>90<br>V.D.  | 50.4‡          | CW                                  | 5-5  | D-D            |                         |                                |              |
| —                 | M6011-14D<br>M6011E-14D   | Three Phase Open Delta       | 120   | 50/60 | 0-120          | 420                 | 87.2           | CW                                  | 4-1-4  | D-1-D          | 22 & 5                  | —                              | 1237         |
|                   |                           |                              |       |       | 0-140          | 420                 | 101.7          | CW                                  | 2-1-2  | D-1-D          |                         |                                |              |
| —                 | M6011-14PS<br>M6011E-14PS | Single Phase Series Parallel | 240   | 50/60 | 0-240          | 420                 | 100.8          | CW                                  | 4-4  | D-D            | 22 & 4                  | —                              | 1237         |
|                   |                           |                              |       |       | 0-280          | 420                 | 117.6          | CW                                  | 2-2  | D-D            |                         |                                |              |
| —                 | M6020-14D<br>M6020E-14D   | Three Phase Open Delta       | 240   | 50/60 | 0-240<br>0-280 | 245<br>245          | 101.7<br>118.7 | CW<br>CW                            | 4-1-4<br>2-1-2   | D-1-D<br>D-1-D | 22 & 5                  | —                              | 1181         |
|                   |                           |                              | 120   | 50/60 | 0-280          | 245*<br>105<br>V.D. | 50.9‡          | CW                                  | 5-1-5  | D-1-D          |                         |                                |              |
| —                 | M6020-14PS<br>M6020E-14PS | Single Phase Series Parallel | 480   | 50/60 | 0-480<br>0-560 | 245<br>245          | 117.6<br>137.2 | CW<br>CW                            | 4-4<br>2-2   | D-D<br>D-D     | 22 & 4                  | —                              | 1181         |
|                   |                           |                              | 240   | 50/60 | 0-560          | 245*<br>105<br>V.D. | 58.8‡          | CW                                  | 5-5  | D-D            |                         |                                |              |
| —                 | M6011-16D<br>M6011E-16D   | Three Phase Open Delta       | 120   | 50/60 | 0-120          | 480                 | 99.6           | CW                                  | 4-1-4  | D-1-D          | 22 & 5                  | —                              | 1414         |
|                   |                           |                              |       |       | 0-140          | 480                 | 116.3          | CW                                  | 2-1-2  | D-1-D          |                         |                                |              |
| —                 | M6011-16PS<br>M6011E-16PS | Single Phase Series Parallel | 240   | 50/60 | 0-240          | 480                 | 115.2          | CW                                  | 4-4  | D-D            | 22 & 4                  | —                              | 1414         |
|                   |                           |                              |       |       | 0-280          | 480                 | 134.4          | CW                                  | 2-2  | D-D            |                         |                                |              |
| —                 | M6020-16D<br>M6020E-16D   | Three Phase Open Delta       | 240   | 50/60 | 0-240<br>0-280 | 280<br>280          | 116.3<br>135.6 | CW<br>CW                            | 4-1-4<br>2-1-2   | D-1-D<br>D-1-D | 22 & 5                  | —                              | 1350         |
|                   |                           |                              | 120   | 50/60 | 0-280          | 280*<br>120<br>V.D. | 58.1‡          | CW                                  | 5-1-5  | D-1-D          |                         |                                |              |
| —                 | M6020-16PS<br>M6020E-16PS | Single Phase Series Parallel | 480   | 50/60 | 0-480<br>0-560 | 280<br>280          | 134.4<br>156.8 | CW<br>CW                            | 4-4<br>2-2   | D-D<br>D-D     | 22 & 4                  | —                              | 1350         |
|                   |                           |                              | 240   | 50/60 | 0-560          | 280*<br>120<br>V.D. | 67.2‡          | CW                                  | 5-5  | D-D            |                         |                                |              |
| —                 | M6011-18D<br>M6011E-18D   | Three Phase Open Delta       | 120   | 50/60 | 0-120          | 540                 | 112.1          | CW                                  | 4-1-4  | D-1-D          | 22 & 5                  | —                              | 1597         |
|                   |                           |                              |       |       | 0-140          | 540                 | 130.8          | CW                                  | 2-1-2  | D-1-D          |                         |                                |              |
| —                 | M6011-18PS<br>M6011E-18PS | Single Phase Series Parallel | 240   | 50/60 | 0-240          | 540                 | 129.6          | CW                                  | 4-4  | D-D            | 22 & 4                  | —                              | 1597         |
|                   |                           |                              |       |       | 0-280          | 540                 | 151.2          | CW                                  | 2-2  | D-D            |                         |                                |              |
| —                 | M6020-18D<br>M6020E-18D   | Three Phase Open Delta       | 240   | 50/60 | 0-240<br>0-280 | 315<br>315          | 130.8<br>152.6 | CW<br>CW                            | 4-1-4<br>2-1-2   | D-1-D<br>D-1-D | 22 & 5                  | —                              | 1525         |
|                   |                           |                              | 120   | 50/60 | 0-280          | 315*<br>135<br>V.D. | 94.5‡          | CW                                  | 5-1-5  | D-1-D          |                         |                                |              |
| —                 | M6020-18PS<br>M6020E-18PS | Single Phase Series Parallel | 480   | 50/60 | 0-480<br>0-560 | 315<br>315          | 151.2<br>176.4 | CW<br>CW                            | 4-4<br>2-2   | D-D<br>D-D     | 22 & 4                  | —                              | 1525         |
|                   |                           |                              | 240   | 50/60 | 0-560          | 315*<br>135<br>V.D. | 75.6‡          | CW                                  | 5-5  | D-D            |                         |                                |              |
| —                 | M6011-12Y<br>M6011E-12Y   | Three Phase Wye              | 240   | 60    | 0-240          | 240                 | 99.6           | CW                                  | 4-4-4  | D-D-D          | 22 & 6                  | —                              | 1062         |
|                   |                           |                              |       |       | 0-280          | 240                 | 116.3          | CW                                  | 2-2-2  | D-D-D          |                         |                                |              |



# 6000 Series

| PART NUMBER       |                         | WIRING          | INPUT |             | OUTPUT         |                     |                | SHAFT ROTATION FOR VOLTAGE INCREASE | TERMINAL CONNECTIONS<br>For Increasing Voltage<br>As Viewed from Rotor End |                | SCHEMATIC<br>(Pg 8 & 9) | NET WEIGHT<br>IN LBS.<br>(MAX) |              |
|-------------------|-------------------------|-----------------|-------|-------------|----------------|---------------------|----------------|-------------------------------------|--|----------------|-------------------------|--------------------------------|--------------|
| MANUALLY OPERATED | MOTOR DRIVEN            |                 | VOLTS | HERTZ       | VOLTS          | MAX AMPS            | MAX KVA        |                                     | INPUT  | OUTPUT         |                         | MANUAL                         | MOTOR DRIVEN |
| —                 | M6020-12Y<br>M6020E-12Y | Three Phase Wye | 480   | 50/60<br>60 | 0-480<br>0-560 | 140<br>140          | 116.3<br>135.6 | CW<br>CW                            | 4-4-4<br>2-2-2   | D-D-D<br>D-D-D | 22 & 6                  | —                              | 1014         |
|                   |                         |                 | 240   | 60          | 0-560          | 140*<br>60<br>V.D.  | 58.1‡          | CW                                  | 5-5-5  | D-D-D          |                         |                                |              |
| —                 | M6011-15Y<br>M6011E-15Y | Three Phase Wye | 240   | 60          | 0-240<br>0-280 | 300<br>300          | 124.6<br>145.3 | CW<br>CW                            | 4-4-4<br>2-2-2   | D-D-D<br>D-D-D | 22 & 6                  | —                              | 1329         |
|                   |                         |                 |       |             |                |                     |                |                                     |  |                |                         |                                |              |
| —                 | M6020-15Y<br>M6020E-15Y | Three Phase Wye | 480   | 50/60<br>60 | 0-480<br>0-560 | 175<br>175          | 145.3<br>169.5 | CW<br>CW                            | 4-4-4<br>2-2-2   | D-D-D<br>D-D-D | 22 & 6                  | —                              | 1269         |
|                   |                         |                 | 240   | 60          | 0-560          | 175*<br>75<br>V.D.  | 72.7‡          | CW                                  | 5-5-5  | D-D-D          |                         |                                |              |
| —                 | M6011-18Y<br>M6011E-18Y | Three Phase Wye | 240   | 60          | 0-240<br>0-280 | 360<br>360          | 149.5<br>174.4 | CW<br>CW                            | 4-4-4<br>2-2-2   | D-D-D<br>D-D-D | 22 & 6                  | —                              | 1595         |
|                   |                         |                 |       |             |                |                     |                |                                     |  |                |                         |                                |              |
| —                 | M6020-18Y<br>M6020E-18Y | Three Phase Wye | 480   | 50/60<br>60 | 0-480<br>0-560 | 210<br>210          | 174.6<br>203.4 | CW<br>CW                            | 4-4-4<br>2-2-2   | D-D-D<br>D-D-D | 22 & 6                  | —                              | 1523         |
|                   |                         |                 | 240   | 60          | 0-560          | 210*<br>90<br>V.D.  | 87.2‡          | CW                                  | 5-5-5  | D-D-D          |                         |                                |              |
| —                 | M6011-21Y<br>M6011E-21Y | Three Phase Wye | 240   | 60          | 0-240<br>0-280 | 420<br>420          | 174.4<br>203.4 | CW<br>CW                            | 4-4-4<br>2-2-2   | D-D-D<br>D-D-D | 22 & 6                  | —                              | 1864         |
|                   |                         |                 |       |             |                |                     |                |                                     |  |                |                         |                                |              |
| —                 | M6020-21Y<br>M6020E-21Y | Three Phase Wye | 480   | 50/60<br>60 | 0-480<br>0-560 | 245<br>245          | 203.4<br>237.4 | CW<br>CW                            | 4-4-4<br>2-2-2   | D-D-D<br>D-D-D | 22 & 6                  | —                              | 1780         |
|                   |                         |                 | 240   | 60          | 0-560          | 245*<br>105<br>V.D. | 101.7‡         | CW                                  | 5-5-5  | D-D-D          |                         |                                |              |
| —                 | M6011-24Y<br>M6011E-24Y | Three Phase Wye | 240   | 60          | 0-240<br>0-280 | 480<br>480          | 199.3<br>232.5 | CW<br>CW                            | 4-4-4<br>2-2-2   | D-D-D<br>D-D-D | 22 & 6                  | —                              | 2132         |
|                   |                         |                 |       |             |                |                     |                |                                     |  |                |                         |                                |              |
| —                 | M6020-24Y<br>M6020E-24Y | Three Phase Wye | 480   | 50/60<br>60 | 0-480<br>0-560 | 280<br>280          | 232.5<br>271.3 | CW<br>CW                            | 4-4-4<br>2-2-2   | D-D-D<br>D-D-D | 22 & 6                  | —                              | 2036         |
|                   |                         |                 | 240   | 60          | 0-560          | 280*<br>120<br>V.D. | 116.3‡         | CW                                  | 5-5-5  | D-D-D          |                         |                                |              |
| —                 | M6011-27Y<br>M6011E-27Y | Three Phase Wye | 240   | 60          | 0-240<br>0-280 | 540<br>540          | 224.2<br>261.6 | CW<br>CW                            | 4-4-4<br>2-2-2   | D-D-D<br>D-D-D | 22 & 6                  | —                              | 2401         |
|                   |                         |                 |       |             |                |                     |                |                                     |  |                |                         |                                |              |
| —                 | M6020-27Y<br>M6020E-27Y | Three Phase Wye | 480   | 50/60<br>60 | 0-480<br>0-560 | 315<br>315          | 261.6<br>305.2 | CW<br>CW                            | 4-4-4<br>2-2-2   | D-D-D<br>D-D-D | 22 & 6                  | —                              | 2293         |
|                   |                         |                 | 240   | 60          | 0-560          | 315*<br>135<br>V.D. | 130.8‡         | CW                                  | 5-5-5  | D-D-D          |                         |                                |              |

\* Maximum output current in output voltage range from 0 to 25 percent above line voltage. At higher output voltages, output current must be reduced according to rating curve Figure B, page 6.

‡ Maximum KVA at maximum output and corresponding de-rated current. Maximum KVA at lower output voltages may be calculated from rating curve Figure B, page 6.

V.D. Voltage Doubler

Компания «Life Electronics» занимается поставками электронных компонентов импортного и отечественного производства от производителей и со складов крупных дистрибьюторов Европы, Америки и Азии.

С конца 2013 года компания активно расширяет линейку поставок компонентов по направлению коаксиальный кабель, кварцевые генераторы и конденсаторы (керамические, пленочные, электролитические), за счёт заключения дистрибьюторских договоров

Мы предлагаем:

- Конкурентоспособные цены и скидки постоянным клиентам.
- Специальные условия для постоянных клиентов.
- Подбор аналогов.
- Поставку компонентов в любых объемах, удовлетворяющих вашим потребностям.
- Приемлемые сроки поставки, возможна ускоренная поставка.
- Доставку товара в любую точку России и стран СНГ.
- Комплексную поставку.
- Работу по проектам и поставку образцов.
- Формирование склада под заказчика.
- Сертификаты соответствия на поставляемую продукцию (по желанию клиента).
- Тестирование поставляемой продукции.
- Поставку компонентов, требующих военную и космическую приемку.
- Входной контроль качества.
- Наличие сертификата ISO.

В составе нашей компании организован Конструкторский отдел, призванный помогать разработчикам, и инженерам.

Конструкторский отдел помогает осуществить:

- Регистрацию проекта у производителя компонентов.
- Техническую поддержку проекта.
- Защиту от снятия компонента с производства.
- Оценку стоимости проекта по компонентам.
- Изготовление тестовой платы монтаж и пусконаладочные работы.



Тел: +7 (812) 336 43 04 (многоканальный)  
Email: [org@lifeelectronics.ru](mailto:org@lifeelectronics.ru)