

DFLK-D50 SUB/S

Order No.: 2291286


The illustration shows version DFLK-D37 SUB/B



<http://eshop.phoenixcontact.de/phoenix/treeViewClick.do?UID=2291286>

VARIOFACE panel feed-through module, for direct coupling of single signal lines of up to 2.5 mm², with D-Subminiature pin strip, 50-pos.

Commercial data

GTIN (EAN)	 4 017918 058333
sales group	I011
Pack	5 pcs.
Customs tariff	85369010
Catalog page information	Page 288 (IF-2009)

Product notes

WEEE/RoHS-compliant since:
06/12/2007



<http://www.download.phoenixcontact.com>
Please note that the data given here has been taken from the online catalog. For comprehensive information and data, please refer to the user documentation. The General Terms and Conditions of Use apply to Internet downloads.

Technical data

General data

Nominal voltage U_N	125 V AC/DC
Max. current carrying capacity per branch	2.5 A
Max. total current of all branches	50 A
Number of positions	50
Width	39 mm

Height	143.4 mm
Depth	33 mm
Status display	No
Ambient temperature (operation)	-20 °C ... 50 °C
Ambient temperature (storage/transport)	-20 °C ... 70 °C
Mounting position	Any
Assembly instructions	In rows with zero spacing
Standard - Electrical safety	Air and creepage distances DIN EN 50178 basic insulation
Pollution degree	2
Surge voltage category	II

Connection data

Connection 1	PCB connection
Connection in acc. with standard	IEC / EN
Type of connection	Screw connection
Conductor cross section solid min.	0.2 mm ²
Conductor cross section solid max.	4 mm ²
Conductor cross section stranded min.	0.2 mm ²
Conductor cross section stranded max.	2.5 mm ²
Conductor cross section AWG/kcmil min.	24
Conductor cross section AWG/kcmil max	12
Stripping length	8 mm
Screw thread	M3
Connection 2	D-SUB connection
Type of connection	D-SUB connector
Number of positions	50

Certificates / Approvals



Certification

CUL, GOST, UL

Accessories		
Item	Designation	Description
Cable/conductor		
2302421	CABLE D-SUB-B-B-S/.../.../...	Shielded round cable, assembled with two D-SUB female connectors, variable cable length
2302340	CABLE D-SUB-S/.../.../...	Shielded round cable, assembled with one D-SUB male and one female connector, variable cable length
2926292	CABLE-D-50SUB/F/OE/0,25/S/0,5M	Shielded cable with a 50-pos. D-SUB female connector and one open end. The individual wires are labeled 1 to 50 and fitted with ferrules. The braided shield is routed to a separate cable end. Cable length: 0.5 m.
2926302	CABLE-D-50SUB/F/OE/0,25/S/1,0M	Shielded cable with a 50-pos. D-SUB female connector and one open end. The individual wires are labeled 1 to 50 and fitted with ferrules. The braided shield is routed to a separate cable end. Cable length: 1 m.
2926315	CABLE-D-50SUB/F/OE/0,25/S/1,5M	Shielded cable with a 50-pos. D-SUB female connector and one open end. The individual wires are labeled 1 to 50 and fitted with ferrules. The braided shield is routed to a separate cable end. Cable length: 1.5 m.
2926328	CABLE-D-50SUB/F/OE/0,25/S/2,0M	Shielded cable with a 50-pos. D-SUB female connector and one open end. The individual wires are labeled 1 to 50 and fitted with ferrules. The braided shield is routed to a separate cable end. Cable length: 2 m.
2926331	CABLE-D-50SUB/F/OE/0,25/S/3,0M	Shielded cable with a 50-pos. D-SUB female connector and one open end. The individual wires are labeled 1 to 50 and fitted with ferrules. The braided shield is routed to a separate cable end. Cable length: 3 m.
2926344	CABLE-D-50SUB/F/OE/0,25/S/4,0M	Shielded cable with a 50-pos. D-SUB female connector and one open end. The individual wires are labeled 1 to 50 and fitted with ferrules. The braided shield is routed to a separate cable end. Cable length: 4 m.
2926357	CABLE-D-50SUB/F/OE/0,25/S/6,0M	Shielded cable with a 50-pos. D-SUB female connector and one open end. The individual wires are labeled 1 to 50 and fitted with ferrules. The braided shield is routed to a separate cable end. Cable length: 6 m.
2302269	CABLE-D50SUB/B/S/ 50/KONFEK/S	Round shielded cable set, with 50-pos. D-SUB female and male connectors, cable length: 0.5 m
2302272	CABLE-D50SUB/B/S/100/KONFEK/S	Round shielded cable set, with 50-pos. D-SUB female and male connectors, cable length: 1 m
2302285	CABLE-D50SUB/B/S/150/KONFEK/S	Round shielded cable set, with 50-pos. D-SUB female and male connectors, cable length: 1.5 m
2302298	CABLE-D50SUB/B/S/200/KONFEK/S	Round shielded cable set, with 50-pos. D-SUB female and male connectors, cable length: 2 m
2302308	CABLE-D50SUB/B/S/300/KONFEK/S	Round shielded cable set, with 50-pos. D-SUB female and male connectors, cable length: 3 m

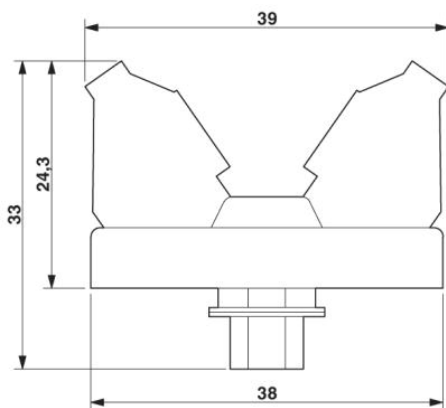
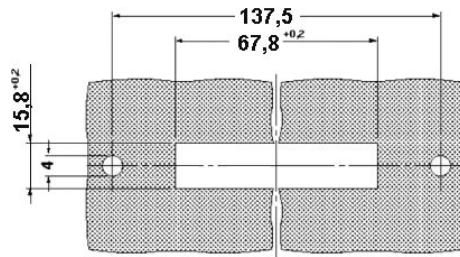
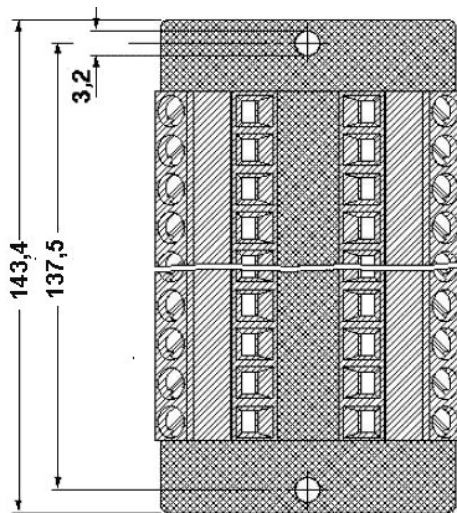
2302311	CABLE-D50SUB/B/S/400/ KONFEK/S	Round shielded cable set, with 50-pos. D-SUB female and male connectors, cable length: 4 m
2302324	CABLE-D50SUB/B/S/600/ KONFEK/S	Round shielded cable set, with 50-pos. D-SUB female and male connectors, cable length: 6 m

General

2900908	CABLE-D-50SUB-F-OE-0,25- S/...	Shielded cable with a 50-pos. D-SUB female connector and one open end. The individual wires are labeled 1 to 50 and fitted with ferrules. The braided shield is routed to a separate cable end. Cable length: variable.
---------	-----------------------------------	---

Diagrams/Drawings

Dimensioned drawing



Address

PHOENIX CONTACT Deutschland GmbH
Flachmarktstr. 8
32825 Blomberg, Germany
Phone +49 5235 3 12000
Fax +49 5235 3 41200
<http://www.phoenixcontact.de>



© 2010 Phoenix Contact
Technical modifications reserved;

Компания «Life Electronics» занимается поставками электронных компонентов импортного и отечественного производства от производителей и со складов крупных дистрибьюторов Европы, Америки и Азии.

С конца 2013 года компания активно расширяет линейку поставок компонентов по направлению коаксиальный кабель, кварцевые генераторы и конденсаторы (керамические, пленочные, электролитические), за счёт заключения дистрибьюторских договоров

Мы предлагаем:

- Конкурентоспособные цены и скидки постоянным клиентам.
- Специальные условия для постоянных клиентов.
- Подбор аналогов.
- Поставку компонентов в любых объемах, удовлетворяющих вашим потребностям.
- Приемлемые сроки поставки, возможна ускоренная поставка.
- Доставку товара в любую точку России и стран СНГ.
- Комплексную поставку.
- Работу по проектам и поставку образцов.
- Формирование склада под заказчика.
- Сертификаты соответствия на поставляемую продукцию (по желанию клиента).
- Тестирование поставляемой продукции.
- Поставку компонентов, требующих военную и космическую приемку.
- Входной контроль качества.
- Наличие сертификата ISO.

В составе нашей компании организован Конструкторский отдел, призванный помогать разработчикам, и инженерам.

Конструкторский отдел помогает осуществить:

- Регистрацию проекта у производителя компонентов.
- Техническую поддержку проекта.
- Защиту от снятия компонента с производства.
- Оценку стоимости проекта по компонентам.
- Изготовление тестовой платы монтаж и пусконаладочные работы.



Тел: +7 (812) 336 43 04 (многоканальный)

Email: org@lifeelectronics.ru