

## 1-channel Switching Gate Driver

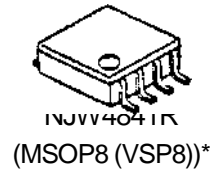
### ■ GENERAL DESCRIPTION

The NJW4841 is a High Speed Switching Gate Driver that is applicable 2A peak current.

The NJW4841 features are Withstand voltage of 40V, recommended operating voltage range: 4V to 20V and Fast switching time

The NJW4841 is suitable for DC / AC Motor Drive, Switching Power Supply and DC / DC Converter Applications.

### ■ PACKAGE OUTLINE

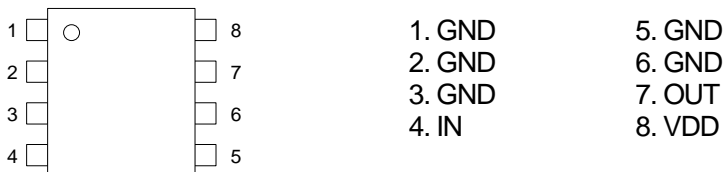


### ■ FEATURES

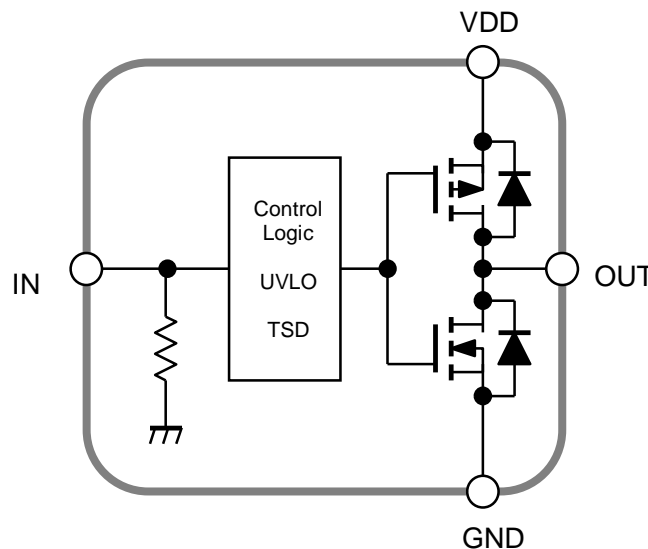
- Output Peak Current:  $\pm 2A$  (peak)
- Operating Voltage Range: 4V to 20V
- High Speed Switching:  $t_r/t_f=25ns/20ns$ (typ.) at  $C_L=2200pF$
- Corresponding with Logic Voltage Operation: 3V/5V
- Built-in Thermal Shut Down
- Under Voltage Lockout
- Package: MSOP8 (VSP8)\*

\* MEET JEDEC MO-187-DA

### ■ PIN CONFIGURATION



### ■ BLOCK DIAGRAM



# NJW4841

## ■ ABSOLUTE MAXIMUM RATINGS

(Ta=25°C)

PARAMETER	SYMBOL	RATINGS	UNIT	REMARK
Supply Voltage	V <sub>DD</sub>	+40	V	VDD-GND Pin
Input Voltage	V <sub>IN</sub>	-0.3 to +6	V	IN-GND Pin
Power Dissipation	P <sub>D</sub>	720 (*1) 1100 (*2)	mW	-
Junction Temperature	T <sub>j</sub>	-40 to +150	°C	-
Operating Temperature	T <sub>opr</sub>	-40 to +85	°C	-
Storage Temperature	T <sub>stg</sub>	-50 to +150	°C	-

(\*1): Mounted on glass epoxy board. (76.2×114.3×1.6mm: based on EIA/JDEC standard, 2Layers)

(\*2): Mounted on glass epoxy board. (76.2×114.3×1.6mm: based on EIA/JDEC standard, 4Layers),

internal Cu area: 74.2×74.2mm

## ■ RECOMMENDED OPERATING CONDITIONS

(Ta=25°C)

PARAMETER	SYMBOL	MIN.	TYP.	MAX.	UNIT	REMARK
Operating Voltage	V <sub>DD</sub>	4.0	-	20	V	VDD-GND Pin
Input Voltage	V <sub>IN</sub>	0	-	5.5	V	IN-GND Pin

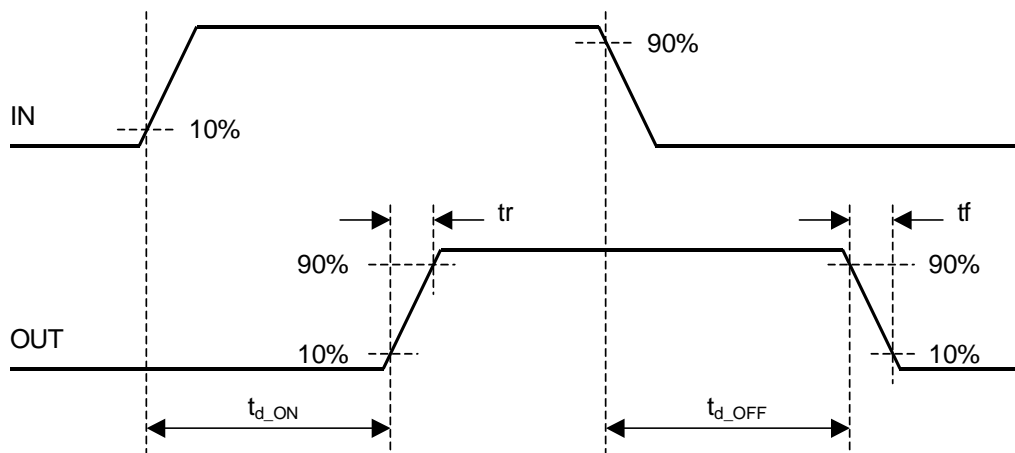
## ■ ELECTRICAL CHARACTERISTICS

(Unless otherwise noted,  $V_{DD}=16V$ ,  $T_a=25^\circ C$ )

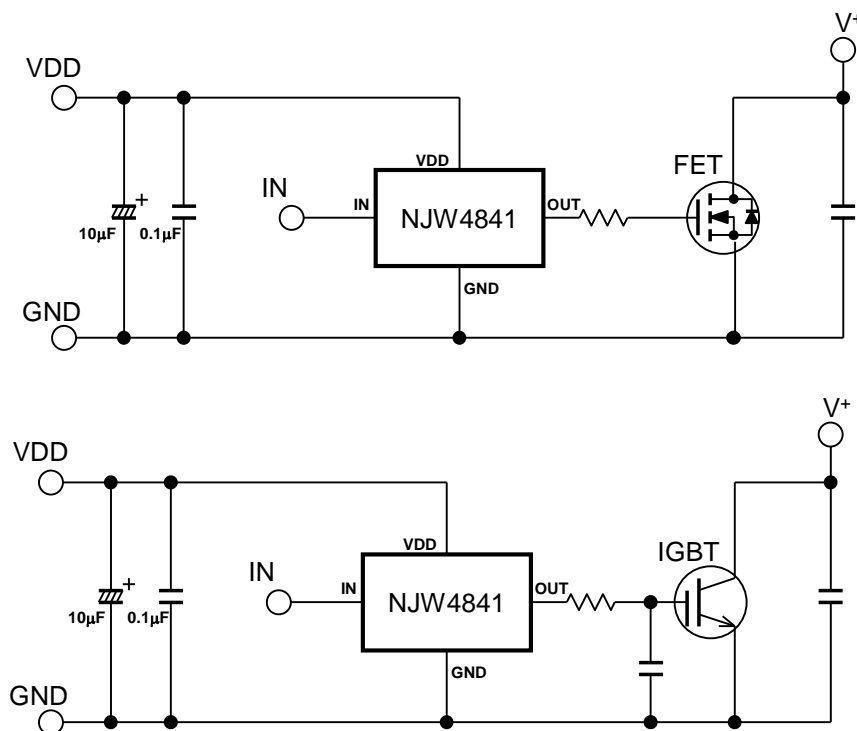
PARAMETER	SYMBOL	TEST CONDITIONS	MIN.	TYP.	MAX.	UNIT
<b>General</b>						
Quiescent Current	$I_{Q1}$	$V_{IN}=5V$	–	1.5	2.5	mA
	$I_{Q2}$	$V_{IN}=0V$	–	1.3	2.3	mA
<b>Output Block</b>						
Output Peak Current	$I_{PK1}$	Pulse Width $\leq 10\mu s$ , $V_{OUT}=0V$	–	2	–	A
	$I_{PK2}$	Pulse Width $\leq 10\mu s$ , $V_{OUT}=16V$	–	2	–	A
Output ON Resistance (High-Side / Low-Side)	$R_{DSH}$	$I_{O-SOURCE}=100mA$	–	2.1	3.9	$\Omega$
	$R_{DSL}$	$I_{O-SINK}=100mA$	–	1.5	2.8	$\Omega$
Output Pull Down Resistance	$R_{OUTPD}$		60	100	140	k $\Omega$
<b>Input Circuit Block</b>						
IN Pin High Voltage	$V_{IHIN}$		2.0	–	5.5	V
IN Pin Low Voltage	$V_{ILIN}$		0	–	0.8	V
Input Pull Down Resistance	$R_{INPD}$		60	100	140	k $\Omega$
<b>UVLO Block</b>						
UVLO Release Voltage	$V_{UVLO2}$		2.8	3.3	3.8	V
UVLO Operating Voltage	$V_{UVLO1}$		2.5	3.0	3.5	V
UVLO Hysteresis Voltage	$V_{UVLO}$	$V_{UVLO2} - V_{UVLO1}$	–	0.3	–	V
<b>Output Rise/Fall characteristics</b>						
Output Rise Time	$t_r$	$C_L=2200pF$ , $V_{IN}=0$ to $5V$	–	25	–	ns
Output Fall Time	$t_f$	$C_L=2200pF$ , $V_{IN}=5$ to $0V$	–	20	–	ns
Rise Delay Time	$t_{d ON}$	$C_L=2200pF$ , $V_{IN}=0$ to $5V$	–	40	–	ns
Fall Delay Time	$t_{d OFF}$	$C_L=2200pF$ , $V_{IN}=5$ to $0V$	–	45	–	ns

# NJW4841

## ■ TIMING CHART



## ■ TYPICAL APPLICATION



## ■ APPLICATION TIPS

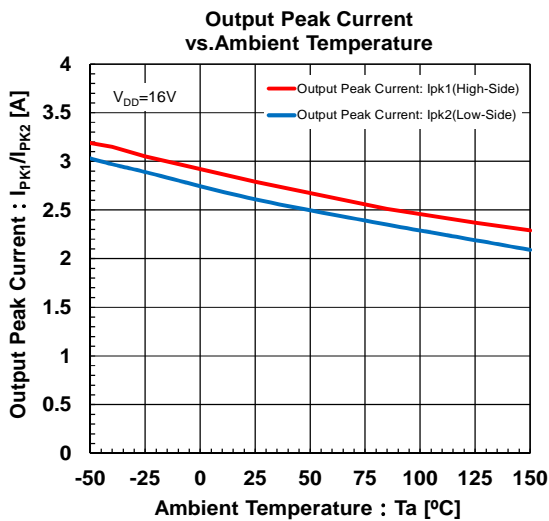
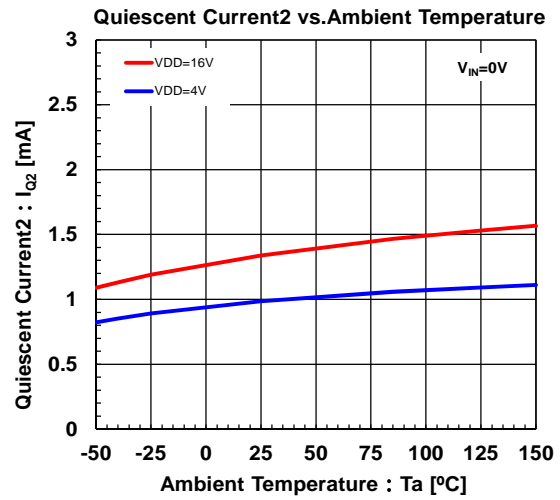
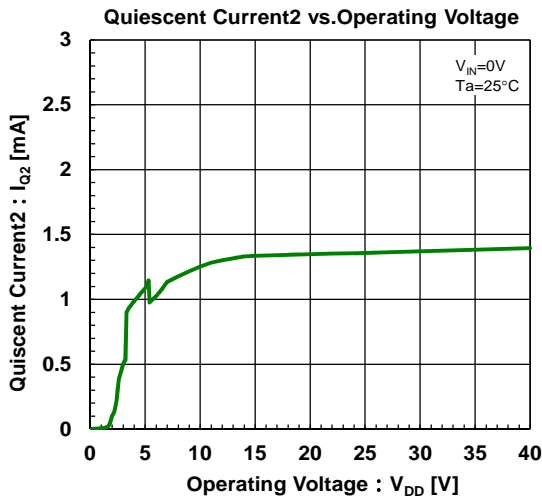
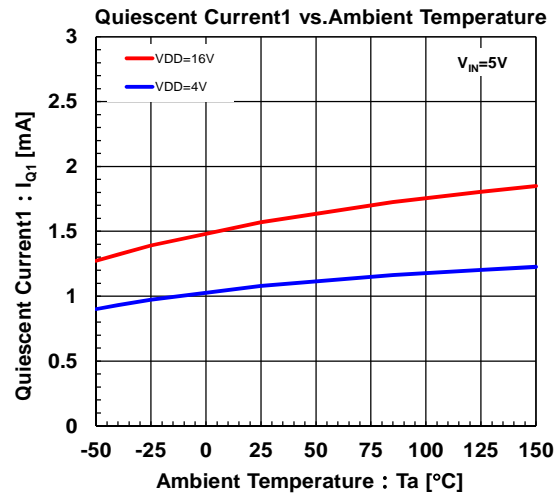
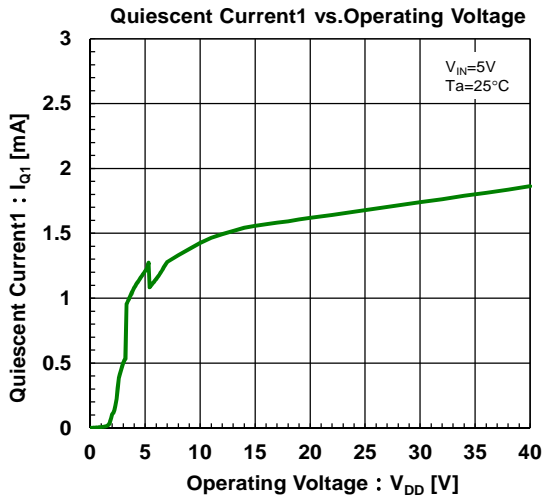
In the application that does a high-speed switching of NJW4841, because the current flow corresponds to the input frequency, the substrate (PCB) layout becomes an important.

NJW4841 is driving the High-side/Low-side SW gate with high speed to reduce switching losses. The transient voltage is generated by parasitic inductance and a high-speed current change of high side and low side SW.

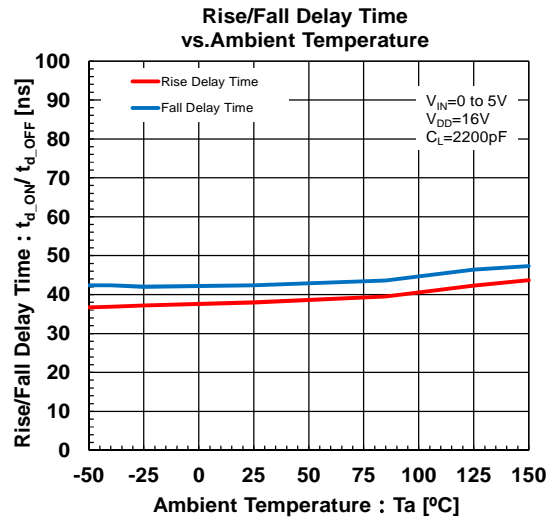
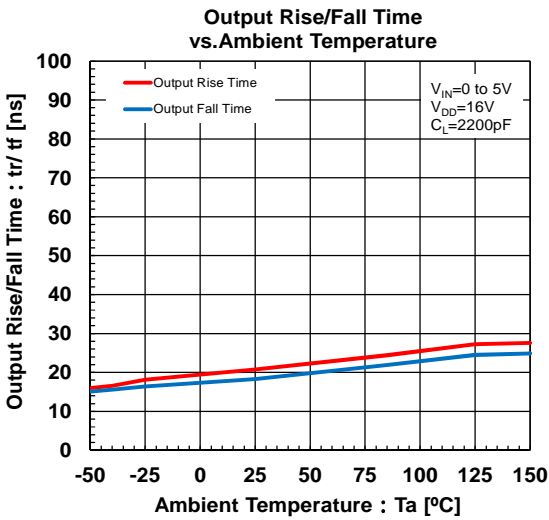
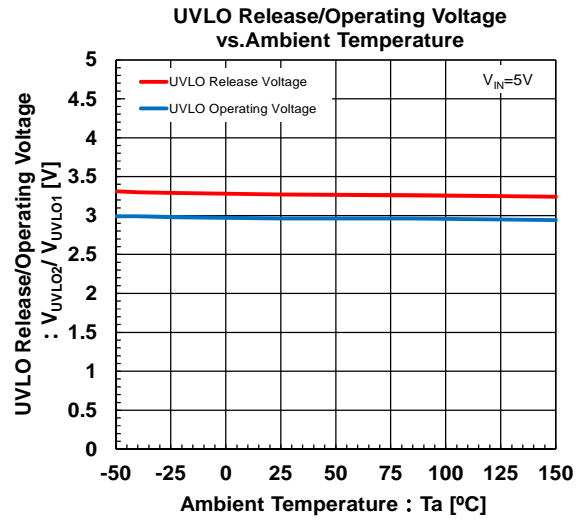
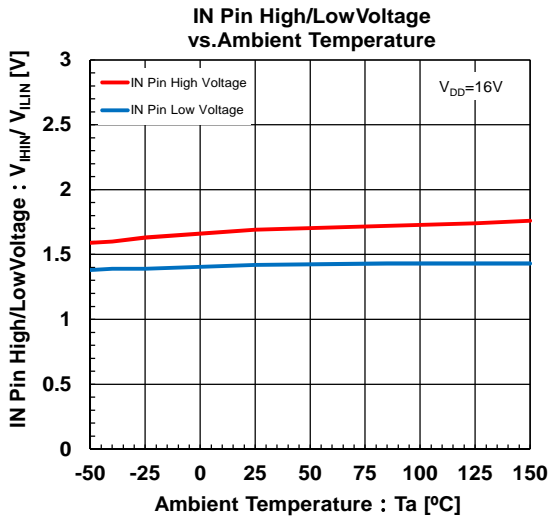
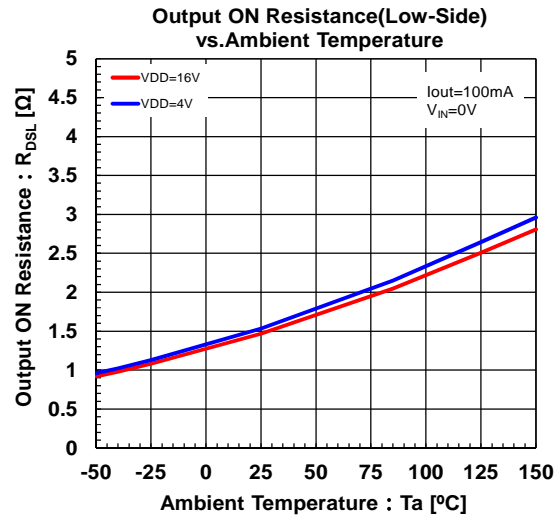
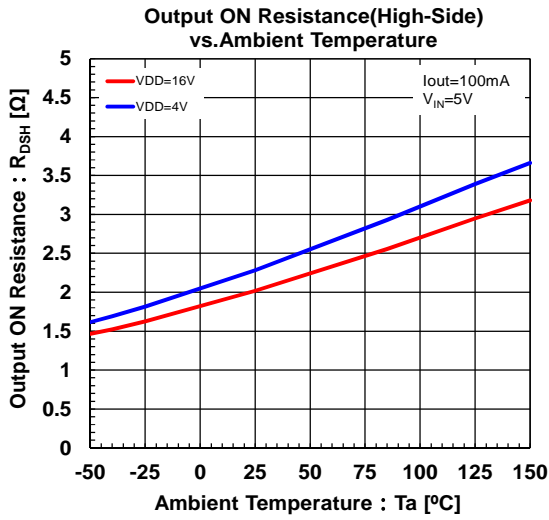
You should attempt the transient voltage decrease by making a current loop area minimize as much as possible. Therefore, you should make a current flowing line thick and short as much as possible.

You should insert a bypass capacitor between the VDD pin and the GND pin to prevent malfunction by transient voltage and/or exceed maximum input voltage rating. The recommended bypass capacitor is low ESR and fine high frequency characteristic (NJRC recommends 0.1 $\mu$ F or more). An aluminum electrolytic capacitor is recommended for smoothing capacitor (NJRC recommends 10 $\mu$ F or more). However, you should use large capacitor by sufficient evaluation (assessment) due to load condition and/or application use environment. (There is a possibility that the supply voltage rises by inductive kickback when the supply current of the inductive load is large.) The bypass capacitors should be connected as near as possible to the VDD pin.

## CHARACTERISTICS



## CHARACTERISTICS



**[CAUTION]**

The specifications on this datasheets are only given for information , without any guarantee as regards either mistakes or omissions.

The application circuits in this datasheets are described only to show representative usages of the product and not intended for the guarantee or permission of any right including the industrial rights.

# Mouser Electronics

Authorized Distributor

Click to View Pricing, Inventory, Delivery & Lifecycle Information:

[NJR:](#)

[NJW4841R-TE1](#) [NJW4841RT1-TE1](#)



Компания «Life Electronics» занимается поставками электронных компонентов импортного и отечественного производства от производителей и со складов крупных дистрибьюторов Европы, Америки и Азии.

С конца 2013 года компания активно расширяет линейку поставок компонентов по направлению коаксиальный кабель, кварцевые генераторы и конденсаторы (керамические, пленочные, электролитические), за счёт заключения дистрибьюторских договоров

Мы предлагаем:

- Конкуренеспособные цены и скидки постоянным клиентам.
- Специальные условия для постоянных клиентов.
- Подбор аналогов.
- Поставку компонентов в любых объемах, удовлетворяющих вашим потребностям.
- Приемлемые сроки поставки, возможна ускоренная поставка.
- Доставку товара в любую точку России и стран СНГ.
- Комплексную поставку.
- Работу по проектам и поставку образцов.
- Формирование склада под заказчика.
- Сертификаты соответствия на поставляемую продукцию (по желанию клиента).
- Тестирование поставляемой продукции.
- Поставку компонентов, требующих военную и космическую приемку.
- Входной контроль качества.
- Наличие сертификата ISO.

В составе нашей компании организован Конструкторский отдел, призванный помогать разработчикам, и инженерам.

Конструкторский отдел помогает осуществить:

- Регистрацию проекта у производителя компонентов.
- Техническую поддержку проекта.
- Защиту от снятия компонента с производства.
- Оценку стоимости проекта по компонентам.
- Изготовление тестовой платы монтаж и пусконаладочные работы.



Тел: +7 (812) 336 43 04 (многоканальный)

Email: [org@lifeelectronics.ru](mailto:org@lifeelectronics.ru)