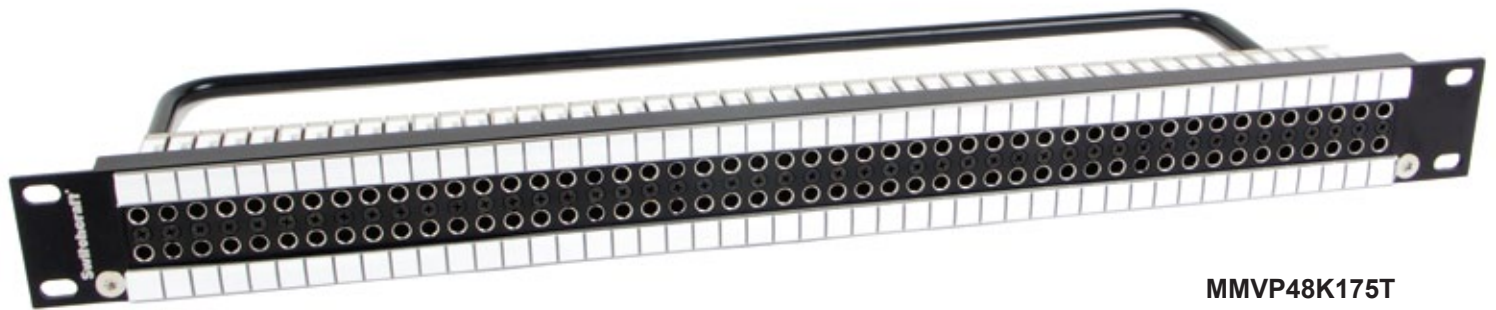


Switchcraft®

MMVP Micro Video Patchbays



MMVP48K175T
-1RU / 96 Patch-points
-Fully Normalled
-75 Ohm Terminated

Features

- Based on the proven, reliable, patented technology of our MVJ Series of HD video jacks.
- Screw in, all metal jack design withstands vibration in mobile applications.
- Rated at 3GHz - meets SMPTE 424M specifications for HD patching.

MMVP Micro Video Patchbays

The MMVP Series provides the highest level of density for SMPTE 424M video and AES/EBU digital audio patching... 48 channels (96 patch-points) in a 1RU 19" rack space.

Based on the patented, proven design of our MVJ MidSize video jack, the all metal, screw-in jack provides complete stability and durability in even the most extreme applications, including mobile production. The MMVP jack is rated at 3GHz and meets SMPTE 424M specifications. Industry standard DIN 1.0 / 2.3 rear termination makes installation easy and eliminates the need for proprietary connectors or special tooling.

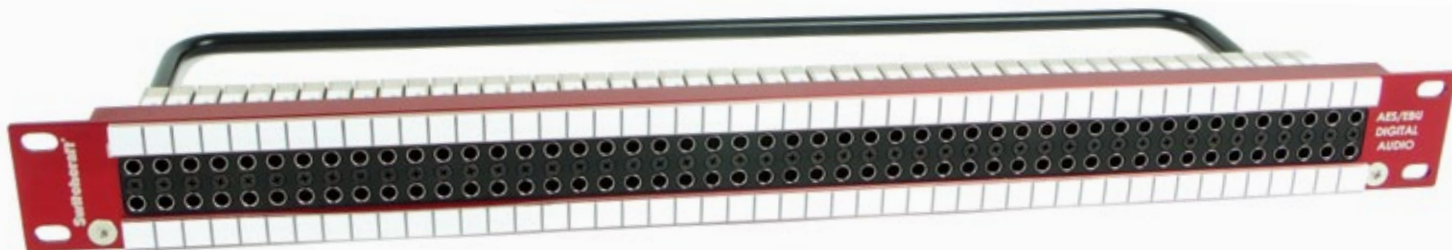
The MMVP Series is available in 1RU, 1.5RU, and 2RU heights for greater flexibility. 1.5RU and 2RU versions are available with two rows of jacks (4x48 density). All versions are available normalled, non-normalled, 75 Ohm terminated or non-terminated.

Made in Chicago, USA 



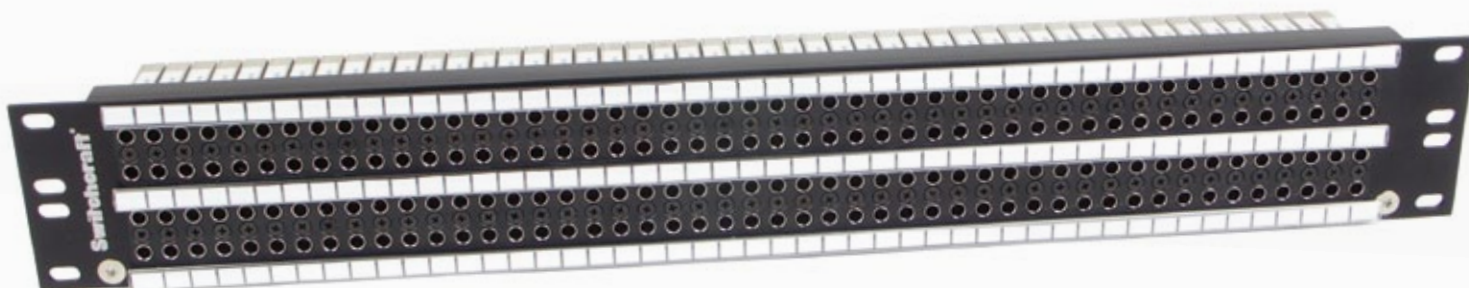
Switchcraft®

MMVP Micro Video Patchbays



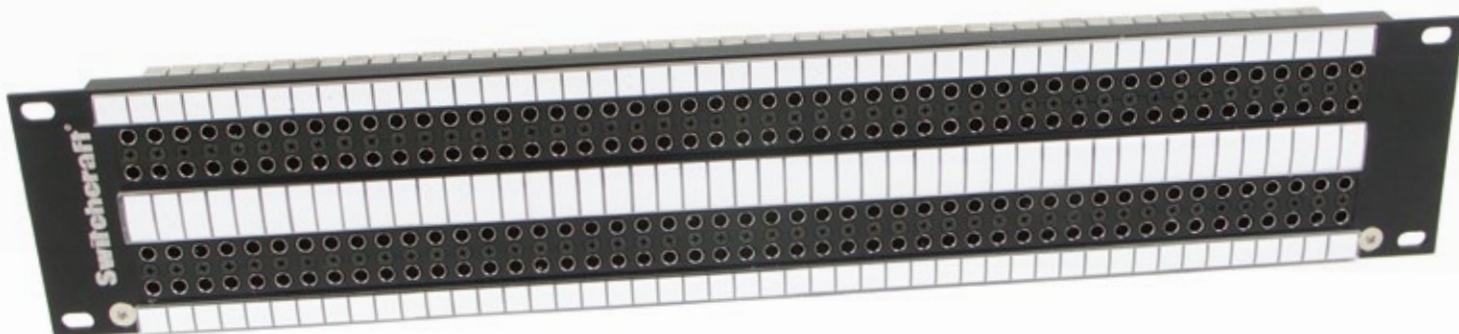
MMVP48K1NTAES

- 1RU / 96 Patch-points
- Designed for AES/EBU Digital Audio



MMVP96K275T

- 1.5RU / 192 Patch-points
- Fully Normalled
- 75 Ohm Terminated



MMVP96K375T

- 2RU / 192 Patch-points
- Fully Normalled
- 75 Ohm Terminated



Switchcraft®

MMVP Micro Video Patchbays

Patchbay Part Numbers		MMVP96K2NT	1.5RU, 4x48, Normalled, Non-Terminated
		MMVP96K2N75T	1.5RU, 4x48, Non-Normalled, Terminated
MMVP48K175T	1RU, 2x48, Normalled, Terminated	MMVP96K2NNT	1.5RU, 4x48, Non-Normalled, Non-Terminated
MMVP48K1NT	1RU, 2x48, Normalled, Non-Terminated	MMVP48K375T	2RU, 2x48, Normalled, Terminated
MMVP48K1N75T	1RU, 2x48, Non-Normalled, Terminated	MMVP48K3NT	2RU, 2x48, Normalled, Non-Terminated
MMVP48K1NNT	1RU, 2x48, Non-Normalled, Non-Terminated	MMVP48K3N75T	2RU, 2x48, Non-Normalled, Terminated
MMVP48K275T	1.5RU, 2x48, Normalled, Terminated	MMVP48K3NNT	2RU, 2x48, Non-Normalled, Non-Terminated
MMVP48K2NT	1.5RU, 2x48, Normalled, Non-Terminated	MMVP96K375T	2RU, 4x48, Normalled, Terminated
MMVP48K2N75T	1.5RU, 2x48, Non-Normalled, Terminated	MMVP96K3NT	2RU, 4x48, Normalled, Non-Terminated
MMVP48K2NNT	1.5RU, 2x48, Non-Normalled, Non-Terminated	MMVP96K3N75T	2RU, 4x48, Non-Normalled, Terminated
MMVP96K275T	1.5RU, 4x48, Normalled, Terminated	MMVP96K3NNT	2RU, 4x48, Non-Normalled, Non-Terminated

Typical Insertion Loss



Smith Chart



Start: 30KHz / Stop: 3.0 GHz

Typical Return Loss



Switchcraft®

MMVP Micro Video Patchbays

MMVP Series Patchcords

MMVP Series patchcords are perfect for the most critical HD video and AES/EBU digital audio patching applications. They are available in a wide variety of lengths and colors. Each patchcord is assembled using premium, low loss cabling and a rugged overmolded strain relief for long lasting dependability.

Part Number Configurator

Plug Type 1-10 Ft. Color Code
VMMP + +

Color: BK = Black GN = Green Y = Yellow
R = Red BL = Blue
O = Orange GY = Gray



VMMP2BK

DIN 1.0/2.3 Connectors

Our DIN 1.0/2.3 connectors utilize a unique push/pull lock and release feature, simplifying installation and modification. They are 75 Ohm rated, compatible with the most widely used cable sizes, and can be terminated using a standard BNC crimp tool.



DIN1855A

Part Numbers

DIN1855A	Compatible with Belden 1855A
DIN179DT	Compatible with Belden 179DT
DIN1505A	Compatible with Belden 1505A
DIN1694A	Compatible with Belden 1694A

DIN 1.0/2.3 Insertion / Withdrawal Tool

The MMVPTL insertion / withdrawal tool is 16" long and allows easy access to the DIN 1.0/2.3 connectors on the back of the patchbay, making setup and modification fast and easy.



MMVPTL



Компания «Life Electronics» занимается поставками электронных компонентов импортного и отечественного производства от производителей и со складов крупных дистрибьюторов Европы, Америки и Азии.

С конца 2013 года компания активно расширяет линейку поставок компонентов по направлению коаксиальный кабель, кварцевые генераторы и конденсаторы (керамические, пленочные, электролитические), за счёт заключения дистрибьюторских договоров

Мы предлагаем:

- Конкурентоспособные цены и скидки постоянным клиентам.
- Специальные условия для постоянных клиентов.
- Подбор аналогов.
- Поставку компонентов в любых объемах, удовлетворяющих вашим потребностям.
- Приемлемые сроки поставки, возможна ускоренная поставка.
- Доставку товара в любую точку России и стран СНГ.
- Комплексную поставку.
- Работу по проектам и поставку образцов.
- Формирование склада под заказчика.
- Сертификаты соответствия на поставляемую продукцию (по желанию клиента).
- Тестирование поставляемой продукции.
- Поставку компонентов, требующих военную и космическую приемку.
- Входной контроль качества.
- Наличие сертификата ISO.

В составе нашей компании организован Конструкторский отдел, призванный помогать разработчикам, и инженерам.

Конструкторский отдел помогает осуществить:

- Регистрацию проекта у производителя компонентов.
- Техническую поддержку проекта.
- Защиту от снятия компонента с производства.
- Оценку стоимости проекта по компонентам.
- Изготовление тестовой платы монтаж и пусконаладочные работы.



Тел: +7 (812) 336 43 04 (многоканальный)
Email: org@lifeelectronics.ru