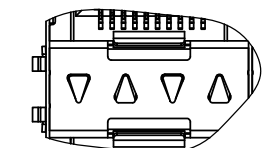
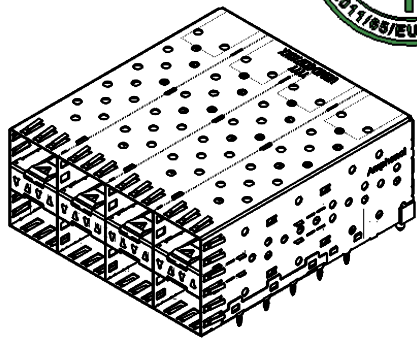
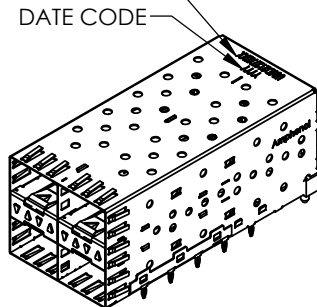




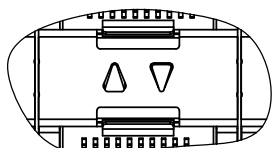
REVISIONS				
REV.	ECN	DESCRIPTION	DATE	APPROVED
A		PROPOSAL	MAR.27.14	J.SI

PART NUMBER  
(LAST DIGIT INDICATING  
PACKAGING TYPE, NOT  
PRINTED ON THE PART)

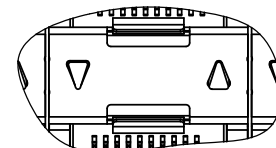
DATE CODE



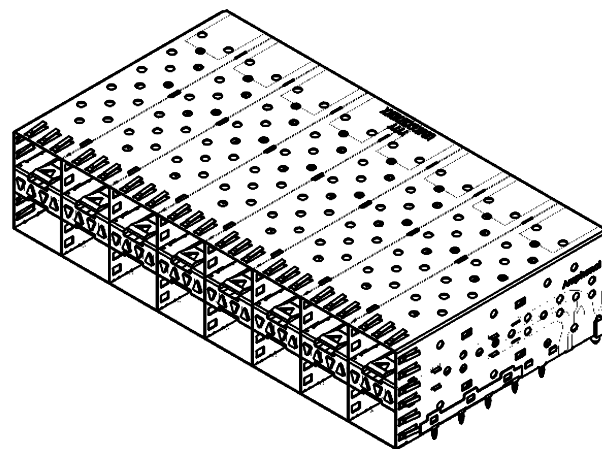
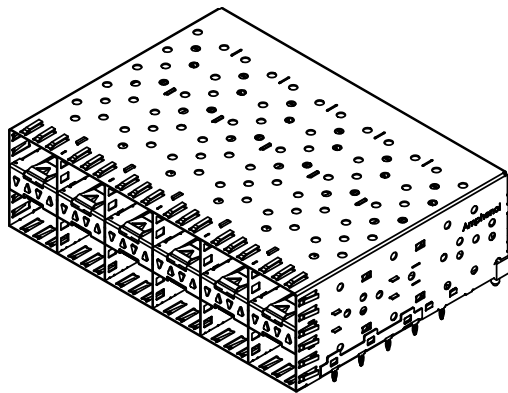
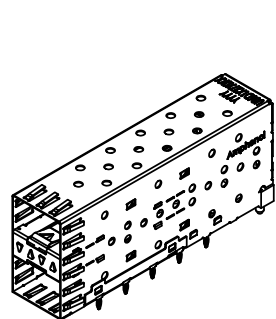
UE86-DX127-10XX1  
(4 LIGHT PIPES PER 2X1)



UE86-DX127-20XX1  
(2 INNER LIGHT PIPES PER 2X1)



UE86-DX127-30XX1  
(2 INNER LIGHT PIPES PER 2X1)



MATERIAL: (RoHS COMPLIANT)

- CAGE - PRESS FIT:  
COPPER ALLOY
- PLATING:  
NICKEL 2.54 µm MIN.
- CONNECTOR - PRESS FIT:  
PLASTIC HOUSING:  
LCP, FLAMMABILITY RATING UL94-V0.
- CONTACTS:  
PHOSPHOR BRONZE
- PLATING OPTION:  
SEE AMPHENOL PART NUMBER  
CONFIGURATION FOR OPTIONS.
- LIGHT PIPE:  
CLEAR POLYCARBONATE, FLAMMABILITY  
RATING UL94-V0.
- PACKAGING:  
TRAY PACKAGING.
- TEMPERATURE RANGE:  
-40°C TO +85°

**AMPHENOL PART NUMBER CONFIGURATION**

UE86 - D X 1 2 7 - X 0 X X 1

**NUMBER OF PORTS**

- 1 = 2X1
- 2 = 2X2
- 4 = 2X4
- 6 = 2X6
- 8 = 2X8

**LIGHT PIPE CONFIGURATION**

- 1 = 4 LIGHT PIPES PER 2X1
- 2 = 2 INNER LIGHT PIPES PER 2X1
- 3 = 2 OUTER LIGHT PIPES PER 2X1

**PACKAGING**

- 1 = TRAY

**CAGE PLATING**

- 2 = NICKEL
- 3 = MATTE TIN

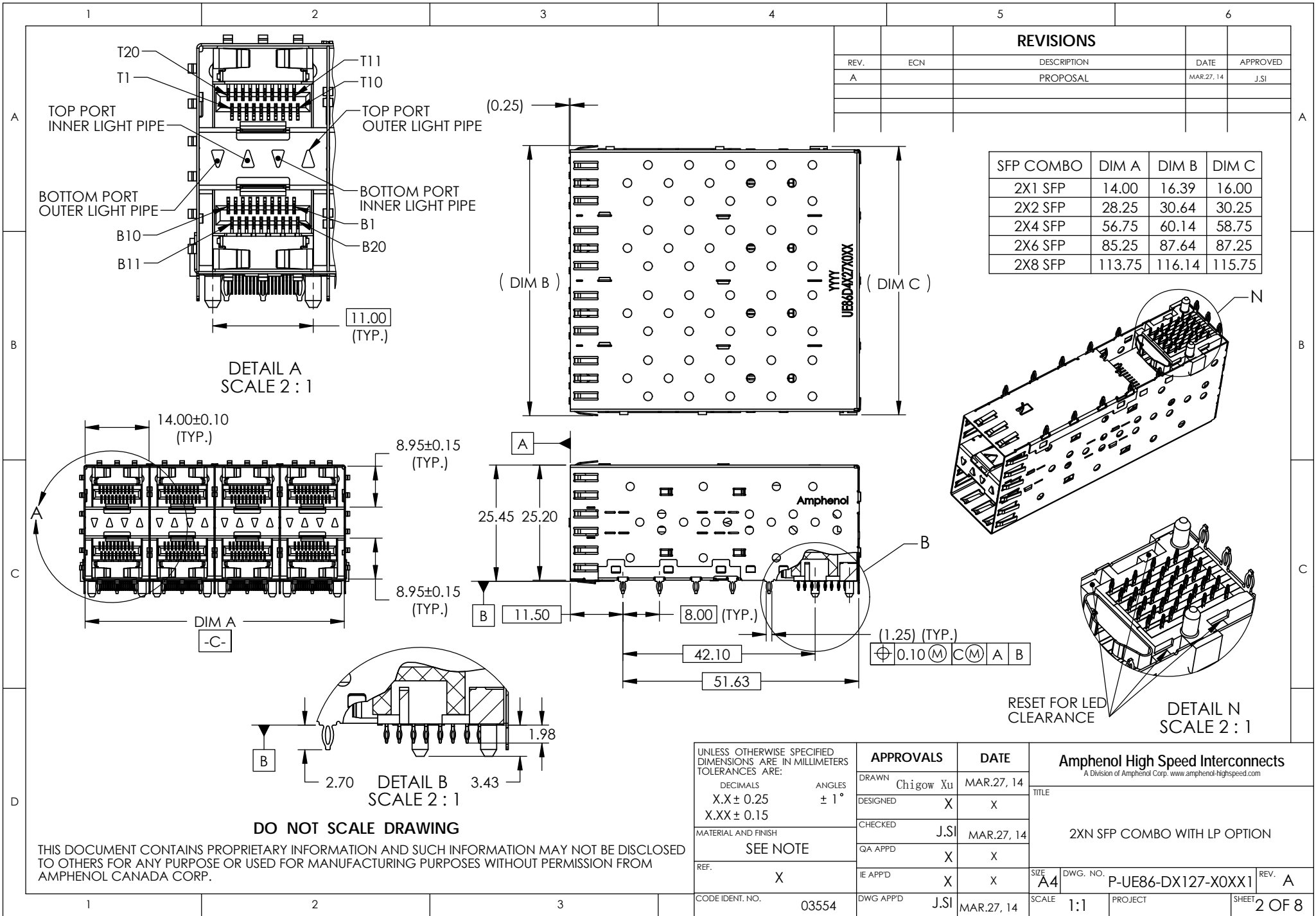
**PRESS FIT CONNECTOR PLATING**

- 3 = 0.76 µm MIN. GOLD ON MATING AREA  
3.81-7.62 µm MATTE TIN ON TERMINATION
- 6 = 0.38 µm MIN. GOLD ON MATING AREA  
3.81-7.62 µm MATTE TIN ON TERMINATION

**DO NOT SCALE DRAWING**

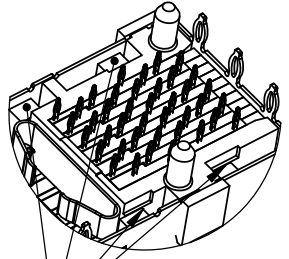
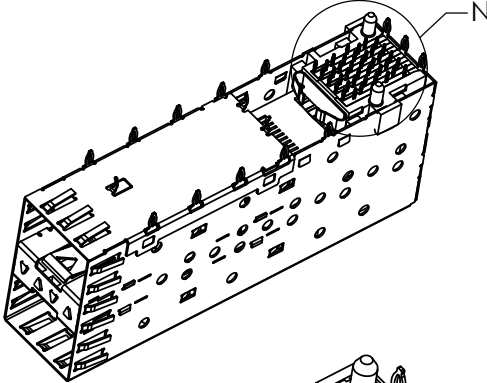
THIS DOCUMENT CONTAINS PROPRIETARY INFORMATION AND SUCH INFORMATION MAY NOT BE DISCLOSED TO OTHERS FOR ANY PURPOSE OR USED FOR MANUFACTURING PURPOSES WITHOUT PERMISSION FROM AMPHENOL CANADA CORP.

UNLESS OTHERWISE SPECIFIED DIMENSIONS ARE IN MILLIMETERS TOLERANCES ARE: DECIMALS ANGLES X.X ± 0.25 ± 1° X.XX ± 0.15	<b>APPROVALS</b>		<b>DATE</b>	<b>Amphenol High Speed Interconnects</b> <small>A Division of Amphenol Corp. www.amphenol-highspeed.com</small> <b>TITLE</b>  2XN SFP COMBO WITH LP OPTION
	DRAWN	Chigov Xu	MAR.27, 14	
	DESIGNED	X	X	
	CHECKED	J.SI	MAR.27, 14	
MATERIAL AND FINISH	SEE NOTE		QA APP'D	X
REF.	X	IE APP'D	X	X
CODE IDENT. NO.	03554	DWG APP'D	J.SI	MAR.27, 14
SIZE	A4	DWG. NO.	P-UE86-DX127-X0XX1	
SCALE	2:3	PROJECT	SHEET 1 OF 8	



REVISIONS				
REV.	ECN	DESCRIPTION	DATE	APPROVED
A		PROPOSAL	MAR.27.14	J.SI

SFP COMBO	DIM A	DIM B	DIM C
2X1 SFP	14.00	16.39	16.00
2X2 SFP	28.25	30.64	30.25
2X4 SFP	56.75	60.14	58.75
2X6 SFP	85.25	87.64	87.25
2X8 SFP	113.75	116.14	115.75



RESET FOR LED CLEARANCE

DETAIL N SCALE 2 : 1

UNLESS OTHERWISE SPECIFIED DIMENSIONS ARE IN MILLIMETERS TOLERANCES ARE: DECIMALS ANGLES X.X ± 0.25 ± 1° X.XX ± 0.15		<b>APPROVALS</b>		<b>DATE</b>	
MATERIAL AND FINISH SEE NOTE		DRAWN Chigov Xu		MAR.27.14	
REF. X		DESIGNED X		X	
CODE IDENT. NO. 03554		CHECKED J.SI		MAR.27.14	
		QA APPD X		X	
		IE APPD X		X	
		DWG APPD J.SI		MAR.27.14	

**Amphenol High Speed Interconnects**  
A Division of Amphenol Corp. www.amphenol-highspeed.com

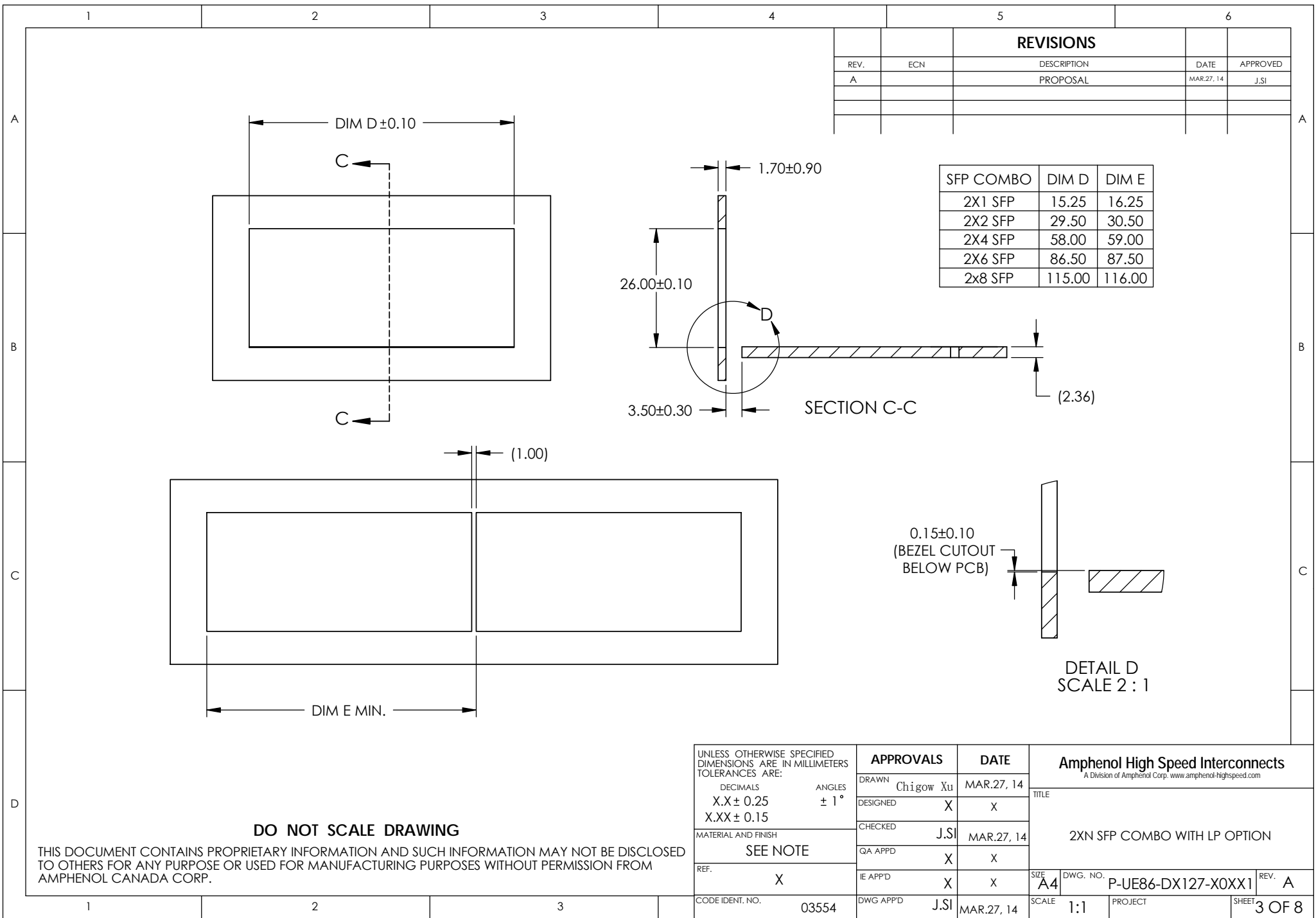
TITLE

2XN SFP COMBO WITH LP OPTION

SIZE A4 DWG. NO. P-UE86-DX127-XOXX1 REV. A

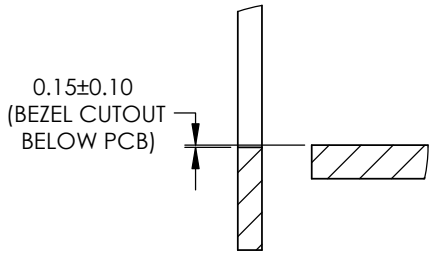
SCALE 1:1 PROJECT SHEET 2 OF 8

**DO NOT SCALE DRAWING**  
THIS DOCUMENT CONTAINS PROPRIETARY INFORMATION AND SUCH INFORMATION MAY NOT BE DISCLOSED TO OTHERS FOR ANY PURPOSE OR USED FOR MANUFACTURING PURPOSES WITHOUT PERMISSION FROM AMPHENOL CANADA CORP.



REVISIONS				
REV.	ECN	DESCRIPTION	DATE	APPROVED
A		PROPOSAL	MAR.27.14	J.SI

SFP COMBO	DIM D	DIM E
2X1 SFP	15.25	16.25
2X2 SFP	29.50	30.50
2X4 SFP	58.00	59.00
2X6 SFP	86.50	87.50
2x8 SFP	115.00	116.00



DETAIL D  
SCALE 2 : 1

UNLESS OTHERWISE SPECIFIED DIMENSIONS ARE IN MILLIMETERS TOLERANCES ARE:		APPROVALS	DATE
DECIMALS	ANGLES	DRAWN Chigow Xu	MAR.27, 14
X.X ± 0.25	± 1°	DESIGNED X	X
X.XX ± 0.15		CHECKED J.SI	MAR.27, 14
MATERIAL AND FINISH		QA APP'D X	X
SEE NOTE		IE APP'D X	X
REF. X		DWG APP'D J.SI	MAR.27, 14
CODE IDENT. NO. 03554			

<b>Amphenol High Speed Interconnects</b> <small>A Division of Amphenol Corp. www.amphenol-highspeed.com</small>			
TITLE			
2XN SFP COMBO WITH LP OPTION			
SIZE A4	DWG. NO. P-UE86-DX127-XOXX1	REV. A	
SCALE 1:1	PROJECT	SHEET 3 OF 8	

**DO NOT SCALE DRAWING**

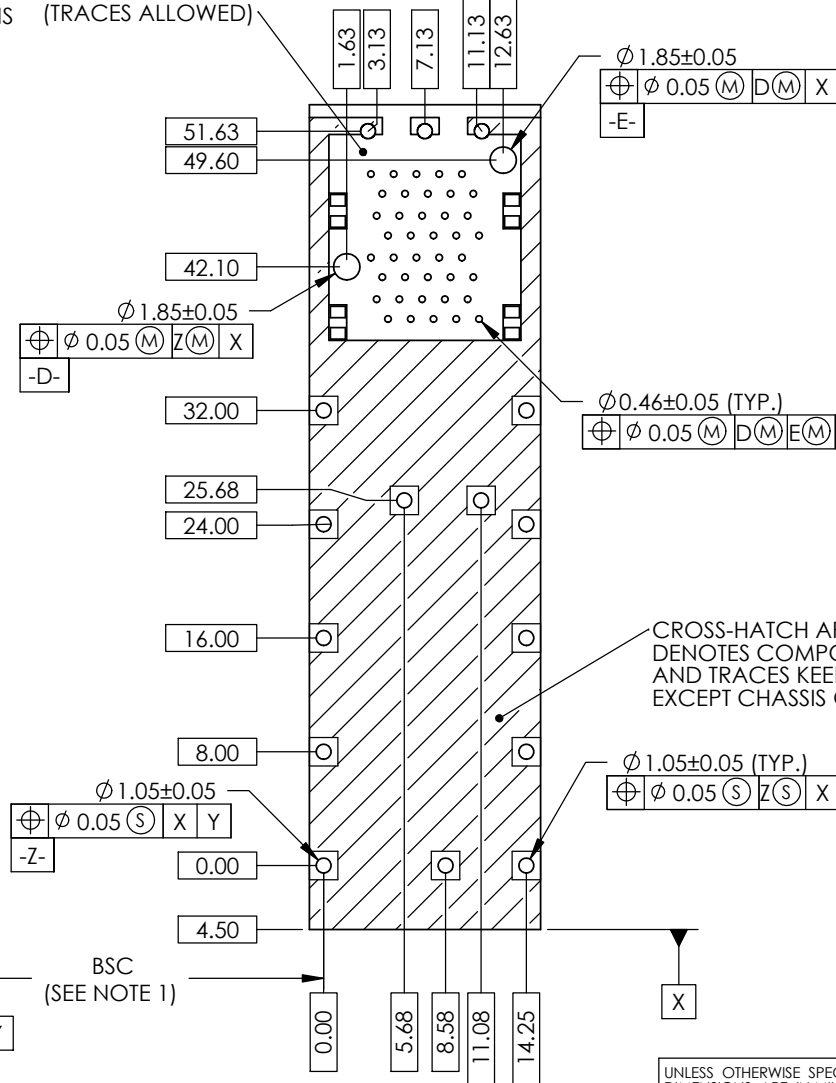
THIS DOCUMENT CONTAINS PROPRIETARY INFORMATION AND SUCH INFORMATION MAY NOT BE DISCLOSED TO OTHERS FOR ANY PURPOSE OR USED FOR MANUFACTURING PURPOSES WITHOUT PERMISSION FROM AMPHENOL CANADA CORP.

NOTES:

1. DATUM AND BASIC DIMENSIONS ESTABLISHED BY CUSTOMER.

2. 1.05 mm DIAMETER HOLES ARE CHASSIS GROUND (16 HOLES).

THIS AREA DENOTES COMPONENTS KEEP OUT (TRACES ALLOWED)



REVISIONS

REV.	ECN	DESCRIPTION	DATE	APPROVED
A		PROPOSAL	MAR.27.14	J.SI

2X1 PCB LAYOUT

DO NOT SCALE DRAWING

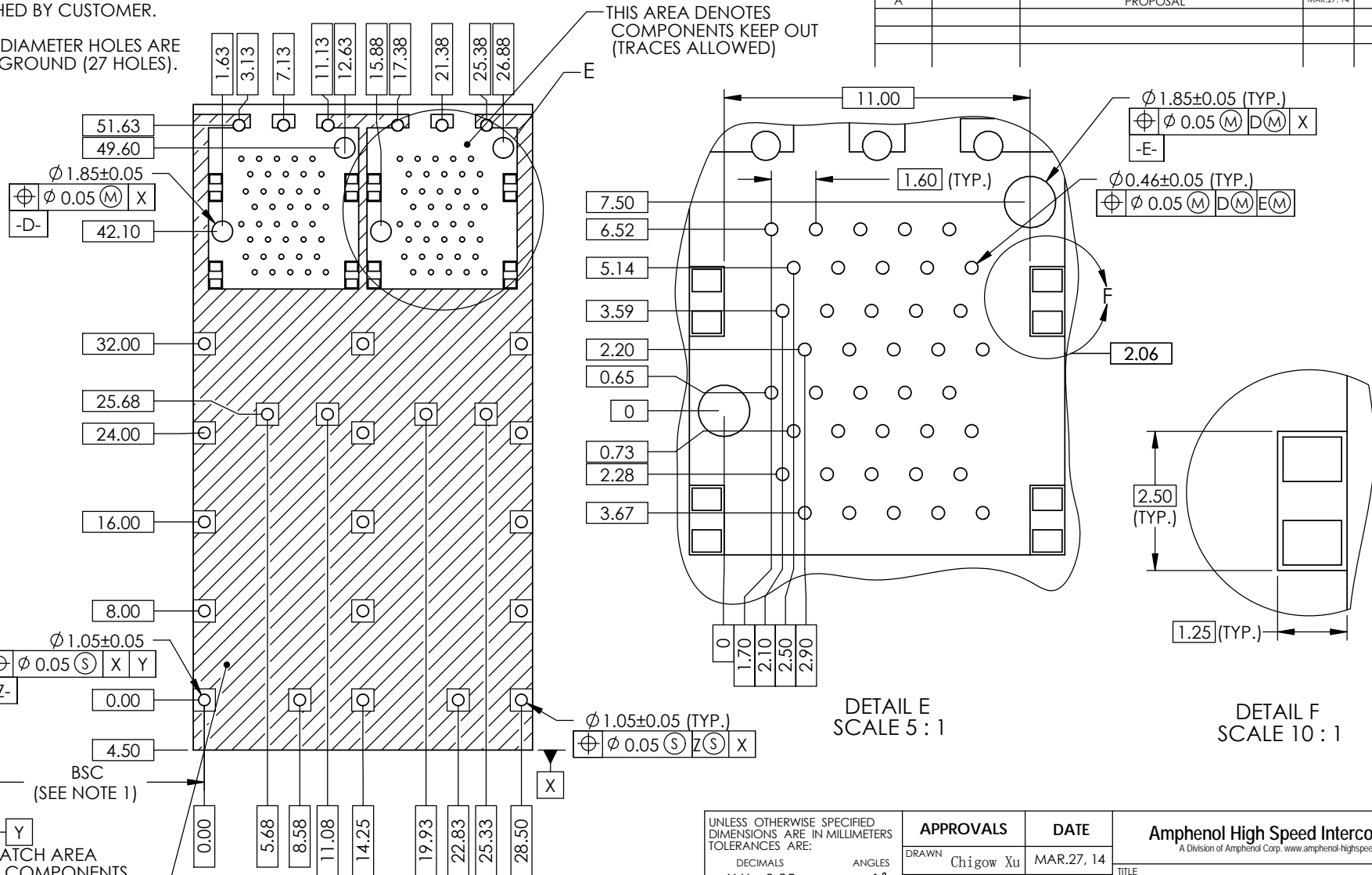
THIS DOCUMENT CONTAINS PROPRIETARY INFORMATION AND SUCH INFORMATION MAY NOT BE DISCLOSED TO OTHERS FOR ANY PURPOSE OR USED FOR MANUFACTURING PURPOSES WITHOUT PERMISSION FROM AMPHENOL CANADA CORP.

UNLESS OTHERWISE SPECIFIED DIMENSIONS ARE IN MILLIMETERS TOLERANCES ARE:		<b>APPROVALS</b>		<b>DATE</b>		<b>Amphenol High Speed Interconnects</b> A Division of Amphenol Corp. www.amphenol-highspeed.com	
DECIMALS	ANGLES	DRAWN	Chigow Xu	MAR.27, 14	TITLE		
X.X ± 0.25	± 1°	DESIGNED	X	X	2XN SFP COMBO WITH LP OPTION		
X.XX ± 0.15		CHECKED	J.SI	MAR.27, 14			
MATERIAL AND FINISH		QA APP'D	X	X			
SEE NOTE		IE APP'D	X	X	SIZE	DWG. NO.	REV.
REF.	X	DWG APP'D	J.SI	MAR.27, 14	A4	P-UE86-DX127-XOXX1	A
CODE IDENT. NO.	03554			SCALE	1:1	PROJECT	SHEET
						4 OF 8	

NOTES:

1. DATUM AND BASIC DIMENSIONS ESTABLISHED BY CUSTOMER.
2. 1.05 mm DIAMETER HOLES ARE CHASSIS GROUND (27 HOLES).

REVISIONS				
REV.	ECN	DESCRIPTION	DATE	APPROVED
A		PROPOSAL	MAR.27.14	J.SI



THIS AREA DENOTES COMPONENTS KEEP OUT (TRACES ALLOWED)

DETAIL E  
SCALE 5 : 1

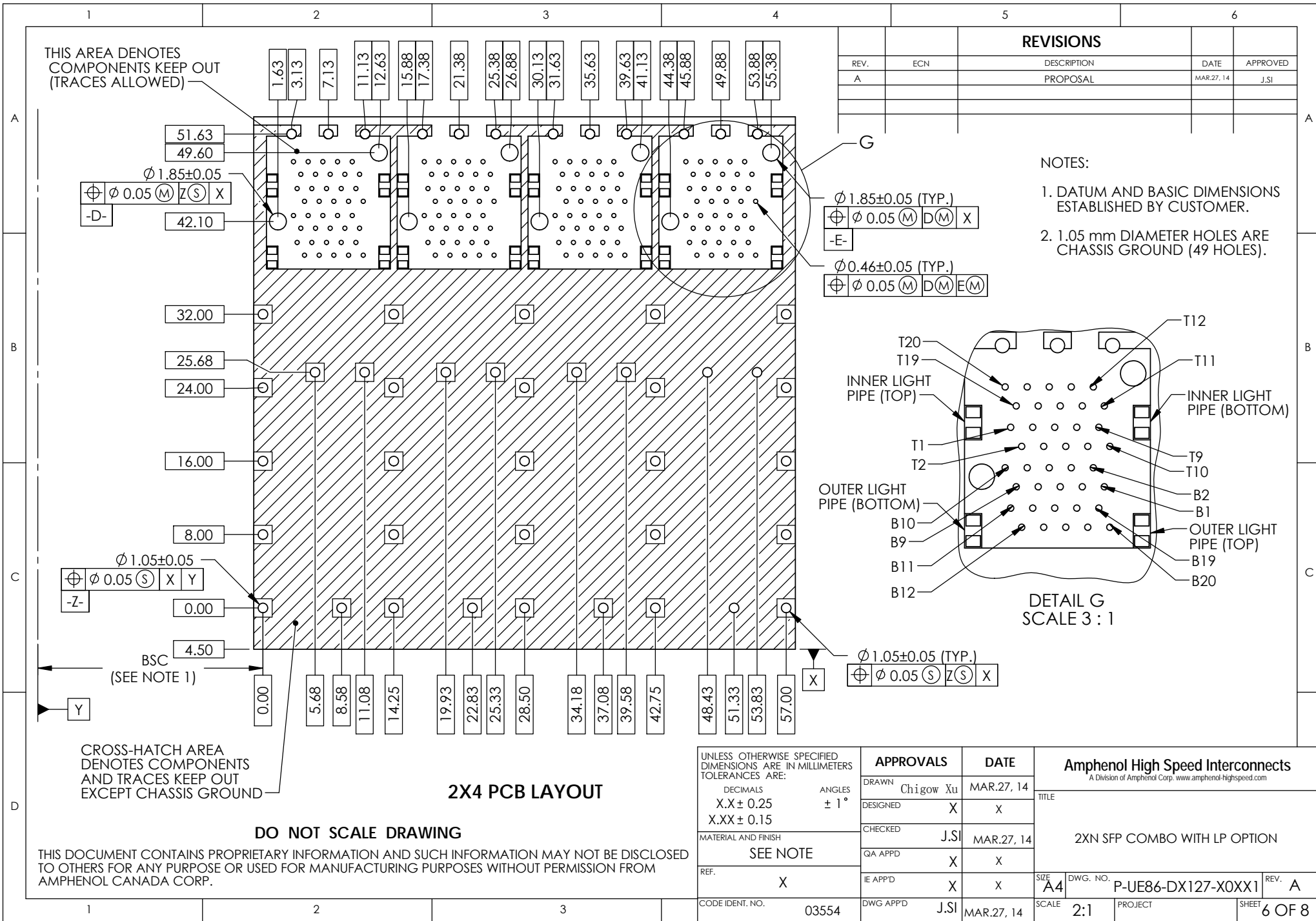
DETAIL F  
SCALE 10 : 1

**DO NOT SCALE DRAWING 2X2 PCB LAYOUT**

CROSS-HATCH AREA DENOTES COMPONENTS AND TRACES KEEP OUT EXCEPT CHASSIS GROUND

THIS DOCUMENT CONTAINS PROPRIETARY INFORMATION AND SUCH INFORMATION MAY NOT BE DISCLOSED TO OTHERS FOR ANY PURPOSE OR USED FOR MANUFACTURING PURPOSES WITHOUT PERMISSION FROM AMPHENOL CANADA CORP.

UNLESS OTHERWISE SPECIFIED DIMENSIONS ARE IN MILLIMETERS TOLERANCES ARE: DECIMALS X.X ± 0.25 X.XX ± 0.15 ANGLES ± 1°	<b>APPROVALS</b>		<b>DATE</b>	<b>Amphenol High Speed Interconnects</b> <small>A Division of Amphenol Corp. www.amphenol-highspeed.com</small> <b>TITLE</b> 2XN SFP COMBO WITH LP OPTION
	DRAWN	Chigow Xu	MAR.27, 14	
	DESIGNED	X	X	
	CHECKED	J.SI	MAR.27, 14	
MATERIAL AND FINISH	SEE NOTE		QA APPD	X
REF.	X	IE APPD	X	X
CODE IDENT. NO.	03554	DWG APPD	J.SI	MAR.27, 14
SIZE	A4	DWG. NO.	P-UE86-DX127-XOXX1	REV. A
SCALE	2:1	PROJECT		SHEET 5 OF 8



THIS AREA DENOTES COMPONENTS KEEP OUT (TRACES ALLOWED)

**REVISIONS**

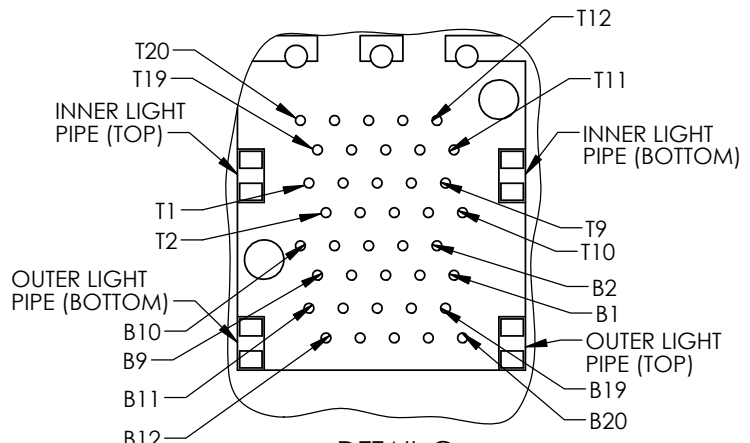
REV.	ECN	DESCRIPTION	DATE	APPROVED
A		PROPOSAL	MAR.27.14	J.SI

**NOTES:**

- DATUM AND BASIC DIMENSIONS ESTABLISHED BY CUSTOMER.
- 1.05 mm DIAMETER HOLES ARE CHASSIS GROUND (49 HOLES).

$\varnothing 1.85 \pm 0.05$  (TYP.)  
 $\varnothing 0.05$  (M) (D) (M) (X)  
 -E-

$\varnothing 0.46 \pm 0.05$  (TYP.)  
 $\varnothing 0.05$  (M) (D) (M) (E) (M)



DETAIL G  
SCALE 3:1

**2X4 PCB LAYOUT**

**DO NOT SCALE DRAWING**

THIS DOCUMENT CONTAINS PROPRIETARY INFORMATION AND SUCH INFORMATION MAY NOT BE DISCLOSED TO OTHERS FOR ANY PURPOSE OR USED FOR MANUFACTURING PURPOSES WITHOUT PERMISSION FROM AMPHENOL CANADA CORP.

UNLESS OTHERWISE SPECIFIED DIMENSIONS ARE IN MILLIMETERS TOLERANCES ARE:

DECIMALS ANGLES  
 X.X ± 0.25 ± 1°  
 X.XX ± 0.15

MATERIAL AND FINISH  
 SEE NOTE

REF. X

CODE IDENT. NO. 03554

APPROVALS		DATE
DRAWN	Chigow Xu	MAR.27.14
DESIGNED	X	X
CHECKED	J.SI	MAR.27.14
QA APPD	X	X
IE APPD	X	X
DWG APPD	J.SI	MAR.27.14

<b>Amphenol High Speed Interconnects</b> A Division of Amphenol Corp. www.amphenol-highspeed.com	
TITLE	
2XN SFP COMBO WITH LP OPTION	
SIZE A4	DWG. NO. P-UE86-DX127-XOXX1
SCALE 2:1	PROJECT
REV. A	SHEET 6 OF 8

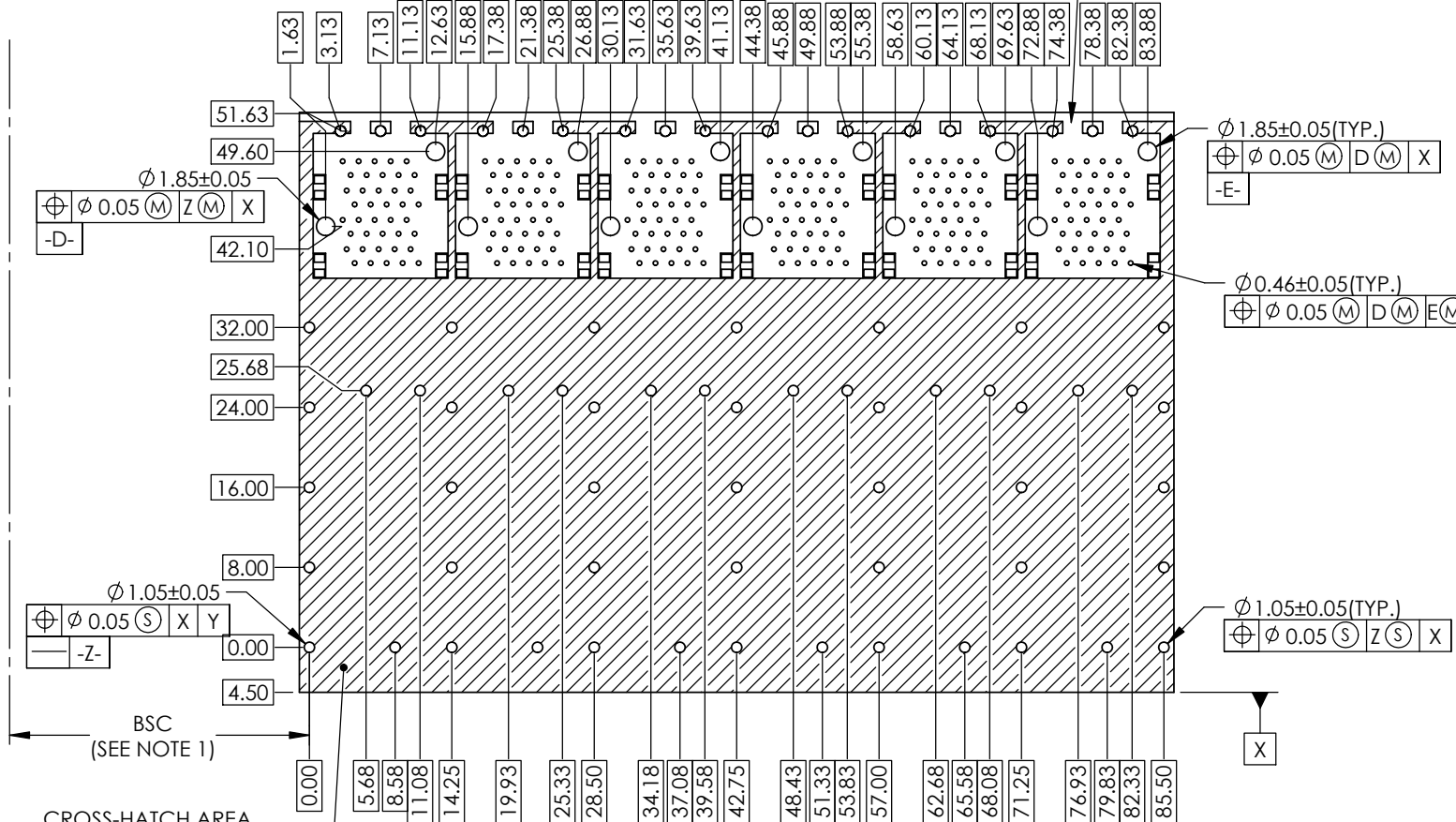
NOTES:

1. DATUM AND BASIC DIMENSIONS ESTABLISHED BY CUSTOMER.
2. 1.05 mm DIAMETER HOLES ARE CHASSIS GROUND (71 HOLES).

THIS AREA DENOTES COMPONENTS KEEP OUT (TRACES ALLOWED)

REVISIONS

REV.	ECN	DESCRIPTION	DATE	APPROVED
A		PROPOSAL	MAR.27.14	J.SI



CROSS-HATCH AREA DENOTES COMPONENTS AND TRACES KEEP OUT EXCEPT CHASSIS GROUND

2X6 PCB LAYOUT

DO NOT SCALE DRAWING

THIS DOCUMENT CONTAINS PROPRIETARY INFORMATION AND SUCH INFORMATION MAY NOT BE DISCLOSED TO OTHERS FOR ANY PURPOSE OR USED FOR MANUFACTURING PURPOSES WITHOUT PERMISSION FROM AMPHENOL CANADA CORP.

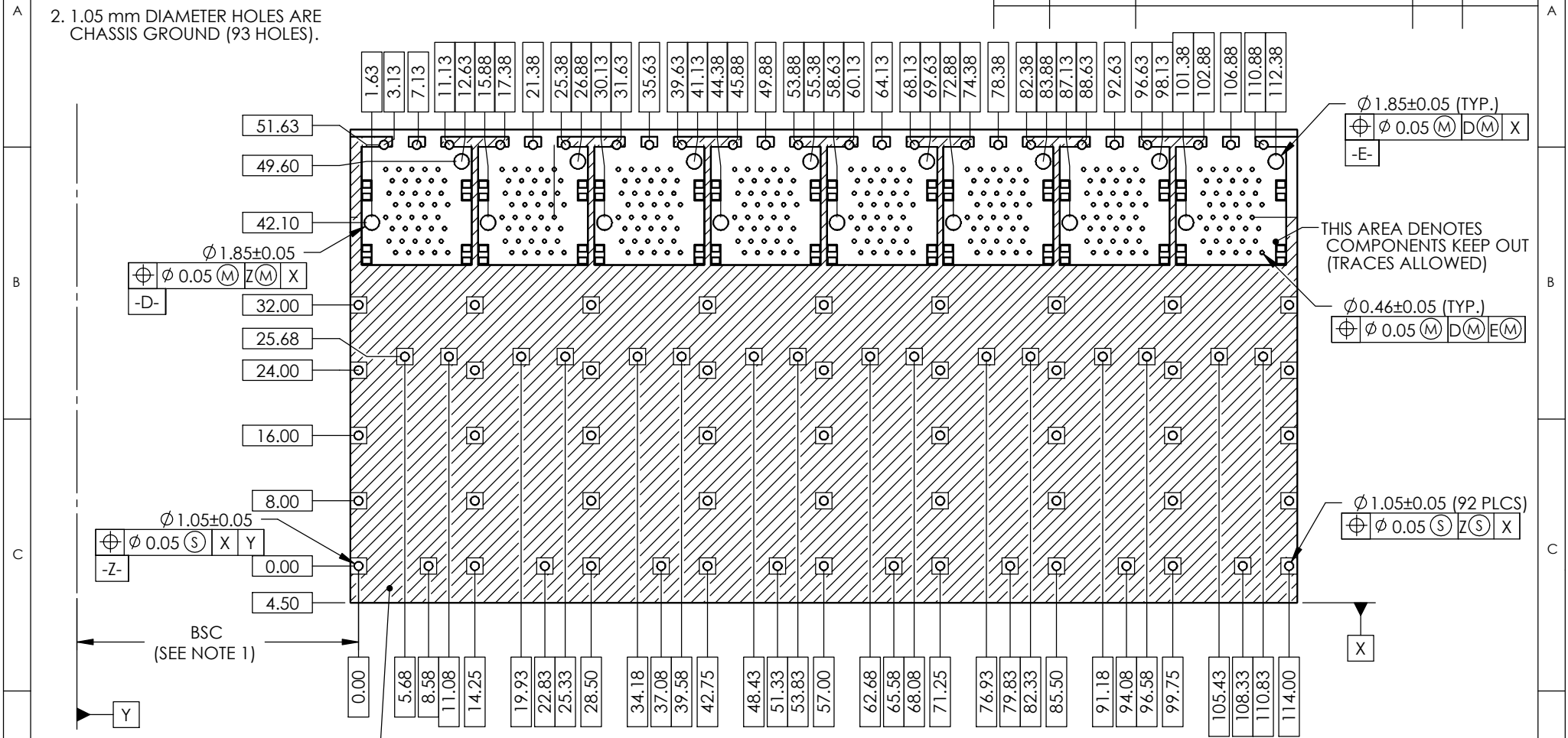
UNLESS OTHERWISE SPECIFIED DIMENSIONS ARE IN MILLIMETERS TOLERANCES ARE:		APPROVALS		DATE		Amphenol High Speed Interconnects A Division of Amphenol Corp. www.amphenol-highspeed.com	
DECIMALS	ANGLES	DRAWN	Chigow Xu	MAR.27.14	TITLE		
X.X ± 0.25	± 1°	DESIGNED	X	X	2XN SFP COMBO WITH LP OPTION		
X.XX ± 0.15		CHECKED	J.SI	MAR.27.14			
MATERIAL AND FINISH		QA APPD	X	X			
SEE NOTE		IE APPD	X	X			
REF.	X	DWG APPD	J.SI	MAR.27.14	SIZE	DWG. NO.	REV.
CODE IDENT. NO.	03554				A4	P-UE86-DX127-XOXX1	A
		SCALE	1:2	PROJECT	SHEET		7 OF 8

NOTES:

- DATUM AND BASIC DIMENSIONS ESTABLISHED BY CUSTOMER.
- 1.05 mm DIAMETER HOLES ARE CHASSIS GROUND (93 HOLES).

REVISIONS

REV.	ECN	DESCRIPTION	DATE	APPROVED
A		PROPOSAL	MAR.27.14	J.SI



CROSS-HATCH AREA DENOTES COMPONENTS AND TRACES KEEP OUT EXCEPT CHASSIS GROUND

2X8 PCB LAYOUT

DO NOT SCALE DRAWING

THIS DOCUMENT CONTAINS PROPRIETARY INFORMATION AND SUCH INFORMATION MAY NOT BE DISCLOSED TO OTHERS FOR ANY PURPOSE OR USED FOR MANUFACTURING PURPOSES WITHOUT PERMISSION FROM AMPHENOL CANADA CORP.

UNLESS OTHERWISE SPECIFIED DIMENSIONS ARE IN MILLIMETERS TOLERANCES ARE: DECIMALS X.X ± 0.25 X.XX ± 0.15 ANGLES ± 1°		<b>APPROVALS</b>		<b>DATE</b>		<b>Amphenol High Speed Interconnects</b> A Division of Amphenol Corp. www.amphenol-highspeed.com	
MATERIAL AND FINISH SEE NOTE		DRAWN Chigow Xu	DESIGNED X	MAR.27, 14	X		
REF. X		CHECKED J.SI	QA APPD X	MAR.27, 14	X	2XN SFP COMBO WITH LP OPTION	
CODE IDENT. NO. 03554		IE APPD X	DWG APPD J.SI	MAR.27, 14	X	SIZE A4	DWG. NO. P-UE86-DX127-XOXX1
				SCALE 1:1	PROJECT	SHEET 8 OF 8	REV. A



Компания «Life Electronics» занимается поставками электронных компонентов импортного и отечественного производства от производителей и со складов крупных дистрибьюторов Европы, Америки и Азии.

С конца 2013 года компания активно расширяет линейку поставок компонентов по направлению коаксиальный кабель, кварцевые генераторы и конденсаторы (керамические, пленочные, электролитические), за счёт заключения дистрибьюторских договоров

Мы предлагаем:

- Конкурентоспособные цены и скидки постоянным клиентам.
- Специальные условия для постоянных клиентов.
- Подбор аналогов.
- Поставку компонентов в любых объемах, удовлетворяющих вашим потребностям.
- Приемлемые сроки поставки, возможна ускоренная поставка.
- Доставку товара в любую точку России и стран СНГ.
- Комплексную поставку.
- Работу по проектам и поставку образцов.
- Формирование склада под заказчика.
- Сертификаты соответствия на поставляемую продукцию (по желанию клиента).
- Тестирование поставляемой продукции.
- Поставку компонентов, требующих военную и космическую приемку.
- Входной контроль качества.
- Наличие сертификата ISO.

В составе нашей компании организован Конструкторский отдел, призванный помогать разработчикам, и инженерам.

Конструкторский отдел помогает осуществить:

- Регистрацию проекта у производителя компонентов.
- Техническую поддержку проекта.
- Защиту от снятия компонента с производства.
- Оценку стоимости проекта по компонентам.
- Изготовление тестовой платы монтаж и пусконаладочные работы.



Тел: +7 (812) 336 43 04 (многоканальный)

Email: [org@lifeelectronics.ru](mailto:org@lifeelectronics.ru)