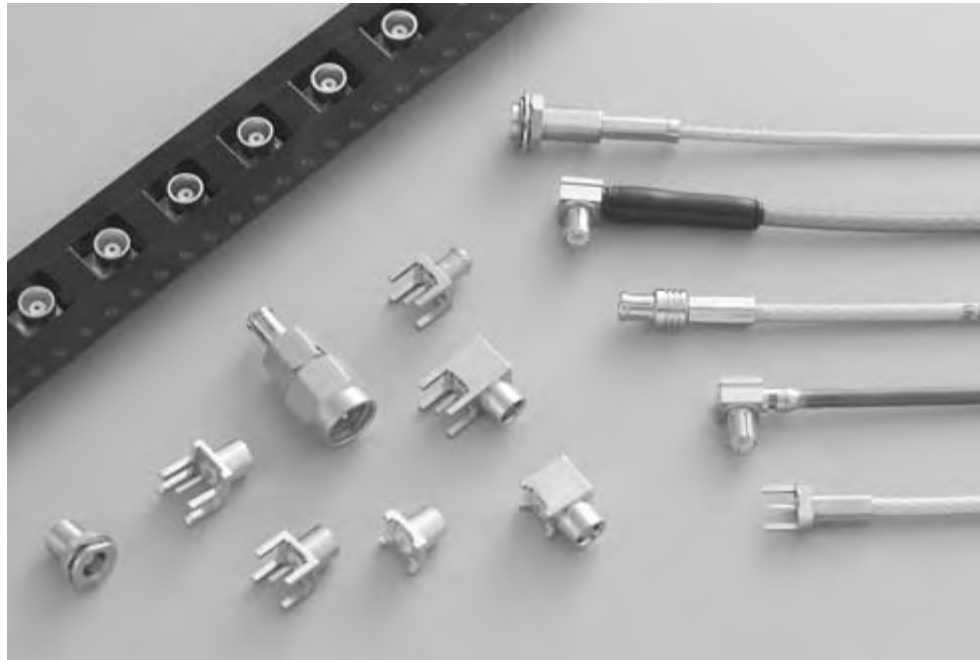


MCX Connectors

Product Facts

- Snap-on interface facilitates assembly
- Conforms to CECC interface specifications for MCX
- 30% smaller than SMB connectors
- Surface mount tape and reel for high volume
- 50 and 75 ohm versions available



Between Series Adapters

For MCX Between Series Adapters, see pages 251-260.

Tyco Electronics MCX microminiature snap-on connectors offer an excellent blend of size, durability and performance for emerging applications in GPS, automotive and wireless communications. MCX connectors are 30% smaller than traditional snap-on SMB connectors, offering greater packaging density and weight reduction. MCX connectors are mechanically robust with beryllium copper spring fingers rated at a minimum of 500 mating cycles. The snap-on interface facilitates assembly, eliminating the need for a threaded connection, and

ensuring full engagement. The forces to engage and disengage have been optimized to ensure ease of mating as well as to prevent damage to PCB solder connections. MCX connectors are designed for broad band performance, DC-6 GHz, and can be utilized for future system upgrades without concerns for performance degradation. Tyco Electronics MCX connectors are fully mateable with standard MCX connectors and conform to the CECC interface specifications.

MCX connectors are available in a broad range of

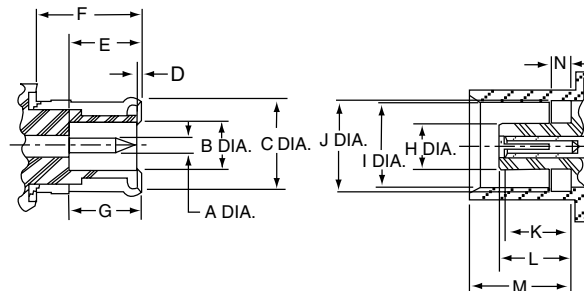
standard configurations for commercial applications. Tape and reel packaging for MCX surface mount straight and right-angle PCB receptacles is available to facilitate high volume pick and place manufacturing. MCX surface mount connectors are designed to withstand infrared reflow, convection and vapor phase soldering and provide a .254 [.010] standoff for optimal board cleaning. MCX plug and jack PCB receptacles also offer a direct board to board solution providing a nominal 7.11 [0.28] separation.

MCX Connectors (Continued)

Specifications

| General | | CECC 22220 PARA |
|---------------------------------|--------|--|
| Materials | — | Brass alloys UNS C36000 (ASTM-B16) or C38500 per QQ-B626, Beryllium copper per ASTM B-196, PTFE fluorocarbon per ASTM-D-1710 |
| Finish | — | Center Contacts: Gold plated (ASTM-B488) over nickel plate (QQ-N-290) |
| | — | Outer Contacts: Gold plated (ASTM-B488) over nickel plate (OO-N-290) |
| | — | Housings: Nickel plated (QQ-N-290), tin (ASTM-B488) or Gold plated (ASTM-B488) |
| | — | All other metal parts shall be furnished so as to provide a connector which meets corrosion requirements of CECC 22220 PARA 4.6.10 |
| Design | — | The design shall be such that the outline and interface dimensions shown in this catalog and the requirements of CECC 22220 PARA are met |
| Electrical | | CECC 22220 PARA (General requirements performance may vary by cable) |
| Frequency | — | dc - 6 GHz |
| Nominal Impedance | — | 50 ohms |
| Voltage Rating | — | 335 Volts (VRMS Maximum) @ Sea Level |
| VSWR | 4.4.1 | 1.25:1 Maximum @ 4 GHz |
| | — | 1.35:1 Maximum @ 6 GHz |
| Insulation Resistance | 4.4.4 | 10,000 Megohms Minimum |
| Insertion Loss | — | .1dB Maximum/1000 MHz |
| Dielectric Withstanding Voltage | 4.4.5 | 1000 Volts (VRMS Minimum) @ Sea Level |
| Contact Resistance | | |
| Center Contact | 4.4.2 | 5.0 Milliohms Maximum |
| Outer Contact | 4.4.3 | 1.0 Milliohms Maximum |
| Corona 70,000 ft. | — | 250 Volts (VRMS Minimum) @ MHz |
| RF High Potential @ Sea Level | — | 670 Volts (VRMS Minimum) @ MHz |
| Contact Current | — | 1.5 ADC Max |
| Mechanical | | CECC 22220 PARA |
| Force to Engage | 4.5.4 | 15.5 N [3.4 lbs.] Maximum |
| Force to Disengage | — | 8 – 20 N [1.8 – 4.5 lbs.] |
| Contact Captivation | 4.5.2 | Designed to maintain MCX interface when mating 10 N [2.2 lbs.] axial |
| Connector Durability | 4.7.1 | 500 insertion and withdrawal cycles |
| Environmental | | CECC 22220 PARA |
| Temperature Rating | — | -65°C + 165°C |
| Vibration | 4.6.3 | See CECC 22220 |
| Moisture Resistance | 4.6.4 | See CECC 22220 |
| Corrosion | 4.6.10 | See CECC 22220 |
| Thermal Shock | 4.6.7 | See CECC 22220 |

Meets or exceeds requirements of CECC 22220. Tyco Electronics has design control and all data contained herein is subject to change without notice. Contact Tyco Electronics for specifications on other connector types.



Plug

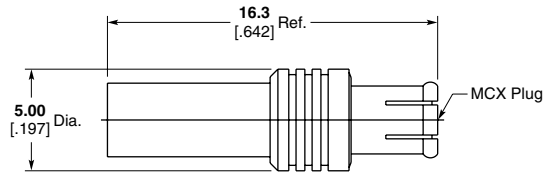
| Letter | Minimum | Maximum |
|--------|--------------|--------------|
| A | 0.48 [.0189] | 0.53 [.0208] |
| B | 2.00 [.0788] | — |
| C | — | 3.8 [.148] |
| D | 0.00 [.000] | 0.30 [.0118] |
| E | 2.80 [.111] | 3.20 [.125] |
| F | 4.15 [.164] | — |
| G | 2.80 [.111] | — |

Jack

| Letter | Minimum | Maximum |
|--------|--------------|--------------|
| H | — | 1.98 [.077] |
| I | 3.42 [.135] | 3.48 [.137] |
| J | 3.60 [.142] | 3.75 [.147] |
| K | 2.30 [.091] | 2.80 [.110] |
| L | 2.60 [.103] | 2.80 [.110] |
| M | 4.00 [.158] | 4.12 [.162] |
| N | 0.75 [.0296] | 0.85 [.0334] |

MCX Connectors (Continued)

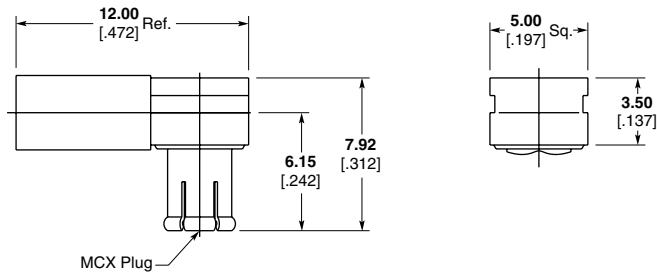
Straight Cable Plug, Crimp



| Cable | Plating | Part No. |
|------------------------|---------|------------------|
| RG 178/U, 196/U | Nickel | 1060869-1 |
| RG 174/U, 188/U, 316/U | Nickel | 1060872-1 |
| | Gold | 1060871-1 |
| RD-316 | Nickel | 1060875-1 |
| | Gold | 1060875-2 |

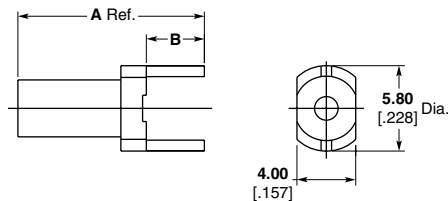
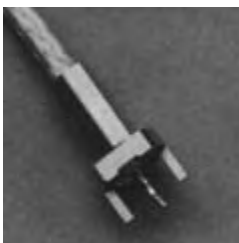
Note: For full crimp attachment consult Tyco Electronics at the numbers listed below.

Right-Angle Cable Plug, Crimp



| Cable | Plating | Part No. |
|---------------------------------------|---------|------------------|
| RG 178/U, 196/U | Nickel | 1329293-1 |
| RG 188/U, 316/U RG 179/U, RG 187/U | Nickel | 1330723-1 |
| RD-316 | Nickel | 1363301-1 |
| | Gold | 1363301-2 |

Straight Cable Terminal, PC Board, Without Center Contact

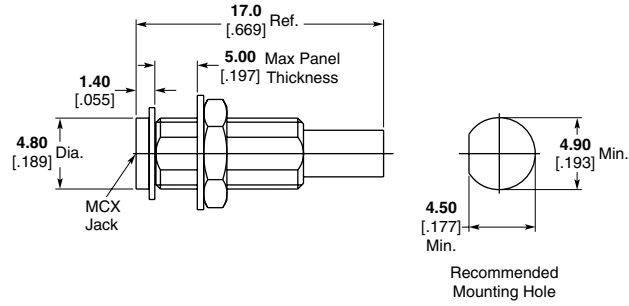


| Cable | Dim. A | Dim. B | Plating | Part No. |
|---------------------------|--------------|-------------|---------|------------------|
| RG 174/U, 188/U, 316/U | 11.76 | 3.94 | Nickel | 1060811-1 |
| | .463 | .155 | Gold | 1060811-2 |
| | 10.74 | 2.92 | Gold | 1060813-2 |
| | .423 | .115 | | |

Note: Part Numbers are RoHS compliant except: ♦ Indicates non-RoHS compliant.

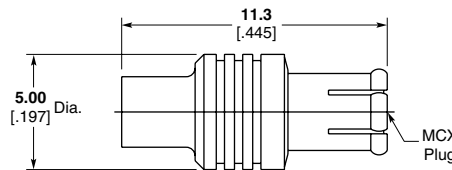
MCX Connectors (Continued)

Bulkhead Cable Jack



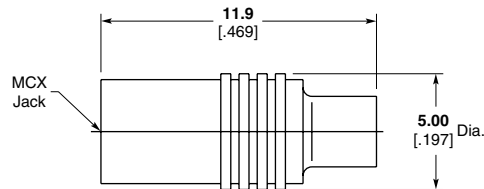
| Cable | Plating | Part No. |
|--------------------|---------|------------------|
| RG 188/U, RG 316/U | Nickel | 1060883-1 |

Straight Cable Plug, Direct Solder Attachment For Semi-Rigid Cable



| Cable | Plating | Part No. |
|------------------|---------|------------------|
| RG 405/U [0.085] | Gold | 1060772-1 |
| .047 | Gold | 1060772-2 |

Straight Cable Jack, Direct Solder Attachment For Semi-Rigid Cable

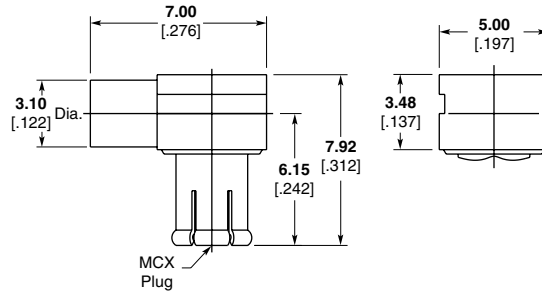


| Cable | Plating | Part No. |
|------------------|---------|------------------|
| RG 405/U [0.085] | Gold | 1060774-1 |
| .047 | Gold | 1060774-2 |

Note: Part Numbers are RoHS compliant except: ♦ Indicates non-RoHS compliant.

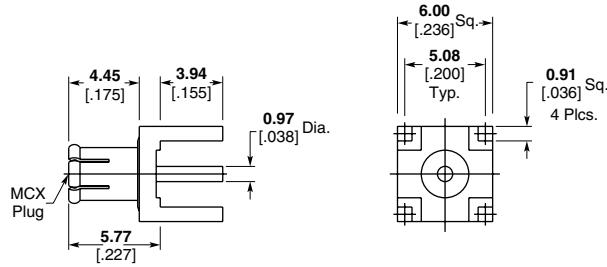
MCX Connectors (Continued)

**Right-Angle Plug Receptacle,
Direct Solder Attachment
For Semi-Rigid Cable**



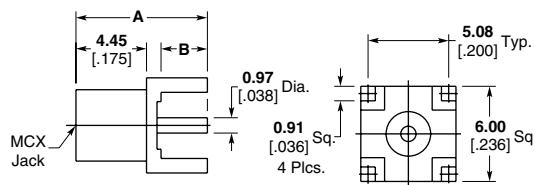
| Cable | Plating | Part No. |
|----------|---------|------------------|
| RG 405/U | Gold | 1060787-1 |

**Vertical Plug Receptacle,
PC Board**



| Plating | Part No. |
|---------|------------------|
| Nickel | 1061015-1 |
| Gold | 1085221-1 |

**Vertical Jack Receptacle,
PC Board**

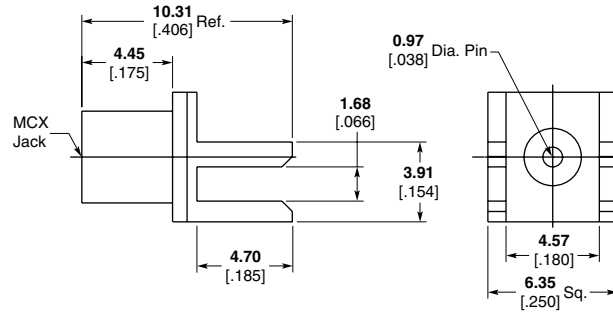


| Dim. A | Dim. B | Plating | Part No. |
|-------------|-------------|---------|------------------|
| 8.28 | 2.92 | Nickel | 1060985-1 |
| .326 | .115 | Gold | 1060984-1 |
| 9.30 | 3.94 | Nickel | 1060989-1 |
| .366 | .155 | Gold | 1330126-1 |
| 7.09 | 1.73 | Nickel | 1060996-1 |
| .279 | .068 | Gold | 1060995-1 |

Note: Part Numbers are RoHS compliant except: ♦ Indicates non-RoHS compliant.

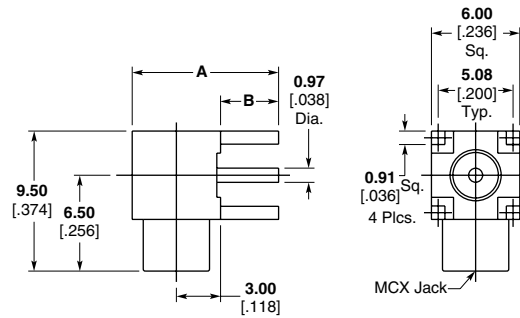
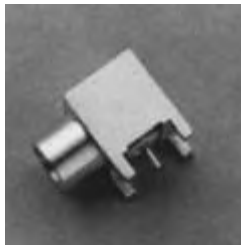
MCX Connectors (Continued)

**Vertical End Launch,
PC Board**



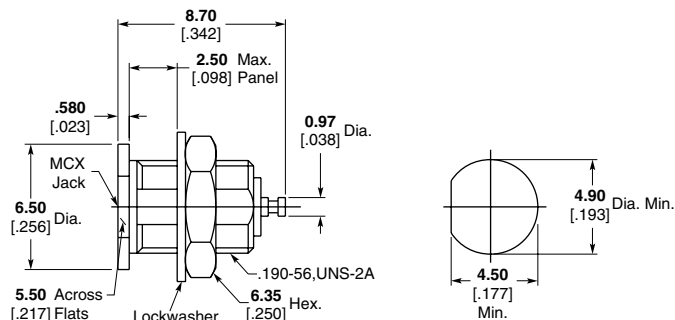
| Plating | Part No. |
|---------|------------------|
| Tin | 1061007-1 |

**Right-Angle Jack
Receptacle, PC Board**



| Dim. A | Dim. B | Plating | Part No. |
|-----------------------|-----------------------|---------|------------------|
| 9.93 [.391] | 3.94 [.155] | Nickel | 1061023-1 |
| | | Gold | 1061022-1 |
| 7.72 [.304] | 1.73 [.068] | Nickel | 1061027-1 |
| | | Gold | 1061026-1 |
| 8.92 [.351] | 2.92 [.115] | Nickel | 1061030-1 |
| | | Gold | 1061029-1 |

**Jack Receptacle,
Bulkhead Feedthrough**



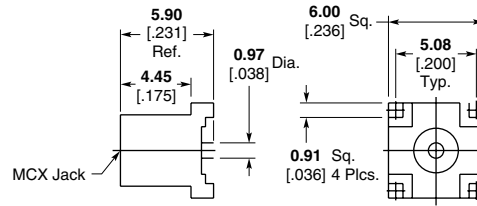
Recommended Mounting Hole

| Plating | Part No. |
|---------|------------------|
| Nickel | 1060960-1 |
| Gold | 1060959-1 |

Note: Part Numbers are RoHS compliant except: ♦ Indicates non-RoHS compliant.

MCX Connectors (Continued)

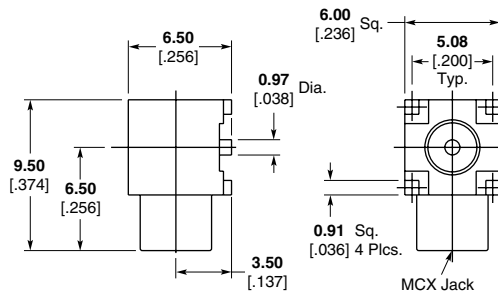
**Vertical Jack Receptacle,
Surface Mount**



| Plating | Part No. |
|---------|------------------------|
| Tin | 6061002-1 |
| | 6061092-1 ¹ |

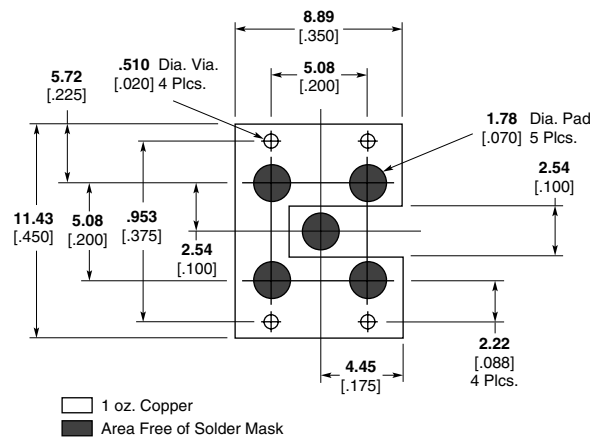
¹Tape and Reel packaging. 900 connectors per reel (carrier width 16mm, carrier pitch 12mm).

**Right-Angle Jack Receptacle,
Surface Mount**



| Plating | Part No. |
|---------|------------------------|
| Tin | 6061035-1 |
| Tin | 6061094-1 ¹ |

¹Tape and reel packaging. 750 connectors per reel (carrier width 24mm carrier pitch 12mm).



Notes:

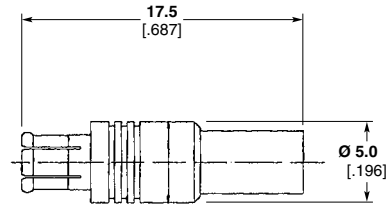
1. Printed circuit board material: glass epoxy FR-4 or similar; relative permittivity: 4.8, 1 oz. copper clad both sides.
2. These dimensions valid for 1.58 [0.062] board thickness.
3. Decimal inch equivalents are shown in parentheses for general information only.

Recommended Mounting Pattern for Microstrip Line

Note: Part Numbers are RoHS compliant except: ♦ Indicates non-RoHS compliant.

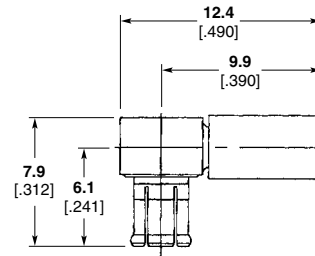
MCX Connectors (Continued)

**Straight Cable Plug,
Crimp, 75 Ohm**



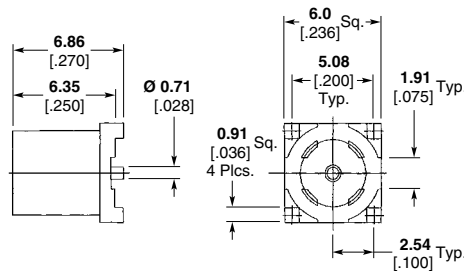
| Cable | Plating | Part No. |
|----------|---------|-----------|
| RG 179/U | Nickel | 1362990-1 |

**Right-Angle Cable Plug,
Crimp, 75 Ohm**



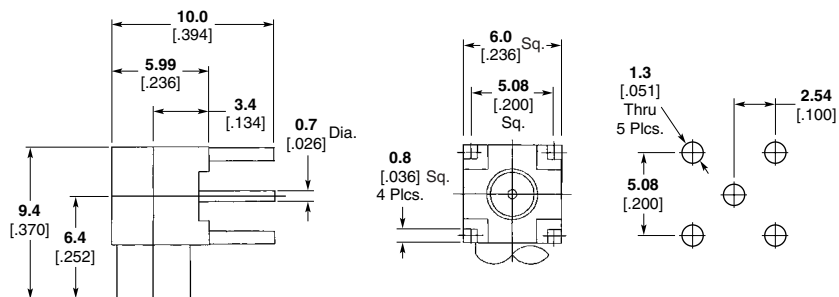
| Cable | Plating | Part No. |
|----------|---------|-----------|
| RG 179/U | Nickel | 1362991-1 |

**Vertical Plug, PC Board,
75 Ohm**



| Plating | Part No. |
|---------|-----------|
| Nickel | 1361169-1 |

**Vertical Jack, PC Board,
75 Ohm**



| Plating | Part No. |
|---------|-----------|
| Gold | 1363106-1 |

Note: Part Numbers are RoHS compliant except: ♦ Indicates non-RoHS compliant.

Компания «Life Electronics» занимается поставками электронных компонентов импортного и отечественного производства от производителей и со складов крупных дистрибьюторов Европы, Америки и Азии.

С конца 2013 года компания активно расширяет линейку поставок компонентов по направлению коаксиальный кабель, кварцевые генераторы и конденсаторы (керамические, пленочные, электролитические), за счёт заключения дистрибьюторских договоров

Мы предлагаем:

- Конкурентоспособные цены и скидки постоянным клиентам.
- Специальные условия для постоянных клиентов.
- Подбор аналогов.
- Поставку компонентов в любых объемах, удовлетворяющих вашим потребностям.
- Приемлемые сроки поставки, возможна ускоренная поставка.
- Доставку товара в любую точку России и стран СНГ.
- Комплексную поставку.
- Работу по проектам и поставку образцов.
- Формирование склада под заказчика.
- Сертификаты соответствия на поставляемую продукцию (по желанию клиента).
- Тестирование поставляемой продукции.
- Поставку компонентов, требующих военную и космическую приемку.
- Входной контроль качества.
- Наличие сертификата ISO.

В составе нашей компании организован Конструкторский отдел, призванный помогать разработчикам, и инженерам.

Конструкторский отдел помогает осуществить:

- Регистрацию проекта у производителя компонентов.
- Техническую поддержку проекта.
- Защиту от снятия компонента с производства.
- Оценку стоимости проекта по компонентам.
- Изготовление тестовой платы монтаж и пусконаладочные работы.



Тел: +7 (812) 336 43 04 (многоканальный)

Email: org@lifeelectronics.ru