

Features

- Ø 0.500 mm active area
- Low noise
- High gain
- Long term stability

Description

The AD500-9-400M-TO5 is an Avalanche Photodiode Amplifier Hybrid containing a 0.196 mm² active area APD chip integrated with an internal transimpedance amplifier. Hermetically packaged in a TO-5 with a borosilicate glass window cap.

Applications

- Lidar
- Analytical instruments
- Medical equipment

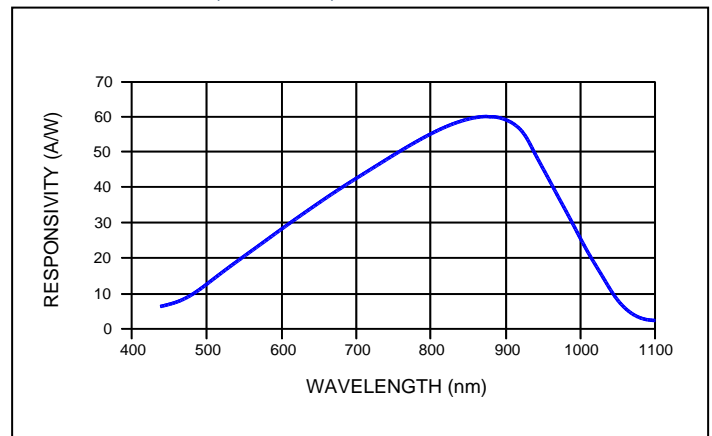
RoHS

2011/65/EU

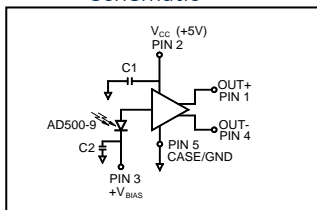
Absolute maximum ratings

Symbol	Parameter	Min	Max	Unit
T _{STG}	Storage Temp	-55	+125	°C
T _{OP}	Operating Temp	0	+60	°C
T _{SOLDERING}	Soldering Temp	-	+240	°C
P	Power Dissipation	-	360	mW
V _{CC}	Single Supply Voltage	+3.0	+5.5	V
I _{CC}	Supply Current	-	63	mA

Spectral response @ M = 100



Schematic



Electro-optical characteristics @ 23° C (V_{CC} = single supply +3.3V, R_L = 100Ω unless otherwise specified)

Symbol	Characteristic	Test conditions	Min	Typ	Max	Unit
f _{-3dB}	Frequency Response	-3dB @ 905 nm	---	400	---	MHz
S	Sensitivity*	λ = 905 nm; M = 100	---	145	---	mV/μW
I _{CC}	Supply Current	Dark state	---	34	63	mA

* Sensitivity = APD responsivity (0.58 A/W X 100 gain) x TIA gain (2.5K)

These devices are sensitive to electrostatic discharge. Please use ESD precautions when handling.

Avalanche photodiode data @ 23 °C

Symbol	Characteristic	Test conditions	Min	Typ	Max	Unit
I_D	Dark Current	M = 100 (see note 1)	---	0.8	5.0	nA
C	Capacitance	M = 100 (see note 1)	---	1.2	---	pF
V_{BR}	Breakdown Voltage	$I_D = 2 \mu A$	160	---	200	V
	Temperature Coefficient of V_{BR}		1.25	---	1.55	V/K
	Responsivity	M = 100; = 0 V; $\lambda = 905 \text{ nm}$	52	58	60	A/W
Δf_{3dB}	Bandwidth	-3dB	---	0.5	---	GHz
t_r	Rise Time	M = 100	---	0.55	---	ns
	Optimum Gain		50	60	---	
	"Excess Noise" factor	M = 100	---	2.5	---	
	"Excess Noise" index	M = 100	---	0.2	---	
	Noise Current	M = 100	---	1.0	---	pA/Hz ^{1/2}
	Max Gain		200	---	---	
NEP	Noise Equivalent Power	M = 100; $\lambda = 905 \text{ nm}$	---	2.0×10^{-14}	---	W/Hz ^{1/2}

Note 1: Measurement conditions: Setup of photo current 1 nA at M = 1 and irradiated by a 880 nm, 80 nm bandwidth LED. Increase the photo current up to 100 nA, (M = 100) by internal multiplication due to an increasing bias voltage.

Transimpedance Amplifier data @ 25 °C

($V_{CC} = +3.0 \text{ V}$ to 5.5 V , $T_A = 0^\circ\text{C}$ to 70°C , 100Ω load between OUT+ and OUT-. Typical values are at $T_A = 25^\circ\text{C}$, $V_{CC} = +3.3 \text{ V}$)

Parameter	Test conditions	Min	Typ	Max	Units
Supply Voltage		3	5	5.5	V
Supply Current		---	34	63	mA
Transimpedance	Differential, measured with $40 \mu A$ p-p signal	2.10	2.75	3.40	k Ω
Output impedance	Single ended per side	48	50	52	Ω
Maximum Differential Output Voltage	Input = 2 mA p-p with 100Ω differential termination	220	380	575	mV p-p
AC Input Overload		2	---	---	mA p-p
DC Input Overload		1	---	---	mA
Input Referred RMS Noise	TO-5 package, see note 3	---	490	668	nA
Input Referred Noise Density	See note 3	---	11	---	pA/Hz ^{1/2}
Small signal bandwidth	Source capacitance = 0.85 pF , see note 2	1.525	2.00	---	GHz
Low Frequency Cutoff	-3 dB, input < $20 \mu A$ DC	---	30	---	kHz
Transimpedance Linear Range	Peak to peak $0.95 < \text{linearity} < 1.05$	40	---	---	μA p-p
Power Supply Rejection Ratio (PSRR)	Output referred, $f < 2 \text{ MHz}$, $\text{PSSR} = -20 \text{ Log} (\Delta V_{out} / \Delta V_{CC})$	---	50	---	dB

Note 2: Source capacitance for AD500-9-400M-TO5 is the capacitance of APD.

Note 3: Input referred noise is calculated as RMS output noise/ (gain at $f = 10 \text{ MHz}$). Noise density is (input referred noise)/vbandwidth.

Transfer Characteristics

The circuit used is an avalanche photodiode directly coupled to a high speed data handling transimpedance amplifier. The output of the APD (light generated current) is applied to the input of the amplifier. The amplifier output is in the form of a differential voltage pulsed signal.

The APD responsivity curve is provided in Fig. 2. The term Amps/Watt involves the area of the APD and can be expressed as Amps/mm²/Watts/mm², where the numerator applies to the current generated divided by the area of the detector, the denominator refers to the power of the radiant energy present per unit area. As an example assume a radiant input of 1 microwatt at 905 nm. The APD's corresponding responsivity is 0.58 A/W.

If energy in = $1 \mu W$, then the current from the APD = $(0.58 \text{ A/W}) \times (1 \times 10^{-6} W) = 0.58 \mu A$. We can then factor in the typical gain of the APD of 100, making the input current to the amplifier $58 \mu A$. From Fig. 5 we can see the amplifier output will be approximately 100 mV p-p.

Application notes

The AD500-9-400M-TO5 is a high speed optical data receiver. It incorporates an internal transimpedance amplifier with an avalanche photodiode.

This detector requires +3.5 V to +5.0 V voltage supply for the amplifier and a high voltage supply (100-240 V) for the APD. The internal APD follows the gain curve published for the AD500-9-TO52-S1 avalanche photodiode. The transimpedance amplifier provides differential output signals in the range of 200 millivolts differential.

In order to achieve highest gain, the avalanche photodiode needs a positive bias voltage (Fig. 1). However, a current limiting resistor must be placed in series with the photodiode bias voltage to limit the current into the transimpedance amplifier. **Failure to limit this current may result in permanent failure of the device.** The suggested initial value for this limiting resistor is 390 KOhm .

When using this receiver, good high frequency placement and routing techniques should be followed in order to achieve maximum frequency response. This includes the use of bypass capacitors, short leads and careful attention to impedance matching. The large gain bandwidth values of this device also demand that good shielding practices be used to avoid parasitic oscillations and reduce output noise.

Fig. 1: APD gain vs bias voltage

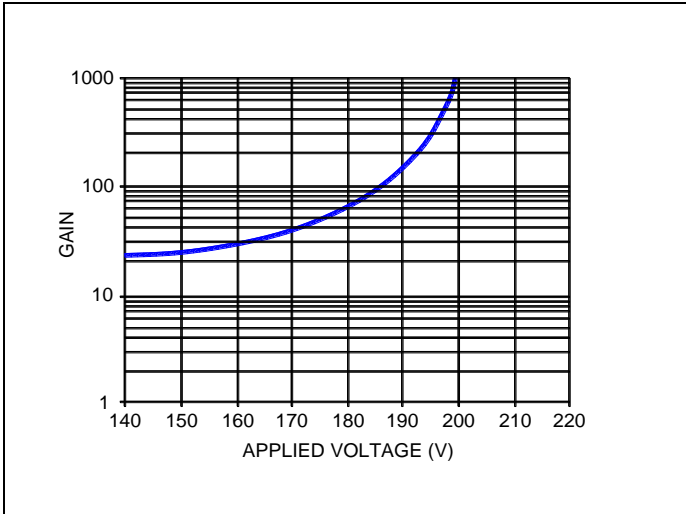


Fig. 2: APD Spectral response (M = 1)

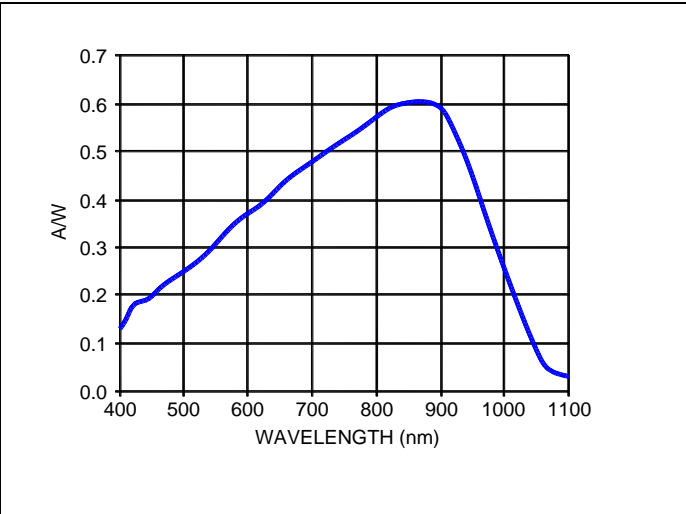


Fig. 3: Amplifier output vs temperature

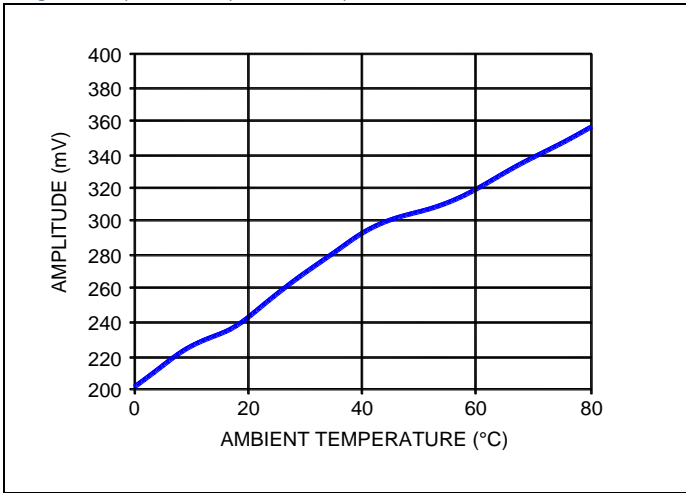


Fig. 4: APD Capacitance vs bias voltage

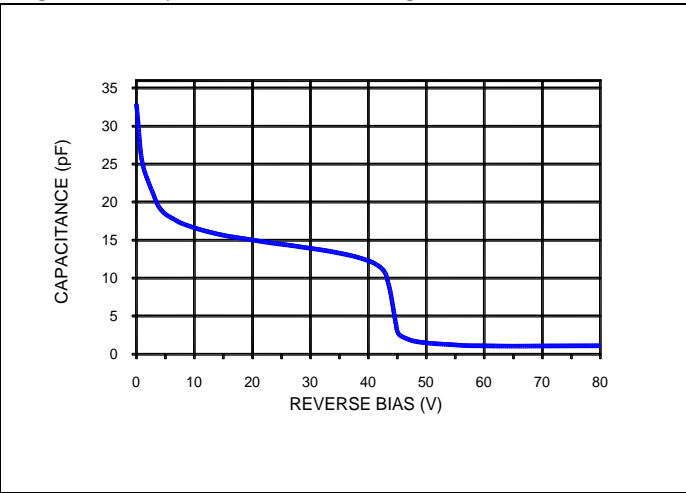


Fig. 5: Amplifier transfer function

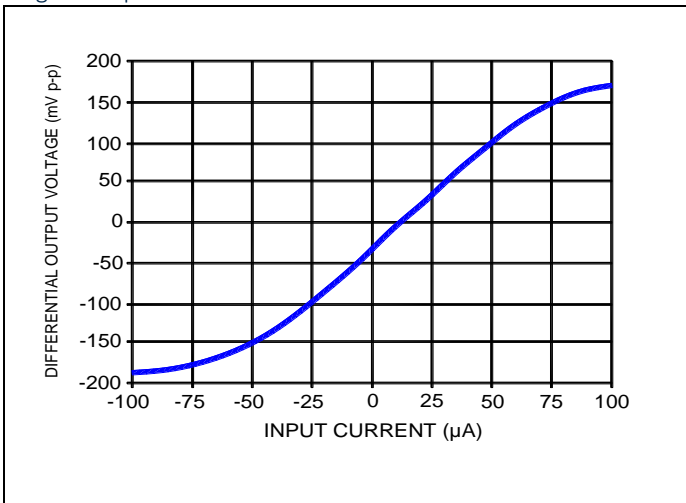
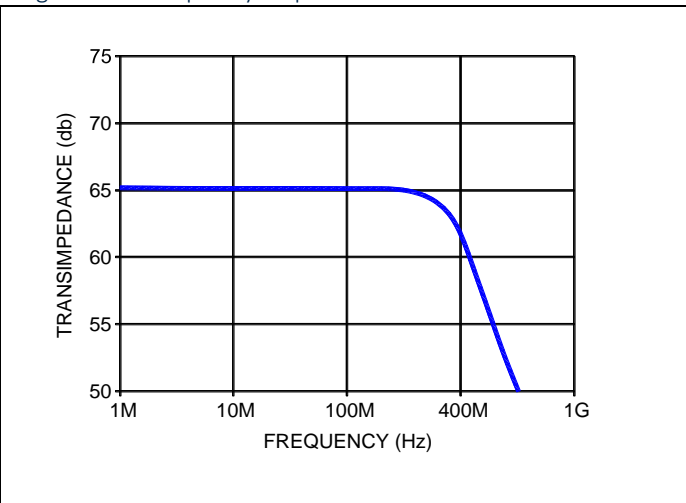


Fig. 6: Total frequency response



Компания «Life Electronics» занимается поставками электронных компонентов импортного и отечественного производства от производителей и со складов крупных дистрибьюторов Европы, Америки и Азии.

С конца 2013 года компания активно расширяет линейку поставок компонентов по направлению коаксиальный кабель, кварцевые генераторы и конденсаторы (керамические, пленочные, электролитические), за счёт заключения дистрибьюторских договоров

Мы предлагаем:

- Конкурентоспособные цены и скидки постоянным клиентам.
- Специальные условия для постоянных клиентов.
- Подбор аналогов.
- Поставку компонентов в любых объемах, удовлетворяющих вашим потребностям.
- Приемлемые сроки поставки, возможна ускоренная поставка.
- Доставку товара в любую точку России и стран СНГ.
- Комплексную поставку.
- Работу по проектам и поставку образцов.
- Формирование склада под заказчика.
- Сертификаты соответствия на поставляемую продукцию (по желанию клиента).
- Тестирование поставляемой продукции.
- Поставку компонентов, требующих военную и космическую приемку.
- Входной контроль качества.
- Наличие сертификата ISO.

В составе нашей компании организован Конструкторский отдел, призванный помогать разработчикам, и инженерам.

Конструкторский отдел помогает осуществить:

- Регистрацию проекта у производителя компонентов.
- Техническую поддержку проекта.
- Защиту от снятия компонента с производства.
- Оценку стоимости проекта по компонентам.
- Изготовление тестовой платы монтаж и пусконаладочные работы.



Тел: +7 (812) 336 43 04 (многоканальный)

Email: org@lifeelectronics.ru