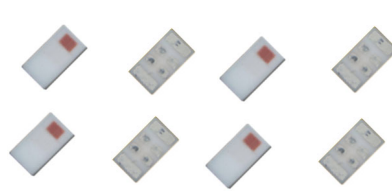


"High Frequency Ceramic Solutions"

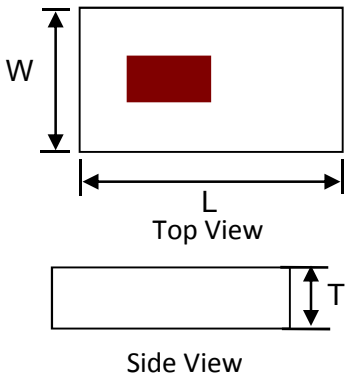
802.11 Dual Band 2.45/5 GHz Mini Chip Antenna. WiFi, WLAN, IoT **P/N 2450AD14A5500**
 Detail Specification: 11/6/2018 Page 1 of 6

This is the Web version of this datasheet, for the full datasheet, please contact us at: <https://www.johansontechnology.com/ask-a-question>

General Specifications			Let us help you with the antenna design, optimization, and tuning! https://www.johansontechnology.com/ipc-antenna-services			
Part Number	2450AD14A5500					
Frequency (MHz)	2400 - 2480	5150 - 5850				
Ave. Rad Efficiency	60%	80%				
Peak Gain (dBi typ.)	1.0 dBi typ. (XZ-Total)	4.0 dBi typ. (XZ-Total)				
Average Gain (dBi typ.)	-3.5 dBi typ. (XZ-Total)	-2.5 dBi typ. (XZ-Total)				
Return Loss (dB)	6 min.	6 min.			Storage Period	18 months max.
Impedance	50 Ω				Storage Temperature	-40 to +85°C
Input Power	2 Watts max. (CW)				Operating Temperature	-40 to +85°C
			Reel Quantity	4000pcs		

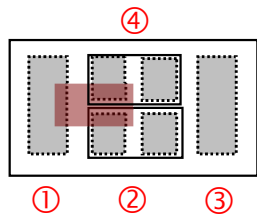
Part Number Explanation				
P/N Suffix	Packing Style	Bulk (loose)	Suffix = S	e.g. 2450AD14A5500S
		T & R	Suffix = T	e.g. 2450AD14A5500T
		100% Tin	Suffix = T or S	e.g. 2450AD14A5500(T or S)
	Evaluation Board	2450AD14A5500-EB1SMA & 2450AD14A5500-EB2SMA		

Mechanical Dimensions			Terminal Configuration	
	In	mm	No.	Function
L	0.063 ± 0.004	1.60 ± 0.10	1	GND
W	0.031 ± 0.004	0.80 ± 0.10	2	FEED
T	0.016 max.	0.40 max.	3	NC
			4	NC



Top View

Side View



Top View looking "through" the component

If you'd like the complete datasheet which includes detailed gain performance, layout guidelines, application notes, small WiFi application layout, send us as message at:
<https://www.johansontechnology.com/ask-a-question>
 As a bonus, you'll be assigned an RF Engineer to assist you in the design for free!

Johanson Technology, Inc. reserves the right to make design changes without notice.
 All sales are subject to Johanson Technology, Inc. terms and conditions.



802.11 Dual Band 2.45/5 GHz Mini Chip Antenna. WiFi, WLAN, IoT

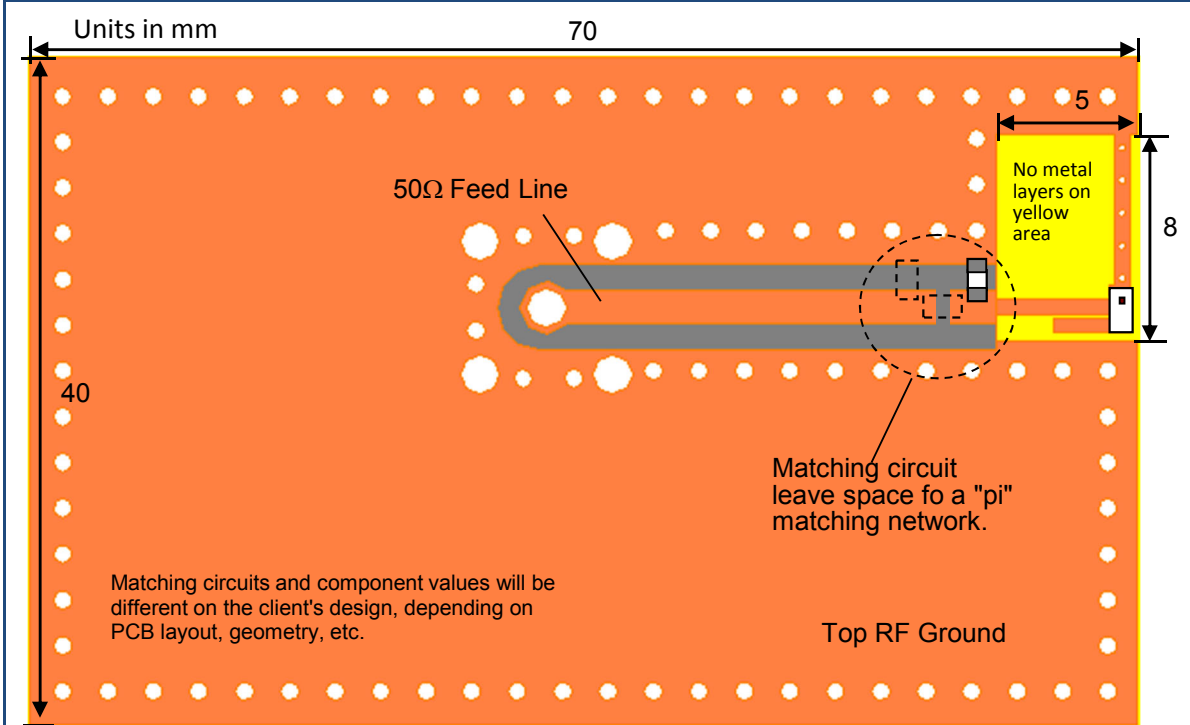
P/N 2450AD14A5500

Detail Specification: 11/6/2018

Page 2 of 6

This is the Web version of this datasheet, for the full datasheet, please contact us at: <https://www.johansontechnology.com/ask-a-question>

Mounting Considerations 1: Evaluation Board, 65x70mm (Scenario 1 Terminal Configuration)



To order the ABOVE pre-tuned 50Ω EVB with a female SMA connector click here: <https://www.johansontechnology.com/request-a-sample>

Would you like the layout file of the above? Have antenna tuning issues? Please contact us if you have any questions regarding the implementation of this antenna in your PCB's layout. We'll be happy to guide you to maximize the antenna's performance.

If you'd like the complete datasheet which includes detailed gain performance, layout guidelines, application notes, small WiFi application layout, send us as message at:

<https://www.johansontechnology.com/ask-a-question>

As a bonus, you'll be assigned an RF Engineer to assist you in the design for free!

Johanson Technology, Inc. reserves the right to make design changes without notice.
All sales are subject to Johanson Technology, Inc. terms and conditions.

802.11 Dual Band 2.45/5 GHz Mini Chip Antenna. WiFi, WLAN, IoT

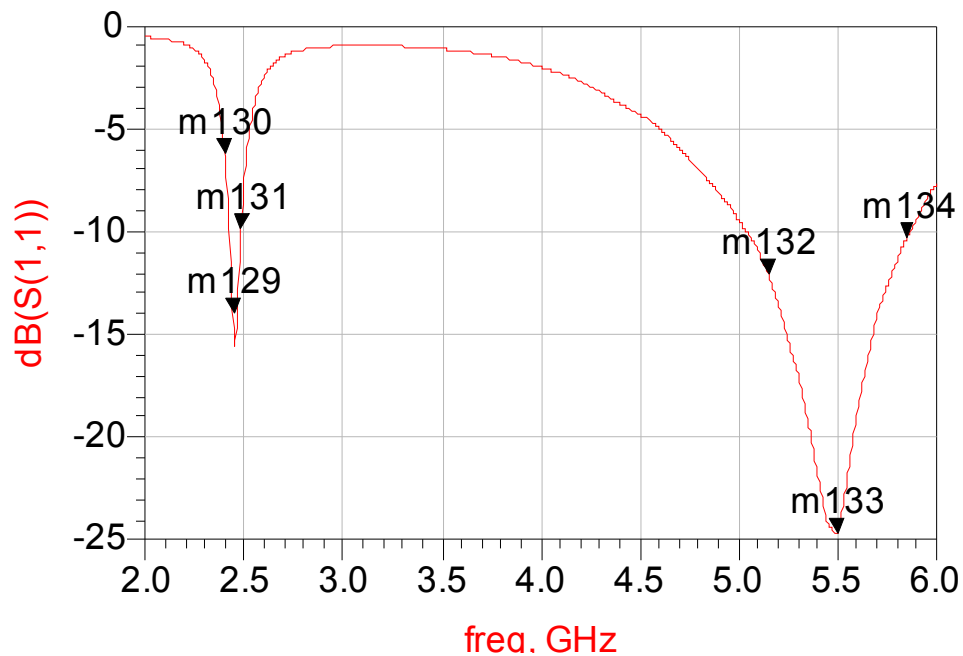
P/N 2450AD14A5500

Detail Specification: 11/6/2018

Page 3 of 6

This is the Web version of this datasheet, for the full datasheet, please contact us at: <https://www.johansontechnology.com/ask-a-question>

Mounting Considerations 2: Typical Electrical Performance (T=25°C)



If you'd like the complete datasheet which includes detailed gain performance, layout guidelines, application notes, small WiFi application layout, send us as message at:

<https://www.johansontechnology.com/ask-a-question>

As a bonus, you'll be assigned an RF Engineer to assist you in the design for free!

Johanson Technology, Inc. reserves the right to make design changes without notice.
All sales are subject to Johanson Technology, Inc. terms and conditions.

802.11 Dual Band 2.45/5 GHz Mini Chip Antenna. WiFi, WLAN, IoT

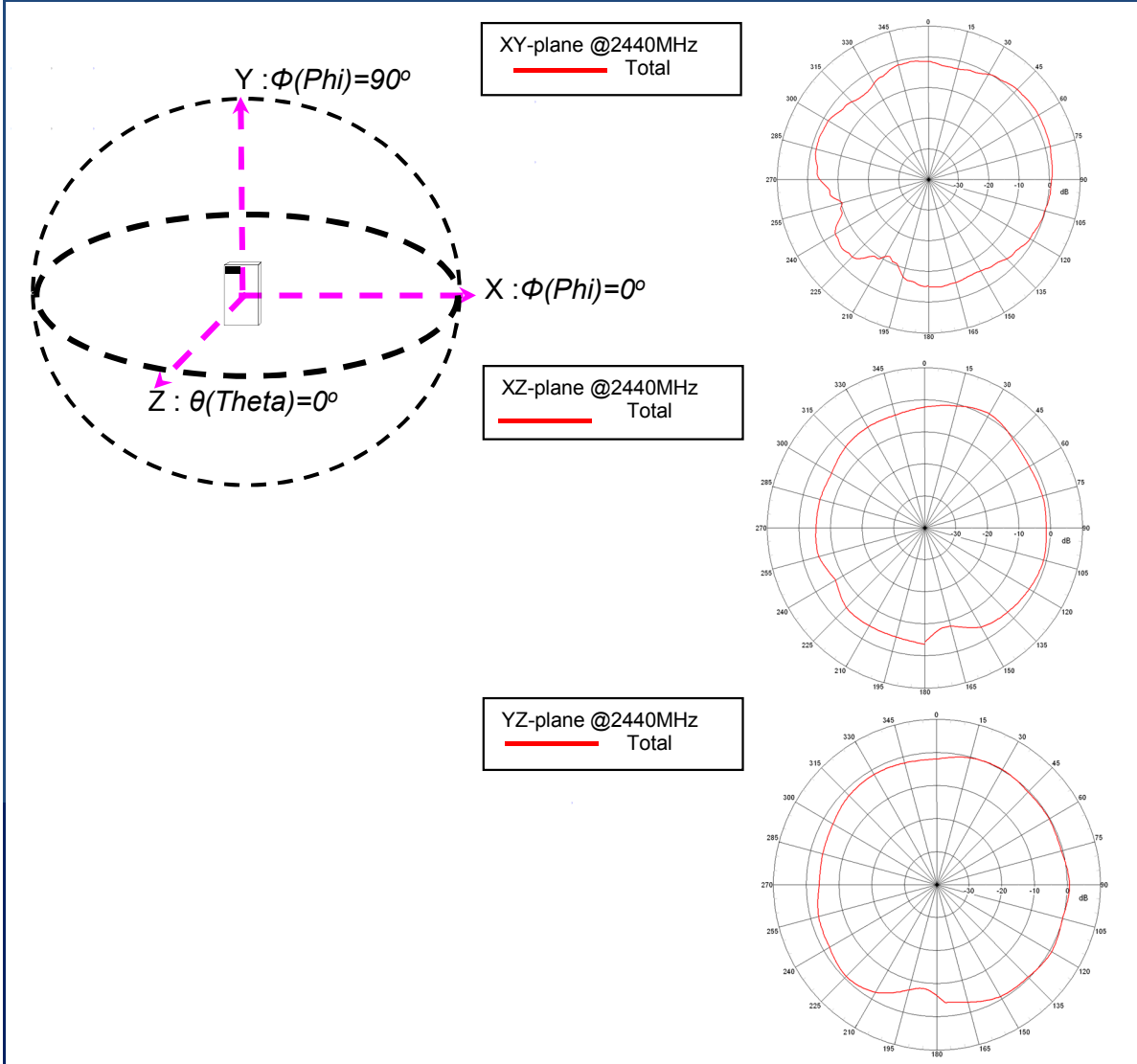
P/N 2450AD14A5500

Detail Specification: 11/6/2018

Page 4 of 6

This is the Web version of this datasheet, for the full datasheet, please contact us at: <https://www.johansontechnology.com/ask-a-question>

Typical EM Radiation Performance @ 2.44GHz (T=25°C)



If you'd like the complete datasheet which includes detailed gain performance, layout guidelines, application notes, small WiFi application layout, send us as message at:

<https://www.johansontechnology.com/ask-a-question>

As a bonus, you'll be assigned an RF Engineer to assist you in the design for free!

Johanson Technology, Inc. reserves the right to make design changes without notice.

All sales are subject to Johanson Technology, Inc. terms and conditions.

802.11 Dual Band 2.45/5 GHz Mini Chip Antenna. WiFi, WLAN, IoT

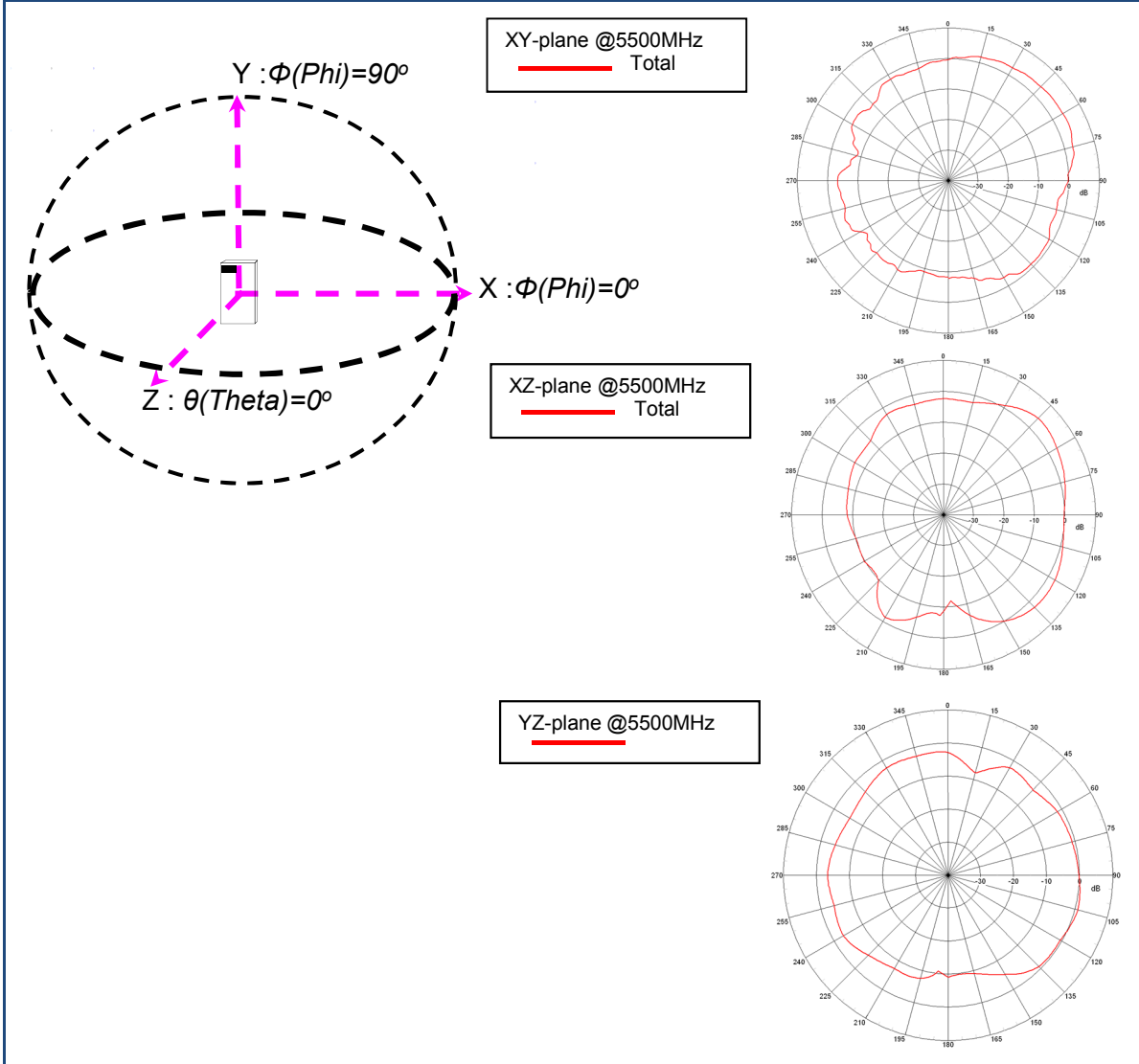
P/N 2450AD14A5500

Detail Specification: 11/6/2018

Page 5 of 6

This is the Web version of this datasheet, for the full datasheet, please contact us at: <https://www.johansontechnology.com/ask-a-question>

Typical EM Radiation Performance @ 5.50 GHz (T=25°C)



If you'd like the complete datasheet which includes detailed gain performance, layout guidelines, application notes, small WiFi application layout, send us as message at:

<https://www.johansontechnology.com/ask-a-question>

As a bonus, you'll be assigned an RF Engineer to assist you in the design for free!

Johanson Technology, Inc. reserves the right to make design changes without notice.
All sales are subject to Johanson Technology, Inc. terms and conditions.

Limited
Web
Version

"High Frequency Ceramic Solutions"

802.11 Dual Band 2.45/5 GHz Mini Chip Antenna. WiFi, WLAN, IoT

P/N 2450AD14A5500

Detail Specification: 11/6/2018

Page 6 of 6

This is the Web version of this datasheet, for the full datasheet, please contact us at: <https://www.johansontechnology.com/ask-a-question>

Antenna tuning, optimization, and validation services:

<https://www.johansontechnology.com/ipc-antenna-services>

For more antennas and to download measured S-parameters, go to:

<https://www.johansontechnology.com/antennas>

For more information about our diplexers:

<https://www.johansontechnology.com/diplexers>

Soldering Information

<https://www.johansontechnology.com/ipcsoldering-profile>

MSL Info

<https://www.johansontechnology.com/msl-rating>

Packaging information

<https://www.johansontechnology.com/tape-reel-packaging>

For layout review contact our Applications Team at:

<https://www.johansontechnology.com/ask-a-question>

RoHS Compliance

<https://www.johansontechnology.com/rohs-compliance>

Need help designing the antenna in? Use our antenna design services!

<https://www.johansontechnology.com/ipc-antenna-services>

2 Free layout reviews and if you need us to tune and characterize the antenna on your product (inside anechoic chamber) we can do that too. Small lab fee may apply for the latter.

If you'd like the complete datasheet which includes detailed gain performance, layout guidelines, application notes, small WiFi application layout, send us as message at:

<https://www.johansontechnology.com/ask-a-question>

As a bonus, you'll be assigned an RF Engineer to assist you in the design for free!

Johanson Technology, Inc. reserves the right to make design changes without notice.
All sales are subject to Johanson Technology, Inc. terms and conditions.



<https://www.johansontechnology.com>

4001 Calle Tecate • Camarillo, CA 93012 • TEL 805.389.1166 FAX 805.389.1821

Ver. 2.2

2018 Johanson Technology, Inc. All Rights Reserved

Компания «Life Electronics» занимается поставками электронных компонентов импортного и отечественного производства от производителей и со складов крупных дистрибьюторов Европы, Америки и Азии.

С конца 2013 года компания активно расширяет линейку поставок компонентов по направлению коаксиальный кабель, кварцевые генераторы и конденсаторы (керамические, пленочные, электролитические), за счёт заключения дистрибьюторских договоров

Мы предлагаем:

- Конкуренспособные цены и скидки постоянным клиентам.
- Специальные условия для постоянных клиентов.
- Подбор аналогов.
- Поставку компонентов в любых объемах, удовлетворяющих вашим потребностям.
- Приемлемые сроки поставки, возможна ускоренная поставка.
- Доставку товара в любую точку России и стран СНГ.
- Комплексную поставку.
- Работу по проектам и поставку образцов.
- Формирование склада под заказчика.
- Сертификаты соответствия на поставляемую продукцию (по желанию клиента).
- Тестирование поставляемой продукции.
- Поставку компонентов, требующих военную и космическую приемку.
- Входной контроль качества.
- Наличие сертификата ISO.

В составе нашей компании организован Конструкторский отдел, призванный помогать разработчикам, и инженерам.

Конструкторский отдел помогает осуществить:

- Регистрацию проекта у производителя компонентов.
- Техническую поддержку проекта.
- Защиту от снятия компонента с производства.
- Оценку стоимости проекта по компонентам.
- Изготовление тестовой платы монтаж и пусконаладочные работы.



Тел: +7 (812) 336 43 04 (многоканальный)

Email: org@lifeelectronics.ru