

## RDI Series

### Residential Door Interlock Switch



#### DESCRIPTION

Honeywell Relialign™ RDI Series Residential Door Interlock switches are electromechanical devices designed for use in residential swing door applications, specifically dumbwaiters, lifts for the mobility impaired and swing-door elevators in the USA. In Canada, the RDI is designed for use in residential swing door applications, specifically elevators and dumbwaiters but is not designed for use in lifts for the mobility impaired. The interlock holds the door in place and prevents it from being opened in potentially unsafe conditions (e.g. the elevator/lift car is not present at the door). A number of design features contribute to increase safety, reduce nuisance stoppages and call-backs, and contribute to simplified wiring and installation.

Featuring a custom internal solenoid control, the RDI may reduce complexity of the host controller, reduce power

consumption for a “greener” product, extend solenoid life and reduce solenoid “time outs,” reducing customer aggravation. Two Honeywell MICRO SWITCH™ switches are used to indicate door closure, providing an extra level of reliability.

Reliability and smooth operations are also enhanced by use of a metal key, that is less susceptible to bending and breakage. The lack of open or exposed contacts minimizes the possibility of owners making manual adjustments. Finally, the engagement of the key initiates electrical contact.

The snap-action cam mechanism requires less adjustment set-up time and reduces door movement that can cause nuisance shutdown. A Cat 5 connection option is available, simplifying installation. This door interlock is configurable and available in left- and right-hand versions, allowing for simplified customization. It is designed to be easy for the OEM to retrofit into their current design.

#### FEATURES

- Compliant to ASME A17.1 and UL 104
- Manual override for easy actuation without user hazard
- Two separate mechanical actions to indicate door closure
- Available with white or architectural bronze metal housings
- Metal key
- Internal solenoid control
- No open or exposed contacts
- Key engagement minimizes nuisance stoppage
- Door closure retention cam to hold door with minimal key-to-interlock play
- Cat 5 connection available
- Configurable product platform
- Universal voltage for ac and dc applications
- 51,44 mm W x 247,65 mm H x 49,23 mm D  
[2.025 in W x 9.75 in H x 1.938 in D]

#### POTENTIAL APPLICATIONS

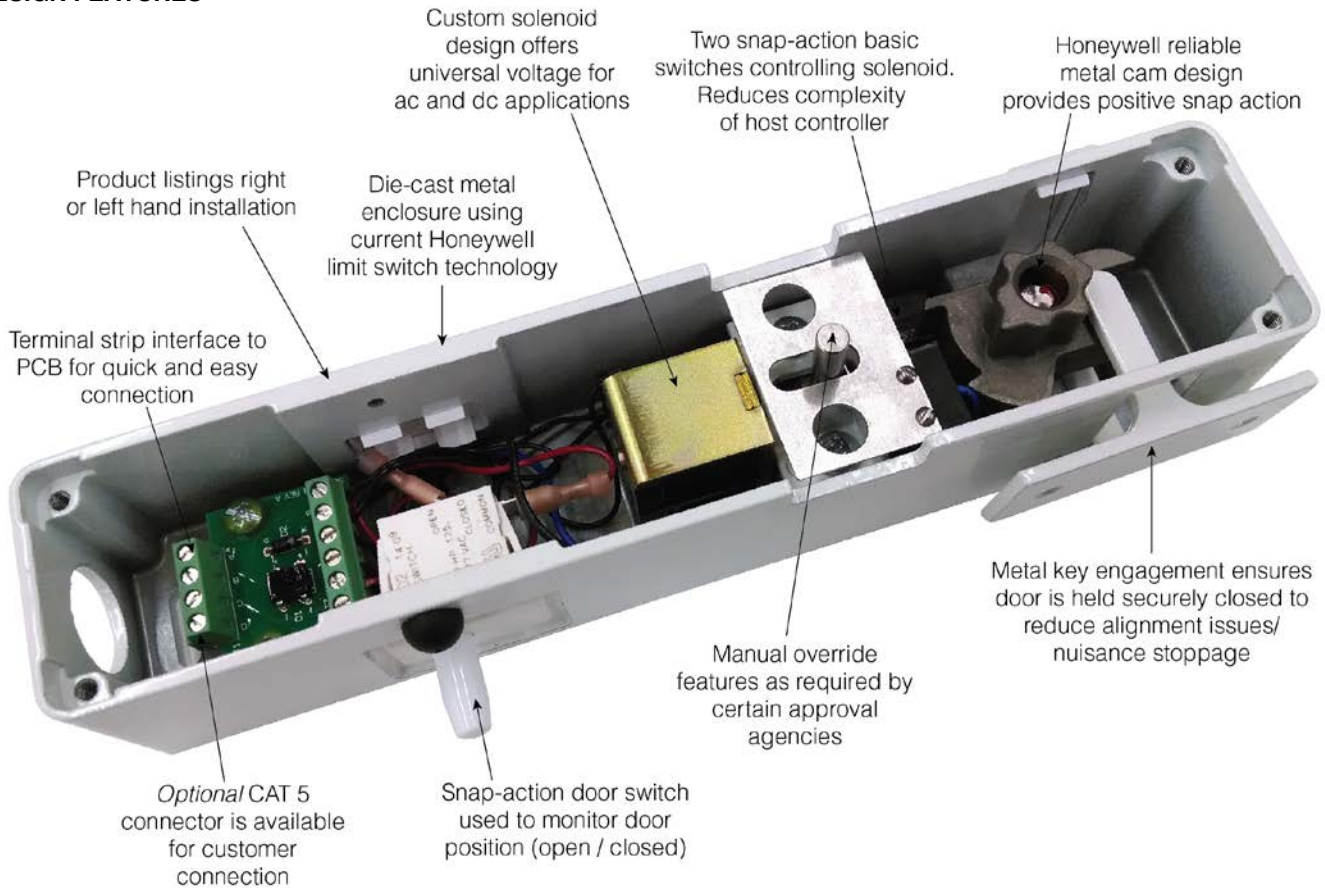
- In the USA: residential swing door applications, specifically dumbwaiters, lifts for the mobility impaired, and swing-door elevators
- In Canada: residential swing door applications, specifically elevators and dumbwaiters

#### BENEFITS

- Meets required safety codes
- Reduces potential for call-backs
- Reliable performance and multiple design features to minimize nuisance stoppage of applications
- Simplified wiring and installation
- Reduced OEM design and manufacturing costs
- Stronger OEM sales message: increased safety, reduced owner aggravation, reduced power consumption
- Honeywell brand quality

# RDI Series

## DESIGN FEATURES

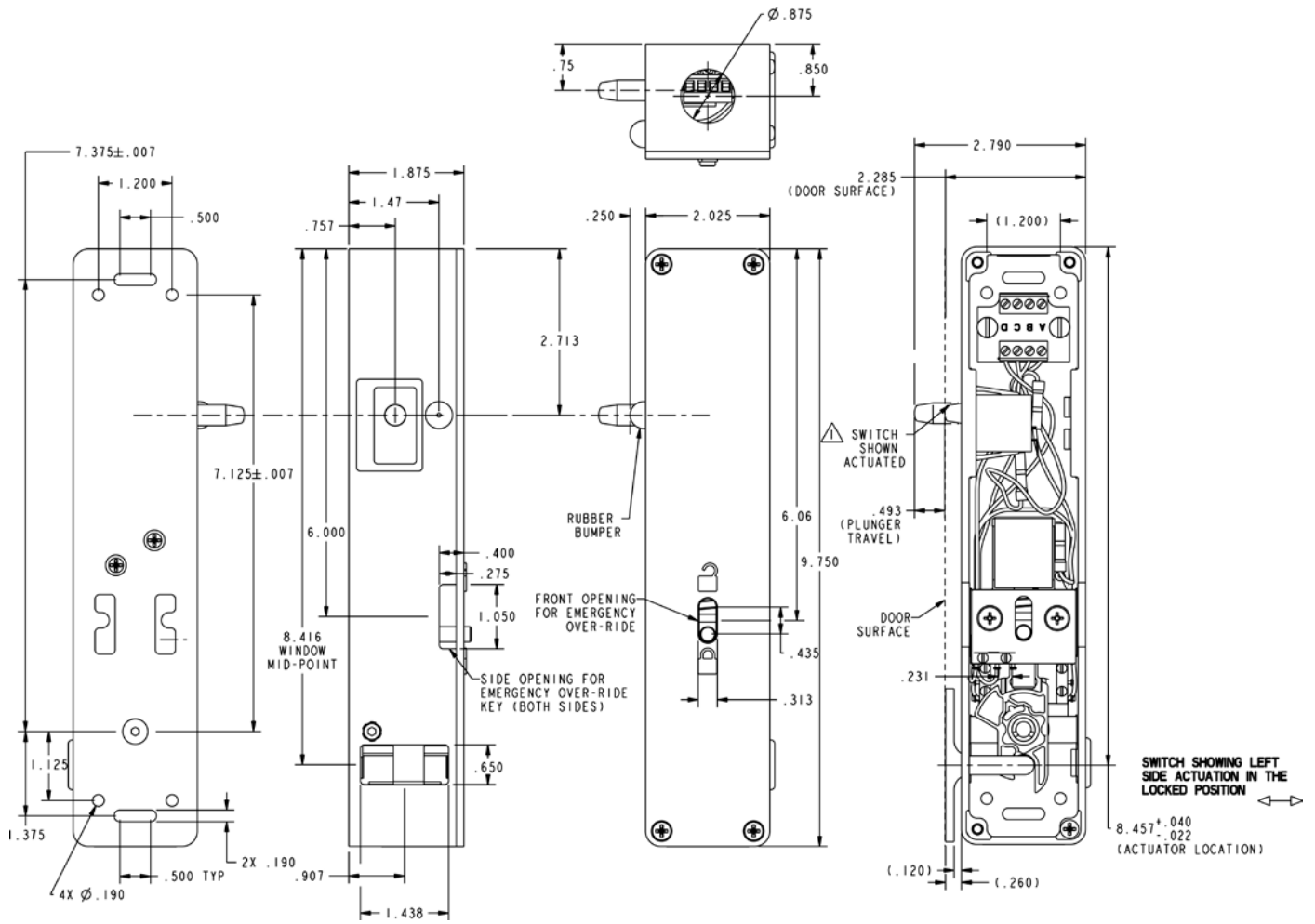


## PRODUCT LISTING

Catalog Listings	Description
RDI-H-L	Left-hand door interlock, terminal strip, series wiring (white cover)
RDI-H-R	Right-hand door interlock, terminal strip, series wiring (white cover)
RDI-H-LP	Left-hand door interlock, terminal strip, parallel wiring (white cover)
RDI-H-RP	Right-hand door interlock, terminal strip, parallel wiring (white cover)
RDI-H-L5B	Left-hand door interlock, CAT5 connector, series wiring (black cover)
RDI-H-R5B	Right-hand door interlock, CAT5 connector, series wiring (black cover)
RDI-H-L5P	Left-hand door interlock, CAT5 connector, parallel wiring (white cover)
RDI-H-R5P	Right-hand door interlock, CAT5 connector, parallel wiring (white cover)
RDI-H-L5	Left-hand door interlock, CAT5 connector, series wiring (white cover)
RDI-H-R5	Right-hand door interlock, CAT5 connector, series wiring (white cover)
RDI-H-LBR	Left-hand door interlock (architectural bronze metal cover)
RDI-H-RBR	Right-hand door interlock (architectural bronze metal cover)

# Door Interlock Switches

## DIMENSIONS



## **WARNING**

### **RISK TO LIFE OR PROPERTY**

Never use this product for an application involving serious risk to life or property without ensuring that the system as a whole has been designed to address the risks, and that this product is property rated and installed for the intended use within the overall system.

**Failure to comply with these instructions could result in death or serious injury.**

## **WARNING**

### **MISUSE OF DOCUMENTATION**

- The information presented in this product sheet is for reference only. Do not use this document as a product installation guide.
- Complete installation, operation, and maintenance information is provided in the instructions supplied with each product.

**Failure to comply with these instructions could result in death or serious injury.**

### **WARRANTY/REMEDY**

Honeywell warrants goods of its manufacture as being free of defective materials and faulty workmanship. Honeywell's standard product warranty applies unless agreed to otherwise by Honeywell in writing; please refer to your order acknowledgement or consult your local sales office for specific warranty details. If warranted goods are returned to Honeywell during the period of coverage, Honeywell will repair or replace, at its option, without charge those items it finds defective. **The foregoing is buyer's sole remedy and is in lieu of all other warranties, expressed or implied, including those of merchantability and fitness for a particular purpose. In no event shall Honeywell be liable for consequential, special, or indirect damages.**

While we provide application assistance personally, through our literature and the Honeywell web site, it is up to the customer to determine the suitability of the product in the application.

Specifications may change without notice. The information we supply is believed to be accurate and reliable as of this printing. However, we assume no responsibility for its use.

### **SALES AND SERVICE**

Honeywell serves its customers through a worldwide network of sales offices, representatives and distributors. For application assistance, current specifications, pricing or name of the nearest Authorized Distributor, contact your local sales office or:

**E-mail:** [info.sc@honeywell.com](mailto:info.sc@honeywell.com)

**Internet:** [sensing.honeywell.com](http://sensing.honeywell.com)

#### **Phone and Fax:**

Asia Pacific	+65 6355-2828
	+65 6445-3033 Fax
Europe	+44 (0) 1698 481481
	+44 (0) 1698 481676 Fax
Latin America	+1-305-805-8188
	+1-305-883-8257 Fax
USA/Canada	+1-800-537-6945
	+1-815-235-6847
	+1-815-235-6545 Fax

Sensing and Control  
Honeywell  
1985 Douglas Drive North  
Golden Valley, MN 55422  
[honeywell.com](http://honeywell.com)

001031-3-EN IL50 GLO Printed in USA  
March 2014  
Copyright © 2014 Honeywell International Inc. All rights reserved.

# Honeywell

Компания «Life Electronics» занимается поставками электронных компонентов импортного и отечественного производства от производителей и со складов крупных дистрибьюторов Европы, Америки и Азии.

С конца 2013 года компания активно расширяет линейку поставок компонентов по направлению коаксиальный кабель, кварцевые генераторы и конденсаторы (керамические, пленочные, электролитические), за счёт заключения дистрибьюторских договоров

Мы предлагаем:

- Конкурентоспособные цены и скидки постоянным клиентам.
- Специальные условия для постоянных клиентов.
- Подбор аналогов.
- Поставку компонентов в любых объемах, удовлетворяющих вашим потребностям.
- Приемлемые сроки поставки, возможна ускоренная поставка.
- Доставку товара в любую точку России и стран СНГ.
- Комплексную поставку.
- Работу по проектам и поставку образцов.
- Формирование склада под заказчика.
- Сертификаты соответствия на поставляемую продукцию (по желанию клиента).
- Тестирование поставляемой продукции.
- Поставку компонентов, требующих военную и космическую приемку.
- Входной контроль качества.
- Наличие сертификата ISO.

В составе нашей компании организован Конструкторский отдел, призванный помогать разработчикам, и инженерам.

Конструкторский отдел помогает осуществить:

- Регистрацию проекта у производителя компонентов.
- Техническую поддержку проекта.
- Защиту от снятия компонента с производства.
- Оценку стоимости проекта по компонентам.
- Изготовление тестовой платы монтаж и пусконаладочные работы.



Тел: +7 (812) 336 43 04 (многоканальный)

Email: [org@lifeelectronics.ru](mailto:org@lifeelectronics.ru)