

PLEASE CHECK WWW.MOLEX.COM FOR LATEST PART INFORMATION

Part Number: [0877153909](#)
Status: **Active**
Overview:
Description: 1.00mm (.039") Pitch, PCI Express* Connector, 230 Circuits, Nylon 4/6 Glass-filled, Black Housing, Phosphor Bronze, 0.38µm (15µ") Gold (Au) Plating, with Plastic Pegs, 3.00mm (.118") Solder tail, Lead Free

Agency Certification

CSA LR19980

General

Product Family Edge Card Connectors
 Series 87715
 Component Type Edgecard to PCB
 Overview pci_express_card_edge_connector
 Product Name PCI Express*

Physical

Circuits (Loaded) 230
 Circuits (maximum) 230
 Circuits Detail All Signal
 Durability (mating cycles max) 50
 Entry Angle Vertical (Top Entry)
 Flammability 94V-0
 Keying to Mating Part Yes
 Material - Plating Mating Gold
 Material - Plating Termination Tin-Lead
 PC Tail Length (in) 0.118 In
 PC Tail Length (mm) 3.00 mm
 PCB Locator Yes
 PCB Retention Yes
 PCB Thickness Recommended (in) 0.093 In
 PCB Thickness Recommended (mm) 2.40 mm
 Packaging Type Tray
 Pitch - Mating Interface (in) 0.039 In
 Pitch - Mating Interface (mm) 1.00 mm
 Pitch - Term. Interface (in) 0.039 In
 Pitch - Term. Interface (mm) 1.00 mm
 Plating min: Mating (µin) 15
 Plating min: Mating (µm) 0.38
 Polarized to Mating Part Yes
 Temperature Range - Operating 65°C
 Termination Interface: Style Through Hole

Electrical

Current - Maximum per Contact 1.1A
 Voltage - Maximum 50V AC (RMS)/DC

Solder Process Data

Lead-free Process Capability Wave Capable (TH only)
 Process Temperature max. C 260

Material Info

Reference - Drawing Numbers

Packaging Specification PK-87715-202
 Product Specification PS-87715-202

EU RoHS

**ELV and RoHS
Compliant**

REACH SVHC

Not Reviewed

Halogen-Free

Status

Not Halogen-Free

China RoHS



**Need more information on product
environmental compliance?**

Email productcompliance@molex.com
 For a multiple part number RoHS Certificate of Compliance, [click here](#)

Please visit the [Contact Us](#) section for any non-product compliance questions.

Search Parts in this Series

87715Series

Mates With

PCI Express Card

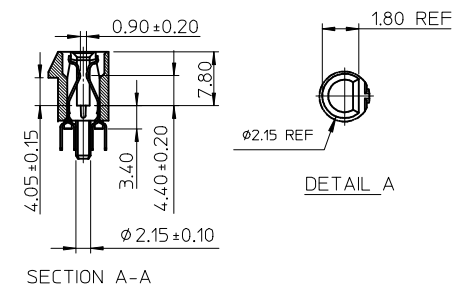
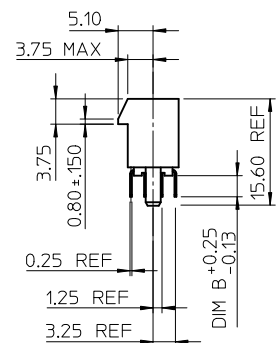
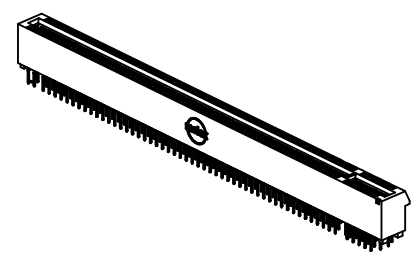
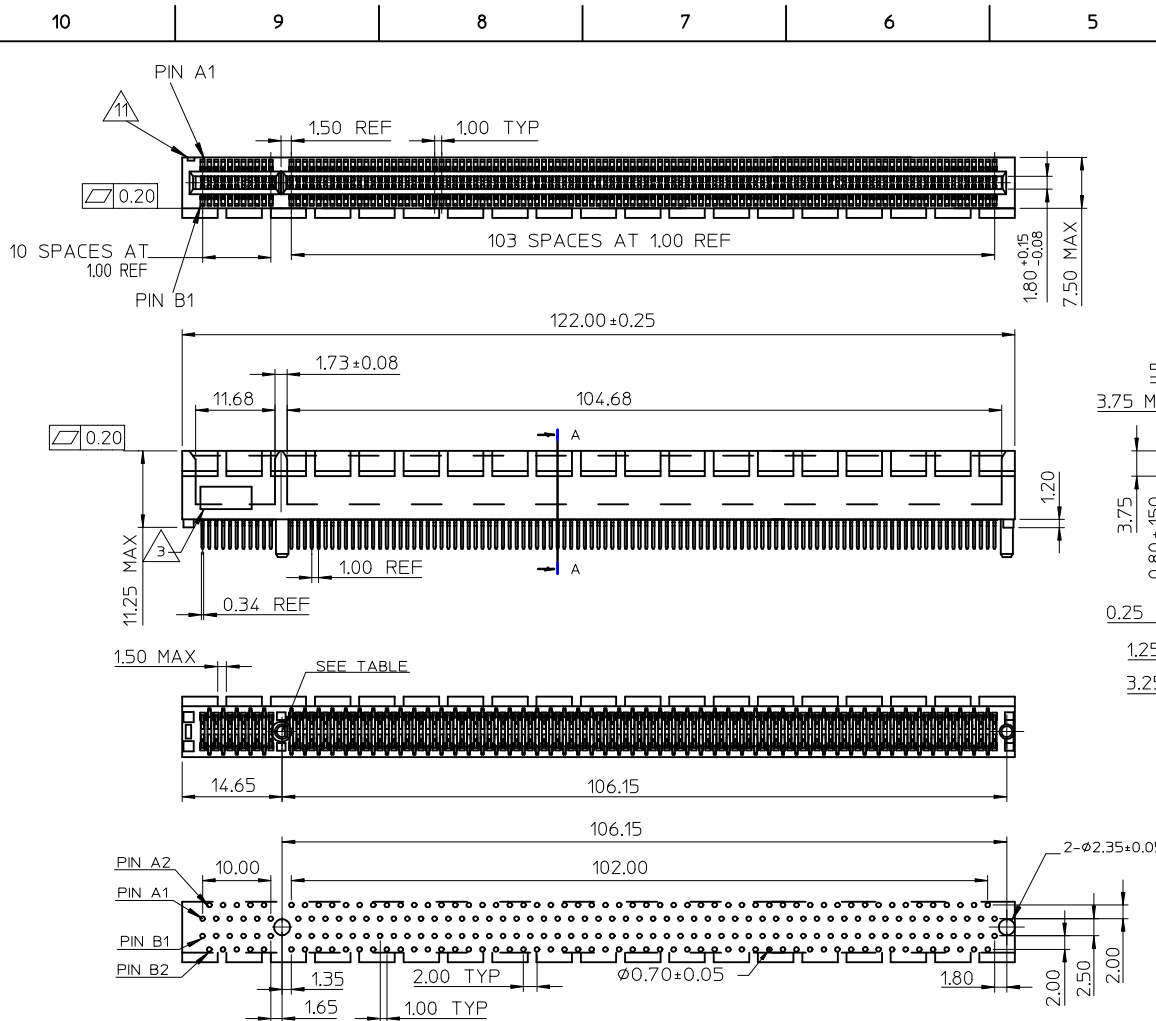
Sales Drawing
Test Summary

SD-87715-202
TS-87715-202

* PCI Express is a registered trademark of PCI-SIG®

This document was generated on 06/04/2010

PLEASE CHECK WWW.MOLEX.COM FOR LATEST PART INFORMATION



- NOTES:
- 1.MATERIALS:
1-1.HOUSING:SEE TABLE GLASS FIBER FILLED UL94V-0
COLOR:SEE TABLE
1-2.CONTACT:SEE TABLE
 - 2.PLATING:
2-1.CONTACT AREA: GOLD, THICKNESS : SEE TABLE
2-2.SOLDER TAIL: 100 MICROINCH MIN TIN
2-3.UNDER PLATING: 50 MICROINCH MIN NICKEL OVERALL
 - 3.DATE CODE:TO BE PRINTED
 - 4.PRODUCT SPECIFICATION REFER TO PS-87715-200
 - 5.PACKAGE SPECIFICATION REFER TO PK-87715-202
 - 6.TEST SUMMARY:REFER TO TS-87715-202
 - 7.LEAD FREE AND RoHS COMPLIANT PRODUCT.

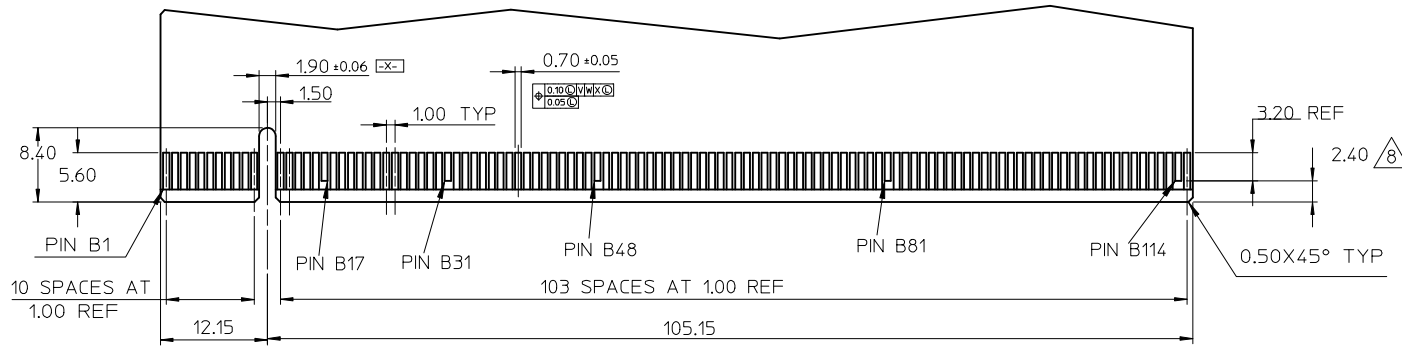
MOLEX P/N	CIRCUIT SIZE	HOUSING MATERIAL	HOUSING COLOR	TERMINAL MATERIAL	CONTACT PLATING	DIM B
87715-3908						2.54
87715-3909	230	NYLON 46	BLACK	PHOSPHOR BROZNE	15 MNCH	3.00
87715-3999					30 MNCH	3.00

ADD P/N, NOTE 2	EC NO: S2010-0318	DESCRIPTION	QUALITY SYMBOLS
	DRWN: JESSIECHUA 2009/10/14		$\nabla_A = 0$
	CHKD: KSSHANHA 2009/10/14		$\nabla_C = 0$
	APPR: NAGESHKN 2009/10/15		$\nabla_B = 0$
D1	REV		

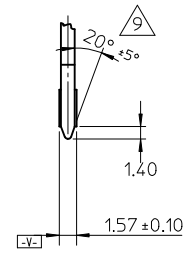
	GENERAL TOLERANCES (UNLESS SPECIFIED)	
	mm	INCH
4 PLACES	± ---	± ---
3 PLACES	± ---	± ---
2 PLACES	± 0.25	± ---
1 PLACE	± 0.25	± ---
ANGULAR ± 3 °		

DIMENSION STYLE		SCALE	DESIGN UNITS
MM ONLY		NTS	METRIC
DRAWN BY	DATE	TITLE	
TOM	2003/12/25	1.0 EDGE CARD 230 CKTS VERTICAL DIP CONNECTOR (LEAD FREE VERSION)	
CHECKED BY	DATE	MOLEX INCORPORATED	
SAM SIN	2003/12/25	SD-87715-202	
APPROVED BY	DATE	SHEET NO.	
WLISON	2003/12/25	1 OF 2	
MATERIAL NO.	SEE TABLE	DOCUMENT NO.	

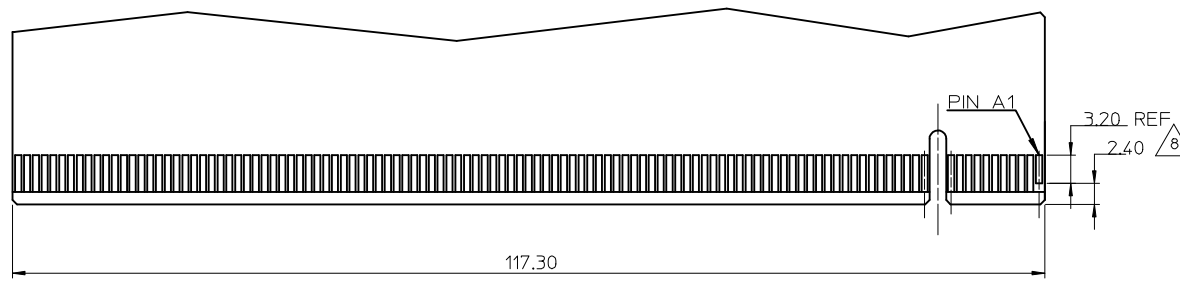
DRAFT WHERE APPLICABLE MUST REMAIN WITHIN DIMENSIONS		THIS DRAWING CONTAINS INFORMATION THAT IS PROPRIETARY TO MOLEX INCORPORATED AND SHOULD NOT BE USED WITHOUT WRITTEN PERMISSION	
--	--	---	--



DAUGHTER CARD
PRIMARY (COMPONENT) SIDE



ACROSS PADS



DAUGHTER CARD
SECONDARY (SOLDER) SIDE

I/O PANEL DIRECTION

NOTE:

- 8 NO TIE BAR PERMITTED FROM CARD EDGE TO LEADING EDGE OF PAD FOR PIN A1, B17, B31, B48, B81, B114
- 9 CHAMFER EDGES MUST BE FREE OF CUTTING BURRS.
- 10. THE MATED CARD COMPLY WITH PCI EXPRESS CARD REV 1.0 STANDARD
- 11. PIN 1 IDENTIFIER

ADD P/N, NOTE 2 EC NO: S2010-0318 DRWN: JESSIECHUA 2009/10/14 CHKD: KSSHANITA 2009/10/14 APPR: NAGESHKN 2009/10/15	QUALITY SYMBOLS	GENERAL TOLERANCES (UNLESS SPECIFIED)		DIMENSION STYLE MM ONLY		SCALE NTS	DESIGN UNITS METRIC	THIRD ANGLE PROJECTION
	$F_A=0$	4 PLACES	mm	INCH	DRAWN BY TOM	DATE 2003/12/25	TITLE 1.0 EDGE CARD 230 CKTS VERTICAL DIP CONNECTOR (LEAD FREE VERSION)	
	$F_C=0$	3 PLACES	± ---	± ---	CHECKED BY SAM SIN	DATE 2003/12/25	MOLEX INCORPORATED	
	$F_P=0$	2 PLACES	± 0.25	± ---	APPROVED BY WLISON	DATE 2003/12/25	MATERIAL NO.	DOCUMENT NO. SD-87715-202
		1 PLACE	± 0.25	± ---	ANGULAR ± 3 °			SHEET NO. 2 OF 2
		DRAFT WHERE APPLICABLE MUST REMAIN WITHIN DIMENSIONS		SEE TABLE		THIS DRAWING CONTAINS INFORMATION THAT IS PROPRIETARY TO MOLEX INCORPORATED AND SHOULD NOT BE USED WITHOUT WRITTEN PERMISSION		

Компания «Life Electronics» занимается поставками электронных компонентов импортного и отечественного производства от производителей и со складов крупных дистрибьюторов Европы, Америки и Азии.

С конца 2013 года компания активно расширяет линейку поставок компонентов по направлению коаксиальный кабель, кварцевые генераторы и конденсаторы (керамические, пленочные, электролитические), за счёт заключения дистрибьюторских договоров

Мы предлагаем:

- Конкуренеспособные цены и скидки постоянным клиентам.
- Специальные условия для постоянных клиентов.
- Подбор аналогов.
- Поставку компонентов в любых объемах, удовлетворяющих вашим потребностям.
- Приемлемые сроки поставки, возможна ускоренная поставка.
- Доставку товара в любую точку России и стран СНГ.
- Комплексную поставку.
- Работу по проектам и поставку образцов.
- Формирование склада под заказчика.
- Сертификаты соответствия на поставляемую продукцию (по желанию клиента).
- Тестирование поставляемой продукции.
- Поставку компонентов, требующих военную и космическую приемку.
- Входной контроль качества.
- Наличие сертификата ISO.

В составе нашей компании организован Конструкторский отдел, призванный помогать разработчикам, и инженерам.

Конструкторский отдел помогает осуществить:

- Регистрацию проекта у производителя компонентов.
- Техническую поддержку проекта.
- Защиту от снятия компонента с производства.
- Оценку стоимости проекта по компонентам.
- Изготовление тестовой платы монтаж и пусконаладочные работы.



Тел: +7 (812) 336 43 04 (многоканальный)

Email: org@lifeelectronics.ru