

CROSS REFERENCE

Label format - Product Order Code . . .87



THERMAL TRANSFER LABELS

| | | | |
|---------------------------------------|-----|-------------------------------------|-----|
| WP White Polyester | 88 | NC Nylon Cloth Terminal Markers . . | 110 |
| CP Clear Polyester | 90 | Kapton Labels | 112 |
| HW HighTack White Polyester | 92 | T1K Standard Polyimide | 113 |
| HM High Tack Metalized Polyester . . | 94 | T2K High-performance Polyimide . . | 114 |
| MP Metalized Polyester | 96 | TSK Static-safe Polyimide | 115 |
| HMM High Tack Matte Metalized . . . | 98 | KTT Tan Aerospace Polyimide | 116 |
| MV Metalized Void Polyester | 100 | PVF Polyvinyl Fluoride | 118 |
| TN Tamper Proof Polyethylene | 102 | EP Paper | 120 |
| WV White Vinyl | 104 | VF Clear Tedlar® Overlamine | 122 |
| NC Nylon Cloth | 106 | | |
| NC Nylon Cloth Wire Markers | 108 | | |



DOT MATRIX LABELS

| | |
|--|-----|
| C Vinyl Cloth Labels | 124 |
| M Metalized Polyester Labels | 126 |
| K Kapton Labels | 128 |
| E White Polyester Labels | 130 |



LASER LABELS

| | |
|----------------------------------|------|
| LE Polyester | 132 |
| LM Metalized Polyester | 132 |
| LEB2 Polyester | 1322 |

Label format - Old format order code cross reference

Thermal transfer

| Old label format | New product order code | Old label format | New product order code |
|------------------|------------------------|------------------|------------------------|
| 100 | TTP400XX-10 | 138 | XX-080080-10-# |
| 101 | XX-381064-10-# | 139 | XX-178095-10-# |
| 102 | XX-381191-5-# | 201 | XX-381064-10-# |
| 103 | XX-699254-5-# | 205 | XX-191064-10-# |
| 104 | XX-762508-2.5-# | 214 | XX-508127-10-# |
| 105 | XX-191064-10-# | 230 | XX-203127-10-# |
| 106 | XX-101165-0.85-# | 901 | XX-127032-10-# |
| 107 | XX-254127-10-# | 902 | XX-040033-10-# |
| 108 | XX-064064-25-# | 903 | XX-254045-10-# |
| 109 | XX-165051-25-# | 904 | XX-089047-10-# |
| 110 | XX-254097-10-# | 905 | XX-305047-10-# |
| 111 | XX-318064-10-# | 906 | XX-445064-10-# |
| 112 | XX-508064-10-# | 907 | XX-254064-10-# |
| 114 | XX508127-10-# | 908 | XX-095080-25-# |
| 115 | XX-254254-10-# | 909 | XX-208086-5-# |
| 116 | XX-095095-10-# | 911 | XX-508095-5-# |
| 117 | XX-508318-2.5-# | 912 | XX-318097-10-# |
| 118 | XX-762381-2.5-# | 913 | XX-165102-10-# |
| 119 | XX-101635-2.5-# | 914 | XX-445102-5-# |
| 121 | XX-523841-1.5-# | 916 | XX-127127-10-# |
| 122 | XX-127111-10-# | 917 | XX-381127-5-# |
| 123 | XX-508254-5-# | 918 | XX-222159-15-# |
| 124 | XX-508508-3-# | 919 | XX-171171-10-# |
| 125 | XX-101508-2.5-# | 920 | XX-478175-5-# |
| 126 | XX-101762-1.8-# | 921 | XX-699191-5-# |
| 127 | XX-101101-1.3-# | 922 | XX-406254-1.5-# |
| 128 | XX-762127-1-# | 923 | XX-250381-10-# |
| 129 | XX-229064-10-# | 924 | XX-381381-2.5-# |
| 130 | XX-203127-10-# | 925 | XX-610419-2.5-# |
| 132 | XX-381020-10-# | 926 | XX-445445-2-# |
| 134 | XX-165051-25-# | 927 | XX-381635-5-# |
| 136 | XX-040040-25-# | 928 | XX-191762-5-# |
| 137 | XX-114040-25-# | | |

Dot matrix

| Old label format | New product order code |
|------------------|------------------------|
| 1 | X-165051-10-# |
| 3 | X-191064-10-# |
| 4 | X-203127-10-# |
| 5 | X-254095-10-# |
| 6A | X-508095-5-# |
| 7 | X-254127-10-# |
| 8 | X-381191-10-# |
| 11 | X-699254-2.5-# |
| 12 | X-920381-2.5-# |
| 13 | X-920254-2.5-# |
| 16 | X-203365-10-# |
| 17 | X-076191-10-# |
| B2 | X-533064-5-# |
| B4 | X-229064-10-# |
| B6 | X-394064-10-# |
| E | X-203064-10-# |
| L1 | X-080080-10-# |
| M | X-381064-10-S1-9 |
| L2 | X-064064-10-# |
| L3 | X-095095-10-# |
| R1 | X-508254-4-# |
| R2 | X-673254-3-# |
| R3 | X-508318-3-# |
| R4 | X-673349-3-# |
| R5 | X-762508-1-# |
| R7 | X-165101-1-# |
| V1 | X-127111-10-# |
| Y3 | X-215055-10-# |
| Y5 | X-115064-10-# |
| Y6 | X-154064-10-# |
| Y7 | X-293064-10-# |
| Y8 | X-711064-5-# |
| Y9 | X-121064-10-# |
| Y10 | X-102070-10-# |
| Y12 | X-159079-10-# |
| Y13 | X-533114-5-# |
| Y14 | X-572286-2.5-# |
| Y15 | X-699318-2.5-# |

XX = Insert material code from table below. # = Insert color code from table below right.

| Examples | Old part number | New part number |
|------------------|-----------------|-----------------|
| Thermal transfer | 101-T1K-10 | T1K-381064-10-9 |
| Dot matrix | 3-EW10F | E-191064-10-9 |

X = Insert material code from table below left.
= Insert color code from table below.

Material codes – thermal transfer labels

| | |
|---|--|
| CP = Clear polyester | PVF = Polyvinylfluoride (Tedlar®) |
| EP = Paper | T1K = Standard polyimide (Kapton®) 1 mil |
| HM = High tack metalized polyester | T1K = Standard polyimide (Kapton®) 1 mil |
| HMM = High tack matte metalized | T2K = High-performance polyimide (Kapton®) 2 mil |
| HW = High tack white polyester | T2Y = Modified polyimide |
| KTT = Tan polyimide (Kapton®) | TN = Tamper-proof polyethylene |
| MP = Metalized polyester | TSK = Static-safe polyimide (Kapton®) |
| MV = Tamper-evident metalized polyester | WP = White polyester |
| NC = Nylon cloth | VV = White vinyl |

Material codes – dot matrix labels

| | |
|---------------------|-----------------------------|
| C = Vinyl cloth | K = Tan polyimide (Kapton®) |
| E = White polyester | M = Metalized polyester |

Color codes

| | |
|------------|-------------|
| 0 = Black | 8 = Gray |
| 1 = Brown | 9 = White |
| 2 = Red | X = Clear |
| 3 = Orange | 1A = Tan |
| 4 = Yellow | 2L = Pink |
| 5 = Green | 8A = Silver |
| 6 = Blue | |
| 7 = Violet | |

WP White polyester labels

Tyco Electronics WP is a thermal transfer printable white polyester film with a permanent acrylic adhesive. It is ideal for bar coding, PCB and component labeling, as well as general purpose labeling applications that require a high durability white label. WP is resistant to a variety of solvents while maintaining print quality. It is UL Listed and print performance and durability are reliable when used with Tyco Electronics 1330-0607 ribbon.



Features and benefits

- Thermal transfer printable
- Excellent for use in PCB component labeling
- Ink receptive topcoat
- Excellent for bar code applications
- UL Listed



Specifications/approvals

Tyco Electronics Industry TTDS-073
UL MH17292 Group PGJ12

Adhesive

Permanent acrylic

Service temperature

-40°C to +150°C -40°F to +302°F

Recommended printer

T300 Series printers

Recommended ribbon

1330-0607-10*

*Alternative printers and ribbons are available for special applications. Contact Tyco Electronics Identification for more information.

Part numbering system

WP-040040-10-9



Ordering information



Product dimensions

| Product order code | Package quantity | Labels across | Label width (A) | | Label height (B) | | Horizontal repeat (C) | | Vertical repeat (D) | | Web width (E) | |
|--------------------|------------------|---------------|-----------------|---------------|------------------|---------------|-----------------------|---------------|---------------------|---------------|---------------|---------------|
| | | | mm | <i>inches</i> | mm | <i>inches</i> | mm | <i>inches</i> | mm | <i>inches</i> | mm | <i>inches</i> |
| WP-040040-25-9 | 25,000 | 20 | 4.0 | <i>0.157</i> | 4.0 | <i>0.157</i> | 4.0 | <i>0.157</i> | 7.2 | <i>0.281</i> | 86.0 | <i>3.380</i> |
| WP-064064-25-9 | 25,000 | 12 | 6.4 | <i>0.250</i> | 6.4 | <i>0.250</i> | 6.4 | <i>0.250</i> | 9.5 | <i>0.375</i> | 82.2 | <i>3.240</i> |
| WP-080080-10-9 | 10,000 | 8 | 8.0 | <i>0.315</i> | 8.0 | <i>0.315</i> | 9.9 | <i>0.390</i> | 13.3 | <i>0.525</i> | 83.3 | <i>3.280</i> |
| WP-089047-10-9 | 10,000 | 5 | 8.9 | <i>0.350</i> | 4.7 | <i>0.185</i> | 11.4 | <i>0.450</i> | 7.9 | <i>0.313</i> | 60.6 | <i>2.386</i> |
| WP-095080-25-9 | 25,000 | 5 | 9.5 | <i>0.375</i> | 8.0 | <i>0.315</i> | 12.2 | <i>0.480</i> | 12.7 | <i>0.500</i> | 64.3 | <i>2.531</i> |
| WP-095095-10-9 | 10,000 | 7 | 9.5 | <i>0.375</i> | 9.5 | <i>0.375</i> | 11.1 | <i>0.437</i> | 12.7 | <i>0.500</i> | 82.1 | <i>3.230</i> |

* NOTE: Standard Format Not Compatible with T200 Printers

WP White polyester labels

Product dimensions

| Product order code | Package quantity | Labels across | Label width (A) | | Label height (B) | | Horizontal repeat (C) | | Vertical repeat (D) | | Web width (E) | |
|--------------------|------------------|---------------|-----------------|---------------|------------------|---------------|-----------------------|---------------|---------------------|---------------|---------------|---------------|
| | | | mm | <i>inches</i> | mm | <i>inches</i> | mm | <i>inches</i> | mm | <i>inches</i> | mm | <i>inches</i> |
| WP-127111-10-9 | 10,000 | 5 | 12.7 | <i>0.500</i> | 11.1 | <i>0.437</i> | 16.8 | <i>0.662</i> | 14.3 | <i>0.563</i> | 86.0 | <i>3.380</i> |
| WP-127127-10-9 | 10,000 | 5 | 12.7 | <i>0.500</i> | 12.7 | <i>0.500</i> | 15.9 | <i>0.625</i> | 15.9 | <i>0.625</i> | 82.6 | <i>3.250</i> |
| * WP-165051-25-9 | 25,000 | 4 | 16.5 | <i>0.650</i> | 5.1 | <i>0.200</i> | 17.8 | <i>0.700</i> | 8.3 | <i>0.325</i> | 75.8 | <i>2.990</i> |
| WP-165102-10-9 | 10,000 | 5 | 16.5 | <i>0.650</i> | 10.2 | <i>0.400</i> | 19.1 | <i>0.750</i> | 13.8 | <i>0.545</i> | 99.1 | <i>3.900</i> |
| WP-171171-10-9 | 10,000 | 5 | 17.1 | <i>0.674</i> | 17.1 | <i>0.674</i> | 19.7 | <i>0.774</i> | 20.3 | <i>0.800</i> | 101.8 | <i>4.006</i> |
| * WP-178095-10-9 | 10,000 | 4 | 17.8 | <i>0.700</i> | 9.5 | <i>0.375</i> | 19.1 | <i>0.750</i> | 12.7 | <i>0.500</i> | 80.9 | <i>3.190</i> |
| * WP-191064-10-9 | 10,000 | 4 | 19.1 | <i>0.750</i> | 6.4 | <i>0.250</i> | 21.6 | <i>0.850</i> | 9.5 | <i>0.375</i> | 89.9 | <i>3.540</i> |
| WP-191114-15-9 | 15,000 | 3 | 19.1 | <i>0.750</i> | 11.4 | <i>0.450</i> | 22.2 | <i>0.875</i> | 14.7 | <i>0.579</i> | 69.5 | <i>2.736</i> |
| * WP-203127-10-9 | 10,000 | 4 | 20.3 | <i>0.800</i> | 12.7 | <i>0.500</i> | 22.9 | <i>0.900</i> | 15.9 | <i>0.625</i> | 94.6 | <i>3.730</i> |
| WP-229064-10-9 | 10,000 | 3 | 22.9 | <i>0.900</i> | 6.4 | <i>0.250</i> | 28.6 | <i>1.125</i> | 9.5 | <i>0.375</i> | 86.0 | <i>3.390</i> |
| WP-254045-10-9 | 10,000 | 3 | 25.4 | <i>1.000</i> | 4.6 | <i>0.180</i> | 31.8 | <i>1.250</i> | 8.5 | <i>0.333</i> | 95.3 | <i>3.750</i> |
| WP-254064-10-9 | 10,000 | 3 | 25.4 | <i>1.000</i> | 6.4 | <i>0.250</i> | 27.9 | <i>1.100</i> | 9.5 | <i>0.375</i> | 87.3 | <i>3.436</i> |
| WP-254097-10-9 | 10,000 | 3 | 25.4 | <i>1.000</i> | 9.7 | <i>0.380</i> | 27.9 | <i>1.100</i> | 12.7 | <i>0.500</i> | 87.4 | <i>3.440</i> |
| WP-254127-10-9 | 10,000 | 3 | 25.4 | <i>1.000</i> | 12.7 | <i>0.500</i> | 27.9 | <i>1.100</i> | 16.9 | <i>0.666</i> | 87.4 | <i>3.440</i> |
| WP-254254-10-9 | 10,000 | 3 | 25.4 | <i>1.000</i> | 25.4 | <i>1.000</i> | 27.9 | <i>1.100</i> | 28.6 | <i>1.125</i> | 87.4 | <i>3.440</i> |
| * WP-305047-10-9 | 10,000 | 2 | 30.5 | <i>1.200</i> | 4.7 | <i>0.185</i> | 33.0 | <i>1.300</i> | 7.8 | <i>0.306</i> | 69.5 | <i>2.736</i> |
| WP-318064-10-9 | 10,000 | 1 | 31.8 | <i>1.250</i> | 6.4 | <i>0.250</i> | N/A | N/A | 9.5 | <i>0.375</i> | 37.9 | <i>1.490</i> |
| WP-318097-10-9 | 10,000 | 1 | 31.8 | <i>1.250</i> | 9.7 | <i>0.380</i> | N/A | N/A | 12.7 | <i>0.500</i> | 37.8 | <i>1.488</i> |
| WP-381064-10-9 | 10,000 | 1 | 38.1 | <i>1.500</i> | 6.4 | <i>0.250</i> | N/A | N/A | 9.5 | <i>0.375</i> | 44.5 | <i>1.750</i> |
| * WP-381127-5-9 | 5,000 | 2 | 38.1 | <i>1.500</i> | 12.7 | <i>0.500</i> | 44.2 | <i>1.740</i> | 15.9 | <i>0.630</i> | 88.2 | <i>3.470</i> |
| WP-381191-5-9 | 5,000 | 2 | 38.1 | <i>1.500</i> | 19.1 | <i>0.750</i> | 43.2 | <i>1.700</i> | 22.2 | <i>0.875</i> | 87.6 | <i>3.450</i> |
| * WP-381381-2.5-9 | 2,500 | 2 | 38.1 | <i>1.500</i> | 38.1 | <i>1.500</i> | 44.5 | <i>1.750</i> | 40.8 | <i>1.610</i> | 88.9 | <i>3.500</i> |
| * WP-381635-5-9 | 5,000 | 2 | 38.1 | <i>1.500</i> | 63.5 | <i>2.500</i> | 40.6 | <i>1.600</i> | 66.7 | <i>2.630</i> | 84.7 | <i>3.340</i> |
| * WP-406254-1.5-9 | 1,500 | 2 | 40.6 | <i>1.600</i> | 25.4 | <i>1.000</i> | 55.9 | <i>2.200</i> | 38.1 | <i>1.500</i> | 102.9 | <i>4.050</i> |
| WP-445064-10-9 | 10,000 | 1 | 44.5 | <i>1.750</i> | 6.4 | <i>0.250</i> | N/A | N/A | 9.5 | <i>0.375</i> | 50.4 | <i>1.986</i> |
| WP-445102-5-9 | 5,000 | 1 | 44.5 | <i>1.750</i> | 10.2 | <i>0.400</i> | N/A | N/A | 12.7 | <i>0.500</i> | 50.4 | <i>1.986</i> |
| WP-445445-2-9 | 2,000 | 1 | 44.5 | <i>1.750</i> | 44.5 | <i>1.750</i> | N/A | N/A | 47.6 | <i>1.875</i> | 50.4 | <i>1.986</i> |
| WP-478175-5-9 | 5,000 | 1 | 47.8 | <i>1.880</i> | 17.5 | <i>0.690</i> | N/A | N/A | 24.4 | <i>0.962</i> | 66.0 | <i>2.600</i> |
| WP-508064-10-9 | 10,000 | 1 | 50.8 | <i>2.000</i> | 6.4 | <i>0.250</i> | N/A | N/A | 9.5 | <i>0.375</i> | 56.9 | <i>2.240</i> |
| WP-508095-5-9 | 5,000 | 1 | 50.8 | <i>2.000</i> | 9.5 | <i>0.375</i> | N/A | N/A | 12.7 | <i>0.500</i> | 57.2 | <i>2.250</i> |
| WP-508127-5-9 | 5,000 | 1 | 50.8 | <i>2.000</i> | 12.7 | <i>0.500</i> | N/A | N/A | 15.9 | <i>0.625</i> | 56.9 | <i>2.240</i> |
| WP-508254-5-9 | 5,000 | 1 | 50.8 | <i>2.000</i> | 25.4 | <i>1.000</i> | N/A | N/A | 28.6 | <i>1.125</i> | 57.2 | <i>2.250</i> |
| WP-508318-2.5-9 | 2,500 | 1 | 50.8 | <i>2.000</i> | 31.8 | <i>1.250</i> | N/A | N/A | 34.9 | <i>1.375</i> | 56.9 | <i>2.240</i> |
| WP-508508-3-9 | 3,000 | 1 | 50.8 | <i>2.000</i> | 50.8 | <i>2.000</i> | N/A | N/A | 54.6 | <i>2.150</i> | 54.0 | <i>2.130</i> |
| WP-523841-1.5-9 | 1,500 | 1 | 52.3 | <i>2.060</i> | 84.1 | <i>3.310</i> | N/A | N/A | 88.9 | <i>3.500</i> | 58.2 | <i>2.290</i> |
| WP-610419-2.5-9 | 2,500 | 1 | 61.0 | <i>2.400</i> | 41.9 | <i>1.650</i> | N/A | N/A | 45.5 | <i>1.792</i> | 67.3 | <i>2.650</i> |
| WP-699191-5-9 | 5,000 | 1 | 69.9 | <i>2.750</i> | 19.1 | <i>0.750</i> | N/A | N/A | 23.3 | <i>0.917</i> | 76.2 | <i>3.000</i> |
| WP-699254-5-9 | 5,000 | 1 | 69.9 | <i>2.750</i> | 25.4 | <i>1.000</i> | N/A | N/A | 28.6 | <i>1.125</i> | 76.2 | <i>3.000</i> |
| WP-762254-5-9 | 5,000 | 1 | 76.2 | <i>3.000</i> | 25.4 | <i>1.000</i> | N/A | N/A | 28.6 | <i>1.125</i> | 82.3 | <i>3.240</i> |
| WP-762381-2.5-9 | 2,500 | 1 | 76.2 | <i>3.000</i> | 38.1 | <i>1.500</i> | N/A | N/A | 41.3 | <i>1.625</i> | 82.3 | <i>3.240</i> |
| WP-762508-2.5-9 | 2,500 | 1 | 76.2 | <i>3.000</i> | 50.8 | <i>2.000</i> | N/A | N/A | 54.0 | <i>2.125</i> | 82.6 | <i>3.240</i> |
| WP-762127-1-9 | 1,000 | 1 | 76.2 | <i>3.000</i> | 127.0 | <i>5.000</i> | N/A | N/A | 129.5 | <i>5.100</i> | 79.4 | <i>3.130</i> |
| WP-101508-2.5-9 | 2,500 | 1 | 101.6 | <i>4.000</i> | 50.8 | <i>2.000</i> | N/A | N/A | 54.6 | <i>2.150</i> | 104.1 | <i>4.100</i> |
| WP-101635-2.5-9 | 2,500 | 1 | 101.6 | <i>4.000</i> | 63.5 | <i>2.500</i> | N/A | N/A | 66.7 | <i>2.625</i> | 107.7 | <i>4.240</i> |
| WP-101762-1.8-9 | 1,800 | 1 | 101.6 | <i>4.000</i> | 76.2 | <i>3.000</i> | N/A | N/A | 79.4 | <i>3.125</i> | 104.1 | <i>4.100</i> |
| WP-101101-1.3-9 | 1,300 | 1 | 101.6 | <i>4.000</i> | 101.6 | <i>4.000</i> | N/A | N/A | 104.8 | <i>4.125</i> | 104.1 | <i>4.100</i> |
| WP-101165-0.85-9 | 850 | 1 | 101.6 | <i>4.000</i> | 165.1 | <i>6.500</i> | N/A | N/A | 168.3 | <i>6.680</i> | 104.9 | <i>4.130</i> |

* NOTE: Standard Format Not Compatible with T200 Printers

CP Clear polyester labels

CP is a thermal transfer printable clear polyester film with a permanent acrylic adhesive and can be used as an over laminate. Designed for rating plates, nameplates, equipment labels, serial number plates and general labeling applications that require a high durability transparent label. For reliable print performance and durability, use with Tyco Electronics 1330-0607 ribbon.

Features and benefits

- Thermal transfer printable
- Ideal for general labeling applications



Specifications/approvals

| | |
|----------------------------|---------------------------------|
| Tyco Electronics | TTDS-083 |
| Adhesive | Permanent acrylic |
| Service temperature | -40°C to +150°C -40°F to +302°F |
| Recommended Printer | T300 Series printers |
| Recommended Ribbon | 1330-0607-10* |

**Alternative printers and ribbons are available for special applications. Contact Tyco Electronics Identification for more information.*

Part numbering system

CP-762508-25-X



Ordering information



Product dimensions

| Product order code | Package quantity | Labels across | Label width (A) | | Label height (B) | | Horizontal repeat (C) | | Vertical repeat (D) | | Web width (E) | |
|--------------------|------------------|---------------|-----------------|---------------|------------------|---------------|-----------------------|---------------|---------------------|---------------|---------------|---------------|
| | | | mm | <i>inches</i> | mm | <i>inches</i> | mm | <i>inches</i> | mm | <i>inches</i> | mm | <i>inches</i> |
| CP-165051-25-X | 25,000 | 4 | 16.5 | <i>0.650</i> | 5.1 | <i>0.200</i> | 17.8 | <i>0.700</i> | 8.3 | <i>0.325</i> | 75.8 | <i>2.990</i> |
| CP-191064-10-X | 10,000 | 4 | 19.1 | <i>0.750</i> | 6.4 | <i>0.250</i> | 21.6 | <i>0.850</i> | 9.5 | <i>0.375</i> | 89.9 | <i>3.540</i> |
| CP-229064-10-X | 10,000 | 3 | 22.9 | <i>0.900</i> | 6.4 | <i>0.250</i> | 28.6 | <i>1.125</i> | 9.5 | <i>0.375</i> | 86.0 | <i>3.390</i> |

***NOTE: Standard Format Not Compatible with T200 Printers**

CP Clear polyester labels

Product dimensions

| Product order code | Package quantity | Labels across | Label width (A) | | Label height (B) | | Horizontal repeat (C) | | Vertical repeat (D) | | Web width (E) | |
|--------------------|------------------|---------------|-----------------|---------------|------------------|---------------|-----------------------|---------------|---------------------|---------------|---------------|---------------|
| | | | mm | <i>inches</i> | mm | <i>inches</i> | mm | <i>inches</i> | mm | <i>inches</i> | mm | <i>inches</i> |
| CP-254097-10-X | 10,000 | 3 | 25.4 | <i>1.000</i> | 9.7 | <i>0.380</i> | 27.9 | <i>1.100</i> | 12.7 | <i>0.500</i> | 87.4 | <i>3.440</i> |
| CP-254127-10-X | 10,000 | 3 | 25.4 | <i>1.000</i> | 12.7 | <i>0.500</i> | 27.9 | <i>1.100</i> | 16.9 | <i>0.666</i> | 87.4 | <i>3.440</i> |
| CP-381064-10-X | 10,000 | 1 | 38.1 | <i>1.500</i> | 6.4 | <i>0.250</i> | N/A | <i>N/A</i> | 9.5 | <i>0.375</i> | 44.5 | <i>1.750</i> |
| CP-381127-5-X | 5,000 | 2 | 38.1 | <i>1.500</i> | 12.7 | <i>0.500</i> | 44.2 | <i>1.738</i> | 15.9 | <i>0.625</i> | 88.2 | <i>3.472</i> |
| CP-381191-5-X | 5,000 | 2 | 38.1 | <i>1.500</i> | 19.1 | <i>0.750</i> | 43.2 | <i>1.700</i> | 22.2 | <i>0.875</i> | 87.6 | <i>3.450</i> |
| CP-406254-1.5-X | 1,500 | 2 | 40.6 | <i>1.600</i> | 25.4 | <i>1.000</i> | 55.9 | <i>2.200</i> | 38.1 | <i>1.500</i> | 102.9 | <i>4.050</i> |
| CP-508127-5-X | 5,000 | 1 | 50.8 | <i>2.000</i> | 12.7 | <i>0.500</i> | N/A | <i>N/A</i> | 15.9 | <i>0.625</i> | 56.9 | <i>2.240</i> |
| CP-508254-5-X | 5,000 | 1 | 50.8 | <i>2.000</i> | 25.4 | <i>1.000</i> | N/A | <i>N/A</i> | 28.6 | <i>1.125</i> | 57.2 | <i>2.250</i> |
| CP-508318-2.5-X | 2,500 | 1 | 50.8 | <i>2.000</i> | 31.8 | <i>1.250</i> | N/A | <i>N/A</i> | 34.9 | <i>1.375</i> | 56.9 | <i>2.240</i> |
| CP-699254-5-X | 5,000 | 1 | 69.9 | <i>2.750</i> | 25.4 | <i>1.000</i> | N/A | <i>N/A</i> | 28.6 | <i>1.125</i> | 76.2 | <i>3.000</i> |
| CP-762254-5-X | 5,000 | 1 | 76.2 | <i>3.000</i> | 25.4 | <i>1.000</i> | N/A | <i>N/A</i> | 28.6 | <i>1.125</i> | 82.3 | <i>3.240</i> |
| CP-762508-2.5-X | 2,500 | 1 | 76.2 | <i>3.000</i> | 50.8 | <i>2.000</i> | N/A | <i>N/A</i> | 54.0 | <i>2.125</i> | 82.3 | <i>3.240</i> |
| CP-101635-2.5-X | 2,500 | 1 | 101.6 | <i>4.000</i> | 63.5 | <i>2.500</i> | N/A | <i>N/A</i> | 66.7 | <i>2.625</i> | 107.7 | <i>4.240</i> |

* NOTE: Standard Format Not Compatible with T200 Printers

HW High tack white polyester labels

Tyco Electronics HW is a thermal transfer printable white polyester film with a high tack permanent acrylic adhesive. Designed for application to rough surfaces or where increased adhesion is required, HW is also excellent for bar-coding, electronic PCB, component and general labeling applications. The high tack adhesion of HW will bond to the most demanding surfaces, including textured and contoured surfaces. For reliable print performance and durability, use with Tyco Electronics 1330-0607 ribbon.



Features and benefits

- Thermal transfer printable
- Aggressive adhesive for textured and powdered surfaces
- UL Listed



Specifications/Approvals

Tyco Electronics TTDS-076
 Industry UL MH17292 Group PGJ12

Adhesive Permanent acrylic

Service temperature -40°C to +150°C -40°F to +302°F

Recommended printer T300 Series printers

Recommended ribbon 1330-0607-10*

**Alternative printers and ribbons are available for special applications. Contact Tyco Electronics Identification for more information.*

Part numbering system

HW-064064-25-9



Ordering information



Product dimensions

| Product order code | Package quantity | Labels across | Label width (A) | | Label height (B) | | Horizontal repeat (C) | | Vertical repeat (D) | | Web width (E) | |
|--------------------|------------------|---------------|-----------------|---------------|------------------|---------------|-----------------------|---------------|---------------------|---------------|---------------|---------------|
| | | | mm | <i>inches</i> | mm | <i>inches</i> | mm | <i>inches</i> | mm | <i>inches</i> | mm | <i>inches</i> |
| HW-040040-25-9 | 25,000 | 20 | 4.0 | <i>0.157</i> | 4.0 | <i>0.157</i> | 4.0 | <i>0.157</i> | 7.2 | <i>0.281</i> | 86.0 | <i>3.380</i> |
| HW-064064-25-9 | 25,000 | 12 | 6.4 | <i>0.250</i> | 6.4 | <i>0.250</i> | 6.4 | <i>0.250</i> | 9.5 | <i>0.375</i> | 82.2 | <i>3.240</i> |
| *HW-080080-10-9 | 10,000 | 8 | 8.0 | <i>0.315</i> | 8.0 | <i>0.315</i> | 9.9 | <i>0.390</i> | 13.3 | <i>0.525</i> | 83.3 | <i>3.280</i> |
| HW-089047-10-9 | 10,000 | 5 | 8.9 | <i>0.350</i> | 4.7 | <i>0.186</i> | 11.4 | <i>0.450</i> | 7.9 | <i>0.313</i> | 60.6 | <i>2.386</i> |
| HW-095080-25-9 | 25,000 | 5 | 9.5 | <i>0.375</i> | 8.0 | <i>0.315</i> | 12.2 | <i>0.480</i> | 12.7 | <i>0.500</i> | 64.3 | <i>2.531</i> |
| HW-095095-10-9 | 10,000 | 7 | 9.5 | <i>0.375</i> | 9.5 | <i>0.375</i> | 11.1 | <i>0.437</i> | 12.7 | <i>0.500</i> | 82.1 | <i>3.230</i> |

*NOTE: Standard Format Not Compatible with T200 Printers

HW High tack white polyester labels

Product dimensions

| Product order code | Package quantity | Labels across | Label width (A) | | Label height (B) | | Horizontal repeat (C) | | Vertical repeat (D) | | Web width (E) | |
|--------------------|------------------|---------------|-----------------|---------------|------------------|---------------|-----------------------|---------------|---------------------|---------------|---------------|---------------|
| | | | mm | <i>inches</i> | mm | <i>inches</i> | mm | <i>inches</i> | mm | <i>inches</i> | mm | <i>inches</i> |
| HW-127111-10-9 | 10,000 | 5 | 12.7 | <i>0.500</i> | 11.1 | <i>0.437</i> | 16.8 | <i>0.662</i> | 14.3 | <i>0.563</i> | 86.0 | <i>3.380</i> |
| HW-127127-10-9 | 10,000 | 5 | 12.7 | <i>0.500</i> | 12.7 | <i>0.500</i> | 15.9 | <i>0.625</i> | 15.9 | <i>0.625</i> | 82.6 | <i>3.250</i> |
| HW-165051-25-9 | 25,000 | 4 | 16.5 | <i>0.650</i> | 5.1 | <i>0.200</i> | 17.8 | <i>0.700</i> | 8.3 | <i>0.325</i> | 75.8 | <i>2.990</i> |
| HW-165102-10-9 | 10,000 | 5 | 16.5 | <i>0.650</i> | 10.2 | <i>0.400</i> | 19.1 | <i>0.750</i> | 13.8 | <i>0.545</i> | 99.1 | <i>3.900</i> |
| HW-171171-10-9 | 10,000 | 5 | 17.1 | <i>0.674</i> | 17.1 | <i>0.674</i> | 19.7 | <i>0.774</i> | 20.3 | <i>0.800</i> | 101.8 | <i>4.006</i> |
| HW-178095-10-9 | 10,000 | 4 | 17.8 | <i>0.700</i> | 9.5 | <i>0.375</i> | 19.1 | <i>0.750</i> | 12.7 | <i>0.500</i> | 80.9 | <i>3.190</i> |
| HW-191064-10-9 | 10,000 | 4 | 19.1 | <i>0.750</i> | 6.4 | <i>0.250</i> | 21.6 | <i>0.850</i> | 9.5 | <i>0.375</i> | 89.9 | <i>3.540</i> |
| HW-191114-15-9 | 15,000 | 3 | 19.1 | <i>0.750</i> | 11.4 | <i>0.450</i> | 22.2 | <i>0.875</i> | 14.7 | <i>0.579</i> | 69.5 | <i>2.736</i> |
| HW-203127-10-9 | 10,000 | 4 | 20.3 | <i>0.800</i> | 12.7 | <i>0.500</i> | 22.9 | <i>0.900</i> | 15.9 | <i>0.625</i> | 94.6 | <i>3.730</i> |
| HW-229064-10-9 | 10,000 | 3 | 22.9 | <i>0.900</i> | 6.4 | <i>0.250</i> | 28.6 | <i>1.125</i> | 9.5 | <i>0.375</i> | 86.0 | <i>3.390</i> |
| HW-254045-10-9 | 10,000 | 3 | 25.4 | <i>1.000</i> | 4.6 | <i>0.180</i> | 31.8 | <i>1.250</i> | 8.5 | <i>0.333</i> | 95.3 | <i>3.750</i> |
| HW-254064-10-9 | 10,000 | 3 | 25.4 | <i>1.000</i> | 6.4 | <i>0.250</i> | 27.9 | <i>1.100</i> | 9.5 | <i>0.375</i> | 87.3 | <i>3.436</i> |
| HW-254097-10-9 | 10,000 | 3 | 25.4 | <i>1.000</i> | 9.7 | <i>0.380</i> | 27.9 | <i>1.100</i> | 12.7 | <i>0.500</i> | 87.4 | <i>3.440</i> |
| HW-254127-10-9 | 10,000 | 3 | 25.4 | <i>1.000</i> | 12.7 | <i>0.500</i> | 27.9 | <i>1.100</i> | 16.9 | <i>0.666</i> | 87.4 | <i>3.440</i> |
| HW-254254-10-9 | 10,000 | 3 | 25.4 | <i>1.000</i> | 25.4 | <i>1.000</i> | 27.9 | <i>1.100</i> | 28.6 | <i>1.125</i> | 87.4 | <i>3.440</i> |
| HW-305047-10-9 | 10,000 | 2 | 30.5 | <i>1.200</i> | 4.7 | <i>0.185</i> | 33.0 | <i>1.300</i> | 7.8 | <i>0.306</i> | 69.5 | <i>2.736</i> |
| HW-318064-10-9 | 10,000 | 1 | 31.8 | <i>1.250</i> | 6.4 | <i>0.250</i> | N/A | N/A | 9.5 | <i>0.375</i> | 37.9 | <i>1.490</i> |
| HW-318097-10-9 | 10,000 | 1 | 31.8 | <i>1.250</i> | 9.7 | <i>0.380</i> | N/A | N/A | 12.7 | <i>0.500</i> | 37.8 | <i>1.488</i> |
| HW-381064-10-9 | 10,000 | 1 | 38.1 | <i>1.500</i> | 6.4 | <i>0.250</i> | N/A | N/A | 9.5 | <i>0.375</i> | 44.5 | <i>1.750</i> |
| HW-381127-5-9 | 5,000 | 2 | 38.1 | <i>1.500</i> | 12.7 | <i>0.500</i> | 44.2 | <i>1.738</i> | 15.9 | <i>0.625</i> | 88.2 | <i>3.472</i> |
| HW-381191-5-9 | 5,000 | 2 | 38.1 | <i>1.500</i> | 19.1 | <i>0.750</i> | 43.2 | <i>1.700</i> | 22.2 | <i>0.875</i> | 87.6 | <i>3.450</i> |
| HW-381381-2.5-9 | 2,500 | 2 | 38.1 | <i>1.500</i> | 38.1 | <i>1.500</i> | 44.5 | <i>1.750</i> | 40.8 | <i>1.607</i> | 88.9 | <i>3.500</i> |
| HW-381635-5-9 | 5,000 | 2 | 38.1 | <i>1.500</i> | 63.5 | <i>2.500</i> | 40.6 | <i>1.600</i> | 66.7 | <i>2.625</i> | 84.7 | <i>3.338</i> |
| HW-406254-1.5-9 | 1,500 | 2 | 40.6 | <i>1.600</i> | 25.4 | <i>1.000</i> | 55.9 | <i>2.200</i> | 38.1 | <i>1.500</i> | 102.9 | <i>4.050</i> |
| HW-445064-10-9 | 10,000 | 1 | 44.5 | <i>1.750</i> | 6.4 | <i>0.250</i> | N/A | N/A | 9.5 | <i>0.375</i> | 50.4 | <i>1.986</i> |
| HW-445102-5-9 | 5,000 | 1 | 44.5 | <i>1.750</i> | 10.2 | <i>0.400</i> | N/A | N/A | 12.7 | <i>0.500</i> | 50.4 | <i>1.986</i> |
| HW-445445-2-9 | 2,000 | 1 | 44.5 | <i>1.750</i> | 44.5 | <i>1.750</i> | N/A | N/A | 47.6 | <i>1.875</i> | 50.4 | <i>1.986</i> |
| HW-478175-5-9 | 5,000 | 1 | 47.8 | <i>1.880</i> | 17.5 | <i>0.690</i> | N/A | N/A | 24.4 | <i>0.962</i> | 66.0 | <i>2.600</i> |
| HW-508064-10-9 | 10,000 | 1 | 50.8 | <i>2.000</i> | 6.4 | <i>0.250</i> | N/A | N/A | 9.5 | <i>0.375</i> | 56.9 | <i>2.240</i> |
| HW-508095-5-9 | 5,000 | 1 | 50.8 | <i>2.000</i> | 9.5 | <i>0.375</i> | N/A | N/A | 12.7 | <i>0.500</i> | 57.2 | <i>2.250</i> |
| HW-508127-5-9 | 5,000 | 1 | 50.8 | <i>2.000</i> | 12.7 | <i>0.500</i> | N/A | N/A | 15.9 | <i>0.625</i> | 56.9 | <i>2.240</i> |
| HW-508254-5-9 | 5,000 | 1 | 50.8 | <i>2.000</i> | 25.4 | <i>1.000</i> | N/A | N/A | 28.6 | <i>1.125</i> | 57.2 | <i>2.250</i> |
| HW-508318-2.5-9 | 2,500 | 1 | 50.8 | <i>2.000</i> | 31.8 | <i>1.250</i> | N/A | N/A | 34.9 | <i>1.375</i> | 56.9 | <i>2.240</i> |
| HW-508508-3-9 | 3,000 | 1 | 50.8 | <i>2.000</i> | 50.8 | <i>2.000</i> | N/A | N/A | 54.6 | <i>2.150</i> | 54.0 | <i>2.130</i> |
| HW-523841-1.5-9 | 1,500 | 1 | 52.3 | <i>2.060</i> | 84.1 | <i>3.310</i> | N/A | N/A | 88.9 | <i>3.500</i> | 58.2 | <i>2.290</i> |
| HW-610419-2.5-9 | 2,500 | 1 | 61.0 | <i>2.400</i> | 41.9 | <i>1.650</i> | N/A | N/A | 45.5 | <i>1.792</i> | 67.3 | <i>2.650</i> |
| HW-699191-5-9 | 5,000 | 1 | 69.9 | <i>2.750</i> | 19.1 | <i>0.750</i> | N/A | N/A | 23.3 | <i>0.917</i> | 76.2 | <i>3.000</i> |
| HW-699254-5-9 | 5,000 | 1 | 69.9 | <i>2.750</i> | 25.4 | <i>1.000</i> | N/A | N/A | 28.6 | <i>1.125</i> | 76.2 | <i>3.000</i> |
| HW-762381-2.5-9 | 2,500 | 1 | 76.2 | <i>3.000</i> | 38.1 | <i>1.500</i> | N/A | N/A | 41.3 | <i>1.625</i> | 82.3 | <i>3.240</i> |
| HW-762508-2.5-9 | 2,500 | 1 | 76.2 | <i>3.000</i> | 50.8 | <i>2.000</i> | N/A | N/A | 54.0 | <i>2.125</i> | 82.6 | <i>3.240</i> |
| HW-762127-1-9 | 1,000 | 1 | 76.2 | <i>3.000</i> | 127.0 | <i>5.000</i> | N/A | N/A | 129.5 | <i>5.100</i> | 79.4 | <i>3.130</i> |
| HW-101508-2.5-9 | 2,500 | 1 | 101.6 | <i>4.000</i> | 50.8 | <i>2.000</i> | N/A | N/A | 54.6 | <i>2.150</i> | 104.1 | <i>4.100</i> |
| HW-101635-2.5-9 | 2,500 | 1 | 101.6 | <i>4.000</i> | 63.5 | <i>2.500</i> | N/A | N/A | 66.7 | <i>2.625</i> | 107.7 | <i>4.240</i> |
| HW-101762-1.8-9 | 1,800 | 1 | 101.6 | <i>4.000</i> | 76.2 | <i>3.000</i> | N/A | N/A | 79.4 | <i>3.125</i> | 104.1 | <i>4.100</i> |
| HW-101101-1.3-9 | 1,300 | 1 | 101.6 | <i>4.000</i> | 101.6 | <i>4.000</i> | N/A | N/A | 104.8 | <i>4.125</i> | 104.1 | <i>4.100</i> |
| HW-101165-0.85-9 | 850 | 1 | 101.6 | <i>4.000</i> | 165.1 | <i>6.500</i> | N/A | N/A | 168.3 | <i>6.680</i> | 104.9 | <i>4.130</i> |

* NOTE: Standard Format Not Compatible with T200 Printers

HM High tack metalized polyester labels

Tyco Electronics HM is a thermal transfer printable metalized polyester film with a high tack permanent acrylic adhesive, designed for application to rough surfaces or where increased adhesion is required, and applications that require a metal look such as rating plates. The high tack adhesion of HM will bond to the most demanding surfaces, including textured and contoured surfaces. For reliable print performance and durability, use with Tyco Electronics 1330-0607 series ribbon.



Features and benefits

- Thermal transfer printable
- Aggressive adhesive which permanently bonds to both high and low surface energy plastics
- UL Listed



Specifications/Approvals

Tyco Electronics TTDS-075
 Industry UL MH17292 Group PGJ12

Adhesive Permanent acrylic

Service temperature -40°C to +150°C -40°F to +302°F

Recommended printer T300 Series printers

Recommended ribbon 1330-0607-10*

**Alternative printers and ribbons are available for special applications. Contact Tyco Electronics Identification for more information.*

Part numbering system

HM-080080-10-8A



Ordering information



Product dimensions

| Product order code | Package quantity | Labels across | Label width (A) | | Label height (B) | | Horizontal repeat (C) | | Vertical repeat (D) | | Web width (E) | |
|--------------------|------------------|---------------|-----------------|---------------|------------------|---------------|-----------------------|---------------|---------------------|---------------|---------------|---------------|
| | | | mm | <i>inches</i> | mm | <i>inches</i> | mm | <i>inches</i> | mm | <i>inches</i> | mm | <i>inches</i> |
| HM-040040-25-8A | 25,000 | 20 | 4.0 | <i>0.157</i> | 4.0 | <i>0.157</i> | 4.0 | <i>0.157</i> | 7.2 | <i>0.281</i> | 86.0 | <i>3.380</i> |
| HM-064064-25-8A | 25,000 | 12 | 6.4 | <i>0.250</i> | 6.4 | <i>0.250</i> | 6.4 | <i>0.250</i> | 9.5 | <i>0.375</i> | 82.2 | <i>3.240</i> |
| HM-080080-10-8A | 10,000 | 8 | 8.0 | <i>0.315</i> | 8.0 | <i>0.315</i> | 9.9 | <i>0.390</i> | 13.3 | <i>0.525</i> | 83.3 | <i>3.280</i> |
| HM-089047-10-8A | 10,000 | 5 | 8.9 | <i>0.350</i> | 4.7 | <i>0.185</i> | 11.4 | <i>0.450</i> | 7.9 | <i>0.313</i> | 60.6 | <i>2.386</i> |
| HM-095080-25-8A | 25,000 | 5 | 9.5 | <i>0.375</i> | 8.0 | <i>0.315</i> | 12.2 | <i>0.480</i> | 12.7 | <i>0.500</i> | 64.3 | <i>2.531</i> |
| HM-095095-10-8A | 10,000 | 7 | 9.5 | <i>0.375</i> | 9.5 | <i>0.375</i> | 11.1 | <i>0.437</i> | 12.7 | <i>0.500</i> | 82.1 | <i>3.230</i> |

* NOTE: Standard Format Not Compatible with T200 Printers

HM High tack metalized polyester labels

Product dimensions

| Product order code | Package quantity | Labels across | Label width (A) | | Label height (B) | | Horizontal repeat (C) | | Vertical repeat (D) | | Web width (E) | |
|--------------------|------------------|---------------|-----------------|---------------|------------------|---------------|-----------------------|---------------|---------------------|---------------|---------------|---------------|
| | | | mm | <i>inches</i> | mm | <i>inches</i> | mm | <i>inches</i> | mm | <i>inches</i> | mm | <i>inches</i> |
| HM-127111-10-8A | 10,000 | 5 | 12.7 | <i>0.500</i> | 11.1 | <i>0.437</i> | 16.8 | <i>0.662</i> | 14.3 | <i>0.563</i> | 86.0 | <i>3.380</i> |
| HM-127127-10-8A | 10,000 | 5 | 12.7 | <i>0.500</i> | 12.7 | <i>0.500</i> | 15.9 | <i>0.625</i> | 15.9 | <i>0.625</i> | 82.6 | <i>3.250</i> |
| * HM-165051-25-8A | 25,000 | 4 | 16.5 | <i>0.650</i> | 5.1 | <i>0.200</i> | 17.8 | <i>0.700</i> | 8.3 | <i>0.325</i> | 75.8 | <i>2.990</i> |
| HM-165102-10-8A | 10,000 | 5 | 16.5 | <i>0.650</i> | 10.2 | <i>0.400</i> | 19.1 | <i>0.750</i> | 13.8 | <i>0.545</i> | 99.1 | <i>3.900</i> |
| HM-171171-10-8A | 10,000 | 5 | 17.1 | <i>0.674</i> | 17.1 | <i>0.674</i> | 19.7 | <i>0.774</i> | 20.3 | <i>0.800</i> | 101.8 | <i>4.006</i> |
| * HM-178095-10-8A | 10,000 | 4 | 17.8 | <i>0.700</i> | 9.5 | <i>0.375</i> | 19.1 | <i>0.750</i> | 12.7 | <i>0.500</i> | 80.9 | <i>3.190</i> |
| * HM-191064-10-8A | 10,000 | 4 | 19.1 | <i>0.750</i> | 6.4 | <i>0.250</i> | 21.6 | <i>0.850</i> | 9.5 | <i>0.375</i> | 89.9 | <i>3.540</i> |
| HM-191114-15-8A | 15,000 | 3 | 19.1 | <i>0.750</i> | 11.4 | <i>0.450</i> | 22.2 | <i>0.875</i> | 14.7 | <i>0.579</i> | 69.5 | <i>2.736</i> |
| * HM-203127-10-8A | 10,000 | 4 | 20.3 | <i>0.800</i> | 12.7 | <i>0.500</i> | 22.9 | <i>0.900</i> | 15.9 | <i>0.625</i> | 94.6 | <i>3.730</i> |
| HM-229064-10-8A | 10,000 | 3 | 22.9 | <i>0.900</i> | 6.4 | <i>0.250</i> | 28.6 | <i>1.125</i> | 9.5 | <i>0.375</i> | 86.0 | <i>3.390</i> |
| HM-254045-10-8A | 10,000 | 3 | 25.4 | <i>1.000</i> | 4.6 | <i>0.180</i> | 31.8 | <i>1.250</i> | 8.5 | <i>0.333</i> | 95.3 | <i>3.750</i> |
| HM-254064-10-8A | 10,000 | 3 | 25.4 | <i>1.000</i> | 6.4 | <i>0.250</i> | 27.9 | <i>1.100</i> | 9.5 | <i>0.375</i> | 87.3 | <i>3.436</i> |
| HM-254097-10-8A | 10,000 | 3 | 25.4 | <i>1.000</i> | 9.7 | <i>0.380</i> | 27.9 | <i>1.100</i> | 12.7 | <i>0.500</i> | 87.4 | <i>3.440</i> |
| HM-254127-10-8A | 10,000 | 3 | 25.4 | <i>1.000</i> | 12.7 | <i>0.500</i> | 27.9 | <i>1.100</i> | 16.9 | <i>0.666</i> | 87.4 | <i>3.440</i> |
| HM-254254-10-8A | 10,000 | 3 | 25.4 | <i>1.000</i> | 25.4 | <i>1.000</i> | 27.9 | <i>1.100</i> | 28.6 | <i>1.125</i> | 87.4 | <i>3.440</i> |
| * HM-305047-10-8A | 10,000 | 2 | 30.5 | <i>1.200</i> | 4.7 | <i>0.185</i> | 33.0 | <i>1.300</i> | 7.8 | <i>0.306</i> | 69.5 | <i>2.736</i> |
| HM-318064-10-8A | 10,000 | 1 | 31.8 | <i>1.250</i> | 6.4 | <i>0.250</i> | N/A | N/A | 9.5 | <i>0.375</i> | 37.9 | <i>1.490</i> |
| HM-318097-10-8A | 10,000 | 1 | 31.8 | <i>1.250</i> | 9.7 | <i>0.380</i> | N/A | N/A | 12.7 | <i>0.500</i> | 37.8 | <i>1.488</i> |
| HM-381020-10-8A | 10,000 | 1 | 38.1 | <i>1.500</i> | 2.0 | <i>0.080</i> | N/A | N/A | 10.7 | <i>0.423</i> | 44.1 | <i>1.740</i> |
| HM-381064-10-8A | 10,000 | 1 | 38.1 | <i>1.500</i> | 6.4 | <i>0.250</i> | N/A | N/A | 9.5 | <i>0.375</i> | 44.5 | <i>1.750</i> |
| * HM-381127-5-8A | 5,000 | 2 | 38.1 | <i>1.500</i> | 12.7 | <i>0.500</i> | 44.2 | <i>1.738</i> | 15.9 | <i>0.625</i> | 88.2 | <i>3.472</i> |
| HM-381191-5-8A | 5,000 | 2 | 38.1 | <i>1.500</i> | 19.1 | <i>0.750</i> | 43.2 | <i>1.700</i> | 22.2 | <i>0.875</i> | 87.6 | <i>3.450</i> |
| * HM-381381-2.5-8A | 2,500 | 2 | 38.1 | <i>1.500</i> | 38.1 | <i>1.500</i> | 44.5 | <i>1.750</i> | 40.8 | <i>1.607</i> | 88.9 | <i>3.500</i> |
| * HM-381635-5-8A | 5,000 | 2 | 38.1 | <i>1.500</i> | 63.5 | <i>2.500</i> | 40.6 | <i>1.600</i> | 66.7 | <i>2.625</i> | 84.7 | <i>3.336</i> |
| * HM-406254-1.5-8A | 1,500 | 2 | 40.6 | <i>1.600</i> | 25.4 | <i>1.000</i> | 55.9 | <i>2.200</i> | 38.1 | <i>1.500</i> | 102.9 | <i>4.050</i> |
| HM-445064-10-8A | 10,000 | 1 | 44.5 | <i>1.750</i> | 6.4 | <i>0.250</i> | N/A | N/A | 9.5 | <i>0.375</i> | 50.4 | <i>1.986</i> |
| HM-445102-5-8A | 5,000 | 1 | 44.5 | <i>1.750</i> | 10.2 | <i>0.400</i> | N/A | N/A | 12.7 | <i>0.500</i> | 50.4 | <i>1.986</i> |
| HM-445445-2-8A | 2,000 | 1 | 44.5 | <i>1.750</i> | 44.5 | <i>1.750</i> | N/A | N/A | 47.6 | <i>1.875</i> | 50.4 | <i>1.986</i> |
| HM-478175-5-8A | 5,000 | 1 | 47.8 | <i>1.880</i> | 17.5 | <i>0.690</i> | N/A | N/A | 24.4 | <i>0.962</i> | 66.0 | <i>2.600</i> |
| HM-508064-10-8A | 10,000 | 1 | 50.8 | <i>2.000</i> | 6.4 | <i>0.250</i> | N/A | N/A | 9.5 | <i>0.375</i> | 56.9 | <i>2.240</i> |
| HM-508095-5-8A | 5,000 | 1 | 50.8 | <i>2.000</i> | 9.5 | <i>0.375</i> | N/A | N/A | 12.7 | <i>0.500</i> | 57.2 | <i>2.250</i> |
| HM-508127-5-8A | 5,000 | 1 | 50.8 | <i>2.000</i> | 12.7 | <i>0.500</i> | N/A | N/A | 15.9 | <i>0.625</i> | 56.9 | <i>2.240</i> |
| HM-508254-5-8A | 5,000 | 1 | 50.8 | <i>2.000</i> | 25.4 | <i>1.000</i> | N/A | N/A | 28.6 | <i>1.125</i> | 57.2 | <i>2.250</i> |
| HM-508318-2.5-8A | 2,500 | 1 | 50.8 | <i>2.000</i> | 31.8 | <i>1.250</i> | N/A | N/A | 34.9 | <i>1.375</i> | 56.9 | <i>2.240</i> |
| HM-508508-3-8A | 3,000 | 1 | 50.8 | <i>2.000</i> | 50.8 | <i>2.000</i> | N/A | N/A | 54.6 | <i>2.150</i> | 54.0 | <i>2.130</i> |
| HM-523841-1.5-8A | 1,500 | 1 | 52.3 | <i>2.060</i> | 84.1 | <i>3.310</i> | N/A | N/A | 88.9 | <i>3.500</i> | 58.2 | <i>2.290</i> |
| HM-610419-2.5-8A | 2,500 | 1 | 61.0 | <i>2.400</i> | 41.9 | <i>1.650</i> | N/A | N/A | 45.5 | <i>1.792</i> | 67.3 | <i>2.650</i> |
| HM-699191-5-8A | 5,000 | 1 | 69.9 | <i>2.750</i> | 19.1 | <i>0.750</i> | N/A | N/A | 23.3 | <i>0.917</i> | 76.2 | <i>3.000</i> |
| HM-699254-5-8A | 5,000 | 1 | 69.9 | <i>2.750</i> | 25.4 | <i>1.000</i> | N/A | N/A | 28.6 | <i>1.125</i> | 76.2 | <i>3.000</i> |
| HM-762381-2.5-8A | 2,500 | 1 | 76.2 | <i>3.000</i> | 38.1 | <i>1.500</i> | N/A | N/A | 41.3 | <i>1.625</i> | 82.3 | <i>3.240</i> |
| HM-762508-2.5-8A | 2,500 | 1 | 76.2 | <i>3.000</i> | 50.8 | <i>2.000</i> | N/A | N/A | 54.0 | <i>2.125</i> | 82.6 | <i>3.240</i> |
| HM-762127-1-8A | 1,000 | 1 | 76.2 | <i>3.000</i> | 127.0 | <i>5.000</i> | N/A | N/A | 129.5 | <i>5.100</i> | 79.4 | <i>3.130</i> |
| HM-101508-2.5-8A | 2,500 | 1 | 101.6 | <i>4.000</i> | 50.8 | <i>2.000</i> | N/A | N/A | 54.6 | <i>2.150</i> | 104.1 | <i>4.100</i> |
| HM-101635-2.5-8A | 2,500 | 1 | 101.6 | <i>4.000</i> | 63.5 | <i>2.500</i> | N/A | N/A | 66.7 | <i>2.625</i> | 107.7 | <i>4.240</i> |
| HM-101762-1.8-8A | 1,800 | 1 | 101.6 | <i>4.000</i> | 76.2 | <i>3.000</i> | N/A | N/A | 79.4 | <i>3.125</i> | 104.1 | <i>4.100</i> |
| HM-101101-1.3-8A | 1,300 | 1 | 101.6 | <i>4.000</i> | 101.6 | <i>4.000</i> | N/A | N/A | 104.8 | <i>4.125</i> | 104.1 | <i>4.100</i> |
| HM-101165-0.85-8A | 850 | 1 | 101.6 | <i>4.000</i> | 165.1 | <i>6.500</i> | N/A | N/A | 168.3 | <i>6.680</i> | 104.9 | <i>4.130</i> |

* NOTE: Standard Format Not Compatible with T200 Printers

MP Metalized polyester labels

Tyco Electronics MP is a thermal transfer printable metalized polyester film with a permanent acrylic adhesive, designed for rating plates and other applications that require a metal look, such as nameplates, equipment labels, detailed product information labels and serial number plates. MP is UL Listed. Print performance and durability are reliable when used with Tyco Electronics 1330-0607 series ribbon.



Features and benefits

- Thermal transfer printable
- Metalized appearance
- Ideal for rating plate applications
- Several die-cut sizes available
- UL Listed



Specifications/Approvals

Tyco Electronics TTDS-074
 Industry UL MH17292 Group PGJ12

Adhesive Permanent acrylic

Service temperature -40°C to +150°F -40°F to +302°F

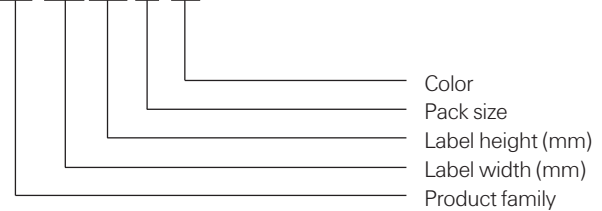
Recommended printer T300 Series printers

Recommended ribbon 1330-0607-10*

**Alternative printers and ribbons are available for special applications. Contact Tyco Electronics Identification for more information.*

Part numbering system

MP-080080-10-8A



Ordering information



Product dimensions

| Product order code | Package quantity | Labels across | Label width (A) | | Label height (B) | | Horizontal repeat (C) | | Vertical repeat (D) | | Web width (E) | |
|--------------------|------------------|---------------|-----------------|---------------|------------------|---------------|-----------------------|---------------|---------------------|---------------|---------------|---------------|
| | | | mm | <i>inches</i> | mm | <i>inches</i> | mm | <i>inches</i> | mm | <i>inches</i> | mm | <i>inches</i> |
| MP-040040-25-8A | 25,000 | 20 | 4.0 | <i>0.157</i> | 4.0 | <i>0.160</i> | 4.0 | <i>0.157</i> | 7.2 | <i>0.281</i> | 86.0 | <i>3.380</i> |
| MP-064064-25-8A | 25,000 | 12 | 6.4 | <i>0.250</i> | 6.4 | <i>0.250</i> | 6.4 | <i>0.250</i> | 9.5 | <i>0.375</i> | 82.2 | <i>3.240</i> |
| MP-080080-10-8A | 10,000 | 8 | 8.0 | <i>0.315</i> | 8.0 | <i>0.315</i> | 9.9 | <i>0.390</i> | 13.3 | <i>0.525</i> | 83.3 | <i>3.280</i> |
| MP-089047-10-8A | 10,000 | 5 | 8.9 | <i>0.350</i> | 4.7 | <i>0.185</i> | 11.4 | <i>0.450</i> | 7.9 | <i>0.313</i> | 60.6 | <i>2.386</i> |
| MP-095080-25-8A | 25,000 | 5 | 9.5 | <i>0.375</i> | 8.0 | <i>0.315</i> | 12.2 | <i>0.475</i> | 12.7 | <i>0.500</i> | 64.3 | <i>2.531</i> |
| MP-095095-10-8A | 10,000 | 7 | 9.5 | <i>0.375</i> | 9.5 | <i>0.375</i> | 11.1 | <i>0.437</i> | 12.7 | <i>0.500</i> | 82.1 | <i>3.230</i> |

* NOTE: Standard Format Not Compatible with T200 Printers

MP Metalized polyester labels

Product dimensions

| Product order code | Package quantity | Labels across | Label width (A) mm <i>inches</i> | Label height (B) mm <i>inches</i> | Horizontal repeat (C) mm <i>inches</i> | Vertical repeat (D) mm <i>inches</i> | Web width (E) mm <i>inches</i> |
|--------------------|------------------|---------------|-------------------------------------|--------------------------------------|---|---|-----------------------------------|
| MP-127111-10-8A | 10,000 | 5 | 12.7 <i>0.500</i> | 11.1 <i>0.437</i> | 16.8 <i>0.662</i> | 14.3 <i>0.563</i> | 86.0 <i>3.380</i> |
| MP-127127-10-8A | 10,000 | 5 | 12.7 <i>0.500</i> | 12.7 <i>0.500</i> | 15.9 <i>0.625</i> | 15.9 <i>0.625</i> | 82.6 <i>3.250</i> |
| MP-165051-25-8A | 25,000 | 4 | 16.5 <i>0.650</i> | 5.1 <i>0.200</i> | 17.8 <i>0.700</i> | 8.3 <i>0.325</i> | 75.8 <i>2.990</i> |
| MP-165102-10-8A | 10,000 | 5 | 16.5 <i>0.650</i> | 10.2 <i>0.400</i> | 19.1 <i>0.750</i> | 13.8 <i>0.545</i> | 99.1 <i>3.900</i> |
| MP-171171-10-8A | 10,000 | 5 | 17.1 <i>0.674</i> | 17.1 <i>0.674</i> | 19.7 <i>0.774</i> | 20.3 <i>0.800</i> | 101.8 <i>4.006</i> |
| MP-178095-10-8A | 10,000 | 4 | 17.8 <i>0.700</i> | 9.5 <i>0.375</i> | 19.1 <i>0.750</i> | 12.7 <i>0.500</i> | 80.9 <i>3.190</i> |
| MP-191064-10-8A | 10,000 | 4 | 19.1 <i>0.750</i> | 6.4 <i>0.250</i> | 21.6 <i>0.850</i> | 9.5 <i>0.375</i> | 89.9 <i>3.540</i> |
| MP-191114-15-8A | 15,000 | 3 | 19.1 <i>0.750</i> | 11.4 <i>0.450</i> | 22.2 <i>0.875</i> | 14.7 <i>0.579</i> | 69.5 <i>2.736</i> |
| MP-203127-10-8A | 10,000 | 4 | 20.3 <i>0.800</i> | 12.7 <i>0.500</i> | 22.9 <i>0.900</i> | 15.9 <i>0.625</i> | 94.6 <i>3.730</i> |
| MP-229064-10-8A | 10,000 | 3 | 22.9 <i>0.900</i> | 6.4 <i>0.250</i> | 28.6 <i>1.125</i> | 9.5 <i>0.375</i> | 86.0 <i>3.390</i> |
| MP-254045-10-8A | 10,000 | 3 | 25.4 <i>1.000</i> | 4.6 <i>0.180</i> | 31.8 <i>1.250</i> | 8.5 <i>0.333</i> | 95.3 <i>3.750</i> |
| MP-254064-10-8A | 10,000 | 3 | 25.4 <i>1.000</i> | 6.4 <i>0.250</i> | 27.9 <i>1.100</i> | 9.5 <i>0.375</i> | 87.3 <i>3.436</i> |
| MP-254097-10-8A | 10,000 | 3 | 25.4 <i>1.000</i> | 9.7 <i>0.380</i> | 27.9 <i>1.100</i> | 12.7 <i>0.500</i> | 87.4 <i>3.440</i> |
| MP-254127-10-8A | 10,000 | 3 | 25.4 <i>1.000</i> | 12.7 <i>0.500</i> | 27.9 <i>1.100</i> | 16.9 <i>0.666</i> | 87.4 <i>3.440</i> |
| MP-254254-10-8A | 10,000 | 3 | 25.4 <i>1.000</i> | 25.4 <i>1.000</i> | 27.9 <i>1.100</i> | 28.6 <i>1.125</i> | 87.4 <i>3.440</i> |
| MP-305047-10-8A | 10,000 | 2 | 30.5 <i>1.200</i> | 4.7 <i>0.185</i> | 33.0 <i>1.300</i> | 7.8 <i>0.306</i> | 69.5 <i>2.736</i> |
| MP-318064-10-8A | 10,000 | 1 | 31.8 <i>1.250</i> | 6.4 <i>0.250</i> | N/A N/A | 9.5 <i>0.375</i> | 37.9 <i>1.490</i> |
| MP-318097-10-8A | 10,000 | 1 | 31.8 <i>1.250</i> | 9.7 <i>0.380</i> | N/A N/A | 12.7 <i>0.500</i> | 37.8 <i>1.488</i> |
| MP-381064-10-8A | 10,000 | 1 | 38.1 <i>1.500</i> | 6.4 <i>0.250</i> | N/A N/A | 9.5 <i>0.375</i> | 44.5 <i>1.750</i> |
| MP-381127-5-8A | 5,000 | 2 | 38.1 <i>1.500</i> | 12.7 <i>0.500</i> | 44.2 <i>1.738</i> | 15.9 <i>0.625</i> | 88.2 <i>3.472</i> |
| MP-381191-5-8A | 5,000 | 2 | 38.1 <i>1.500</i> | 19.1 <i>0.750</i> | 43.2 <i>1.700</i> | 22.2 <i>0.875</i> | 87.6 <i>3.450</i> |
| MP-381381-2.5-8A | 2,500 | 2 | 38.1 <i>1.500</i> | 38.1 <i>1.500</i> | 44.5 <i>1.750</i> | 40.8 <i>1.607</i> | 88.9 <i>3.500</i> |
| MP-381635-5-8A | 5,000 | 2 | 38.1 <i>1.500</i> | 63.5 <i>2.500</i> | 40.6 <i>1.600</i> | 66.7 <i>2.625</i> | 84.7 <i>3.336</i> |
| MP-406254-1.5-8A | 1,500 | 2 | 40.6 <i>1.600</i> | 25.4 <i>1.000</i> | 55.9 <i>2.200</i> | 38.1 <i>1.500</i> | 102.9 <i>4.050</i> |
| MP-445064-10-8A | 10,000 | 1 | 44.5 <i>1.750</i> | 6.4 <i>0.250</i> | N/A N/A | 9.5 <i>0.375</i> | 50.4 <i>1.986</i> |
| MP-445102-5-8A | 5,000 | 1 | 44.5 <i>1.750</i> | 10.2 <i>0.400</i> | N/A N/A | 12.7 <i>0.500</i> | 50.4 <i>1.986</i> |
| MP-445445-2-8A | 2,000 | 1 | 44.5 <i>1.750</i> | 44.5 <i>1.750</i> | N/A N/A | 47.6 <i>1.875</i> | 50.4 <i>1.986</i> |
| MP-478175-5-8A | 5,000 | 1 | 47.8 <i>1.875</i> | 17.5 <i>0.690</i> | N/A N/A | 24.4 <i>0.962</i> | 66.0 <i>2.600</i> |
| MP-508064-10-8A | 10,000 | 1 | 50.8 <i>2.000</i> | 6.4 <i>0.250</i> | N/A N/A | 9.5 <i>0.375</i> | 56.9 <i>2.240</i> |
| MP-508095-5-8A | 5,000 | 1 | 50.8 <i>2.000</i> | 9.5 <i>0.375</i> | N/A N/A | 12.7 <i>0.500</i> | 57.2 <i>2.250</i> |
| MP-508127-5-8A | 5,000 | 1 | 50.8 <i>2.000</i> | 12.7 <i>0.500</i> | N/A N/A | 15.9 <i>0.625</i> | 56.9 <i>2.240</i> |
| MP-508254-5-8A | 5,000 | 1 | 50.8 <i>2.000</i> | 25.4 <i>1.000</i> | N/A N/A | 28.6 <i>1.125</i> | 57.2 <i>2.250</i> |
| MP-508318-2.5-8A | 2,500 | 1 | 50.8 <i>2.000</i> | 31.8 <i>1.250</i> | N/A N/A | 34.9 <i>1.375</i> | 56.9 <i>2.240</i> |
| MP-508508-3-8A | 3,000 | 1 | 50.8 <i>2.000</i> | 50.8 <i>2.000</i> | N/A N/A | 54.6 <i>2.150</i> | 54.0 <i>2.130</i> |
| MP-523841-1.5-8A | 1,500 | 1 | 52.3 <i>2.060</i> | 84.1 <i>3.310</i> | N/A N/A | 88.9 <i>3.500</i> | 58.2 <i>2.290</i> |
| MP-610419-2.5-8A | 2,500 | 1 | 61.0 <i>2.400</i> | 41.9 <i>1.650</i> | N/A N/A | 45.5 <i>1.792</i> | 67.3 <i>2.650</i> |
| MP-699191-5-8A | 5,000 | 1 | 69.9 <i>2.750</i> | 19.1 <i>0.750</i> | N/A N/A | 23.3 <i>0.917</i> | 76.2 <i>3.000</i> |
| MP-699254-5-8A | 5,000 | 1 | 69.9 <i>2.750</i> | 25.4 <i>1.000</i> | N/A N/A | 28.6 <i>1.125</i> | 76.2 <i>3.000</i> |
| MP-762381-2.5-8A | 2,500 | 1 | 76.2 <i>3.000</i> | 38.1 <i>1.500</i> | N/A N/A | 41.3 <i>1.625</i> | 82.3 <i>3.240</i> |
| MP-762508-2.5-8A | 2,500 | 1 | 76.2 <i>3.000</i> | 50.8 <i>2.000</i> | N/A N/A | 54.0 <i>2.125</i> | 82.6 <i>3.240</i> |
| MP-762127-1-8A | 1,000 | 1 | 76.2 <i>3.000</i> | 127.0 <i>5.000</i> | N/A N/A | 129.5 <i>5.100</i> | 79.4 <i>3.130</i> |
| MP-101508-2.5-8A | 2,500 | 1 | 101.6 <i>4.000</i> | 50.8 <i>2.000</i> | N/A N/A | 54.6 <i>2.150</i> | 104.1 <i>4.100</i> |
| MP-101635-2.5-8A | 2,500 | 1 | 101.6 <i>4.000</i> | 63.5 <i>2.500</i> | N/A N/A | 66.7 <i>2.625</i> | 107.7 <i>4.240</i> |
| MP-101762-1.8-8A | 1,800 | 1 | 101.6 <i>4.000</i> | 76.2 <i>3.000</i> | N/A N/A | 79.4 <i>3.125</i> | 104.1 <i>4.100</i> |
| MP-101101-1.3-8A | 1,300 | 1 | 101.6 <i>4.000</i> | 101.6 <i>4.000</i> | N/A N/A | 104.8 <i>4.125</i> | 104.1 <i>4.100</i> |
| MP-101165-0.85-8A | 850 | 1 | 101.6 <i>4.000</i> | 165.1 <i>6.500</i> | N/A N/A | 168.3 <i>6.680</i> | 104.9 <i>4.130</i> |

* NOTE: Standard Format Not Compatible with T200 Printers

HMM High Tack Matte Metalized Polyester Labels

HMM is a high performance thermal transfer printable matte metalized polyester with an aggressive high tack permanent acrylic adhesive. Designed for applications such as rating plates and serial plates that require high adhesion to textured surfaces, metals low surface energy plastics and powder coated surfaces. The matte surface provides excellent mark permanence and the high tack adhesion of HMM will bond to the most demanding surfaces. For reliable print performance and durability, use with Tyco Electronics 1330-0607 series ribbon.

Features and benefits

- Thermal transfer printable
- Ideal for rating plate applications
- Ultra aggressive adhesive for application to textured and powder coated surfaces
- UL Listed



Specifications/Approvals

| | |
|----------------------------|------------------------------------|
| Tyco Electronics | TTDS-118 |
| Industry | UL MH17292 Group PGJ12 |
| Adhesive | Permanent acrylic - High Tack |
| Service temperature | -40°C to +150°F -40°F to +302°F |
| Recommended printer | T300 Series printers |
| Recommended ribbon | 1330-0607-10* |

*Alternative printers and ribbons are available for special applications. Contact Tyco Electronics Identification for more information.

Part numbering system

HMM-508254-5-8A



Ordering information



Product dimensions

| Product order code | Package quantity | Labels across | Label width (A) | | Label height (B) | | Horizontal repeat (C) | | Vertical repeat (D) | | Web width (E) | |
|--------------------|------------------|---------------|-----------------|---------------|------------------|---------------|-----------------------|---------------|---------------------|---------------|---------------|---------------|
| | | | mm | <i>inches</i> | mm | <i>inches</i> | mm | <i>inches</i> | mm | <i>inches</i> | mm | <i>inches</i> |
| HMM-095095-10-8A | 10,000 | 7 | 9.5 | <i>0.375</i> | 9.5 | <i>0.375</i> | 11.1 | <i>0.437</i> | 12.7 | <i>0.500</i> | 82.1 | <i>3.230</i> |
| HMM-127127-10-8A | 10,000 | 5 | 12.7 | <i>0.500</i> | 12.7 | <i>0.500</i> | 15.9 | <i>0.625</i> | 15.9 | <i>0.625</i> | 82.6 | <i>3.250</i> |
| HMM-165051-25-8A | 25,000 | 4 | 16.5 | <i>0.650</i> | 5.1 | <i>0.200</i> | 17.8 | <i>0.700</i> | 8.3 | <i>0.325</i> | 75.8 | <i>2.990</i> |
| HMM-191064-10-8A | 10,000 | 4 | 19.1 | <i>0.750</i> | 6.4 | <i>0.250</i> | 21.6 | <i>0.850</i> | 9.5 | <i>0.375</i> | 89.9 | <i>3.540</i> |
| HMM-229064-10-8A | 10,000 | 3 | 22.9 | <i>0.900</i> | 6.4 | <i>0.250</i> | 28.6 | <i>1.125</i> | 9.5 | <i>0.375</i> | 86.0 | <i>3.390</i> |
| HMM-254097-10-8A | 10,000 | 3 | 25.4 | <i>1.000</i> | 9.7 | <i>0.380</i> | 27.9 | <i>1.100</i> | 12.7 | <i>0.500</i> | 87.4 | <i>3.440</i> |

* NOTE: Standard Format Not Compatible with T200 Printers

HMM High Tack Matte Metalized Polyester Labels

Product dimensions

| Product order code | Package quantity | Labels across | Label width (A) | | Label height (B) | | Horizontal repeat (C) | | Vertical repeat (D) | | Web width (E) | |
|-----------------------|---------------------|------------------|-----------------|---------------|------------------|---------------|-----------------------|---------------|---------------------|---------------|---------------|---------------|
| | | | mm | <i>inches</i> | mm | <i>inches</i> | mm | <i>inches</i> | mm | <i>inches</i> | mm | <i>inches</i> |
| HMM-254127-10-8A | 10,000 | 3 | 25.4 | <i>1.000</i> | 12.7 | <i>0.500</i> | 27.9 | <i>1.100</i> | 16.9 | <i>0.666</i> | 87.4 | <i>3.440</i> |
| HMM-254254-10-8A | 10,000 | 3 | 25.4 | <i>1.000</i> | 25.4 | <i>1.000</i> | 27.9 | <i>1.100</i> | 28.6 | <i>1.125</i> | 87.4 | <i>3.440</i> |
| HMM-318064-10-8A | 10,000 | 1 | 31.8 | <i>1.250</i> | 6.4 | <i>0.250</i> | N/A | <i>N/A</i> | 9.5 | <i>0.375</i> | 37.9 | <i>1.490</i> |
| HMM-381064-10-8A | 10,000 | 1 | 38.1 | <i>1.500</i> | 6.4 | <i>0.250</i> | N/A | <i>N/A</i> | 9.5 | <i>0.375</i> | 44.5 | <i>1.750</i> |
| HMM-381127-5-8A | 5,000 | 2 | 38.1 | <i>1.500</i> | 12.7 | <i>0.500</i> | 44.2 | <i>1.738</i> | 15.9 | <i>0.625</i> | 88.2 | <i>3.472</i> |
| HMM-381191-5-8A | 5,000 | 2 | 38.1 | <i>1.500</i> | 19.1 | <i>0.750</i> | 43.2 | <i>1.700</i> | 22.2 | <i>0.875</i> | 87.6 | <i>3.450</i> |
| HMM-406254-1.5-8A | 1,500 | 2 | 40.6 | <i>1.600</i> | 25.4 | <i>1.000</i> | 55.9 | <i>2.200</i> | 38.1 | <i>0.500</i> | 102.9 | <i>4.050</i> |
| HMM-508064-10-8A | 10,000 | 1 | 50.8 | <i>2.000</i> | 6.4 | <i>0.250</i> | N/A | <i>N/A</i> | 9.5 | <i>0.375</i> | 56.9 | <i>2.240</i> |
| HMM-508095-5-8A | 5,000 | 1 | 50.8 | <i>2.000</i> | 9.5 | <i>0.375</i> | N/A | <i>N/A</i> | 12.7 | <i>0.500</i> | 57.2 | <i>2.250</i> |
| HMM-508127-5-8A | 5,000 | 1 | 50.8 | <i>2.000</i> | 12.7 | <i>0.500</i> | N/A | <i>N/A</i> | 15.9 | <i>0.625</i> | 56.9 | <i>2.240</i> |
| HMM-508254-5-8A | 5,000 | 1 | 50.8 | <i>2.000</i> | 25.4 | <i>1.000</i> | N/A | <i>N/A</i> | 28.6 | <i>1.125</i> | 57.2 | <i>2.250</i> |
| HMM-508318-2.5-8A | 2,500 | 1 | 50.8 | <i>2.000</i> | 31.8 | <i>1.250</i> | N/A | <i>N/A</i> | 34.9 | <i>1.375</i> | 56.9 | <i>2.240</i> |
| HMM-508508-3-8A | 3,000 | 1 | 50.8 | <i>2.000</i> | 50.8 | <i>2.000</i> | N/A | <i>N/A</i> | 54.6 | <i>2.150</i> | 54.0 | <i>2.130</i> |
| HMM-699254-5-8A | 5,000 | 1 | 69.9 | <i>2.750</i> | 25.4 | <i>1.000</i> | N/A | <i>N/A</i> | 28.6 | <i>1.125</i> | 76.2 | <i>3.000</i> |
| HMM-762254-5-8A | 5,000 | 1 | 76.2 | <i>3.000</i> | 25.4 | <i>1.000</i> | N/A | <i>N/A</i> | 28.6 | <i>1.125</i> | 82.3 | <i>3.240</i> |
| HMM-762381-2.5-8A | 2,500 | 1 | 76.2 | <i>3.000</i> | 38.1 | <i>1.500</i> | N/A | <i>N/A</i> | 41.3 | <i>1.625</i> | 82.3 | <i>3.240</i> |
| HMM-762508-2.5-8A | 2,500 | 1 | 76.2 | <i>3.000</i> | 50.8 | <i>2.000</i> | N/A | <i>N/A</i> | 54.0 | <i>2.125</i> | 82.3 | <i>3.240</i> |
| HMM-101635-2.5-8A | 2,500 | 1 | 101.6 | <i>4.000</i> | 63.5 | <i>2.500</i> | N/A | <i>N/A</i> | 66.7 | <i>2.625</i> | 107.7 | <i>4.240</i> |
| HMM-101101-1.3-8A | 1,300 | 1 | 101.6 | <i>4.000</i> | 101.6 | <i>4.000</i> | N/A | <i>N/A</i> | 104.8 | <i>4.125</i> | 104.1 | <i>4.100</i> |

*NOTE: Standard Format Not Compatible with T200 Printers

MV Tamper-evident metalized polyester labels

Tyco Electronics MV is a thermal transfer printable metalized polyester film with a permanent acrylic adhesive, designed with a tamper-evident feature which leaves a void footprint when removed. It is ideal for applications such as rating plate and serial number labels that require protection against removal. For reliable print performance and durability, use with Tyco Electronics 1330-0607 ribbon.



Features and benefits

- Thermal transfer printable
- Metalized appearance
- Ideal for security applications
- UL Recognized



Specifications/Approvals

Tyco Electronics TTDS-084
 Industry UL MH17292 Group PGJ12

Adhesive Permanent acrylic

Service temperature -40°C to +150°C -40°F to +302°F

Recommended printer T300 Series printers

Recommended ribbon 1330-0607-10*

*Alternative printers and ribbons are available for special applications. Contact Tyco Electronics Identification for more information.

Part numbering system

MV-080080-10-8A



Ordering information



Product dimensions

| Product order code | Package quantity | Labels across | Label width (A) | | Label height (B) | | Horizontal repeat (C) | | Vertical repeat (D) | | Web width (E) | |
|--------------------|------------------|---------------|-----------------|--------------|------------------|--------------|-----------------------|--------------|---------------------|--------------|---------------|--------------|
| | | | mm | inches | mm | inches | mm | inches | mm | inches | mm | inches |
| MV-040040-25-8A | 25,000 | 20 | 4.0 | <i>0.157</i> | 4.0 | <i>0.157</i> | 4.0 | <i>0.157</i> | 7.2 | <i>0.281</i> | 86.0 | <i>3.380</i> |
| MV-064064-25-8A | 25,000 | 12 | 6.4 | <i>0.250</i> | 6.4 | <i>0.250</i> | 6.4 | <i>0.250</i> | 9.5 | <i>0.375</i> | 82.2 | <i>3.240</i> |
| * MV-080080-10-8A | 10,000 | 8 | 8.0 | <i>0.315</i> | 8.0 | <i>0.315</i> | 9.9 | <i>0.390</i> | 13.3 | <i>0.525</i> | 83.3 | <i>3.280</i> |
| MV-089047-10-8A | 10,000 | 5 | 8.9 | <i>0.350</i> | 4.7 | <i>0.185</i> | 11.4 | <i>0.450</i> | 7.9 | <i>0.313</i> | 60.6 | <i>2.386</i> |
| MV-095080-25-8A | 25,000 | 5 | 9.5 | <i>0.375</i> | 8.0 | <i>0.315</i> | 12.2 | <i>0.480</i> | 12.7 | <i>0.500</i> | 64.3 | <i>2.531</i> |
| MV-095095-10-8A | 10,000 | 7 | 9.5 | <i>0.375</i> | 9.5 | <i>0.375</i> | 11.1 | <i>0.437</i> | 12.7 | <i>0.500</i> | 82.1 | <i>3.230</i> |

***NOTE: Standard Format Not Compatible with T200 Printers**

MV Tamper-evident metalized polyester labels

Product dimensions

| Product order code | Package quantity | Labels across | Label width (A) | | Label height (B) | | Horizontal repeat (C) | | Vertical repeat (D) | | Web width (E) | |
|--------------------|------------------|---------------|-----------------|---------------|------------------|---------------|-----------------------|---------------|---------------------|---------------|---------------|---------------|
| | | | mm | <i>inches</i> | mm | <i>inches</i> | mm | <i>inches</i> | mm | <i>inches</i> | mm | <i>inches</i> |
| MV-127111-10-8A | 10,000 | 5 | 12.7 | <i>0.500</i> | 11.1 | <i>0.437</i> | 16.8 | <i>0.662</i> | 14.3 | <i>0.563</i> | 86.0 | <i>3.380</i> |
| MV-127127-10-8A | 10,000 | 5 | 12.7 | <i>0.500</i> | 12.7 | <i>0.500</i> | 15.9 | <i>0.625</i> | 15.9 | <i>0.625</i> | 82.6 | <i>3.250</i> |
| MV-165051-25-8A | 25,000 | 4 | 16.5 | <i>0.650</i> | 5.1 | <i>0.200</i> | 17.8 | <i>0.700</i> | 8.3 | <i>0.325</i> | 75.8 | <i>2.990</i> |
| MV-165102-10-8A | 10,000 | 5 | 16.5 | <i>0.650</i> | 10.2 | <i>0.400</i> | 19.1 | <i>0.750</i> | 13.8 | <i>0.545</i> | 99.1 | <i>3.900</i> |
| MV-171171-10-8A | 10,000 | 5 | 17.1 | <i>0.674</i> | 17.1 | <i>0.674</i> | 19.7 | <i>0.774</i> | 20.3 | <i>0.800</i> | 101.8 | <i>4.006</i> |
| MV-178095-10-8A | 10,000 | 4 | 17.8 | <i>0.700</i> | 9.5 | <i>0.375</i> | 19.1 | <i>0.750</i> | 12.7 | <i>0.500</i> | 80.9 | <i>3.190</i> |
| MV-191064-10-8A | 10,000 | 4 | 19.1 | <i>0.750</i> | 6.4 | <i>0.250</i> | 21.6 | <i>0.850</i> | 9.5 | <i>0.375</i> | 89.9 | <i>3.540</i> |
| MV-191114-15-8A | 15,000 | 3 | 19.1 | <i>0.750</i> | 11.4 | <i>0.450</i> | 22.2 | <i>0.875</i> | 14.7 | <i>0.579</i> | 69.5 | <i>2.736</i> |
| MV-203127-10-8A | 10,000 | 4 | 20.3 | <i>0.800</i> | 12.7 | <i>0.500</i> | 22.9 | <i>0.900</i> | 15.9 | <i>0.625</i> | 94.6 | <i>3.730</i> |
| MV-229064-10-8A | 10,000 | 3 | 22.9 | <i>0.900</i> | 6.4 | <i>0.250</i> | 28.6 | <i>1.125</i> | 9.5 | <i>0.375</i> | 86.0 | <i>3.390</i> |
| MV-254045-10-8A | 10,000 | 3 | 25.4 | <i>1.000</i> | 4.6 | <i>0.180</i> | 31.8 | <i>1.250</i> | 8.5 | <i>0.333</i> | 95.3 | <i>3.750</i> |
| MV-254064-10-8A | 10,000 | 3 | 25.4 | <i>1.000</i> | 6.4 | <i>0.250</i> | 27.9 | <i>1.100</i> | 9.5 | <i>0.375</i> | 87.3 | <i>3.436</i> |
| MV-254097-10-8A | 10,000 | 3 | 25.4 | <i>1.000</i> | 9.7 | <i>0.380</i> | 27.9 | <i>1.100</i> | 12.7 | <i>0.500</i> | 87.4 | <i>3.440</i> |
| MV-254127-10-8A | 10,000 | 3 | 25.4 | <i>1.000</i> | 12.7 | <i>0.500</i> | 27.9 | <i>1.100</i> | 16.9 | <i>0.666</i> | 87.4 | <i>3.440</i> |
| MV-254254-10-8A | 10,000 | 3 | 25.4 | <i>1.000</i> | 25.4 | <i>1.000</i> | 27.9 | <i>1.100</i> | 28.6 | <i>1.125</i> | 87.4 | <i>3.440</i> |
| MV-305047-10-8A | 10,000 | 2 | 30.5 | <i>1.200</i> | 4.7 | <i>0.185</i> | 33.0 | <i>1.300</i> | 7.8 | <i>0.306</i> | 69.5 | <i>2.736</i> |
| MV-318064-10-8A | 10,000 | 1 | 31.8 | <i>1.250</i> | 6.4 | <i>0.250</i> | N/A | N/A | 9.5 | <i>0.375</i> | 37.9 | <i>1.490</i> |
| MV-318097-10-8A | 10,000 | 1 | 31.8 | <i>1.250</i> | 9.7 | <i>0.380</i> | N/A | N/A | 12.7 | <i>0.500</i> | 37.8 | <i>1.486</i> |
| MV-381064-10-8A | 10,000 | 1 | 38.1 | <i>1.500</i> | 6.4 | <i>0.250</i> | N/A | N/A | 9.5 | <i>0.375</i> | 44.5 | <i>1.750</i> |
| MV-381127-5-8A | 5,000 | 2 | 38.1 | <i>1.500</i> | 12.7 | <i>0.500</i> | 44.2 | <i>1.738</i> | 15.9 | <i>0.625</i> | 88.2 | <i>3.472</i> |
| MV-381191-5-8A | 5,000 | 2 | 38.1 | <i>1.500</i> | 19.1 | <i>0.750</i> | 43.2 | <i>1.700</i> | 22.2 | <i>0.875</i> | 87.6 | <i>3.450</i> |
| MV-381381-2.5-8A | 2,500 | 2 | 38.1 | <i>1.500</i> | 38.1 | <i>1.500</i> | 44.5 | <i>1.750</i> | 40.8 | <i>1.607</i> | 88.9 | <i>3.500</i> |
| MV-381635-5-8A | 5,000 | 2 | 38.1 | <i>1.500</i> | 63.5 | <i>2.500</i> | 40.6 | <i>1.600</i> | 66.7 | <i>2.625</i> | 84.7 | <i>3.336</i> |
| MV-406254-1.5-8A | 1,500 | 2 | 40.6 | <i>1.600</i> | 25.4 | <i>1.000</i> | 55.9 | <i>2.200</i> | 38.1 | <i>1.500</i> | 102.9 | <i>4.050</i> |
| MV-445064-10-8A | 10,000 | 1 | 44.5 | <i>1.750</i> | 6.4 | <i>0.250</i> | N/A | N/A | 9.5 | <i>0.375</i> | 50.4 | <i>1.986</i> |
| MV-445102-5-8A | 5,000 | 1 | 44.5 | <i>1.750</i> | 10.2 | <i>0.400</i> | N/A | N/A | 12.7 | <i>0.500</i> | 50.4 | <i>1.986</i> |
| MV-445445-2-8A | 2,000 | 1 | 44.5 | <i>1.750</i> | 44.5 | <i>1.750</i> | N/A | N/A | 47.6 | <i>1.875</i> | 50.4 | <i>1.986</i> |
| MV-478175-5-8A | 5,000 | 1 | 47.8 | <i>1.880</i> | 17.5 | <i>0.690</i> | N/A | N/A | 24.4 | <i>0.962</i> | 66.0 | <i>2.600</i> |
| MV-508064-10-8A | 10,000 | 1 | 50.8 | <i>2.000</i> | 6.4 | <i>0.250</i> | N/A | N/A | 9.5 | <i>0.375</i> | 56.9 | <i>2.240</i> |
| MV-508095-5-8A | 5,000 | 1 | 50.8 | <i>2.000</i> | 9.5 | <i>0.375</i> | N/A | N/A | 12.7 | <i>0.500</i> | 57.2 | <i>2.250</i> |
| MV-508127-5-8A | 5,000 | 1 | 50.8 | <i>2.000</i> | 12.7 | <i>0.500</i> | N/A | N/A | 15.9 | <i>0.625</i> | 56.9 | <i>2.240</i> |
| MV-508254-5-8A | 5,000 | 1 | 50.8 | <i>2.000</i> | 25.4 | <i>1.000</i> | N/A | N/A | 28.6 | <i>1.125</i> | 57.2 | <i>2.250</i> |
| MV-508318-2.5-8A | 2,500 | 1 | 50.8 | <i>2.000</i> | 31.8 | <i>1.250</i> | N/A | N/A | 34.9 | <i>1.375</i> | 56.9 | <i>2.240</i> |
| MV-508508-3-8A | 3,000 | 1 | 50.8 | <i>2.000</i> | 50.8 | <i>2.000</i> | N/A | N/A | 54.6 | <i>2.150</i> | 54.0 | <i>2.130</i> |
| MV-523841-1.5-8A | 1,500 | 1 | 52.3 | <i>2.060</i> | 84.1 | <i>3.310</i> | N/A | N/A | 88.9 | <i>3.500</i> | 58.2 | <i>2.290</i> |
| MV-610419-2.5-8A | 2,500 | 1 | 61.0 | <i>2.400</i> | 41.9 | <i>1.650</i> | N/A | N/A | 45.5 | <i>1.792</i> | 67.3 | <i>2.650</i> |
| MV-699191-5-8A | 5,000 | 1 | 69.9 | <i>2.750</i> | 19.1 | <i>0.750</i> | N/A | N/A | 23.3 | <i>0.917</i> | 76.2 | <i>3.000</i> |
| MV-699254-5-8A | 5,000 | 1 | 69.9 | <i>2.750</i> | 25.4 | <i>1.000</i> | N/A | N/A | 28.6 | <i>1.125</i> | 76.2 | <i>3.000</i> |
| MV-762381-2.5-8A | 2,500 | 1 | 76.2 | <i>3.000</i> | 38.1 | <i>1.500</i> | N/A | N/A | 41.3 | <i>1.625</i> | 82.3 | <i>3.240</i> |
| MV-762508-2.5-8A | 2,500 | 1 | 76.2 | <i>3.000</i> | 50.8 | <i>2.000</i> | N/A | N/A | 54.0 | <i>2.125</i> | 82.6 | <i>3.240</i> |
| MV-762127-1-8A | 1,000 | 1 | 76.2 | <i>3.000</i> | 127.0 | <i>5.000</i> | N/A | N/A | 129.5 | <i>5.100</i> | 79.4 | <i>3.130</i> |
| MV-101508-2.5-8A | 2,500 | 1 | 101.6 | <i>4.000</i> | 50.8 | <i>2.000</i> | N/A | N/A | 54.6 | <i>2.150</i> | 104.1 | <i>4.100</i> |
| MV-101635-2.5-8A | 2,500 | 1 | 101.6 | <i>4.000</i> | 63.5 | <i>2.500</i> | N/A | N/A | 66.7 | <i>2.625</i> | 107.7 | <i>4.240</i> |
| MV-101762-1.8-8A | 1,800 | 1 | 101.6 | <i>4.000</i> | 76.2 | <i>3.000</i> | N/A | N/A | 79.4 | <i>3.125</i> | 104.1 | <i>4.100</i> |
| MV-101101-1.3-8A | 1,300 | 1 | 101.6 | <i>4.000</i> | 101.6 | <i>4.000</i> | N/A | N/A | 104.8 | <i>4.125</i> | 104.1 | <i>4.100</i> |
| MV-101165-0.85-8A | 850 | 1 | 101.6 | <i>4.000</i> | 165.1 | <i>6.500</i> | N/A | N/A | 168.3 | <i>6.680</i> | 104.9 | <i>4.130</i> |

* NOTE: Standard Format Not Compatible with T200 Printers

TN Tamper proof destructible polyethylene labels

Tyco Electronics TN is a thermal transfer printable, tamper proof destructible polyethylene label with a permanent acrylic adhesive, designed to fracture upon removal after 72 hours. It is ideal for serial number labels and calibration information labeling, or other applications that require a tamper proof label. For reliable print performance and durability, use with Tyco Electronics 1330-0607 ribbon.



Features and benefits

- Thermal transfer printable
- Ideal for security applications
- Several die-cut sizes available

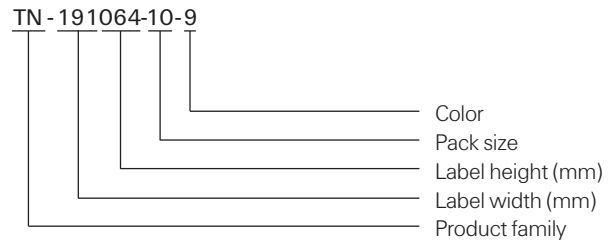


Specifications/Approvals

| | | | |
|----------------------------|------------------------|-----------------|--|
| Industry | UL MH17292 Group PGJ12 | | |
| Adhesive | Permanent rubber-based | | |
| Service temperature | -40°C to +80°C | -40°F to +176°F | |
| Recommended printer | T300 Series printers | | |
| Recommended ribbon | 1330-0607-10* | | |

**Alternative printers and ribbons are available for special applications. Contact Tyco Electronics Identification for more information.*

Part numbering system



Ordering information



Product dimensions

| Product order code | Package quantity | Labels across | Label width (A) | | Label height (B) | | Horizontal repeat (C) | | Vertical repeat (D) | | Web width (E) | |
|--------------------|------------------|---------------|-----------------|---------------|------------------|---------------|-----------------------|---------------|---------------------|---------------|---------------|---------------|
| | | | mm | <i>inches</i> | mm | <i>inches</i> | mm | <i>inches</i> | mm | <i>inches</i> | mm | <i>inches</i> |
| TN-040040-25-9 | 25,000 | 20 | 4.0 | <i>0.157</i> | 4.0 | <i>0.157</i> | 4.0 | <i>0.157</i> | 7.2 | <i>0.281</i> | 86.0 | <i>3.380</i> |
| TN-064064-25-9 | 25,000 | 12 | 6.4 | <i>0.250</i> | 6.4 | <i>0.250</i> | 6.4 | <i>0.250</i> | 9.5 | <i>0.375</i> | 82.2 | <i>3.240</i> |
| *TN-080080-10-9 | 10,000 | 8 | 8.0 | <i>0.315</i> | 8.0 | <i>0.315</i> | 9.9 | <i>0.390</i> | 13.3 | <i>0.525</i> | 83.3 | <i>3.280</i> |
| TN-089047-10-9 | 10,000 | 5 | 8.9 | <i>0.350</i> | 4.7 | <i>0.185</i> | 11.4 | <i>0.450</i> | 7.9 | <i>0.313</i> | 60.6 | <i>2.386</i> |
| TN-095080-25-9 | 25,000 | 5 | 9.5 | <i>0.375</i> | 8.0 | <i>0.315</i> | 12.2 | <i>0.480</i> | 12.7 | <i>0.500</i> | 64.3 | <i>2.531</i> |
| TN-095095-10-9 | 10,000 | 7 | 9.5 | <i>0.375</i> | 9.5 | <i>0.375</i> | 11.1 | <i>0.437</i> | 12.7 | <i>0.500</i> | 82.1 | <i>3.230</i> |

***NOTE: Standard Format Not Compatible with T200 Printers**

TN Tamper proof destructible polyethylene labels

Product dimensions

| Product order code | Package quantity | Labels across | Label width (A) mm <i>inches</i> | Label height (B) mm <i>inches</i> | Horizontal repeat (C) mm <i>inches</i> | Vertical repeat (D) mm <i>inches</i> | Web width (E) mm <i>inches</i> |
|--------------------|------------------|---------------|-------------------------------------|--------------------------------------|---|---|-----------------------------------|
| TN-127111-10-9 | 10,000 | 5 | 12.7 <i>0.500</i> | 11.1 <i>0.437</i> | 16.8 <i>0.662</i> | 14.3 <i>0.563</i> | 86.0 <i>3.380</i> |
| TN-127127-10-9 | 10,000 | 5 | 12.7 <i>0.500</i> | 12.7 <i>0.500</i> | 15.9 <i>0.625</i> | 15.9 <i>0.625</i> | 82.6 <i>3.250</i> |
| TN-165051-25-9 | 25,000 | 4 | 16.5 <i>0.650</i> | 5.1 <i>0.200</i> | 17.8 <i>0.700</i> | 8.3 <i>0.325</i> | 75.8 <i>2.990</i> |
| TN-165102-10-9 | 10,000 | 5 | 16.5 <i>0.650</i> | 10.2 <i>0.400</i> | 19.1 <i>0.750</i> | 13.8 <i>0.545</i> | 99.1 <i>3.900</i> |
| TN-171171-10-9 | 10,000 | 5 | 17.1 <i>0.674</i> | 17.1 <i>0.674</i> | 19.7 <i>0.774</i> | 20.3 <i>0.800</i> | 101.8 <i>4.006</i> |
| TN-178095-10-9 | 10,000 | 4 | 17.8 <i>0.700</i> | 9.5 <i>0.375</i> | 19.1 <i>0.750</i> | 12.7 <i>0.500</i> | 80.9 <i>3.190</i> |
| TN-191064-10-9 | 10,000 | 4 | 19.1 <i>0.750</i> | 6.4 <i>0.250</i> | 21.6 <i>0.850</i> | 9.5 <i>0.375</i> | 89.9 <i>3.540</i> |
| TN-191114-15-9 | 15,000 | 3 | 19.1 <i>0.750</i> | 11.4 <i>0.450</i> | 22.2 <i>0.875</i> | 14.7 <i>0.579</i> | 69.5 <i>2.736</i> |
| TN-203127-10-9 | 10,000 | 4 | 20.3 <i>0.800</i> | 12.7 <i>0.500</i> | 22.9 <i>0.900</i> | 15.9 <i>0.625</i> | 94.6 <i>3.730</i> |
| TN-229064-10-9 | 10,000 | 3 | 22.9 <i>0.900</i> | 6.4 <i>0.250</i> | 28.6 <i>1.125</i> | 9.5 <i>0.375</i> | 86.0 <i>3.390</i> |
| TN-254045-10-9 | 10,000 | 3 | 25.4 <i>1.000</i> | 4.6 <i>0.180</i> | 31.8 <i>1.250</i> | 8.5 <i>0.333</i> | 95.3 <i>3.750</i> |
| TN-254064-10-9 | 10,000 | 3 | 25.4 <i>1.000</i> | 6.4 <i>0.250</i> | 27.9 <i>1.100</i> | 9.5 <i>0.375</i> | 87.3 <i>3.436</i> |
| TN-254097-10-9 | 10,000 | 3 | 25.4 <i>1.000</i> | 9.7 <i>0.380</i> | 27.9 <i>1.100</i> | 12.7 <i>0.500</i> | 87.4 <i>3.440</i> |
| TN-254127-10-9 | 10,000 | 3 | 25.4 <i>1.000</i> | 12.7 <i>0.500</i> | 27.9 <i>1.100</i> | 16.9 <i>0.666</i> | 87.4 <i>3.440</i> |
| TN-254254-10-9 | 10,000 | 3 | 25.4 <i>1.000</i> | 25.4 <i>1.000</i> | 27.9 <i>1.100</i> | 28.6 <i>1.125</i> | 87.4 <i>3.440</i> |
| TN-305047-10-9 | 10,000 | 2 | 30.5 <i>1.200</i> | 4.7 <i>0.185</i> | 33.0 <i>1.300</i> | 7.8 <i>0.306</i> | 69.5 <i>2.736</i> |
| TN-318064-10-9 | 10,000 | 1 | 31.8 <i>1.250</i> | 6.4 <i>0.250</i> | N/A N/A | 9.5 <i>0.375</i> | 37.9 <i>1.490</i> |
| TN-318097-10-9 | 10,000 | 1 | 31.8 <i>1.250</i> | 9.7 <i>0.380</i> | N/A N/A | 12.7 <i>0.500</i> | 37.8 <i>1.488</i> |
| TN-381064-10-9 | 10,000 | 1 | 38.1 <i>1.500</i> | 6.4 <i>0.250</i> | N/A N/A | 9.5 <i>0.375</i> | 44.5 <i>1.750</i> |
| TN-381127-5-9 | 5,000 | 2 | 38.1 <i>1.500</i> | 12.7 <i>0.500</i> | 44.2 <i>1.738</i> | 15.9 <i>0.625</i> | 88.2 <i>3.472</i> |
| TN-381191-5-9 | 5,000 | 2 | 38.1 <i>1.500</i> | 19.1 <i>0.750</i> | 43.2 <i>1.700</i> | 22.2 <i>0.875</i> | 87.6 <i>3.450</i> |
| TN-381381-2.5-9 | 2,500 | 2 | 38.1 <i>1.500</i> | 38.1 <i>1.500</i> | 44.5 <i>1.750</i> | 40.8 <i>1.607</i> | 88.9 <i>3.500</i> |
| TN-381635-5-9 | 5,000 | 2 | 38.1 <i>1.500</i> | 63.5 <i>2.500</i> | 40.6 <i>1.600</i> | 66.7 <i>2.625</i> | 84.7 <i>3.336</i> |
| TN-406254-1.5-9 | 1,500 | 2 | 40.6 <i>1.600</i> | 25.4 <i>1.000</i> | 55.9 <i>2.200</i> | 38.1 <i>1.500</i> | 102.9 <i>4.050</i> |
| TN-445064-10-9 | 10,000 | 1 | 44.5 <i>1.750</i> | 6.4 <i>0.250</i> | N/A N/A | 9.5 <i>0.375</i> | 50.4 <i>1.986</i> |
| TN-445102-5-9 | 5,000 | 1 | 44.5 <i>1.750</i> | 10.2 <i>0.400</i> | N/A N/A | 12.7 <i>0.500</i> | 50.4 <i>1.986</i> |
| TN-445445-2-9 | 2,000 | 1 | 44.5 <i>1.750</i> | 44.5 <i>1.750</i> | N/A N/A | 47.6 <i>1.875</i> | 50.4 <i>1.986</i> |
| TN-478175-5-9 | 5,000 | 1 | 47.8 <i>1.880</i> | 17.5 <i>0.690</i> | N/A N/A | 24.4 <i>0.962</i> | 66.0 <i>2.600</i> |
| TN-508064-10-9 | 10,000 | 1 | 50.8 <i>2.000</i> | 6.4 <i>0.250</i> | N/A N/A | 9.5 <i>0.375</i> | 56.9 <i>2.240</i> |
| TN-508095-5-9 | 5,000 | 1 | 50.8 <i>2.000</i> | 9.5 <i>0.375</i> | N/A N/A | 12.7 <i>0.500</i> | 57.2 <i>2.250</i> |
| TN-508127-5-9 | 5,000 | 1 | 50.8 <i>2.000</i> | 12.7 <i>0.500</i> | N/A N/A | 15.9 <i>0.625</i> | 56.9 <i>2.240</i> |
| TN-508254-5-9 | 5,000 | 1 | 50.8 <i>2.000</i> | 25.4 <i>1.000</i> | N/A N/A | 28.6 <i>1.125</i> | 57.2 <i>2.250</i> |
| TN-508318-2.5-9 | 2,500 | 1 | 50.8 <i>2.000</i> | 31.8 <i>1.250</i> | N/A N/A | 34.9 <i>1.375</i> | 56.9 <i>2.240</i> |
| TN-508508-3-9 | 3,000 | 1 | 50.8 <i>2.000</i> | 50.8 <i>2.000</i> | N/A N/A | 54.6 <i>2.150</i> | 54.0 <i>2.130</i> |
| TN-523841-1.5-9 | 1,500 | 1 | 52.3 <i>2.060</i> | 84.1 <i>3.310</i> | N/A N/A | 88.9 <i>3.500</i> | 58.2 <i>2.290</i> |
| TN-610419-2.5-9 | 2,500 | 1 | 61.0 <i>2.400</i> | 41.9 <i>1.650</i> | N/A N/A | 45.5 <i>1.792</i> | 67.3 <i>2.650</i> |
| TN-699191-5-9 | 5,000 | 1 | 69.9 <i>2.750</i> | 19.1 <i>0.750</i> | N/A N/A | 23.3 <i>0.917</i> | 76.2 <i>3.000</i> |
| TN-699254-5-9 | 5,000 | 1 | 69.9 <i>2.750</i> | 25.4 <i>1.000</i> | N/A N/A | 28.6 <i>1.125</i> | 76.2 <i>3.000</i> |
| TN-762381-2.5-9 | 2,500 | 1 | 76.2 <i>3.000</i> | 38.1 <i>1.500</i> | N/A N/A | 41.3 <i>1.625</i> | 82.3 <i>3.240</i> |
| TN-762508-2.5-9 | 2,500 | 1 | 76.2 <i>3.000</i> | 50.8 <i>2.000</i> | N/A N/A | 54.0 <i>2.125</i> | 82.6 <i>3.240</i> |
| TN-762127-1-9 | 1,000 | 1 | 76.2 <i>3.000</i> | 127.0 <i>5.000</i> | N/A N/A | 129.5 <i>5.100</i> | 79.4 <i>3.130</i> |
| TN-101508-2.5-9 | 2,500 | 1 | 101.6 <i>4.000</i> | 50.8 <i>2.000</i> | N/A N/A | 54.6 <i>2.150</i> | 104.1 <i>4.100</i> |
| TN-101635-2.5-9 | 2,500 | 1 | 101.6 <i>4.000</i> | 63.5 <i>2.500</i> | N/A N/A | 66.7 <i>2.625</i> | 107.7 <i>4.240</i> |
| TN-101762-1.8-9 | 1,800 | 1 | 101.6 <i>4.000</i> | 76.2 <i>3.000</i> | N/A N/A | 79.4 <i>3.125</i> | 104.1 <i>4.100</i> |
| TN-101101-1.3-9 | 1,300 | 1 | 101.6 <i>4.000</i> | 101.6 <i>4.000</i> | N/A N/A | 104.8 <i>4.125</i> | 104.1 <i>4.100</i> |
| TN-101165-0.85-9 | 850 | 1 | 101.6 <i>4.000</i> | 165.1 <i>6.500</i> | N/A N/A | 168.3 <i>6.680</i> | 104.9 <i>4.130</i> |

* NOTE: Standard Format Not Compatible with T200 Printers

WV White vinyl labels

Tyco Electronics WV is a thermal transfer printable, flexible white vinyl film with a permanent acrylic adhesive. It offers excellent conformability to round, irregular or flexible surfaces, and is ideal for wire and cable identification, including flat ribbon cables that are subject to repeated bending. WV is resistant to oil, mild solvents, water and outdoor exposure. For reliable print performance and durability use with Tyco Electronics 1330-0607 ribbon.

Features and benefits

- Thermal transfer printable
- High tack adhesive bonds to most substrates including painted metal and low surface energy plastics such as polyethylene



| | |
|----------------------------|-------------------------------------|
| Specifications | TTDS-090 |
| Adhesive | Permanent acrylic high initial tack |
| Service temperature | -40°C to +80°C -40°F to +176°F |
| Recommended printer | T300 Series printers |
| Recommended ribbon | 1330-0607-10* |

*Alternative printers and ribbons are available for special applications. Contact Tyco Electronics Identification for more information.

Part numbering system



Ordering information



Product dimensions

| Product order code | Package quantity | Labels across | Label width (A) | | Label height (B) | | Horizontal repeat (C) | | Vertical repeat (D) | | Web width (E) | |
|--------------------|------------------|---------------|-----------------|---------------|------------------|---------------|-----------------------|---------------|---------------------|---------------|---------------|---------------|
| | | | mm | <i>inches</i> | mm | <i>inches</i> | mm | <i>inches</i> | mm | <i>inches</i> | mm | <i>inches</i> |
| WV-040040-25-9 | 25,000 | 20 | 4.0 | <i>0.157</i> | 4.0 | <i>0.157</i> | 4.0 | <i>0.157</i> | 7.2 | <i>0.281</i> | 86.0 | <i>3.380</i> |
| * WV-080080-10-9 | 10,000 | 8 | 8.0 | <i>0.315</i> | 8.0 | <i>0.315</i> | 9.9 | <i>0.390</i> | 13.3 | <i>0.525</i> | 83.3 | <i>3.280</i> |
| WV-089047-10-9 | 10,000 | 5 | 8.9 | <i>0.350</i> | 4.7 | <i>0.185</i> | 11.4 | <i>0.450</i> | 7.9 | <i>0.313</i> | 60.6 | <i>2.386</i> |
| WV-095080-25-9 | 25,000 | 5 | 9.5 | <i>0.375</i> | 8.0 | <i>0.315</i> | 12.2 | <i>0.480</i> | 12.7 | <i>0.500</i> | 64.3 | <i>2.531</i> |
| WV-095095-10-9 | 10,000 | 7 | 9.5 | <i>0.375</i> | 9.5 | <i>0.375</i> | 11.1 | <i>0.437</i> | 12.7 | <i>0.500</i> | 82.1 | <i>3.230</i> |
| WV-127111-10-9 | 10,000 | 5 | 12.7 | <i>0.500</i> | 11.1 | <i>0.437</i> | 16.8 | <i>0.662</i> | 14.3 | <i>0.563</i> | 86.0 | <i>3.380</i> |

* NOTE: Standard Format Not Compatible with T200 Printers

WW White vinyl labels

Product dimensions

| Product order code | Package quantity | Labels across | Label width (A) | | Label height (B) | | Horizontal repeat (C) | | Vertical repeat (D) | | Web width (E) | |
|--------------------|------------------|---------------|-----------------|---------------|------------------|---------------|-----------------------|---------------|---------------------|---------------|---------------|---------------|
| | | | mm | <i>inches</i> | mm | <i>inches</i> | mm | <i>inches</i> | mm | <i>inches</i> | mm | <i>inches</i> |
| WW-127127-10-9 | 10,000 | 5 | 12.7 | <i>0.500</i> | 12.7 | <i>0.500</i> | 15.9 | <i>0.625</i> | 15.9 | <i>0.625</i> | 82.6 | <i>3.250</i> |
| * WW-165051-25-9 | 25,000 | 4 | 16.5 | <i>0.650</i> | 5.1 | <i>0.200</i> | 17.8 | <i>0.700</i> | 8.3 | <i>0.325</i> | 75.8 | <i>2.990</i> |
| WW-165102-10-9 | 10,000 | 5 | 16.5 | <i>0.650</i> | 10.2 | <i>0.400</i> | 19.1 | <i>0.750</i> | 13.8 | <i>0.545</i> | 99.1 | <i>3.900</i> |
| WW-171171-10-9 | 10,000 | 5 | 17.1 | <i>0.674</i> | 17.1 | <i>0.674</i> | 19.7 | <i>0.774</i> | 20.3 | <i>0.800</i> | 101.8 | <i>4.006</i> |
| * WW-178095-10-9 | 10,000 | 4 | 17.8 | <i>0.700</i> | 9.5 | <i>0.375</i> | 19.1 | <i>0.750</i> | 12.7 | <i>0.500</i> | 80.9 | <i>3.190</i> |
| * WW-191064-10-9 | 10,000 | 4 | 19.1 | <i>0.750</i> | 6.4 | <i>0.250</i> | 21.6 | <i>0.850</i> | 9.5 | <i>0.375</i> | 89.9 | <i>3.540</i> |
| WW-191114-15-9 | 15,000 | 3 | 19.1 | <i>0.750</i> | 11.4 | <i>0.450</i> | 22.2 | <i>0.875</i> | 14.7 | <i>0.579</i> | 69.5 | <i>2.736</i> |
| WW-191762-5-9 | 5,000 | 3 | 19.1 | <i>0.750</i> | 76.2 | <i>3.000</i> | 21.6 | <i>0.850</i> | 88.9 | <i>3.500</i> | 68.2 | <i>2.686</i> |
| * WW-203127-10-9 | 10,000 | 4 | 20.3 | <i>0.800</i> | 12.7 | <i>0.500</i> | 22.9 | <i>0.900</i> | 15.9 | <i>0.625</i> | 94.6 | <i>3.730</i> |
| WW-229064-10-9 | 10,000 | 3 | 22.9 | <i>0.900</i> | 6.4 | <i>0.250</i> | 28.6 | <i>1.125</i> | 9.5 | <i>0.375</i> | 86.0 | <i>3.390</i> |
| * WW-250381-10-9 | 10,000 | 4 | 24.9 | <i>0.980</i> | 38.1 | <i>1.500</i> | 27.4 | <i>1.080</i> | 47.6 | <i>1.875</i> | 113.5 | <i>4.470</i> |
| WW-254045-10-9 | 10,000 | 3 | 25.4 | <i>1.000</i> | 4.6 | <i>0.180</i> | 31.8 | <i>1.250</i> | 8.5 | <i>0.333</i> | 95.3 | <i>3.750</i> |
| WW-254064-10-9 | 10,000 | 3 | 25.4 | <i>1.000</i> | 6.4 | <i>0.250</i> | 27.9 | <i>1.100</i> | 9.5 | <i>0.375</i> | 87.3 | <i>3.436</i> |
| WW-254097-10-9 | 10,000 | 3 | 25.4 | <i>1.000</i> | 9.7 | <i>0.380</i> | 27.9 | <i>1.100</i> | 12.7 | <i>0.500</i> | 87.4 | <i>3.440</i> |
| WW-254127-10-9 | 10,000 | 3 | 25.4 | <i>1.000</i> | 12.7 | <i>0.500</i> | 27.9 | <i>1.100</i> | 16.9 | <i>0.666</i> | 87.4 | <i>3.440</i> |
| WW-254254-10-9 | 10,000 | 3 | 25.4 | <i>1.000</i> | 25.4 | <i>1.000</i> | 27.9 | <i>1.100</i> | 28.6 | <i>1.125</i> | 87.4 | <i>3.440</i> |
| * WW-305047-10-9 | 10,000 | 2 | 30.5 | <i>1.200</i> | 4.7 | <i>0.185</i> | 33.0 | <i>1.300</i> | 7.8 | <i>0.306</i> | 69.5 | <i>2.736</i> |
| WW-318064-10-9 | 10,000 | 1 | 31.8 | <i>1.250</i> | 6.4 | <i>0.250</i> | N/A | N/A | 9.5 | <i>0.375</i> | 37.9 | <i>1.490</i> |
| WW-318097-10-9 | 10,000 | 1 | 31.8 | <i>1.250</i> | 9.7 | <i>0.380</i> | N/A | N/A | 12.7 | <i>0.500</i> | 37.8 | <i>1.488</i> |
| WW-381064-10-9 | 10,000 | 1 | 38.1 | <i>1.500</i> | 6.4 | <i>0.250</i> | N/A | N/A | 9.5 | <i>0.375</i> | 44.5 | <i>1.750</i> |
| * WW-381127-5-9 | 5,000 | 2 | 38.1 | <i>1.500</i> | 12.7 | <i>0.500</i> | 44.2 | <i>1.738</i> | 15.9 | <i>0.625</i> | 88.2 | <i>3.472</i> |
| WW-381191-5-9 | 5,000 | 2 | 38.1 | <i>1.500</i> | 19.1 | <i>0.750</i> | 43.2 | <i>1.700</i> | 22.2 | <i>0.875</i> | 87.6 | <i>3.450</i> |
| * WW-381381-2.5-9 | 2,500 | 2 | 38.1 | <i>1.500</i> | 38.1 | <i>1.500</i> | 44.5 | <i>1.750</i> | 40.8 | <i>1.607</i> | 88.9 | <i>3.500</i> |
| WW-445064-10-9 | 10,000 | 1 | 44.5 | <i>1.750</i> | 6.4 | <i>0.250</i> | N/A | N/A | 9.5 | <i>0.375</i> | 50.4 | <i>1.986</i> |
| WW-445102-5-9 | 5,000 | 1 | 44.5 | <i>1.750</i> | 10.2 | <i>0.400</i> | N/A | N/A | 12.7 | <i>0.500</i> | 50.4 | <i>1.986</i> |
| WW-445445-2-9 | 2,000 | 1 | 44.5 | <i>1.750</i> | 44.5 | <i>1.750</i> | N/A | N/A | 47.6 | <i>1.875</i> | 50.4 | <i>1.986</i> |
| WW-478175-5-9 | 5,000 | 1 | 47.8 | <i>1.880</i> | 17.5 | <i>0.690</i> | N/A | N/A | 24.4 | <i>0.962</i> | 66.0 | <i>2.600</i> |
| WW-508064-10-9 | 10,000 | 1 | 50.8 | <i>2.000</i> | 6.4 | <i>0.250</i> | N/A | N/A | 9.5 | <i>0.375</i> | 56.9 | <i>2.240</i> |
| WW-508095-5-9 | 5,000 | 1 | 50.8 | <i>2.000</i> | 9.5 | <i>0.375</i> | N/A | N/A | 12.7 | <i>0.500</i> | 57.2 | <i>2.250</i> |
| WW-508127-5-9 | 5,000 | 1 | 50.8 | <i>2.000</i> | 12.7 | <i>0.500</i> | N/A | N/A | 15.9 | <i>0.625</i> | 56.9 | <i>2.240</i> |
| WW-508254-5-9 | 5,000 | 1 | 50.8 | <i>2.000</i> | 25.4 | <i>1.000</i> | N/A | N/A | 28.6 | <i>1.125</i> | 57.2 | <i>2.250</i> |
| WW-508318-2.5-9 | 2,500 | 1 | 50.8 | <i>2.000</i> | 31.8 | <i>1.250</i> | N/A | N/A | 34.9 | <i>1.375</i> | 56.9 | <i>2.240</i> |
| WW-508508-3-9 | 3,000 | 1 | 50.8 | <i>2.000</i> | 50.8 | <i>2.000</i> | N/A | N/A | 54.6 | <i>2.150</i> | 54.0 | <i>2.130</i> |
| WW-523841-1.5-9 | 1,500 | 1 | 52.3 | <i>2.060</i> | 84.1 | <i>3.310</i> | N/A | N/A | 88.9 | <i>3.500</i> | 58.2 | <i>2.290</i> |
| WW-610419-2.5-9 | 2,500 | 1 | 61.0 | <i>2.400</i> | 41.9 | <i>1.650</i> | N/A | N/A | 45.5 | <i>1.792</i> | 67.3 | <i>2.650</i> |
| WW-699191-5-9 | 5,000 | 1 | 69.9 | <i>2.750</i> | 19.1 | <i>0.750</i> | N/A | N/A | 23.3 | <i>0.917</i> | 76.2 | <i>3.000</i> |
| WW-699254-5-9 | 5,000 | 1 | 69.9 | <i>2.750</i> | 25.4 | <i>1.000</i> | N/A | N/A | 28.6 | <i>1.125</i> | 76.2 | <i>3.000</i> |
| WW-762381-2.5-9 | 2,500 | 1 | 76.2 | <i>3.000</i> | 38.1 | <i>1.500</i> | N/A | N/A | 41.3 | <i>1.625</i> | 82.3 | <i>3.240</i> |
| WW-762508-2.5-9 | 2,500 | 1 | 76.2 | <i>3.000</i> | 50.8 | <i>2.000</i> | N/A | N/A | 54.0 | <i>2.125</i> | 82.6 | <i>3.240</i> |
| WW-762127-1-9 | 1,000 | 1 | 76.2 | <i>3.000</i> | 127.0 | <i>5.000</i> | N/A | N/A | 129.5 | <i>5.100</i> | 79.4 | <i>3.130</i> |
| WW-101508-2.5-9 | 2,500 | 1 | 101.6 | <i>4.000</i> | 50.8 | <i>2.000</i> | N/A | N/A | 54.6 | <i>2.150</i> | 104.1 | <i>4.100</i> |
| WW-101635-2.5-9 | 2,500 | 1 | 101.6 | <i>4.000</i> | 63.5 | <i>2.500</i> | N/A | N/A | 66.7 | <i>2.625</i> | 107.7 | <i>4.240</i> |
| WW-101762-1.8-9 | 1,800 | 1 | 101.6 | <i>4.000</i> | 76.2 | <i>3.000</i> | N/A | N/A | 79.4 | <i>3.125</i> | 104.1 | <i>4.100</i> |
| WW-101101-1.3-9 | 1,300 | 1 | 101.6 | <i>4.000</i> | 101.6 | <i>4.000</i> | N/A | N/A | 104.8 | <i>4.125</i> | 104.1 | <i>4.100</i> |
| WW-101165-0.85-9 | 850 | 1 | 101.6 | <i>4.000</i> | 165.1 | <i>6.500</i> | N/A | N/A | 168.3 | <i>6.680</i> | 104.9 | <i>4.130</i> |

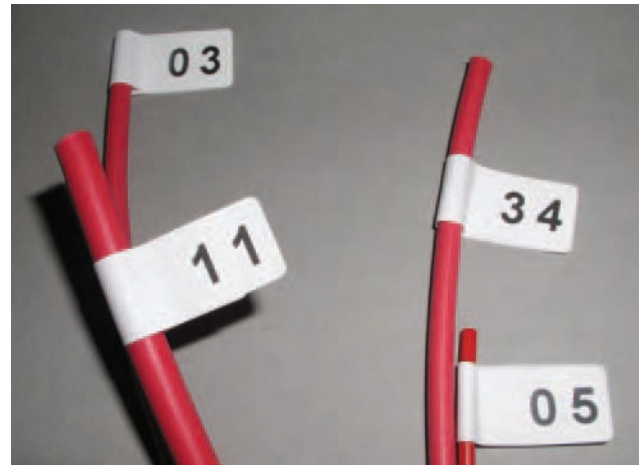
* NOTE: Standard Format Not Compatible with T200 Printers

NC Nylon cloth labels

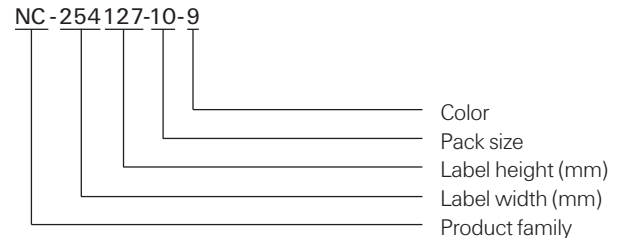
Tyco Electronics NC is a thermal transfer printable, flexible nylon cloth with a permanent acrylic adhesive, designed for application to irregular surfaces where conformability is required. It is ideal for wire marking and other round or flexible surfaces such as cables and tubing. NC is not recommended for outdoor use or immersion in liquid. For reliable print performance and durability, use with Tyco Electronics 1330-0607 ribbon.

Features and benefits

- Thermal transfer printable
- Surface coating applied to enhance ink receptivity
- Flexible material conforms to curved surfaces
- Several die-cut sizes available



Part numbering system



| | |
|----------------------------|------------------------------------|
| Specifications | TTDS-051 |
| Adhesive | Permanent acrylic |
| Service temperature | -40°C to +140°C -40°F to +284°F |
| Recommended printer | T300 Series printers |
| Recommended ribbon | 1330-0606-10* |

*Alternative printers and ribbons are available for special applications. Contact Tyco Electronics Identification for more information.

NC Nylon cloth labels

Ordering information



Product dimensions

| Product order code | Package quantity | Labels across | Label width (A) | | Label height (B) | | Horizontal repeat (C) | | Vertical repeat (D) | | Web width (E) | |
|--------------------|------------------|---------------|-----------------|---------------|------------------|---------------|-----------------------|---------------|---------------------|---------------|---------------|---------------|
| | | | mm | <i>inches</i> | mm | <i>inches</i> | mm | <i>inches</i> | mm | <i>inches</i> | mm | <i>inches</i> |
| NC-064064-25-9 | 25,000 | 12 | 6.4 | <i>0.250</i> | 6.4 | <i>0.250</i> | 6.4 | <i>0.250</i> | 9.5 | <i>0.375</i> | 82.2 | <i>3.240</i> |
| * NC-080080-10-9 | 10,000 | 8 | 8.0 | <i>0.315</i> | 8.0 | <i>0.315</i> | 9.9 | <i>0.390</i> | 13.3 | <i>0.525</i> | 83.3 | <i>3.280</i> |
| NC-095080-25-9 | 25,000 | 5 | 9.5 | <i>0.375</i> | 8.0 | <i>0.315</i> | 12.2 | <i>0.480</i> | 12.7 | <i>0.500</i> | 64.3 | <i>2.531</i> |
| NC-095095-10-9 | 10,000 | 7 | 9.5 | <i>0.375</i> | 9.5 | <i>0.375</i> | 11.1 | <i>0.437</i> | 12.7 | <i>0.500</i> | 82.1 | <i>3.230</i> |
| NC-127111-10-9 | 10,000 | 5 | 12.7 | <i>0.500</i> | 11.1 | <i>0.437</i> | 16.8 | <i>0.662</i> | 14.3 | <i>0.563</i> | 86.0 | <i>3.380</i> |
| NC-127127-10-9 | 10,000 | 5 | 12.7 | <i>0.500</i> | 12.7 | <i>0.500</i> | 15.9 | <i>0.625</i> | 15.9 | <i>0.625</i> | 82.6 | <i>3.250</i> |
| * NC-165051-25-9 | 25,000 | 4 | 16.5 | <i>0.650</i> | 5.1 | <i>0.200</i> | 17.8 | <i>0.700</i> | 8.3 | <i>0.325</i> | 75.8 | <i>2.990</i> |
| * NC-178095-10-9 | 10,000 | 4 | 17.8 | <i>0.700</i> | 9.5 | <i>0.375</i> | 19.1 | <i>0.750</i> | 12.7 | <i>0.500</i> | 80.9 | <i>3.190</i> |
| * NC-191064-10-9 | 10,000 | 4 | 19.1 | <i>0.750</i> | 6.4 | <i>0.250</i> | 21.6 | <i>0.850</i> | 9.5 | <i>0.375</i> | 89.9 | <i>3.540</i> |
| NC-229064-10-9 | 10,000 | 3 | 22.9 | <i>0.900</i> | 6.4 | <i>0.250</i> | 28.6 | <i>1.125</i> | 9.5 | <i>0.375</i> | 86.0 | <i>3.390</i> |
| NC-254064-10-9 | 10,000 | 3 | 25.4 | <i>1.000</i> | 6.4 | <i>0.250</i> | 27.9 | <i>1.100</i> | 9.5 | <i>0.375</i> | 87.3 | <i>3.436</i> |
| NC-254097-10-9 | 10,000 | 3 | 25.4 | <i>1.000</i> | 9.7 | <i>0.380</i> | 27.9 | <i>1.100</i> | 12.7 | <i>0.500</i> | 87.4 | <i>3.440</i> |
| NC-254127-10-9 | 10,000 | 3 | 25.4 | <i>1.000</i> | 12.7 | <i>0.500</i> | 27.9 | <i>1.100</i> | 16.9 | <i>0.666</i> | 87.4 | <i>3.440</i> |
| NC-318064-10-9 | 10,000 | 1 | 31.8 | <i>1.250</i> | 6.4 | <i>0.250</i> | N/A | N/A | 9.5 | <i>0.375</i> | 37.9 | <i>1.490</i> |
| NC-381064-10-S1-9 | 10,000 | 1** | 38.1 | <i>1.500</i> | 6.4 | <i>0.250</i> | N/A | N/A | 9.5 | <i>0.375</i> | 44.5 | <i>1.750</i> |
| NC-381064-10-9 | 10,000 | 1 | 38.1 | <i>1.500</i> | 6.4 | <i>0.250</i> | N/A | N/A | 9.5 | <i>0.375</i> | 44.5 | <i>1.750</i> |
| * NC-381127-5-9 | 5,000 | 2 | 38.1 | <i>1.500</i> | 12.7 | <i>0.500</i> | 44.2 | <i>1.738</i> | 15.9 | <i>0.625</i> | 88.2 | <i>3.472</i> |
| NC-445064-10-9 | 10,000 | 1 | 44.5 | <i>1.750</i> | 6.4 | <i>0.250</i> | N/A | N/A | 9.5 | <i>0.375</i> | 50.4 | <i>1.986</i> |
| NC-445102-5-9 | 5,000 | 1 | 44.5 | <i>1.750</i> | 10.2 | <i>0.400</i> | N/A | N/A | 12.7 | <i>0.500</i> | 50.4 | <i>1.986</i> |
| NC-445445-2-9 | 2,000 | 1 | 44.5 | <i>1.750</i> | 44.5 | <i>1.750</i> | N/A | N/A | 47.6 | <i>1.875</i> | 50.4 | <i>1.986</i> |
| NC-508064-10-9 | 10,000 | 1 | 50.8 | <i>2.000</i> | 6.4 | <i>0.250</i> | N/A | N/A | 9.5 | <i>0.375</i> | 56.9 | <i>2.240</i> |
| NC-508095-5-9 | 5,000 | 1 | 50.8 | <i>2.000</i> | 9.5 | <i>0.375</i> | N/A | N/A | 12.7 | <i>0.500</i> | 57.2 | <i>2.250</i> |
| NC-508127-5-9 | 5,000 | 1 | 50.8 | <i>2.000</i> | 12.7 | <i>0.500</i> | N/A | N/A | 15.9 | <i>0.625</i> | 56.9 | <i>2.240</i> |
| NC-523841-1.5-9 | 1,500 | 1 | 52.3 | <i>2.060</i> | 84.1 | <i>3.310</i> | N/A | N/A | 88.9 | <i>3.500</i> | 58.2 | <i>2.290</i> |

* NOTE: Standard Format Not Compatible with T200 Printers

** Perforated

NC Nylon cloth wire markers

NC is a thermal transfer printable, flexible nylon cloth with a permanent acrylic adhesive. These formats are designed specifically for wrap around wire and cable marking applications. For reliable print performance and durability, use with Tyco Electronics 1330-0606 ribbon.

Features and benefits

- Thermal transfer printable
- Flexible cloth material conforms well for wrap around wire marking



| | |
|----------------------------|---------------------------------|
| Specifications | TTDS-051 |
| Adhesive | Permanent acrylic |
| Service temperature | -40°C to +140°C -40°F to +284°F |
| Recommended printer | T300 Series printers |
| Recommended ribbon | 1330-0606-10* |

*Alternative printers and ribbons are available for special applications. Contact Tyco Electronics Identification for more information.

Part numbering system



NC Nylon cloth wire markers

Ordering information



Product dimensions

| Product order code | Package quantity | Labels across | Label width (A) | | Label height (B) | | Horizontal repeat (C) | | Vertical repeat (D) | | Web width (E) | |
|--------------------|------------------|---------------|-----------------|---------------|------------------|---------------|-----------------------|---------------|---------------------|---------------|---------------|---------------|
| | | | mm | <i>inches</i> | mm | <i>inches</i> | mm | <i>inches</i> | mm | <i>inches</i> | mm | <i>inches</i> |
| NC-076191-10-9 | 10,000 | 8 | 7.6 | <i>0.300</i> | 19.1 | <i>0.750</i> | 7.6 | <i>0.300</i> | 22.2 | <i>0.875</i> | 67.3 | <i>2.650</i> |
| * NC-127191-10-9 | 10,000 | 4 | 12.7 | <i>0.500</i> | 19.1 | <i>0.750</i> | 15.2 | <i>0.600</i> | 22.2 | <i>0.875</i> | 63.5 | <i>2.500</i> |
| NC-127365-10-9 | 10,000 | 6 | 12.7 | <i>0.500</i> | 36.5 | <i>1.437</i> | 16.8 | <i>0.662</i> | 42.2 | <i>1.661</i> | 102.8 | <i>4.046</i> |
| * NC-191254-10-9 | 10,000 | 4 | 19.1 | <i>0.750</i> | 25.4 | <i>1.000</i> | 22.2 | <i>0.875</i> | 31.8 | <i>1.250</i> | 91.7 | <i>3.611</i> |
| NC-191762-5-9 | 5,000 | 3 | 19.1 | <i>0.750</i> | 76.2 | <i>3.000</i> | 21.6 | <i>0.850</i> | 88.9 | <i>3.500</i> | 68.2 | <i>2.686</i> |
| * NC-250381-10-9 | 10,000 | 4 | 24.9 | <i>0.980</i> | 38.1 | <i>1.500</i> | 27.4 | <i>1.080</i> | 47.6 | <i>1.875</i> | 113.5 | <i>4.470</i> |
| NC-254254-10-9 | 10,000 | 3 | 25.4 | <i>1.000</i> | 25.4 | <i>1.000</i> | 27.9 | <i>1.100</i> | 28.6 | <i>1.125</i> | 87.4 | <i>3.440</i> |
| * NC-381381-2.5-9 | 2,500 | 2 | 38.1 | <i>1.500</i> | 38.1 | <i>1.500</i> | 44.5 | <i>1.750</i> | 40.8 | <i>1.607</i> | 88.9 | <i>3.500</i> |
| * NC-381635-5-9 | 5,000 | 2 | 38.1 | <i>1.500</i> | 63.5 | <i>2.500</i> | 40.6 | <i>1.600</i> | 66.7 | <i>2.625</i> | 84.7 | <i>3.336</i> |
| NC-508508-3-9 | 3,000 | 1 | 50.8 | <i>2.000</i> | 50.8 | <i>2.000</i> | N/A | <i>N/A</i> | 54.6 | <i>2.150</i> | 54.0 | <i>2.130</i> |

* NOTE: Standard Format Not Compatible with T200 Printers*

NC Nylon cloth terminal markers

NC is a thermal transfer printable, flexible nylon cloth with a permanent acrylic adhesive. These continuous strip formats are designed specifically for terminal block marking applications. For reliable print performance and durability, use with Tyco Electronics 1330-0606 ribbon.

Features and benefits

- Thermal transfer printable
- Continuous format is universal for any length terminal strip marker



| | |
|----------------------------|------------------------------------|
| Specifications | TTDS-051 |
| Adhesive | Permanent acrylic |
| Service temperature | -40°C to +140°C -40°F to +284°F |
| Recommended printer | T300 Series printers |
| Recommended ribbon | 1330-0606-10* |

**Alternative printers and ribbons are available for special applications. Contact Tyco Electronics Identification for more information.*

NC Nylon cloth terminal markers

Ordering information



Product dimensions

| Product order code | Package quantity | Labels across | Label width (A) | | Label height (B) | | Horizontal repeat (C) | | Vertical repeat (D) | | Web width (E) | |
|--------------------|------------------|---------------|-----------------|---------------|------------------|-------------|-----------------------|---------------|---------------------|---------------|---------------|---------------|
| | | | mm | <i>inches</i> | meters | <i>feet</i> | mm | <i>inches</i> | mm | <i>inches</i> | mm | <i>inches</i> |
| NC155WE-100S4 | 500 FEET | 5 | 7.9 | <i>0.312</i> | 30.5 | <i>100</i> | 7.9 | <i>0.312</i> | N/A | <i>N/A</i> | 45.7 | <i>1.800</i> |
| NC150WE-100S3 | 400 FEET | 4 | 9.5 | <i>0.375</i> | 30.5 | <i>100</i> | 9.5 | <i>0.375</i> | N/A | <i>N/A</i> | 44.5 | <i>1.750</i> |

Kapton® labels

Tyco Electronics polyimide (Kapton®) labels are all ideal for high temperature labeling requirements such as printed circuit boards. They are suitable for direct wave (bottom side) and IR reflow (top side) PCB applications. Tyco Electronics Kapton® labels are designed to withstand the fluxes, cleaning solvents and molten solder encountered in the manufacture of printed circuit boards. They offer excellent contrast for bar code applications. Tyco Electronics Kapton® labels are suitable for the harshest high temperature applications. For reliable print performance and durability, use with Tyco Electronics's 1330-0619 ribbon.

Features and benefits

- UL Listed: T1K and T2K
- Thermal transfer printable
- High temperature permanent acrylic adhesive

T1K

- Gloss white topcoat
- Withstands surface mount board processes on either the top or bottom side of the board
- Low profile 1 mil film offers polyimide thermal performance at competitive cost
- Ideal for manual apply applications

T2K

- Gloss white topcoat
- Withstands surface mount board processes on either the top or bottom side of the board
- Ideal for auto apply applications

KTT

- Matte tan topcoat
- Withstands surface mount board processes on either the top or bottom side of the board
- Product approved for aerospace/defense applications.
- Low outgassing

TSK

- High opacity gloss white topcoat
- Withstands surface mount board processes on either the top or bottom side of the board
- Deemed to be a static safe product in accordance with EIA 625, EIA 541. Test methods employed were in accordance with EOS/ESD S11.11
- Ideal for auto apply applications



Specifications/Approvals

| | | | |
|------------------|----|-----|---------------------|
| Tyco Electronics | | T1K | TTDS-034 |
| | | T2K | TTDS-035 |
| | | TSK | TTDS-085 |
| Industry | UL | T1K | MH17292 Group PGJ12 |
| | | T2K | MH17292 Group PGJ12 |

Adhesive

Permanent acrylic

Service temperature

| | | |
|---------------------------------------|-----------------|-----------------|
| T1K ¹ , T2K ² , | -40°C to +260°C | -40°F to +500°F |
| TSK ² , KTT ² | | |

¹ Flash exposure to +472°C (+800°F)

² Flash exposure to +538°C (+1000°F)

Recommended printer

| | |
|--------------------|--------|
| T1K, T2K, TSK, T2Y | T312S* |
| KTT | |

Recommended ribbon

1330-0619-10*

* Alternative printers and ribbons are available for special applications. Contact Tyco Electronics Identification for more information.

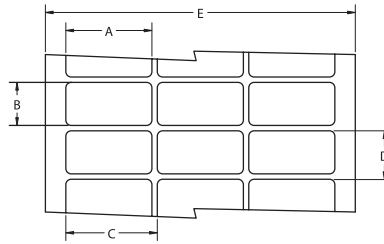
Part numbering system

T1K-044033-10-9



T1K White Kapton® labels

Ordering information



Product dimensions

| Product order code | Package quantity | Labels across | Label width (A) | | Label height (B) | | Horizontal repeat (C) | | Vertical repeat (D) | | Web width (E) | |
|--------------------|------------------|---------------|-----------------|---------------|------------------|---------------|-----------------------|---------------|---------------------|---------------|---------------|---------------|
| | | | mm | <i>inches</i> | mm | <i>inches</i> | mm | <i>inches</i> | mm | <i>inches</i> | mm | <i>inches</i> |
| T1K-044033-10-9 | 10,000 | 20 | 4.4 | <i>0.170</i> | 3.3 | <i>0.130</i> | 4.4 | <i>0.170</i> | 9.5 | <i>0.375</i> | 92.4 | <i>3.636</i> |
| T1K-064064-25-9 | 25,000 | 12 | 6.4 | <i>0.250</i> | 6.4 | <i>0.250</i> | 6.4 | <i>0.250</i> | 9.5 | <i>0.375</i> | 82.2 | <i>3.240</i> |
| *T1K-080080-10-9 | 10,000 | 8 | 8.0 | <i>0.315</i> | 8.0 | <i>0.315</i> | 9.9 | <i>0.390</i> | 13.3 | <i>0.525</i> | 83.3 | <i>3.280</i> |
| T1K-095080-25-9 | 25,000 | 5 | 9.5 | <i>0.375</i> | 8.0 | <i>0.315</i> | 12.2 | <i>0.480</i> | 12.7 | <i>0.500</i> | 64.3 | <i>2.531</i> |
| T1K-095095-10-9 | 10,000 | 7 | 9.5 | <i>0.375</i> | 9.5 | <i>0.375</i> | 11.1 | <i>0.437</i> | 12.7 | <i>0.500</i> | 82.1 | <i>3.230</i> |
| T1K-127032-10-9 | 10,000 | 5 | 12.7 | <i>0.500</i> | 3.2 | <i>0.125</i> | 19.1 | <i>0.750</i> | 3.2 | <i>0.250</i> | 94.9 | <i>3.736</i> |
| T1K-127111-10-9 | 10,000 | 5 | 12.7 | <i>0.500</i> | 11.1 | <i>0.437</i> | 16.8 | <i>0.662</i> | 14.3 | <i>0.563</i> | 86.0 | <i>3.380</i> |
| T1K-127127-10-9 | 10,000 | 5 | 12.7 | <i>0.500</i> | 12.7 | <i>0.500</i> | 15.9 | <i>0.625</i> | 15.9 | <i>0.625</i> | 82.6 | <i>3.250</i> |
| *T1K-165051-25-9 | 25,000 | 4 | 16.5 | <i>0.650</i> | 5.1 | <i>0.200</i> | 17.8 | <i>0.700</i> | 8.3 | <i>0.325</i> | 75.8 | <i>2.990</i> |
| T1K-171171-10-9 | 10,000 | 5 | 17.1 | <i>0.674</i> | 17.1 | <i>0.674</i> | 19.7 | <i>0.774</i> | 20.3 | <i>0.800</i> | 101.8 | <i>4.006</i> |
| *T1K-178095-10-9 | 10,000 | 4 | 17.8 | <i>0.700</i> | 9.5 | <i>0.375</i> | 19.1 | <i>0.750</i> | 12.7 | <i>0.500</i> | 80.9 | <i>3.190</i> |
| *T1K-191064-10-9 | 10,000 | 4 | 19.1 | <i>0.750</i> | 6.4 | <i>0.250</i> | 21.6 | <i>0.850</i> | 9.5 | <i>0.375</i> | 89.9 | <i>3.540</i> |
| T1K-229064-10-9 | 10,000 | 3 | 22.9 | <i>0.900</i> | 6.4 | <i>0.250</i> | 28.6 | <i>1.125</i> | 9.5 | <i>0.375</i> | 86.0 | <i>3.390</i> |
| T1K-254045-10-9 | 10,000 | 3 | 25.4 | <i>1.000</i> | 4.6 | <i>0.180</i> | 31.8 | <i>1.250</i> | 8.5 | <i>0.333</i> | 95.3 | <i>3.750</i> |
| T1K-254064-10-9 | 10,000 | 3 | 25.4 | <i>1.000</i> | 6.4 | <i>0.250</i> | 27.9 | <i>1.100</i> | 9.5 | <i>0.375</i> | 87.3 | <i>3.436</i> |
| T1K-254097-10-9 | 10,000 | 3 | 25.4 | <i>1.000</i> | 9.7 | <i>0.380</i> | 27.9 | <i>1.100</i> | 12.7 | <i>0.500</i> | 87.4 | <i>3.440</i> |
| T1K-254127-10-9 | 10,000 | 3 | 25.4 | <i>1.000</i> | 12.7 | <i>0.500</i> | 27.9 | <i>1.100</i> | 16.9 | <i>0.666</i> | 87.4 | <i>3.440</i> |
| T1K-254254-10-9 | 10,000 | 3 | 25.4 | <i>1.000</i> | 25.4 | <i>1.000</i> | 27.9 | <i>1.100</i> | 28.6 | <i>1.125</i> | 87.4 | <i>3.440</i> |
| *T1K-305047-10-9 | 10,000 | 2 | 30.5 | <i>1.200</i> | 4.7 | <i>0.185</i> | 33.0 | <i>1.300</i> | 7.8 | <i>0.306</i> | 69.5 | <i>2.736</i> |
| T1K-318064-10-9 | 10,000 | 1 | 31.8 | <i>1.250</i> | 6.4 | <i>0.250</i> | N/A | N/A | 9.5 | <i>0.375</i> | 37.9 | <i>1.490</i> |
| T1K-381020-10-9 | 10,000 | 1 | 38.1 | <i>1.500</i> | 2.0 | <i>0.080</i> | N/A | N/A | 10.7 | <i>0.423</i> | 44.1 | <i>1.740</i> |
| *T1K-381127-5-9 | 5,000 | 2 | 38.1 | <i>1.500</i> | 12.7 | <i>0.500</i> | 44.2 | <i>1.738</i> | 15.9 | <i>0.625</i> | 88.2 | <i>3.472</i> |
| T1K-381381-2-5-9 | 2,500 | 2 | 38.1 | <i>1.500</i> | 38.1 | <i>1.500</i> | 44.5 | <i>1.750</i> | 40.8 | <i>1.607</i> | 88.9 | <i>3.500</i> |
| T1K-445064-10-9 | 10,000 | 1 | 44.5 | <i>1.750</i> | 6.4 | <i>0.250</i> | N/A | N/A | 9.5 | <i>0.375</i> | 50.4 | <i>1.986</i> |
| T1K-445102-5-9 | 5,000 | 1 | 44.5 | <i>1.750</i> | 10.2 | <i>0.400</i> | N/A | N/A | 12.7 | <i>0.500</i> | 50.4 | <i>1.386</i> |
| T1K-508064-10-9 | 10,000 | 1 | 50.8 | <i>2.000</i> | 6.4 | <i>0.250</i> | N/A | N/A | 9.5 | <i>0.375</i> | 56.9 | <i>2.240</i> |
| T1K-508095-5-9 | 5,000 | 1 | 50.8 | <i>2.000</i> | 9.5 | <i>0.375</i> | N/A | N/A | 12.7 | <i>0.500</i> | 57.2 | <i>2.250</i> |
| T1K-508127-5-9 | 5,000 | 1 | 50.8 | <i>2.000</i> | 12.7 | <i>0.500</i> | N/A | N/A | 15.9 | <i>0.625</i> | 56.9 | <i>2.240</i> |

* NOTE: Kapton®/polyimide labels not compatible with T200 Printers

T2K White Kapton® labels

Ordering information



Product dimensions

| Product order code | Package quantity | Labels across | Label width (A) | | Label height (B) | | Horizontal repeat (C) | | Vertical repeat (D) | | Web width (E) | |
|--------------------|------------------|---------------|-----------------|---------------|------------------|---------------|-----------------------|---------------|---------------------|---------------|---------------|---------------|
| | | | mm | <i>inches</i> | mm | <i>inches</i> | mm | <i>inches</i> | mm | <i>inches</i> | mm | <i>inches</i> |
| T2K-044033-10-9 | 10,000 | 20 | 4.4 | <i>0.170</i> | 3.3 | <i>0.130</i> | 4.4 | <i>0.170</i> | 9.5 | <i>0.375</i> | 92.4 | <i>3.636</i> |
| T2K-064064-25-9 | 25,000 | 12 | 6.4 | <i>0.250</i> | 6.4 | <i>0.250</i> | 6.4 | <i>0.250</i> | 9.5 | <i>0.375</i> | 82.2 | <i>3.240</i> |
| *T2K-080080-10-9 | 10,000 | 8 | 8.0 | <i>0.315</i> | 8.0 | <i>0.315</i> | 9.9 | <i>0.390</i> | 13.3 | <i>0.525</i> | 83.3 | <i>3.280</i> |
| T2K-095080-25-9 | 25,000 | 5 | 9.5 | <i>0.375</i> | 8.0 | <i>0.315</i> | 12.2 | <i>0.480</i> | 12.7 | <i>0.500</i> | 64.3 | <i>2.531</i> |
| T2K-095095-10-9 | 10,000 | 7 | 9.5 | <i>0.375</i> | 9.5 | <i>0.375</i> | 11.1 | <i>0.437</i> | 12.7 | <i>0.500</i> | 82.1 | <i>3.230</i> |
| T2K-127032-10-9 | 10,000 | 5 | 12.7 | <i>0.500</i> | 3.2 | <i>0.125</i> | 19.1 | <i>0.750</i> | 3.2 | <i>0.250</i> | 94.9 | <i>3.736</i> |
| T2K-127111-10-9 | 10,000 | 5 | 12.7 | <i>0.500</i> | 11.1 | <i>0.437</i> | 16.8 | <i>0.662</i> | 14.3 | <i>0.563</i> | 86.0 | <i>3.380</i> |
| T2K-127127-10-9 | 10,000 | 5 | 12.7 | <i>0.500</i> | 12.7 | <i>0.500</i> | 15.9 | <i>0.625</i> | 15.9 | <i>0.625</i> | 82.6 | <i>3.250</i> |
| *T2K-165051-25-9 | 25,000 | 4 | 16.5 | <i>0.650</i> | 5.1 | <i>0.200</i> | 17.8 | <i>0.700</i> | 8.3 | <i>0.325</i> | 75.8 | <i>2.990</i> |
| T2K-171171-10-9 | 10,000 | 5 | 17.1 | <i>0.674</i> | 17.1 | <i>0.674</i> | 19.7 | <i>0.774</i> | 20.3 | <i>0.800</i> | 101.8 | <i>4.006</i> |
| *T2K-178095-10-9 | 10,000 | 4 | 17.8 | <i>0.700</i> | 9.5 | <i>0.375</i> | 19.1 | <i>0.750</i> | 12.7 | <i>0.500</i> | 80.9 | <i>3.190</i> |
| *T2K-191064-10-9 | 10,000 | 4 | 19.1 | <i>0.750</i> | 6.4 | <i>0.250</i> | 21.6 | <i>0.850</i> | 9.5 | <i>0.375</i> | 89.9 | <i>3.540</i> |
| T2K-229064-10-9 | 10,000 | 3 | 22.9 | <i>0.900</i> | 6.4 | <i>0.250</i> | 28.6 | <i>1.125</i> | 9.5 | <i>0.375</i> | 86.0 | <i>3.390</i> |
| T2K-254045-10-9 | 10,000 | 3 | 25.4 | <i>1.000</i> | 4.6 | <i>0.180</i> | 31.8 | <i>1.250</i> | 8.5 | <i>0.333</i> | 95.3 | <i>3.750</i> |
| T2K-254064-10-9 | 10,000 | 3 | 25.4 | <i>1.000</i> | 6.4 | <i>0.250</i> | 27.9 | <i>1.100</i> | 9.5 | <i>0.375</i> | 87.3 | <i>3.436</i> |
| T2K-254097-10-9 | 10,000 | 3 | 25.4 | <i>1.000</i> | 9.7 | <i>0.380</i> | 27.9 | <i>1.100</i> | 12.7 | <i>0.500</i> | 87.4 | <i>3.440</i> |
| T2K-254127-10-9 | 10,000 | 3 | 25.4 | <i>1.000</i> | 12.7 | <i>0.500</i> | 27.9 | <i>1.100</i> | 16.9 | <i>0.666</i> | 87.4 | <i>3.440</i> |
| T2K-254254-10-9 | 10,000 | 3 | 25.4 | <i>1.000</i> | 25.4 | <i>1.000</i> | 27.9 | <i>1.100</i> | 28.6 | <i>1.125</i> | 87.4 | <i>3.440</i> |
| *T2K-305047-10-9 | 10,000 | 2 | 30.5 | <i>1.200</i> | 4.7 | <i>0.185</i> | 33.0 | <i>1.300</i> | 7.8 | <i>0.306</i> | 69.5 | <i>2.736</i> |
| T2K-318064-10-9 | 10,000 | 1 | 31.8 | <i>1.250</i> | 6.4 | <i>0.250</i> | N/A | N/A | 9.5 | <i>0.375</i> | 37.9 | <i>1.490</i> |
| T2K-381020-10-9 | 10,000 | 1 | 38.1 | <i>1.500</i> | 2.0 | <i>0.080</i> | N/A | N/A | 10.7 | <i>0.423</i> | 44.1 | <i>1.740</i> |
| T2K-381064-10-9 | 10,000 | 1 | 38.1 | <i>1.500</i> | 6.4 | <i>0.250</i> | N/A | N/A | 9.5 | <i>0.375</i> | 44.5 | <i>1.750</i> |
| *T2K-381127-5-9 | 5,000 | 2 | 38.1 | <i>1.500</i> | 12.7 | <i>0.500</i> | 44.2 | <i>1.738</i> | 15.9 | <i>0.625</i> | 88.2 | <i>3.472</i> |
| T2K-381381-2-5-9 | 2,500 | 2 | 38.1 | <i>1.500</i> | 38.1 | <i>1.500</i> | 44.5 | <i>1.750</i> | 40.8 | <i>1.607</i> | 88.9 | <i>3.500</i> |
| T2K-445064-10-9 | 10,000 | 1 | 44.5 | <i>1.750</i> | 6.4 | <i>0.250</i> | N/A | N/A | 9.5 | <i>0.375</i> | 50.4 | <i>1.986</i> |
| T2K-445102-5-9 | 5,000 | 1 | 44.5 | <i>1.750</i> | 10.2 | <i>0.400</i> | N/A | N/A | 12.7 | <i>0.500</i> | 50.4 | <i>1.386</i> |
| T2K-508064-10-9 | 10,000 | 1 | 50.8 | <i>2.000</i> | 6.4 | <i>0.250</i> | N/A | N/A | 9.5 | <i>0.375</i> | 56.9 | <i>2.240</i> |
| T2K-508091-5-9 | 5,000 | 1 | 50.8 | <i>2.000</i> | 9.1 | <i>0.358</i> | N/A | N/A | 12.2 | <i>0.480</i> | 57.2 | <i>2.250</i> |
| T2K-508095-5-9 | 5,000 | 1 | 50.8 | <i>2.000</i> | 9.5 | <i>0.375</i> | N/A | N/A | 12.7 | <i>0.500</i> | 57.2 | <i>2.250</i> |
| T2K-508127-5-9 | 5,000 | 1 | 50.8 | <i>2.000</i> | 12.7 | <i>0.500</i> | N/A | N/A | 15.9 | <i>0.625</i> | 56.9 | <i>2.240</i> |

* NOTE: Kapton®/polyimide labels not compatible with T200 Printers

TSK White polyimide labels

Ordering information



Product dimensions

| Product order code | Package quantity | Labels across | Label width (A) | | Label height (B) | | Horizontal repeat (C) | | Vertical repeat (D) | | Web width (E) | |
|--------------------|------------------|---------------|-----------------|---------------|------------------|---------------|-----------------------|---------------|---------------------|---------------|---------------|---------------|
| | | | mm | <i>inches</i> | mm | <i>inches</i> | mm | <i>inches</i> | mm | <i>inches</i> | mm | <i>inches</i> |
| TSK-044033-10-9 | 10,000 | 20 | 4.4 | <i>0.170</i> | 3.3 | <i>0.130</i> | 4.4 | <i>0.170</i> | 9.5 | <i>0.375</i> | 92.4 | <i>3.636</i> |
| TSK-064064-25-9 | 25,000 | 12 | 6.4 | <i>0.250</i> | 6.4 | <i>0.250</i> | 6.4 | <i>0.250</i> | 9.5 | <i>0.375</i> | 82.2 | <i>3.240</i> |
| *TSK-080080-10-9 | 10,000 | 8 | 8.0 | <i>0.315</i> | 8.0 | <i>0.315</i> | 9.9 | <i>0.390</i> | 13.3 | <i>0.525</i> | 83.3 | <i>3.280</i> |
| TSK-095080-25-9 | 25,000 | 5 | 9.5 | <i>0.375</i> | 8.0 | <i>0.315</i> | 12.2 | <i>0.480</i> | 12.7 | <i>0.500</i> | 64.3 | <i>2.531</i> |
| TSK-095095-10-9 | 10,000 | 7 | 9.5 | <i>0.375</i> | 9.5 | <i>0.375</i> | 11.1 | <i>0.437</i> | 12.7 | <i>0.500</i> | 82.1 | <i>3.230</i> |
| TSK-127032-10-9 | 10,000 | 5 | 12.7 | <i>0.500</i> | 3.2 | <i>0.125</i> | 19.1 | <i>0.750</i> | 3.2 | <i>0.250</i> | 94.9 | <i>3.736</i> |
| TSK-127111-10-9 | 10,000 | 5 | 12.7 | <i>0.500</i> | 11.1 | <i>0.437</i> | 16.8 | <i>0.662</i> | 14.3 | <i>0.563</i> | 86.0 | <i>3.380</i> |
| TSK-127127-10-9 | 10,000 | 5 | 12.7 | <i>0.500</i> | 12.7 | <i>0.500</i> | 15.9 | <i>0.625</i> | 15.9 | <i>0.625</i> | 82.6 | <i>3.250</i> |
| TSK-165051-25-9 | 25,000 | 4 | 16.5 | <i>0.650</i> | 5.1 | <i>0.200</i> | 17.8 | <i>0.700</i> | 8.3 | <i>0.325</i> | 75.8 | <i>2.990</i> |
| TSK-171171-10-9 | 10,000 | 5 | 17.1 | <i>0.674</i> | 17.1 | <i>0.674</i> | 19.7 | <i>0.774</i> | 20.3 | <i>0.800</i> | 101.8 | <i>4.006</i> |
| TSK-178095-10-9 | 10,000 | 4 | 17.8 | <i>0.700</i> | 9.5 | <i>0.375</i> | 19.1 | <i>0.750</i> | 12.7 | <i>0.500</i> | 80.9 | <i>3.190</i> |
| *TSK-191064-10-9 | 10,000 | 4 | 19.1 | <i>0.750</i> | 6.4 | <i>0.250</i> | 21.6 | <i>0.850</i> | 9.5 | <i>0.375</i> | 89.9 | <i>3.540</i> |
| TSK-229064-10-9 | 10,000 | 3 | 22.9 | <i>0.900</i> | 6.4 | <i>0.250</i> | 28.6 | <i>1.125</i> | 9.5 | <i>0.375</i> | 86.0 | <i>3.390</i> |
| TSK-254045-10-9 | 10,000 | 3 | 25.4 | <i>1.000</i> | 4.6 | <i>0.180</i> | 31.8 | <i>1.250</i> | 8.5 | <i>0.333</i> | 95.3 | <i>3.750</i> |
| TSK-254064-10-9 | 10,000 | 3 | 25.4 | <i>1.000</i> | 6.4 | <i>0.250</i> | 27.9 | <i>1.100</i> | 9.5 | <i>0.375</i> | 87.3 | <i>3.436</i> |
| TSK-254097-10-9 | 10,000 | 3 | 25.4 | <i>1.000</i> | 9.7 | <i>0.380</i> | 27.9 | <i>1.100</i> | 12.7 | <i>0.500</i> | 87.4 | <i>3.440</i> |
| TSK-254127-10-9 | 10,000 | 3 | 25.4 | <i>1.000</i> | 12.7 | <i>0.500</i> | 27.9 | <i>1.100</i> | 16.9 | <i>0.666</i> | 87.4 | <i>3.440</i> |
| TSK-254254-10-9 | 10,000 | 3 | 25.4 | <i>1.000</i> | 25.4 | <i>1.000</i> | 27.9 | <i>1.100</i> | 28.6 | <i>1.125</i> | 87.4 | <i>3.440</i> |
| *TSK-305047-10-9 | 10,000 | 2 | 30.5 | <i>1.200</i> | 4.7 | <i>0.185</i> | 33.0 | <i>1.300</i> | 7.8 | <i>0.306</i> | 69.5 | <i>2.736</i> |
| TSK-318064-10-9 | 10,000 | 1 | 31.8 | <i>1.250</i> | 6.4 | <i>0.250</i> | N/A | N/A | 9.5 | <i>0.375</i> | 37.9 | <i>1.490</i> |
| TSK-381020-10-9 | 10,000 | 1 | 38.1 | <i>1.500</i> | 2.0 | <i>0.080</i> | N/A | N/A | 10.7 | <i>0.423</i> | 44.1 | <i>1.740</i> |
| TSK-381064-10-9 | 10,000 | 1 | 38.1 | <i>1.500</i> | 6.4 | <i>0.250</i> | N/A | N/A | 9.5 | <i>0.375</i> | 44.5 | <i>1.750</i> |
| *TSK-381127-5-9 | 5,000 | 2 | 38.1 | <i>1.500</i> | 12.7 | <i>0.500</i> | 44.2 | <i>1.738</i> | 15.9 | <i>0.625</i> | 88.2 | <i>3.472</i> |
| TSK-381381-2-5-9 | 2,500 | 2 | 38.1 | <i>1.500</i> | 38.1 | <i>1.500</i> | 44.5 | <i>1.750</i> | 40.8 | <i>1.607</i> | 88.9 | <i>3.500</i> |
| TSK-445064-10-9 | 10,000 | 1 | 44.5 | <i>1.750</i> | 6.4 | <i>0.250</i> | N/A | N/A | 9.5 | <i>0.375</i> | 50.4 | <i>1.986</i> |
| TSK-445102-5-9 | 5,000 | 1 | 44.5 | <i>1.750</i> | 10.2 | <i>0.400</i> | N/A | N/A | 12.7 | <i>0.500</i> | 50.4 | <i>1.386</i> |
| TSK-508064-10-9 | 10,000 | 1 | 50.8 | <i>2.000</i> | 9.5 | <i>0.375</i> | N/A | N/A | 12.7 | <i>0.500</i> | 57.2 | <i>2.250</i> |
| TSK-508095-10-9 | 5,000 | 1 | 50.8 | <i>2.000</i> | 12.7 | <i>0.500</i> | N/A | N/A | 15.9 | <i>0.625</i> | 56.9 | <i>2.240</i> |
| TSK-508127-5-9 | 5,000 | 1 | 50.8 | <i>2.000</i> | 12.7 | <i>0.500</i> | N/A | N/A | 15.9 | <i>0.625</i> | 56.9 | <i>2.240</i> |

* NOTE: Kapton®/polyimide labels not compatible with T200 Printers

KTT Tan Kapton® labels

Ordering information



Product dimensions

| Product order code | Package quantity | Labels across | Label width (A) | | Label height (B) | | Horizontal repeat (C) | | Vertical repeat (D) | | Web width (E) | |
|--------------------|------------------|---------------|-----------------|---------------|------------------|---------------|-----------------------|---------------|---------------------|---------------|---------------|---------------|
| | | | mm | <i>inches</i> | mm | <i>inches</i> | mm | <i>inches</i> | mm | <i>inches</i> | mm | <i>inches</i> |
| KTT-044033-10-1A | 10,000 | 20 | 4.4 | <i>0.170</i> | 3.3 | <i>0.130</i> | 4.4 | <i>0.170</i> | 9.5 | <i>0.375</i> | 92.4 | <i>3.636</i> |
| KTT-064064-25-1A | 25,000 | 12 | 6.4 | <i>0.250</i> | 6.4 | <i>0.250</i> | 6.4 | <i>0.250</i> | 9.5 | <i>0.375</i> | 82.2 | <i>3.240</i> |
| *KTT-080080-10-1A | 10,000 | 8 | 8.0 | <i>0.315</i> | 8.0 | <i>0.315</i> | 9.9 | <i>0.390</i> | 13.3 | <i>0.525</i> | 83.3 | <i>3.280</i> |
| KTT-095080-25-1A | 25,000 | 5 | 9.5 | <i>0.375</i> | 8.0 | <i>0.315</i> | 12.2 | <i>0.480</i> | 12.7 | <i>0.500</i> | 64.3 | <i>2.531</i> |
| KTT-095095-10-1A | 10,000 | 7 | 9.5 | <i>0.375</i> | 9.5 | <i>0.375</i> | 11.1 | <i>0.437</i> | 12.7 | <i>0.500</i> | 82.1 | <i>3.230</i> |
| KTT-127032-10-1A | 10,000 | 5 | 12.7 | <i>0.500</i> | 3.2 | <i>0.125</i> | 19.1 | <i>0.750</i> | 3.2 | <i>0.250</i> | 94.9 | <i>3.736</i> |
| KTT-127111-10-1A | 10,000 | 5 | 12.7 | <i>0.500</i> | 11.1 | <i>0.437</i> | 16.8 | <i>0.662</i> | 14.3 | <i>0.563</i> | 86.0 | <i>3.380</i> |
| KTT-127127-10-1A | 10,000 | 5 | 12.7 | <i>0.500</i> | 12.7 | <i>0.500</i> | 15.9 | <i>0.625</i> | 15.9 | <i>0.625</i> | 82.6 | <i>3.250</i> |
| *KTT-165051-25-1A | 25,000 | 4 | 16.5 | <i>0.650</i> | 5.1 | <i>0.200</i> | 17.8 | <i>0.700</i> | 8.3 | <i>0.325</i> | 75.8 | <i>2.990</i> |
| KTT-171171-10-1A | 10,000 | 5 | 17.1 | <i>0.674</i> | 17.1 | <i>0.674</i> | 19.7 | <i>0.774</i> | 20.3 | <i>0.800</i> | 101.8 | <i>4.006</i> |
| *KTT-178095-10-1A | 10,000 | 4 | 17.8 | <i>0.700</i> | 9.5 | <i>0.375</i> | 19.1 | <i>0.750</i> | 12.7 | <i>0.500</i> | 80.9 | <i>3.190</i> |
| *KTT-191064-10-1A | 10,000 | 4 | 19.1 | <i>0.750</i> | 6.4 | <i>0.250</i> | 21.6 | <i>0.850</i> | 9.5 | <i>0.375</i> | 89.9 | <i>3.540</i> |
| KTT-229064-10-1A | 10,000 | 3 | 22.9 | <i>0.900</i> | 6.4 | <i>0.250</i> | 28.6 | <i>1.125</i> | 9.5 | <i>0.375</i> | 86.0 | <i>3.390</i> |
| KTT-254045-10-1A | 10,000 | 3 | 25.4 | <i>1.000</i> | 4.6 | <i>0.180</i> | 31.8 | <i>1.250</i> | 8.5 | <i>0.333</i> | 95.3 | <i>3.750</i> |
| KTT-254064-10-1A | 10,000 | 3 | 25.4 | <i>1.000</i> | 6.4 | <i>0.250</i> | 27.9 | <i>1.100</i> | 9.5 | <i>0.375</i> | 87.3 | <i>3.436</i> |
| KTT-254097-10-1A | 10,000 | 3 | 25.4 | <i>1.000</i> | 9.7 | <i>0.380</i> | 27.9 | <i>1.100</i> | 12.7 | <i>0.500</i> | 87.4 | <i>3.440</i> |
| KTT-254127-10-1A | 10,000 | 3 | 25.4 | <i>1.000</i> | 12.7 | <i>0.500</i> | 27.9 | <i>1.100</i> | 16.9 | <i>0.666</i> | 87.4 | <i>3.440</i> |
| KTT-254254-10-1A | 10,000 | 3 | 25.4 | <i>1.000</i> | 25.4 | <i>1.000</i> | 27.9 | <i>1.100</i> | 28.6 | <i>1.125</i> | 87.4 | <i>3.440</i> |
| *KTT-305047-10-1A | 10,000 | 2 | 30.5 | <i>1.200</i> | 4.7 | <i>0.185</i> | 33.0 | <i>1.300</i> | 7.8 | <i>0.306</i> | 69.5 | <i>2.736</i> |
| KTT-318064-10-1A | 10,000 | 1 | 31.8 | <i>1.250</i> | 6.4 | <i>0.250</i> | N/A | N/A | 9.5 | <i>0.375</i> | 37.9 | <i>1.490</i> |
| KTT-381020-10-1A | 10,000 | 1 | 38.1 | <i>1.500</i> | 2.0 | <i>0.080</i> | N/A | N/A | 10.7 | <i>0.423</i> | 44.1 | <i>1.740</i> |
| KTT-381064-10-1A | 10,000 | 1 | 38.1 | <i>1.500</i> | 6.4 | <i>0.250</i> | N/A | N/A | 9.5 | <i>0.375</i> | 44.5 | <i>1.750</i> |
| *KTT-381127-5-1A | 5,000 | 2 | 38.1 | <i>1.500</i> | 12.7 | <i>0.500</i> | 44.2 | <i>1.738</i> | 15.9 | <i>0.625</i> | 88.2 | <i>3.472</i> |
| KTT-381381-2.5-1A | 2,500 | 2 | 38.1 | <i>1.500</i> | 38.1 | <i>1.500</i> | 44.5 | <i>1.750</i> | 40.8 | <i>1.607</i> | 88.9 | <i>3.500</i> |
| KTT-445064-10-1A | 10,000 | 1 | 44.5 | <i>1.750</i> | 6.4 | <i>0.250</i> | N/A | N/A | 9.5 | <i>0.375</i> | 50.4 | <i>1.986</i> |
| KTT-445102-5-1A | 5,000 | 1 | 44.5 | <i>1.750</i> | 10.2 | <i>0.400</i> | N/A | N/A | 12.7 | <i>0.500</i> | 50.4 | <i>1.986</i> |
| KTT-508064-10-1A | 10,000 | 1 | 50.8 | <i>2.000</i> | 6.4 | <i>0.250</i> | N/A | N/A | 9.5 | <i>0.375</i> | 56.9 | <i>2.240</i> |
| KTT-508095-5-1A | 5,000 | 1 | 50.8 | <i>2.000</i> | 9.5 | <i>0.375</i> | N/A | N/A | 12.7 | <i>0.500</i> | 57.2 | <i>2.250</i> |
| KTT-508127-5-1A | 5,000 | 1 | 50.8 | <i>2.000</i> | 12.7 | <i>0.500</i> | N/A | N/A | 15.9 | <i>0.625</i> | 56.9 | <i>2.240</i> |

*NOTE: Kapton®/polyimide labels not compatible with T200 Printers

Engineering Notes



PVF Polyvinyl fluoride labels

Tyco Electronics PVF is a thermal transfer printable polyvinylfluoride (Tedlar®) film with a permanent acrylic adhesive, designed for wire and cable marking and other general labeling applications that require the “self-extinguishing” properties of Tedlar®. It is ideal in a variety of harsh physical and chemical environments; resists water, oil, cleaning agents and oil based solvents; and filters ultraviolet light. For reliable print performance and durability use with Tyco Electronics’s 1330-3300 ribbon.

Features and benefits

- Thermal transfer printable
- Ideal for wire and cable marking
- Self-extinguishing adhesive
- Resistant to a variety of solvents



| | |
|----------------------------|------------------------------------|
| Adhesive | Permanent acrylic |
| Service temperature | -53°C to +135°C -65°F to +275°F |
| Recommended printer | T308S* |
| Recommended ribbon | 1330-3300-10* |

*Alternative printers and ribbons are available for special applications. Contact Tyco Electronics Identification for more information.



Part numbering system



Ordering information



Product dimensions

| Product order code | Package quantity | Labels across | Label width (A) mm inches | Label height (B) mm inches | Horizontal repeat (C) mm inches | Vertical repeat (D) mm inches | Web width (E) mm inches |
|--------------------|------------------|---------------|---------------------------------|----------------------------------|---------------------------------------|-------------------------------------|-------------------------------|
| PVF-064064-25-9 | 25,000 | 12 | 6.4 0.250 | 6.4 0.250 | 6.4 0.250 | 9.5 0.375 | 82.2 3.240 |
| * PVF-080080-10-9 | 10,000 | 8 | 8.0 0.315 | 8.0 0.315 | 9.9 0.390 | 13.3 0.525 | 83.3 3.280 |
| PVF-095080-25-9 | 25,000 | 5 | 9.5 0.375 | 8.0 0.315 | 12.2 0.480 | 12.7 0.500 | 64.3 2.531 |
| PVF-095095-10-9 | 10,000 | 7 | 9.5 0.375 | 9.5 0.375 | 11.1 0.437 | 12.7 0.500 | 82.1 3.230 |

*** NOTE: Standard Format Not Compatible with T200 Printers**

Replace -9 suffix with -4 for yellow labels

PVF Polyvinyl fluoride labels

Product dimensions

| Product order code | Package quantity | Labels across | Label width (A) | | Label height (B) | | Horizontal repeat (C) | | Vertical repeat (D) | | Web width (E) | |
|--------------------|------------------|---------------|-----------------|---------------|------------------|---------------|-----------------------|---------------|---------------------|---------------|---------------|---------------|
| | | | mm | <i>inches</i> | mm | <i>inches</i> | mm | <i>inches</i> | mm | <i>inches</i> | mm | <i>inches</i> |
| PVF-127111-10-9 | 10,000 | 5 | 12.7 | <i>0.500</i> | 11.1 | <i>0.437</i> | 16.8 | <i>0.662</i> | 14.3 | <i>0.563</i> | 86.0 | <i>3.380</i> |
| PVF-127127-10-9 | 10,000 | 5 | 12.7 | <i>0.500</i> | 12.7 | <i>0.500</i> | 15.9 | <i>0.625</i> | 15.9 | <i>0.625</i> | 82.6 | <i>3.250</i> |
| * PVF-165051-25-9 | 25,000 | 4 | 16.5 | <i>0.650</i> | 5.1 | <i>0.200</i> | 17.8 | <i>0.700</i> | 8.3 | <i>0.325</i> | 75.8 | <i>2.990</i> |
| PVF-165102-10-9 | 10,000 | 5 | 16.5 | <i>0.650</i> | 10.2 | <i>0.400</i> | 19.1 | <i>0.750</i> | 13.8 | <i>0.545</i> | 99.1 | <i>3.900</i> |
| PVF-171171-10-9 | 10,000 | 5 | 17.1 | <i>0.674</i> | 17.1 | <i>0.674</i> | 19.7 | <i>0.774</i> | 20.3 | <i>0.800</i> | 101.8 | <i>4.006</i> |
| * PVF-178095-10-9 | 10,000 | 4 | 17.8 | <i>0.700</i> | 9.5 | <i>0.375</i> | 19.1 | <i>0.750</i> | 12.7 | <i>0.500</i> | 80.9 | <i>3.190</i> |
| * PVF-191064-10-9 | 10,000 | 4 | 19.1 | <i>0.750</i> | 6.4 | <i>0.250</i> | 21.6 | <i>0.850</i> | 9.5 | <i>0.375</i> | 89.9 | <i>3.540</i> |
| PVF-191114-15-9 | 15,000 | 3 | 19.1 | <i>0.750</i> | 11.4 | <i>0.450</i> | 22.2 | <i>0.875</i> | 14.7 | <i>0.579</i> | 69.5 | <i>2.736</i> |
| PVF-191762-5-9 | 5,000 | 3 | 19.1 | <i>0.750</i> | 76.2 | <i>3.000</i> | 21.6 | <i>0.850</i> | 88.9 | <i>3.500</i> | 68.2 | <i>2.686</i> |
| * PVF-203127-10-9 | 10,000 | 4 | 20.3 | <i>0.800</i> | 12.7 | <i>0.500</i> | 22.9 | <i>0.900</i> | 15.9 | <i>0.625</i> | 94.6 | <i>3.730</i> |
| PVF-229064-10-9 | 10,000 | 3 | 22.9 | <i>0.900</i> | 6.4 | <i>0.250</i> | 28.6 | <i>1.125</i> | 9.5 | <i>0.375</i> | 86.0 | <i>3.390</i> |
| * PVF-250381-10-9 | 10,000 | 4 | 24.9 | <i>0.980</i> | 38.1 | <i>1.500</i> | 27.4 | <i>1.080</i> | 47.6 | <i>1.875</i> | 113.5 | <i>4.470</i> |
| PVF-254045-10-9 | 10,000 | 3 | 25.4 | <i>1.000</i> | 4.6 | <i>0.180</i> | 31.8 | <i>1.250</i> | 8.5 | <i>0.333</i> | 95.3 | <i>3.750</i> |
| PVF-254064-10-9 | 10,000 | 3 | 25.4 | <i>1.000</i> | 6.4 | <i>0.250</i> | 27.9 | <i>1.100</i> | 9.5 | <i>0.375</i> | 87.3 | <i>3.436</i> |
| PVF-254097-10-9 | 10,000 | 3 | 25.4 | <i>1.000</i> | 9.7 | <i>0.380</i> | 27.9 | <i>1.100</i> | 12.7 | <i>0.500</i> | 87.4 | <i>3.440</i> |
| PVF-254127-10-9 | 10,000 | 3 | 25.4 | <i>1.000</i> | 12.7 | <i>0.500</i> | 27.9 | <i>1.100</i> | 16.9 | <i>0.666</i> | 87.4 | <i>3.440</i> |
| PVF-254254-10-9 | 10,000 | 3 | 25.4 | <i>1.000</i> | 25.4 | <i>1.000</i> | 27.9 | <i>1.100</i> | 28.6 | <i>1.125</i> | 87.4 | <i>3.440</i> |
| * PVF-305047-10-9 | 10,000 | 2 | 30.5 | <i>1.200</i> | 4.7 | <i>0.185</i> | 33.0 | <i>1.300</i> | 7.8 | <i>0.306</i> | 69.5 | <i>2.736</i> |
| PVF-318064-10-9 | 10,000 | 1 | 31.8 | <i>1.250</i> | 6.4 | <i>0.250</i> | N/A | N/A | 9.5 | <i>0.375</i> | 37.9 | <i>1.490</i> |
| PVF-318097-10-9 | 10,000 | 1 | 31.8 | <i>1.250</i> | 9.7 | <i>0.380</i> | N/A | N/A | 12.7 | <i>0.500</i> | 37.8 | <i>1.488</i> |
| PVF-381064-10-9 | 10,000 | 1 | 38.1 | <i>1.500</i> | 6.4 | <i>0.250</i> | N/A | N/A | 9.5 | <i>0.375</i> | 44.5 | <i>1.750</i> |
| * PVF-381127-5-9 | 5,000 | 2 | 38.1 | <i>1.500</i> | 12.7 | <i>0.500</i> | 44.2 | <i>1.738</i> | 15.9 | <i>0.625</i> | 88.2 | <i>3.472</i> |
| PVF-381191-5-9 | 5,000 | 2 | 38.1 | <i>1.500</i> | 19.1 | <i>0.750</i> | 43.2 | <i>1.700</i> | 22.2 | <i>0.875</i> | 87.6 | <i>3.450</i> |
| * PVF-381381-2.5-9 | 2,500 | 2 | 38.1 | <i>1.500</i> | 38.1 | <i>1.500</i> | 44.5 | <i>1.750</i> | 40.8 | <i>1.607</i> | 88.9 | <i>3.500</i> |
| * PVF-381635-5-9 | 5,000 | 2 | 38.1 | <i>1.500</i> | 63.5 | <i>2.500</i> | 40.6 | <i>1.600</i> | 66.7 | <i>2.625</i> | 84.7 | <i>3.336</i> |
| * PVF-406254-1.5-9 | 1,500 | 2 | 40.6 | <i>1.600</i> | 25.4 | <i>1.000</i> | 55.9 | <i>2.200</i> | 38.1 | <i>1.500</i> | 102.9 | <i>4.050</i> |
| PVF-445064-10-9 | 10,000 | 1 | 44.5 | <i>1.750</i> | 6.4 | <i>0.250</i> | N/A | N/A | 9.5 | <i>0.375</i> | 50.4 | <i>1.986</i> |
| PVF-445102-5-9 | 5,000 | 1 | 44.5 | <i>1.750</i> | 10.2 | <i>0.400</i> | N/A | N/A | 12.7 | <i>0.500</i> | 50.4 | <i>1.986</i> |
| PVF-445445-2-9 | 2,000 | 1 | 44.5 | <i>1.750</i> | 44.5 | <i>1.750</i> | N/A | N/A | 47.6 | <i>1.875</i> | 50.4 | <i>1.986</i> |
| PVF-478175-5-9 | 5,000 | 1 | 47.8 | <i>1.880</i> | 17.5 | <i>0.690</i> | N/A | N/A | 24.4 | <i>0.962</i> | 66.0 | <i>2.600</i> |
| PVF-508064-10-9 | 10,000 | 1 | 50.8 | <i>2.000</i> | 6.4 | <i>0.250</i> | N/A | N/A | 9.5 | <i>0.375</i> | 56.9 | <i>2.240</i> |
| PVF-508095-5-9 | 5,000 | 1 | 50.8 | <i>2.000</i> | 9.5 | <i>0.375</i> | N/A | N/A | 12.7 | <i>0.500</i> | 57.2 | <i>2.250</i> |
| PVF-508127-5-9 | 5,000 | 1 | 50.8 | <i>2.000</i> | 12.7 | <i>0.500</i> | N/A | N/A | 15.9 | <i>0.625</i> | 56.9 | <i>2.240</i> |
| PVF-508254-5-9 | 5,000 | 1 | 50.8 | <i>2.000</i> | 25.4 | <i>1.000</i> | N/A | N/A | 28.6 | <i>1.125</i> | 57.2 | <i>2.250</i> |
| PVF-508318-2.5-9 | 2,500 | 1 | 50.8 | <i>2.000</i> | 31.8 | <i>1.250</i> | N/A | N/A | 34.9 | <i>1.375</i> | 56.9 | <i>2.240</i> |
| PVF-508508-3-9 | 3,000 | 1 | 50.8 | <i>2.000</i> | 50.8 | <i>2.000</i> | N/A | N/A | 54.6 | <i>2.150</i> | 54.0 | <i>2.130</i> |
| PVF-523841-1.5-9 | 1,500 | 1 | 52.3 | <i>2.060</i> | 84.1 | <i>3.310</i> | N/A | N/A | 88.9 | <i>3.500</i> | 58.2 | <i>2.290</i> |
| PVF-610419-2.5-9 | 2,500 | 1 | 61.0 | <i>2.400</i> | 41.9 | <i>1.650</i> | N/A | N/A | 45.5 | <i>1.792</i> | 67.3 | <i>2.650</i> |
| PVF-699191-5-9 | 5,000 | 1 | 69.9 | <i>2.750</i> | 19.1 | <i>0.750</i> | N/A | N/A | 23.3 | <i>0.917</i> | 76.2 | <i>3.000</i> |
| PVF-699254-5-9 | 5,000 | 1 | 69.9 | <i>2.750</i> | 25.4 | <i>1.000</i> | N/A | N/A | 28.6 | <i>1.125</i> | 76.2 | <i>3.000</i> |
| PVF-762381-2.5-9 | 2,500 | 1 | 76.2 | <i>3.000</i> | 38.1 | <i>1.500</i> | N/A | N/A | 41.3 | <i>1.625</i> | 82.3 | <i>3.240</i> |
| PVF-762508-2.5-9 | 2,500 | 1 | 76.2 | <i>3.000</i> | 50.8 | <i>2.000</i> | N/A | N/A | 54.0 | <i>2.125</i> | 82.6 | <i>3.240</i> |
| PVF-762127-1-9 | 1,000 | 1 | 76.2 | <i>3.000</i> | 127.0 | <i>5.000</i> | N/A | N/A | 129.5 | <i>5.100</i> | 79.4 | <i>3.130</i> |
| PVF-101508-2.5-9 | 2,500 | 1 | 101.6 | <i>4.000</i> | 50.8 | <i>2.000</i> | N/A | N/A | 54.6 | <i>2.150</i> | 104.1 | <i>4.100</i> |
| PVF-101635-2.5-9 | 2,500 | 1 | 101.6 | <i>4.000</i> | 63.5 | <i>2.500</i> | N/A | N/A | 66.7 | <i>2.625</i> | 107.7 | <i>4.240</i> |
| PVF-101762-1.8-9 | 1,800 | 1 | 101.6 | <i>4.000</i> | 76.2 | <i>3.000</i> | N/A | N/A | 79.4 | <i>3.125</i> | 104.1 | <i>4.100</i> |
| PVF-101101-1.3-9 | 1,300 | 1 | 101.6 | <i>4.000</i> | 101.6 | <i>4.000</i> | N/A | N/A | 104.8 | <i>4.125</i> | 104.1 | <i>4.100</i> |
| PVF-101165-0.85-9 | 850 | 1 | 101.6 | <i>4.000</i> | 165.1 | <i>6.500</i> | N/A | N/A | 168.3 | <i>6.680</i> | 104.9 | <i>4.130</i> |

* NOTE: Standard Format Not Compatible with T200 Printers

Replace -9 suffix with -4 for yellow labels

EP Economy paper labels

Tyco Electronics EP is a thermal transfer printable paper with a permanent adhesive, designed for use in general purpose labeling applications requiring a low cost label material. EP has an aggressive adhesive for bonding to corrugated, films and plastic materials, and it is ideal for labeling in mild environments. The ultra-smooth finish is excellent for bar coding applications. EP remains bonded permanently to most surfaces and typically results in label or substrate tear when removal is attempted. For reliable print performance use with Tyco Electronics 1330-0600 ribbon.

Features and benefits

- Thermal transfer printable
- Ultra-smooth coated facestock
- Versatile adhesive with excellent initial tack
- Several die-cut sizes available



Specifications/Approvals

Industry **UL MH17001 Group PGDQ2**

Adhesive Permanent rubber-based

Service temperature -53°C to +93°C -65°F to +200°F

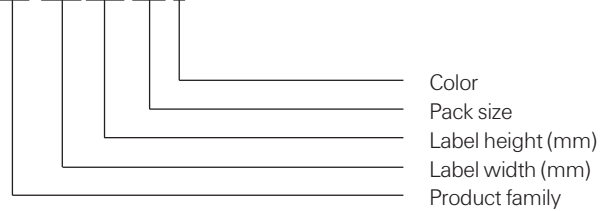
Recommended printer T308S*

Recommended ribbon 1330-0600-10*

**Alternative printers and ribbons are available for special applications. Contact Tyco Electronics Identification for more information.*

Part numbering system

EP 101 508 2.5 9



EP Economy paper labels

Ordering information



Product dimensions

| Product order code | Package quantity | Labels across | Label width (A) | | Label height (B) | | Horizontal repeat (C) | | Vertical repeat (D) | | Web width (E) | |
|--------------------|------------------|---------------|-----------------|---------------|------------------|---------------|-----------------------|---------------|---------------------|---------------|---------------|---------------|
| | | | mm | <i>inches</i> | mm | <i>inches</i> | mm | <i>inches</i> | mm | <i>inches</i> | mm | <i>inches</i> |
| * EP-191064-10-9 | 10,000 | 4 | 19.1 | <i>0.750</i> | 6.4 | <i>0.250</i> | 21.6 | <i>0.850</i> | 9.5 | <i>0.375</i> | 89.9 | <i>3.540</i> |
| EP-254097-10-9 | 10,000 | 3 | 25.4 | <i>1.000</i> | 9.7 | <i>0.380</i> | 27.9 | <i>1.100</i> | 12.7 | <i>0.500</i> | 87.4 | <i>3.440</i> |
| EP-254127-10-9 | 10,000 | 3 | 25.4 | <i>1.000</i> | 12.7 | <i>0.500</i> | 27.9 | <i>1.100</i> | 16.9 | <i>0.666</i> | 87.4 | <i>3.440</i> |
| EP-254254-10-9 | 10,000 | 3 | 25.4 | <i>1.000</i> | 25.4 | <i>1.000</i> | 27.9 | <i>1.100</i> | 28.6 | <i>1.125</i> | 87.4 | <i>3.440</i> |
| EP-318064-10-9 | 10,000 | 1 | 31.8 | <i>1.250</i> | 6.4 | <i>0.250</i> | N/A | <i>N/A</i> | 9.5 | <i>0.375</i> | 37.9 | <i>1.490</i> |
| EP-318097-10-9 | 10,000 | 1 | 31.8 | <i>1.250</i> | 9.7 | <i>0.380</i> | N/A | <i>N/A</i> | 12.7 | <i>0.500</i> | 37.8 | <i>1.488</i> |
| EP-381064-10-9 | 10,000 | 1 | 38.1 | <i>1.500</i> | 6.4 | <i>0.250</i> | N/A | <i>N/A</i> | 9.5 | <i>0.375</i> | 44.5 | <i>1.750</i> |
| * EP-381127-5-9 | 5,000 | 2 | 38.1 | <i>1.500</i> | 12.7 | <i>0.500</i> | 44.2 | <i>1.738</i> | 15.9 | <i>0.625</i> | 88.2 | <i>3.472</i> |
| EP-381191-5-9 | 5,000 | 2 | 38.1 | <i>1.500</i> | 19.1 | <i>0.750</i> | 43.2 | <i>1.700</i> | 22.2 | <i>0.875</i> | 87.6 | <i>3.450</i> |
| * EP-381381-2.5-9 | 2,500 | 2 | 38.1 | <i>1.500</i> | 38.1 | <i>1.500</i> | 44.5 | <i>1.750</i> | 40.8 | <i>1.607</i> | 88.9 | <i>3.500</i> |
| * EP-381635-5-9 | 5,000 | 2 | 38.1 | <i>1.500</i> | 63.5 | <i>2.500</i> | 40.6 | <i>1.600</i> | 66.7 | <i>2.625</i> | 84.7 | <i>3.336</i> |
| * EP-406254-1.5-9 | 1,500 | 2 | 40.6 | <i>1.600</i> | 25.4 | <i>1.000</i> | 55.9 | <i>2.200</i> | 38.1 | <i>1.500</i> | 102.9 | <i>4.050</i> |
| EP-445102-5-9 | 5,000 | 1 | 44.5 | <i>1.750</i> | 10.2 | <i>0.400</i> | N/A | <i>N/A</i> | 12.7 | <i>0.500</i> | 50.4 | <i>1.986</i> |
| EP-445445-2-9 | 2,000 | 1 | 44.5 | <i>1.750</i> | 44.5 | <i>1.750</i> | N/A | <i>N/A</i> | 47.6 | <i>1.875</i> | 50.4 | <i>1.986</i> |
| EP-508064-10-9 | 10,000 | 1 | 50.8 | <i>2.000</i> | 6.4 | <i>0.250</i> | N/A | <i>N/A</i> | 9.5 | <i>0.375</i> | 56.9 | <i>2.240</i> |
| EP-508095-5-9 | 5,000 | 1 | 50.8 | <i>2.000</i> | 9.5 | <i>0.375</i> | N/A | <i>N/A</i> | 12.7 | <i>0.500</i> | 57.2 | <i>2.250</i> |
| EP-508127-5-9 | 5,000 | 1 | 50.8 | <i>2.000</i> | 12.7 | <i>0.500</i> | N/A | <i>N/A</i> | 15.9 | <i>0.625</i> | 56.9 | <i>2.240</i> |
| EP-508254-5-9 | 5,000 | 1 | 50.8 | <i>2.000</i> | 25.4 | <i>1.000</i> | N/A | <i>N/A</i> | 28.6 | <i>1.125</i> | 57.2 | <i>2.250</i> |
| EP-508318-2.5-9 | 2,500 | 1 | 50.8 | <i>2.000</i> | 31.8 | <i>1.250</i> | N/A | <i>N/A</i> | 34.9 | <i>1.375</i> | 56.9 | <i>2.240</i> |
| EP-508508-3-9 | 3,000 | 1 | 50.8 | <i>2.000</i> | 50.8 | <i>2.000</i> | N/A | <i>N/A</i> | 54.6 | <i>2.150</i> | 54.0 | <i>2.130</i> |
| EP-523841-1.5-9 | 1,500 | 1 | 52.3 | <i>2.060</i> | 84.1 | <i>3.310</i> | N/A | <i>N/A</i> | 88.9 | <i>3.500</i> | 58.2 | <i>2.290</i> |
| EP-610419-2.5-9 | 2,500 | 1 | 61.0 | <i>2.400</i> | 41.9 | <i>1.650</i> | N/A | <i>N/A</i> | 45.5 | <i>1.792</i> | 67.3 | <i>2.650</i> |
| EP-699191-5-9 | 5,000 | 1 | 69.9 | <i>2.750</i> | 19.1 | <i>0.750</i> | N/A | <i>N/A</i> | 23.3 | <i>0.917</i> | 76.2 | <i>3.000</i> |
| EP-699254-5-9 | 5,000 | 1 | 69.9 | <i>2.750</i> | 25.4 | <i>1.000</i> | N/A | <i>N/A</i> | 28.6 | <i>1.125</i> | 76.2 | <i>3.000</i> |
| EP-762381-2.5-9 | 2,500 | 1 | 76.2 | <i>3.000</i> | 38.1 | <i>1.500</i> | N/A | <i>N/A</i> | 41.3 | <i>1.625</i> | 82.3 | <i>3.240</i> |
| EP-762508-2.5-9 | 2,500 | 1 | 76.2 | <i>3.000</i> | 50.8 | <i>2.000</i> | N/A | <i>N/A</i> | 54.0 | <i>2.125</i> | 82.6 | <i>3.240</i> |
| EP-762127-1-9 | 1,000 | 1 | 76.2 | <i>3.000</i> | 127.0 | <i>5.000</i> | N/A | <i>N/A</i> | 129.5 | <i>5.100</i> | 79.4 | <i>3.130</i> |
| EP-762254-5-9 | 5,000 | 1 | 76.2 | <i>3.000</i> | 25.4 | <i>1.000</i> | N/A | <i>N/A</i> | 28.6 | <i>1.125</i> | 82.3 | <i>3.240</i> |
| EP-101508-2.5-9 | 2,500 | 1 | 101.6 | <i>4.000</i> | 50.8 | <i>2.000</i> | N/A | <i>N/A</i> | 54.6 | <i>2.150</i> | 104.1 | <i>4.100</i> |
| EP-101635-2.5-9 | 2,500 | 1 | 101.6 | <i>4.000</i> | 63.5 | <i>2.500</i> | N/A | <i>N/A</i> | 66.7 | <i>2.625</i> | 107.7 | <i>4.240</i> |
| EP-101762-1.8-9 | 1,800 | 1 | 101.6 | <i>4.000</i> | 76.2 | <i>3.000</i> | N/A | <i>N/A</i> | 79.4 | <i>3.125</i> | 104.1 | <i>4.100</i> |
| EP-101101-1.3-9 | 1,300 | 1 | 101.6 | <i>4.000</i> | 101.6 | <i>4.000</i> | N/A | <i>N/A</i> | 104.8 | <i>4.125</i> | 104.1 | <i>4.100</i> |
| EP-101165-0.85-9 | 850 | 1 | 101.6 | <i>4.000</i> | 165.1 | <i>6.500</i> | N/A | <i>N/A</i> | 168.3 | <i>6.680</i> | 104.9 | <i>4.130</i> |

* NOTE: Standard Format Not Compatible with T200 Printers

VF Clear Tedlar® overlamine

VF-X is a non-printable clear Tedlar® designed for use as an over laminate for labels where resistance to UV light and weathering is necessary. Adds further protection from chemicals, solvents, abrasion, heat and moisture.

Features and benefits

- UV and weather resistant
- Ideal to use as an overlamine in combination with all printable Tyco Electronics labels
- Resistant to water, oil, cleaning agents and solvents



| | |
|---------------------------------|------------------------------------|
| Specifications/Approvals | |
| Tyco Electronics | TTDS-006 |
| Adhesive | Permanent rubber-based |
| Service temperature | -53°C to +135°C -65°F to +275°F |



Part numbering system



VF Clear Tedlar® overlaminate

Ordering information



Product dimensions

| Product order code | Package quantity | Labels across | Label width (A) | | Label height (B) | | Horizontal repeat (C) | | Vertical repeat (D) | | Web width (E) | |
|--------------------|------------------|---------------|-----------------|---------------|------------------|---------------|-----------------------|---------------|---------------------|---------------|---------------|---------------|
| | | | mm | <i>inches</i> | mm | <i>inches</i> | mm | <i>inches</i> | mm | <i>inches</i> | mm | <i>inches</i> |
| VF-191064-10-X | 10,000 | 4 | 19.1 | 0.750 | 6.4 | 0.250 | 21.6 | 0.850 | 9.5 | 0.375 | 89.9 | 3.540 |
| VF-229064-10-X | 10,000 | 3 | 22.9 | 0.900 | 6.4 | 0.250 | 28.6 | 1.125 | 9.5 | 0.375 | 86.0 | 3.390 |
| VF-254097-10-X | 10,000 | 3 | 25.4 | 1.000 | 9.7 | 0.380 | 27.9 | 1.100 | 12.7 | 0.500 | 87.4 | 3.440 |
| VF-254127-10-X | 10,000 | 3 | 25.4 | 1.000 | 12.7 | 0.500 | 27.9 | 1.100 | 16.9 | 0.666 | 87.4 | 3.440 |
| VF-381064-10-X | 10,000 | 1 | 38.1 | 1.500 | 6.4 | 0.250 | N/A | N/A | 9.5 | 0.375 | 44.5 | 1.750 |
| VF-381127-5-X | 5,000 | 2 | 38.1 | 1.500 | 12.7 | 0.500 | 44.2 | 1.738 | 15.9 | 0.625 | 88.2 | 3.472 |
| VF-381191-5-X | 5,000 | 2 | 38.1 | 1.500 | 19.1 | 0.750 | 43.2 | 1.700 | 22.2 | 0.875 | 87.6 | 3.450 |
| VF-406254-1.5-X | 1,500 | 2 | 40.6 | 1.600 | 25.4 | 1.000 | 55.9 | 2.200 | 38.1 | 1.500 | 102.9 | 4.050 |
| VF-508127-5-X | 5,000 | 1 | 50.8 | 2.000 | 12.7 | 0.500 | N/A | N/A | 15.9 | 0.625 | 56.9 | 2.240 |
| VF-508254-5-X | 5,000 | 1 | 50.8 | 2.000 | 25.4 | 1.000 | N/A | N/A | 28.6 | 1.125 | 57.2 | 2.250 |
| VF-508318-2.5-X | 2,500 | 1 | 50.8 | 2.000 | 31.8 | 1.250 | N/A | N/A | 34.9 | 1.375 | 56.9 | 2.240 |
| VF-699254-5-X | 5,000 | 1 | 69.9 | 2.750 | 25.4 | 1.000 | N/A | N/A | 28.6 | 1.125" | 76.2 | 3.000 |
| VF-762254-5-X | 5,000 | 1 | 76.2 | 3.000 | 25.4 | 1.000 | N/A | N/A | 28.6 | 1.125" | 82.3 | 3.240 |
| VF-762508-2.5-X | 2,500 | 1 | 76.2 | 3.000 | 50.8 | 2.000 | N/A | N/A | 54.0 | 2.125 | 82.3 | 3.240 |
| VF-101635-2.5-X | 2,500 | 1 | 101.6 | 4.000 | 63.5 | 2.500 | N/A | N/A | 66.7 | 2.625 | 107.7 | 4.240 |

C Vinyl cloth labels

Tyco Electronics C labels are dot matrix printable vinyl coated cloth material with a permanent acrylic adhesive that is designed for application to irregular surfaces where conformability is required. It is ideal for permanent wire marking, or it can be flagged onto wires for temporary marking. C labels are also ideal for electronic component identification and other general purpose labeling applications. For reliable print performance and durability, use with Tyco Electronics's 1892BK01 ribbon.



Features and benefits

- Flexible, easily conforms to curved surfaces
- Dot matrix printable
- Several die-cut sizes available
- Excellent abrasion resistance
- Resistant to oil, water and several common fluids



Specifications/Approvals

| | | |
|----------------------------|-------------------|-----------------|
| Tyco Electronics | TTDS-053 | |
| Adhesive | Permanent acrylic | |
| Service temperature | -29°C to +80°C | -20°F to +176°F |
| Recommended printer | AM6310 | |
| Recommended ribbon | 1892BK01 | |

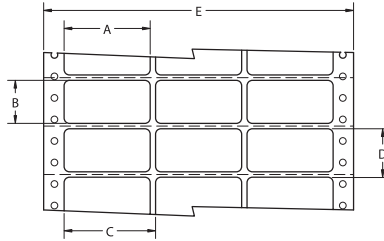
Part numbering system

C-064064-10-9



C Vinyl cloth labels

Ordering information



Product dimensions

| Product order code | Package quantity | Labels across | Label width (A) | | Label height (B) | | Horizontal repeat (C) | | Vertical repeat (D) | | Web width (E) | |
|--------------------|------------------|---------------|-----------------|---------------|------------------|---------------|-----------------------|---------------|---------------------|---------------|---------------|---------------|
| | | | mm | <i>inches</i> | mm | <i>inches</i> | mm | <i>inches</i> | mm | <i>inches</i> | mm | <i>inches</i> |
| C-064064-10-9 | 10,000 | 20 | 6.4 | <i>0.250</i> | 6.4 | <i>0.250</i> | 6.4 | <i>0.250</i> | 8.5 | <i>0.333</i> | 152.4 | <i>6.000</i> |
| C-076191-10-9 | 10,000 | 16 | 7.6 | <i>0.300</i> | 19.1 | <i>0.750</i> | 7.6 | <i>0.300</i> | 25.4 | <i>1.000</i> | 147.3 | <i>5.800</i> |
| C-080080-10-9 | 10,000 | 10 | 8.0 | <i>0.315</i> | 8.0 | <i>0.315</i> | 8.0 | <i>0.315</i> | 12.7 | <i>0.500</i> | 105.4 | <i>4.150</i> |
| C-095095-10-9 | 10,000 | 16 | 9.5 | <i>0.375</i> | 9.5 | <i>0.375</i> | 12.7 | <i>0.500</i> | 12.7 | <i>0.500</i> | 226.1 | <i>8.900</i> |
| C-165051-10-9 | 10,000 | 10 | 16.5 | <i>0.650</i> | 5.1 | <i>0.200</i> | 20.3 | <i>0.800</i> | 6.4 | <i>0.250</i> | 224.8 | <i>8.850</i> |
| C-191064-10-9 | 10,000 | 9 | 19.1 | <i>0.750</i> | 6.4 | <i>0.250</i> | 22.9 | <i>0.900</i> | 8.5 | <i>0.333</i> | 227.3 | <i>8.950</i> |
| C-203127-10-9 | 10,000 | 10 | 20.3 | <i>0.800</i> | 12.7 | <i>0.500</i> | 20.3 | <i>0.800</i> | 15.9 | <i>0.625</i> | 228.6 | <i>9.000</i> |
| C-203365-10-9 | 10,000 | 6 | 20.3 | <i>0.800</i> | 36.5 | <i>1.437</i> | 22.9 | <i>0.900</i> | 38.1 | <i>1.500</i> | 160.0 | <i>6.300</i> |
| C-229064-10-9 | 10,000 | 8 | 22.9 | <i>0.900</i> | 6.4 | <i>0.250</i> | 25.4 | <i>1.000</i> | 8.5 | <i>0.333</i> | 226.1 | <i>8.900</i> |
| C-254095-10-9 | 10,000 | 7 | 25.4 | <i>1.000</i> | 9.5 | <i>0.375</i> | 27.9 | <i>1.100</i> | 12.7 | <i>0.500</i> | 218.4 | <i>8.600</i> |
| C-254127-10-9 | 10,000 | 7 | 25.4 | <i>1.000</i> | 12.7 | <i>0.500</i> | 27.9 | <i>1.100</i> | 16.9 | <i>0.666</i> | 218.4 | <i>8.600</i> |
| C-381064-10-S1-9 | 10,000 | 4** | 38.1 | <i>1.500</i> | 6.4 | <i>0.250</i> | 45.7 | <i>1.800</i> | 8.5 | <i>0.333</i> | 200.7 | <i>7.900</i> |
| C-508095-5-9 | 5,000 | 3 | 50.8 | <i>2.000</i> | 9.5 | <i>0.375</i> | 53.3 | <i>2.100</i> | 12.7 | <i>0.500</i> | 182.9 | <i>7.200</i> |
| C-533064-5-9 | 5,000 | 3 | 53.3 | <i>2.100</i> | 6.4 | <i>0.250</i> | 55.9 | <i>2.200</i> | 8.5 | <i>0.333</i> | 190.5 | <i>7.500</i> |
| C-533114-5-9 | 5,000 | 3 | 53.3 | <i>2.100</i> | 11.4 | <i>0.450</i> | 55.9 | <i>2.200</i> | 14.7 | <i>0.579</i> | 190.5 | <i>7.500</i> |

**Perforated

M Metalized polyester labels

Tyco Electronics M is a dot matrix printable metalized polyester film with a permanent acrylic adhesive that is designed for rating plate applications and other applications that require a “metal look” such as nameplates, rating plates and equipment labels to detail product information and serial numbers. M is UL Listed and its print performance and durability are reliable when used with Tyco Electronics 1892BK01 ribbon.



Features and benefits

- Dot matrix printable
- Exceptional durability and strength
- Matte finish ink receptive coating for better contrast
- Resistant to oil, water and several common fluids
- UL Listed



Specifications/Approvals

| | |
|----------------------------|-----------------------------------|
| Tyco Electronics | TTDS-072 |
| Industry | UL MH17292 Group PGGU2MH14363 |
| Adhesive | Permanent acrylic |
| Service temperature | -53°C to +93°C -65°F to +200°F |
| Recommended printer | AM6310 |
| Recommended ribbon | 1892BK01 |

Part numbering system

M-064064-10-8A



M Metalized polyester labels

Ordering information



Product dimensions

| Product order code | Package quantity | Labels across | Label width (A) | | Label height (B) | | Horizontal repeat (C) | | Vertical repeat (D) | | Web width (E) | |
|--------------------|------------------|---------------|-----------------|---------------|------------------|---------------|-----------------------|---------------|---------------------|---------------|---------------|---------------|
| | | | mm | <i>inches</i> | mm | <i>inches</i> | mm | <i>inches</i> | mm | <i>inches</i> | mm | <i>inches</i> |
| M-064064-10-8A | 10,000 | 20 | 6.4 | <i>0.250</i> | 6.4 | <i>0.250</i> | 6.4 | <i>0.250</i> | 8.5 | <i>0.333</i> | 152.4 | <i>6.000</i> |
| M-080080-10-8A | 10,000 | 10 | 8.0 | <i>0.315</i> | 8.0 | <i>0.315</i> | 8.0 | <i>0.315</i> | 12.7 | <i>0.500</i> | 105.4 | <i>4.150</i> |
| M-095095-10-8A | 10,000 | 16 | 9.5 | <i>0.375</i> | 9.5 | <i>0.375</i> | 12.7 | <i>0.500</i> | 12.7 | <i>0.500</i> | 226.1 | <i>8.900</i> |
| M-127111-10-8A | 10,000 | 13 | 12.7 | <i>0.500</i> | 11.1 | <i>0.437</i> | 15.2 | <i>0.600</i> | 15.9 | <i>0.625</i> | 221.0 | <i>8.700</i> |
| M-154064-10-8A | 10,000 | 7 | 15.4 | <i>0.600</i> | 6.4 | <i>0.250</i> | 17.8 | <i>0.700</i> | 8.5 | <i>0.333</i> | 147.3 | <i>5.800</i> |
| M-165051-10-8A | 10,000 | 10 | 16.5 | <i>0.650</i> | 5.1 | <i>0.200</i> | 20.3 | <i>0.800</i> | 6.4 | <i>0.250</i> | 224.8 | <i>8.850</i> |
| M-191064-10-8A | 10,000 | 9 | 19.1 | <i>0.750</i> | 6.4 | <i>0.250</i> | 22.9 | <i>0.900</i> | 8.5 | <i>0.333</i> | 227.3 | <i>8.950</i> |
| M-203127-10-8A | 10,000 | 10 | 20.3 | <i>0.800</i> | 12.7 | <i>0.500</i> | 20.3 | <i>0.800</i> | 15.9 | <i>0.625</i> | 228.6 | <i>9.000</i> |
| M-229064-10-8A | 10,000 | 8 | 22.9 | <i>0.900</i> | 6.4 | <i>0.250</i> | 25.4 | <i>1.000</i> | 8.5 | <i>0.333</i> | 226.1 | <i>8.900</i> |
| M-254095-10-8A | 10,000 | 7 | 25.4 | <i>1.000</i> | 9.5 | <i>0.375</i> | 27.9 | <i>1.100</i> | 12.7 | <i>0.500</i> | 218.4 | <i>8.600</i> |
| M-254127-10-8A | 10,000 | 7 | 25.4 | <i>1.000</i> | 12.7 | <i>0.500</i> | 27.9 | <i>1.100</i> | 16.9 | <i>0.666</i> | 218.4 | <i>8.600</i> |
| M-293064-10-8A | 10,000 | 4 | 29.3 | <i>1.150</i> | 6.4 | <i>0.250</i> | 9.4 | <i>0.370</i> | 30.5 | <i>1.200</i> | 146.1 | <i>5.750</i> |
| M-381191-10-8A | 10,000 | 4 | 38.1 | <i>1.500</i> | 19.1 | <i>0.750</i> | 43.2 | <i>1.700</i> | 25.4 | <i>1.000</i> | 193.0 | <i>7.600</i> |
| M-394064-10-8A | 10,000 | 4 | 39.4 | <i>1.550</i> | 6.4 | <i>0.250</i> | 41.9 | <i>1.650</i> | 8.5 | <i>0.333</i> | 190.5 | <i>7.500</i> |
| M-508095-5-8A | 5,000 | 3 | 50.8 | <i>2.000</i> | 9.5 | <i>0.375</i> | 53.3 | <i>2.100</i> | 12.7 | <i>0.500</i> | 182.9 | <i>7.200</i> |
| M-508254-4-8A | 4,000 | 4 | 50.8 | <i>2.000</i> | 25.4 | <i>1.075</i> | 50.8 | <i>2.000</i> | 28.6 | <i>1.125</i> | 228.6 | <i>9.000</i> |
| M-508318-3-8A | 3,000 | 4 | 50.8 | <i>2.000</i> | 31.8 | <i>1.250</i> | 50.8 | <i>2.000</i> | 34.9 | <i>1.375</i> | 228.6 | <i>9.000</i> |
| M-533064-5-8A | 5,000 | 3 | 53.3 | <i>2.100</i> | 6.4 | <i>0.250</i> | 55.9 | <i>2.200</i> | 8.5 | <i>0.333</i> | 190.5 | <i>7.500</i> |
| M-673254-3-8A | 3,000 | 3 | 67.3 | <i>2.650</i> | 25.4 | <i>1.000</i> | 67.3 | <i>2.650</i> | 38.1 | <i>1.500</i> | 227.3 | <i>8.950</i> |
| M-673349-3-8A | 3,000 | 3 | 67.3 | <i>2.650</i> | 34.9 | <i>1.375</i> | 67.3 | <i>2.650</i> | 38.1 | <i>1.500</i> | 227.3 | <i>8.950</i> |
| M-699254-2.5-8A | 2,500 | 3 | 69.9 | <i>2.750</i> | 25.4 | <i>1.000</i> | 73.0 | <i>2.875</i> | 28.6 | <i>1.125</i> | 241.3 | <i>9.500</i> |
| M-699318-2.5-8A | 2,500 | 3 | 69.9 | <i>2.750</i> | 31.8 | <i>1.250</i> | 73.0 | <i>2.875</i> | 34.9 | <i>1.375</i> | 241.3 | <i>9.500</i> |
| M-711064-5-8A | 5,000 | 1 | 71.1 | <i>2.800</i> | 6.4 | <i>0.250</i> | N/A | N/A | 8.5 | <i>0.333</i> | 96.5 | <i>3.800</i> |
| M-762508-1-8A | 1,000 | 2 | 76.2 | <i>3.000</i> | 50.8 | <i>2.000</i> | 79.4 | <i>3.125</i> | 54.0 | <i>2.125</i> | 181.0 | <i>7.130</i> |
| M-920254-2.5-8A | 2,500 | 2 | 92.0 | <i>3.620</i> | 25.4 | <i>1.000</i> | 94.6 | <i>3.725</i> | 28.6 | <i>1.125</i> | 212.1 | <i>8.350</i> |
| M-920381-2.5-8A | 2,500 | 2 | 92.0 | <i>3.620</i> | 38.1 | <i>1.500</i> | 95.3 | <i>3.750</i> | 41.3 | <i>1.625</i> | 212.8 | <i>8.380</i> |
| M-165101-1-8A | 1,000 | 1 | 165.1 | <i>6.500</i> | 101.6 | <i>4.000</i> | N/A | N/A | 108.0 | <i>4.250</i> | 190.5 | <i>7.500</i> |

K Kapton® labels

Tyco Electronics K is a dot matrix printable, 2 mil thick tan polyimide (Kapton®) with a permanent acrylic adhesive that is ideal for high temperature labeling requirements such as printed circuit boards. It is suitable for direct wave (bottom side) and IR reflow (top side) PCB applications, and is designed to withstand the fluxes, cleaning solvents and molten solder encountered in the manufacture of printed circuit boards. With a flash exposure service temperature of +538°C (+1000°F), K is suitable for the harshest high temperature applications. For reliable print performance and durability, use with Tyco Electronics 1892BK01 ribbon.



Features and benefits

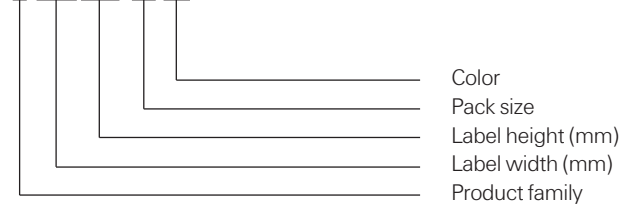
- Dot matrix printable
- Matte finish for better print contrast
- Product approved for aerospace/defense applications
- Exceptional durability and tear resistance
- High temperature permanent acrylic adhesive
- Superior solvent and UV resistance
- Low outgassing



| | |
|-----------------------------|---|
| Specifications | TTDS-007 |
| Adhesive | Permanent acrylic |
| Service temperature* | -40°C to +260°C -40°F to +500°F *Flash exposure to +538°C (+1000°F) |
| Recommended printer | AM6310 |
| Recommended ribbon | 1892BK01 |

Part numbering system

K-064064-10-1A



K Kapton® labels

Ordering information



Product dimensions

| Product order code | Package quantity | Labels across | Label width (A) | | Label height (B) | | Horizontal repeat (C) | | Vertical repeat (D) | | Web width (E) | |
|--------------------|------------------|---------------|-----------------|---------------|------------------|---------------|-----------------------|---------------|---------------------|---------------|---------------|---------------|
| | | | mm | <i>inches</i> | mm | <i>inches</i> | mm | <i>inches</i> | mm | <i>inches</i> | mm | <i>inches</i> |
| K-064064-10-1A | 10,000 | 20 | 6.4 | <i>0.250</i> | 6.4 | <i>0.250</i> | 6.4 | <i>0.250</i> | 8.5 | <i>0.333</i> | 152.4 | <i>6.000</i> |
| K-080080-10-1A | 10,000 | 10 | 8.0 | <i>0.315</i> | 8.0 | <i>0.315</i> | 8.0 | <i>0.315</i> | 12.7 | <i>0.500</i> | 105.4 | <i>4.150</i> |
| K-095095-10-1A | 10,000 | 16 | 9.5 | <i>0.375</i> | 9.5 | <i>0.375</i> | 12.7 | <i>0.500</i> | 12.7 | <i>0.500</i> | 226.1 | <i>8.900</i> |
| K-165051-10-1A | 10,000 | 10 | 16.5 | <i>0.650</i> | 5.1 | <i>0.200</i> | 20.3 | <i>0.800</i> | 6.4 | <i>0.250</i> | 224.8 | <i>8.850</i> |
| K-191064-10-1A | 10,000 | 9 | 19.1 | <i>0.750</i> | 6.4 | <i>0.250</i> | 22.9 | <i>0.900</i> | 8.5 | <i>0.333</i> | 227.3 | <i>8.950</i> |
| K-229064-10-1A | 10,000 | 8 | 22.9 | <i>0.900</i> | 6.4 | <i>0.250</i> | 25.4 | <i>1.000</i> | 8.5 | <i>0.333</i> | 226.1 | <i>8.900</i> |
| K-254095-10-1A | 10,000 | 7 | 25.4 | <i>1.000</i> | 9.5 | <i>0.375</i> | 27.9 | <i>1.100</i> | 12.7 | <i>0.500</i> | 218.4 | <i>8.600</i> |
| K-254127-10-1A | 10,000 | 7 | 25.4 | <i>1.000</i> | 12.7 | <i>0.500</i> | 27.9 | <i>1.100</i> | 16.9 | <i>0.666</i> | 218.4 | <i>8.600</i> |
| K-293064-10-1A | 10,000 | 4 | 29.3 | <i>1.150</i> | 6.4 | <i>0.250</i> | 9.4 | <i>0.370</i> | 30.5 | <i>1.200</i> | 146.1 | <i>5.750</i> |

E White polyester labels

Tyco Electronics E is a dot matrix printable white polyester film with a permanent acrylic adhesive that is ideal for PCB and component labeling, as well as general purpose labeling applications that require a high durability white label. It is resistant to a variety of solvents while maintaining print quality. E is UL Listed and its print performance and durability are reliable when used with Tyco Electronics 1892BK01 ribbon.



Features and benefits

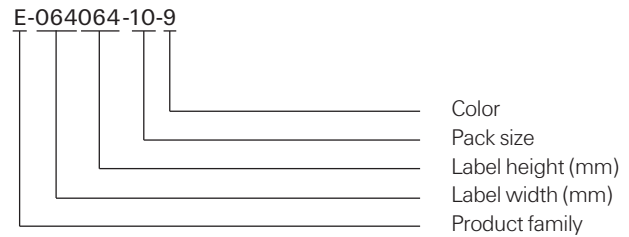
- Dot matrix printable
- Cost-efficient for general purpose, low volume applications
- Exceptional durability and strength
- Resistant to oil, water and several common fluids
- UL Listed



Specifications/Approvals

| | |
|----------------------------|-----------------------------------|
| Tyco Electronics | TTDS-071 |
| Industry | UL MH14363 Group PGGU2 |
| Adhesive | Permanent acrylic |
| Service temperature | -53°C to +93°C -65°F to +200°F |
| Recommended printer | AM6310 |
| Recommended ribbon | 1892BK01 |

Part numbering system



E White polyester labels

Ordering information



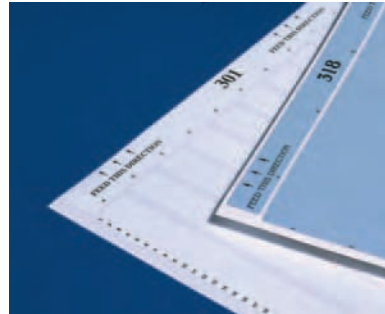
Product dimensions

| Product order code | Package quantity | Labels across | Label width (A) | | Label height (B) | | Horizontal repeat (C) | | Vertical repeat (D) | | Web width (E) | |
|--------------------|------------------|---------------|-----------------|---------------|------------------|---------------|-----------------------|---------------|---------------------|---------------|---------------|---------------|
| | | | mm | <i>inches</i> | mm | <i>inches</i> | mm | <i>inches</i> | mm | <i>inches</i> | mm | <i>inches</i> |
| E-064064-10-9 | 10,000 | 20 | 6.4 | <i>0.250</i> | 6.4 | <i>0.250</i> | 6.4 | <i>0.250</i> | 8.5 | <i>0.333</i> | 152.4 | <i>6.000</i> |
| E-080080-10-9 | 10,000 | 10 | 8.0 | <i>0.315</i> | 8.0 | <i>0.315</i> | 8.0 | <i>0.315</i> | 12.7 | <i>0.500</i> | 105.4 | <i>4.150</i> |
| E-095095-10-9 | 10,000 | 16 | 9.5 | <i>0.375</i> | 9.5 | <i>0.375</i> | 12.7 | <i>0.500</i> | 12.7 | <i>0.500</i> | 226.1 | <i>8.900</i> |
| E-127111-10-9 | 10,000 | 13 | 12.7 | <i>0.500</i> | 11.1 | <i>0.437</i> | 15.2 | <i>0.600</i> | 15.9 | <i>0.625</i> | 221 | <i>8.700</i> |
| E-154064-10-9 | 10,000 | 7 | 15.4 | <i>0.600</i> | 6.4 | <i>0.250</i> | 17.8 | <i>0.700</i> | 8.5 | <i>0.333</i> | 147.3 | <i>5.800</i> |
| E-165051-10-9 | 10,000 | 10 | 16.5 | <i>0.650</i> | 5.1 | <i>0.200</i> | 20.3 | <i>0.800</i> | 6.4 | <i>0.250</i> | 224.8 | <i>8.850</i> |
| E-191064-10-9 | 10,000 | 9 | 19.1 | <i>0.750</i> | 6.4 | <i>0.250</i> | 22.9 | <i>0.900</i> | 8.5 | <i>0.333</i> | 227.3 | <i>8.950</i> |
| E-203127-10-9 | 10,000 | 10 | 20.3 | <i>0.800</i> | 12.7 | <i>0.500</i> | 20.3 | <i>0.800</i> | 15.9 | <i>0.625</i> | 228.6 | <i>9.000</i> |
| E-229064-10-9 | 10,000 | 8 | 22.9 | <i>0.900</i> | 6.4 | <i>0.250</i> | 25.4 | <i>1.000</i> | 8.5 | <i>0.333</i> | 226.1 | <i>8.900</i> |
| E-254095-10-9 | 10,000 | 7 | 25.4 | <i>1.000</i> | 9.5 | <i>0.375</i> | 27.9 | <i>1.100</i> | 12.7 | <i>0.500</i> | 218.4 | <i>8.600</i> |
| E-254127-10-9 | 10,000 | 7 | 25.4 | <i>1.000</i> | 12.7 | <i>0.500</i> | 27.9 | <i>1.100</i> | 16.9 | <i>0.666</i> | 218.4 | <i>8.600</i> |
| E-293064-10-9 | 10,000 | 4 | 29.3 | <i>1.150</i> | 6.4 | <i>0.250</i> | 9.4 | <i>0.370</i> | 30.5 | <i>1.200</i> | 146.1 | <i>5.750</i> |
| E-381191-10-9 | 10,000 | 4 | 38.1 | <i>1.500</i> | 19.1 | <i>0.750</i> | 43.2 | <i>1.700</i> | 25.4 | <i>1.000</i> | 193.0 | <i>7.600</i> |
| E-394064-10-9 | 10,000 | 4 | 39.4 | <i>1.550</i> | 6.4 | <i>0.250</i> | 41.9 | <i>1.650</i> | 8.5 | <i>0.333</i> | 190.5 | <i>7.500</i> |
| E-508095-5-9 | 5,000 | 3 | 50.8 | <i>2.000</i> | 9.5 | <i>0.375</i> | 53.3 | <i>2.100</i> | 12.7 | <i>0.500</i> | 182.9 | <i>7.200</i> |
| E-508254-4-9 | 4,000 | 4 | 50.8 | <i>2.000</i> | 25.4 | <i>1.000</i> | 50.8 | <i>2.000</i> | 28.6 | <i>1.125</i> | 228.6 | <i>9.000</i> |
| E-508318-3-9 | 3,000 | 4 | 50.8 | <i>2.000</i> | 31.8 | <i>1.250</i> | 50.8 | <i>2.000</i> | 34.9 | <i>1.375</i> | 228.6 | <i>9.000</i> |
| E-533064-5-9 | 5,000 | 3 | 53.3 | <i>2.100</i> | 6.4 | <i>0.250</i> | 55.9 | <i>2.200</i> | 8.5 | <i>0.333</i> | 190.5 | <i>7.500</i> |
| E-673254-3-9 | 3,000 | 3 | 67.3 | <i>2.650</i> | 25.4 | <i>1.000</i> | 67.3 | <i>2.650</i> | 38.1 | <i>1.500</i> | 227.3 | <i>8.950</i> |
| E-673349-3-9 | 3,000 | 3 | 67.3 | <i>2.650</i> | 34.9 | <i>1.375</i> | 67.3 | <i>2.650</i> | 38.1 | <i>1.500</i> | 227.3 | <i>8.950</i> |
| E-699254-2.5-9 | 2,500 | 3 | 69.9 | <i>2.750</i> | 25.4 | <i>1.000</i> | 73.0 | <i>2.875</i> | 28.6 | <i>1.125</i> | 241.3 | <i>9.500</i> |
| E-699318-2.5-9 | 2,500 | 3 | 69.9 | <i>2.750</i> | 31.8 | <i>1.250</i> | 73.0 | <i>2.875</i> | 34.9 | <i>1.375</i> | 241.3 | <i>9.500</i> |
| E-711064-5-9 | 5,000 | 1 | 71.1 | <i>2.800</i> | 6.4 | <i>0.250</i> | N/A | N/A | 8.5 | <i>0.333</i> | 96.5 | <i>3.800</i> |
| E-762508-1-9 | 1,000 | 2 | 76.2 | <i>3.000</i> | 50.8 | <i>2.000</i> | 79.4 | <i>3.125</i> | 54.0 | <i>2.125</i> | 181.0 | <i>7.130</i> |
| E-920254-2.5-9 | 2,500 | 2 | 92.0 | <i>3.620</i> | 25.4 | <i>1.000</i> | 94.6 | <i>3.725</i> | 28.6 | <i>1.125</i> | 212.1 | <i>8.350</i> |
| E-920381-2.5-9 | 2,500 | 2 | 92.0 | <i>3.620</i> | 38.1 | <i>1.500</i> | 95.3 | <i>3.750</i> | 41.3 | <i>1.625</i> | 212.8 | <i>8.380</i> |
| E-165101-1-9 | 1,000 | 1 | 165.1 | <i>6.500</i> | 101.6 | <i>4.000</i> | N/A | N/A | 108.0 | <i>4.250</i> | 190.5 | <i>7.500</i> |

LE/LM/LEB2 Polyester labels

LE

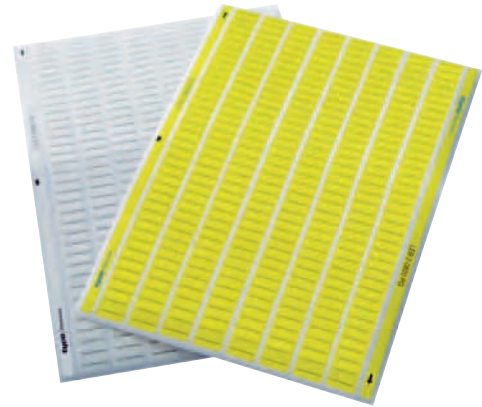
Tyco Electronics LE is a white polyester film with a permanent acrylic adhesive and a special top-coat designed specifically for use with laser and ink jet printers. It is ideal for bar coding, PCB and component labeling, and general labeling applications requiring a white high durability label. LE offers high print resolution as well as good solvent and smudge resistance.



LM

Tyco Electronics LM is a metalized polyester film with a permanent acrylic adhesive and a special top-coat designed specifically for use with laser and ink jet printers. It is ideal for rating plate applications and other applications that require a "metal look" such as nameplates and equipment labels to detail product information and serial numbers.

Note: On large label formats, some curl may occur on printing due to duration of time in the laser printer.



LEB2

LEB2, our A4 size symmetrically-designed laser and ink jet labels, guarantee a proper feeding in the paper tray. The label sheet can be used in both directions and is also usable for the stack function of your printer. The sheets can be used several times if partial label amounts need to be printed. Special surface coatings guarantee an extremely high aging-resistance of the printing image.

Features and benefits

- Laser printable
- Exceptional durability and tear strength
- Suitable for low volume applications
- Excellent for bar code applications
- Good resistance to common fluids and water
- LM metalized appearance is ideal for rating plate applications.
- LEB2 features symmetrical design – can be printed on from both top sides



Specifications/Approvals

| | | |
|------------------|----|---------------------|
| Tyco Electronics | LE | TTDS-069 |
| | LM | TTDS-070 |
| Industry | UL | MH14363 Group PGGU2 |

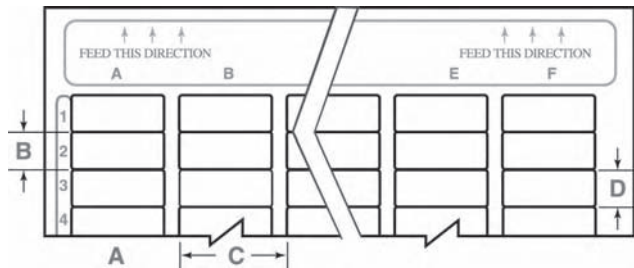
Adhesive

Permanent acrylic

Service temperature

-40°C to +150°C -40°F to +302°F

Ordering information



LE/LM/LEB2 Polyester labels

Ordering information

LE

| Product order code | Package quantity | Labels across | Labels per sheet | Label width (A) mm <i>inches</i> | Label height (B) mm <i>inches</i> | Horizontal repeat (C) mm <i>inches</i> | Vertical repeat (D) mm <i>inches</i> |
|--------------------|------------------|---------------|------------------|-------------------------------------|--------------------------------------|---|---|
| 314-LE | 4,000 | 16 | 400 | 9.5 <i>0.375</i> | 9.5 <i>0.375</i> | 12.7 <i>0.500</i> | 9.5 <i>0.375</i> |
| 301-LE | 4,800 | 10 | 480 | 16.5 <i>0.650</i> | 5.1 <i>0.200</i> | 20.3 <i>0.800</i> | 5.1 <i>0.200</i> |
| 303-LE | 3,040 | 8 | 304 | 20.3 <i>0.800</i> | 6.4 <i>0.250</i> | 25.4 <i>1.000</i> | 6.4 <i>0.250</i> |
| 304-LE | 1,520 | 8 | 152 | 20.3 <i>0.800</i> | 12.7 <i>0.500</i> | 25.4 <i>1.000</i> | 12.7 <i>0.500</i> |
| 309-LE | 2,660 | 7 | 266 | 25.4 <i>1.000</i> | 6.4 <i>0.250</i> | 27.9 <i>1.100</i> | 6.4 <i>0.250</i> |
| 305-LE | 1,750 | 7 | 175 | 25.4 <i>1.000</i> | 9.5 <i>0.375</i> | 27.9 <i>1.100</i> | 9.5 <i>0.375</i> |
| 307-LE | 1,330 | 7 | 133 | 25.4 <i>1.000</i> | 12.7 <i>0.500</i> | 27.9 <i>1.100</i> | 12.7 <i>0.500</i> |
| 310-LE | 1,900 | 5 | 190 | 38.1 <i>1.500</i> | 6.4 <i>0.250</i> | 40.6 <i>1.600</i> | 6.4 <i>0.250</i> |
| 308-LE | 600 | 5 | 60 | 38.1 <i>1.500</i> | 19.1 <i>0.750</i> | 40.6 <i>1.600</i> | 19.1 <i>0.750</i> |
| 318-LE | 400 | 4 | 40 | 50.8 <i>2.000</i> | 25.4 <i>1.000</i> | 50.8 <i>2.000</i> | 25.4 <i>1.000</i> |
| 319-LE | 100 | 2 | 10 | 76.2 <i>3.000</i> | 50.8 <i>2.000</i> | 88.9 <i>3.500</i> | 50.8 <i>2.000</i> |
| 325-LE | 10 | 1 | 1 | 215.9 <i>8.500</i> | 279.4 <i>11.000</i> | N/A N/A | N/A N/A |

LM

| Product order code | Package quantity | Labels across | Labels per sheet | Label width (A) mm <i>inches</i> | Label height (B) mm <i>inches</i> | Horizontal repeat (C) mm <i>inches</i> | Vertical repeat (D) mm <i>inches</i> |
|--------------------|------------------|---------------|------------------|-------------------------------------|--------------------------------------|---|---|
| 314-LM | 4,000 | 16 | 400 | 9.5 <i>0.375</i> | 9.5 <i>0.375</i> | 12.7 <i>0.500</i> | 9.5 <i>0.375</i> |
| 301-LM | 4,800 | 10 | 480 | 16.5 <i>0.650</i> | 5.1 <i>0.200</i> | 20.3 <i>0.800</i> | 5.1 <i>0.200</i> |
| 303-LM | 3,040 | 8 | 304 | 20.3 <i>0.800</i> | 6.4 <i>0.250</i> | 25.4 <i>1.000</i> | 6.4 <i>0.250</i> |
| 304-LM | 1,520 | 8 | 152 | 20.3 <i>0.800</i> | 12.7 <i>0.500</i> | 25.4 <i>1.000</i> | 12.7 <i>0.500</i> |
| 309-LM | 2,660 | 7 | 266 | 25.4 <i>1.000</i> | 6.4 <i>0.250</i> | 27.9 <i>1.100</i> | 6.4 <i>0.250</i> |
| 305-LM | 1,750 | 7 | 175 | 25.4 <i>1.000</i> | 9.5 <i>0.375</i> | 27.9 <i>1.100</i> | 9.5 <i>0.375</i> |
| 307-LM | 1,330 | 7 | 133 | 25.4 <i>1.000</i> | 12.7 <i>0.500</i> | 27.9 <i>1.100</i> | 12.7 <i>0.500</i> |
| 310-LM | 1,900 | 5 | 190 | 38.1 <i>1.500</i> | 6.4 <i>0.250</i> | 40.6 <i>1.600</i> | 6.4 <i>0.250</i> |
| 308-LM | 600 | 5 | 60 | 38.1 <i>1.500</i> | 19.1 <i>0.750</i> | 40.6 <i>1.600</i> | 19.1 <i>0.750</i> |
| 318-LM | 400 | 4 | 40 | 50.8 <i>2.000</i> | 25.4 <i>1.000</i> | 50.8 <i>2.000</i> | 25.4 <i>1.000</i> |
| 319-LM | 100 | 2 | 10 | 76.2 <i>3.000</i> | 50.8 <i>2.000</i> | 88.9 <i>3.500</i> | 50.8 <i>2.000</i> |
| 325-LM | 10 | 1 | 1 | 215.9 <i>8.500</i> | 279.4 <i>11.000</i> | N/A N/A | N/A N/A |

LEB2

| Product order code | Labels per sheet | Label height mm <i>inches</i> | Label width mm <i>inches</i> | Labels per column | Labels per row |
|--------------------|------------------|----------------------------------|---------------------------------|-------------------|----------------|
| LEB2-0615P <color> | 480 | 6.0 <i>0.236</i> | 15.0 <i>0.590</i> | 48 | 10 |
| LEB2-0818P <color> | 324 | 8.0 <i>0.315</i> | 18.0 <i>0.709</i> | 36 | 9 |
| LEB2-0820P <color> | 288 | 8.0 <i>0.315</i> | 20.0 <i>0.787</i> | 36 | 8 |
| LEB2-0825P <color> | 252 | 8.0 <i>0.315</i> | 25.0 <i>0.984</i> | 36 | 7 |
| LEB2-0916P <color> | 320 | 9.0 <i>0.354</i> | 16.0 <i>0.630</i> | 32 | 10 |
| LEB2-1318P <color> | 198 | 13.0 <i>0.512</i> | 18.0 <i>0.709</i> | 22 | 9 |
| LEB2-1325P <color> | 154 | 13.0 <i>0.512</i> | 25.0 <i>0.984</i> | 22 | 7 |

Sheet sizes

| | |
|--------|------------|
| LE, LM | 8.5" x 11" |
| LEB2 | A4 |

Options (LEB2 only)

| | | | |
|--------|--------|-------|--------|
| Colors | Yellow | White | Silver |
| Code | 4 | 9 | 8A |

Компания «Life Electronics» занимается поставками электронных компонентов импортного и отечественного производства от производителей и со складов крупных дистрибьюторов Европы, Америки и Азии.

С конца 2013 года компания активно расширяет линейку поставок компонентов по направлению коаксиальный кабель, кварцевые генераторы и конденсаторы (керамические, пленочные, электролитические), за счёт заключения дистрибьюторских договоров

Мы предлагаем:

- Конкурентоспособные цены и скидки постоянным клиентам.
- Специальные условия для постоянных клиентов.
- Подбор аналогов.
- Поставку компонентов в любых объемах, удовлетворяющих вашим потребностям.
- Приемлемые сроки поставки, возможна ускоренная поставка.
- Доставку товара в любую точку России и стран СНГ.
- Комплексную поставку.
- Работу по проектам и поставку образцов.
- Формирование склада под заказчика.
- Сертификаты соответствия на поставляемую продукцию (по желанию клиента).
- Тестирование поставляемой продукции.
- Поставку компонентов, требующих военную и космическую приемку.
- Входной контроль качества.
- Наличие сертификата ISO.

В составе нашей компании организован Конструкторский отдел, призванный помогать разработчикам, и инженерам.

Конструкторский отдел помогает осуществить:

- Регистрацию проекта у производителя компонентов.
- Техническую поддержку проекта.
- Защиту от снятия компонента с производства.
- Оценку стоимости проекта по компонентам.
- Изготовление тестовой платы монтаж и пусконаладочные работы.



Тел: +7 (812) 336 43 04 (многоканальный)

Email: org@lifeelectronics.ru