



Grove - Serial Camera Kit

Release date : 9/20/2015

Version : 1.0

Wiki: [http://www.seeedstudio.com/wiki/Grove - Serial Camera Kit](http://www.seeedstudio.com/wiki/Grove_-_Serial_Camera_Kit)

Bazaar: <http://www.seeedstudio.com/depot/Grove-SPDT-Relay30A-p-1473.html>

Document Revision History

Revision	Date	Author	Description
1.0	Sep 21, 2015	Victor.He	Create file

Contents

Document Revision History	2
1. Introduction	2
2. Specifications	3
3. Demonstration	4
3.1 Hardware Installation	4
3.2 Download Code and Upload	4
3.3 Take a Photo	4
3.4 Replacing a Lens	5
3.5 How to Focus	6
4. Resources	7

Disclaimer

For physical injuries and possessions loss caused by those reasons which are not related to product quality, such as operating without following manual guide, natural disasters or force majeure, we take no responsibility for that.

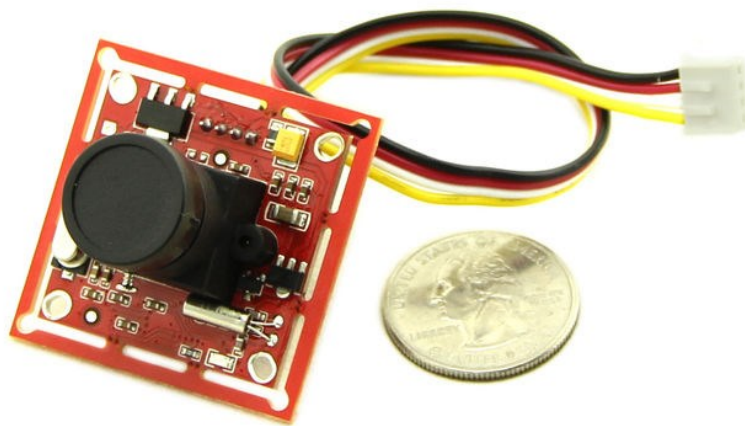
Under the supervision of Seeed Technology Inc., this manual has been compiled and published which covered the latest product description and specification. The content of this manual is subject to change without notice.

Copyright

The design of this product (including software) and its accessories is under tutelage of laws. Any action to violate relevant right of our product will be penalized through law. Please consciously observe relevant local laws in the use of this product.

1. Introduction

Grove - Serial Camera Kit includes one control board and two interchangeable lenses, one is standard lens and the other is wide-angle lens. It's a great camera for Arduino centered image recognition projects, because 30W pixel wouldn't be overwhelming for Arduino, so that real-time image recognition is possible. To make it more fun and playable, lenses of two specs are shipped in this kit. The standard one is for common photo shots and the wide-angle one is especially suitable for monitoring projects.



2. Specifications

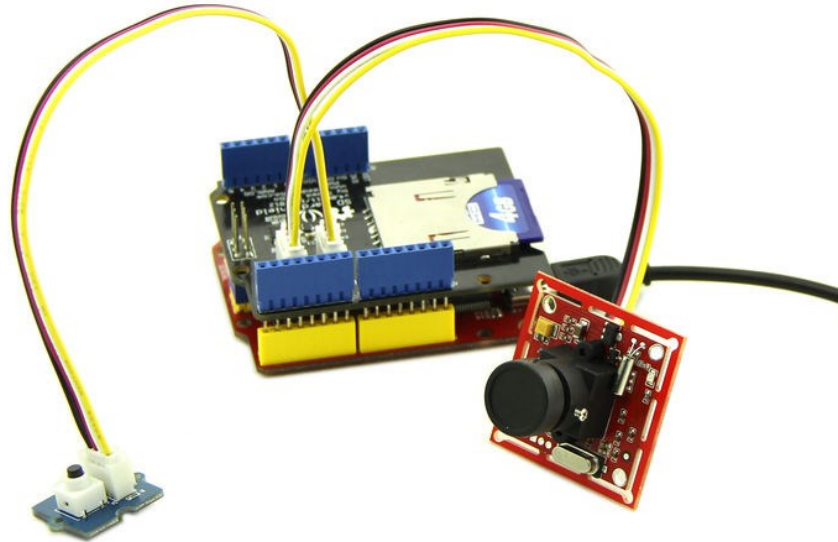
Input Voltage	5V
Pixel	300,000
Resolution	640*480, 320*240, 160*120
Uart Baud Rate	9600~115200
Communication	RS485 and RS232
Photo JPEG compression, high, medium and low grades Optional	
AGC	
Auto Exposure Event Control	
Automatic White Balance Control	
Focus adjustable	

3. Demonstration

This demo will show you how to use Grove - Serial Camera Kit. We need a [Seeeduino](#), an [SD Card Shield](#) and a [Grove - Button](#). When the button pressed, we take a photo and save it to SD Card. Follow the below steps step by step, you can easily run your Grove - Serial Camera Kit. Then let's go.

3.1 Hardware Installation

We can find that there are two Grove interfaces on SD Card Shield V4.0, so we needn't a Base Shield, just plug Button to I2C Grove and plug Camera to Uart Grove.



3.2 Download Code and Upload

You can download demo code in github, click [here](#)

Then upload the code, and it works.

3.3 Take a Photo

After finish uploading demo code, we can take a photo now, just press the button, then wait for a few seconds, a photo will be saved to SD card.

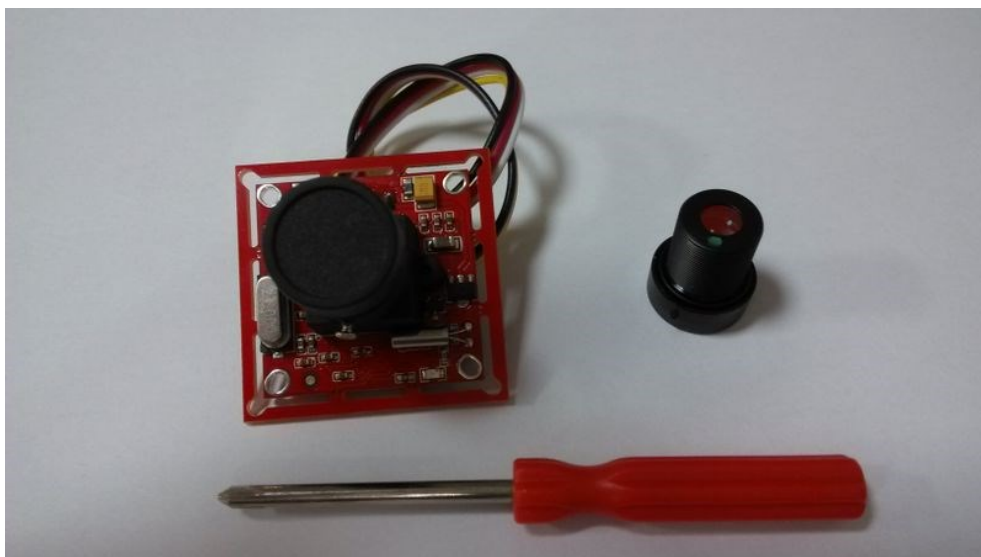
The following image is the ceiling of my office use straight angle lens.



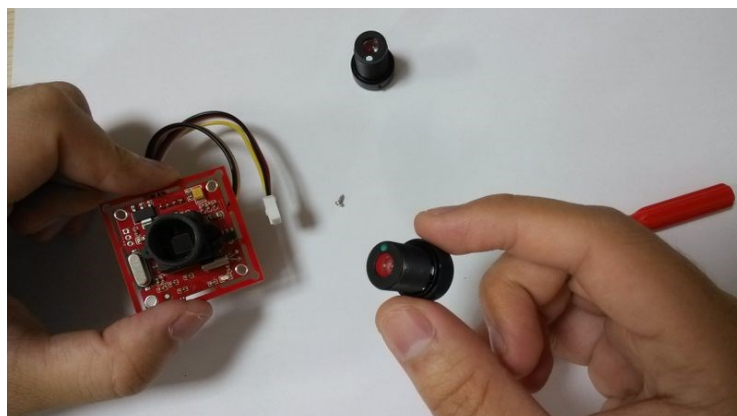
3.4 Replacing a Lens

There is another wide-angle lens, I will show you how to replace it.

Firstly you should have a screwdriver :



Then, unscrew the screws on the side of lens:



We use the wide-angle lens to take a photo, also, it's the ceiling of my office!

Find anything different from the ceiling image previous?



3.5 How to Focus

Lens screwed different depths represent different focal length, you can have a try.

4. Resources

[Demo Code](#)

Компания «Life Electronics» занимается поставками электронных компонентов импортного и отечественного производства от производителей и со складов крупных дистрибьюторов Европы, Америки и Азии.

С конца 2013 года компания активно расширяет линейку поставок компонентов по направлению коаксиальный кабель, кварцевые генераторы и конденсаторы (керамические, пленочные, электролитические), за счёт заключения дистрибьюторских договоров

Мы предлагаем:

- Конкурентоспособные цены и скидки постоянным клиентам.
- Специальные условия для постоянных клиентов.
- Подбор аналогов.
- Поставку компонентов в любых объемах, удовлетворяющих вашим потребностям.
- Приемлемые сроки поставки, возможна ускоренная поставка.
- Доставку товара в любую точку России и стран СНГ.
- Комплексную поставку.
- Работу по проектам и поставку образцов.
- Формирование склада под заказчика.
- Сертификаты соответствия на поставляемую продукцию (по желанию клиента).
- Тестирование поставляемой продукции.
- Поставку компонентов, требующих военную и космическую приемку.
- Входной контроль качества.
- Наличие сертификата ISO.

В составе нашей компании организован Конструкторский отдел, призванный помогать разработчикам, и инженерам.

Конструкторский отдел помогает осуществить:

- Регистрацию проекта у производителя компонентов.
- Техническую поддержку проекта.
- Защиту от снятия компонента с производства.
- Оценку стоимости проекта по компонентам.
- Изготовление тестовой платы монтаж и пусконаладочные работы.



Тел: +7 (812) 336 43 04 (многоканальный)

Email: org@lifeelectronics.ru