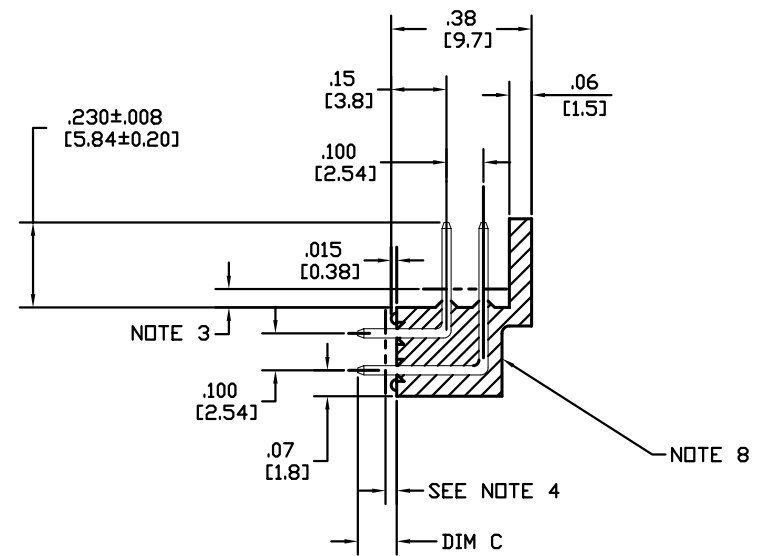
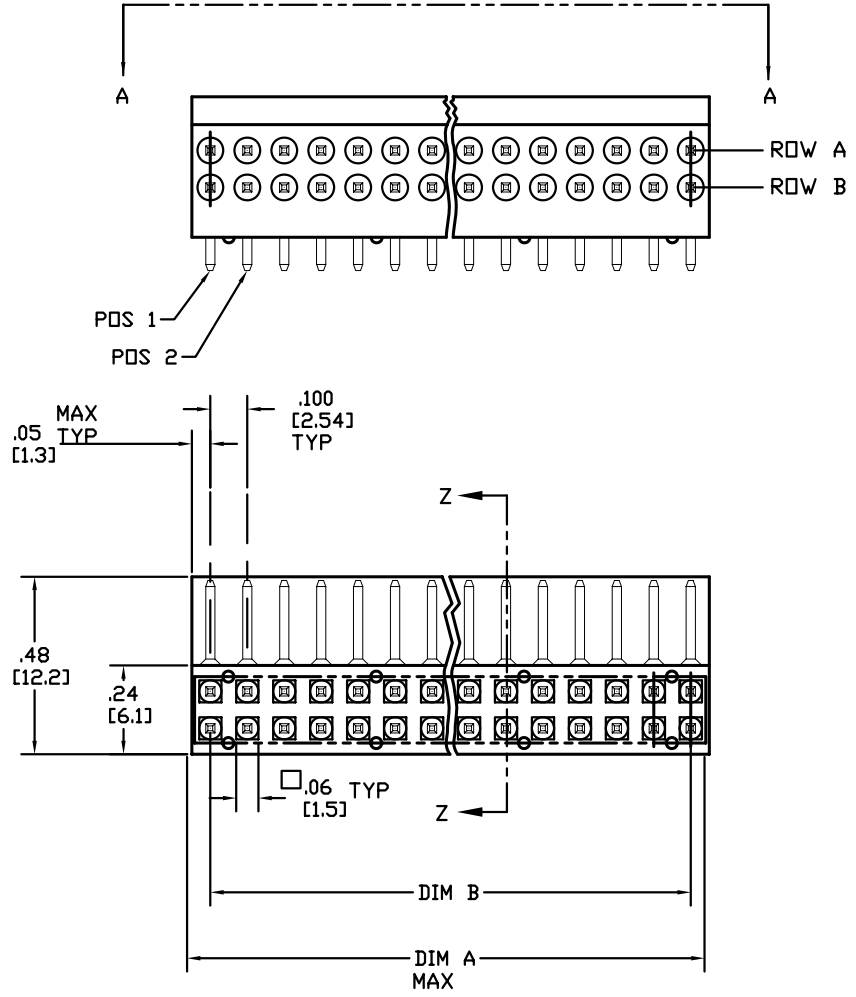


Tous droits strictement reserves. Reproduction ou communication a des tiers interdite sous quelque forme que ce soit sans autorisation ecrite du proprietaire. Propriete de c FCI. Droits de reproduction FCI.

All rights strictly reserved. Reproduction or issue to third parties in any form whatever is not permitted without written authority from the proprietor. Property of FCI. Copyright FCI.

PRODUCT NO.
SEE TABLE

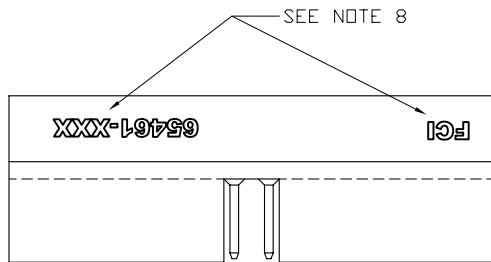
STYLE P
SHOWN THIS SHEET



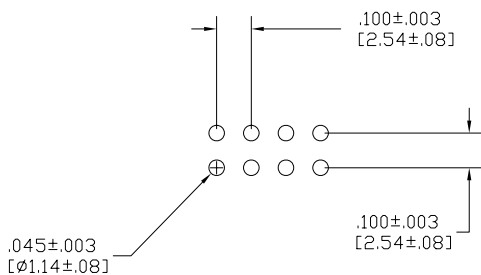
SECTION Z-Z

mat'l. code				tolerances unless otherwise specified				CUSTOMER COPY		FCI		www.fciconnect.com	
NOTE 1													
ltr	ecn no	dr	date	linear	.XX±.01/.X±.3				projection	title			
AJ	?????	RLS	3-29-90		.XXX±.005/.XX±.13					TOP SHIELDED RIGHT ANGLE HEADER			
AK	V03-0413	GJP	4-14-03		.XXX±.0020/.XXX±.051					product family HEADERS			
AL	V05-0891	DAI	10/10/05		0° ±2'					code 213			
				angles	0° ±2'				INCH/MM	product family HEADERS			
				dr	R SEIPLE 3-30-90					size dwg no			
				enr	H SUNDY 3-30-90					A 65461			
				chr	H SUNDY 3-30-90					sheet 1 of 4			
				appd	H SUNDY 3-30-90				scale 2:1				
sheet index	revision sheet	AL 1	AL 2	AL 3	AL 4								

PRODUCT NO.
SEE TABLE




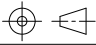
**VIEW A-A
STYLE M
SCALE 5:1**



**RECOMMENDED HOLE
PATTERN**

NOTES:

- ①. MOLDING MATERIAL; GLASS FILLED 30 % MIN POLYESTER. FLAME RETARDANT UL 94-0 COLOR - BLACK.
THIS PRODUCT WILL WITHSTAND EXPOSURE TO 260°C TEMPERATURE FOR 15 SECONDS IN A WAVE SOLDER APPLICATION WITH A .06 [1.5mm] THICK PCB.
- ②. TERMINAL MATERIAL, .0250±.0015/.635±.038 SQUARE 3/4 HARD PHOSPHOR BRONZE ALLOY UNS C510000. PLATING SEE TABULATION
- ③. .05/1.3 MAX HIGH FLASH
- ④. .03/.8 MAX FLASH.
- ⑤. TWO SIDES OF LEAD-IN ON PINS NOT PLATED. TYPICAL BOTH ENDS.
- ⑥. UL RECOGNIZED PRODUCT.
- ⑦. GXT Pd/Ni PLATED PRODUCT HAS GOLD FLASH.
- ⑧. FCI LOGO AND PART NUMBER ON THIS SURFACE WHEN POSSIBLE.
- ⑨. ADD SUFFIX LF AT THE END OF PART NUMBER FOR LEAD FREE OPTION.
- ⑩. THIS PRODUCT MEETS EUROPEAN UNION DIRECTIVES AND OTHER COUNTRY REGULATIONS AS DESCRIBED IN GS-22-008.
- ⑪. THIS PRODUCT MAY HAVE 100% TIN PLATING IN THE INTERFACE AND HAS NOT BEEN TESTED FOR WHISKER GROWTH IN INTERCONNECT ENVIRONMENTS.

mat'l. code NOTE 1		tolerances unless otherwise specified		CUSTOMER COPY	 www.fciconnect.com	
ltr	ecn no	dr	date	linear	projection	title
AL				.XX±.01/.X±.3		TOP SHIELDED RIGHT ANGLE HEADER
				.XXX±.005/.XX±.13		
				.XXX±.0020/.XXX±.051	INCH/MM	size
				angles	scale	dwg no
				0° ±2°	2:1	A
				dr		65461
				R SEIPLE		
				3-30-90		
				enr		
				H SUNDY		
				3-30-90		
				chr		
				H SUNDY		
				3-30-90		
				appd		
				H SUNDY		
				3-30-90		
sheet index	revision sheet					

cage code
22526

Tous droits strictement reserves. Reproduction ou communication a des tiers interdite sous quelque forme que ce soit sans autorisation ecrite du proprietaire. Propriete de c FCI. Droits de reproduction FCI.

All rights strictly reserved. Reproduction or issue to third parties in any form whatever is not permitted without written authority from the proprietor. Property of FCI. Copyright FCI.



A

B


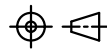
A

B

Tous droits strictement reserves. Reproduction ou communication a des tiers interdite sous quelque forme que ce soit sans autorisation ecrite du proprietaire. Propriete de c FCI. Droits de reproduction FCI.

All rights strictly reserved. Reproduction or issue to third parties in any form whatever is not permitted without written authority from the proprietor. Property of FCI. Copyright FCI.


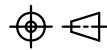
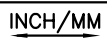
PRODUCT NO	NO OF POS	DIM A	DIM B	DIM C	OVERPLATING	UNDERPLATING	STYLE	POSITIONS POLARIZED	LF OPTION
65461-001	2x8	.800/20.32	.700/17.78	.09/2.3	30u"/.76u GOLD	50u"/1.27u NICKEL	P	NONE	↑
↑	-002	2x9	.900/22.86	.800/20.32	↑	↑	P	↑	↑
	-003	2x10	1.000/25.40	.900/22.86			M		
	-004	2x12	1.200/30.48	1.100/27.94			P		
	-005	2x13	1.300/33.02	1.200/30.48			M		
	-006	2x17	1.700/43.18	1.600/40.64			↑		
	-007	2x20	2.000/50.80	1.900/48.26			↓		
	-008	2x25	2.500/63.50	2.400/60.96	30u"/.76u GOLD		M		
	-009	2x8	.800/20.32	.700/17.78	150u"/3.81u TIN		P		
	-010	2x9	.900/22.86	.800/20.32			↑		
	-011	2x10	1.000/25.40	.900/22.86					
	-012	2x12	1.200/30.48	1.100/27.94					
	-013	2x13	1.300/33.02	1.200/30.48					
	-014	2x17	1.700/43.18	1.600/40.64					
	-015	2x20	2.000/50.80	1.900/48.26					
	-016	2x25	2.500/63.50	2.400/60.96	150u"/3.81u TIN				
	-017	2x14	1.400/35.56	1.300/33.02	30u"/.76u GOLD				
	-018	2x14	1.400/35.56	1.300/33.02	150u"/3.81u TIN				
	-019	2x5	.500/12.70	.400/10.16	30u"/.76u GOLD				
	-020	2x5	.500/12.70	.400/10.16	150u"/3.81u TIN				NOTE 9
	-021	2x8	.800/20.32	.700/17.78	.49/12.4	30u"/.76u GOLD		NONE	
	-022	2x5	.500/12.70	.400/10.16	.15/3.8	50u"/1.27u GOLD		A-3	
	-023	2x5	.500/12.70	.400/10.16	.15/3.8	50u"/1.27u GOLD		A-4	
	-024	2x8	.800/20.32	.700/17.78	.15/3.8	50u"/1.27u GOLD		A-3	
	-025	2x7	.700/17.78	.600/15.24	.09/2.3	30u"/.76u GOLD		NONE	
	-026	2x7	.700/17.78	.600/15.24	.09/2.3	150u"/3.81u TIN		NONE	
	-027	2x10	1.000/25.40	.900/22.86	.15/3.8	50u"/1.27u GOLD		A-3	
	-028	2x8	.800/20.32	.700/17.78	.15/3.8	50u"/1.27u GOLD	P	A-4,6	
	-029	2x10	1.000/25.40	.900/22.86	.09/2.3	30u"/.76u GOLD	M	RDW B	
	-030	2x14	1.400/35.56	1.300/33.02	.09/2.3	30u"/.76u GOLD	M	RDW B	
	-031	2x20	2.000/50.80	1.900/48.26	.09/2.3	50u"/1.27u GOLD	M	NONE	
	-032	2x8	.800/20.32	.700/17.78	.15/3.8	50u"/1.27u GOLD	P	A-2,3,5,&B-2,3	
	-033	2x17	1.700/43.18	1.600/40.64	.15/3.8	30u"/.76u GOLD	M	NONE	
	-034	2x3	.300/7.62	.200/5.08	.09/2.3		P	↑	
	-035	2x6	.600/15.24	.500/12.70	.09/2.3		↑		
	-036	2x24	2.400/60.96	2.300/58.42	.09/2.3		↓		
	-037	2x20	2.000/50.80	1.900/48.26	.49/12.4		P		
	-038	2x5	.500/12.70	.400/10.16	.09/2.3		M		
	-039	2x8	.800/20.32	.700/17.78	.15/3.8		↑		
	-040	2x13	1.300/33.02	1.200/30.48					
	-041	2x10	1.000/25.40	.900/22.86					
	-042	2x5	.500/12.70	.400/10.16			↓		
65461-001	2x20	2.000/50.80	1.900/48.26	.15/3.8	30u"/.76u GOLD	50u"/1.27u NICKEL	M	NONE	↓

mat'l. code		tolerances unless otherwise specified		CUSTOMER COPY	 www.fciconnect.com
ltr	ecn no	dr	date		
AL				.XX±.01/.X±.3	projection  INCH/MM
				.XXX±.005/.XX±.13	
				.XXX±.0020/.XXX±.051	product family HEADERS size dwg no A 65461
				angles 0° ±2°	
				dr R SEIPLE 4-2-90	code 213
				engr H SUNDY 4-2-90	
				chr H SUNDY 4-2-90	sheet 3 of
				appd H SUNDY 4-2-90	
sheet index	revision sheet				

PRODUCT NO	NO OF POS	DIM A	DIM B	DIM C	OVERPLATING	UNDERPLATING	STYLE	POSITIONS POLARIZED	LF OPTION
65461-044	2x12	1,200/30.48	1,100/27.94	.26/6.6	30u"/.76u GOLD	50u"/1.27u NICKEL	M	NONE	↑
↑ -045	2x36	3,600/91.44	3,500/88.90	.09/2.3	↕	↑	M	NONE	
-046	2x10	1,000/25.40	.900/22.86	.15/3.8			P	A-3	
-047	2x8	.800/20.32	.700/17.78	.15/3.8	30u"/.76u GOLD		P	A-2,3,5 & B-2,3	
-048	2x10	1,000/25.40	.900/22.86	.09/2.3	150u"/3.81u TIN		M	NONE	
-049	2x10	1,000/25.40	.900/22.86	.09/2.3	150u"/.38u GOLD		M	NONE	
-050	2x14	1,400/35.56	1,300/33.02	.18/4.6	30u"/.76u GOLD		P	A-2	
-051	2x17	1,700/43.18	1,600/40.64	.09/2.3	15u"/.38u GOLD		M	NONE	
-052	2x3	.300/7.62	.200/5.08	.09/2.3	30u"/.76u GOLD		M	NONE	
-053	2x5	.500/12.70	.400/10.16	.09/2.3	50u"/1.27u GOLD		P	B-4	
-054	2x13	1,300/33.02	1,200/30.48	.09/2.3	30u"/.76u GXT		M	NONE	
-055	2x12	1,200/30.48	1,100/27.94	.11/2.8	↑		M	NONE	
-056	2x17	1,700/43.18	1,600/40.64	.11/2.8			M	NONE	
-057	2x25	2,500/63.50	2,400/60.96	.11/2.8			M	NONE	
-058	2x13	1,300/33.02	1,200/30.48	.11/2.8			M	NONE	
-059	2x10	1,000/25.40	.900/22.86	.15/3.8			M	ROW B	
-060	2x14	1,400/35.56	1,300/33.02	.15/3.8			M	ROW B	
-061	2x20	2,000/50.80	1,900/48.26	.11/2.8	30u"/.76u GXT		M	NONE	
-062	2x12	1,200/30.48	1,100/27.94	.11/2.8	150u"/3.81u TIN		M	NONE	
-063	2x17	1,700/43.18	1,600/40.64	.11/2.8	↑		M	NONE	NOTE 9
-064	2x25	2,500/63.50	2,400/60.96	.11/2.8			M	NONE	
-065	2x13	1,300/33.02	1,200/30.48	.11/2.8			M	NONE	
-066	2x10	1,000/25.40	.900/22.86	.15/3.8			M	ROW-B	
-067	2x14	1,400/35.56	1,300/33.02	.15/3.8			M	ROW-B	
-068	2x20	2,000/50.80	1,900/48.26	.11/2.8	150u"/3.81u TIN		M	NONE	
-069	2x8	.800/20.32	.700/17.78	.09/2.3	30u"/.76u GOLD		M	NONE	
-070	2x13	1,300/33.02	1,200/30.48	.09/2.3	↑		P	NONE	
-071	2x14	1,400/35.56	1,300/33.02	.11/2.8			M	NONE	
-072	2x32	3,200/81.28	3,100/78.74	.11/2.8			P	NONE	
-073	2x15	1,500/38.106	1,400/35.56	.11/2.8	↓		M	NONE	
↓ -074	2x30	3,000/76.20	2,900/73.66	.11/2.8	30u"/.76u GOLD		M	NONE	
65461-075	2x17	1,700/43.18	1,600/40.64	.11/2.8	30u"/.76u GXT	50u"/1.27u NICKEL	P	NONE	↓

Tous droits strictement reserves. Reproduction ou communication a des tiers interdite sous quelque forme que ce soit sans autorisation ecrite du proprietaire. Propriete de c FCI. Droits de reproduction FCI.

All rights strictly reserved. Reproduction or issue to third parties in any form whatever is not permitted without written authority from the proprietor. Property of FCI. Copyright FCI.

mat'l. code		tolerances unless otherwise specified		CUSTOMER COPY		 www.fciconnect.com	
ltr	ecn no	dr	date	linear	.XX±.01/.X±.3	projection	
AL					.XXX±.005/.XX±.13		
					.XXX±.0020/.XXX±.051		
				angles	0° ±2°	INCH/MM	
				dr	R SEIPLE 4-2-90		
				engr	H SUNDY 4-2-90		
				chr	H SUNDY 4-2-90	scale	A
				appd	H SUNDY 4-2-90		
sheet index	revision sheet						

Компания «Life Electronics» занимается поставками электронных компонентов импортного и отечественного производства от производителей и со складов крупных дистрибьюторов Европы, Америки и Азии.

С конца 2013 года компания активно расширяет линейку поставок компонентов по направлению коаксиальный кабель, кварцевые генераторы и конденсаторы (керамические, пленочные, электролитические), за счёт заключения дистрибьюторских договоров

Мы предлагаем:

- Конкуренеспособные цены и скидки постоянным клиентам.
- Специальные условия для постоянных клиентов.
- Подбор аналогов.
- Поставку компонентов в любых объемах, удовлетворяющих вашим потребностям.
- Приемлемые сроки поставки, возможна ускоренная поставка.
- Доставку товара в любую точку России и стран СНГ.
- Комплексную поставку.
- Работу по проектам и поставку образцов.
- Формирование склада под заказчика.
- Сертификаты соответствия на поставляемую продукцию (по желанию клиента).
- Тестирование поставляемой продукции.
- Поставку компонентов, требующих военную и космическую приемку.
- Входной контроль качества.
- Наличие сертификата ISO.

В составе нашей компании организован Конструкторский отдел, призванный помогать разработчикам, и инженерам.

Конструкторский отдел помогает осуществить:

- Регистрацию проекта у производителя компонентов.
- Техническую поддержку проекта.
- Защиту от снятия компонента с производства.
- Оценку стоимости проекта по компонентам.
- Изготовление тестовой платы монтаж и пусконаладочные работы.



Тел: +7 (812) 336 43 04 (многоканальный)

Email: org@lifeelectronics.ru