

FEATURES

- Accurate monitoring of up to four power supply voltages
- 5 factory set threshold options: 1.8 V, 2.5 V, 3.0 V, 3.3 V, 5 V
- Adjustable input threshold voltage = 0.62 V (1.5% accuracy)
- 200 ms typical reset timeout
- Open-drain RESET output (10 μ A internal pull-up)
- Reset output stage: active low, valid to $IN_1 = 1$ V or $IN_2 = 1$ V
- Low power consumption (35 μ A)
- Power supply glitch immunity
- Specified from -40°C to $+125^{\circ}\text{C}$
- 6-lead SOT-23 package

APPLICATIONS

- Telecommunications
- Microprocessor systems
- Desktop and notebook computers
- Data storage equipment
- Servers/workstations

GENERAL DESCRIPTION

The [ADM6710](#) is a low voltage, high accuracy supervisory circuit. The device monitors up to four system supply voltages.

The [ADM6710](#) incorporates a variety of internally pretrimmed undervoltage threshold options for monitoring 1.8 V, 2.5 V, 3.0 V, 3.3 V and 5.0 V supply voltages. The [ADM6710Q](#) offers three adjustable thresholds for monitoring voltages down to 0.62 V. See the Ordering Guide section for a list and description of all available options.

If a monitored power supply voltage falls below the minimum voltage threshold, a single active low output asserts, triggering a system reset. The output is open-drain with a weak internal pull-up to the monitored IN_2 supply (or to V_{CC} in the case of the

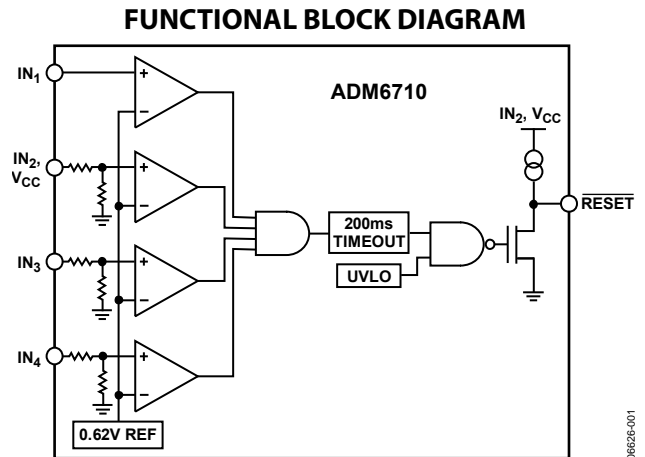


Figure 1.

[ADM6710Q](#)) of typically 10 μ A. After all voltages rise above the selected threshold level, the reset signal remains low for the reset timeout period (200 ms typical).

The [ADM6710](#) output remains valid as long as IN_1 or IN_2 exceeds 1 V, whereas for the [ADM6710Q](#), the output remains valid as long as V_{CC} exceeds 2 V.

Unused monitored inputs must not be allowed to float or to be grounded, instead they must be connected to a supply voltage greater than their specified threshold voltages.

The [ADM6710](#) is available in a 6-lead SOT-23 package. The device operates over the extended temperature range of -40°C to $+125^{\circ}\text{C}$.

TABLE OF CONTENTS

| | | | |
|--|---|---|---|
| Features | 1 | Typical Performance Characteristics | 6 |
| Applications | 1 | Theory of Operation | 8 |
| Functional Block Diagram | 1 | Input Configuration | 8 |
| General Description | 1 | RESET Output Configuration | 8 |
| Revision History | 2 | Addition Of Manual Reset | 8 |
| Specifications | 3 | Outline Dimensions | 9 |
| Absolute Maximum Ratings | 4 | Ordering Guide | 9 |
| ESD Caution | 4 | | |
| Pin Configurations and Function Descriptions | 5 | | |

REVISION HISTORY

11/15—Rev. A to Rev. B

| | |
|---|---|
| Changes to Features Section and General Description Section | 1 |
| Changes to Operating Voltage Range, V_{IN2} Parameter and RESET Output Low (V_{OL}) Parameter, Table 1 | 3 |
| Change to Storage Temperature Range Parameter and Operating Temperature Range Parameter, Table 2 | 4 |
| Changes to Figure 4, Figure 6, and Figure 9 | 6 |
| Updated Outline Dimensions | 9 |
| Changes to Ordering Guide | 9 |

10/10—Rev. 0 to Rev. A

| | |
|-----------------------|---|
| Added Figure 17 | 9 |
|-----------------------|---|

6/07—Revision 0: Initial Version

SPECIFICATIONS

$V_{IN2} = 1\text{ V to }5.5\text{ V}$, $T_A = -40^\circ\text{C to }+125^\circ\text{C}$, unless otherwise noted. Typical values are $V_{IN2} = 3.0\text{ V to }3.3\text{ V}$, $T_A = 25^\circ\text{C}$.

Table 1.

| Parameter | Min | Typ | Max | Units | Test Conditions/Comments |
|--|----------------------|-------|-------|-----------------------|---|
| OPERATING VOLTAGE RANGE | | | | | |
| V_{CC}^1 | 2.0 | | 5.5 | V | ADM6710Q only |
| V_{IN2}^2 | 1.0 | | 5.5 | V | All devices except ADM6710Q; $T_A = 0^\circ\text{C to }+125^\circ\text{C}$ |
| | 1.2 | | 5.5 | V | All devices except ADM6710Q; $T_A = -40^\circ\text{C to }+125^\circ\text{C}$ |
| INPUT CURRENT | | | | | |
| IN_x Input Current | | 25 | 40 | μA | IN_x = nominal input voltage (for 1.8 V, 2.5 V and 5.0 V supplies) |
| | | 55 | 115 | μA | IN_2 = nominal input voltage (for 3.0 V and 3.3 V supplies); the supply splits into 25 μA for the resistor divider and 30 μA for other circuits |
| | | | 0.4 | μA | $V_{IN1} = 0\text{ V to }0.85\text{ V}$ (for adjustable thresholds) |
| | | | 0.2 | μA | $V_{IN3}, V_{IN4} = 0\text{ V to }0.85\text{ V}$ (for adjustable thresholds) |
| I_{CC} Input Current | | 35 | 50 | μA | ADM6710Q only; $V_{CC} = 5.5\text{ V}$ |
| THRESHOLD VOLTAGE | | | | | |
| Threshold Voltage (V_{TH}) | 4.50 | 4.63 | 4.75 | V | IN_x decreasing; 5 V (–5%) |
| | 4.25 | 4.38 | 4.50 | V | IN_x decreasing; 5 V (–10%) |
| | 3.00 | 3.08 | 3.15 | V | IN_x decreasing; 3.3 V (–5%) |
| | 2.85 | 2.93 | 3.00 | V | IN_x decreasing; 3.3 V (–10%) |
| | 2.70 | 2.78 | 2.85 | V | IN_x decreasing; 3.0 V (–5%) |
| | 2.55 | 2.63 | 2.70 | V | IN_x decreasing; 3.0 V (–10%) |
| | 2.25 | 2.32 | 2.38 | V | IN_x decreasing; 2.5 V (–5%) |
| | 2.13 | 2.19 | 2.25 | V | IN_x decreasing; 2.5 V (–10%) |
| | 1.62 | 1.67 | 1.71 | V | IN_x decreasing; 1.8 V (–5%) |
| | 1.53 | 1.58 | 1.62 | V | IN_x decreasing; 1.8 V (–10%) |
| Adjustable Threshold (V_{TH}) | 0.611 | 0.620 | 0.629 | V | IN_x decreasing |
| RESET THRESHOLD HYSTERESIS (V_{HYST}) | | 0.3 | | $\%V_{TH}$ | IN_x increasing relative to IN_x decreasing |
| RESET THRESHOLD TEMPERATURE COEFFICIENT (TCV_{TH}) | | 60 | | ppm/ $^\circ\text{C}$ | |
| IN_x to RESET DELAY (t_{RP}) | | 30 | | μs | V_{IN} falling at 10 mV/ μs from V_{TH} to $V_{TH} - 50\text{ mV}$ |
| RESET TIMEOUT PERIOD (t_{RP}) | 140 | 200 | 280 | ms | |
| RESET OUTPUT LOW (V_{OL}) | | | 0.3 | V | $V_{IN2}, V_{CC} = 5\text{ V}, I_{SINK} = 2\text{ mA}$ |
| | | | 0.4 | V | $V_{IN2}, V_{CC} = 2.5\text{ V}, I_{SINK} = 1.2\text{ mA}$ |
| | | | 0.3 | V | $V_{IN2} = 1.0, I_{SINK} = 20\text{ }\mu\text{A}, T_A = 0^\circ\text{C to }+125^\circ\text{C}$ |
| RESET OUTPUT HIGH (V_{OH}) | $0.8 \times V_{CC}$ | | | V | $V_{CC} \geq 2.0\text{ V}, I_{SOURCE} = 4\text{ }\mu\text{A}, \overline{\text{RESET}}$ deasserted (ADM6710Q only) |
| | $0.8 \times V_{IN2}$ | | | V | $V_{IN2} \geq 2.0\text{ V}, I_{SOURCE} = 4\text{ }\mu\text{A}, \overline{\text{RESET}}$ deasserted |
| RESET OUTPUT HIGH SOURCE CURRENT (I_{OH}) | | 10 | | μA | $V_{IN2} \geq 2.0\text{ V}, \overline{\text{RESET}}$ deasserted |

¹ Note that the ADM6710Q is powered from V_{CC} .

² The RESET output is guaranteed to be in the correct state for IN_1 or IN_2 down to 1 V.

ABSOLUTE MAXIMUM RATINGS

Table 2.

| Parameter | Rating |
|---|-----------------|
| V_{CC} , IN_x , \overline{RESET} to GND | -0.3 V to +6 V |
| Continuous \overline{RESET} Current | 20 mA |
| Storage Temperature Range | -65°C to +150°C |
| Operating Temperature Range | -40°C to +125°C |
| Lead Temperature (10 sec) | 300°C |
| Junction Temperature | 135°C |

Stresses at or above those listed under Absolute Maximum Ratings may cause permanent damage to the product. This is a stress rating only; functional operation of the product at these or any other conditions above those indicated in the operational section of this specification is not implied. Operation beyond the maximum operating conditions for extended periods may affect product reliability.

Table 3. Thermal Resistance

| Package Type | θ_{JA} | Unit |
|---------------|---------------|------|
| 6-lead SOT-23 | 169.5 | °C/W |

ESD CAUTION



ESD (electrostatic discharge) sensitive device. Charged devices and circuit boards can discharge without detection. Although this product features patented or proprietary protection circuitry, damage may occur on devices subjected to high energy ESD. Therefore, proper ESD precautions should be taken to avoid performance degradation or loss of functionality.

PIN CONFIGURATIONS AND FUNCTION DESCRIPTIONS



Figure 2. ADM6710 Pin Configuration



Figure 3. ADM6710Q Pin Configuration

Table 4. Pin Function Descriptions

| Pin No. | Mnemonic | Description |
|---------|-----------------|---|
| 1 | IN ₁ | Input Voltage 1. |
| 2 | IN ₂ | Input Voltage 2. IN ₂ is the power supply input for the ADM6710. |
| | V _{CC} | V _{CC} is the power supply input for the ADM6710Q. It is not a monitored input. |
| 3 | IN ₃ | Input Voltage 3. |
| 4 | IN ₄ | Input Voltage 4. |
| 5 | GND | Ground. |
| 6 | RESET | Active Low RESET Output. RESET goes low when an input drops below the specified threshold. Once all inputs rise above the threshold voltage, RESET remains low for 200 ms (typical) before going high. RESET is open drain with a weak internal pull-up to IN ₂ or, in the case of the ADM6710Q, to V _{CC} , typically 10 μA. |

TYPICAL PERFORMANCE CHARACTERISTICS

$V_{IN2} = V_{CC} = 3.0V$, $T_A = 25^\circ C$, unless otherwise noted.

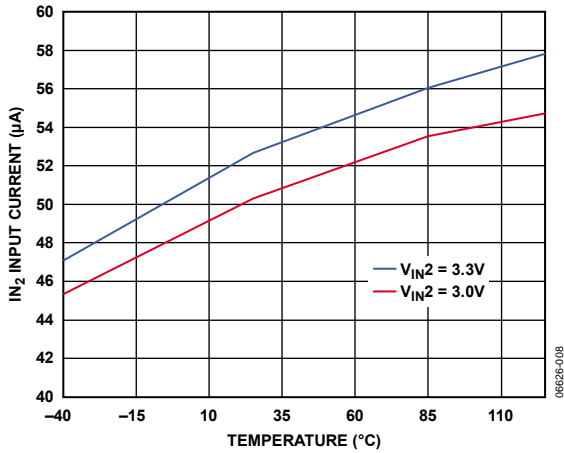


Figure 4. I_{N2} Input Current vs. Temperature



Figure 7. Maximum I_{N_x} Transient Duration vs. Reset Threshold Overdrive

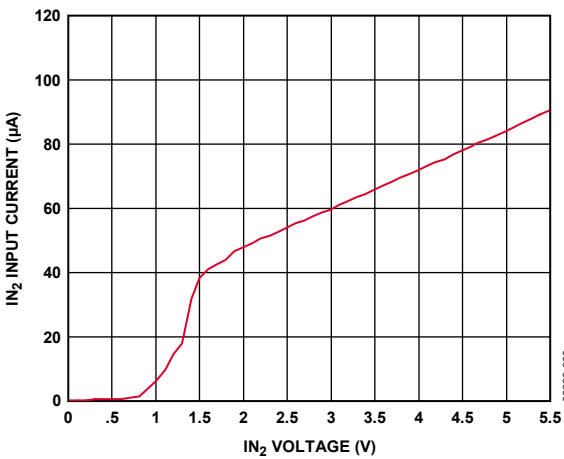


Figure 5. I_{N2} Input Current vs. I_{N2} Voltage

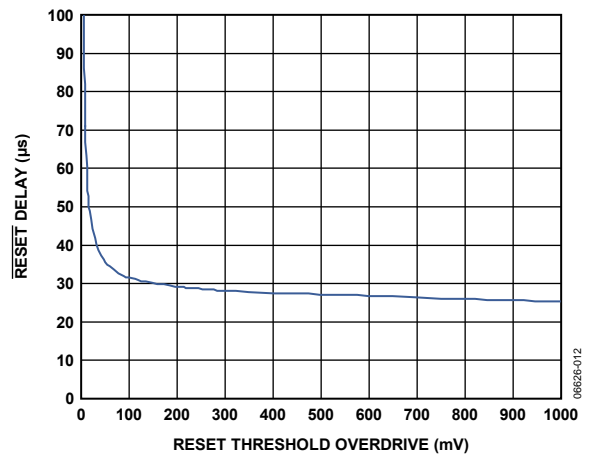


Figure 8. \overline{RESET} Delay vs. Reset Threshold Overdrive (I_{N_x} Decreasing)

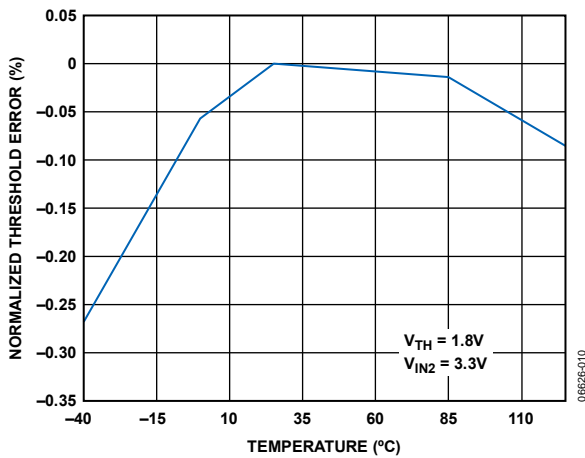


Figure 6. Normalized Threshold Error vs. Temperature

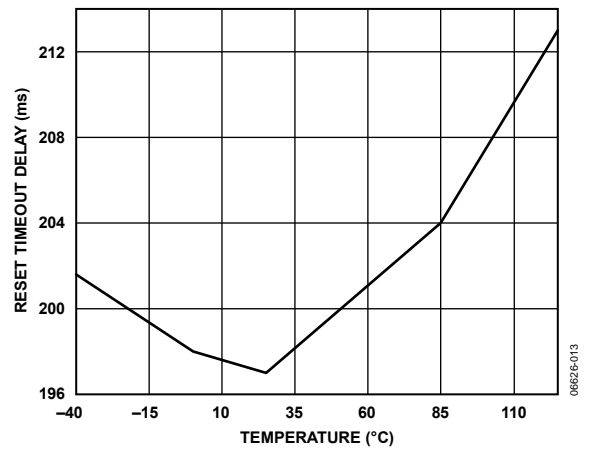


Figure 9. Reset Timeout Delay vs. Temperature

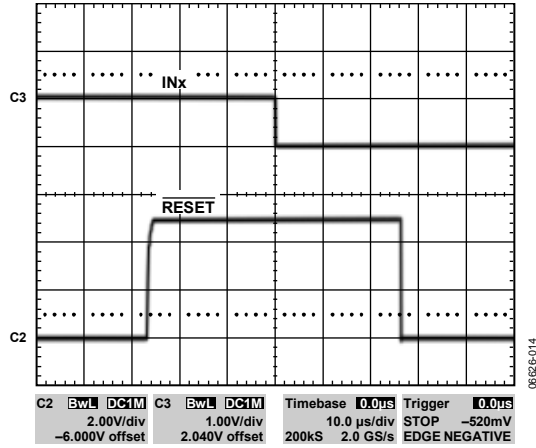


Figure 10. RESET Pull-Up and Pull-Down Response (10 μs/div)

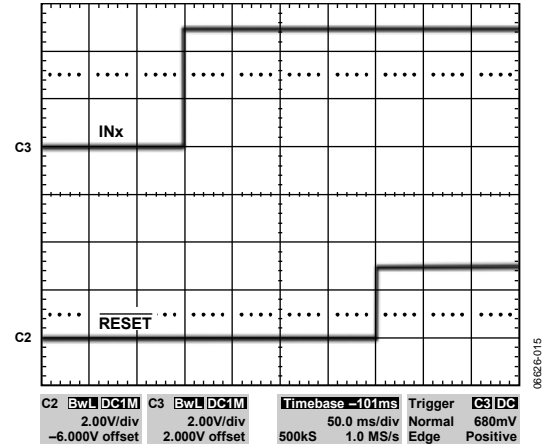


Figure 11. RESET Timeout Delay (50 ms/div)

THEORY OF OPERATION

The **ADM6710** is a compact, low power supervisory circuit capable of monitoring up to four voltages in a multisupply application.

The device includes several factory-set voltage threshold options for monitoring 1.8 V, 2.5 V, 3.0 V, 3.3 V and 5.0 V supplies. It also provides up to three adjustable thresholds for monitoring voltages down to 0.62 V. See the Ordering Guide section for a list and description of all available options.

The **ADM6710Q** has three adjustable voltage inputs and is powered by V_{CC} , which is not a monitored voltage. All other **ADM6710** devices are powered by IN_2 , which is a monitored voltage, and therefore monitors up to four voltages. If a monitored voltage drops below its associated threshold, the active low reset output asserts low and remains low while either IN_1 or IN_2 remains above 1.0 V.

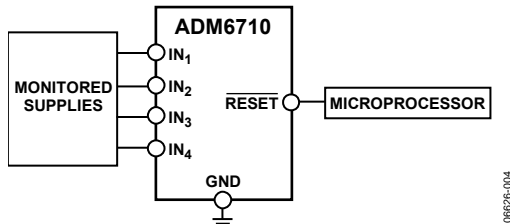


Figure 12. Typical Applications Circuit

INPUT CONFIGURATION

The **ADM6710** provides numerous monitor choices with adjustable reset thresholds. Typically, the threshold voltage at each adjustable IN_x input is 0.62 V. To monitor a voltage greater than 0.62 V, connect a resistor divider network to the circuit as depicted in Figure 13, where

$$V_{INTH} = 0.62 V \left(\frac{R_1 + R_2}{R_2} \right)$$

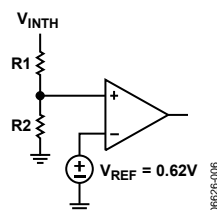


Figure 13. Setting the Adjustable Monitor

The internal comparators each typically have a hysteresis of 0.3% with respect to the reset threshold. This built-in hysteresis improves the device's immunity to ambient noise without noticeably reducing the threshold accuracy. The **ADM6710** is unaffected by short input transients.

The **ADM6710** is powered from the monitored IN_2 , or V_{CC} in the case of the **ADM6710Q**. Monitored inputs are resistant to short power supply glitches. Figure 7 depicts the **ADM6710** glitch immunity data. To increase noise immunity in noisy applications, place a 0.1 μ F capacitor between the IN_2 input and ground.

Adding capacitance to IN_1 , IN_3 , and IN_4 also improves noise immunity.

Do not allow unused monitor inputs to float or to be grounded. Connect these inputs to a supply voltage greater than their specified threshold voltages. In the case of unused IN_x adjustable inputs, limit the bias current by connecting a 1 M Ω series resistor between the unused input and IN_2 (or V_{CC} in the case of the **ADM6710Q**).

RESET OUTPUT CONFIGURATION

The \overline{RESET} output asserts low if a monitored IN_x voltage drops below its voltage threshold. Once all voltages rise above the selected threshold level, the reset signal remains low for the reset timeout period (200 ms typical). The reset output is open drain with a weak internal pull-up to the monitored IN_2 or V_{CC} supply, typically 10 μ A.

Many applications that interface with other logic devices do not require an external pull-up resistor. However, if an external pull-up resistor is required and it is connected to a voltage ranging from 0 V to 5.5 V, it will overdrive the internal pull-up. Reverse current flow from the external pull-up voltage to IN_2 is prevented by the internal circuitry.

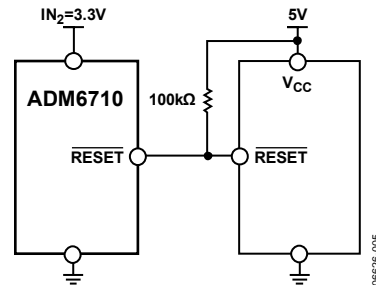


Figure 14. Interface with a Different Logic Supply Voltage

ADDITION OF MANUAL RESET

Use the circuit shown in Figure 15 to add manual reset to any of the **ADM6710** adjustable inputs. When the switch is closed, the analog input shorts to ground and a \overline{RESET} output commences. The switch must remain open for a minimum of 140 ms for the \overline{RESET} output to deassert.

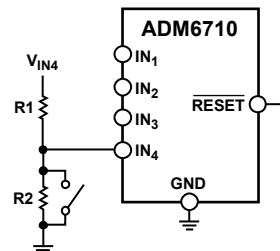


Figure 15. Addition of Manual Reset (IN_4 is an Adjustable Input)

OUTLINE DIMENSIONS



COMPLIANT TO JEDEC STANDARDS MO-178-AB

Figure 16. 6-Lead Small Outline Transistor Package [SOT-23] (RJ-6)

Dimensions shown in millimeters



Figure 17. ADM6710 Reel Orientation

ORDERING GUIDE

| Model ^{1, 2} | Nominal Input Voltage | | | | Supply Tolerance (%) | Temperature Range | Package Description | Package Option | Branding |
|-----------------------|-----------------------|-----------------|-----------------|-----------------|----------------------|-------------------|---------------------|----------------|----------|
| | IN ₁ | IN ₂ | IN ₃ | IN ₄ | | | | | |
| ADM6710AARJZ-REEL7 | 5 | 3.3 | 2.5 | Adj. | 10 | -40°C to +125°C | 6-Lead SOT-23 | RJ-6 | MA9 |
| ADM6710BARJZ-REEL7 | 5 | 3.3 | 2.5 | Adj. | 5 | -40°C to +125°C | 6-Lead SOT-23 | RJ-6 | MAH |
| ADM6710CARJZ-REEL7 | 5 | 3.3 | 1.8 | Adj. | 10 | -40°C to +125°C | 6-Lead SOT-23 | RJ-6 | MAJ |
| ADM6710DARJZ-REEL7 | 5 | 3.3 | 1.8 | Adj. | 5 | -40°C to +125°C | 6-Lead SOT-23 | RJ-6 | MAK |
| ADM6710EARJZ-REEL7 | Adj. | 3.3 | 2.5 | 1.8 | 10 | -40°C to +125°C | 6-Lead SOT-23 | RJ-6 | MAX |
| ADM6710FARJZ-REEL7 | Adj. | 3.3 | 2.5 | 1.8 | 5 | -40°C to +125°C | 6-Lead SOT-23 | RJ-6 | MA4 |
| ADM6710GARJZ-REEL7 | 5 | 3.3 | Adj. | Adj. | 10 | -40°C to +125°C | 6-Lead SOT-23 | RJ-6 | MAL |
| ADM6710HARJZ-REEL7 | 5 | 3.3 | Adj. | Adj. | 5 | -40°C to +125°C | 6-Lead SOT-23 | RJ-6 | MAM |
| ADM6710IARJZ-REEL7 | Adj. | 3.3 | 2.5 | Adj. | 10 | -40°C to +125°C | 6-Lead SOT-23 | RJ-6 | MAN |
| ADM6710JARJZ-REEL7 | Adj. | 3.3 | 2.5 | Adj. | 5 | -40°C to +125°C | 6-Lead SOT-23 | RJ-6 | MAP |
| ADM6710KARJZ-REEL7 | Adj. | 3.3 | 1.8 | Adj. | 10 | -40°C to +125°C | 6-Lead SOT-23 | RJ-6 | MAQ |
| ADM6710LARJZ-REEL7 | Adj. | 3.3 | 1.8 | Adj. | 5 | -40°C to +125°C | 6-Lead SOT-23 | RJ-6 | MAR |
| ADM6710MARJZ-REEL7 | Adj. | 3 | 2.5 | Adj. | 10 | -40°C to +125°C | 6-Lead SOT-23 | RJ-6 | MAS |
| ADM6710NARJZ-REEL7 | Adj. | 3 | 2.5 | Adj. | 5 | -40°C to +125°C | 6-Lead SOT-23 | RJ-6 | MAT |
| ADM6710OARJZ-REEL7 | Adj. | 3 | 1.8 | Adj. | 10 | -40°C to +125°C | 6-Lead SOT-23 | RJ-6 | MAU |
| ADM6710PARJZ-REEL7 | Adj. | 3 | 1.8 | Adj. | 5 | -40°C to +125°C | 6-Lead SOT-23 | RJ-6 | MAV |
| ADM6710QARJZ-REEL7 | Adj. | V _{CC} | Adj. | Adj. | Not applicable | -40°C to +125°C | 6-Lead SOT-23 | RJ-6 | MAW |

¹ Z = RoHS Compliant Part.

² Adjustable voltage based on 0.62 V internal threshold. The external threshold voltage can be set using an external resistor divider.

NOTES

NOTES

NOTES

Компания «Life Electronics» занимается поставками электронных компонентов импортного и отечественного производства от производителей и со складов крупных дистрибьюторов Европы, Америки и Азии.

С конца 2013 года компания активно расширяет линейку поставок компонентов по направлению коаксиальный кабель, кварцевые генераторы и конденсаторы (керамические, пленочные, электролитические), за счёт заключения дистрибьюторских договоров

Мы предлагаем:

- Конкурентоспособные цены и скидки постоянным клиентам.
- Специальные условия для постоянных клиентов.
- Подбор аналогов.
- Поставку компонентов в любых объемах, удовлетворяющих вашим потребностям.
- Приемлемые сроки поставки, возможна ускоренная поставка.
- Доставку товара в любую точку России и стран СНГ.
- Комплексную поставку.
- Работу по проектам и поставку образцов.
- Формирование склада под заказчика.
- Сертификаты соответствия на поставляемую продукцию (по желанию клиента).
- Тестирование поставляемой продукции.
- Поставку компонентов, требующих военную и космическую приемку.
- Входной контроль качества.
- Наличие сертификата ISO.

В составе нашей компании организован Конструкторский отдел, призванный помогать разработчикам, и инженерам.

Конструкторский отдел помогает осуществить:

- Регистрацию проекта у производителя компонентов.
- Техническую поддержку проекта.
- Защиту от снятия компонента с производства.
- Оценку стоимости проекта по компонентам.
- Изготовление тестовой платы монтаж и пусконаладочные работы.



Тел: +7 (812) 336 43 04 (многоканальный)

Email: org@lifeelectronics.ru