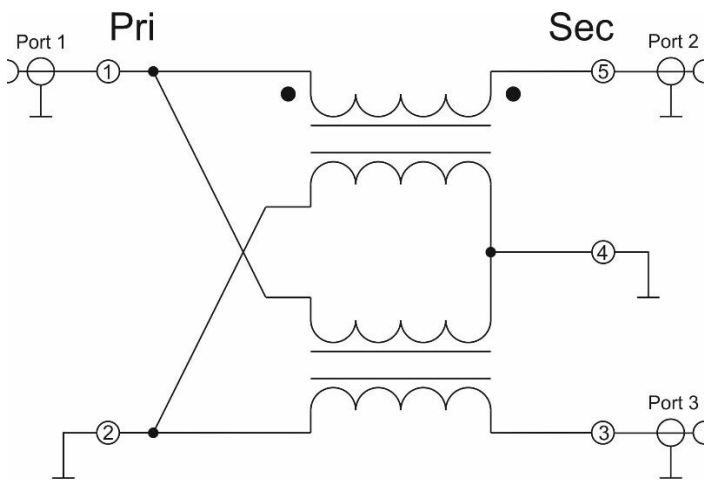


RFXF0008

1:2.78 SMT Transformer
45MHz to 1218MHz

The RFXF0008 transformer is designed for applications that require small, low cost and highly reliable surface mount components. Applications may be found in broadband, wireless and other communications systems. These units are built lead-free and RoHS compliant. S-Parameters are available on request.



Functional Block Diagram



Package: SP6

Features

- 45MHz to 1218MHz Operation
- Low Cost and RoHS Compliant
- Industry Standard SMT Package
- Available in Tape-and-Reel
- 75 Ω Characteristic Impedance

Applications

- Broadband/CATV
- Wireless

Ordering Information

| | |
|--------------|---------------------------------|
| RFXF0008SB | Sample bag with 5 pieces |
| RFXF0008SQ | Sample bag with 25 pieces |
| RFXF0008SR | 13" Sample reel with 100 pieces |
| RFXF0008TR13 | 13" Reel with 1000 pieces |

RFXF0008

Absolute Maximum Ratings

| Parameter | Rating | Unit |
|-----------------------------|-------------|------|
| RF Power | 2 | W |
| Operating Temperature Range | -40 to +100 | °C |
| Storage Temperature Range | -55 to +100 | °C |



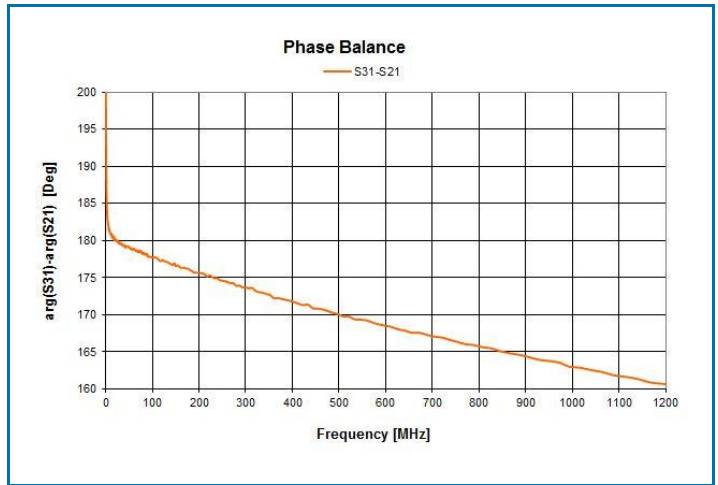
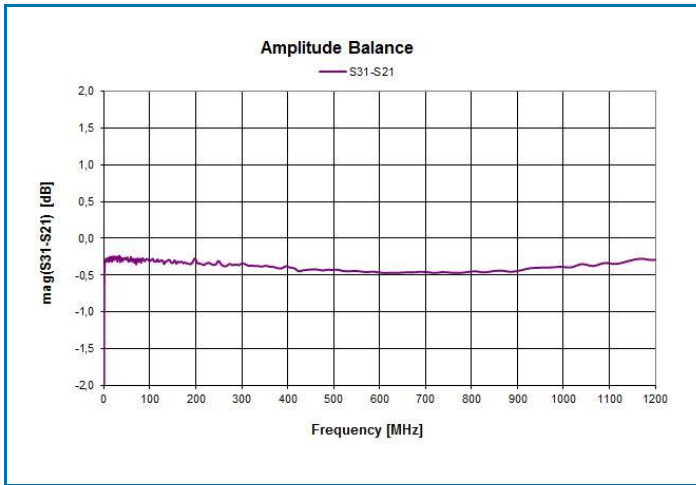
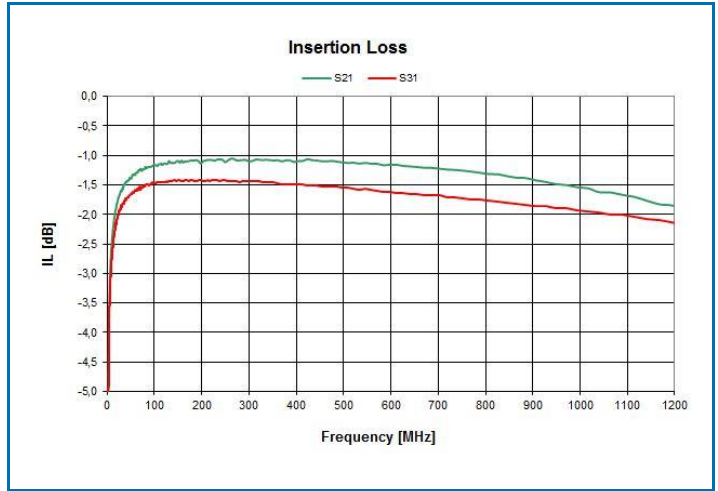
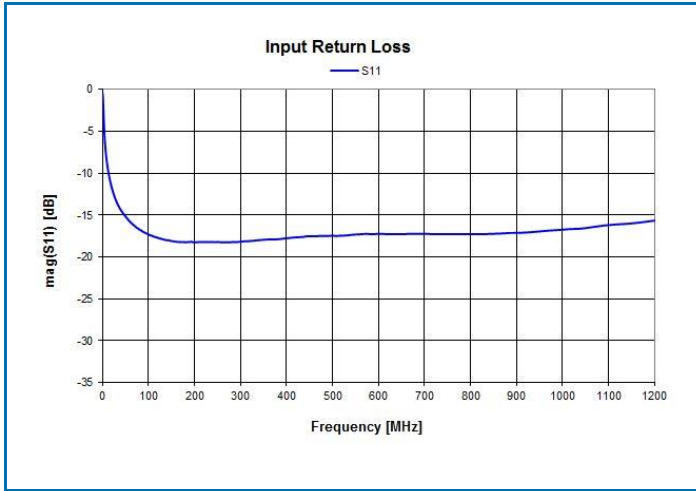
RoHS (Restriction of Hazardous Substances): Compliant per EU Directive 2011/65/EU

Exceeding any one or a combination of the Absolute Maximum Rating conditions may cause permanent damage to the device. Extended application of Absolute Maximum Rating conditions to the device may reduce device reliability. Specified typical performance or functional operation of the device under Absolute Maximum Rating conditions is not implied.

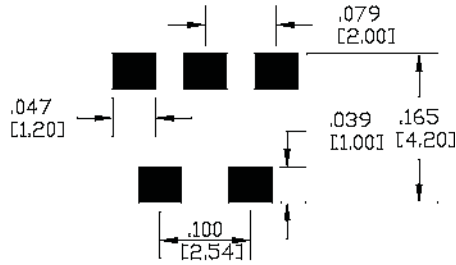
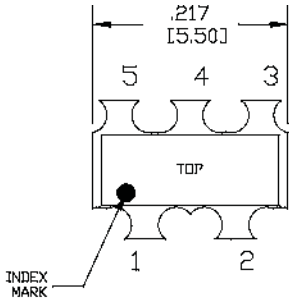
Nominal Operating Parameters

| Parameter | Specification | | | Unit | Condition |
|------------------------------------------------------------------------------|----------------------|-----|------|------|--------------------------------------------------------|
| | Min | Typ | Max | | |
| General Performance. Typical values represent Mid Band performance at T=25°C | | | | | |
| Operating Frequency Range | 45 | | 1218 | MHz | |
| Insertion Loss | | 1.6 | 2.0 | dB | 45 MHz to 200 MHz |
| | | 1.5 | 2.0 | dB | 200 MHz to 600 MHz |
| | | 1.9 | 2.5 | dB | 600 MHz to 1000 MHz |
| | | 2.2 | 2.8 | dB | 1000 MHz to 1218 MHz |
| Input Return Loss | 12 | 14 | | dB | 45 MHz |
| | 12 | 14 | | dB | 45 MHz to 100 MHz |
| | 15 | 17 | | dB | 100 MHz to 400 MHz |
| | 14 | 16 | | dB | 400 MHz to 700 MHz |
| | 12 | 16 | | dB | 700 MHz to 1000 MHz |
| | 11 | 14 | | dB | 1000 MHz to 1218 MHz |
| Amplitude Balance | | 0.3 | 0.5 | dB | 45 MHz to 200 MHz |
| | | 0.4 | 1.0 | dB | 200 MHz to 600 MHz |
| | | 0.4 | 1.0 | dB | 600 MHz to 1000 MHz |
| | | 0.4 | 1.0 | dB | 1000 MHz to 1218 MHz |
| Phase Balance | | 2 | 3 | ° | 45 MHz, Nominal Phase Difference is 180° |
| | | 5 | 10 | ° | 45 MHz to 300 MHz, Nominal Phase Difference is 180° |
| | | 13 | 18 | ° | 300 MHz to 600 MHz, Nominal Phase Difference is 180° |
| | | 20 | 26 | ° | 600 MHz to 1000 MHz, Nominal Phase Difference is 180° |
| | | 21 | 26 | ° | 1000 MHz to 1218 MHz, Nominal Phase Difference is 180° |
| DC Current Capability (in CT) | | | 500 | mA | |
| Impedance Ratio | 1:2.78 | | | | |
| Type – Transmission Line | Balanced to Balanced | | | | |

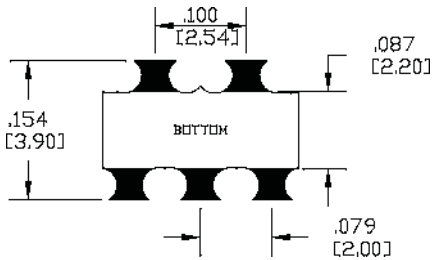
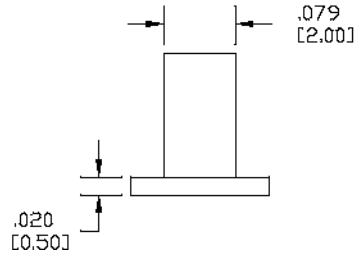
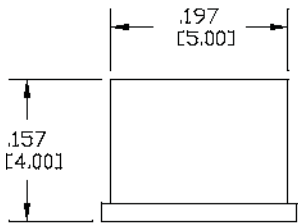
Typical Performance: T=25°C unless otherwise noted



Package Outline, Pin Out and Branding Drawing (Dimensions in inches [millimeters])



PCB FOOTPRINT



RFXF0008

Contact Information

For the latest specifications, additional product information, worldwide sales and distribution locations:

Web: www.rfmd.com **Tel:** 1-844-890-8163
Email: customer.support@qorvo.com

For information about the merger of RFMD and TriQuint as Qorvo:

Web: www.qorvo.com

Important Notice

The information contained herein is believed to be reliable. RFMD makes no warranties regarding the information contained herein. RFMD assumes no responsibility or liability whatsoever for any of the information contained herein. RFMD assumes no responsibility or liability whatsoever for the use of the information contained herein. The information contained herein is provided "AS IS, WHERE IS" and with all faults, and the entire risk associated with such information is entirely with the user. All information contained herein is subject to change without notice. Customers should obtain and verify the latest relevant information before placing orders for RFMD products. The information contained herein or any use of such information does not grant, explicitly or implicitly, to any party any patent rights, licenses, or any other intellectual property rights, whether with regard to such information itself or anything described by such information.

RFMD products are not warranted or authorized for use as critical components in medical, life-saving, or life-sustaining applications, or other applications where a failure would reasonably be expected to cause severe personal injury or death.

Компания «Life Electronics» занимается поставками электронных компонентов импортного и отечественного производства от производителей и со складов крупных дистрибьюторов Европы, Америки и Азии.

С конца 2013 года компания активно расширяет линейку поставок компонентов по направлению коаксиальный кабель, кварцевые генераторы и конденсаторы (керамические, пленочные, электролитические), за счёт заключения дистрибьюторских договоров

Мы предлагаем:

- Конкурентоспособные цены и скидки постоянным клиентам.
- Специальные условия для постоянных клиентов.
- Подбор аналогов.
- Поставку компонентов в любых объемах, удовлетворяющих вашим потребностям.
- Приемлемые сроки поставки, возможна ускоренная поставка.
- Доставку товара в любую точку России и стран СНГ.
- Комплексную поставку.
- Работу по проектам и поставку образцов.
- Формирование склада под заказчика.
- Сертификаты соответствия на поставляемую продукцию (по желанию клиента).
- Тестирование поставляемой продукции.
- Поставку компонентов, требующих военную и космическую приемку.
- Входной контроль качества.
- Наличие сертификата ISO.

В составе нашей компании организован Конструкторский отдел, призванный помогать разработчикам, и инженерам.

Конструкторский отдел помогает осуществить:

- Регистрацию проекта у производителя компонентов.
- Техническую поддержку проекта.
- Защиту от снятия компонента с производства.
- Оценку стоимости проекта по компонентам.
- Изготовление тестовой платы монтаж и пусконаладочные работы.



Тел: +7 (812) 336 43 04 (многоканальный)

Email: org@lifeelectronics.ru