



# STGB7NC60HD, STGF7NC60HD, STGP7NC60HD

N-channel 14 A, 600 V, very fast IGBT with Ultrafast diode

Datasheet – production data

## Features

- Low on-voltage drop ( $V_{CE(sat)}$ )
- Off losses include tail current
- Losses include diode recovery energy
- High frequency operation up to 70 kHz
- Very soft ultra fast recovery anti parallel diode

## Applications

- High frequency inverters
- SMPS and PFC in both hard switch and resonant topologies
- Motor drivers

## Description

These devices are very fast IGBT developed using advanced PowerMESH™ technology. This process guarantees an excellent trade-off between switching performance and low on-state behavior. These devices are well-suited for resonant or soft-switching applications.

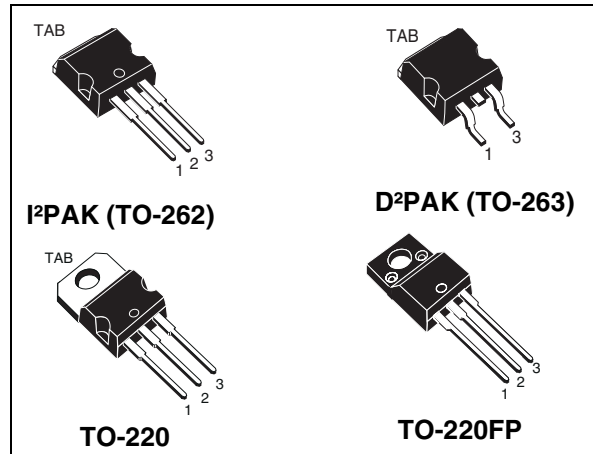


Figure 1. Internal schematic diagram

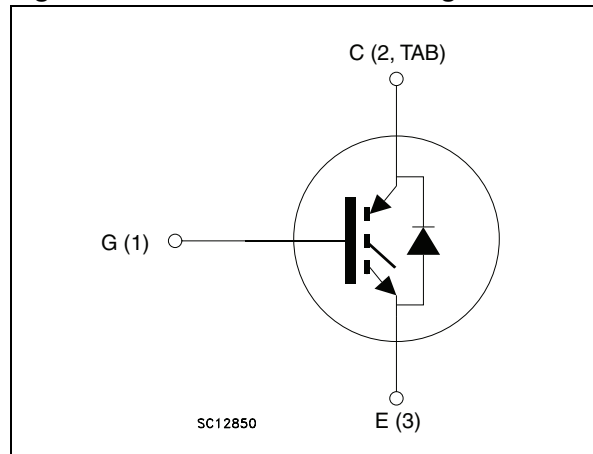


Table 1. Device summary

| Order codes   | Markings  | Packages                    | Packaging     |
|---------------|-----------|-----------------------------|---------------|
| STGB7NC60HD-1 | GB7NC60HD | I <sup>2</sup> PAK (TO-262) | Tube          |
| STGB7NC60HDT4 |           | D <sup>2</sup> PAK (TO-263) | Tape and reel |
| STGF7NC60HD   | GF7NC60HD | TO-220FP                    | Tube          |
| STGP7NC60HD   | GP7NC60HD | TO-220                      | Tube          |

# Contents

|          |   |           |
|----------|---|-----------|
| <b>1</b> | <b>Electrical ratings</b> .....           | <b>3</b>  |
| <b>2</b> | <b>Electrical characteristics</b> .....   | <b>4</b>  |
| 2.1      | Electrical characteristics (curves) ..... | 6         |
| 2.2      | Operating frequency .....                 | 9         |
| <b>3</b> | <b>Test circuits</b> .....                | <b>10</b> |
| <b>4</b> | <b>Package mechanical data</b> .....      | <b>11</b> |
| <b>5</b> | <b>Packaging mechanical data</b> .....    | <b>19</b> |
| <b>6</b> | <b>Revision history</b> .....             | <b>21</b> |

# 1 Electrical ratings

**Table 2. Absolute maximum ratings**

| Symbol                         | Parameter  | Value  |          | Unit |
|--------------------------------|--|--|----------|------|
|                                |  | I <sup>2</sup> PAK, D <sup>2</sup> PAK, TO-220 | TO-220FP |      |
| V <sub>CES</sub>               | Collector-emitter voltage (V <sub>GS</sub> = 0)                          | 600  |          | V    |
| V <sub>ECR</sub>               | Emitter-collector voltage  | 20   |          | V    |
| V <sub>GE</sub>                | Gate-emitter voltage   | ±20  |          | V    |
| I <sub>C</sub>                 | Collector current (continuous) at T <sub>C</sub> = 25 °C <sup>(1)</sup>  | 25   | 10       | A    |
| I <sub>C</sub>                 | Collector current (continuous) at T <sub>C</sub> = 100 °C <sup>(1)</sup> | 14   | 6        | A    |
| I <sub>CM</sub> <sup>(2)</sup> | Collector current (pulsed)   | 50   |          | A    |
| I <sub>F</sub>                 | Diode RMS forward current at T <sub>C</sub> = 25°C                       | 20   |          | A    |
| P <sub>TOT</sub>               | Total dissipation at T <sub>C</sub> = 25°C                               | 80   | 25       | W    |
|                                | Derating factor  | 0.64   | 0.20     | W/°C |
| V <sub>ISO</sub>               | Insulation withstand voltage A.C. (t = 1 sec; T <sub>C</sub> = 25°C)     | --   | 2500     | V    |
| T <sub>stg</sub>               | Storage temperature  | – 55 to 150                                    |          | °C   |
| T <sub>j</sub>                 | Operating junction temperature   |  |          |      |

1. Calculated according to the iterative formula:

$$I_C(T_C) = \frac{T_{j(max)} - T_C}{R_{thj-c} \times V_{CE(sat)(max)}(T_{j(max)}, I_C(T_C))}$$

2. Pulse width limited by maximum junction temperature and turn-off within RBSOA.

**Table 3. Thermal data**

| Symbol            | Parameter                           | Value  |          | Unit |
|-------------------|-------------------------------------|--|----------|------|
|                   |                                     | I <sup>2</sup> PAK, D <sup>2</sup> PAK, TO-220 | TO-220FP |      |
| R <sub>thJC</sub> | Thermal resistance junction-case    | 1.56   | 5.0      | °C/W |
| R <sub>thJA</sub> | Thermal resistance junction-ambient | 62.5   |          | °C/W |

## 2 Electrical characteristics

$T_{CASE} = 25^{\circ}\text{C}$  unless otherwise specified.

**Table 4. Electrical characteristics**

| Symbol        | Parameter                                     | Test conditions   | Min. | Typ.        | Max.      | Unit                |
|---------------|---|---|------|-------------|-----------|---------------------|
| $V_{(BR)CES}$ | Collector-emitter breakdown voltage           | $I_C = 1 \text{ mA}, V_{GE} = 0$  | 600  |             |           | V                   |
| $I_{CES}$     | Collector cut-off current ( $V_{GE} = 0$ )    | $V_{CE} = 600 \text{ V}$<br>$V_{CE} = 600 \text{ V}, T_C = 125^{\circ}\text{C}$                                     |      |             | 10<br>1   | $\mu\text{A}$<br>mA |
| $I_{GES}$     | Gate-emitter leakage current ( $V_{CE} = 0$ ) | $V_{GE} = \pm 20 \text{ V}$   |      |             | $\pm 100$ | nA                  |
| $V_{GE(th)}$  | Gate threshold voltage                        | $V_{CE} = V_{GE}, I_C = 250 \mu\text{A}$  | 3.75 |             | 5.75      | V                   |
| $V_{CE(sat)}$ | Collector-emitter saturation voltage          | $V_{GE} = 15 \text{ V}, I_C = 7 \text{ A}$<br>$V_{GE} = 15 \text{ V}, I_C = 7 \text{ A}, T_C = 125^{\circ}\text{C}$ |      | 1.85<br>1.7 | 2.5       | V<br>V              |

**Table 5. Dynamic**

| Symbol         | Parameter                    | Test conditions  | Min. | Typ. | Max. | Unit |
|----------------|------------------------------|--|------|------|------|------|
| $g_{fs}^{(1)}$ | Forward transconductance     | $V_{CE} = 15 \text{ V}, I_C = 7 \text{ A}$   |      | 4.30 |      | S    |
| $C_{ies}$      | Input capacitance            | $V_{CE} = 25 \text{ V}, f = 1 \text{ MHz},$<br>$V_{GE} = 0$  |      | 720  |      | pF   |
| $C_{oes}$      | Output capacitance           |  |      | 81   |      | pF   |
| $C_{res}$      | Reverse transfer capacitance |  |      | 17   |      | pF   |
| $Q_g$          | Total gate charge            | $V_{CE} = 390 \text{ V}, I_C = 7 \text{ A},$<br>$V_{GE} = 15 \text{ V}$                            |      | 35   | 48   | nC   |
| $Q_{ge}$       | Gate-emitter charge          |  |      | 7    |      | nC   |
| $Q_{gc}$       | Gate-collector charge        |  |      | 16   |      | nC   |
| $I_{CL}$       | Turn-off SOA minimum current | $V_{clamp} = 480 \text{ V}, T_j = 150^{\circ}\text{C}$<br>$R_G = 10 \Omega, V_{GE} = 15 \text{ V}$ | 50   |      |      | A    |

1. Pulsed: Pulse duration= 300  $\mu\text{s}$ , duty cycle 1.5%

**Table 6. Switching on**

| Symbol         | Parameter             | Test conditions  | Min. | Typ. | Max. | Unit             |
|----------------|-----------------------|--|------|------|------|------------------|
| $t_{d(on)}$    | Turn-on delay time    | $V_{CC} = 390 \text{ V}, I_C = 7 \text{ A}$<br>$R_G = 10 \Omega, V_{GE} = 15 \text{ V}$<br>(see <a href="#">Figure 21</a> )                              |      | 18.5 |      | ns               |
| $t_r$          | Current rise time     |  |      | 8.5  |      | ns               |
| $(di/dt)_{on}$ | Turn-on current slope |  |      | 1060 |      | A/ $\mu\text{s}$ |
| $t_{d(on)}$    | Turn-on delay time    | $V_{CC} = 390 \text{ V}, I_C = 7 \text{ A}$<br>$R_G = 10 \Omega, V_{GE} = 15 \text{ V},$<br>$T_j = 125^{\circ}\text{C}$ (see <a href="#">Figure 21</a> ) |      | 18.5 |      | ns               |
| $t_r$          | Current rise time     |  |      | 7    |      | ns               |
| $(di/dt)_{on}$ | Turn-on current slope |  |      | 1000 |      | A/ $\mu\text{s}$ |

**Table 7. Switching off**

| Symbol         | Parameter             | Test conditions  | Min. | Typ. | Max. | Unit |
|----------------|-----------------------|--|------|------|------|------|
| $t_r(V_{off})$ | Off voltage rise time | $V_{CC} = 390\text{ V}$ , $I_C = 7\text{ A}$ ,<br>$R_G = 10\ \Omega$ , $V_{GE} = 15\text{ V}$                                      | -    | 27   | -    | ns   |
| $t_{d(off)}$   | Turn-off delay time   |  |      | 72   |      | ns   |
| $t_f$          | Current fall time     |  |      | 60   |      | ns   |
| $t_r(V_{off})$ | Off voltage rise time | $V_{CC} = 390\text{ V}$ , $I_C = 7\text{ A}$ ,<br>$R_G = 10\ \Omega$ , $V_{GE} = 15\text{ V}$<br>$T_j = 125\text{ }^\circ\text{C}$ | -    | 56   | -    | ns   |
| $t_{d(off)}$   | Turn-off delay time   |  |      | 116  |      | ns   |
| $t_f$          | Current fall time     |  |      | 105  |      | ns   |

**Table 8. Switching energy**

| Symbol          | Parameter                | Test conditions  | Min. | Typ. | Max. | Unit          |
|-----------------|--------------------------|--|------|------|------|---------------|
| $E_{on}^{(1)}$  | Turn-on switching losses | $V_{CC} = 390\text{ V}$ , $I_C = 7\text{ A}$ ,<br>$R_G = 10\ \Omega$ , $V_{GE} = 15\text{ V}$ ,                                      | -    | 95   | 125  | $\mu\text{J}$ |
| $E_{off}^{(2)}$ | Turn-off switching loss  |  |      | 115  | 150  | $\mu\text{J}$ |
| $E_{ts}$        | Total switching loss     |  |      | 210  | 275  | $\mu\text{J}$ |
| $E_{on}^{(1)}$  | Turn-on switching losses | $V_{CC} = 390\text{ V}$ , $I_C = 7\text{ A}$ ,<br>$R_G = 10\ \Omega$ , $V_{GE} = 15\text{ V}$ ,<br>$T_j = 125\text{ }^\circ\text{C}$ | -    | 140  |      | $\mu\text{J}$ |
| $E_{off}^{(2)}$ | Turn-off switching loss  |  |      | 215  |      | $\mu\text{J}$ |
| $E_{ts}$        | Total switching loss     |  |      | 355  |      | $\mu\text{J}$ |

1.  $E_{on}$  is the turn-on losses when a typical diode is used in the test circuit. If the IGBT is offered in a package with a co-pack diode, the co-pack diode is used as external diode. IGBTs and diode are at the same temperature (25°C and 125°C).
2. Turn-off losses include also the tail of the collector current.

**Table 9. Collector-emitter diode**

| Symbol    | Parameter                    | Test conditions  | Min. | Typ.       | Max. | Unit   |
|-----------|------------------------------|--|------|------------|------|--------|
| $V_f$     | Forward on-voltage           | $I_f = 3.5\text{ A}$<br>$I_f = 3.5\text{ A}$ , $T_j = 125\text{ }^\circ\text{C}$                                     | -    | 1.3<br>1.1 | 1.9  | V<br>V |
| $t_{rr}$  | Reverse recovery time        | $I_f = 7\text{ A}$ , $V_R = 40\text{ V}$ ,<br>$di/dt = 100\text{ A}/\mu\text{s}$                                     |      | 37         |      | ns     |
| $t_a$     |                              |  |      | 22         |      | ns     |
| $Q_{rr}$  | Reverse recovery charge      |  |      | 40         |      | nC     |
| $I_{rrm}$ | Reverse recovery current     |  |      | 2.1        |      | A      |
| $S$       | Softness factor of the diode |  |      | 0.68       |      |        |
| $t_{rr}$  | Reverse recovery time        | $I_f = 7\text{ A}$ , $V_R = 40\text{ V}$ ,<br>$T_j = 125\text{ }^\circ\text{C}$ , $di/dt = 100\text{ A}/\mu\text{s}$ |      | 61         |      | ns     |
| $t_a$     |                              |  |      | 34         |      | ns     |
| $Q_{rr}$  | Reverse recovery charge      |  |      | 98         |      | nC     |
| $I_{rrm}$ | Reverse recovery current     |  |      | 3.2        |      | A      |
| $S$       | Softness factor of the diode |  | 0.79 |            |      |        |

## 2.1 Electrical characteristics (curves)

Figure 2. Output characteristics

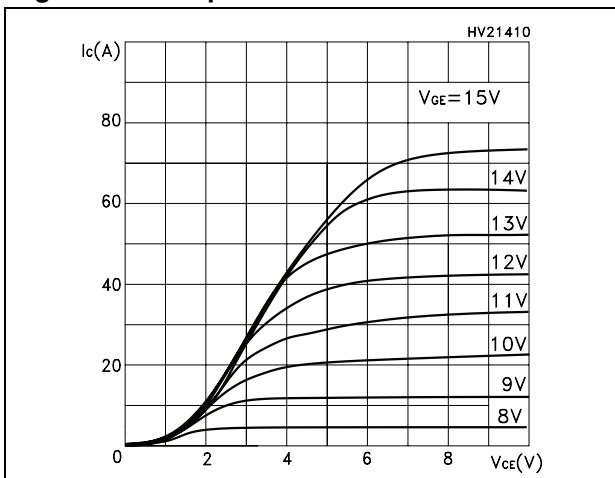


Figure 3. Transfer characteristics

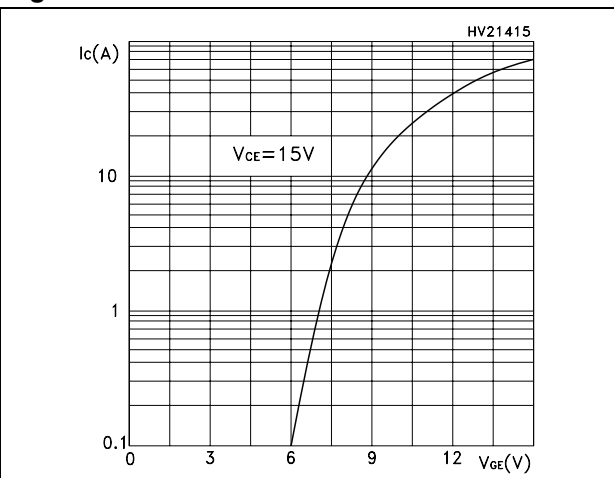


Figure 4. Transconductance

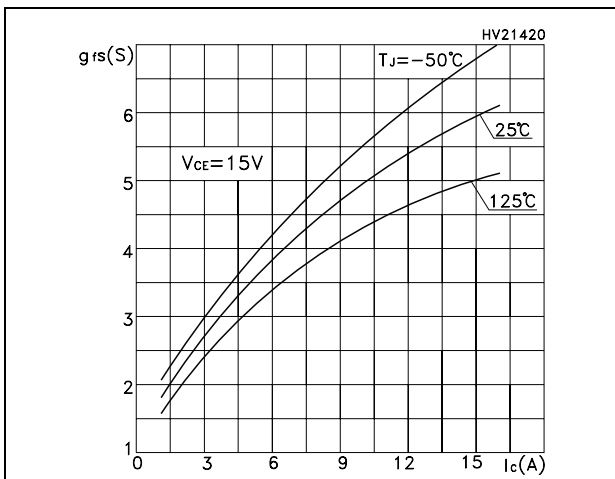


Figure 5. Collector-emitter on voltage vs. temperature

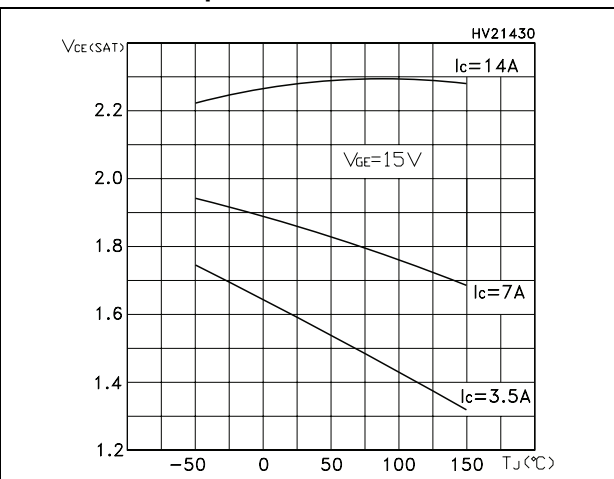


Figure 6. Collector-emitter on voltage vs. collector current

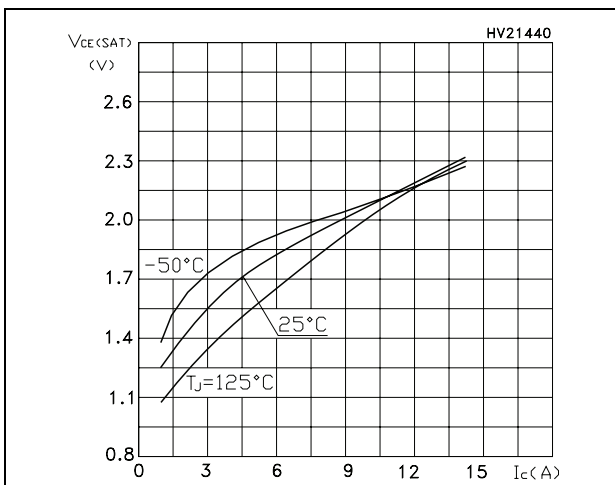
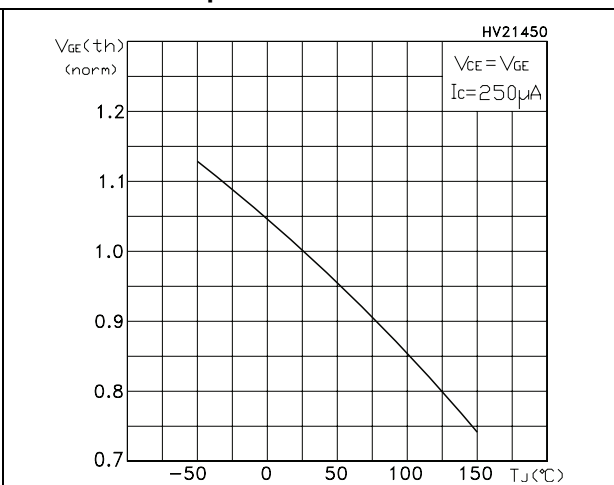
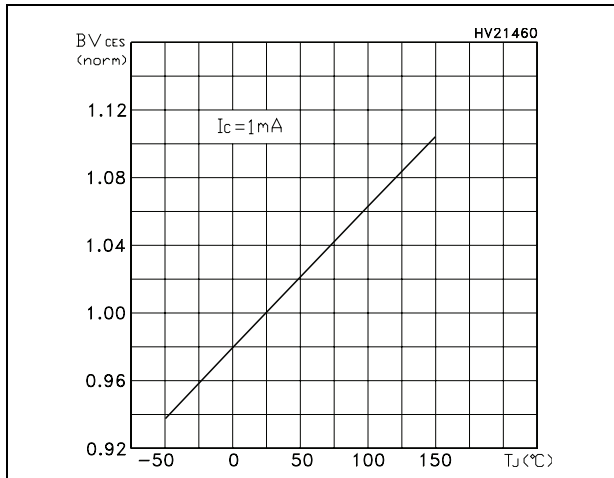


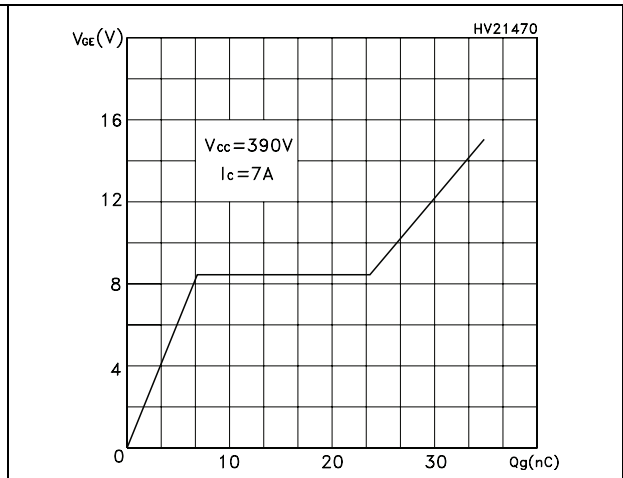
Figure 7. Normalized gate threshold vs. temperature



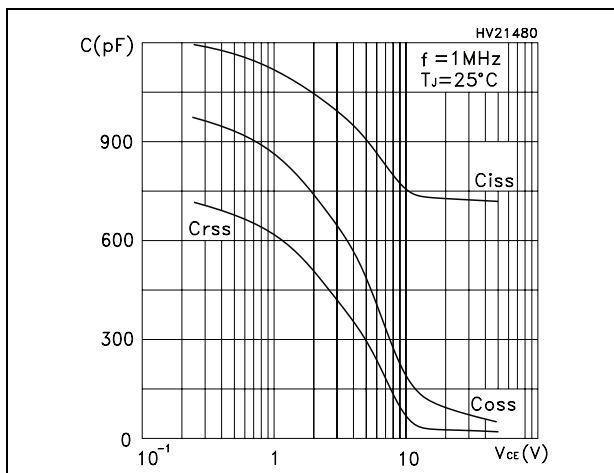
**Figure 8. Normalized breakdown voltage vs temperature**



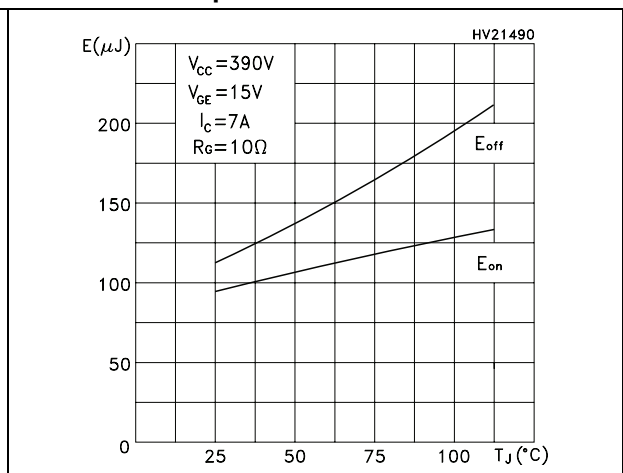
**Figure 9. Gate charge vs. gate-emitter voltage**



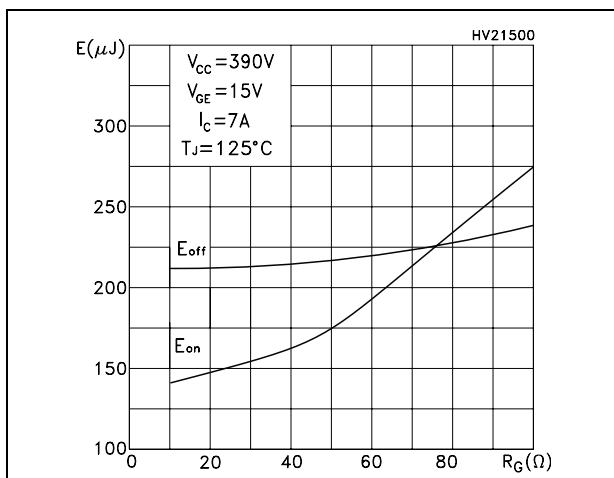
**Figure 10. Capacitance variations**



**Figure 11. Total switching losses vs. temperature**



**Figure 12. Total switching losses vs. gate resistance**



**Figure 13. Total switching losses vs collector current**

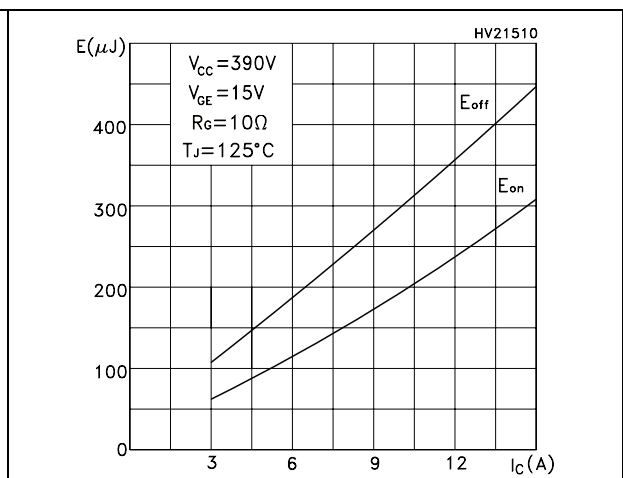


Figure 14. Emitter-collector diode characteristics

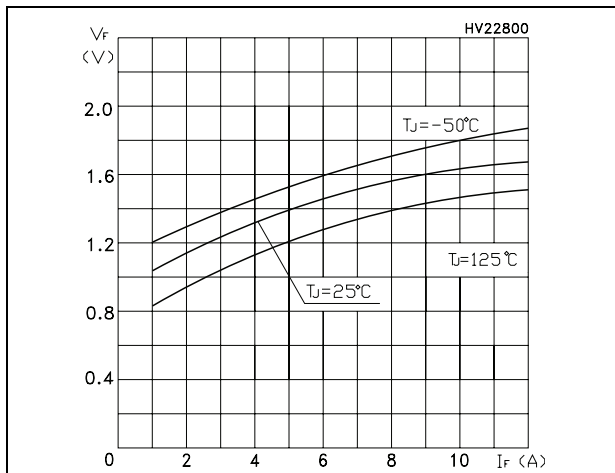


Figure 15. Turn-off SOA

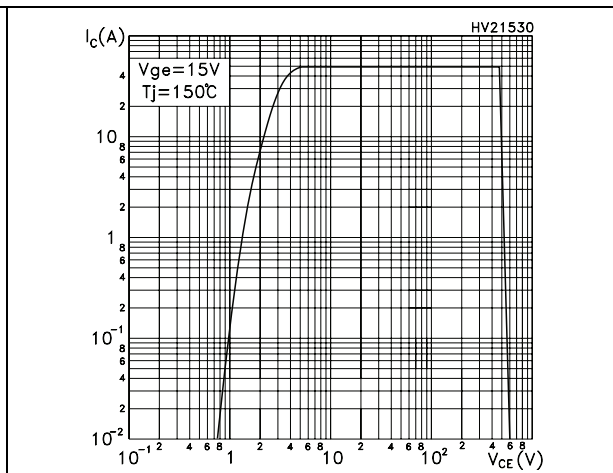


Figure 16. Thermal impedance for I<sup>2</sup>PAK, D<sup>2</sup>PAK and TO-220

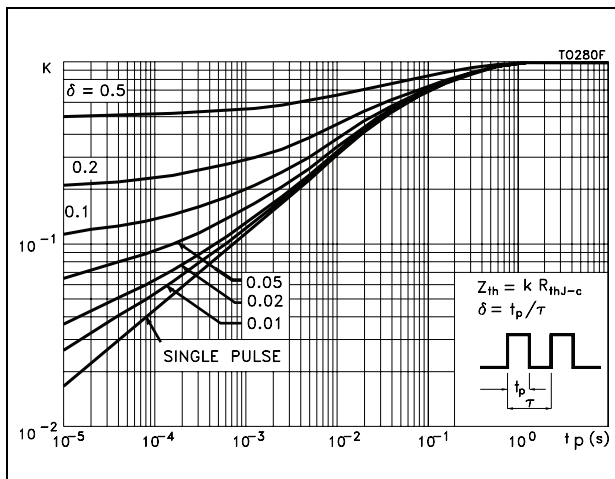
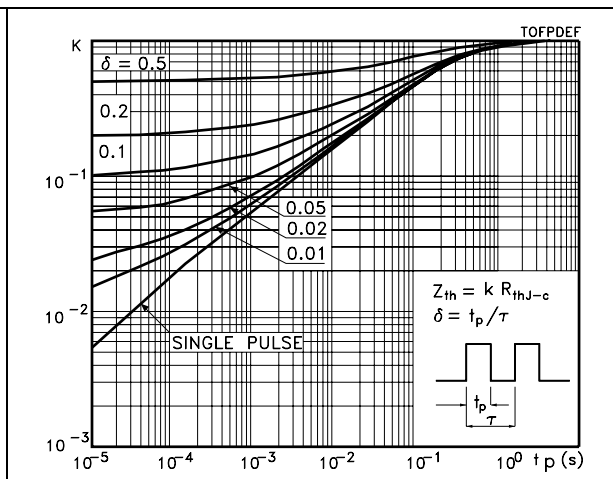


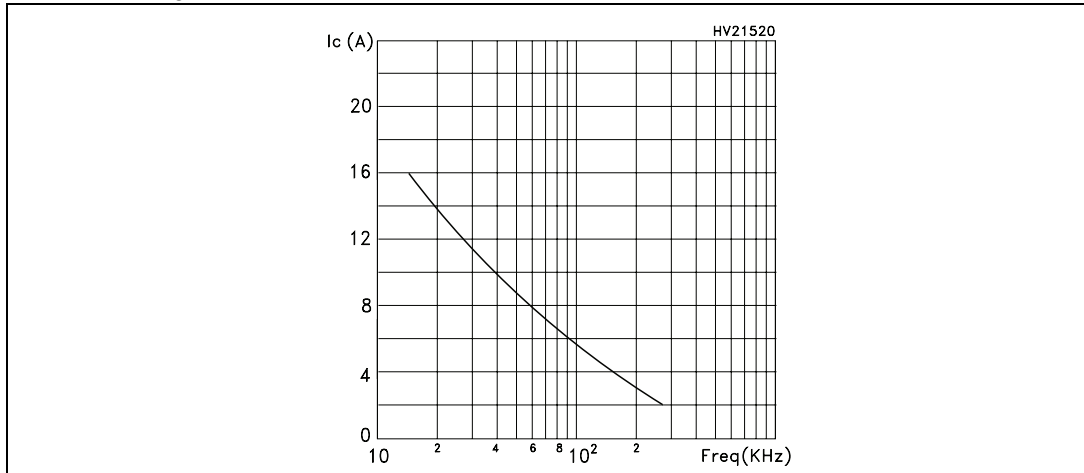
Figure 17. Thermal impedance for TO-220FP





## 2.2 Operating frequency

Figure 18.  $I_C$  vs. frequency



For a fast IGBT suitable for high frequency applications, the typical collector current vs. maximum operating frequency curve is reported. That frequency is defined as follows:

### Equation 1

$$f_{MAX} = (P_D - P_C) / (E_{ON} + E_{OFF})$$

The maximum power dissipation is limited by maximum junction to case thermal resistance:

### Equation 2

$$P_D = \Delta T / R_{THJ-C}$$

considering  $\Delta T = T_J - T_C = 125\text{ }^\circ\text{C} - 75\text{ }^\circ\text{C} = 50\text{ }^\circ\text{C}$

The conduction losses are:

### Equation 3

$$P_C = I_C * V_{CE(SAT)} * \delta$$

with 50% of duty cycle,  $V_{CE(sat)}$  typical value  $T_C = 125\text{ }^\circ\text{C}$ .

Power dissipation during ON & OFF commutations is due to the switching frequency:

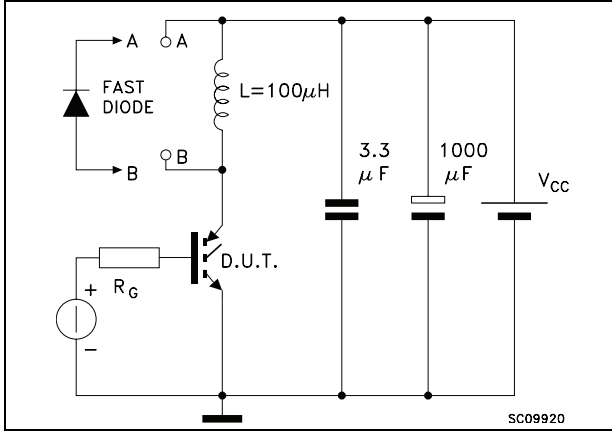
### Equation 4

$$P_{SW} = (E_{ON} + E_{OFF}) * \text{freq.}$$

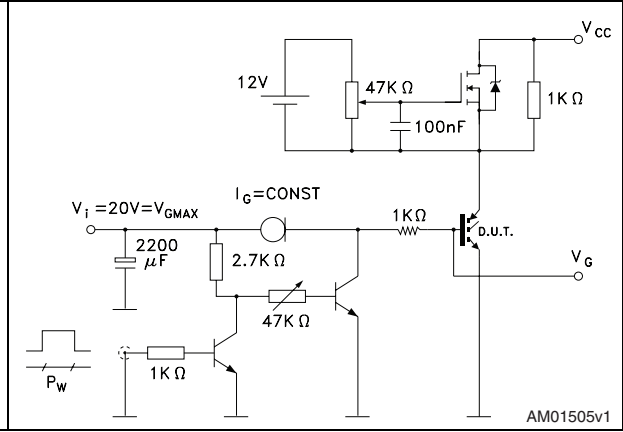
Typical values  $T_C = 125\text{ }^\circ\text{C}$  for switching losses are used (test conditions:  $V_{CE} = 390\text{ V}$ ,  $V_{GE} = 15\text{ V}$ ,  $R_G = 3.3\text{ }\Omega$ ). Furthermore, diode recovery energy is included in the  $E_{ON}$ , while the tail of the collector current is included in the  $E_{OFF}$  measurements.

### 3 Test circuits

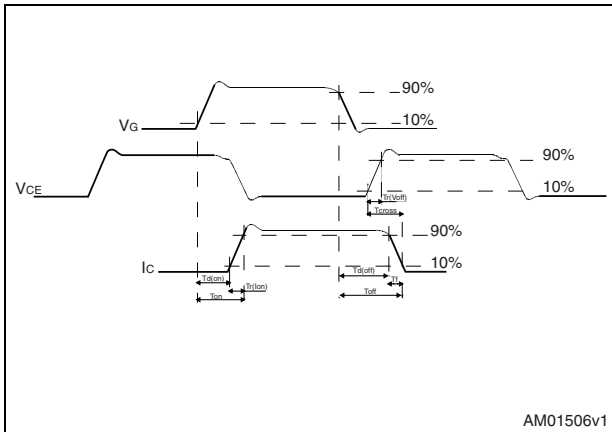
**Figure 19. Test circuit for inductive load switching**



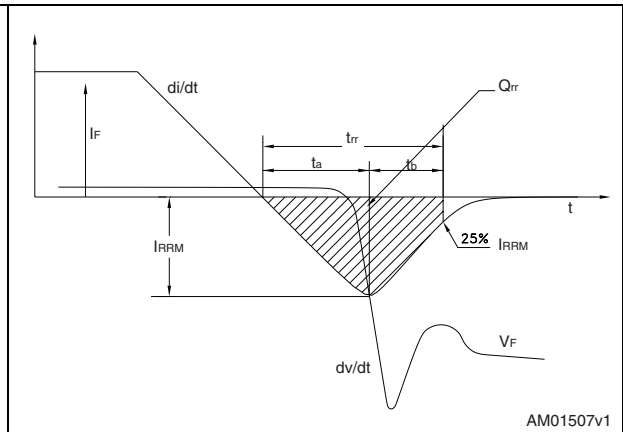
**Figure 20. Gate charge test circuit**



**Figure 21. Switching waveform**



**Figure 22. Diode recovery time waveform**



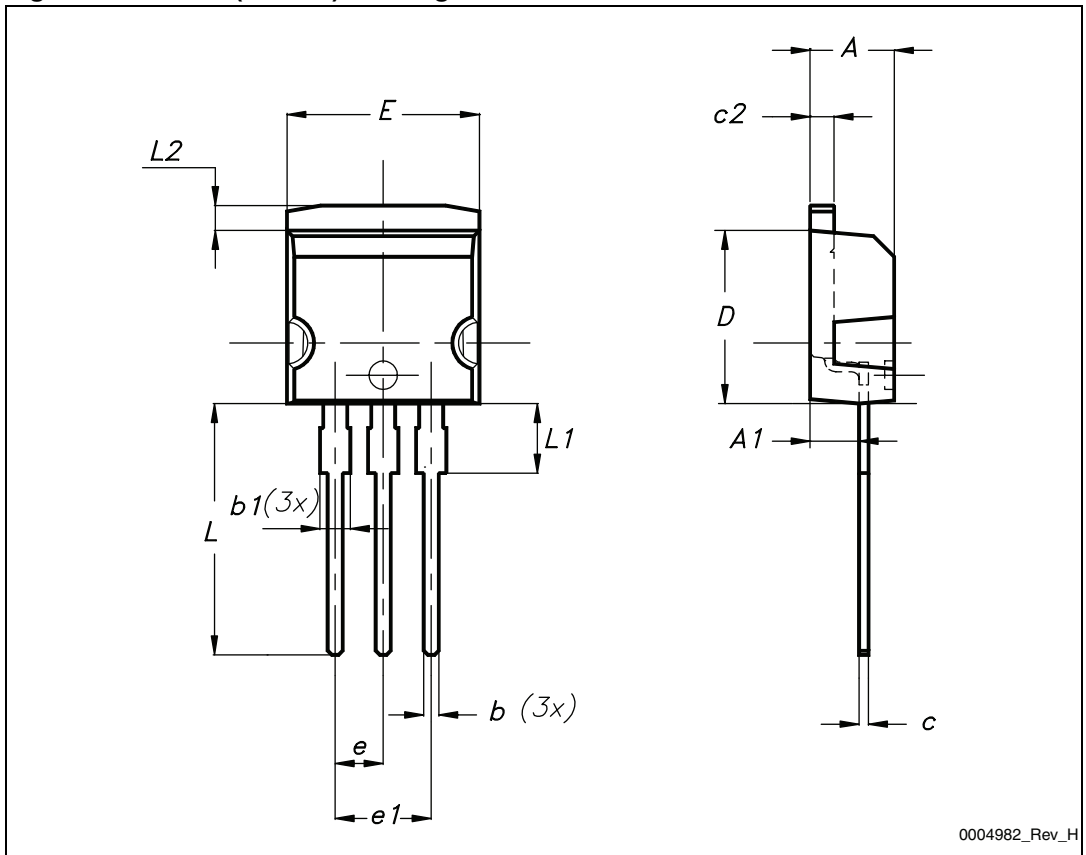
## 4 Package mechanical data

In order to meet environmental requirements, ST offers these devices in different grades of ECOPACK® packages, depending on their level of environmental compliance. ECOPACK® specifications, grade definitions and product status are available at: [www.st.com](http://www.st.com). ECOPACK is an ST trademark.

**Table 10. I<sup>2</sup>PAK (TO-262) mechanical data**

| Dim. | mm.  |      |       |
|------|------|------|-------|
|      | Min. | Typ. | Max.  |
| A    | 4.40 |      | 4.60  |
| A1   | 2.40 |      | 2.72  |
| b    | 0.61 |      | 0.88  |
| b1   | 1.14 |      | 1.70  |
| c    | 0.49 |      | 0.70  |
| c2   | 1.23 |      | 1.32  |
| D    | 8.95 |      | 9.35  |
| e    | 2.40 |      | 2.70  |
| e1   | 4.95 |      | 5.15  |
| E    | 10   |      | 10.40 |
| L    | 13   |      | 14    |
| L1   | 3.50 |      | 3.93  |
| L2   | 1.27 |      | 1.40  |

Figure 23. I<sup>2</sup>PAK (TO-262) drawing



0004982\_Rev\_H

Table 11. D<sup>2</sup>PAK (TO-263) mechanical data

| Dim. | mm   |      |       |
|------|------|------|-------|
|      | Min. | Typ. | Max.  |
| A    | 4.40 |      | 4.60  |
| A1   | 0.03 |      | 0.23  |
| b    | 0.70 |      | 0.93  |
| b2   | 1.14 |      | 1.70  |
| c    | 0.45 |      | 0.60  |
| c2   | 1.23 |      | 1.36  |
| D    | 8.95 |      | 9.35  |
| D1   | 7.50 |      |       |
| E    | 10   |      | 10.40 |
| E1   | 8.50 |      |       |
| e    |      | 2.54 |       |
| e1   | 4.88 |      | 5.28  |
| H    | 15   |      | 15.85 |
| J1   | 2.49 |      | 2.69  |
| L    | 2.29 |      | 2.79  |
| L1   | 1.27 |      | 1.40  |
| L2   | 1.30 |      | 1.75  |
| R    |      | 0.4  |       |
| V2   | 0°   |      | 8°    |

Figure 24. D<sup>2</sup>PAK (TO-263) drawing

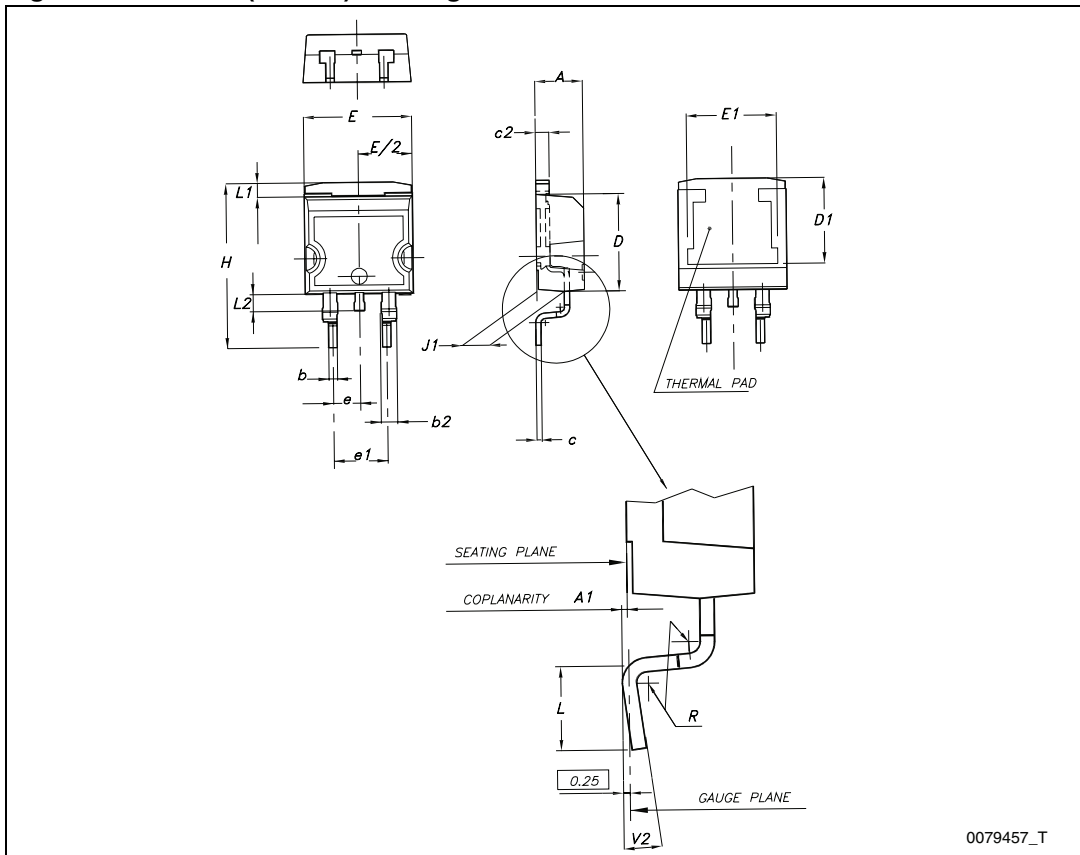
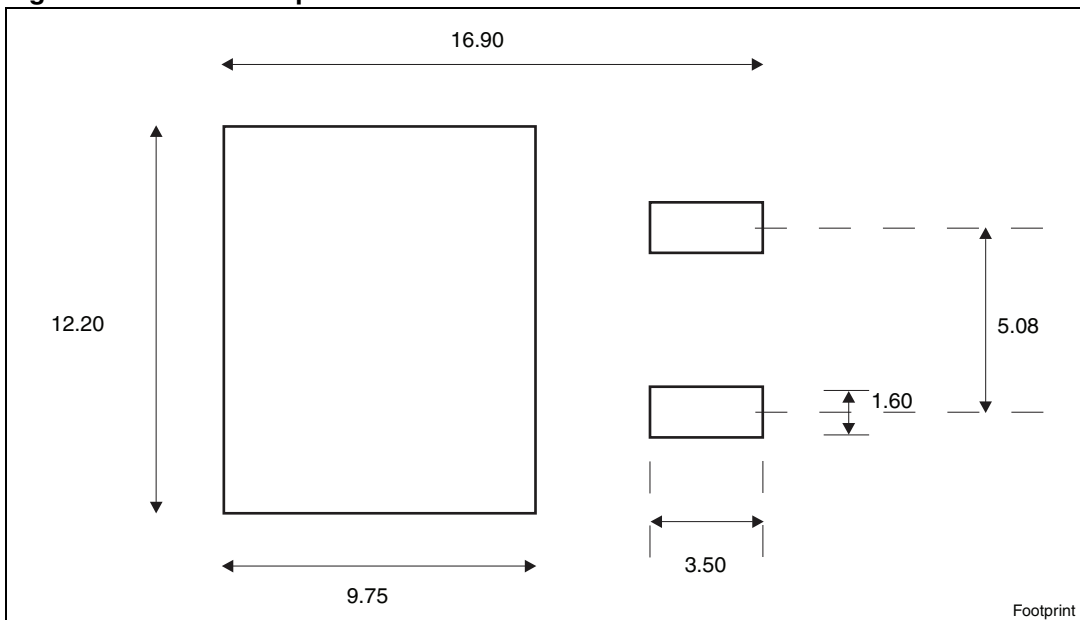


Figure 25. D<sup>2</sup>PAK footprint<sup>(a)</sup>

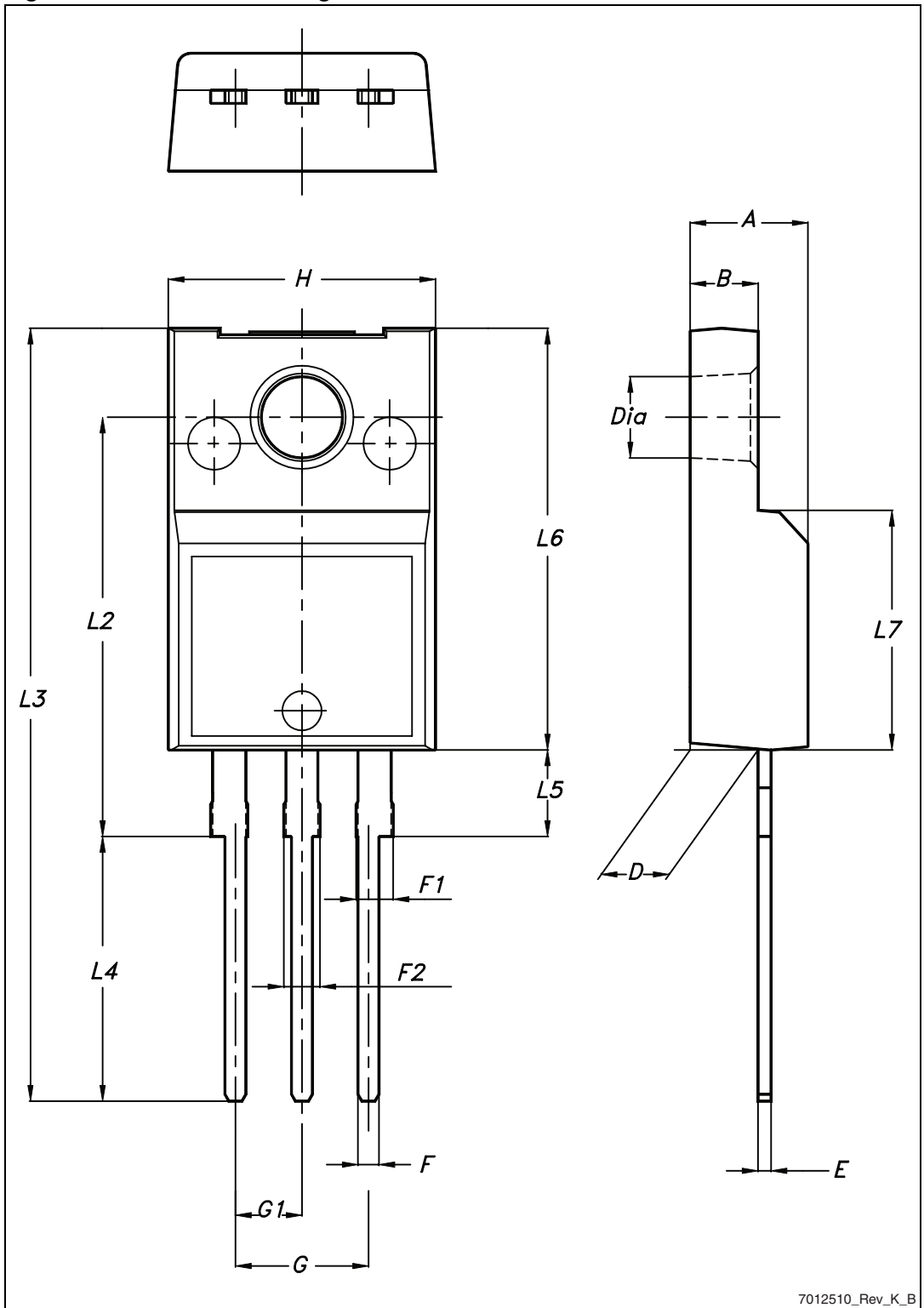


a. All dimensions are in millimeters

Table 12. TO-220FP mechanical data

| Dim. | mm   |      |      |
|------|------|------|------|
|      | Min. | Typ. | Max. |
| A    | 4.4  |      | 4.6  |
| B    | 2.5  |      | 2.7  |
| D    | 2.5  |      | 2.75 |
| E    | 0.45 |      | 0.7  |
| F    | 0.75 |      | 1    |
| F1   | 1.15 |      | 1.70 |
| F2   | 1.15 |      | 1.70 |
| G    | 4.95 |      | 5.2  |
| G1   | 2.4  |      | 2.7  |
| H    | 10   |      | 10.4 |
| L2   |      | 16   |      |
| L3   | 28.6 |      | 30.6 |
| L4   | 9.8  |      | 10.6 |
| L5   | 2.9  |      | 3.6  |
| L6   | 15.9 |      | 16.4 |
| L7   | 9    |      | 9.3  |
| Dia  | 3    |      | 3.2  |

Figure 26. TO-220FP drawing



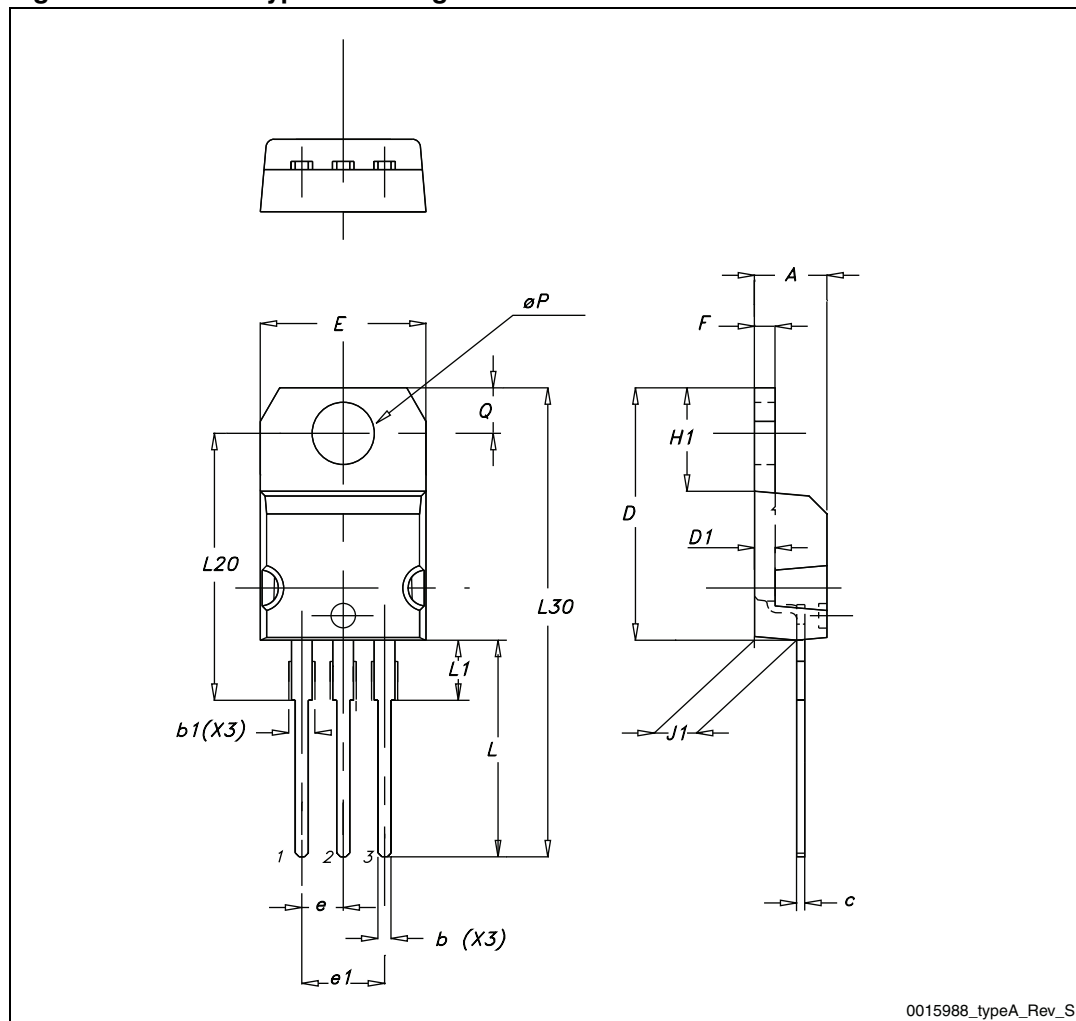
7012510\_Rev\_K\_B



Table 13. TO-220 type A mechanical data

| Dim. | mm    |       |       |
|------|-------|-------|-------|
|      | Min.  | Typ.  | Max.  |
| A    | 4.40  |       | 4.60  |
| b    | 0.61  |       | 0.88  |
| b1   | 1.14  |       | 1.70  |
| c    | 0.48  |       | 0.70  |
| D    | 15.25 |       | 15.75 |
| D1   |       | 1.27  |       |
| E    | 10    |       | 10.40 |
| e    | 2.40  |       | 2.70  |
| e1   | 4.95  |       | 5.15  |
| F    | 1.23  |       | 1.32  |
| H1   | 6.20  |       | 6.60  |
| J1   | 2.40  |       | 2.72  |
| L    | 13    |       | 14    |
| L1   | 3.50  |       | 3.93  |
| L20  |       | 16.40 |       |
| L30  |       | 28.90 |       |
| ØP   | 3.75  |       | 3.85  |
| Q    | 2.65  |       | 2.95  |

Figure 27. TO-220 type A drawing

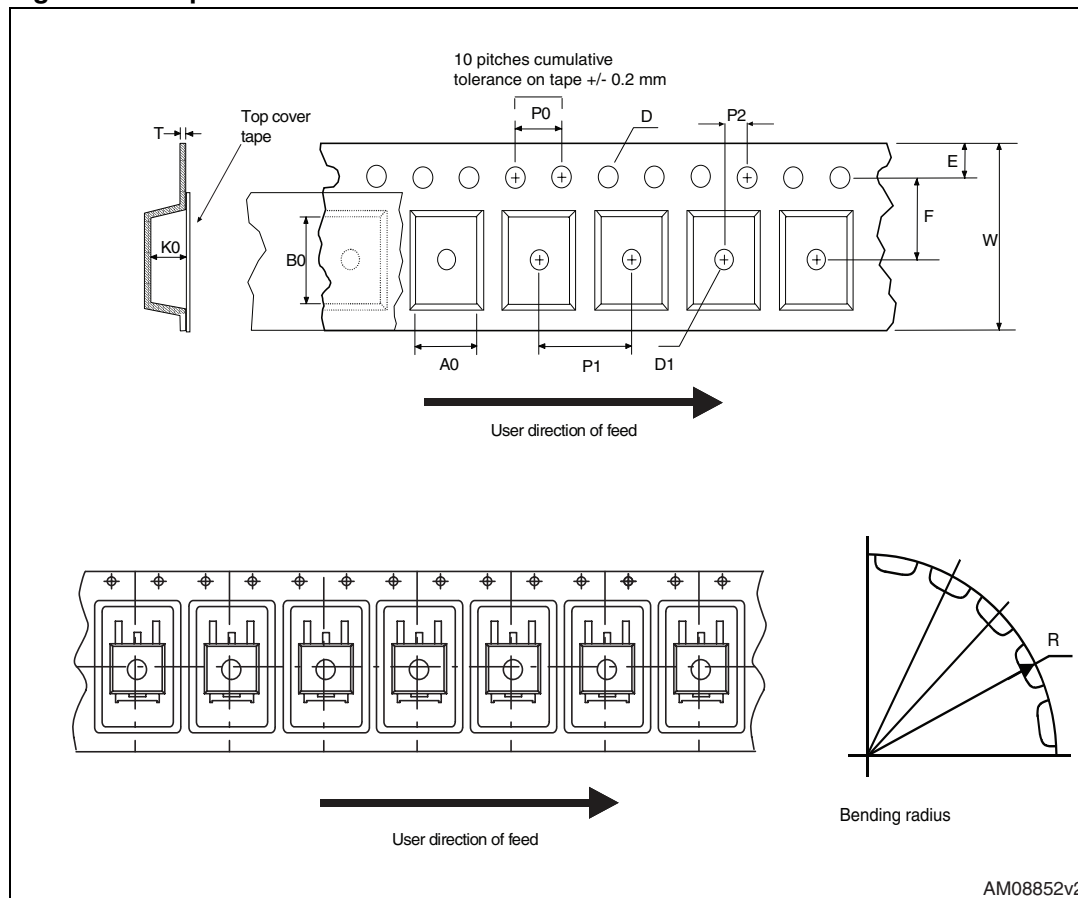


## 5 Packaging mechanical data

Table 14. D<sup>2</sup>PAK (TO-263) tape and reel mechanical data

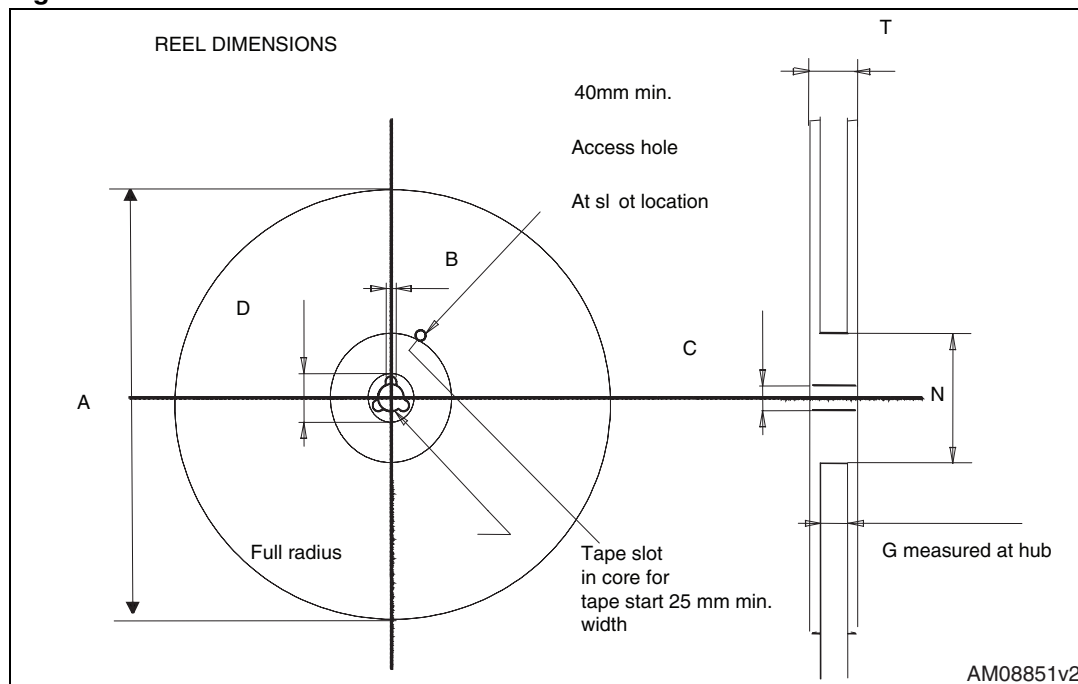
| Tape |      |      | Reel |          |      |
|------|------|------|------|----------|------|
| Dim. | mm   |      | Dim. | mm       |      |
|      | Min. | Max. |      | Min.     | Max. |
| A0   | 10.5 | 10.7 | A    |          | 330  |
| B0   | 15.7 | 15.9 | B    | 1.5      |      |
| D    | 1.5  | 1.6  | C    | 12.8     | 13.2 |
| D1   | 1.59 | 1.61 | D    | 20.2     |      |
| E    | 1.65 | 1.85 | G    | 24.4     | 26.4 |
| F    | 11.4 | 11.6 | N    | 100      |      |
| K0   | 4.8  | 5.0  | T    |          | 30.4 |
| P0   | 3.9  | 4.1  |      |          |      |
| P1   | 11.9 | 12.1 |      | Base qty | 1000 |
| P2   | 1.9  | 2.1  |      | Bulk qty | 1000 |
| R    | 50   |      |      |          |      |
| T    | 0.25 | 0.35 |      |          |      |
| W    | 23.7 | 24.3 |      |          |      |

Figure 28. Tape



AM08852v2

Figure 29. Reel



AM08851v2

## 6 Revision history

**Table 15. Document revision history**

| Date        | Revision | Changes  |
|-------------|----------|--|
| 07-Jun-2004 | 4        | Stylesheet update. No content change.                        |
| 19-Aug-2004 | 5        | Complete version   |
| 17-Sep-2004 | 6        | <i>Figure 14</i> has been added                              |
| 09-Nov-2004 | 7        | Final datasheet  |
| 19-Jan-2005 | 8        | Datasheet updated  |
| 09-Jun-2005 | 9        | Modified title   |
| 27-Jun-2012 | 10       | Inserted commercial type STGB7NC60HD.<br>Minor text changes. |

**Please Read Carefully:**

Information in this document is provided solely in connection with ST products. STMicroelectronics NV and its subsidiaries ("ST") reserve the right to make changes, corrections, modifications or improvements, to this document, and the products and services described herein at any time, without notice.

All ST products are sold pursuant to ST's terms and conditions of sale.

Purchasers are solely responsible for the choice, selection and use of the ST products and services described herein, and ST assumes no liability whatsoever relating to the choice, selection or use of the ST products and services described herein.

No license, express or implied, by estoppel or otherwise, to any intellectual property rights is granted under this document. If any part of this document refers to any third party products or services it shall not be deemed a license grant by ST for the use of such third party products or services, or any intellectual property contained therein or considered as a warranty covering the use in any manner whatsoever of such third party products or services or any intellectual property contained therein.

**UNLESS OTHERWISE SET FORTH IN ST'S TERMS AND CONDITIONS OF SALE ST DISCLAIMS ANY EXPRESS OR IMPLIED WARRANTY WITH RESPECT TO THE USE AND/OR SALE OF ST PRODUCTS INCLUDING WITHOUT LIMITATION IMPLIED WARRANTIES OF MERCHANTABILITY, FITNESS FOR A PARTICULAR PURPOSE (AND THEIR EQUIVALENTS UNDER THE LAWS OF ANY JURISDICTION), OR INFRINGEMENT OF ANY PATENT, COPYRIGHT OR OTHER INTELLECTUAL PROPERTY RIGHT.**

**UNLESS EXPRESSLY APPROVED IN WRITING BY TWO AUTHORIZED ST REPRESENTATIVES, ST PRODUCTS ARE NOT RECOMMENDED, AUTHORIZED OR WARRANTED FOR USE IN MILITARY, AIR CRAFT, SPACE, LIFE SAVING, OR LIFE SUSTAINING APPLICATIONS, NOR IN PRODUCTS OR SYSTEMS WHERE FAILURE OR MALFUNCTION MAY RESULT IN PERSONAL INJURY, DEATH, OR SEVERE PROPERTY OR ENVIRONMENTAL DAMAGE. ST PRODUCTS WHICH ARE NOT SPECIFIED AS "AUTOMOTIVE GRADE" MAY ONLY BE USED IN AUTOMOTIVE APPLICATIONS AT USER'S OWN RISK.**

Resale of ST products with provisions different from the statements and/or technical features set forth in this document shall immediately void any warranty granted by ST for the ST product or service described herein and shall not create or extend in any manner whatsoever, any liability of ST.

ST and the ST logo are trademarks or registered trademarks of ST in various countries.

Information in this document supersedes and replaces all information previously supplied.

The ST logo is a registered trademark of STMicroelectronics. All other names are the property of their respective owners.

© 2012 STMicroelectronics - All rights reserved

STMicroelectronics group of companies

Australia - Belgium - Brazil - Canada - China - Czech Republic - Finland - France - Germany - Hong Kong - India - Israel - Italy - Japan - Malaysia - Malta - Morocco - Philippines - Singapore - Spain - Sweden - Switzerland - United Kingdom - United States of America

[www.st.com](http://www.st.com)

Компания «Life Electronics» занимается поставками электронных компонентов импортного и отечественного производства от производителей и со складов крупных дистрибьюторов Европы, Америки и Азии.

С конца 2013 года компания активно расширяет линейку поставок компонентов по направлению коаксиальный кабель, кварцевые генераторы и конденсаторы (керамические, пленочные, электролитические), за счёт заключения дистрибьюторских договоров

Мы предлагаем:

- Конкурентоспособные цены и скидки постоянным клиентам.
- Специальные условия для постоянных клиентов.
- Подбор аналогов.
- Поставку компонентов в любых объемах, удовлетворяющих вашим потребностям.
- Приемлемые сроки поставки, возможна ускоренная поставка.
- Доставку товара в любую точку России и стран СНГ.
- Комплексную поставку.
- Работу по проектам и поставку образцов.
- Формирование склада под заказчика.
- Сертификаты соответствия на поставляемую продукцию (по желанию клиента).
- Тестирование поставляемой продукции.
- Поставку компонентов, требующих военную и космическую приемку.
- Входной контроль качества.
- Наличие сертификата ISO.

В составе нашей компании организован Конструкторский отдел, призванный помогать разработчикам, и инженерам.

Конструкторский отдел помогает осуществить:

- Регистрацию проекта у производителя компонентов.
- Техническую поддержку проекта.
- Защиту от снятия компонента с производства.
- Оценку стоимости проекта по компонентам.
- Изготовление тестовой платы монтаж и пусконаладочные работы.



Тел: +7 (812) 336 43 04 (многоканальный)

Email: [org@lifeelectronics.ru](mailto:org@lifeelectronics.ru)