

Voice Guidance LSI

■ Overview

The S1V3034x Series range of LSIs incorporates high-compression, high-quality audio decoding functions, audio data ROM, and DA converters, make it ideal for use in voice guidance products. The voice data creation tool for EPSON voice guidance LSI allows easy creation of high-quality voice data from text data without studio recording. Three audio data ROM sizes are available to suit specific needs. These LSIs allow audio data to be transferred from a host when additional audio data is required. All functions are controlled by commands via a serial interface for easy addition to any existing system incorporating a host. The S1V3034x series offers pin compatibility^(*) with the S1V3S344 and S1V3G340, facilitating substitution to suit system configurations.

The S1V3034x Series will help users reduce time-to-market for products incorporating built-in voice guidance functions.

* S1V3S344 and S1V3G340 differs in external parts from S1V3034x series.

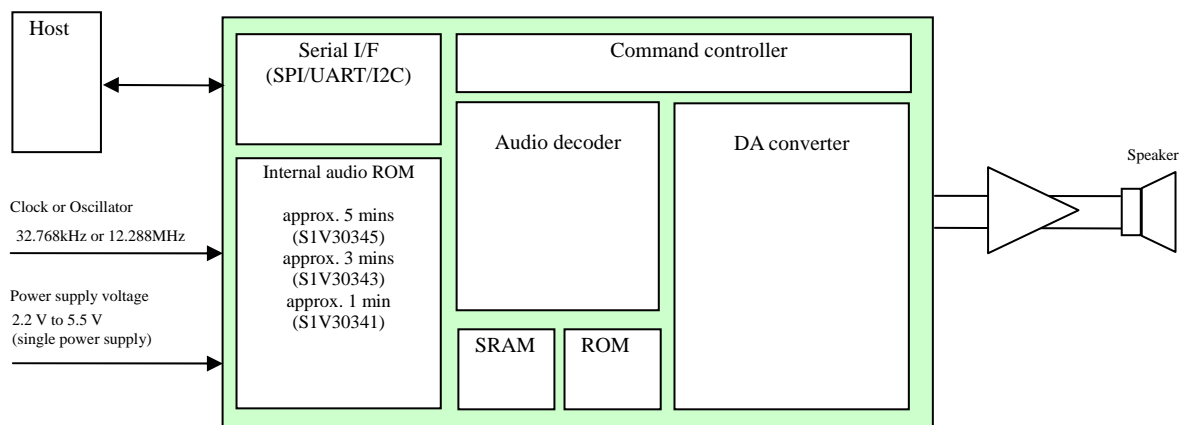
■ Features

- **Audio playback**
 - High-compression, high-quality audio decoder (proprietary Epson data format)
 - Bitrate: 40 kbps, 32 kbps, 24 kbps, 16 kbps
 - Sampling rate: 16 kHz
- **Sequencer function (phrase interval setting)**
 - Sequence setting for up to 64 phrases (unlimited combinations)
 - Variable phrase interval delay setting: 0 ms or 20 ms to 2,047 ms (in 1 ms steps)
- **Built-in audio data ROM**
 - The following areas are reserved internally for audio data.
 - S1V30345: 640 Kbytes (approx. 5 mins/16 kbps)
 - S1V30343: 384 Kbytes (approx. 3 mins/16 kbps)
 - S1V30341: 128 Kbytes (approx. 1 min/16 kbps)
- **Host interface**
 - Synchronized serial interface (SPI), supporting UART and I2C
 - Command control
- **High-quality 16-bit DA converter**
 - Sampling rate (f_s): 16 kHz
 - Input bits: 16 bits
- **Clock**
 - Clock input: 32.768 kHz or 12.288 MHz
 - Crystal or ceramic oscillator: 32.768 kHz or 12.288 MHz
- **Package**
 - QFP-52pin (10 mm x 10 mm) 0.65 mm pin pitch
 - QFP-48pin (7 mm x 7 mm) 0.5 mm pin pitch
- **Power supply voltage**
 - 2.2 V to 5.5 V (Single power supply)

■ Standard application system

The S1V3034x Series standard application system is configured as shown in the diagram below. The S1V3034x Series is command-controlled by the host using a messaging protocol via the serial interface.

Controlled by commands sent from the host via the serial interface after power-on resetting, the S1V3034x Series outputs voice audio while internally decoding and processing internal or streamed (via host command transfer) compressed audio data.



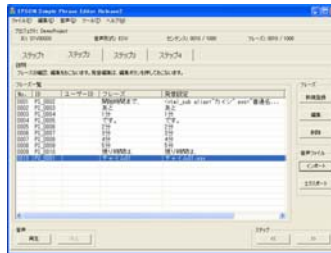
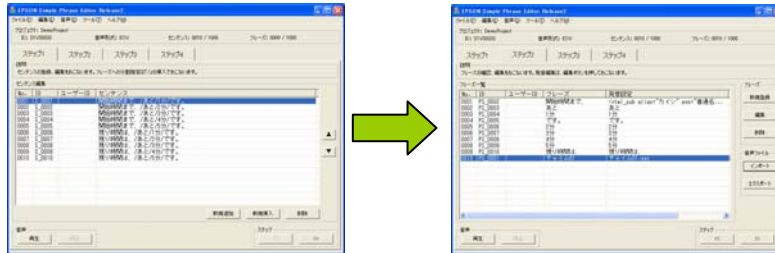
S1V30345/343/341

■ Development Tools

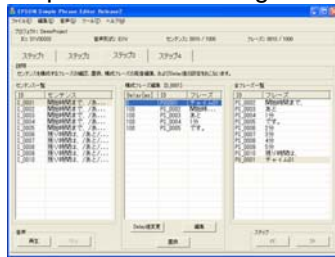
- Evaluation board
- Voice data creation tool for EPSON voice guidance LSI^{*1}
- Sample programs

[Overview of voice data creation tool]

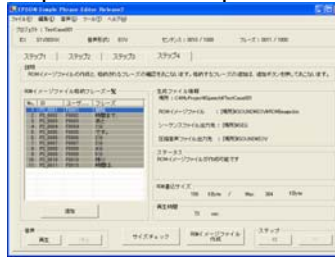
Step.1: Voice guidance registration Step.2: Pronunciation editing



Step.3: Phrase editing



Step.4: ROM data production



- Supported languages: Japanese, English, Korean (all female voices)
In planning stage : Spanish, Chinese

*1 The audio data creation tool uses PENTAX "VoiceText" voice synthesis technology. "VoiceText" is a registered trademark of Voiceware Co., Ltd. Companies and product names included here are registered trademarks or trademarks.

NOTICE:

No part of this material may be reproduced or duplicated in any form or by any means without the written permission of Seiko Epson. Seiko Epson reserves the right to make changes to this material without notice. Seiko Epson does not assume any liability of any kind arising out of any inaccuracies contained in this material or due to its application or use in any product or circuit and, further, there is no representation that this material is applicable to products requiring high level reliability, such as, medical products. Moreover, no license to any intellectual property rights is granted by implication or otherwise, and there is no representation or warranty that anything made in accordance with this material will be free from any patent or copyright infringement of a third party. This material or portions thereof may contain technology or the subject relating to strategic products under the control of the Foreign Exchange and Foreign Trade Law of Japan and may require an export license from the Ministry of Economy, Trade and Industry or other approval from another government agency.

©Seiko Epson Corporation 2009, All rights reserved.

SEIKO EPSON CORPORATION

SEMICONDUCTOR OPERATIONS DIVISION

IC Sales Department

IC International Sales Group

421-8 Hino, Hino-shi, Tokyo 191-8501, JAPAN

Phone: +81-42-587-5814 FAX: +81-42-587-5117

■ EPSON Electronic devices Website

http://www.epson.jp/device/semicon_e/

Document code: 411518901
First issue August, 2008
Revised February, 2009 in Japan

Mouser Electronics

Authorized Distributor

Click to View Pricing, Inventory, Delivery & Lifecycle Information:

Epson:

[S5U1V30340E0100](#)

Компания «Life Electronics» занимается поставками электронных компонентов импортного и отечественного производства от производителей и со складов крупных дистрибьюторов Европы, Америки и Азии.

С конца 2013 года компания активно расширяет линейку поставок компонентов по направлению коаксиальный кабель, кварцевые генераторы и конденсаторы (керамические, пленочные, электролитические), за счёт заключения дистрибьюторских договоров

Мы предлагаем:

- Конкурентоспособные цены и скидки постоянным клиентам.
- Специальные условия для постоянных клиентов.
- Подбор аналогов.
- Поставку компонентов в любых объемах, удовлетворяющих вашим потребностям.
- Приемлемые сроки поставки, возможна ускоренная поставка.
- Доставку товара в любую точку России и стран СНГ.
- Комплексную поставку.
- Работу по проектам и поставку образцов.
- Формирование склада под заказчика.
- Сертификаты соответствия на поставляемую продукцию (по желанию клиента).
- Тестирование поставляемой продукции.
- Поставку компонентов, требующих военную и космическую приемку.
- Входной контроль качества.
- Наличие сертификата ISO.

В составе нашей компании организован Конструкторский отдел, призванный помогать разработчикам, и инженерам.

Конструкторский отдел помогает осуществить:

- Регистрацию проекта у производителя компонентов.
- Техническую поддержку проекта.
- Защиту от снятия компонента с производства.
- Оценку стоимости проекта по компонентам.
- Изготовление тестовой платы монтаж и пусконаладочные работы.



Тел: +7 (812) 336 43 04 (многоканальный)
Email: org@lifeelectronics.ru