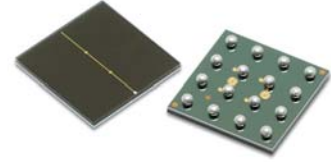


# AFBR-S4N44C013

## 4×4 NUV-HD Silicon Photo Multiplier Array

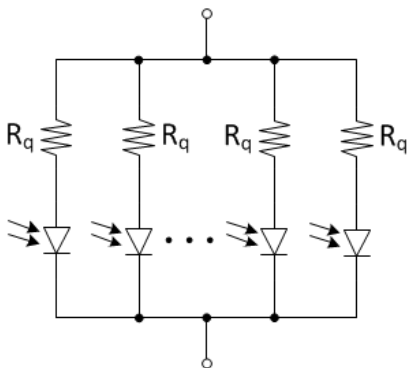


### Description

The Broadcom® AFBR-S4N44C013 is a silicon photo multiplier (SiPM) array used for ultra-sensitive precision measurement of single photons. The active area is  $3.72 \times 3.72 \text{ mm}^2$ . High packing density of the single chip is achieved using through-silicon-via (TSV) technology. Larger areas can be covered by tiling multiple AFBR-S4N44C013 arrays almost without any edge losses. The passivation layer is made by a glass highly transparent down to UV wavelengths, resulting in a broad response in the visible light spectrum with high sensitivity towards blue- and near-UV region of the light spectrum. The SiPM is best suited for the detection of low-level pulsed light sources, especially for detection of Cherenkov- or scintillation light from the most common organic (plastic) and inorganic scintillator materials (for example, LSO, LYSO, BGO, NaI, CsI, BaF, LaBr). This product is lead free and compliant with RoHS and REACH.

### Block Diagram

Figure 1: AFBR-S4N44C013 Block Diagram



### Features

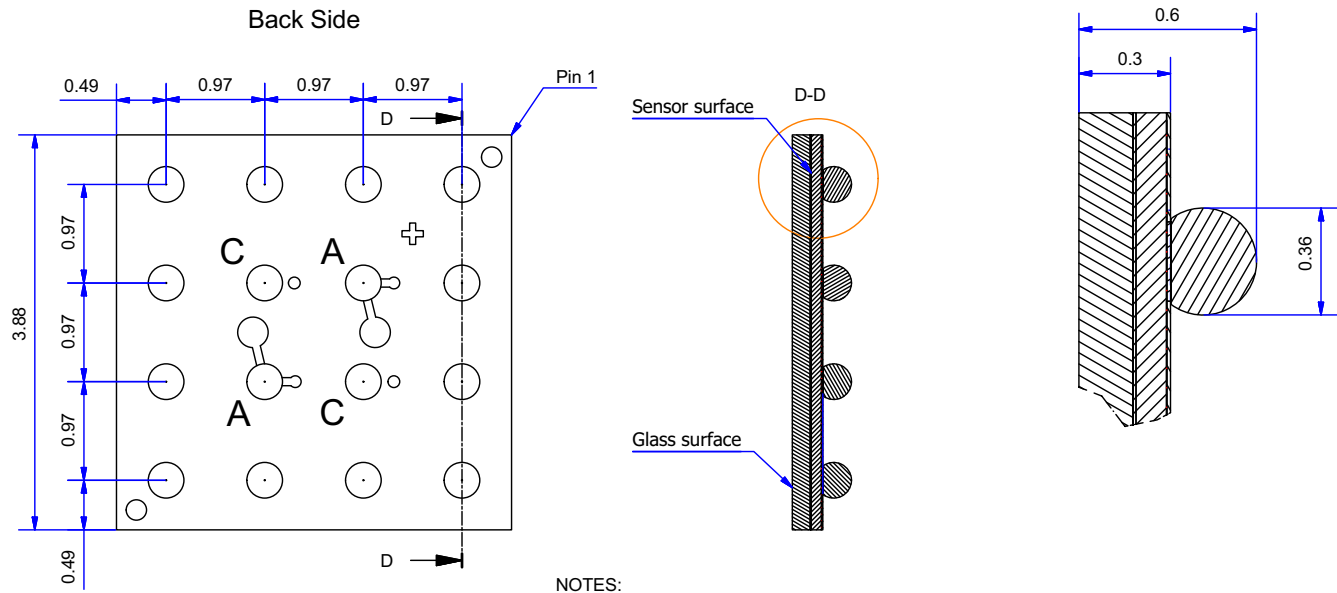
- High PDE of more than 55% at 420 nm
- High fill factors
- Excellent SPTR and CRT
- Excellent uniformity of breakdown voltage, 180 mV (3 sigma)
- Excellent uniformity of gain
- With TSV technology (4-side tilable)
- Size  $3.88 \times 3.88 \text{ mm}^2$
- Cell pitch  $30 \times 30 \text{ }\mu\text{m}^2$
- Highly transparent glass protection layer
- Operating temperature range from  $-20^\circ\text{C}$  to  $+50^\circ\text{C}$
- RoHS and REACH compliant

### Applications

- X-ray and gamma ray detection
- Gamma ray spectroscopy
- Safety and security
- Nuclear medicine
- Positron emission tomography
- Life sciences
- Flow cytometry
- Fluorescence – luminescence measurements
- Time correlated single photon counting
- High energy physics
- Astrophysics

# Pad Layout and Soldering Ball Geometry

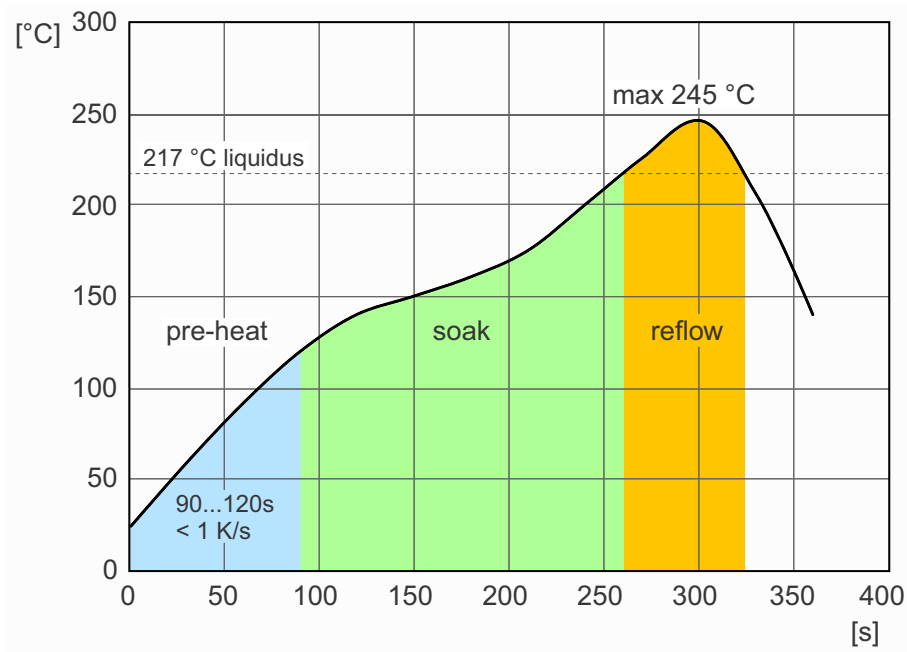
Figure 2: Bottom View (Left) and Cross Sections (Right)



- NOTES:
- 1) Dimensions are in millimeters.
  - 2) Nominal values rounded to two decimal places - Suppression of following zeros.
  - 3) A is anode, C is cathode.

# Reflow Soldering Diagram

Figure 3: Recommended Reflow Soldering Profile



## Absolute Maximum Ratings

Stresses in excess of the absolute maximum ratings can cause damage to the devices. Limits apply to each parameter in isolation. Absolute maximum ratings are those values beyond which damage to the device may occur if these limits are exceeded for other than a short period of time.

| Parameter                                      | Symbol      | Min. | Max. | Units |
|--|-------------|------|------|-------|
| Storage Temperature                            | $T_{STG}$   | -20  | +60  | °C    |
| Operating Temperature                          | $T_A$       | -20  | +50  | °C    |
| Soldering Temperature <sup>a, b</sup>          | $T_{SOLD}$  | —    | 245  | °C    |
| Lead Soldering Time <sup>a, b</sup>            | $t_{SOLD}$  | —    | 60   | s     |
| Electrostatic Discharge Voltage Capability HBM | $ESD_{HBM}$ | —    | 2    | kV    |
| Electrostatic Discharge Voltage Capability CDM | $ESD_{CDM}$ | —    | 500  | V     |
| Operating Over Voltage                         | $V_{OV}$    | —    | 10   | V     |

a. The AFBR-S4N44C013 is reflow-solderable according to solder diagram as shown in [Figure 3](#).

b. According to JEDEC J-STD-020D, the moisture sensitivity classification is MSL3.

## Device Specification

Features measured at 25°C unless otherwise specified.

### Geometric Features

| Parameter              | Symbol      | Value              | Units           |
|------------------------|-------------|--------------------|-----------------|
| Device Area            | DA          | $3.88 \times 3.88$ | mm <sup>2</sup> |
| Active Area            | AA          | $3.72 \times 3.72$ | mm <sup>2</sup> |
| Micro Cell Pitch       | $L_{cell}$  | 30                 | µm              |
| Number of Micro Cells  | $N_{cells}$ | 15060              | —               |
| Micro Cell Fill Factor | FF          | 76                 | %               |

## Optical and Electrical Features

Parameters have been measured for two recommended working points: *Typical* for general purpose applications and *Performance* for best timing performance.

| Parameter                                    | Symbol                   | Min. | Typ. | Max. | Units | Reference Plots          |
|--|--------------------------|------|------|------|-------|--------------------------|
| Spectral Range                               | $\lambda$                | 300  | —    | 900  | nm    |                          |
| Peak Sensitivity Wavelength                  | $\lambda_{PK}$           | —    | 420  | —    | nm    | <a href="#">Figure 4</a> |
| Breakdown Voltage                            | $V_{BD}$                 | —    | 26.9 | —    | V     | <a href="#">Figure 6</a> |
| Temperature Coefficient of Breakdown Voltage | $\Delta V_{BR}/\Delta T$ | —    | 26   | —    | mV/K  |                          |

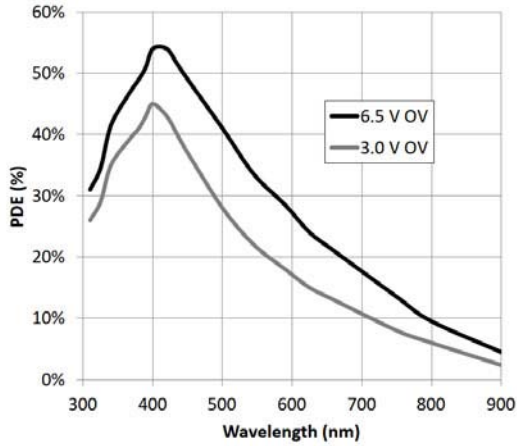
| Parameter                                 | Symbol              | Typ. <sup>a</sup> | Perf. <sup>a</sup> | Units                | Reference Plots                     |
|---|---------------------|-------------------|--------------------|----------------------|-------------------------------------|
| Photo Detection Efficiency <sup>b</sup>   | PDE                 | 43                | 55                 | %                    | <a href="#">Figure 5</a>            |
| Dark Current                              | $I_D$               | 0.5               | 3.4                | $\mu A$              | <a href="#">Figure 6</a>            |
| Dark Count Rate <sup>c</sup>              | DCR                 | 1.7               | 3.7                | Mcps                 | <a href="#">Figure 7, Figure 10</a> |
| Dark Count Rate Per Unit Area             | $DCR_{mm^2}$        | 120               | 270                | kcps/mm <sup>2</sup> |                                     |
| Gain                                      | G                   | 1.6               | 3.3                | $\times 10^6$        | <a href="#">Figure 8, Figure 11</a> |
| Optical Crosstalk                         | $P_{Xtalk}$         | 9                 | 29                 | %                    | <a href="#">Figure 9, Figure 12</a> |
| Afterpulsing Probability                  | $P_{AP}$            | <1                | 1                  | %                    | <a href="#">Figure 9, Figure 12</a> |
| Recharge Time Constant <sup>d</sup>       | $\tau_{fall}$       | 55                | 50                 | ns                   | <a href="#">Figure 13</a>           |
| Nominal Terminal Capacitance <sup>e</sup> | $C_T$               | 990               | 760                | pF                   |                                     |
| Temperature Coefficient of Gain           | $\Delta G/\Delta T$ | 1.1               | 1.0                | $\times 10^4/K$      |                                     |

- Typical values are measured at 3V above breakdown; performance at 7V above breakdown.
- Measured at peak sensitivity-wavelength. Measurement does not include correlated noise, such as afterpulsing or optical crosstalk.
- Measured at 0.5 p.e. amplitude. Measurement does not include delayed correlated events.
- Measured on  $1 \times 1 \text{ mm}^2$  devices with an input impedance of  $20\Omega$ .
- Measured using input sine wave with  $f = 200 \text{ kHz}$  and  $V_{in} = 500 \text{ mV}$ .

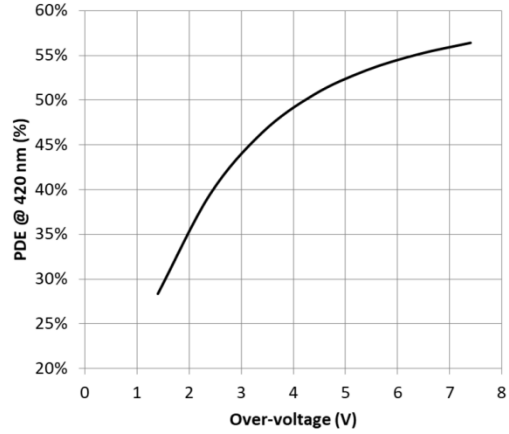
# Reference Plots

Features measured at 25°C unless otherwise specified.

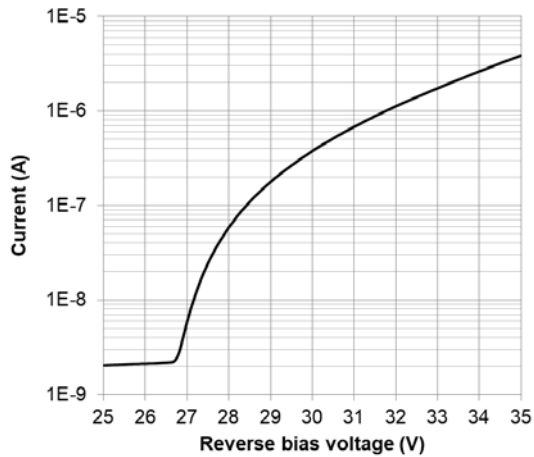
**Figure 4: Spectral Sensitivity**



**Figure 5: PDE at Peak  $\lambda$  vs. OV**



**Figure 6: Typical Reverse IV Curve**



**Figure 7: Dark Count Rate vs. OV**

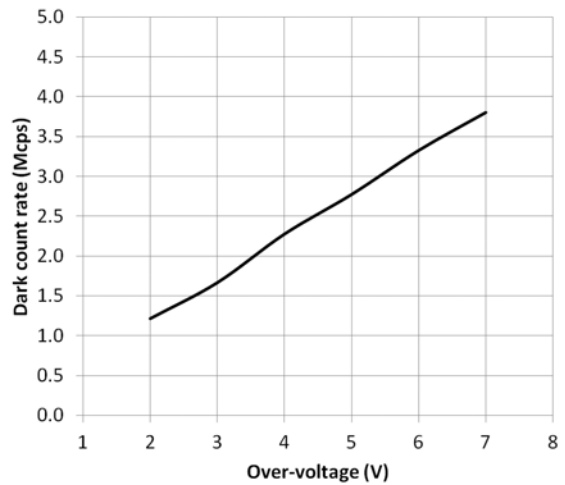


Figure 8: Gain vs.OV

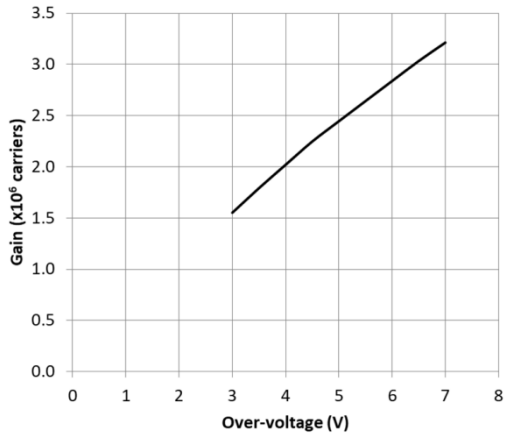


Figure 9: Correlated Noise vs. OV

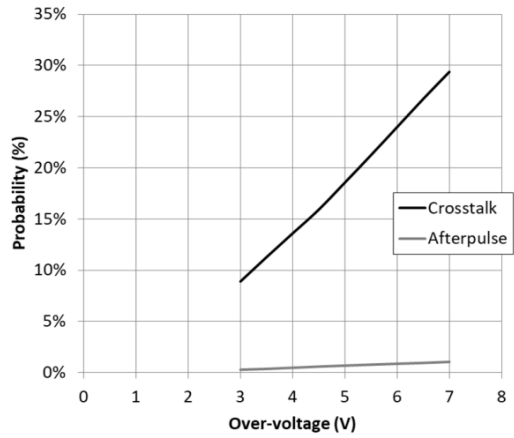


Figure 10: Dark Count Rate vs. PDE at Peak  $\lambda$

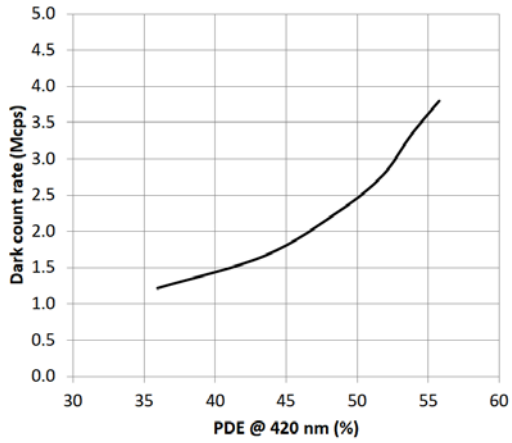


Figure 11: Gain vs. PDE at Peak  $\lambda$

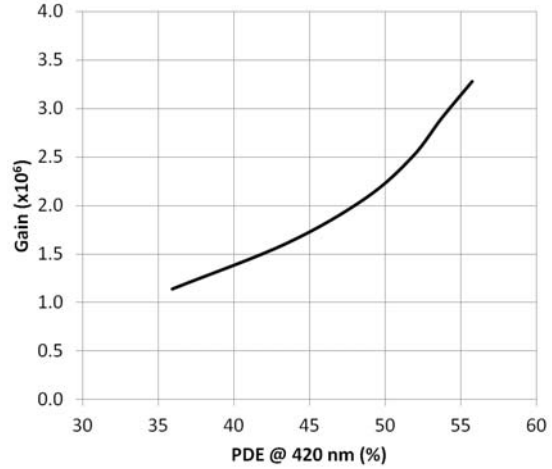


Figure 12: Correlated Noise vs. PDE at Peak  $\lambda$

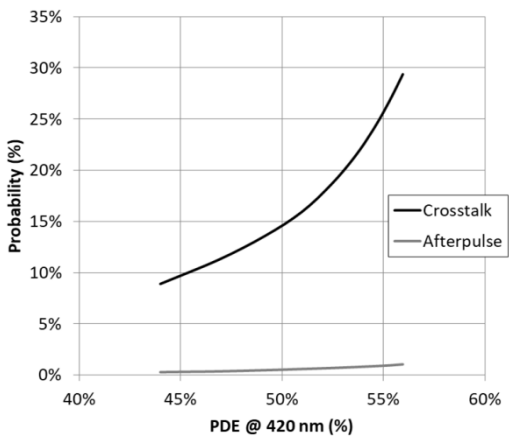
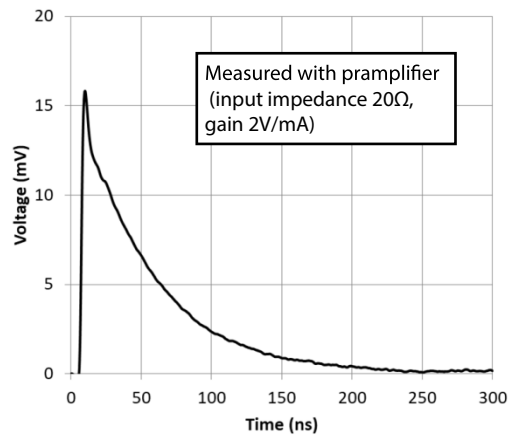


Figure 13: Example Signal Measured at 3V OV



Broadcom, the pulse logo, Connecting everything, Avago Technologies, Avago, and the A logo are among the trademarks of Broadcom and/or its affiliates in the United States, certain other countries, and/or the EU.

Copyright © 2018 Broadcom. All Rights Reserved.

The term “Broadcom” refers to Broadcom Inc. and/or its subsidiaries. For more information, please visit [www.broadcom.com](http://www.broadcom.com).

Broadcom reserves the right to make changes without further notice to any products or data herein to improve reliability, function, or design. Information furnished by Broadcom is believed to be accurate and reliable. However, Broadcom does not assume any liability arising out of the application or use of this information, nor the application or use of any product or circuit described herein, neither does it convey any license under its patent rights nor the rights of others.



Компания «Life Electronics» занимается поставками электронных компонентов импортного и отечественного производства от производителей и со складов крупных дистрибьюторов Европы, Америки и Азии.

С конца 2013 года компания активно расширяет линейку поставок компонентов по направлению коаксиальный кабель, кварцевые генераторы и конденсаторы (керамические, пленочные, электролитические), за счёт заключения дистрибьюторских договоров

Мы предлагаем:

- Конкуренспособные цены и скидки постоянным клиентам.
- Специальные условия для постоянных клиентов.
- Подбор аналогов.
- Поставку компонентов в любых объемах, удовлетворяющих вашим потребностям.
- Приемлемые сроки поставки, возможна ускоренная поставка.
- Доставку товара в любую точку России и стран СНГ.
- Комплексную поставку.
- Работу по проектам и поставку образцов.
- Формирование склада под заказчика.
- Сертификаты соответствия на поставляемую продукцию (по желанию клиента).
- Тестирование поставляемой продукции.
- Поставку компонентов, требующих военную и космическую приемку.
- Входной контроль качества.
- Наличие сертификата ISO.

В составе нашей компании организован Конструкторский отдел, призванный помогать разработчикам, и инженерам.

Конструкторский отдел помогает осуществить:

- Регистрацию проекта у производителя компонентов.
- Техническую поддержку проекта.
- Защиту от снятия компонента с производства.
- Оценку стоимости проекта по компонентам.
- Изготовление тестовой платы монтаж и пусконаладочные работы.



Тел: +7 (812) 336 43 04 (многоканальный)

Email: [org@lifeelectronics.ru](mailto:org@lifeelectronics.ru)