

SERIES 84R

Rugged Keypad for Tough Environments

FEATURES

- Metal Keys and Housing
- Sealed for Use Outdoors
- Full Travel Keys Provide Positive Feedback
- Choice of Dome Contacts or Conductive Rubber Contacts
- Choice of Matrix Coding or Single Pole/Common Bus Coding
- Available with an Optional Locking Connector
- Custom Engraved Legends Available

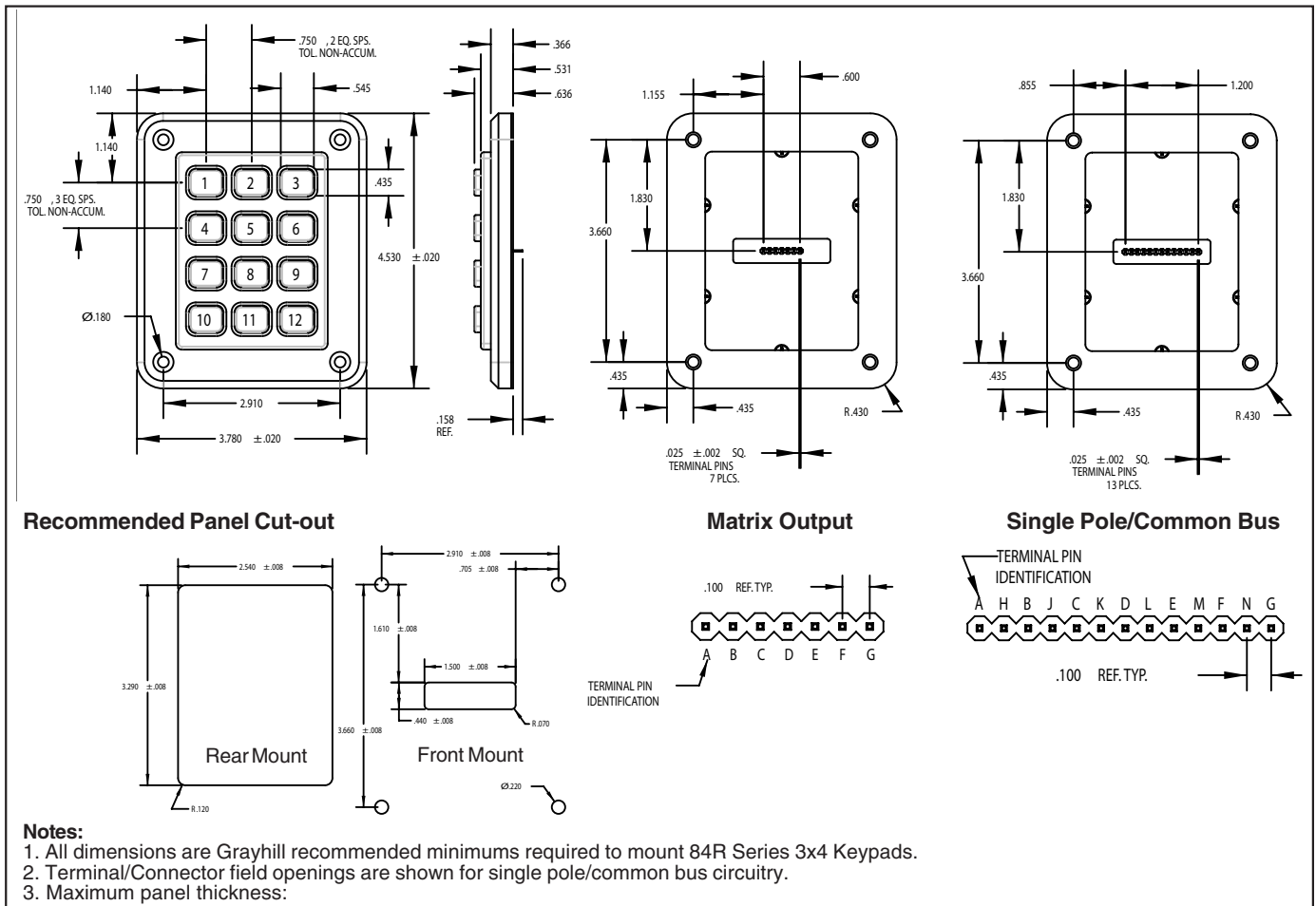
DESCRIPTION

Series 84R keypads work in harsh industrial environments where exposure to fine particulates compromises other keypads. The sealed openings and tough construction make this keypad perfect for outdoor use as well. Typical applications include security system code entry and product selection on outdoor terminals.

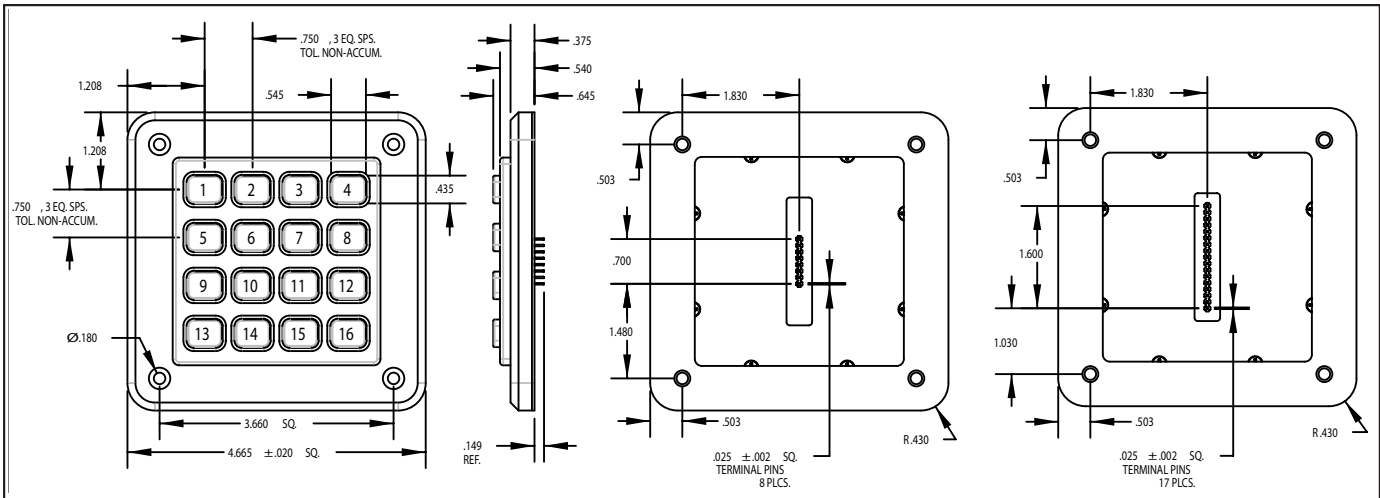


Keyboards and Keypads

3 X 4 DIMENSIONS in inches (and millimeters)



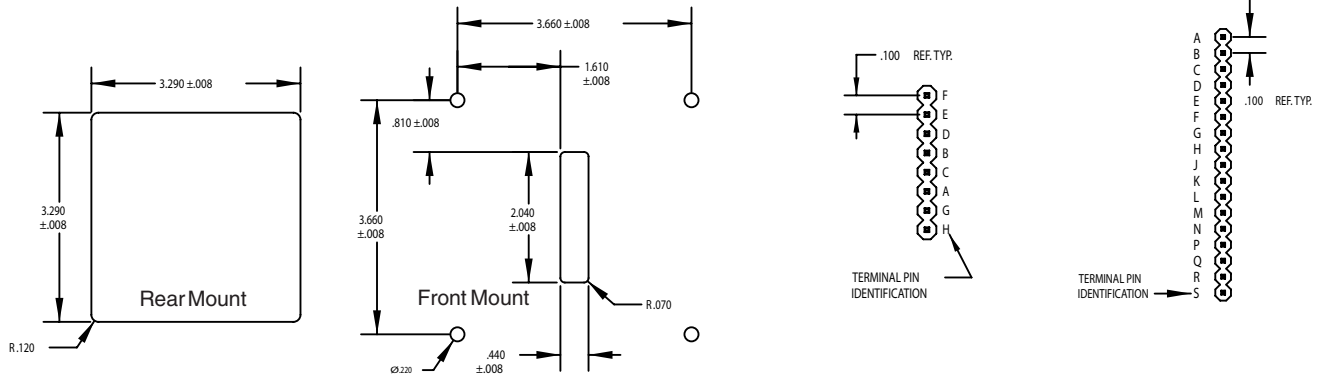
4 X 4 DIMENSIONS in inches (and millimeters)



Recommended Panel Cut-out

Matrix Output

Single Pole/Common Bus



Notes:

1. All dimensions are Grayhill recommended minimums required to mount 84R Series 3x4 Keypads.
2. Terminal/Connector field openings are shown for single pole/common bus circuitry.
3. Maximum panel thickness:

Keypads and Keypads

CODE AND TRUTH TABLES

Dots in the chart indicate connected terminals when switch is closed. Terminals are identified on the keyboard.

12 Button Keypads

16 Button Keypads

| 3x4 | CODES | |
|-----|-----------------|---------------------------|
| | Matrix | Single Pole/Common Bus |
| | BUTTON LOCATION | TERMINAL LOCATION |
| 1 | • | • |
| 2 | • | • |
| 3 | • | • |
| 4 | • | • |
| 5 | • | • |
| 6 | • | • |
| 7 | • | • |
| 8 | • | • |
| 9 | • | • |
| 10 | • | • |
| 11 | • | • |
| 12 | • | • |
| | C B A G F E D | E C B F D A N K H M L J G |

| 4x4 | CODES | |
|-----|-----------------|-----------------------------------|
| | Matrix | Single Pole/Common Bus |
| | BUTTON LOCATION | TERMINAL LOCATION |
| 1 | • | • |
| 2 | • | • |
| 3 | • | • |
| 4 | • | • |
| 5 | • | • |
| 6 | • | • |
| 7 | • | • |
| 8 | • | • |
| 9 | • | • |
| 10 | • | • |
| 11 | • | • |
| 12 | • | • |
| 13 | • | • |
| 14 | • | • |
| 15 | • | • |
| 16 | • | • |
| | A B C D E F G H | D B A C H F E G K M L J P R Q N S |

SPECIFICATIONS

Dome Contacts Rating Criteria

Rating at 24 Vdc: 10 mA resistive (max)
Contact Bounce: 4 milliseconds maximum at make; 10 milliseconds maximum at break
Contact Resistance: 10 ohms maximum
Voltage Breakdown: 250 V
Life Expectancy: 3 million operations/button
Insulation Resistance: 1000 MegOhms min.

Rubber Contacts Rating Criteria

Rating at 24 Vdc: 5 mA for .5 seconds
Contact Bounce: less than 12 milliseconds
Contact Resistance: less than 100 ohms initial
Voltage Breakdown: 250 VAC between components
Life Expectancy: 3 million operations/button
Insulation Resistance: >10 Ohms @500 VDC

Materials and Finishes

PC Board: FR-4 Glass Cloth Epoxy
Dome Retainer/Rear Seal Sheet: Polyester
Housing/Buttons: Aluminum Alloy
Keypad/Gasket: Black Fluorosilicone Rubber, 50 Durometer +5
Domes: Stainless Steel
Connector/Header: Glass Filled Polyester
Terminals: Gold Plated, Phosphor Bronze

Dome Contacts Operating Features

Pre-Travel: 0.030" minimum
Operating Force: 20 ±4 ounces
Operating Temperature: -55°C to 85°C
Humidity: 0 to 98% (no condensation)

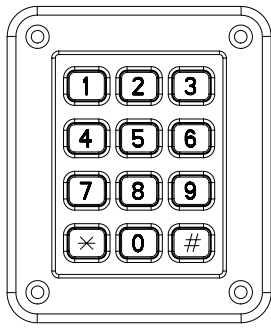
Rubber Contacts Operating Features

Pre-Travel: 0.050" minimum
Operating Force: 175 ±40 grams
Operating Temperature: -55°C to 85°C
Humidity: 0 to 98% (no condensation)

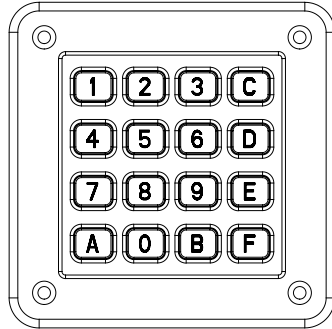
STANDARD LEGENDS

Available through Grayhill Distributors

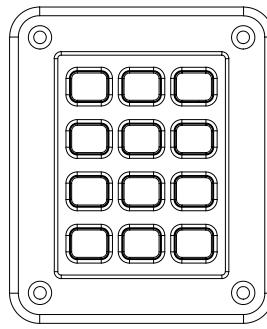
To order one of the configurations below, use the dash number shown here; select the keypad size and code, and order the part number with the appropriate legend dash number.



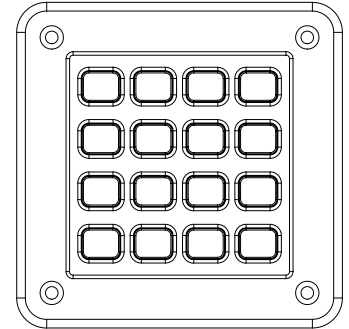
-112



-014



-000



-000

HEADER CONNECTORS

Compatible with: Samtec, Inc. Header Series BCS, BSW, CES, ESW, ESQ, SLW, SSW, SSQ, IDSS and IDSD or equivalent.

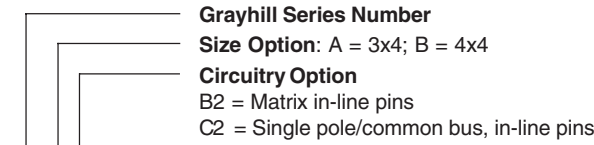
AVAILABILITY

For prices and discounts, contact a local Sales Office, an authorized local Distributor or Grayhill.

CUSTOM LEGENDS

Custom keytop graphics are available. Contact a local Sales Office or Grayhill directly to enquire about minimum requirements and costs.

ORDERING INFORMATION



84R-AB2-112-PD

Grayhill Series Number

Size Option: A = 3x4; B = 4x4

Circuitry Option

B2 = Matrix in-line pins

C2 = Single pole/common bus, in-line pins

Key Contact Option

D = Metal Domes; R = Conductive Rubber

Connector Option

P = Terminal Pins; C = Locking Connector

Standard Legend Choices

3x4 Size = -112; 4x4 Size = -014; Blank = -000

Компания «Life Electronics» занимается поставками электронных компонентов импортного и отечественного производства от производителей и со складов крупных дистрибьюторов Европы, Америки и Азии.

С конца 2013 года компания активно расширяет линейку поставок компонентов по направлению коаксиальный кабель, кварцевые генераторы и конденсаторы (керамические, пленочные, электролитические), за счёт заключения дистрибьюторских договоров

Мы предлагаем:

- Конкурентоспособные цены и скидки постоянным клиентам.
- Специальные условия для постоянных клиентов.
- Подбор аналогов.
- Поставку компонентов в любых объемах, удовлетворяющих вашим потребностям.
- Приемлемые сроки поставки, возможна ускоренная поставка.
- Доставку товара в любую точку России и стран СНГ.
- Комплексную поставку.
- Работу по проектам и поставку образцов.
- Формирование склада под заказчика.
- Сертификаты соответствия на поставляемую продукцию (по желанию клиента).
- Тестирование поставляемой продукции.
- Поставку компонентов, требующих военную и космическую приемку.
- Входной контроль качества.
- Наличие сертификата ISO.

В составе нашей компании организован Конструкторский отдел, призванный помогать разработчикам, и инженерам.

Конструкторский отдел помогает осуществить:

- Регистрацию проекта у производителя компонентов.
- Техническую поддержку проекта.
- Защиту от снятия компонента с производства.
- Оценку стоимости проекта по компонентам.
- Изготовление тестовой платы монтаж и пусконаладочные работы.



Тел: +7 (812) 336 43 04 (многоканальный)

Email: org@lifeelectronics.ru