

## FEATURES

- Guaranteed maximum frequency > 4GHz
- 3.3V and 5V power supply options
- Guaranteed propagation delay <440ps over temperature
- Internal 75KΩ input pull-down resistors
- Wide operating temperature range: -40°C to +85°C
- Available in 8-pin MSOP and SOIC packages


**ECL Pro™**

## PIN NAMES

| Pin             | Function                 |
|-----------------|--------------------------|
| CLK, /CLK       | ECL Clock Inputs         |
| Reset           | ECL Asynchronous Reset   |
| V <sub>BB</sub> | Reference Voltage Output |
| Q, /Q           | ECL Data Outputs         |

## TRUTH TABLE<sup>(1)</sup>

| CLK | /CLK | RESET | Q | /Q |
|-----|------|-------|---|----|
| X   | X    | Z     | L | H  |
| Z   | /Z   | L     | F | F  |

**Note 1:** Z = LOW-to-HIGH Transition  
 /Z = HIGH-to-LOW Transition  
 F = Divide by 2 function.

## DESCRIPTION

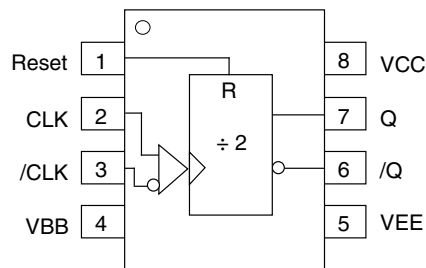
The SY10/100EP32V is an integrated ÷2 divider with differential clock inputs.

The V<sub>BB</sub> pin, an internally generated voltage supply, is available to this device only. For single-ended input conditions, the unused differential input is connected to V<sub>BB</sub> as a switching reference voltage. V<sub>BB</sub> may also rebias AC-coupled inputs. When used, decouple V<sub>BB</sub> and V<sub>CC</sub> via a 0.01μF capacitor and limit current sourcing or sinking to 0.5mA. When not used, V<sub>BB</sub> should be left open.

The reset pin is asynchronous and is asserted on the rising edge. Upon power-up, the internal flip-flops will attain a random state; the reset allows for the synchronous use of multiple EP32's in a system.

The 100k series includes internal temperature compensation circuitry.

**PACKAGE/ORDERING INFORMATION**



**8-Pin SOIC (Z8-1)  
8-Pin MSOP (K8-1)**

**Ordering Information<sup>(1)</sup>**

| Part Number                      | Package Type | Operating Range | Package Marking                        | Lead Finish    |
|----------------------------------|--------------|-----------------|--|----------------|
| SY10EP32VZC                      | Z8-1         | Commercial      | HEP32V                                 | Sn-Pb          |
| SY10EP32VZCTR <sup>(2)</sup>     | Z8-1         | Commercial      | HEP32V                                 | Sn-Pb          |
| SY100EP32VZC                     | Z8-1         | Commercial      | XEP32V                                 | Sn-Pb          |
| SY100EP32VZCTR <sup>(2)</sup>    | Z8-1         | Commercial      | XEP32V                                 | Sn-Pb          |
| SY10EP32VKC                      | K8-1         | Commercial      | HP32                                   | Sn-Pb          |
| SY10EP32VKCTR <sup>(2)</sup>     | K8-1         | Commercial      | HP32                                   | Sn-Pb          |
| SY100EP32VKC                     | K8-1         | Commercial      | XP32                                   | Sn-Pb          |
| SY100EP32VKCTR <sup>(2)</sup>    | K8-1         | Commercial      | XP32                                   | Sn-Pb          |
| SY10EP32VZI                      | Z8-1         | Industrial      | HEP32V                                 | Sn-Pb          |
| SY10EP32VZITR <sup>(2)</sup>     | Z8-1         | Industrial      | HEP32V                                 | Sn-Pb          |
| SY100EP32VZI                     | Z8-1         | Industrial      | XEP32V                                 | Sn-Pb          |
| SY100EP32VZITR <sup>(2)</sup>    | Z8-1         | Industrial      | XEP32V                                 | Sn-Pb          |
| SY10EP32VKI                      | K8-1         | Industrial      | HP32                                   | Sn-Pb          |
| SY10EP32VKITR <sup>(2)</sup>     | K8-1         | Industrial      | HP32                                   | Sn-Pb          |
| SY100EP32VKI                     | K8-1         | Industrial      | XP32                                   | Sn-Pb          |
| SY100EP32VKITR <sup>(2)</sup>    | K8-1         | Industrial      | XP32                                   | Sn-Pb          |
| SY10EP32VZG <sup>(3)</sup>       | Z8-1         | Industrial      | HEP32V with Pb-Free bar-line indicator | NiPdAu Pb-Free |
| SY10EP32VZGTR <sup>(2, 3)</sup>  | Z8-1         | Industrial      | HEP32V with Pb-Free bar-line indicator | NiPdAu Pb-Free |
| SY100EP32VZG <sup>(3)</sup>      | Z8-1         | Industrial      | XEP32V with Pb-Free bar-line indicator | NiPdAu Pb-Free |
| SY100EP32VZGTR <sup>(2, 3)</sup> | Z8-1         | Industrial      | XEP32V with Pb-Free bar-line indicator | NiPdAu Pb-Free |
| SY10EP32VKG <sup>(3)</sup>       | K8-1         | Industrial      | HP32 with Pb-Free bar-line indicator   | NiPdAu Pb-Free |
| SY10EP32VKGTR <sup>(2, 3)</sup>  | K8-1         | Industrial      | HP32 with Pb-Free bar-line indicator   | NiPdAu Pb-Free |
| SY100EP32VKG <sup>(3)</sup>      | K8-1         | Industrial      | XP32 with Pb-Free bar-line indicator   | NiPdAu Pb-Free |
| SY100EP32VKGTR <sup>(2, 3)</sup> | K8-1         | Industrial      | XP32 with Pb-Free bar-line indicator   | NiPdAu Pb-Free |

**Notes:**

1. Contact factory for die availability. Dice are guaranteed at T<sub>A</sub> = 25°C, DC Electricals only.
2. Tape and Reel.
3. Pb-Free package is recommended for new designs.

### ABSOLUTE MAXIMUM RATINGS<sup>(1)</sup>

| Symbol            | Rating   | Value                  | Unit         |
|-------------------|--|------------------------|--------------|
| $V_{CC} - V_{EE}$ | Power Supply Voltage   | +6.0                   | V            |
| $V_{IN}$          | Input Voltage ( $V_{CC} = 0V$ , $V_{IN}$ not more negative than $V_{EE}$ )<br>Input Voltage ( $V_{EE} = 0V$ , $V_{IN}$ not more positive than $V_{CC}$ ) | -6.0 to 0<br>+6.0 to 0 | V<br>V       |
| $I_{OUT}$         | Output Current<br>-Continuous<br>-Surge  | 50<br>100              | mA           |
| $I_{BB}$          | $V_{BB}$ Sink/Source Current <sup>(2)</sup>  | ±0.5                   | mA           |
| $T_A$             | Operating Temperature Range  | -40 to +85             | °C           |
| $T_{STORE}$       | Storage Temperature Range  | -65 to +150            | °C           |
| $T_{LEAD}$        | Lead Temperature (soldering, 20 sec.)  | +260                   | °C           |
| $\theta_{JA}$     | Package Thermal Resistance (Junction-to-Ambient)<br>-Still Air SOIC<br>-Still Air MSOP<br>-multi-layer PCB   | 160<br>206             | °C/W<br>°C/W |
| $\theta_{JC}$     | Package Thermal Resistance (Junction-to-Case)<br>SOIC<br>MSOP  | 39<br>39               | °C/W<br>°C/W |

**Note 1.** Permanent device damage may occur if absolute maximum ratings are exceeded. This is a stress rating only and functional operation is not implied at conditions other than those detailed in the operational sections of this data sheet. Exposure to absolute maximum rating conditions for extended periods may affect device reliability.

**Note 2.** Due to the limited drive capability, the  $V_{BB}$  reference should only be used for inputs from the same package device (i.e., do not sue for other devices).

### (10EP) LVPECL DC ELECTRICAL CHARACTERISTICS<sup>(1)</sup>

$V_{CC} = 3.3V \pm 10\%$ ;  $V_{EE} = 0V$ <sup>(2)</sup>

| Symbol      | Parameter   | $T_A = -40^\circ C$ |             |          | $T_A = +25^\circ C$ |        |          | $T_A = +85^\circ C$ |        |          | Unit |
|-------------|---|---------------------|-------------|----------|---------------------|--------|----------|---------------------|--------|----------|------|
|             |   | Min.                | Typ.        | Max.     | Min.                | Typ.   | Max.     | Min.                | Typ.   | Max.     |      |
| $I_{EE}$    | Power Supply Current  | —                   | 30          | 37       | —                   | 30     | 37       | —                   | 30     | 37       | mA   |
| $V_{OH}$    | Output HIGH Voltage <sup>(3)</sup>                                    | 2165                | 2290        | 2415     | 2230                | 2355   | 2480     | 2290                | 2415   | 2540     | mV   |
| $V_{OL}$    | Output LOW Voltage <sup>(3)</sup>                                     | 1365                | 1490        | 1615     | 1430                | 1555   | 1680     | 1490                | 1615   | 1740     | mV   |
| $V_{IH}$    | Input HIGH Voltage (Single-Ended)                                     | 2090                | —           | 2415     | 2155                | —      | 2480     | 2215                | —      | 2540     | mV   |
| $V_{IL}$    | Input LOW Voltage (Single-Ended)                                      | 1365                | —           | 1690     | 1430                | —      | 1755     | 1490                | —      | 1815     | mV   |
| $V_{BB}$    | Output Voltage  | 1790                | 1890        | 1990     | 1855                | 1955   | 2055     | 1915                | 2015   | 2115     | mV   |
| $V_{IHCMR}$ | Input HIGH Voltage <sup>(4)</sup><br>Common Mode Range (Differential) | 2.0                 | —           | $V_{CC}$ | 2.0                 | —      | $V_{CC}$ | 2.0                 | —      | $V_{CC}$ | V    |
| $I_{IH}$    | Input HIGH Current  | —                   | —           | 150      | —                   | —      | 150      | —                   | —      | 150      | µA   |
| $I_{IL}$    | Input LOW Current   | CLK<br>/CLK         | 0.5<br>-150 | —<br>—   | 0.5<br>-150         | —<br>— | —<br>—   | 0.5<br>-150         | —<br>— | —<br>—   | µA   |

**Note 1.** 10EP circuits are designed to meet the DC specifications shown in the above table after thermal equilibrium has been established. The circuit is in a test socket or mounted on a printed circuit board and traverse airflow greater than 500lfpm is maintained.

**Note 2.** Input and output parameters vary 1:1 with  $V_{CC}$ .

**Note 3.** All loading with  $50\Omega$  to  $V_{CC} - 2.0V$ .

**Note 4.** The  $V_{IHCMR}$  range is referenced to the most positive side of the differential input signal.

**(10EP) PECL DC ELECTRICAL CHARACTERISTICS<sup>(1)</sup>**

$V_{CC} = 5.0V \pm 10\%$ ;  $V_{EE} = 0V^{(2)}$

| Symbol      | Parameter  | $T_A = -40^\circ C$ |             |          | $T_A = +25^\circ C$ |             |          | $T_A = +85^\circ C$ |             |          | Unit    |         |
|-------------|--|---------------------|-------------|----------|---------------------|-------------|----------|---------------------|-------------|----------|---------|---------|
|             |  | Min.                | Typ.        | Max.     | Min.                | Typ.        | Max.     | Min.                | Typ.        | Max.     |         |         |
| $I_{EE}$    | Power Supply Current   | —                   | —           | 37       | —                   | 30          | 37       | —                   | —           | 37       | mA      |         |
| $V_{OH}$    | Output HIGH Voltage <sup>(3)</sup>                                 | 3865                | 3990        | 4115     | 3930                | 4055        | 4180     | 3990                | 4115        | 4240     | mV      |         |
| $V_{OL}$    | Output LOW Voltage <sup>(3)</sup>                                  | 3065                | 3190        | 3315     | 3130                | 3255        | 3380     | 3190                | 3315        | 3440     | mV      |         |
| $V_{IH}$    | Input HIGH Voltage (Single-Ended)                                  | 3790                | —           | 4115     | 3855                | —           | 4180     | 3915                | —           | 4240     | mV      |         |
| $V_{IL}$    | Input LOW Voltage (Single-Ended)                                   | 3065                | —           | 3390     | 3130                | —           | 3455     | 3190                | —           | 3515     | mV      |         |
| $V_{BB}$    | Output Voltage   | 3490                | 3590        | 3690     | 3555                | 3655        | 3755     | 3615                | 3715        | 3815     | mV      |         |
| $V_{IHCMR}$ | Input HIGH Voltage <sup>(4)</sup> Common Mode Range (Differential) | 2.0                 | —           | $V_{CC}$ | 2.0                 | —           | $V_{CC}$ | 2.0                 | —           | $V_{CC}$ | V       |         |
| $I_{IH}$    | Input HIGH Current   | —                   | —           | 150      | —                   | —           | 150      | —                   | —           | 150      | $\mu A$ |         |
| $I_{IL}$    | Input LOW Current  | CLK /CLK            | 0.5<br>-150 | —<br>—   | —<br>—              | 0.5<br>-150 | —<br>—   | —<br>—              | 0.5<br>-150 | —<br>—   | —<br>—  | $\mu A$ |

**Note 1.** 10EP circuits are designed to meet the DC specifications shown in the above table after thermal equilibrium has been established. The circuit is in a test socket or mounted on a printed circuit board and traverse airflow greater than 500lfpm is maintained.

**Note 2.** Input and output parameters vary 1:1 with  $V_{CC}$ .

**Note 3.** All loading with  $50\Omega$  to  $V_{CC} - 2.0V$ .

**Note 4.** The  $V_{IHCMR}$  range is referenced to the most positive side of the differential input signal.

**(10EP) ECL/LVECL DC ELECTRICAL CHARACTERISTICS<sup>(1)</sup>**

$V_{CC} = 0V$ ;  $V_{EE} = -3.3V$  to  $5.0V \pm 10\%^{(2)}$

| Symbol      | Parameter  | $T_A = -40^\circ C$ |             |        | $T_A = +25^\circ C$ |             |        | $T_A = +85^\circ C$ |             |        | Unit    |         |
|-------------|--|---------------------|-------------|--------|---------------------|-------------|--------|---------------------|-------------|--------|---------|---------|
|             |  | Min.                | Typ.        | Max.   | Min.                | Typ.        | Max.   | Min.                | Typ.        | Max.   |         |         |
| $I_{EE}$    | Power Supply Current   | —                   | —           | 37     | —                   | 30          | 37     | —                   | —           | 37     | mA      |         |
| $V_{OH}$    | Output HIGH Voltage <sup>(3)</sup>                                 | -1135               | -1010       | -885   | -1070               | -945        | -820   | -1010               | -885        | -760   | mV      |         |
| $V_{OL}$    | Output LOW Voltage <sup>(3)</sup>                                  | -1935               | -1810       | -1685  | -1870               | -1745       | -1620  | -1810               | -1685       | -1560  | mV      |         |
| $V_{IH}$    | Input HIGH Voltage (Single-Ended)                                  | -1210               | —           | -885   | -1145               | —           | -820   | -1085               | —           | -760   | mV      |         |
| $V_{IL}$    | Input LOW Voltage (Single-Ended)                                   | -1935               | —           | -1610  | -1870               | —           | -1545  | -1810               | —           | -1485  | mV      |         |
| $V_{BB}$    | Output Voltage   | -1510               | -1410       | -1310  | -1445               | -1345       | -1245  | -1385               | -1285       | -1185  | mV      |         |
| $V_{IHCMR}$ | Input HIGH Voltage <sup>(4)</sup> Common Mode Range (Differential) | $V_{EE} + 2.0$      |             | 0.0    | $V_{EE} + 2.0$      |             | 0.0    | $V_{EE} + 2.0$      |             | 0.0    | V       |         |
| $I_{IH}$    | Input HIGH Current   | —                   | —           | 150    | —                   | —           | 150    | —                   | —           | 150    | $\mu A$ |         |
| $I_{IL}$    | Input LOW Current  | CLK /CLK            | 0.5<br>-150 | —<br>— | —<br>—              | 0.5<br>-150 | —<br>— | —<br>—              | 0.5<br>-150 | —<br>— | —<br>—  | $\mu A$ |

**Note 1.** 10EP circuits are designed to meet the DC specifications shown in the above table after thermal equilibrium has been established. The circuit is in a test socket or mounted on a printed circuit board and traverse airflow greater than 500lfpm is maintained.

**Note 2.** Input and output parameters vary 1:1 with  $V_{CC}$ .

**Note 3.** All loading with  $50\Omega$  to  $V_{CC} - 2.0V$ .

**Note 4.**  $V_{IHCMR}$  (min) varies 1:1 with  $V_{EE}$ . The  $V_{IHCMR}$  range is referenced to the most positive side of the differential input signal.

**(100EP) LVPECL DC ELECTRICAL CHARACTERISTICS<sup>(1)</sup>** $V_{CC} = +3.3V \pm 10\%$ ;  $V_{EE} = 0V^{(2)}$ 

| Symbol      | Parameter  | $T_A = -40^\circ C$ |             |          | $T_A = +25^\circ C$ |        |          | $T_A = +85^\circ C$ |        |          | Unit    |
|-------------|--|---------------------|-------------|----------|---------------------|--------|----------|---------------------|--------|----------|---------|
|             |  | Min.                | Typ.        | Max.     | Min.                | Typ.   | Max.     | Min.                | Typ.   | Max.     |         |
| $I_{EE}$    | Power Supply Current   | —                   | —           | 37       | —                   | 30     | 37       | —                   | —      | 42       | mA      |
| $V_{OH}$    | Output HIGH Voltage <sup>(3)</sup>                                       | 2155                | 2280        | 2405     | 2155                | 2280   | 2405     | 2155                | 2280   | 2405     | mV      |
| $V_{OL}$    | Output LOW Voltage <sup>(3)</sup>  | 1355                | 1480        | 1605     | 1355                | 1480   | 1605     | 1355                | 1480   | 1605     | mV      |
| $V_{IH}$    | Input HIGH Voltage<br>(Single-Ended)                                     | 2075                | —           | 2420     | 2075                | —      | 2420     | 2075                | —      | 2420     | mV      |
| $V_{IL}$    | Input LOW Voltage<br>(Single-Ended)                                      | 1355                | —           | 1675     | 1355                | —      | 1675     | 1355                | —      | 1675     | mV      |
| $V_{BB}$    | Output Voltage   | 1775                | 1875        | 1975     | 1775                | 1875   | 1975     | 1775                | 1875   | 1975     | mV      |
| $V_{IHCMR}$ | Input HIGH Voltage <sup>(4)</sup><br>Common Mode Range<br>(Differential) | 2.0                 | —           | $V_{CC}$ | 2.0                 | —      | $V_{CC}$ | 2.0                 | —      | $V_{CC}$ | V       |
| $I_{IH}$    | Input HIGH Current   | —                   | —           | 150      | —                   | —      | 150      | —                   | —      | 150      | $\mu A$ |
| $I_{IL}$    | Input LOW Current  | CLK<br>/CLK         | 0.5<br>-150 | —<br>—   | 0.5<br>-150         | —<br>— | —<br>—   | 0.5<br>-150         | —<br>— | —<br>—   | $\mu A$ |

**Note 1.** 100EP circuits are designed to meet the DC specifications shown in the above table after thermal equilibrium has been established. The circuit is in a test socket or mounted on a printed circuit board and traverse airflow greater than 500lfpm is maintained.

**Note 2.** Input and output parameters vary 1:1 with  $V_{CC}$ .

**Note 3.** All loading with  $50\Omega$  to  $V_{CC} - 2.0V$ .

**Note 4.** The  $V_{IHCMR}$  range is referenced to the most positive side of the differential input signal.

**(100EP) PECL DC ELECTRICAL CHARACTERISTICS<sup>(1)</sup>** $V_{CC} = +5.0V \pm 10\%$ ;  $V_{EE} = 0V^{(2)}$ 

| Symbol      | Parameter  | $T_A = -40^\circ C$ |             |          | $T_A = +25^\circ C$ |        |          | $T_A = +85^\circ C$ |        |          | Unit    |
|-------------|--|---------------------|-------------|----------|---------------------|--------|----------|---------------------|--------|----------|---------|
|             |  | Min.                | Typ.        | Max.     | Min.                | Typ.   | Max.     | Min.                | Typ.   | Max.     |         |
| $I_{EE}$    | Power Supply Current   | —                   | —           | 37       | —                   | 30     | 37       | —                   | —      | 42       | mA      |
| $V_{OH}$    | Output HIGH Voltage <sup>(3)</sup>                                       | 3855                | 3980        | 4105     | 3855                | 3980   | 4105     | 3855                | 3980   | 4105     | mV      |
| $V_{OL}$    | Output LOW Voltage <sup>(3)</sup>  | 3055                | 3180        | 3305     | 3055                | 3180   | 3305     | 3055                | 3180   | 3305     | mV      |
| $V_{IH}$    | Input HIGH Voltage<br>(Single-Ended)                                     | 3775                | —           | 4120     | 3775                | —      | 4120     | 3775                | —      | 4120     | mV      |
| $V_{IL}$    | Input LOW Voltage<br>(Single-Ended)                                      | 3055                | —           | 3375     | 3055                | —      | 3375     | 3055                | —      | 3375     | mV      |
| $V_{BB}$    | Output Voltage   | 3475                | 3575        | 3675     | 3475                | 3575   | 3675     | 3475                | 3575   | 3675     | mV      |
| $V_{IHCMR}$ | Input HIGH Voltage <sup>(4)</sup><br>Common Mode Range<br>(Differential) | 2.0                 | —           | $V_{CC}$ | 2.0                 | —      | $V_{CC}$ | 2.0                 | —      | $V_{CC}$ | V       |
| $I_{IH}$    | Input HIGH Current   | —                   | —           | 150      | —                   | —      | 150      | —                   | —      | 150      | $\mu A$ |
| $I_{IL}$    | Input LOW Current  | CLK<br>/CLK         | 0.5<br>-150 | —<br>—   | 0.5<br>-150         | —<br>— | —<br>—   | 0.5<br>-150         | —<br>— | —<br>—   | $\mu A$ |

**Note 1.** 100EP circuits are designed to meet the DC specifications shown in the above table after thermal equilibrium has been established. The circuit is in a test socket or mounted on a printed circuit board and traverse airflow greater than 500lfpm is maintained.

**Note 2.** Input and output parameters vary 1:1 with  $V_{CC}$ .

**Note 3.** All loading with  $50\Omega$  to  $V_{CC} - 2.0V$ .

**Note 4.** The  $V_{IHCMR}$  range is referenced to the most positive side of the differential input signal.

**(100EP) ECL/LVECL DC ELECTRICAL CHARACTERISTICS(1)**

$V_{CC} = 0V$ ;  $V_{EE} = -3.3V$  to  $-5.0V \pm 10\%$ (2)

| Symbol      | Parameter  | $T_A = -40^\circ C$ |       |       | $T_A = +25^\circ C$ |       |       | $T_A = +85^\circ C$ |       |       | Unit    |
|-------------|--|---------------------|-------|-------|---------------------|-------|-------|---------------------|-------|-------|---------|
|             |  | Min.                | Typ.  | Max.  | Min.                | Typ.  | Max.  | Min.                | Typ.  | Max.  |         |
| $I_{EE}$    | Power Supply Current                                   | —                   | —     | 37    | —                   | 30    | 37    | —                   | —     | 42    | mA      |
| $V_{OH}$    | Output HIGH Voltage(3)                                 | -1145               | -1020 | -895  | -1145               | -1020 | -895  | -1145               | -1020 | -895  | mV      |
| $V_{OL}$    | Output LOW Voltage(3)                                  | -1945               | -1820 | -1695 | -1945               | -1820 | -1695 | -1945               | -1820 | -1695 | mV      |
| $V_{IH}$    | Input HIGH Voltage (Single-Ended)                      | -1225               | —     | -880  | -1225               | —     | -880  | -1225               | —     | -880  | mV      |
| $V_{IL}$    | Input LOW Voltage (Single-Ended)                       | -1945               | —     | -1625 | -1945               | —     | -1625 | -1945               | —     | -1625 | mV      |
| $V_{BB}$    | Output Voltage   | -1525               | -1425 | -1325 | -1525               | -1425 | -1325 | -1525               | -1425 | -1325 | mV      |
| $V_{IHCMR}$ | Input HIGH Voltage(4) Common Mode Range (Differential) | $V_{EE} + 2.0$      |       | 0.0   | $V_{EE} + 2.0$      |       | 0.0   | $V_{EE} + 2.0$      |       | 0.0   | V       |
| $I_{IH}$    | Input HIGH Current                                     | —                   | —     | 150   | —                   | —     | 150   | —                   | —     | 150   | $\mu A$ |
| $I_{IL}$    | Input LOW Current                                      | CLK /CLK            | 0.5   | —     | —                   | 0.5   | —     | —                   | 0.5   | —     | $\mu A$ |
|             |  |                     | -150  | —     | —                   | -150  | —     | —                   | -150  | —     |         |

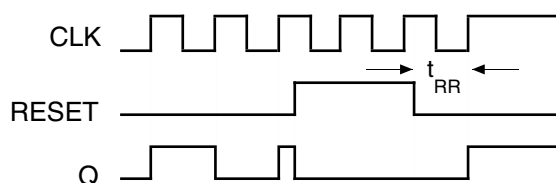
**Note 1.** 100EP circuits are designed to meet the DC specifications shown in the above table after thermal equilibrium has been established. The circuit is in a test socket or mounted on a printed circuit board and traverse airflow greater than 500lfpm is maintained.

**Note 2.** Input and output parameters vary 1:1 with  $V_{CC}$ .

**Note 3.** All loading with  $50\Omega$  to  $V_{CC} - 2.0V$ .

**Note 4.**  $V_{IHCMR} (min)$  varies 1:1 with  $V_{EE}$ . The  $V_{IHCMR}$  range is referenced to the most positive side of the differential input signal.

**TIMING DIAGRAM**



**AC ELECTRICAL CHARACTERISTICS(1)**

NECL:  $V_{CC} = 0V$ ,  $V_{EE} = -3.3V$  to  $-5.0V \pm 10\%$ ; PECL:  $V_{EE} = 0V$ ,  $V_{CC} = +3.3V$  to  $+5.0V \pm 10\%$

| Symbol                 | Parameter  | $T_A = -40^\circ C$ |      |      | $T_A = +25^\circ C$ |      |      | $T_A = +85^\circ C$ |      |      | Unit    |
|------------------------|--|---------------------|------|------|---------------------|------|------|---------------------|------|------|---------|
|                        |  | Min.                | Typ. | Max. | Min.                | Typ. | Max. | Min.                | Typ. | Max. |         |
| $f_{MAX}$              | Maximum Frequency <sup>(3)</sup>                               | 4                   | —    | —    | 4                   | —    | —    | 4                   | —    | —    | GHz     |
| $t_{PLH}$<br>$t_{PHL}$ | Propagation Delay to Output Differential<br>RESET, CLK → Q, /Q | 250                 | 330  | 420  | 260                 | 275  | 430  | 280                 | 400  | 440  | ps      |
| $t_{RR}$               | Set/Reset Recovery   | 200                 | —    | —    | 200                 | 100  | —    | 200                 | —    | —    | ps      |
| $t_{PW}$               | Minimum Pulse Width RESET                                      | 550                 | —    | —    | 550                 | 200  | —    | 550                 | —    | —    | ps      |
| $t_{JITTER}$           | Cycle-to-Cycle RMS Jitter <sup>(2)</sup>                       | —                   | 0.2  | < 1  | —                   | 0.2  | < 1  | —                   | 0.2  | < 1  | ps(rms) |
| $V_{PP}$               | Input Voltage Swing (Differential)                             | 150                 | 800  | 1200 | 150                 | 800  | 1200 | 150                 | 800  | 1200 | mV      |
| $t_r$<br>$t_f$         | Output Rise/Fall Times Q, /Q (20% to 80%)                      | 50                  | 100  | 150  | 50                  | 100  | 160  | 50                  | 100  | 160  | ps      |

**Note 1.** Measured using a 750mV source, 50% duty cycle clock source. All loading with 50Ω to  $V_{CC} - 2.0V$ .

**Note 2.** See Figure 1.  $f_{MAX}$  Jitter below.

**Note 3.**  $f_{MAX}$  guaranteed for functionality only.  $V_{OL}$  and  $V_{OH}$  levels are guaranteed at DC only.

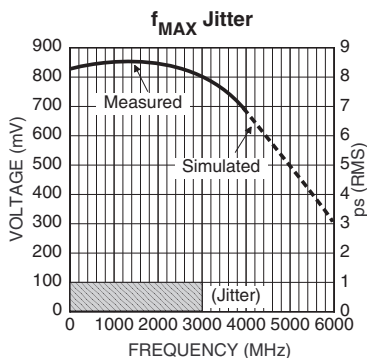
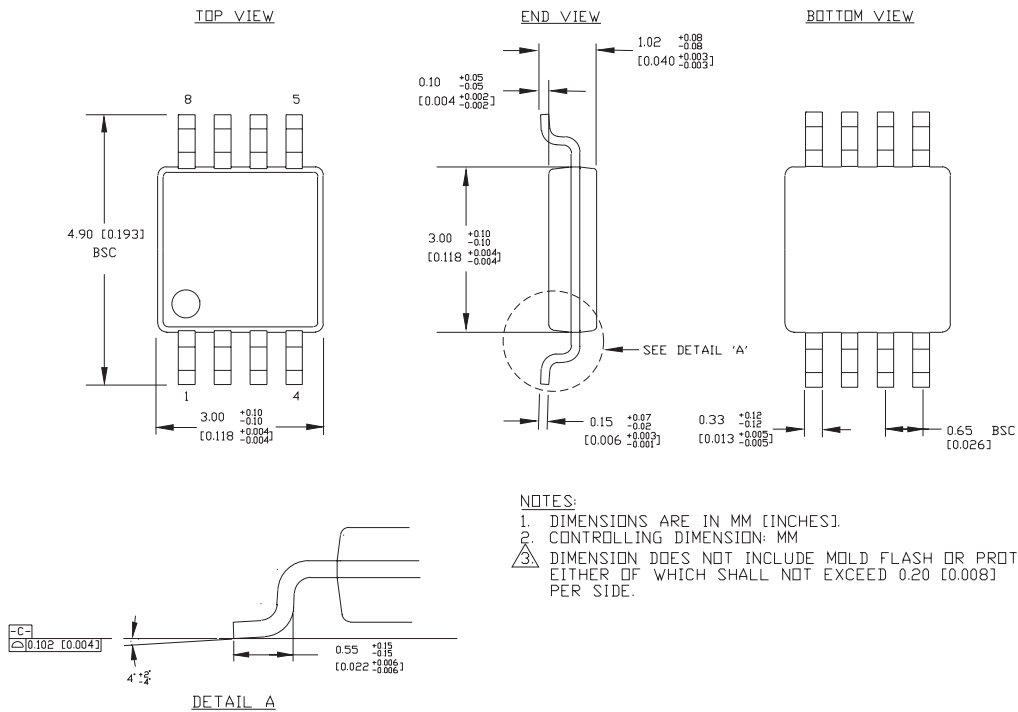


Figure 1.  $f_{MAX}$  and RMS Jitter

**8 LEAD MSOP (K8-1)**

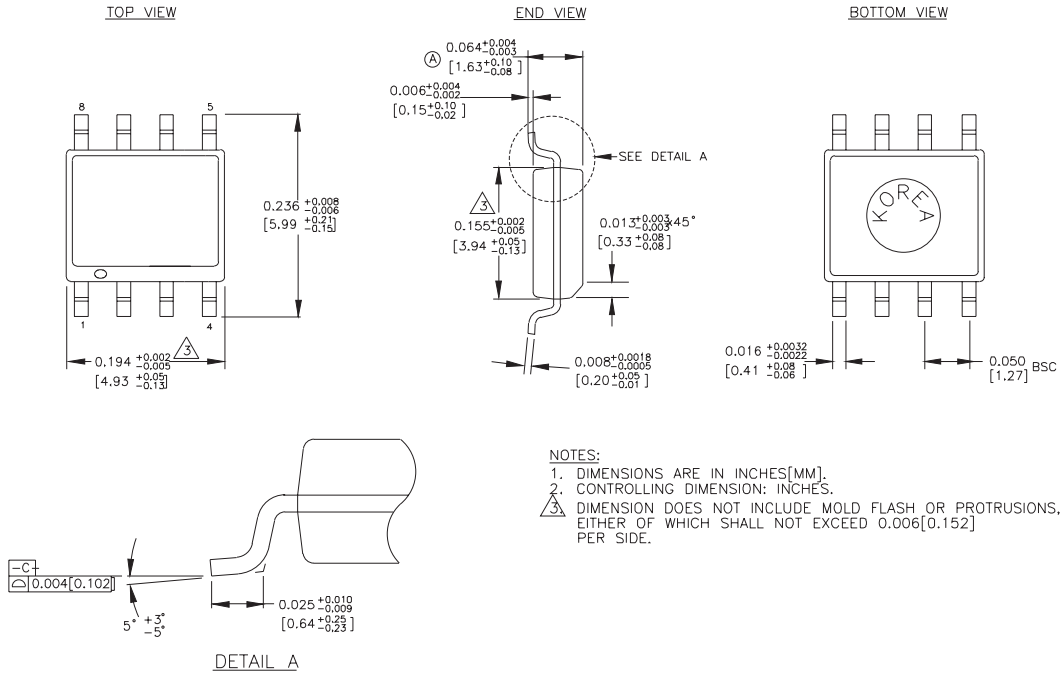


NOTES:  
 1. DIMENSIONS ARE IN MM [INCHES]  
 2. CONTROLLING DIMENSION: MM  
 3. DIMENSION DOES NOT INCLUDE MOLD FLASH OR PROTRUSIONS, EITHER OF WHICH SHALL NOT EXCEED 0.20 [0.008] PER SIDE.

Rev. 01



**8 LEAD SOIC .150" WIDE (Z8-1)**



Rev. 03

**MICREL, INC. 2180 FORTUNE DRIVE SAN JOSE, CA 95131 USA**

TEL + 1 (408) 944-0800 FAX + 1 (408) 474-1000 WEB <http://www.micrel.com>

The information furnished by Micrel in this datasheet is believed to be accurate and reliable. However, no responsibility is assumed by Micrel for its use. Micrel reserves the right to change circuitry and specifications at any time without notification to the customer.

Micrel Products are not designed or authorized for use as components in life support appliances, devices or systems where malfunction of a product can reasonably be expected to result in personal injury. Life support devices or systems are devices or systems that (a) are intended for surgical implant into the body or (b) support or sustain life, and whose failure to perform can be reasonably expected to result in a significant injury to the user. A Purchaser's use or sale of Micrel Products for use in life support appliances, devices or systems is at Purchaser's own risk and Purchaser agrees to fully indemnify Micrel for any damages resulting from such use or sale.

© 2005 Micrel, Incorporated.

Компания «Life Electronics» занимается поставками электронных компонентов импортного и отечественного производства от производителей и со складов крупных дистрибьюторов Европы, Америки и Азии.

С конца 2013 года компания активно расширяет линейку поставок компонентов по направлению коаксиальный кабель, кварцевые генераторы и конденсаторы (керамические, пленочные, электролитические), за счёт заключения дистрибьюторских договоров

Мы предлагаем:

- Конкурентоспособные цены и скидки постоянным клиентам.
- Специальные условия для постоянных клиентов.
- Подбор аналогов.
- Поставку компонентов в любых объемах, удовлетворяющих вашим потребностям.
- Приемлемые сроки поставки, возможна ускоренная поставка.
- Доставку товара в любую точку России и стран СНГ.
- Комплексную поставку.
- Работу по проектам и поставку образцов.
- Формирование склада под заказчика.
- Сертификаты соответствия на поставляемую продукцию (по желанию клиента).
- Тестирование поставляемой продукции.
- Поставку компонентов, требующих военную и космическую приемку.
- Входной контроль качества.
- Наличие сертификата ISO.

В составе нашей компании организован Конструкторский отдел, призванный помогать разработчикам, и инженерам.

Конструкторский отдел помогает осуществить:

- Регистрацию проекта у производителя компонентов.
- Техническую поддержку проекта.
- Защиту от снятия компонента с производства.
- Оценку стоимости проекта по компонентам.
- Изготовление тестовой платы монтаж и пусконаладочные работы.



Тел: +7 (812) 336 43 04 (многоканальный)

Email: [org@lifeelectronics.ru](mailto:org@lifeelectronics.ru)