

# General Specifications

## Electrical Capacity (Resistive Load)

**Logic Level:** 0.4VA maximum @ 28V AC/DC maximum  
(Applicable Range 0.1mA ~ 0.1A @ 20mV ~ 28V)  
Note: Find additional explanation of operating range in Supplement section.

## Other Ratings

**Contact Resistance:** 50 milliohms maximum  
**Insulation Resistance:** 500 megohms minimum @ 500V DC  
**Dielectric Strength:** 500V AC minimum for 1 minute minimum  
**Mechanical Life:** 50,000 operations minimum  
**Electrical Life:** 50,000 operations minimum  
**Nominal Operating Force:** 2.55N  
**Contact Timing:** Nonshorting (break-before-make)  
**Travel:** Pretravel .028" (0.7mm); Overtravel .016" (0.4mm); Total Travel .043" (1.1mm)

## Materials & Finishes

**Plunger:** Polyacetal  
**Case Housing:** Glass fiber reinforced polyamide  
**Support Bracket:** Tin plated phosphor bronze  
**Movable Contact:** Phosphor bronze with gold plating  
**Stationary Contacts:** Brass with gold plating  
**Terminals:** Brass with gold plating

## Environmental Data

**Operating Temp Range:** -30°C through +85°C (-22°F through +185°F)  
**Humidity:** 90 ~ 95% humidity for 96 hours @ 40°C (104°F)  
**Vibration:** 10 ~ 55Hz with peak-to-peak amplitude of 1.5mm traversing the frequency range & returning in 1 minute; 3 right angled directions for 2 hours  
**Shock:** 50G (490m/s<sup>2</sup>) acceleration (tested in 6 right angled directions, with 5 shocks in each direction)

## Installation

**Cap Installation Force:** 49.03N (11.2 lbf) maximum downward force on actuator

## PCB Processing

**Soldering:** Wave Soldering Recommended: See Profile A in Supplement section.  
Manual Soldering: See Profile B in Supplement section.  
**Cleaning:** Automated cleaning. See Cleaning specifications in Supplement section.

## Standards & Certifications

The AB Series pushbuttons have not been tested for UL recognition or CSA certification. These switches are designed for use in a low-voltage, low-current, logic-level circuit. When used as intended in a logic-level circuit, the results do not produce hazardous energy.

# Distinctive Characteristics

Subminiature size (1/3 size of Series M switches) saves space on PC boards.

Specifically developed for logic-level applications.

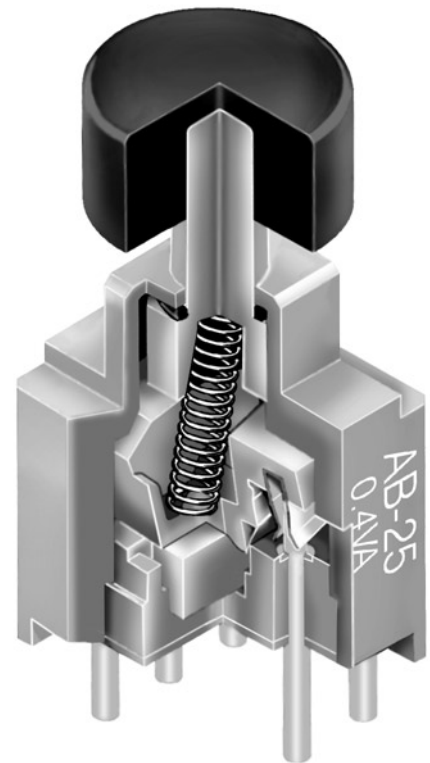
Totally sealed body construction prevents contact contamination and allows time- and money-saving automated soldering and cleaning.

Award-winning STC contact mechanism with benefits unavailable in conventional mechanisms: smoother, positive detent actuation, increased contact stability and unparalleled logic-level reliability. (Additional STC details in Terms & Acronyms; see Supplement section.)

Molded-in, epoxy sealed or ultrasonically welded terminals lock out flux, solvents, and other contaminants.

.100" x .100" (2.54mm x 2.54mm) terminal spacing conforms to standard PC board grid spacing.

Matching indicators available.



Actual Size



- Supplement
- Accessories
- Indicators
- Touch
- Tilt
- Tactiles
- Slides
- Rotaries
- Keylocks
- Programmable
- Illuminated PB
- Pushbuttons
- Rockers
- Toggles

### TYPICAL SWITCH ORDERING EXAMPLE



### DESCRIPTION FOR TYPICAL ORDERING EXAMPLE

#### AB25AP-HA



Toggles  
 Rockers  
 Pushbuttons  
 Illuminated PB  
 Programmable  
 Keylocks  
 Rotaries  
 Slides  
 Tactiles  
 Tilt  
 Touch  
 Indicators  
 Accessories  
 Supplement

## POLES & CIRCUITS

| Pole | Model | Plunger Position<br>( ) = Momentary |          | Connected Terminals |             | Throw & Schematics   |
|------|-------|-------------------------------------|----------|---------------------|-------------|--|
|      |       | Normal                              | Down     | Normal              | Down        |  |
| SP   | AB11  | OFF<br>                             | (ON)<br> | OPEN<br>            | 3-1<br>     | Note: Terminal numbers are not actually on the switch.<br>SPST |
| SP   | AB15  | ON<br>                              | (ON)<br> | 2-3<br>             | 2-1<br>     | SPDT   |
| DP   | AB25  | ON<br>                              | (ON)<br> | 2-3 5-6<br>         | 2-1 5-4<br> | DPDT   |

## PLUNGERS

**A** .213" (5.4mm)  
Long



**B** .183" (4.6mm)  
Long  
(on SP only)



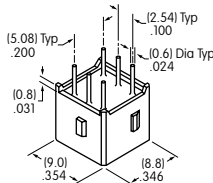
**C** .080" (2.03mm)  
Long  
(on SP only)



Standard Plunger Color: White      Contact factory for red or black options.

## PC TERMINALS

**P** Straight



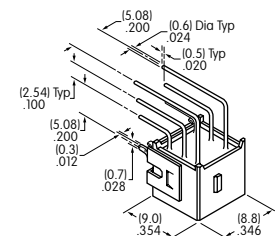
**B** Straight  
with Bracket



**H** Right Angle  
with Bracket



**V** Vertical  
with Bracket



Use of a support bracket is recommended to increase PCB mounting strength and stability.  
B1 & V1 terminal dimensions appear on the pushbutton drawings which follow.

## SLIP-ON CAPS

**F** AT475  
.201" (5.1mm) Diameter Cap

Material: Polyamide  
For use with  
plungers A & B only.



**H** AT496  
.295" (7.5mm) Diameter Cap

Material: Polyamide  
For use with  
plungers A & B only.



Colors Available:

**A** Black

**B** White

**C** Red

Toggles  
Rockers  
Pushbuttons  
Illuminated PB  
Programmable  
Keylocks  
Rotaries  
Slides  
Tactiles  
Tilt  
Touch  
Indicators  
Accessories  
Supplement

## TYPICAL SWITCH DIMENSIONS

### Straight PC

### Single Pole



AB15AP-FA

AB11 model does not have terminal 2.

### Straight PC

### Double Pole



AB25AP-FA

### Straight PC • Bracket

### Single Pole



AB15AB-FA

B Terminals

B1 Terminals

### Straight PC • Bracket

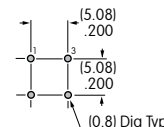
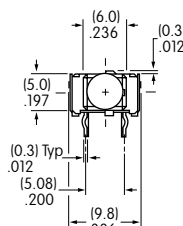
### Double Pole



AB25AB-FA

### Right Angle PC

### Single Pole (Single Throw)



AB11AH-FA

## TYPICAL SWITCH DIMENSIONS

### Single Pole (Double Throw)



### Right Angle PC



AB15AH-FA

### Double Pole



### Right Angle PC



AB25AH-FA

### Single Pole

### Vertical PC • Inline Bracket



AB11 model does not have terminal 2. AB11AV1-FA

### Single Pole

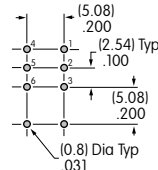
### Vertical PC



AB11 model does not have terminal 2. AB15AV-FA

### Double Pole

### Vertical PC



AB25AV-FA

Компания «Life Electronics» занимается поставками электронных компонентов импортного и отечественного производства от производителей и со складов крупных дистрибьюторов Европы, Америки и Азии.

С конца 2013 года компания активно расширяет линейку поставок компонентов по направлению коаксиальный кабель, кварцевые генераторы и конденсаторы (керамические, пленочные, электролитические), за счёт заключения дистрибьюторских договоров

Мы предлагаем:

- Конкуренспособные цены и скидки постоянным клиентам.
- Специальные условия для постоянных клиентов.
- Подбор аналогов.
- Поставку компонентов в любых объемах, удовлетворяющих вашим потребностям.
- Приемлемые сроки поставки, возможна ускоренная поставка.
- Доставку товара в любую точку России и стран СНГ.
- Комплексную поставку.
- Работу по проектам и поставку образцов.
- Формирование склада под заказчика.
- Сертификаты соответствия на поставляемую продукцию (по желанию клиента).
- Тестирование поставляемой продукции.
- Поставку компонентов, требующих военную и космическую приемку.
- Входной контроль качества.
- Наличие сертификата ISO.

В составе нашей компании организован Конструкторский отдел, призванный помогать разработчикам, и инженерам.

Конструкторский отдел помогает осуществить:

- Регистрацию проекта у производителя компонентов.
- Техническую поддержку проекта.
- Защиту от снятия компонента с производства.
- Оценку стоимости проекта по компонентам.
- Изготовление тестовой платы монтаж и пусконаладочные работы.



Тел: +7 (812) 336 43 04 (многоканальный)  
Email: [org@lifeelectronics.ru](mailto:org@lifeelectronics.ru)