



SAW Components

SAW Rx Filter

Low Loss Filter for Mobile Telephone PCS system

Series/type:	B4150
Ordering code:	B39202B4150U410
Date:	November 24, 2009
Version:	2.0



Data sheet



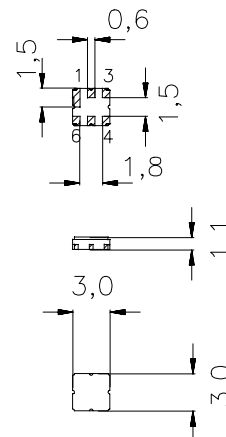
Application

- Low-loss RF filter for mobile telephone, receive path
PCS systems, receive path
- Usable passband of 60MHz
- No matching required for operation at 50 Ω



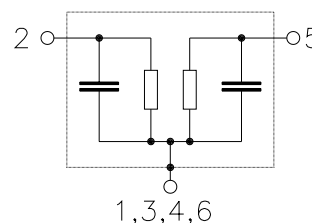
Features

- Package size 3.0x 3.0 x 1.1 mm³
- Package code DCC6C
- Approx. weight 0.037 g
- Ceramic package for **Surface Mount Technology (SMT)**
- RoHS compliant
- Ni, gold-plated



Pin configuration

- 2 Input
- 1,3 To be ground
- 5 Output
- 4,6 To be ground





SAW Components	B4150
SAW Rx Filter	1960.0 MHz

Data sheet



Characteristics

Temperature range for specification: $T = 25 \pm 2^\circ\text{C}$
 Terminating source impedance: $Z_S = 50 \Omega$
 Terminating load impedance: $Z_L = 50 \Omega$

		min.	typ. @ 25 °C	max.	
Center frequency	f_C	—	1960.0	—	MHz
Maximum insertion attenuation	α_{\max}	—	2.8	3.5	dB
1930.0 ... 1990.0 MHz					
Amplitude ripple (p-p)	$\Delta\alpha$	—	0.9	1.6	dB
1930.0 ... 1990.0 MHz					
Input return loss		9.5	10.5	—	dB
1930.0 ... 1990.0 MHz					
Output return loss		9.5	10.5	—	dB
1930.0 ... 1990.0 MHz					
Attenuation	α				
10.0 ... 1850.0 MHz		20	21	—	dB
1850.0 ... 1910.0 MHz		21	30	—	dB
2040.0 ... 2100.0 MHz		25	27	—	dB
2100.0 ... 5000.0 MHz		20	25	—	dB
5000.0 ... 6000.0 MHz		8	18	—	dB



Data sheet



Characteristics

Temperature range for specification: $T = -30$ to $+80$ °C
 Terminating source impedance: $Z_S = 50 \Omega$
 Terminating load impedance: $Z_L = 50 \Omega$

		min.	typ. @ 25 °C	max.	
Center frequency	f_C	—	1960.0	—	MHz
Maximum insertion attenuation	α_{max}	—	3.2	5.3	dB
1930.0 ... 1990.0 MHz					
Amplitude ripple (p-p)	$\Delta\alpha$	—	1.2	3.2	dB
1930.0 ... 1990.0 MHz					
Input return loss		9.5	10.5	—	dB
1930.0 ... 1990.0 MHz					
Output return loss		9.5	10.5	—	dB
1930.0 ... 1990.0 MHz					
Attenuation	α	20	21	—	dB
10.0 ... 1850.0 MHz		15	30	—	
1850.0 ... 1910.0 MHz		25	27	—	
2040.0 ... 2100.0 MHz		20	25	—	
2100.0 ... 5000.0 MHz		8	18	—	
5000.0 ... 6000.0 MHz					



SAW Components

B4150

SAW Rx Filter

1960.0 MHz

Data sheet



Characteristics

Temperature range for specification: $T = -30$ to $+85$ °C
 Terminating source impedance: $Z_S = 50 \Omega$
 Terminating load impedance: $Z_L = 50 \Omega$

		min.	typ. @ 25 °C	max.	
Center frequency	f_C	—	1960.0	—	MHz
Maximum insertion attenuation	α_{max}	—	3.2	5.3	dB
1930.0 ... 1990.0 MHz					
Amplitude ripple (p-p)	$\Delta\alpha$	—	1.2	3.2	dB
1930.0 ... 1990.0 MHz					
Input return loss		9.0	10.5	—	dB
1930.0 ... 1990.0 MHz					
Output return loss		9.0	10.5	—	dB
1930.0 ... 1990.0 MHz					
Attenuation	α	20	21	—	dB
10.0 ... 1850.0 MHz		14	30	—	
1850.0 ... 1910.0 MHz		25	27	—	
2040.0 ... 2100.0 MHz		20	25	—	
2100.0 ... 5000.0 MHz		8	18	—	



SAW Components	B4150
-----------------------	--------------

SAW Rx Filter	1960.0 MHz
----------------------	-------------------

Data sheet



Maximum ratings

Operable temperature range	T	-30 / +85	°C	source and load impedance 50 Ω peak power of TDMA signal, duty cycle 1 : 3 continuous wave
Storage temperature range	T _{stg}	-40 / +85	°C	
DC voltage	V _{DC}	0	V	
Input power max 1930.0...1990.0 MHz	P _{IN}	13	dBm	
		10	dBm	



SAW Components

B4150

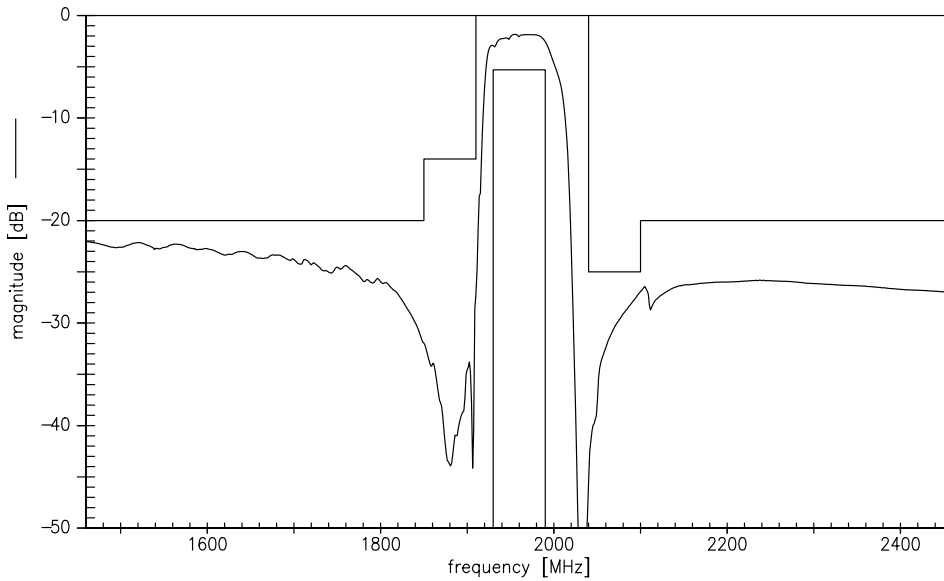
SAW Rx Filter

1960.0 MHz

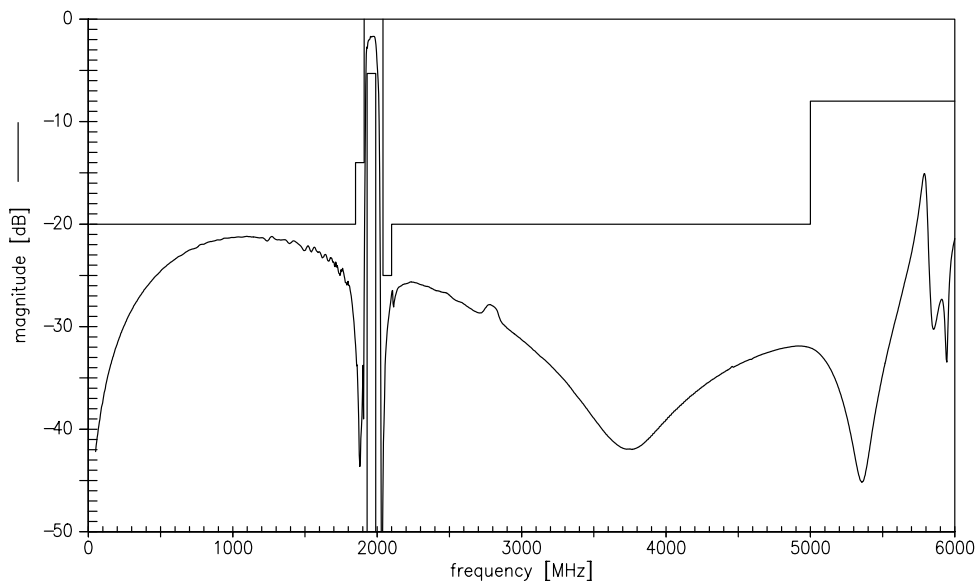
Data sheet



Transfer function (narrowband)



Transfer function (wideband)



Please read *cautions and warnings and important notes* at the end of this document.

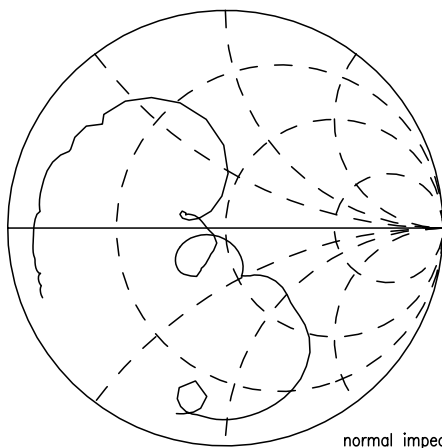


Data sheet

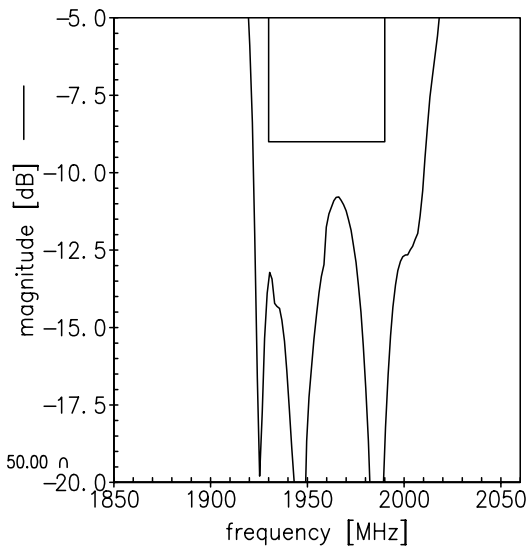


Smith charts

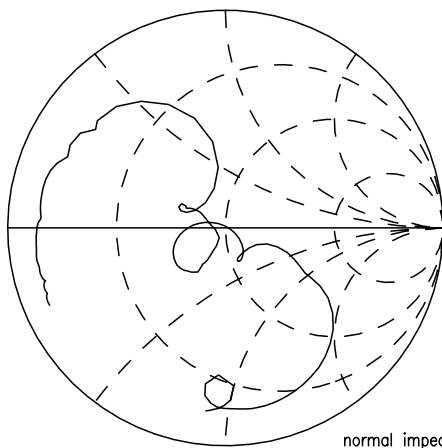
S₁₁ function



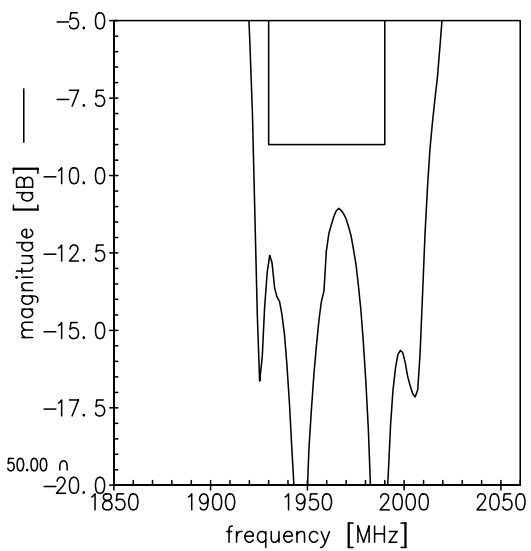
normal impedance: 50.00 Ω



S₂₂ function



normal impedance: 50.00 Ω





SAW Components

B4150

SAW Rx Filter

1960.0 MHz

Data sheet



References

Type	B4150
Ordering code	B39202B4150U410
Marking and package	C61157-A7-A67
Packaging	F61074-V8088-Z000
Date codes	L_1126
S-parameters	B4150_NB.s2p B4150_WB.s2p See file header for port/pin assignment table
Soldering profile	S_6001
RoHS compatible	defined as compatible with the following documents: "DIRECTIVE 2002/95/EC OF THE EUROPEAN PARLIAMENT AND OF THE COUNCIL of 27 January 2003 on the restriction of the use of certain hazardous substances in electrical and electronic equipment. 2005/618/EC from April 18th, 2005, amending Directive 2002/95/EC of the European Parliament and of the Council for the purposes of establishing the maximum concentration values for certain hazardous substances in electrical and electronic equipment."

For further information please contact your local EPCOS sales office or visit our webpage at www.epcos.com.

Published by EPCOS AG
Surface Acoustic Wave Components Division
P.O. Box 80 17 09, 81617 Munich, GERMANY

© EPCOS AG 2009. This brochure replaces the previous edition.

For questions on technology, prices and delivery please contact the Sales Offices of EPCOS AG or the international Representatives.

Due to technical requirements components may contain dangerous substances. For information on the type in question please also contact one of our Sales Offices.

Please read *cautions and warnings and important notes* at the end of this document.



Important notes

The following applies to all products named in this publication:

1. Some parts of this publication contain **statements about the suitability of our products for certain areas of application**. These statements are based on our knowledge of typical requirements that are often placed on our products in the areas of application concerned. We nevertheless expressly point out **that such statements cannot be regarded as binding statements about the suitability of our products for a particular customer application**. As a rule, EPCOS is either unfamiliar with individual customer applications or less familiar with them than the customers themselves. For these reasons, it is always ultimately incumbent on the customer to check and decide whether an EPCOS product with the properties described in the product specification is suitable for use in a particular customer application.
2. We also point out that **in individual cases, a malfunction of electronic components or failure before the end of their usual service life cannot be completely ruled out in the current state of the art, even if they are operated as specified**. In customer applications requiring a very high level of operational safety and especially in customer applications in which the malfunction or failure of an electronic component could endanger human life or health (e.g. in accident prevention or life-saving systems), it must therefore be ensured by means of suitable design of the customer application or other action taken by the customer (e.g. installation of protective circuitry or redundancy) that no injury or damage is sustained by third parties in the event of malfunction or failure of an electronic component.
3. **The warnings, cautions and product-specific notes must be observed.**
4. In order to satisfy certain technical requirements, **some of the products described in this publication may contain substances subject to restrictions in certain jurisdictions (e.g. because they are classed as hazardous)**. Useful information on this will be found in our Material Data Sheets on the Internet (www.epcos.com/material). Should you have any more detailed questions, please contact our sales offices.
5. We constantly strive to improve our products. Consequently, **the products described in this publication may change from time to time**. The same is true of the corresponding product specifications. Please check therefore to what extent product descriptions and specifications contained in this publication are still applicable before or when you place an order. We also **reserve the right to discontinue production and delivery of products**. Consequently, we cannot guarantee that all products named in this publication will always be available. The aforementioned does not apply in the case of individual agreements deviating from the foregoing for customer-specific products.
6. Unless otherwise agreed in individual contracts, **all orders are subject to the current version of the "General Terms of Delivery for Products and Services in the Electrical Industry" published by the German Electrical and Electronics Industry Association (ZVEI)**.
7. The trade names EPCOS, BAOKE, Alu-X, CeraDiode, CSMP, CSSP, CTVS, DeltaCap, DSSP, MiniBlue, MiniCell, MKK, MLSC, MotorCap, PCC, PhaseCap, PhaseCube, PhaseMod, PhiCap, SIFERRIT, SIFI, SIKOREL, SilverCap, SIMDAD, SIMID, SineFormer, SIOV, SIP5D, SIP5K, ThermoFuse, WindCap are **trademarks registered or pending** in Europe and in other countries. Further information will be found on the Internet at www.epcos.com/trademarks.

Компания «Life Electronics» занимается поставками электронных компонентов импортного и отечественного производства от производителей и со складов крупных дистрибьюторов Европы, Америки и Азии.

С конца 2013 года компания активно расширяет линейку поставок компонентов по направлению коаксиальный кабель, кварцевые генераторы и конденсаторы (керамические, пленочные, электролитические), за счёт заключения дистрибьюторских договоров

Мы предлагаем:

- Конкурентоспособные цены и скидки постоянным клиентам.
- Специальные условия для постоянных клиентов.
- Подбор аналогов.
- Поставку компонентов в любых объемах, удовлетворяющих вашим потребностям.
- Приемлемые сроки поставки, возможна ускоренная поставка.
- Доставку товара в любую точку России и стран СНГ.
- Комплексную поставку.
- Работу по проектам и поставку образцов.
- Формирование склада под заказчика.
- Сертификаты соответствия на поставляемую продукцию (по желанию клиента).
- Тестирование поставляемой продукции.
- Поставку компонентов, требующих военную и космическую приемку.
- Входной контроль качества.
- Наличие сертификата ISO.

В составе нашей компании организован Конструкторский отдел, призванный помогать разработчикам, и инженерам.

Конструкторский отдел помогает осуществить:

- Регистрацию проекта у производителя компонентов.
- Техническую поддержку проекта.
- Защиту от снятия компонента с производства.
- Оценку стоимости проекта по компонентам.
- Изготовление тестовой платы монтаж и пусконаладочные работы.



Тел: +7 (812) 336 43 04 (многоканальный)
Email: org@lifeelectronics.ru