

G3VM-41LR5

MOS FET Relays

World's Smallest* SSOP Package MOS FET Relays with Low Output Capacitance and ON Resistance ($C \times R = 10 \text{ pF} \cdot \Omega$) in a 40-V Load Voltage Model.

• ON resistance of 1Ω (typical) suppresses output signal attenuation.

* As of March 2011 Survey by OMRON



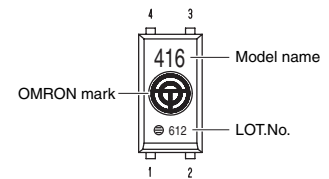
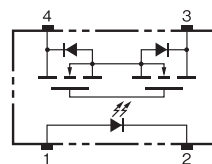
Note: The actual product is marked differently from the image shown here.

RoHS compliant

Application Examples

- Semiconductor test equipment
- Test & Measurement equipment
- Communication equipment
- Data loggers

Terminal Arrangement/Internal Connections



Note: The actual product is marked differently from the image shown here.

List of Models

| Package type | Contact form | Terminals | Load voltage (peak value) * | Model | Minimum package quantity |
|--------------|--------------|----------------------------|-----------------------------|-------------------|--------------------------|
| | | | | | Number per tape and reel |
| SSOP4 | 1a (SPST-NO) | Surface-mounting Terminals | 40 V | G3VM-41LR5 | - |
| | | | | G3VM-41LR5 (TR05) | 500 |
| | | | | G3VM-41LR5 (TR10) | 1,000 |
| | | | | G3VM-41LR5 (TR) | 1,500 |

Note: Ask your OMRON representative for orders under 1,500 pcs, 1,000 pcs, or 500 pcs. We can supply products with the tape already cut.

Tape-cut SSOPs are packaged without humidity resistance. Use manual soldering to mount them.

Refer to common precautions.

* The AC peak and DC value are given for the load voltage.

Absolute Maximum Ratings ($T_a = 25 \text{ }^\circ\text{C}$)

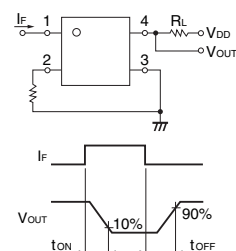
| Item | Symbol | Rating | Unit | Measurement conditions | |
|---|--------------------------------------|-------------------------------|------------------|-------------------------------|--------------------------------------|
| Input | LED forward current | I_F | 50 | mA | |
| | LED forward current reduction rate | $\Delta I_F / ^\circ\text{C}$ | -0.5 | mA/ $^\circ\text{C}$ | $T_a \geq 25 \text{ }^\circ\text{C}$ |
| | LED reverse voltage | V_R | 5 | V | |
| | Connection temperature | T_J | 125 | $^\circ\text{C}$ | |
| Output | Load voltage (AC peak/DC) | V_{OFF} | 40 | V | |
| | Continuous load current (AC peak/DC) | I_o | 300 | mA | |
| | ON current reduction rate | $\Delta I_o / ^\circ\text{C}$ | -3.0 | mA/ $^\circ\text{C}$ | $T_a \geq 25 \text{ }^\circ\text{C}$ |
| | Connection temperature | T_J | 125 | $^\circ\text{C}$ | |
| Dielectric strength between I/O (See note 1.) | V_{I-O} | 1500 | V_{rms} | AC for 1 min | |
| Ambient operating temperature | T_a | -20 to +85 | $^\circ\text{C}$ | With no icing or condensation | |
| Ambient storage temperature | T_{stg} | -40 to +125 | $^\circ\text{C}$ | With no icing or condensation | |
| Soldering temperature | - | 260 | $^\circ\text{C}$ | 10 s | |

Note: 1. The dielectric strength between the input and output was checked by applying voltage between all pins as a group on the LED side and all pins as a group on the light-receiving side.

Electrical Characteristics ($T_a = 25 \text{ }^\circ\text{C}$)

| Item | Symbol | Minimum | Typical | Maximum | Unit | Measurement conditions | |
|---------------|---|------------|---------|---------|------|--|---|
| Input | LED forward voltage | V_F | 1.0 | 1.15 | 1.3 | V | $I_F = 10 \text{ mA}$ |
| | Reverse current | I_R | - | - | 10 | μA | $V_R = 5 \text{ V}$ |
| | Capacity between terminals | C_T | - | 15 | - | pF | $V = 0, f = 1 \text{ MHz}$ |
| | Trigger LED forward current | I_{FT} | - | - | 4 | mA | $I_o = 100 \text{ mA}$ |
| Output | Maximum resistance with output ON | R_{ON} | - | 1.0 | 1.5 | Ω | $I_F = 5 \text{ mA}, I_o = 300 \text{ mA}, t = 10 \text{ ms}$ |
| | Current leakage when the relay is open | I_{LEAK} | - | - | 1.0 | nA | $V_{OFF} = 30 \text{ V}, T_a = 50 \text{ }^\circ\text{C}$ |
| | Capacity between terminals | C_{OFF} | - | 10 | 14 | pF | $V = 0, f = 100 \text{ MHz}, t < 1 \text{ s}$ |
| | Capacity between I/O terminals | C_{I-O} | - | 0.8 | - | pF | $f = 1 \text{ MHz}, V_s = 0 \text{ V}$ |
| | Insulation resistance between I/O terminals | R_{I-O} | 1000 | - | - | M Ω | $V_{I-O} = 500 \text{ VDC}, \text{RoH} \leq 60 \%$ |
| Turn-ON time | t_{ON} | - | 0.2 | 0.5 | ms | $I_F = 5 \text{ mA}, R_L = 200 \Omega,$ $V_{DD} = 10 \text{ V}$ (See note 2.) | |
| Turn-OFF time | t_{OFF} | - | 0.2 | 0.5 | ms | | |

Note: 2. Turn-ON and Turn-OFF Times



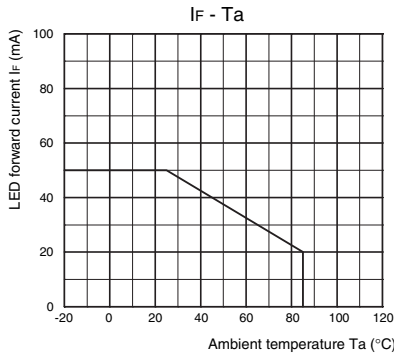
Recommended Operating Conditions

Use the G3VM under the following conditions so that the Relay will operate properly.

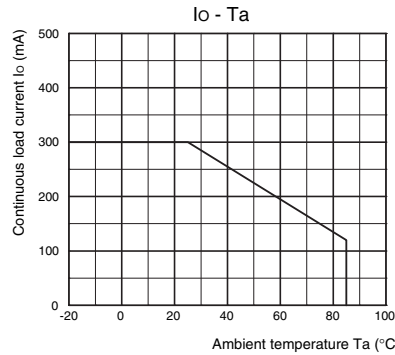
| Item | Symbol | Minimum | Typical | Maximum | Unit |
|--------------------------------------|-----------------|---------|---------|---------|------|
| Load voltage (AC peak/DC) | V _{DD} | - | - | 32 | V |
| Operating LED forward current | I _F | 10 | - | 30 | mA |
| Continuous load current (AC peak/DC) | I _O | - | - | 300 | mA |
| Ambient operating temperature | T _a | 25 | - | 60 | °C |

Engineering Data

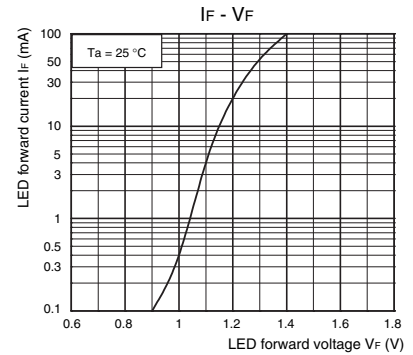
LED forward current vs. Ambient temperature



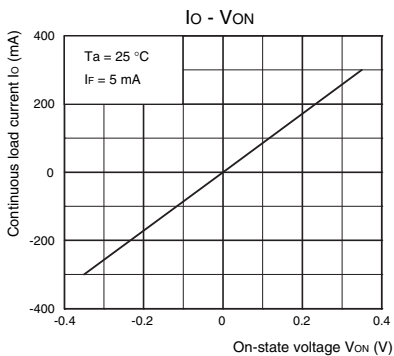
Continuous load current vs. Ambient temperature



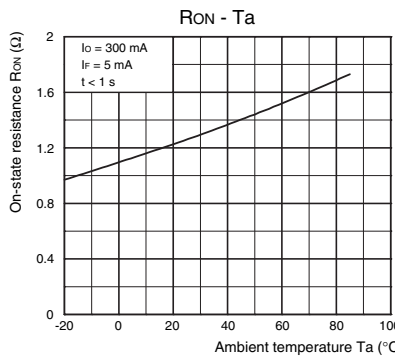
LED forward current vs. LED forward voltage



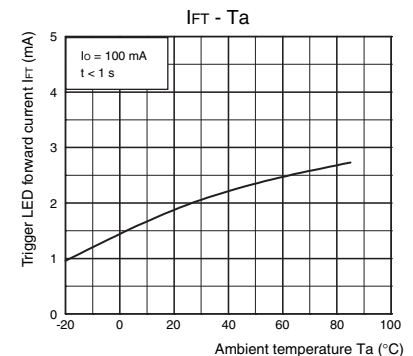
Continuous load current vs. On-state voltage



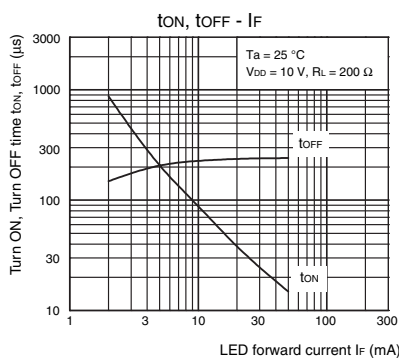
On-state resistance vs. Ambient temperature



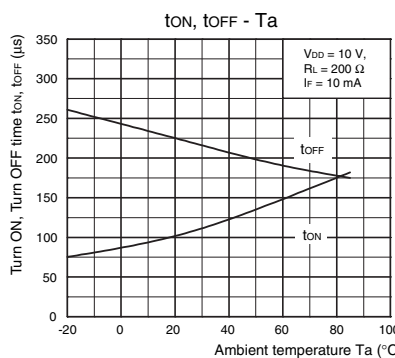
Trigger LED forward current vs. Ambient temperature



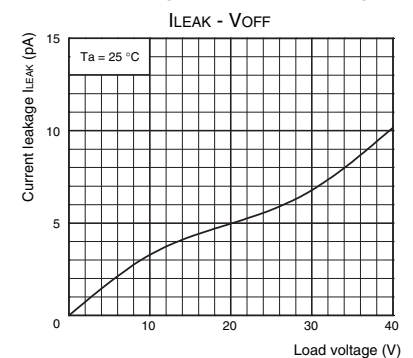
Turn ON, Turn OFF time vs. LED forward current



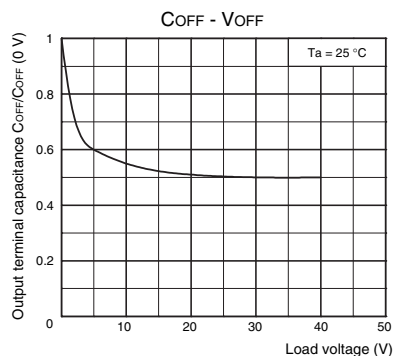
Turn ON, Turn OFF time vs. Ambient temperature



Current leakage vs. Load voltage



Output terminal capacitance vs. Load voltage

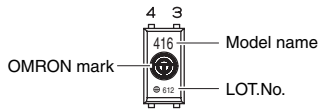


Safety Precautions

- Refer to "Common Precautions" for all G3VM models.

■ Appearance

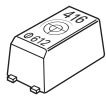
SSOP (Shrink Small Outline Package)
SSOP4



Note: The actual product is marked differently from the image shown here.

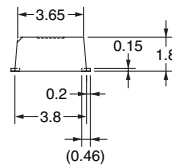
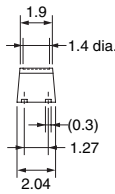
■ Dimensions

(Unit: mm)



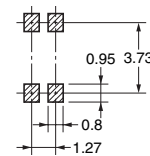
Surface-mounting Terminals

Weight: 0.03 g



Actual Mounting Pad Dimensions

(Recommended Value, TOP VIEW)



Unless otherwise specified, the dimensional tolerance is ± 0.1 mm.

Note: The actual product is marked differently from the image shown here.

- Application examples provided in this document are for reference only. In actual applications, confirm equipment functions and safety before using the product.
- Consult your OMRON representative before using the product under conditions which are not described in the manual or applying the product to nuclear control systems, railroad systems, aviation systems, vehicles, combustion systems, medical equipment, amusement machines, safety equipment, and other systems or equipment that may have a serious influence on lives and property if used improperly. Make sure that the ratings and performance characteristics of the product provide a margin of safety for the system or equipment, and be sure to provide the system or equipment with double safety mechanisms.

Note: Do not use this document to operate the Unit.

Компания «Life Electronics» занимается поставками электронных компонентов импортного и отечественного производства от производителей и со складов крупных дистрибьюторов Европы, Америки и Азии.

С конца 2013 года компания активно расширяет линейку поставок компонентов по направлению коаксиальный кабель, кварцевые генераторы и конденсаторы (керамические, пленочные, электролитические), за счёт заключения дистрибьюторских договоров

Мы предлагаем:

- Конкуренспособные цены и скидки постоянным клиентам.
- Специальные условия для постоянных клиентов.
- Подбор аналогов.
- Поставку компонентов в любых объемах, удовлетворяющих вашим потребностям.
- Приемлемые сроки поставки, возможна ускоренная поставка.
- Доставку товара в любую точку России и стран СНГ.
- Комплексную поставку.
- Работу по проектам и поставку образцов.
- Формирование склада под заказчика.
- Сертификаты соответствия на поставляемую продукцию (по желанию клиента).
- Тестирование поставляемой продукции.
- Поставку компонентов, требующих военную и космическую приемку.
- Входной контроль качества.
- Наличие сертификата ISO.

В составе нашей компании организован Конструкторский отдел, призванный помогать разработчикам, и инженерам.

Конструкторский отдел помогает осуществить:

- Регистрацию проекта у производителя компонентов.
- Техническую поддержку проекта.
- Защиту от снятия компонента с производства.
- Оценку стоимости проекта по компонентам.
- Изготовление тестовой платы монтаж и пусконаладочные работы.



Тел: +7 (812) 336 43 04 (многоканальный)
Email: org@lifeelectronics.ru