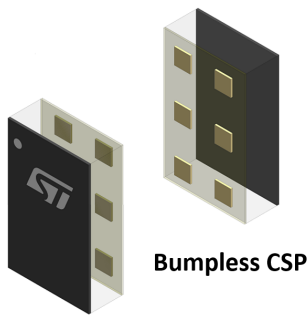
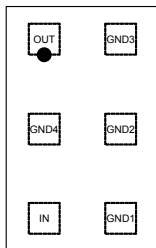


## 2.4 GHz low pass filter matched to STM32WB55Cx/Rx



Top view (pads down)



Product status link

[MLPF-WB55-01E3](#)

### Features

- Integrated impedance matching to STM32WB55Cx and STM32WB55Rx
- LGA footprint compatible
- 50  $\Omega$  nominal impedance on antenna side
- Deep rejection harmonics filter
- Low insertion loss
- Small footprint
- Low thickness  $\leq 450 \mu\text{m}$
- High RF performance
- RF BOM and area reduction
- ECOPACK<sup>®2</sup> compliant

### Applications

- Bluetooth 5
- OpenThread
- Zigbee<sup>®</sup>
- IEEE 802.15.4
- Optimized for STM32WB55Cx and STM32WB55Rx

### Description

The **MLPF-WB55-01E3** integrates an impedance matching network and harmonics filter. The matching impedance network has been tailored to maximize the RF performance of STM32WB55xx. This device uses STMicroelectronics IPD technology on non-conductive glass substrate which optimizes RF performance.

# 1 Characteristics

**Table 1. Absolute ratings ( $T_{amb} = 25\text{ °C}$ )**

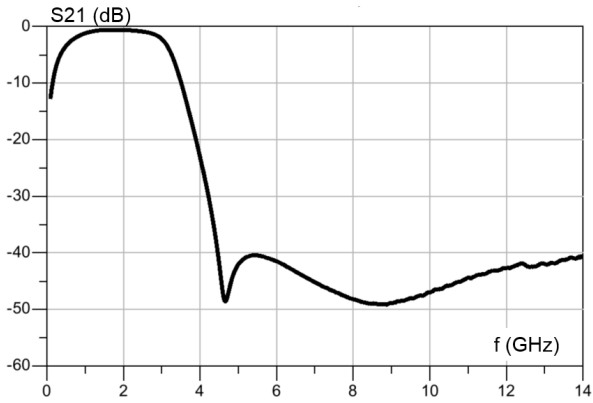
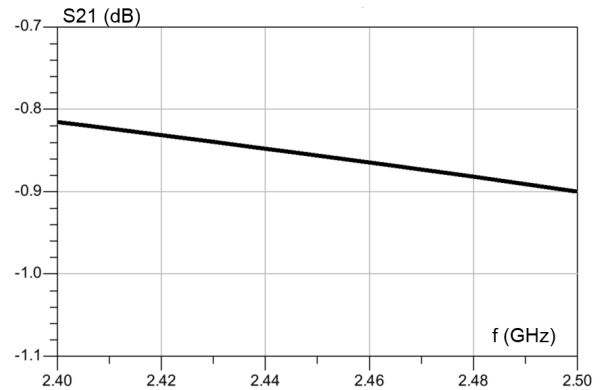
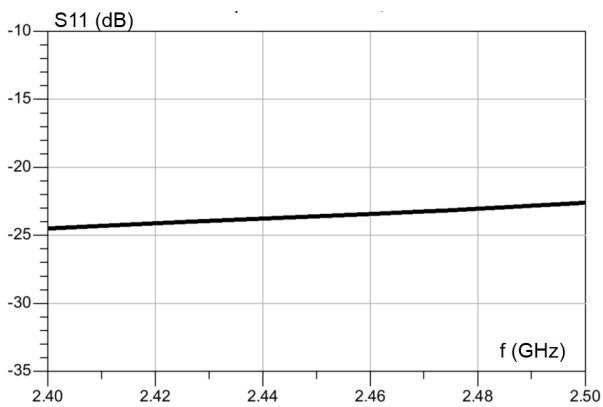
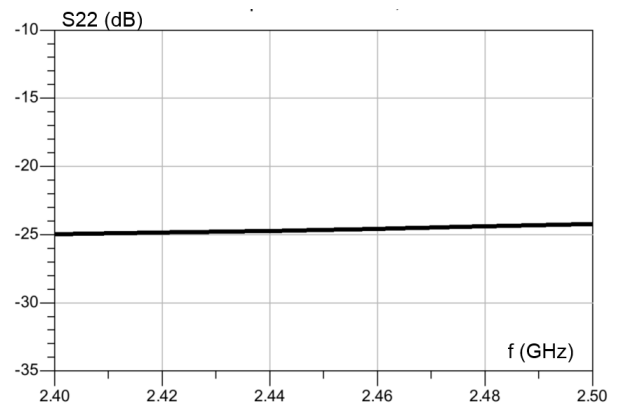
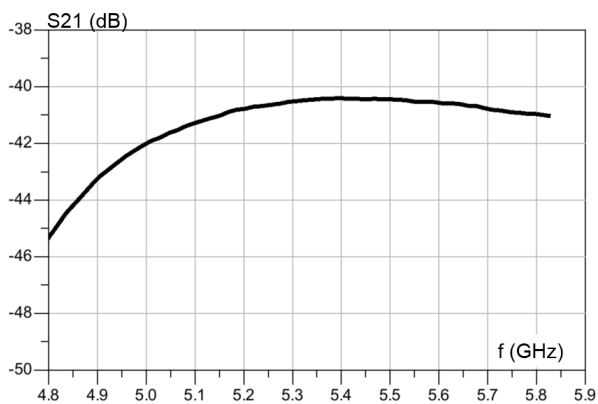
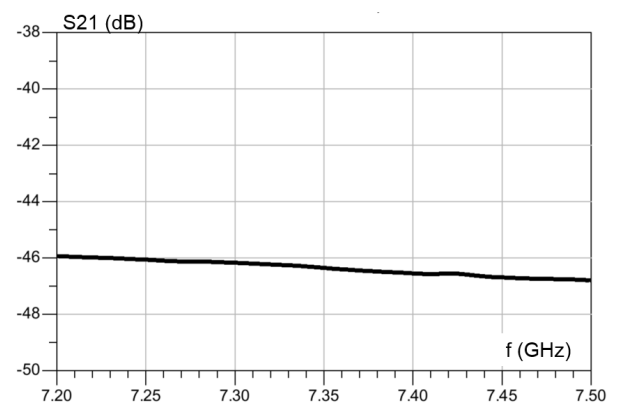
Symbol	Parameter	Value	Unit
$P_{IN}$	Input power $RF_{IN}$	10	dBm
$V_{ESD}$	ESD ratings human body model (JESD22-A114-C), all I/O one at a time while others connected to GND	2000	V
	ESD ratings machine model, all I/O	200	
$T_{OP}$	Maximum operating temperature	-40 to +105	°C

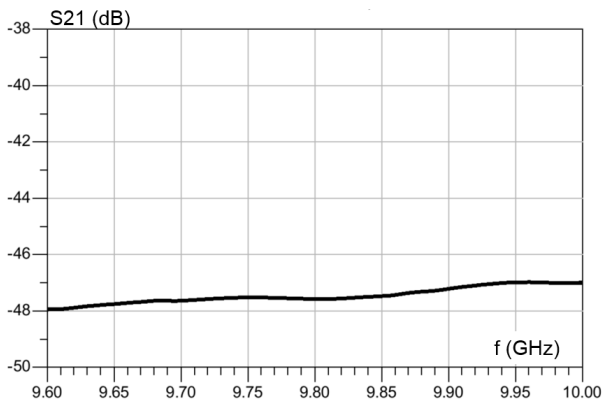
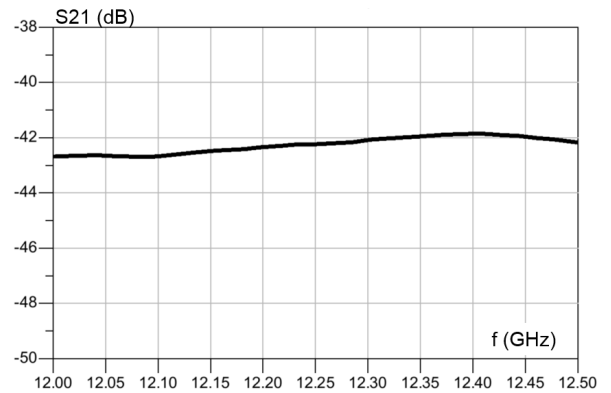
**Table 2. Impedances( $T_{amb} = 25\text{ °C}$ )**

Symbol	Parameter	Value			Unit
		Min.	Typ.	Max.	
$Z_{IN}$	STM32WB55xx single-ended impedance	-	matched to STM32WB55Cx and STM32WB55Rx	-	$\Omega$
$Z_{OUT}$	Antenna impedance	-	50	-	$\Omega$

**Table 3. Electrical characteristics and RF performance ( $T_{amb} = 25\text{ °C}$ )**

Symbol	Parameter	Value			Unit
		Min.	Typ.	Max.	
f	Frequency range	2400		2500	MHz
IL	Insertion loss $ S_{21} $		0.90	1.1	dB
$RL_{IN}$	Input return loss $ S_{11} $	14	22		dB
$RL_{OUT}$	Output return loss $ S_{22} $	16	24		dB
Att	Harmonic rejection levels $ S_{21} $	Attenuation at 2fo	38	40	dB
		Attenuation at 3fo	43	45	dB
		Attenuation at 4fo	41	46	dB
		Attenuation at 5fo	35	42	dB

**1.1 RF measurement**
**Figure 1. Transmission (dB)**

**Figure 2. Insertion loss (dB)**

**Figure 3. Input return loss (dB)**

**Figure 4. Output return loss (dB)**

**Figure 5. Attenuation 2f0 (dB)**

**Figure 6. Attenuation 3f0 (dB)**


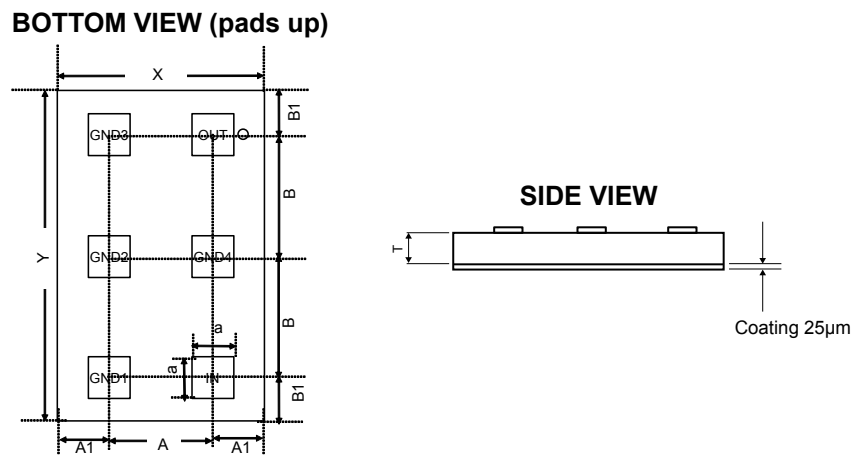
**Figure 7. Attenuation 4f0 (dB)**

**Figure 8. Attenuation 5f0 (dB)**


## 2 Package information

In order to meet environmental requirements, ST offers these devices in different grades of **ECOPACK®** packages, depending on their level of environmental compliance. ECOPACK® specifications, grade definitions and product status are available at: [www.st.com](http://www.st.com). ECOPACK® is an ST trademark.

### 2.1 Bumpless CSP package information

**Figure 9. Bumpless CSP package outline**



**Table 4. Bumpless CSP package mechanical data**

Parameter	Description	Min.	Typ.	Max.	Unit
X	X dimension of the die	975	1000	1025	µm
Y	Y dimension of the die	1575	1600	1625	µm
A	X pitch		500		µm
B	Y pitch		587		µm
A1	Distance from bump to edge of die on X axis		250		µm
B1	Distance from pad to edge of die on Y axis		213		µm
a	Pad dimension		200		µm
T	Substrate thickness	375	400	425	µm

Figure 10. Marking

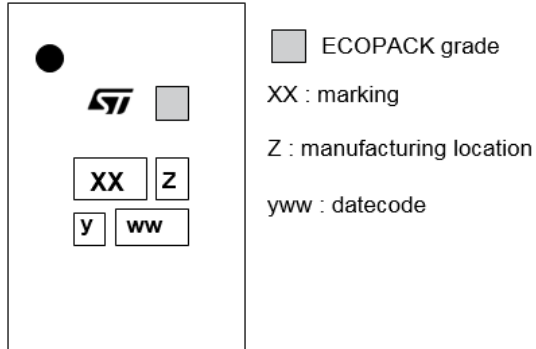
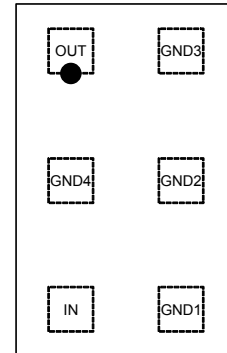


Figure 11. Top view

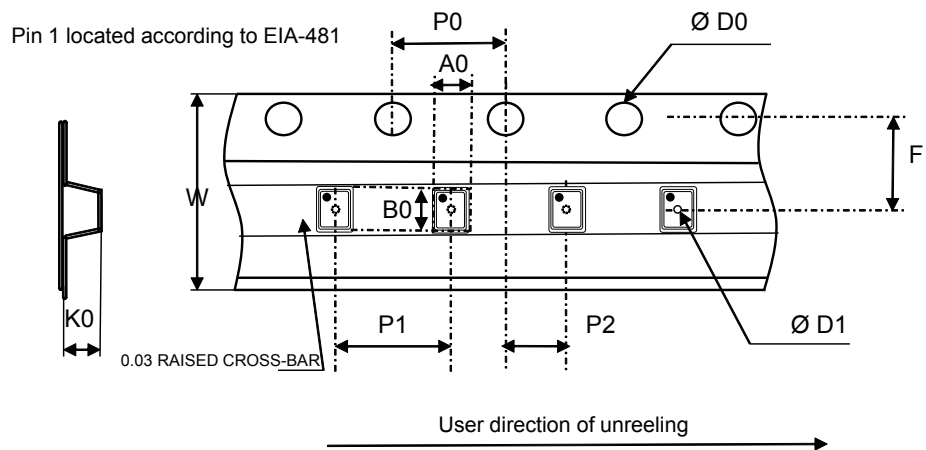
Top view (pads down)



More packing information is available in the application note:

- AN2348 Flip-Chip: "Package description and recommendations for use"

Figure 12. Tape and reel outline



Note: Pocket dimensions are not on scale  
Pocket shape may vary depending on package

**Table 5. Tape and reel mechanical data**

Ref	Dimensions		
	Millimeters		
	Min	Typ	Max
A0	1.04	1.09	1.14
B0	1.64	1.69	1.74
K0	0.47	0.52	0.57
P1	3.9	4.0	4.1
P0	3.9	4.0	4.1
Ø D0	1.4	1.5	1.6
Ø D1	0.35	0.40	0.45
F	3.45	3.50	3.55
P2	1.95	2.00	2.05
W	7.9	8.0	8.3

**Table 6. Pad description top view (pads down)**

Pad ref	Pad name	Description
A1	OUT	Antenna
A2	GND4	Ground
A3	IN	STM32WB55 RF out
B1	GND3	Ground
B2	GND2	Ground
B3	GND1	Ground

### 3 Recommendation on PCB assembly

#### 3.1 Land pattern

Figure 13. PCB land pattern recommendations

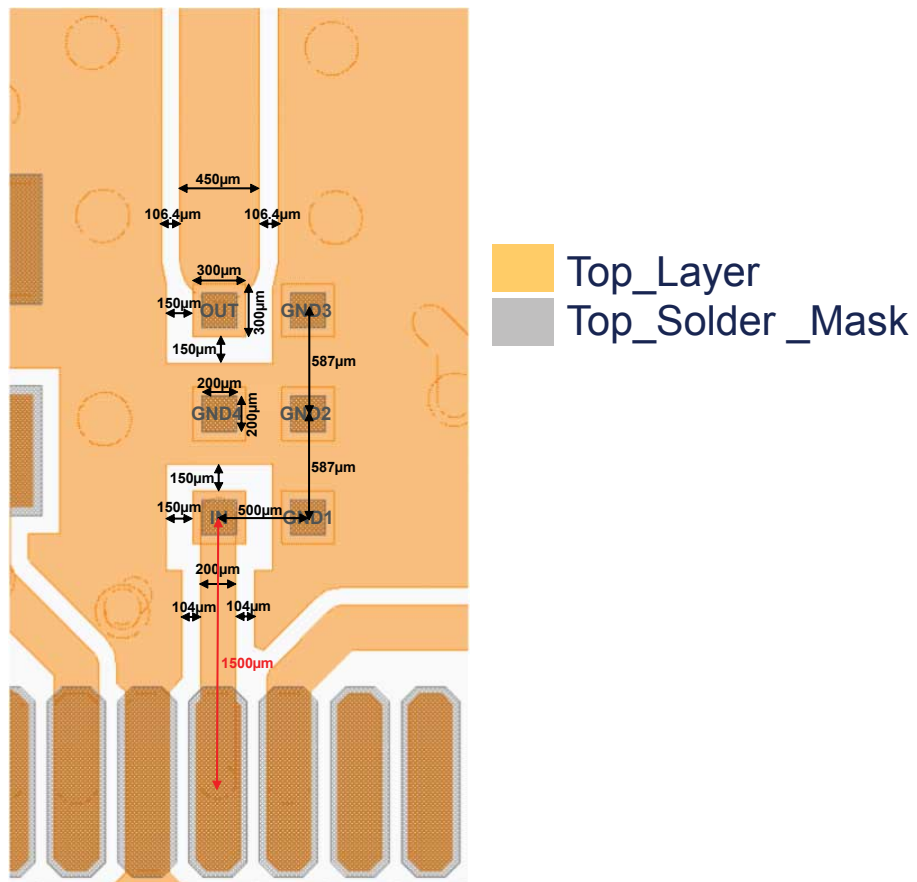
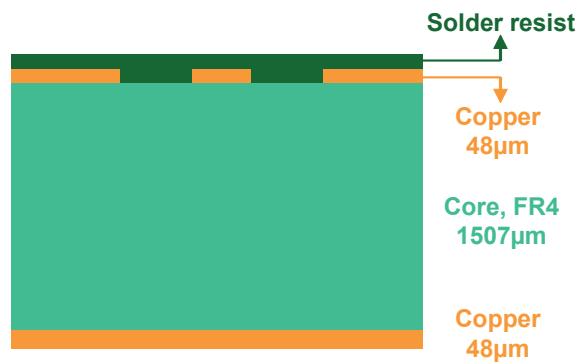


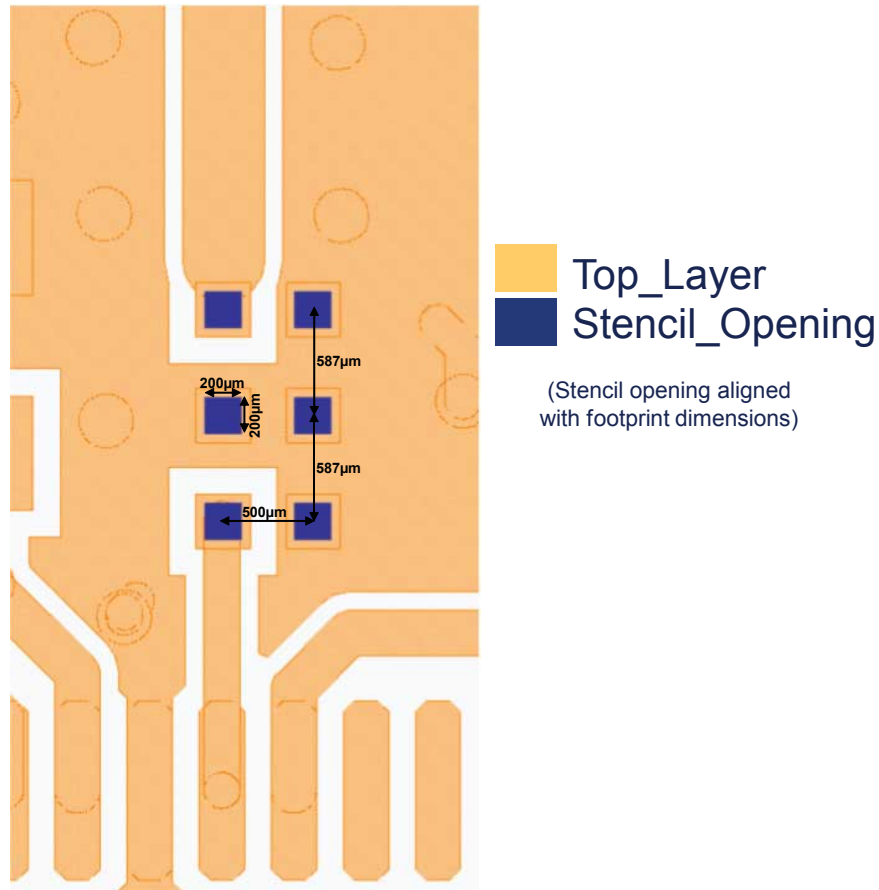
Figure 14. PCB stack-up recommendations





### 3.2 Stencil opening design

Figure 15. Stencil opening recommendations



### 3.3 Solder paste

1. 100 µm solder stencil thickness is recommended
2. Halide-free flux qualification ROL0 according to ANSI/J-STD-004.
3. “No clean” solder paste is recommended.
4. Offers a high tack force to resist component movement during PCB movement.
5. Solder paste with fine particles: powder particle size is 20-45 µm.

### 3.4 Placement

1. Manual positioning is not recommended.
2. It is recommended to use the lead recognition capabilities of the placement system, not the outline centering
3. Standard tolerance of  $\pm 0.05$  mm is recommended.
4. 1.0 N placement force is recommended. Too much placement force can lead to squeezed out solder paste and cause solder joints to short. Too low placement force can lead to insufficient contact between package and solder paste that could cause open solder joints or badly centered packages.
5. To improve the package placement accuracy, a bottom side optical control should be performed with a high resolution tool.
6. For assembly, a perfect supporting of the PCB (all the more on flexible PCB) is recommended during solder paste printing, pick and place and reflow soldering by using optimized tools.

### 3.5 PCB design preference

1. To control the solder paste amount, the closed via is recommended instead of open vias.

- 
2. The position of tracks and open vias in the solder area should be well balanced. A symmetrical layout is recommended, to avoid any tilt phenomena caused by asymmetrical solder paste due to solder flow away.

## 4 Ordering information

Figure 16. Ordering information scheme

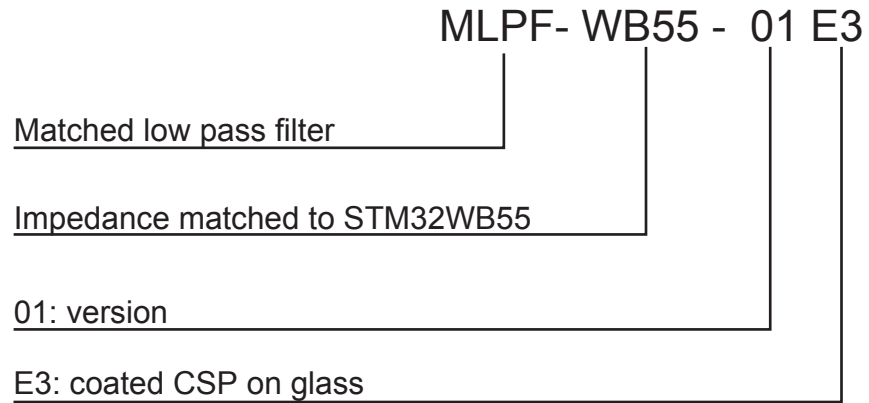


Table 7. Ordering information

Order code	Marking	Package	Weight	Base qty.	Delivery mode
MLPF-WB55-01E3	TS	Bumpless CSP	1.546 mg	5000	Tape and reel (7")

## Revision history

**Table 8. Document revision history**

Date	Version	Changes
12-Dec-2018	1	Initial release.

**IMPORTANT NOTICE – PLEASE READ CAREFULLY**

STMicroelectronics NV and its subsidiaries (“ST”) reserve the right to make changes, corrections, enhancements, modifications, and improvements to ST products and/or to this document at any time without notice. Purchasers should obtain the latest relevant information on ST products before placing orders. ST products are sold pursuant to ST’s terms and conditions of sale in place at the time of order acknowledgement.

Purchasers are solely responsible for the choice, selection, and use of ST products and ST assumes no liability for application assistance or the design of Purchasers’ products.

No license, express or implied, to any intellectual property right is granted by ST herein.

Resale of ST products with provisions different from the information set forth herein shall void any warranty granted by ST for such product.

ST and the ST logo are trademarks of ST. All other product or service names are the property of their respective owners.

Information in this document supersedes and replaces information previously supplied in any prior versions of this document.

© 2018 STMicroelectronics – All rights reserved

Компания «Life Electronics» занимается поставками электронных компонентов импортного и отечественного производства от производителей и со складов крупных дистрибьюторов Европы, Америки и Азии.

С конца 2013 года компания активно расширяет линейку поставок компонентов по направлению коаксиальный кабель, кварцевые генераторы и конденсаторы (керамические, пленочные, электролитические), за счёт заключения дистрибьюторских договоров

Мы предлагаем:

- Конкурентоспособные цены и скидки постоянным клиентам.
- Специальные условия для постоянных клиентов.
- Подбор аналогов.
- Поставку компонентов в любых объемах, удовлетворяющих вашим потребностям.
- Приемлемые сроки поставки, возможна ускоренная поставка.
- Доставку товара в любую точку России и стран СНГ.
- Комплексную поставку.
- Работу по проектам и поставку образцов.
- Формирование склада под заказчика.
- Сертификаты соответствия на поставляемую продукцию (по желанию клиента).
- Тестирование поставляемой продукции.
- Поставку компонентов, требующих военную и космическую приемку.
- Входной контроль качества.
- Наличие сертификата ISO.

В составе нашей компании организован Конструкторский отдел, призванный помогать разработчикам, и инженерам.

Конструкторский отдел помогает осуществить:

- Регистрацию проекта у производителя компонентов.
- Техническую поддержку проекта.
- Защиту от снятия компонента с производства.
- Оценку стоимости проекта по компонентам.
- Изготовление тестовой платы монтаж и пусконаладочные работы.



Тел: +7 (812) 336 43 04 (многоканальный)

Email: [org@lifeelectronics.ru](mailto:org@lifeelectronics.ru)