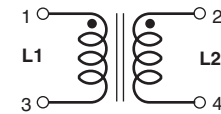
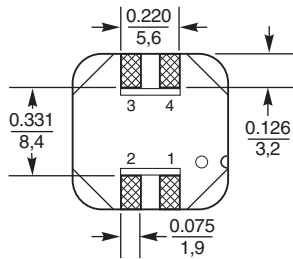
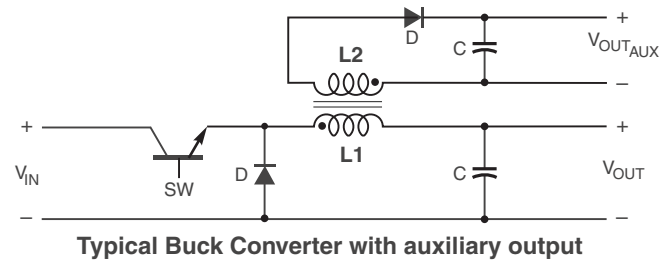


Coupled Inductors MSD1583 For Flyback, SEPIC, Zeta and other Applications



Dimensions are in $\frac{\text{inches}}{\text{mm}}$

Excellent coupling coefficient ($k \geq 0.98$) and 500 Vrms isolation makes the MSD1583 series of coupled inductors ideal for use in a variety of circuits including flyback, multi-output buck, SEPIC and Zeta. These parts provide high inductance, high efficiency and excellent current handling. In SEPIC topologies, the required inductance for each winding is half the value needed for two separate inductors, allowing selection of a part with lower DCR and higher current handling.



US +1-847-639-6400 sales@coilcraft.com
UK +44-1236-730595 sales@coilcraft-europe.com
Taiwan +886-2-2264 3646 sales@coilcraft.com.tw
China +86-21-6218 8074 sales@coilcraft.com.cn
Singapore + 65-6484 8412 sales@coilcraft.com.sg

Document 889-1 Revised 07/10/15
 © Coilcraft Inc. 2015
 This product may not be used in medical or high risk applications without prior Coilcraft approval. Specification subject to change without notice. Please check web site for latest information.



MSD1583 Coupled Inductors for SEPIC applications

Part number ¹	Inductance ² (μ H)	DCR (Ohms) ³		SRF typ ⁴ (MHz)	Coupling coefficient typ	Leakage inductance typ (μ H)	Isat (A) ⁵			Irms (A)	
		typ	max				10% drop	20% drop	30% drop	both windings ⁶	one winding ⁷
MSD1583-103ME_	10 \pm 20%	0.026	0.031	16.0	0.98	0.33	11.7	13.3	14.5	3.68	5.20
MSD1583-123ME_	12 \pm 20%	0.029	0.037	14.5	0.98	0.36	10.6	12.1	13.2	3.54	5.00
MSD1583-153ME_	15 \pm 20%	0.039	0.045	12.0	0.99	0.38	9.50	10.8	11.8	3.18	4.50
MSD1583-183ME_	18 \pm 20%	0.042	0.048	11.5	0.99	0.40	8.70	9.90	10.8	3.04	4.30
MSD1583-223ME_	22 \pm 20%	0.054	0.065	10.5	0.99	0.40	7.90	8.95	9.80	2.44	3.45
MSD1583-333ME_	33 \pm 20%	0.083	0.095	8.0	0.99	0.54	6.40	7.30	8.00	2.16	3.05
MSD1583-473ME_	47 \pm 20%	0.100	0.115	7.1	0.99	0.46	5.40	6.10	6.70	1.98	2.80
MSD1583-683ME_	68 \pm 20%	0.145	0.165	5.7	0.99	0.79	4.50	5.10	5.50	1.56	2.20
MSD1583-104KE_	100 \pm 10%	0.230	0.260	5.1	>0.99	0.59	3.70	4.20	4.60	1.24	1.75
MSD1583-154KE_	150 \pm 10%	0.340	0.380	3.7	>0.99	0.70	3.00	3.42	3.75	1.06	1.50
MSD1583-224KE_	220 \pm 10%	0.420	0.460	3.2	>0.99	0.89	2.50	2.83	3.10	0.92	1.30
MSD1583-474KE_	470 \pm 10%	0.950	1.04	2.2	>0.99	1.16	1.70	1.93	2.12	0.65	0.92
MSD1583-105KE_	1000 \pm 10%	2.20	2.40	1.6	>0.99	2.02	1.17	1.32	1.45	0.42	0.60

1. When ordering, please specify **termination** and **packaging** codes:

MSD1583-105KED

Termination: E = RoHS compliant matte tin over nickel over phos bronze. Special order: Q = RoHS tin-silver-copper (95.5/4/0.5) or P = non-RoHS tin-lead (63/37).

Packaging: D = 13" machine-ready reel. EIA-481 embossed plastic tape (300 parts per full reel).

B = Less than full reel. In tape, but not machine ready. To have a leader and trailer added (\$25 charge), use code letter D instead.

- Inductance shown for each winding, measured at 100 kHz, 0.1 Vrms, 0 Adc on an Agilent/HP 4284A LCR meter or equivalent. When leads are connected in parallel, inductance is the same value. When leads are connected in series, inductance is four times the value.
- DCR is for each winding. When leads are connected in parallel, DCR is half the value. When leads are connected in series, DCR is twice the value.
- SRF measured using an Agilent/HP 4191A or equivalent. When leads are connected in parallel, SRF is the same value.
- DC current at which the inductance drops the specified amount from its value without current. It is the sum of the current flowing in both windings.
- Equal current when applied to each winding simultaneously that causes a 40°C temperature rise from 25°C ambient.
- Maximum current when applied to one winding that causes a 40°C temperature rise from 25°C ambient. [Go to online calculator](#) for temperature rise calculation.
- Electrical specifications at 25°C.

Refer to Doc 639 "Selecting Coupled Inductors for SEPIC Applications." Refer to Doc 362 "Soldering Surface Mount Components" before soldering.

Coupled Inductor Core and Winding Loss Calculator

This web-based utility allows you to enter frequency, peak-to-peak (ripple) current, and Irms current to predict temperature rise and overall losses, including core loss. [Go to online calculator.](#)

Core material Ferrite

Core and winding loss [Go to online calculator](#)

Environmental RoHS compliant, halogen free

Terminations RoHS compliant matte tin over nickel over phos bronze. Other terminations available at additional cost.

Weight: 3.7 – 4.4 g

Ambient temperature -40°C to +85°C with (40°C rise) Irms current.

Maximum part temperature +125°C (ambient + temp rise).

Storage temperature Component: -40°C to +125°C.

Tape and reel packaging: -40°C to +80°C

Winding to winding isolation (hipot) 500 Vrms

Resistance to soldering heat Max three 40 second reflows at +260°C, parts cooled to room temperature between cycles

Moisture Sensitivity Level (MSL) 1 (unlimited floor life at <30°C / 85% relative humidity)

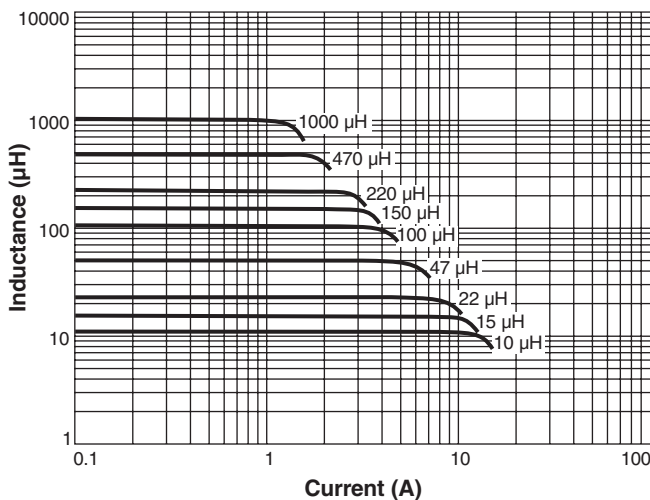
Failures in Time (FIT) / Mean Time Between Failures (MTBF)

38 per billion hours / 26,315,789 hours, calculated per Telcordia SR-332

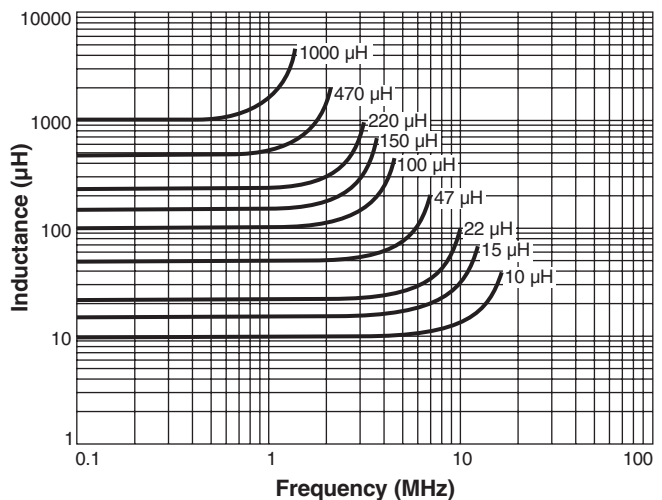
Packaging 300/13" reel; Plastic tape: 32 mm wide, 0.5 mm thick, 24 mm pocket spacing, 8.6 mm pocket depth

PCB washing Tested with pure water or alcohol only. For other solvents, see [Doc787_PCB_Washing.pdf](#).

Typical L vs Current



Typical L vs Frequency



US +1-847-639-6400 sales@coilcraft.com
UK +44-1236-730595 sales@coilcraft-europe.com
Taiwan +886-2-2264 3646 sales@coilcraft.com.tw
China +86-21-6218 8074 sales@coilcraft.com.cn
Singapore + 65-6484 8412 sales@coilcraft.com.sg

Document 889-2 Revised 07/10/15

© Coilcraft Inc. 2015

This product may not be used in medical or high risk applications without prior Coilcraft approval. Specification subject to change without notice. Please check web site for latest information.



MSD1583 Coupled Inductors for Flyback applications

Part number ¹	Inductance at 0 A ² (µH)	Inductance at I _{pk} A ³ typ (µH)	DCR max (Ohms)	Leakage inductance ⁴ typ (µH)	Turns ratio	I _{pk} ³ (A)
MSD1583-103ME_	10 ±20%	7.0	0.031	0.33	1 : 1	14.5
MSD1583-123ME_	12 ±20%	8.4	0.037	0.36	1 : 1	13.2
MSD1583-153ME_	15 ±20%	10.5	0.045	0.38	1 : 1	11.8
MSD1583-183ME_	18 ±20%	12.6	0.048	0.40	1 : 1	10.8
MSD1583-223ME_	22 ±20%	15.4	0.065	0.40	1 : 1	9.80
MSD1583-333ME_	33 ±20%	23.1	0.095	0.54	1 : 1	8.00
MSD1583-473ME_	47 ±20%	32.9	0.115	0.46	1 : 1	6.70
MSD1583-683ME_	68 ±20%	47.6	0.165	0.79	1 : 1	5.50
MSD1583-104KE_	100 ±10%	70.0	0.26	0.59	1 : 1	4.60
MSD1583-154KE_	150 ±10%	105	0.38	0.70	1 : 1	3.75
MSD1583-224KE_	220 ±10%	154	0.46	0.89	1 : 1	3.10
MSD1583-474KE_	470 ±10%	329	1.04	1.16	1 : 1	2.12
MSD1583-105KE_	1000 ±10%	700	2.4	2.02	1 : 1	1.45

1. When ordering, please specify **termination** and **packaging** code:

MSD1583-105KED

- Termination:** **E** = RoHS compliant matte tin over nickel over phos bronze.
Special order: **T** = RoHS tin-silver-copper (95.5/4/0.5) or **S** = non-RoHS tin-lead (63/37).
- Packaging:** **D** = 13" machine-ready reel. EIA-481 embossed plastic tape (300 parts per full reel).
B = Less than full reel. In tape, but not machine ready. To have a leader and trailer added (\$25 charge), use code letter D instead.

2. Inductance is for the primary (L1), measured at 100 kHz, 0.1 Vrms, 0 Adc on an Agilent/HP 4284A LCR meter or equivalent.
3. Peak primary current drawn at minimum input voltage.
4. Leakage inductance is for the primary winding (L1) with the secondary winding (L2) shorted.
5. Electrical specifications at 25°C.
Refer to Doc 362 "Soldering Surface Mount Components" before soldering.

Компания «Life Electronics» занимается поставками электронных компонентов импортного и отечественного производства от производителей и со складов крупных дистрибьюторов Европы, Америки и Азии.

С конца 2013 года компания активно расширяет линейку поставок компонентов по направлению коаксиальный кабель, кварцевые генераторы и конденсаторы (керамические, пленочные, электролитические), за счёт заключения дистрибьюторских договоров

Мы предлагаем:

- Конкурентоспособные цены и скидки постоянным клиентам.
- Специальные условия для постоянных клиентов.
- Подбор аналогов.
- Поставку компонентов в любых объемах, удовлетворяющих вашим потребностям.
- Приемлемые сроки поставки, возможна ускоренная поставка.
- Доставку товара в любую точку России и стран СНГ.
- Комплексную поставку.
- Работу по проектам и поставку образцов.
- Формирование склада под заказчика.
- Сертификаты соответствия на поставляемую продукцию (по желанию клиента).
- Тестирование поставляемой продукции.
- Поставку компонентов, требующих военную и космическую приемку.
- Входной контроль качества.
- Наличие сертификата ISO.

В составе нашей компании организован Конструкторский отдел, призванный помогать разработчикам, и инженерам.

Конструкторский отдел помогает осуществить:

- Регистрацию проекта у производителя компонентов.
- Техническую поддержку проекта.
- Защиту от снятия компонента с производства.
- Оценку стоимости проекта по компонентам.
- Изготовление тестовой платы монтаж и пусконаладочные работы.



Тел: +7 (812) 336 43 04 (многоканальный)

Email: org@lifeelectronics.ru