

| REVISIONS |     |             |            |          |
|-----------|-----|-------------|------------|----------|
| REV.      | ECN | DESCRIPTION | DATE       | APPROVED |
| A         |     | PROPOSAL    | JUN 02, 11 | JS       |
| B         |     | PROPOSAL    | MAR 1' 12  | JS       |
| C         |     | UPDATED     | FEB23/15   | JS       |

PART NUMBER  
(LAST DIGIT INDICATING  
PACKAGING TYPE, NOT  
PRINTED ON THE PART)

DATE CODE

FOLDED TABS

- NOTES:
- MATERIAL:  
CAGE: COPPER ALLOY  
  
PLATING OPTION X=2:  
2.54um MIN. NICKEL  
  
PLATING OPTION X=3:  
3.81um MIN. MATTE TIN  
OVER 1.27um MIN. NICKEL
  - TEMPERATURE RANGE:  
-40□ TO +85□
  - PACKAGING:  
TRAY PACKAGING



**AMPHENOL PART NUMBER CONFIGURATION**  
U77 - A 4 6 1 H - X 0 8 1

PACKAGING  
1 = TRAY PACKAGING

PLATING  
2 = NICKEL PLATING  
3 = MATTE TIN PLATING

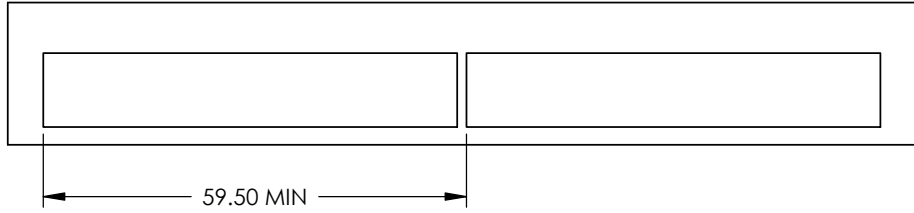
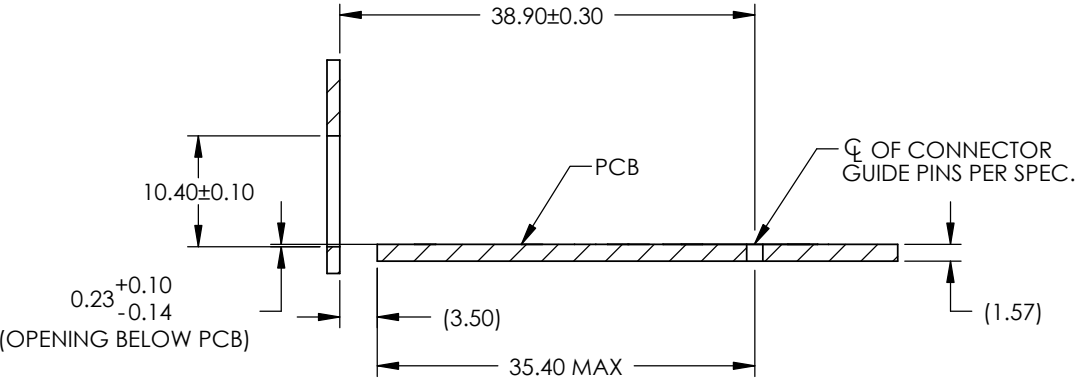
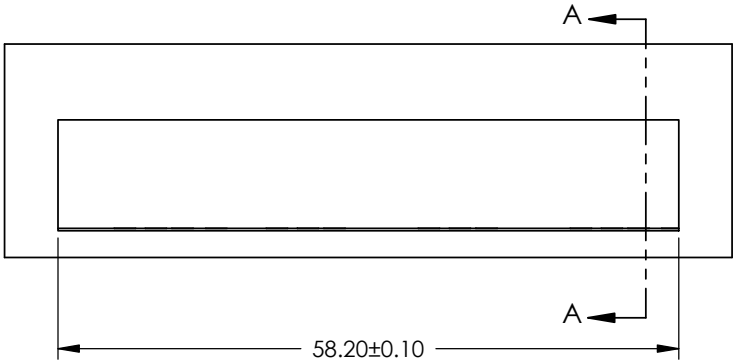
**DO NOT SCALE DRAWING**

THIS DOCUMENT CONTAINS PROPRIETARY INFORMATION AND SUCH INFORMATION MAY NOT BE DISCLOSED TO OTHERS FOR ANY PURPOSE OR USED FOR MANUFACTURING PURPOSES WITHOUT PERMISSION FROM AMPHENOL CANADA CORP.

|  |        |                  |         |             |  |
|--|--------|------------------|---------|-------------|--|
| UNLESS OTHERWISE SPECIFIED DIMENSIONS ARE IN MILLIMETERS TOLERANCES ARE: |        | <b>APPROVALS</b> |         | <b>DATE</b> |  |
| DECIMALS   | ANGLES | DRAWN            | Hisen.X | JUN02,11    |  |
| X.X ± 0.38   | ± 1°   | DESIGNED         | J.SI    | JUN02,11    |  |
| X.XX ± 0.25  |        | CHECKED          | X       | X           |  |
| MATERIAL AND FINISH  |        | QA APPD          | X       | X           |  |
| N/A  |        | IE APPD          | X       | X           |  |
| REF.   | X      | DWG APPD         |         |             |  |
| CODE IDENT. NO.  | 03554  |                  |         |             |  |

|   |                              |                 |
|---|------------------------------|-----------------|
| <b>Amphenol High Speed Interconnects</b><br>A Division of Amphenol Corp. www.amphenol-highspeed.com |                              |                 |
| TITLE<br>1X4 SFP+ CAGE, SPRING FINGER,<br>2.05mm LONG PRESS FIT PINS,<br>LOCK TABS ON BOTTOM COVER  |                              |                 |
| SIZE<br>A4  | DWG. NO.<br>P-U77-A461H-X081 | REV.<br>C       |
| SCALE<br>3:2  | PROJECT                      | SHEET<br>1 OF 5 |

| REVISIONS |     |             |            |          |  |
|-----------|-----|-------------|------------|----------|--|
| REV.      | ECN | DESCRIPTION | DATE       | APPROVED |  |
| A         |     | PROPOSAL    | JUN 02, 11 | JS       |  |
| B         |     | PROPOSAL    | MAR 1 '12  | JS       |  |
| C         |     | UPDATED     | FEB23/15   | JS       |  |



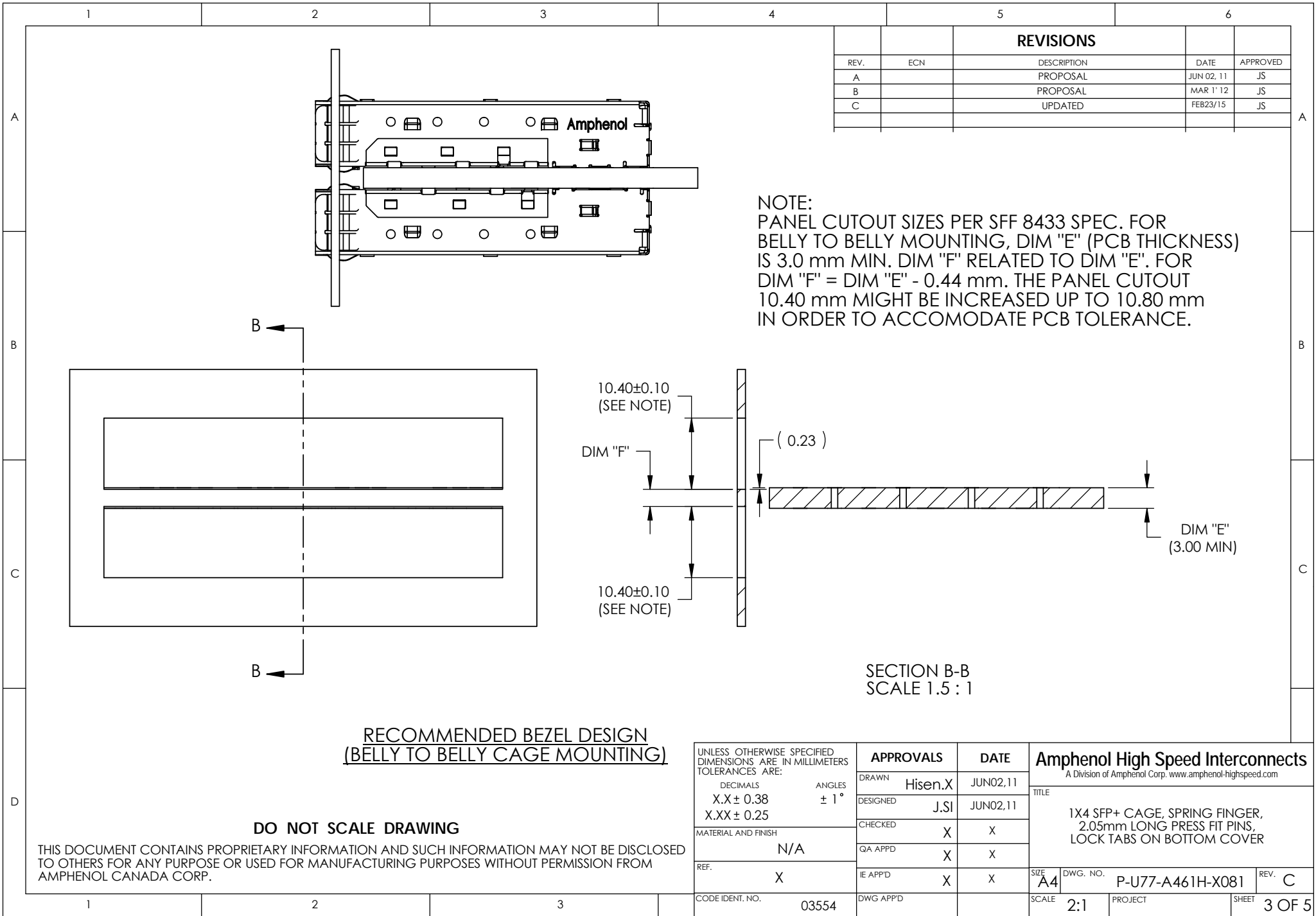
SECTION A-A  
SCALE 1.5 : 1

RECOMMENDED BEZEL DESIGN  
(SINGLE SIDE CAGE MOUNTING)

**DO NOT SCALE DRAWING**

THIS DOCUMENT CONTAINS PROPRIETARY INFORMATION AND SUCH INFORMATION MAY NOT BE DISCLOSED TO OTHERS FOR ANY PURPOSE OR USED FOR MANUFACTURING PURPOSES WITHOUT PERMISSION FROM AMPHENOL CANADA CORP.

|   |                  |           |             |   |
|---|------------------|-----------|-------------|---|
| UNLESS OTHERWISE SPECIFIED DIMENSIONS ARE IN MILLIMETERS TOLERANCES ARE:<br>DECIMALS                      ANGLES<br>X.X ± 0.38                      ± 1°<br>X.XX ± 0.25 | <b>APPROVALS</b> |           | <b>DATE</b> | <b>Amphenol High Speed Interconnects</b><br>A Division of Amphenol Corp. www.amphenol-highspeed.com |
|   | DRAWN            | Hisen.X   | JUN02,11    |   |
|   | DESIGNED         | J.SI      | JUN02,11    |   |
|   | CHECKED          | X         | X           |   |
|   | QA APP'D         | X         | X           |   |
| MATERIAL AND FINISH   | N/A              |           |             | TITLE   |
| REF.  | X                |           |             | 1X4 SFP+ CAGE, SPRING FINGER,<br>2.05mm LONG PRESS FIT PINS,<br>LOCK TABS ON BOTTOM COVER           |
| CODE IDENT. NO.   | 03554            | DWG APP'D |             | SIZE <b>A4</b><br>SCALE <b>1:1</b>  |
|   |                  |           |             | DWG. NO. <b>P-U77-A461H-X081</b>  |
|   |                  |           |             | PROJECT   |
|   |                  |           |             | SHEET <b>2 OF 5</b>   |
|   |                  |           |             | REV. <b>C</b>   |



| REVISIONS |     |             |            |          |
|-----------|-----|-------------|------------|----------|
| REV.      | ECN | DESCRIPTION | DATE       | APPROVED |
| A         |     | PROPOSAL    | JUN 02, 11 | JS       |
| B         |     | PROPOSAL    | MAR 1 '12  | JS       |
| C         |     | UPDATED     | FEB23/15   | JS       |

NOTE:  
 PANEL CUTOUT SIZES PER SFF 8433 SPEC. FOR BELLY TO BELLY MOUNTING, DIM "E" (PCB THICKNESS) IS 3.0 mm MIN. DIM "F" RELATED TO DIM "E". FOR DIM "F" = DIM "E" - 0.44 mm. THE PANEL CUTOUT 10.40 mm MIGHT BE INCREASED UP TO 10.80 mm IN ORDER TO ACCOMODATE PCB TOLERANCE.

**RECOMMENDED BEZEL DESIGN  
 (BELLY TO BELLY CAGE MOUNTING)**

SECTION B-B  
 SCALE 1.5 : 1

**DO NOT SCALE DRAWING**

THIS DOCUMENT CONTAINS PROPRIETARY INFORMATION AND SUCH INFORMATION MAY NOT BE DISCLOSED TO OTHERS FOR ANY PURPOSE OR USED FOR MANUFACTURING PURPOSES WITHOUT PERMISSION FROM AMPHENOL CANADA CORP.

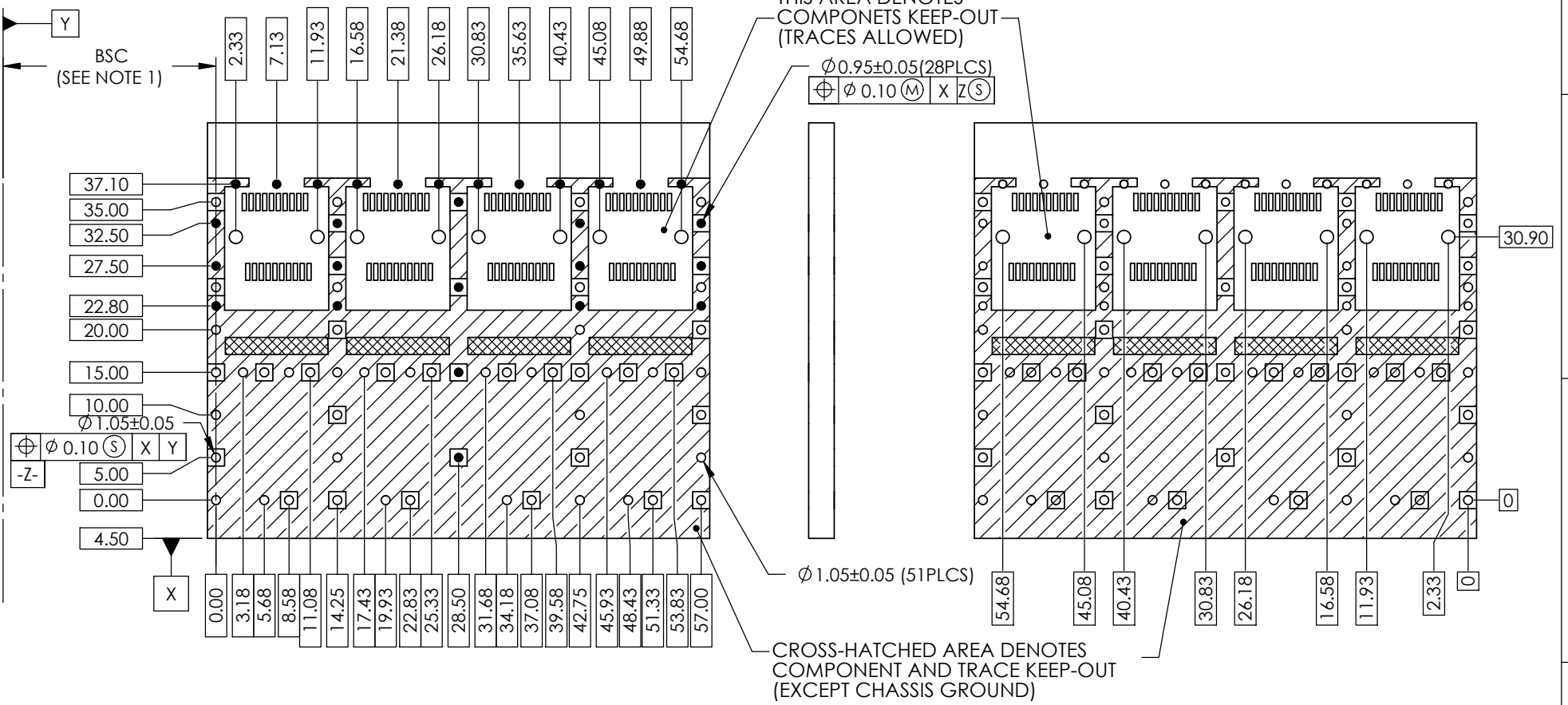
|  |        |                  |         |             |   |                              |
|--|--------|------------------|---------|-------------|---|------------------------------|
| UNLESS OTHERWISE SPECIFIED DIMENSIONS ARE IN MILLIMETERS TOLERANCES ARE: |        | <b>APPROVALS</b> |         | <b>DATE</b> | <b>Amphenol High Speed Interconnects</b><br>A Division of Amphenol Corp. www.amphenol-highspeed.com |                              |
| DECIMALS   | ANGLES | DRAWN            | Hisen.X | JUN02,11    | TITLE<br>1X4 SFP+ CAGE, SPRING FINGER, 2.05mm LONG PRESS FIT PINS, LOCK TABS ON BOTTOM COVER        |                              |
| X.X ± 0.38   | ± 1°   | DESIGNED         | J.SI    | JUN02,11    |   |                              |
| X.XX ± 0.25  |        | CHECKED          | X       | X           |   |                              |
| MATERIAL AND FINISH  |        | QA APP'D         | X       | X           |   |                              |
| REF.   | X      | IE APP'D         | X       | X           | SIZE<br><b>A4</b>   | DWG. NO.<br>P-U77-A461H-X081 |
| CODE IDENT. NO.  | 03554  | DWG APP'D        |         |             | SCALE<br><b>2:1</b>   | PROJECT                      |
|  |        |                  |         |             | SHEET   | <b>3 OF 5</b>                |



- NOTES:  
 1. DATUM AND BASIC DIMENSIONS ESTABLISHED BY CUSTOMER.  
 2. PADS AND VIAS ARE CHASSIS GROUND.  
 3. THRU-HOLES, PLATING OPTIONAL.

| REVISIONS |     |             |            |          |
|-----------|-----|-------------|------------|----------|
| REV.      | ECN | DESCRIPTION | DATE       | APPROVED |
| A         |     | PROPOSAL    | JUN 02, 11 | JS       |
| B         |     | PROPOSAL    | MAR 1 '12  | JS       |
| C         |     | UPDATED     | FEB23/15   | JS       |

Y  
 BSC  
 (SEE NOTE 1)



**RECOMMENDED PCB DESIGN  
 FOR BELLY TO BELLY MOUNTING**

**DO NOT SCALE DRAWING**

THIS DOCUMENT CONTAINS PROPRIETARY INFORMATION AND SUCH INFORMATION MAY NOT BE DISCLOSED TO OTHERS FOR ANY PURPOSE OR USED FOR MANUFACTURING PURPOSES WITHOUT PERMISSION FROM AMPHENOL CANADA CORP.

|   |                  |          |             |
|---|------------------|----------|-------------|
| UNLESS OTHERWISE SPECIFIED DIMENSIONS ARE IN MILLIMETERS TOLERANCES ARE:<br>DECIMALS X.X ± 0.38<br>X.XX ± 0.25<br>ANGLES ± 1° | <b>APPROVALS</b> |          | <b>DATE</b> |
|   | DRAWN Hisen.X    | JUN02,11 |             |
| MATERIAL AND FINISH N/A   | DESIGNED J.SI    | JUN02,11 |             |
|   | CHECKED X        | X        |             |
| REF. X  | QA APPD X        | X        |             |
|   | IE APPD X        | X        |             |
| CODE IDENT. NO. 03554   | DWG APPD         |          |             |

|   |                           |              |  |
|---|---------------------------|--------------|--|
| <b>Amphenol High Speed Interconnects</b><br>A Division of Amphenol Corp. www.amphenol-highspeed.com |                           |              |  |
| TITLE<br>1X4 SFP+ CAGE, SPRING FINGER,<br>2.05mm LONG PRESS FIT PINS,<br>LOCK TABS ON BOTTOM COVER  |                           |              |  |
| SIZE A4   | DWG. NO. P-U77-A461H-X081 | REV. C       |  |
| SCALE 1:1   | PROJECT                   | SHEET 5 OF 5 |  |

Компания «Life Electronics» занимается поставками электронных компонентов импортного и отечественного производства от производителей и со складов крупных дистрибьюторов Европы, Америки и Азии.

С конца 2013 года компания активно расширяет линейку поставок компонентов по направлению коаксиальный кабель, кварцевые генераторы и конденсаторы (керамические, пленочные, электролитические), за счёт заключения дистрибьюторских договоров

Мы предлагаем:

- Конкурентоспособные цены и скидки постоянным клиентам.
- Специальные условия для постоянных клиентов.
- Подбор аналогов.
- Поставку компонентов в любых объемах, удовлетворяющих вашим потребностям.
- Приемлемые сроки поставки, возможна ускоренная поставка.
- Доставку товара в любую точку России и стран СНГ.
- Комплексную поставку.
- Работу по проектам и поставку образцов.
- Формирование склада под заказчика.
- Сертификаты соответствия на поставляемую продукцию (по желанию клиента).
- Тестирование поставляемой продукции.
- Поставку компонентов, требующих военную и космическую приемку.
- Входной контроль качества.
- Наличие сертификата ISO.

В составе нашей компании организован Конструкторский отдел, призванный помогать разработчикам, и инженерам.

Конструкторский отдел помогает осуществить:

- Регистрацию проекта у производителя компонентов.
- Техническую поддержку проекта.
- Защиту от снятия компонента с производства.
- Оценку стоимости проекта по компонентам.
- Изготовление тестовой платы монтаж и пусконаладочные работы.



Тел: +7 (812) 336 43 04 (многоканальный)  
Email: [org@lifeelectronics.ru](mailto:org@lifeelectronics.ru)