

LT3477 and LT3003
 High Current Multi-String LED Driver with
 Wide PWM Dimming Range

WARNING!
 DO NOT LOOK AT OPERATING LED.
 This circuit produces light that can damage eyes.

DESCRIPTION

Demonstration circuit 1130 is a High Current Multi-String LED Driver with Wide PWM Dimming Range featuring the LT3477 and LT3003. The demo circuit boosts V_{IN} , between 8V and 16V, to the required V_{OUT} for a load of three LED strings. The current in each string is 110mA. The LT3003 LED ballaster offers high efficiency and good current matching. The circuit can drive 6 to 8 white LEDs per string. For 8 LEDs, it is recommended to change R5 to 1.15M. For other colors, the number of LEDs the circuit can drive depends on the forward voltage of LEDs used. The demo circuit operates at 2MHz, offering small solution size while avoiding the frequency band of the AM radio. Pulling the SHDN terminal to ground (GND) will disable the demo board. OT1 or OT2 can be left floating.

Fast LED current turn-on and -off is made possible by adding Q1 and D2. This allows wide PWM

dimming ratio. PWM dimming offers better LED color integrity than the DC dimming. At 100Hz PWM frequency, 300:1 dimming ratio can be easily achieved with this demo circuit.

Other current levels and/or load configurations can be achieved with simple modifications. Please consult the datasheets or the factory for customization details.

The LT3477 and the LT3003 datasheets give complete description of the part, operation and application information. The datasheets must be read in conjunction with this quick start guide for working on or modifying the demo circuit 1130.

Design files for this circuit board are available. Call the LTC factory.

LT, LTC and LT are registered trademarks of Linear Technology Corporation. ThinSOT and PowerPath are trademarks of Linear Technology Corporation.

PERFORMANCE SUMMARY

Specifications are at $T_A = 25^\circ\text{C}$

SYMBOL	PARAMETER	CONDITIONS	MIN	TYP	MAX	UNITS
V_{IN}	Input Supply Range		8		16	V
V_{PWM}	PWM Voltage		3		6	V
F_s	Switching Frequency			2		MHz
N	Number of LED Strings			3		N/A
I_{OUT}	Total Output Current			330		mA
V_{OPEN}	Open Circuit Output Voltage	No Load		29		V
η	Efficiency	$V_{IN} = 12\text{V}$ 3 LED strings, 8 LEDs per string, 110mA/string		78		%

QUICK START PROCEDURE

Demonstration circuit 1130 is easy to set up to evaluate the performance of the LT3477 and LT3003. Refer to Figure 1 for proper measurement equipment setup and follow the procedure below:

NOTE. When measuring the input or output voltage ripple, care must be taken to avoid a long ground lead on the oscilloscope probe. Measure the input or output voltage ripple by touching the probe tip directly across the V_{IN} or V_{OUT} and GND terminals. See Figure 2 for proper scope probe technique.

1. With power off, connect an input power supply to V_{IN} and GND.
2. Connect the PWM turret to a different supply.
3. Connect three (3) LED strings between V_{OUT} and LED1- to LED3- respectively.
4. Turn on V_{IN} and PWM supplies.
NOTE. Make sure that the input voltage does not exceed 16V.
5. Check for the proper voltages and currents.
NOTE. If the LEDs do not light up, check all the connections.
6. Once the proper operations are established, adjust the input within the operating range and observe the parameters interested.
7. To test PWM dimming, apply a PWM signal to the PWM turret and observe the relationship between the LED average current and the dimming ratio.

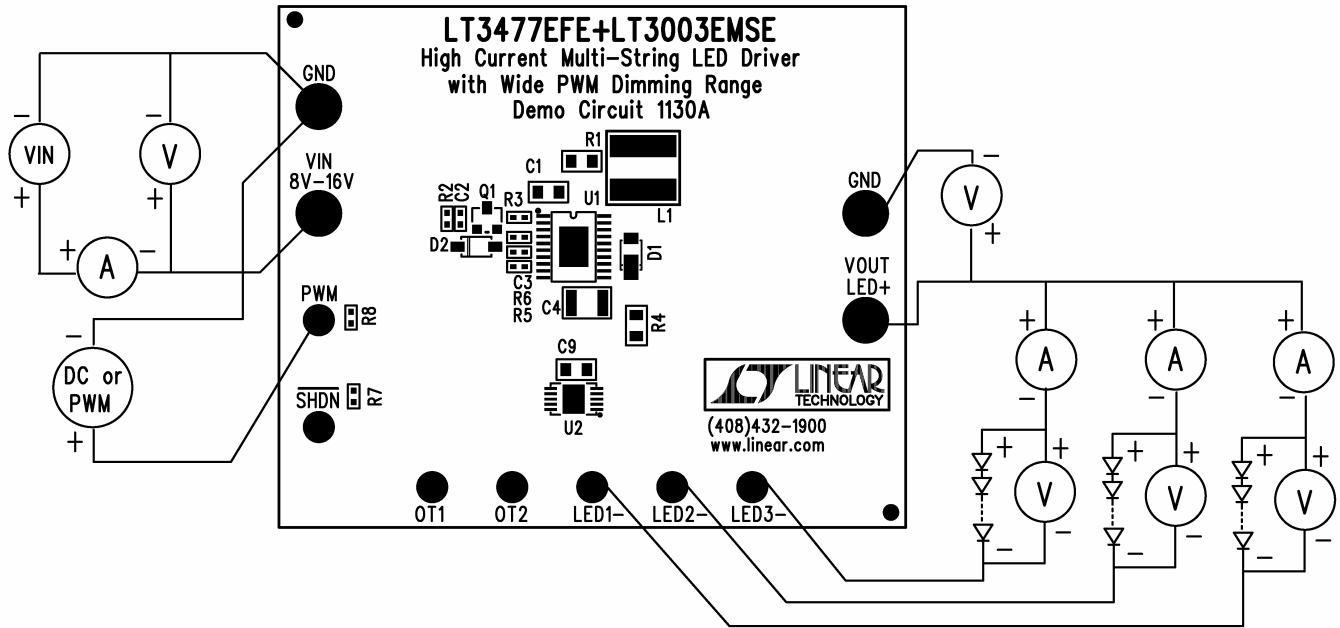


Figure 1. Proper Measurement Equipment Setup

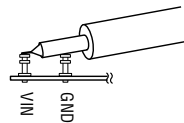
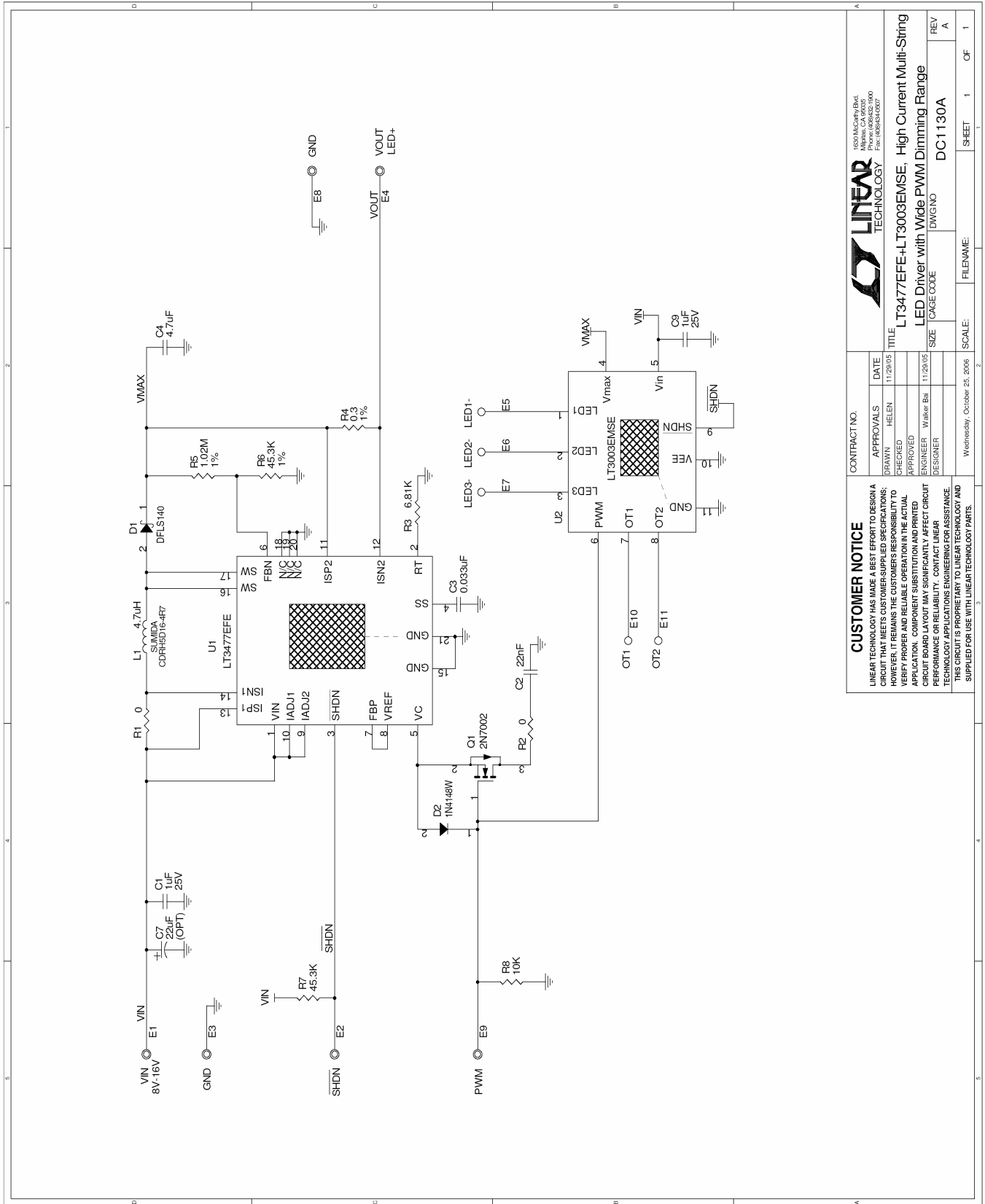


Figure 2. Measuring Input or Output Ripple

LT3477 AND LT3003



CUSTOMER NOTICE		CONTRACT NO.	
LINEAR TECHNOLOGY HAS MADE A BEST EFFORT TO DESIGN A CIRCUIT THAT MEETS CUSTOMER-SUPPLIED SPECIFICATIONS. CUSTOMER AGREES TO HOLD LINEAR TECHNOLOGY HARMLESS FROM AND TO VERIFY PROPER AND RELIABLE OPERATION IN THE ACTUAL APPLICATION. COMPONENT SUBSTITUTION AND PRINTED CIRCUIT BOARD LAYOUT MAY SIGNIFICANTLY AFFECT CIRCUIT PERFORMANCE OR RELIABILITY. CONTACT LINEAR TECHNOLOGY APPLICATIONS ENGINEERING FOR ASSISTANCE. THIS CIRCUIT IS PROPRIETARY TO LINEAR TECHNOLOGY AND SUPPLIED FOR USE WITH LINEAR TECHNOLOGY PARTS.		11/29/05	
APPROVALS		DATE	
DRAWN	HELEN	CHECKED	11/29/05
APPROVED		APPROVED	11/29/05
ENGINEER	Walker Bai	DESIGNER	
TITLE		FILENAME	
LT3477EFE-LT3003EMSE: High Current Multi-String LED Driver with Wide PWM Dimming Range		DC1130A	
SIZE		DWG NO	
CAGE CODE		REV	
		A	
SCALE		SHEET	
Wednesday, October 25, 2006		1 OF 1	


LINEAR TECHNOLOGY
 1650 McCarthy Blvd
 Milpitas, CA 95035
 Fax: (408) 541-0077

Item	Qty	Reference	Part Description	Manufacturer / Part #
REQUIRED CIRCUIT COMPONENTS:				
1	2	C1,C9	CAP., X5R, 1uF,25V,10%, 0805	AVX, 08053D105KAT2A
2	1	C2	CAP., X7R, 22nF, 25V, 10%, 0402	TDK, C1005X7R1E223K
3	1	C3	CAP., X7R, 0.033uF, 16V,10%, 0402	TDK, C1005X7R1C333K
4	1	C4	CAP., X7R, 4.7uF, 50V,10%, 1210	Murata, GRM32ER71H475KA88L
5	1	D1	DIODE, SCHOTTKY RECT, POWERDI1	DIODES INC, DFLS140-7
6	1	D2	DIODE, SWITCHING DIODE,SOD-123	DIODES INC, 1N4148W-7-F
7	1	L1	INDUCTOR., 4.7uH	SUMIDA, CDRH5D16NP-4R7NC
8	1	Q1	N-CHANNEL MOSFET, SOT-23	DIODES INC, 2N7002-7
9	1	R3	RES., CHIP, 6.81K, 1/16W,1%, 0402	AAC, CR05-6811FM
10	1	R4	RES., CHIP, 0.3, 1/16W, 1%, 0805	THIN FILM INC, RL1220SR30-F
11	1	R5	RES., CHIP, 1.02M, 1/16W 1%,0402	VISHAY, CRCW04021M02FKED
12	1	R6	RES., CHIP, 45.3K, 1/16W, 1%, 0402	AAC, CR05-4532FM
13	1	U1	I.C, LT3477EFE, TSSOP(4.4mm)	LINEAR TECH., LT3477EFE
14	1	U2	I.C LT3003EMSE#PBF,10-lead, MSOP	LINEAR TECH., LT3003EMSE#PBF
ADDITIONAL DEMO BOARD CIRCUIT COMPONENTS:				
1	1	C7	CAP., TANT, 22uF, 25V, 20%,	AVX, TAJC226M025R
2	1	R1	RES., CHIP, 0, 1/16W, 0805	AAC, CJ10-000M
3	1	R2	RES., CHIP, 0, 1/16W, 0402	AAC, CJ05-000M
4	1	R7	RES., CHIP, 45.3K, 1/16W, 1%, 0402	AAC, CR05-4532FM
5	1	R8	RES., CHIP, 10K, 1/16W, 1%, 0402	VISHAY, CRCW0402103D
HARDWARE-FOR DEMO BOARD ONLY:				
1	4	E1,E3,E4,E8	TESTPOINT, TURRET, .095"	MILL-MAX, 2501-2-00-80-00-00-07-0
2	7	E2,E5-E7,E9-E11	TESTPOINT, TURRET, .065"	MILL-MAX, 2308-2-00-80-00-00-07-0

Компания «Life Electronics» занимается поставками электронных компонентов импортного и отечественного производства от производителей и со складов крупных дистрибьюторов Европы, Америки и Азии.

С конца 2013 года компания активно расширяет линейку поставок компонентов по направлению коаксиальный кабель, кварцевые генераторы и конденсаторы (керамические, пленочные, электролитические), за счёт заключения дистрибьюторских договоров

Мы предлагаем:

- Конкурентоспособные цены и скидки постоянным клиентам.
- Специальные условия для постоянных клиентов.
- Подбор аналогов.
- Поставку компонентов в любых объемах, удовлетворяющих вашим потребностям.
- Приемлемые сроки поставки, возможна ускоренная поставка.
- Доставку товара в любую точку России и стран СНГ.
- Комплексную поставку.
- Работу по проектам и поставку образцов.
- Формирование склада под заказчика.
- Сертификаты соответствия на поставляемую продукцию (по желанию клиента).
- Тестирование поставляемой продукции.
- Поставку компонентов, требующих военную и космическую приемку.
- Входной контроль качества.
- Наличие сертификата ISO.

В составе нашей компании организован Конструкторский отдел, призванный помогать разработчикам, и инженерам.

Конструкторский отдел помогает осуществить:

- Регистрацию проекта у производителя компонентов.
- Техническую поддержку проекта.
- Защиту от снятия компонента с производства.
- Оценку стоимости проекта по компонентам.
- Изготовление тестовой платы монтаж и пусконаладочные работы.



Тел: +7 (812) 336 43 04 (многоканальный)

Email: org@lifeelectronics.ru