

I/O module - IB ST 24 DIO 8/8/3-2A - 2753708

Please be informed that the data shown in this PDF Document is generated from our Online Catalog. Please find the complete data in the user's documentation. Our General Terms of Use for Downloads are valid (<http://phoenixcontact.com/download>)



INTERBUS-ST digital input/output module, eight inputs, 24 V DC, eight outputs, 24 V DC, 2 A, IP20 degree of protection, consisting of: Terminal part with screw connection and module electronics

Product Description

INTERBUS ST digital input and output modules

The digital INTERBUS input/output modules provide the option of connecting 8 sensors and 8 actuators with two or three-wire connections.

The electronics module is a plug-in type. In the event of a malfunction, the passive basic termination block remains on the DIN rail and the active electronics module can be replaced within a few seconds.

The modules are protected against polarity reversal and the outputs are additionally protected against short-circuiting with fuses. The status of the fuses is monitored and any errors which occur are passed on to the control system.

The contact with the protective earth ground is made directly when the module is snapped onto the DIN rail.

Input/output status LEDs and bus diagnostic displays on the top side of the module electronics give information on the condition of the module at any time.

All the modules can be labeled individually on the large, pull-out labeling field. The insert cards can be labeled by hand, plotter, or printer. The terminal points can also be labeled individually with Zack strip.

Product Features

- 8 digital outputs
- 8 digital inputs
- Connection of actuators in 3-wire technology
- Connection of sensors in 3-wire technology
- Electrical isolation
- Diagnostic and status indicators
- DIN rail mounting



Key Commercial Data

Packing unit	1 pc
GTIN	 4 017918 062880
Weight per Piece (excluding packing)	710.0 g
Custom tariff number	85389091
Country of origin	Germany

I/O module - IB ST 24 DIO 8/8/3-2A - 2753708

Technical data

Note

Utilization restriction	EMC: class A product, see manufacturer's declaration in the download area
-------------------------	---

Dimensions

Width	118 mm
Height	117 mm
Depth	116 mm

Ambient conditions

Ambient temperature (operation)	0 °C ... 55 °C
Ambient temperature (storage/transport)	-25 °C ... 70 °C
Permissible humidity (operation)	30 % ... 75 % (non-condensing)
Permissible humidity (storage/transport)	30 % ... 95 % (non-condensing)
Air pressure (operation)	86 kPa ... 108 kPa (1500 m above sea level)
Air pressure (storage/transport)	66 kPa ... 108 kPa (3500 m above sea level)
Degree of protection	IP20

Interfaces

Fieldbus system	Lokalbus
Designation	ST local bus
Connection method	ST local bus connector
Transmission speed	500 kBit/s

Digital inputs

Input name	Digital inputs
Connection method	Screw connection
	3-conductor
Number of inputs	8
Typical response time	3 ms (typ.)
Protective circuit	Overload protection Fuse in header
Input voltage	24 V DC
Input voltage range "0" signal	-30 V DC ... 5 V DC
Input voltage range "1" signal	13 V DC ... 30 V DC
Nominal input current at U _{IN}	typ. 5 mA (per channel)

Digital outputs

Output name	Digital outputs
Connection method	Screw connection
	3-conductor
Number of outputs	8

I/O module - IB ST 24 DIO 8/8/3-2A - 2753708

Technical data

Digital outputs

Protective circuit	Short-circuit protection Fuse
Maximum output current per channel	2 A
Maximum output current per module / terminal block	16 A
Maximum output current per group	8 A

Power supply for module electronics

Supply voltage	24 V DC
Supply voltage range	20 V DC ... 30 V DC (including ripple)
Ripple	3.6 V _{pp} within the allowable voltage range
Current consumption	0.2 A
Communications power U _L	9 V DC
Current consumption	max. 100 mA

General

Mounting type	DIN rail
Net weight	710 g

Standards and Regulations

Test section	Bus logic / I/O 500 V AC 50 Hz 1 min.
	I/O / Ground conductor 500 V AC 50 Hz 1 min.
Connection in acc. with standard	CUL
Protection class	III, IEC 61140, EN 61140, VDE 0140-1

Classifications

eCl@ss

eCl@ss 4.0	27250302
eCl@ss 4.1	27250302
eCl@ss 5.0	27250302
eCl@ss 5.1	27242604
eCl@ss 6.0	27242604
eCl@ss 7.0	27242604
eCl@ss 8.0	27242604
eCl@ss 9.0	27242604

ETIM

ETIM 2.0	EC001430
ETIM 3.0	EC001599
ETIM 4.0	EC001599

I/O module - IB ST 24 DIO 8/8/3-2A - 2753708

Classifications

ETIM

ETIM 5.0	EC001599
----------	----------

UNSPSC

UNSPSC 6.01	43172015
UNSPSC 7.0901	43201404
UNSPSC 11	43172015
UNSPSC 12.01	43201404
UNSPSC 13.2	43201404

Approvals

Approvals

Approvals

UL Recognized / cUL Recognized / EAC / cULus Recognized

Ex Approvals

Approvals submitted

Approval details

UL Recognized	
mm ² /AWG/kcmil	30-12

cUL Recognized	
mm ² /AWG/kcmil	30-12

EAC

I/O module - IB ST 24 DIO 8/8/3-2A - 2753708

Approvals



Accessories

Accessories

Bridge

Jumper - IB ST LBC - 2836492



Spare local bus cable, for INTERBUS-ST modules

Insertion bridge - EB 84 IB ST BU - 2836269



Insertion bridges, divisible, isolated comb spine, color blue, 84-pos.

Insertion bridge - EB 84 IB ST RD - 2836272



Insertion bridges, divisible, isolated comb spine, color red, 84-pos.

Device parameterization

Software - AX+ BASIC - 2985068



Software CD for FDT container for integrating device DTMs (free download)

I/O module - IB ST 24 DIO 8/8/3-2A - 2753708

Accessories

Software - AX DTM LIB - 2988065



DTM library

Fuse

Fuse - IBS TR5 4AF - 2753465



Replacement fuse, for INTERBUS-ST modules

Replacement electronics module - IB STME 24 DIO 8/8/3-2A - 2752945



Replacement module electronics for IB ST (ZF) 24 DIO 8/8/3-2A

Spare parts

Jumper - IB ST LBC - 2836492



Spare local bus cable, for INTERBUS-ST modules

Fuse - IBS TR5 4AF - 2753465



Replacement fuse, for INTERBUS-ST modules

I/O module - IB ST 24 DIO 8/8/3-2A - 2753708

Accessories

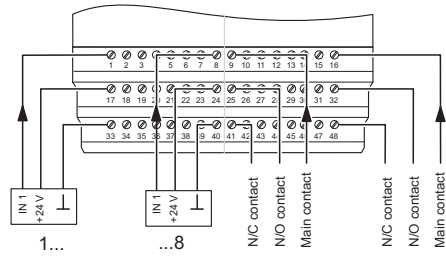
Replacement electronics module - IB STME 24 DIO 8/8/3-2A - 2752945



Replacement module electronics for IB ST (ZF) 24 DIO 8/8/3-2A

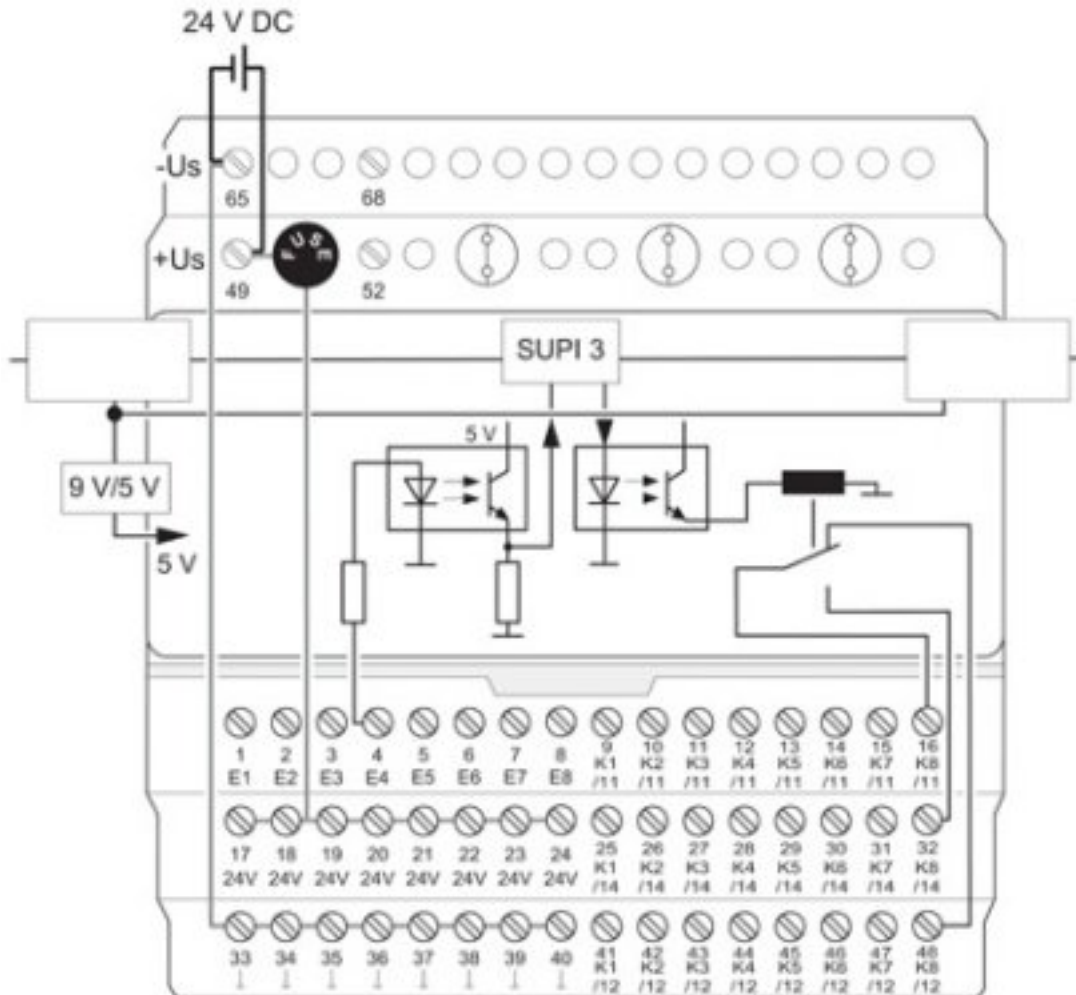
Drawings

Connection diagram



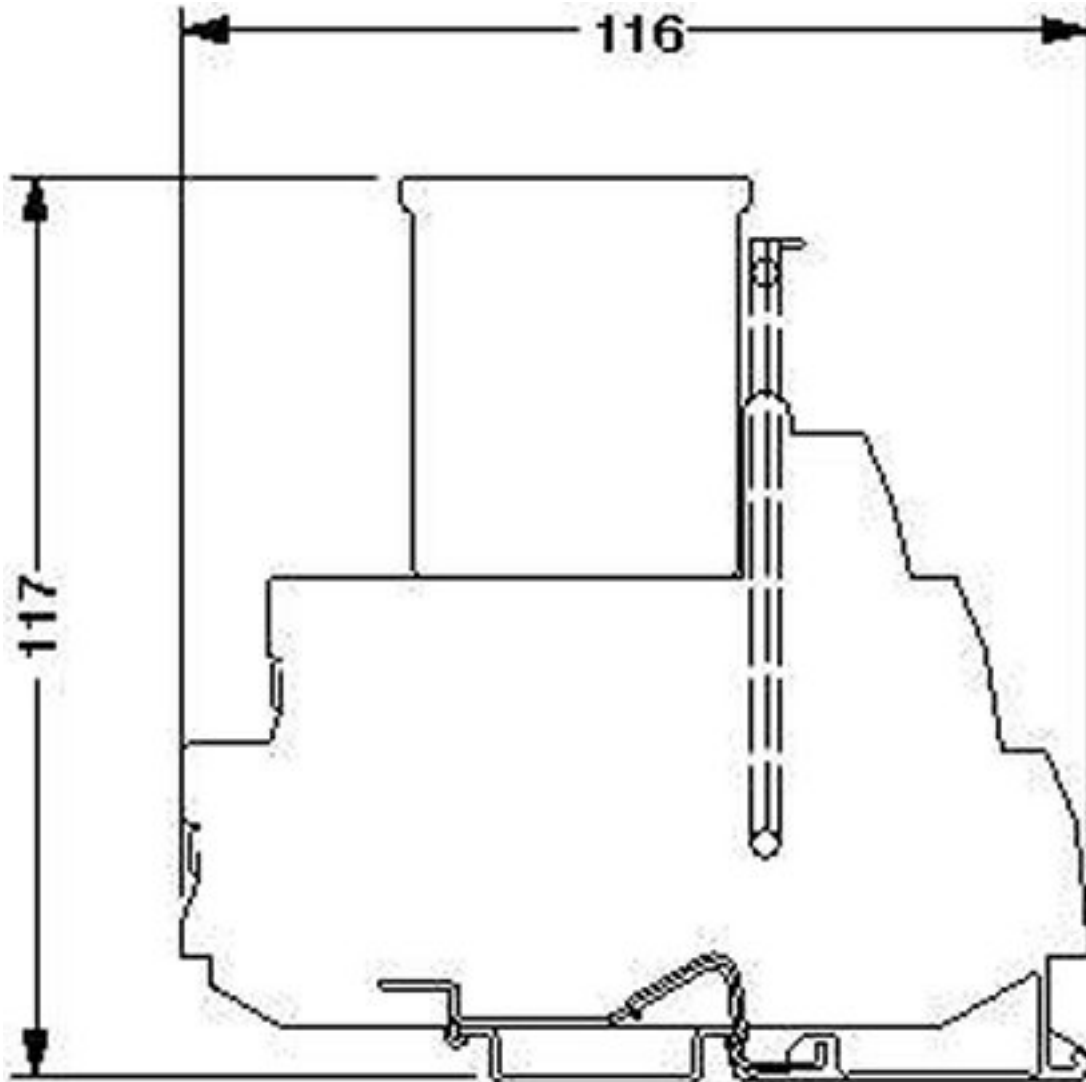
I/O module - IB ST 24 DIO 8/8/3-2A - 2753708

Block diagram



I/O module - IB ST 24 DIO 8/8/3-2A - 2753708

Dimensional drawing



Компания «Life Electronics» занимается поставками электронных компонентов импортного и отечественного производства от производителей и со складов крупных дистрибьюторов Европы, Америки и Азии.

С конца 2013 года компания активно расширяет линейку поставок компонентов по направлению коаксиальный кабель, кварцевые генераторы и конденсаторы (керамические, пленочные, электролитические), за счёт заключения дистрибьюторских договоров

Мы предлагаем:

- Конкурентоспособные цены и скидки постоянным клиентам.
- Специальные условия для постоянных клиентов.
- Подбор аналогов.
- Поставку компонентов в любых объемах, удовлетворяющих вашим потребностям.
- Приемлемые сроки поставки, возможна ускоренная поставка.
- Доставку товара в любую точку России и стран СНГ.
- Комплексную поставку.
- Работу по проектам и поставку образцов.
- Формирование склада под заказчика.
- Сертификаты соответствия на поставляемую продукцию (по желанию клиента).
- Тестирование поставляемой продукции.
- Поставку компонентов, требующих военную и космическую приемку.
- Входной контроль качества.
- Наличие сертификата ISO.

В составе нашей компании организован Конструкторский отдел, призванный помогать разработчикам, и инженерам.

Конструкторский отдел помогает осуществить:

- Регистрацию проекта у производителя компонентов.
- Техническую поддержку проекта.
- Защиту от снятия компонента с производства.
- Оценку стоимости проекта по компонентам.
- Изготовление тестовой платы монтаж и пусконаладочные работы.



Тел: +7 (812) 336 43 04 (многоканальный)

Email: org@lifeelectronics.ru