



# **PLK & PLR SERIES** **Professional keylock or rotary switches**

## **NEW RANGE**

- Miniature & subminiature
- 2 to 12 positions
- 1 to 4 poles



**A P E M**

# PLK - PLR SERIES

## PROFESSIONAL KEYLOCK OR ROTARY SWITCHES

### Distinctive features

#### PLK SERIES - KEYLOCK SWITCHES

- Tapered lock face
- 2 or 3 positions
- Single or double pole
- Indexing : 90° (single pole) or 60° (double pole)
- Up to 200 different keys
- Double entry keys (can be inserted into the lock either way up)
- 5 disc lock type
- Miniature size, occupy small panel area
- Rear projection less than 30 mm from panel
- Easily assembled through front of panel
- Option : sealed terminals
- *Models with straight lock face available on request*



#### PLR SERIES - MINIATURE ROTARY SWITCHES

- 2 to 12 positions
- 1 to 4 poles
- Indexing : 30° on standard models, 60° or 90° optional
- Models with continuous rotation
- Adjustable stop to restrict number of position
- Shorting (make before break) or non shorting (break before make) contacts
- Solder lugs or PCB pins
- Options available :
  - no bush version
  - rear drive version
  - sealed terminations



#### PLRT SERIES - SUBMINIATURE ROTARY SWITCHES

- Standard TO-5 housing
- 2 to 8 positions
- Single or double pole
- 45° indexing
- Continuous rotation available on 8-position models
- Actuator : spindle
- Option : protective cover
- *Models with screwdriver slot available on request*



**Dimensions** : First dimensions are in mm while inches are shown as bracketted numbers.

**Tolerance** : The general tolerance for dimensions in this brochure is +/- 0,3 (.012).

Dimensions, specifications and data shown in this brochure are subject to change without notice.

# PLK SERIES

## PROFESSIONAL KEYLOCK SWITCHES

### Tapered lock face

#### GENERAL SPECIFICATIONS

- Max. current/voltage rating (resistive) : 0,5A 30VDC
- Life : 10.000 cycles
- Initial contact resistance : 20 mΩ max.
- Insulation resistance : 100 MΩ min.
- Dielectric strength : 750 Vrms.
- Operating temperature : -20°C to +65°C
- Lock type : 5 disc
- Standard hardware supplied : 1 hex nut

#### MATERIALS

- Case : polyester, glass filled
- Bushing : zinc alloy, chrome plated
- Contacts : brass, silver plated

#### PANEL CUT-OUT



Movement	Number of positions	Number of poles	Key withdrawal position	Indexing	Number of keys	Key sets	MODEL NO	Switching diagram
90°	2	1	1-4	90°	2	same	<b>PLKB3220</b>	
90°	2	1	1-4	90°	2	200 different	<b>PLKB3221</b>	
90°	2	1	1	90°	2	same	<b>PLKB3120</b>	
60°	2	2	1-3	60°	2	same	<b>PLKB4220</b>	
60°	2	2	1	60°	2	same	<b>PLKB4120</b>	
180°	3	1	1-4-7	90°	2	200 different	<b>PLKB8321</b>	

#### Dimensions



# PLR SERIES

## PROFESSIONAL MINIATURE ROTARY SWITCHES

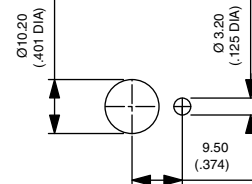
### GENERAL SPECIFICATIONS

- Max. voltage (resistive) : 250V AC/DC
- Max. current : 150mA
- Initial contact resistance : 20 mΩ max.
- Insulation resistance: 1.000 MΩ min.
- Dielectric strength : 1.000 Vrms
- Life : 10.000 cycles
- Operating torque : 8,6 Ncm ±2
- End stop torque : 1,13 Ncm min.
- Fixing torque : 1,1 Ncm max.
- Operating temperature : -30°C to +85°C
- Standard hardware supplied : 1 hex nut and 1 locking ring
- Special accessories (buttons) : see page 7

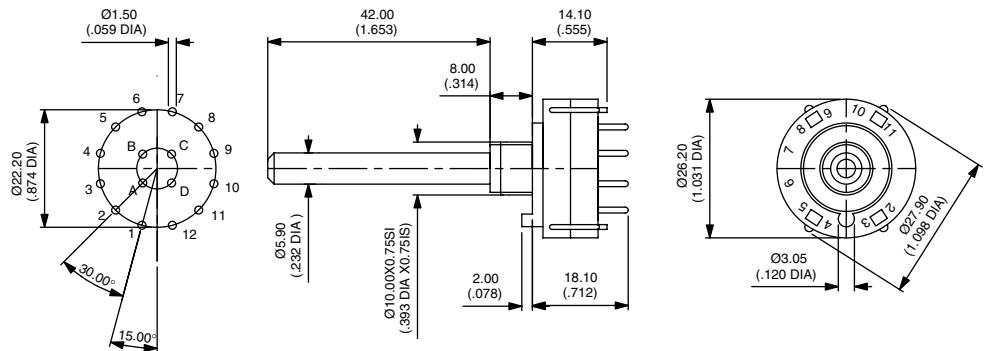
### MATERIALS

- Moulded parts : PA 6/6, glass filled
- Contacts : brass, gold or silver plated, depending on version

### PANEL CUT-OUT



### Dimensions

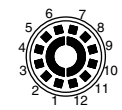


### Available configurations (top view)

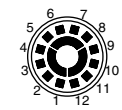
**30° INDEXING (standard)**  
*(models listed opposite)*



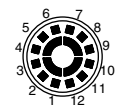
1 pole, 12 pos.



2 poles, 6 pos.

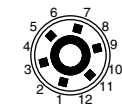


3 poles, 4 pos.

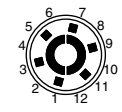


4 poles, 3 pos.

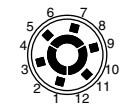
**60° INDEXING**  
*(on request)*



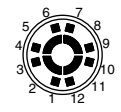
1 pole, 6 pos.



2 poles, 3 pos.

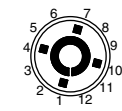


3 poles, 2 pos.

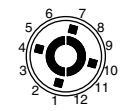


4 poles, 2 pos.

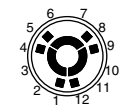
**90° INDEXING**  
*(on request)*



1 pole, 4 pos.



2 poles, 2 pos.



3 poles, 2 pos.

# PLR SERIES

## PROFESSIONAL MINIATURE ROTARY SWITCHES

### Models with 30° indexing

- Metric type
- Spindle diameter : 6 mm

- Spindle length : 42 mm
- Bushing : L 8 mm, M10 x 0,75

Preferred

DESCRIPTION	Contact material	Shorting	Non-shorting
<b>1 pole, 12 positions</b>			
Solder lugs	Silver plated	PLR3259	PLR3249
	Gold plated	PLR3728	PLR3723
PCB pins	Silver plated	PLR3279	PLR3269
	Gold plated	PLR3732	PLR3726
<b>1 pole, 12 positions, continuous rotation</b>			
Solder lugs	Silver plated	PLR3258	PLR3248
	Gold plated	PLR3753	PLR3757
PCB pins	Silver plated	PLR3278	PLR3268
	Gold plated	PLR3754	PLR3758
<b>2 poles, 6 positions</b>			
Solder lugs	Silver plated	PLR3260	PLR3250
	Gold plated	PLR3729	PLR3716
PCB pins	Silver plated	PLR3280	PLR3270
	Gold plated	PLR3733	PLR3693
<b>2 poles, 6 positions, continuous rotation</b>			
Solder lugs	Silver plated	PLR3334	PLR3338
	Gold plated	PLR3755	PLR3759
PCB pins	Silver plated	PLR3339	PLR3333
	Gold plated	PLR3756	PLR3760
<b>3 poles, 4 positions</b>			
Solder lugs	Silver plated	PLR3261	PLR3251
	Gold plated	PLR3730	PLR3734
PCB pins	Silver plated	PLR3281	PLR3271
	Gold plated	PLR3734	PLR3720
<b>4 poles, 3 positions</b>			
Solder lugs	Silver plated	PLR3262	PLR3252
	Gold plated	PLR3731	PLR3725
PCB pins	Silver plated	PLR3282	PLR3272
	Gold plated	PLR3735	PLR3727

# PLRT SERIES

## PROFESSIONAL SUBMINIATURE ROTARY SWITCHES

### Spindle models

#### GENERAL SPECIFICATIONS

- Max. current/voltage rating (resistive) : 0,5A 24VAC - 0,2A 48VAC - 0,3A 30VDC
- Contact resistance :
  - initial : 50 mΩ max.
  - after 10.000 cycles : 100mΩ max
- Insulation resistance : 1.000 MΩ min at 500VDC
- Dielectric strength : 1.000 Vrms
- Life : 10.000 cycles
- Operating torque : 1,4 to 2,8 Ncm
- Operating temperature : -30°C to +65°C
- Accessory (protective cover) : see page 7.

#### MATERIALS

- Case : polyester, glass filled
- Contacts : brass, gold plated
- Terminals : copper alloy, gold plated

#### DIAGRAM



### Model numbers and dimensions



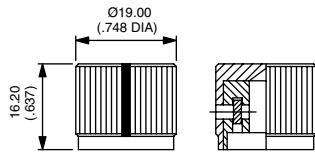
Movement	Number of positions	MODEL NO
360°	8 Continuous rot.	PLRT842
90°	3	PLRT331
135°	4	PLRT431
180°	5	PLRT531
315°	8	PLRT833



# ACCESSORIES

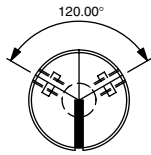
For PLR and PLRT series

## Straight knurl knob for PLR series

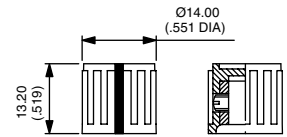


Natural anodized aluminium  
**U6107**

Black anodized aluminium  
**U6106**



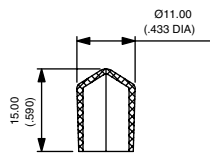
## Ribbed knob for PLR series



Black plastic  
**U6108**



## Protective cover for PLRT series



**U6105**



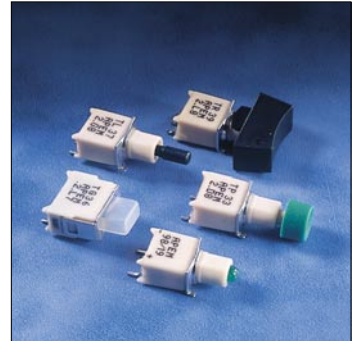
# The APEM subminiature range



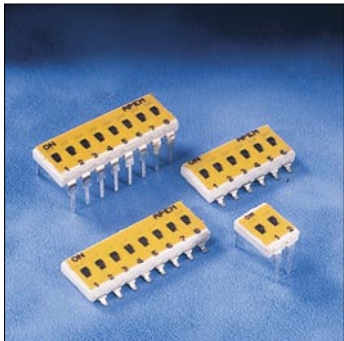
**Z series**



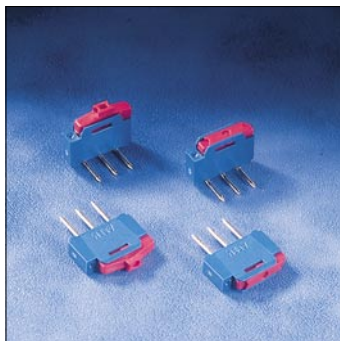
**T series**



**SMT T series**



**IK series**



**NK series**



**PHAP series**



**CR65 series**

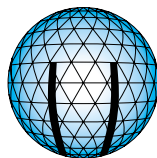


**9000 series**

## Corporate sales

### APEM

Centre d'Affaires Paris Nord - BP 200  
Tour "Le Continental"  
93153 Le Blanc Mesnil Cedex - France  
Tel.: (+33) 1 48 14 92 65 - Fax: (+33) 1 48 14 92 84  
e-mail : apem.com@wanadoo.fr



**A P E M**

## Customer Service and Registered Office

### APEM

55, avenue Edouard Herriot - BP 1  
82303 Caussade Cedex - France  
Tel.: (+33) 5 63 93 14 98 - Fax: (+33) 5 63 93 19 03  
e-mail : commercial@apem.fr  
web : www.apem.fr

PLKPLR0209-A



Компания «Life Electronics» занимается поставками электронных компонентов импортного и отечественного производства от производителей и со складов крупных дистрибьюторов Европы, Америки и Азии.

С конца 2013 года компания активно расширяет линейку поставок компонентов по направлению коаксиальный кабель, кварцевые генераторы и конденсаторы (керамические, пленочные, электролитические), за счёт заключения дистрибьюторских договоров

Мы предлагаем:

- Конкурентоспособные цены и скидки постоянным клиентам.
- Специальные условия для постоянных клиентов.
- Подбор аналогов.
- Поставку компонентов в любых объемах, удовлетворяющих вашим потребностям.
- Приемлемые сроки поставки, возможна ускоренная поставка.
- Доставку товара в любую точку России и стран СНГ.
- Комплексную поставку.
- Работу по проектам и поставку образцов.
- Формирование склада под заказчика.
- Сертификаты соответствия на поставляемую продукцию (по желанию клиента).
- Тестирование поставляемой продукции.
- Поставку компонентов, требующих военную и космическую приемку.
- Входной контроль качества.
- Наличие сертификата ISO.

В составе нашей компании организован Конструкторский отдел, призванный помогать разработчикам, и инженерам.

Конструкторский отдел помогает осуществить:

- Регистрацию проекта у производителя компонентов.
- Техническую поддержку проекта.
- Защиту от снятия компонента с производства.
- Оценку стоимости проекта по компонентам.
- Изготовление тестовой платы монтаж и пусконаладочные работы.



Тел: +7 (812) 336 43 04 (многоканальный)  
Email: [org@lifeelectronics.ru](mailto:org@lifeelectronics.ru)