

LED Reflector Holder round with 5 mm LED



Housing chrome  
 LED red  
 Without pre-resistor with exposed LED and external reflector



Housing black dull  
 LED red  
 Chalice shape with internal reflector



Housing chrome  
 LED green  
 Chalice shape with internal reflector



Housing black dull  
 LED red  
 Exposed LED and external reflector

See below:  
[Approvals and Compliances](#)

**Description**

- Panel Mounting
- Illumination with 5 mm LED
- available with or without series resistor
- Housing chrome plated or black dull
- Solder terminals

**Weblinks**

[pdf data sheet](#), [html datasheet](#), [CAD-Drawings](#), [Detailed request for product](#)

**Technical Data**

**Electrical Data**

|                     |                                       |
|---------------------|---------------------------------------|
| Current consumption | 10 mA with Built-in Multiplier        |
| LED                 | Technical data LED see separate table |

**Climatical Data**

|                           |               |
|---------------------------|---------------|
| Allowable Operation Temp. | -25 to 55 °C  |
| Storage Temperature       | -55 to 100 °C |
| Protection Class          | IP67          |

**Soldering Data**

|                              |  |
|------------------------------|--|
| Solderability                | 235 °C / 2 sec acc. to IEC 60068-2-20 , Test Ta, method 1  |
| Resistance to Soldering Heat | 350 °C / 5 sec acc. to IEC 60068-2-20 , Test Tb, method 1B |

**Material**

|                  |                     |
|------------------|---------------------|
| Housings         | Brass chrome-plated |
| Solder terminals | Tin-Plated Copper   |
| Nut              | Nickel-Plated Brass |
| Sealing          | Nitril rubber       |

**Technical Data LED**

|                                | LED red                   | LED green                 | LED yellow                |
|--------------------------------|---------------------------|---------------------------|---------------------------|
| Let-through current DC IF max. | 30 mA                     | 30 mA                     | 30 mA                     |
| Power Loss PV max.             | 100 mW                    | 100 mW                    | 100 mW                    |
| Forward voltage                | typ. 2.0 V; max. 3.0 V    | typ. 2.4 V; max. 3.0 V    | typ. 2.4 V; max. 3.0 V    |
| Luminous intensity             | min. 6.3 mcd; typ. 10 mcd | min. 6.3 mcd; typ. 10 mcd | min. 6.3 mcd; typ. 12 mcd |
| Viewing angle                  | 60°                       | 60°                       | 60°                       |
| Peak wave length               | typ. 635 nm               | typ. 565 nm               | typ. 585 nm               |
| Reverse voltage                | typ. 15 V                 | typ. 15 V                 | typ. 15 V                 |

**Approvals and Compliances**

Detailed information on product approvals, code requirements, usage instructions and detailed test conditions can be looked up in [Details about Approvals](#)

SCHURTER products are designed for use in industrial environments. They have approvals from independent testing bodies according to national and international standards. Products with specific characteristics and requirements such as required in the automotive sector according to IATF 16949, medical technology according to ISO 13485 or in the aerospace industry can be offered exclusively with customer-specific, individual agreements by SCHURTER.

**Compliances**

The product complies with following Guide Lines

| Identification | Details | Initiator   | Description   |
|----------------|---------|-------------|---|
|                | RoHS    | SCHURTER AG | Directive RoHS 2011/65/EU, Amendment (EU) 2015/863  |
|                | REACH   | SCHURTER AG | On 1 June 2007, Regulation (EC) No 1907/2006 on the Registration, Evaluation, Authorization and Restriction of Chemicals 1 (abbreviated as "REACH") entered into force. |

**Dimension [mm]**

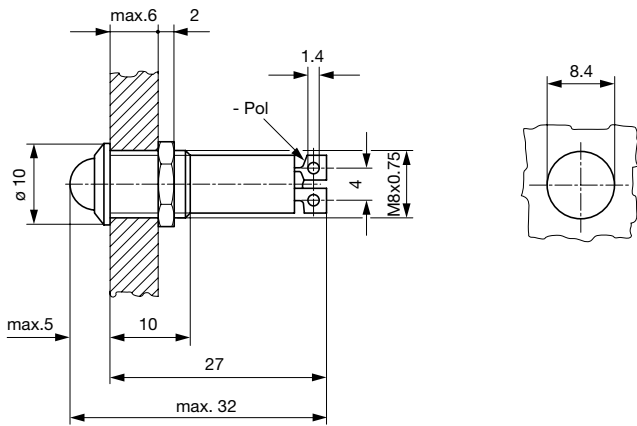
LFM with resistor and internal reflector



LFM without resistor with internal reflector



LFM with exposed LED and resistor and external reflector



**All Variants**

| Type               | Multiplier | Housings      | Supply Voltage | Color LED | Order Number |
|--------------------|------------|---------------|----------------|-----------|--------------|
| Internal Reflector | with       | chrome-plated | 24VDC          | red       | 0035.0607    |
| Internal Reflector | with       | chrome-plated | 24VDC          | green     | 0035.0608    |
| Internal Reflector | with       | chrome-plated | 24VDC          | yellow    | 0035.0609    |
| Outside Reflector  | with       | black dull    | 12VDC          | red       | 0035.0664    |
| Outside Reflector  | with       | black dull    | 12VDC          | green     | 0035.0665    |
| Outside Reflector  | with       | black dull    | 12VDC          | yellow    | 0035.0666    |
| Outside Reflector  | with       | black dull    | 24VDC          | red       | 0035.0667    |
| Outside Reflector  | with       | black dull    | 24VDC          | green     | 0035.0668    |
| Outside Reflector  | with       | black dull    | 24VDC          | yellow    | 0035.0669    |
| Internal Reflector | without    | black dull    | -              | red       | 0035.0726    |
| Internal Reflector | without    | black dull    | -              | green     | 0035.0727    |

| Type               | Multiplier | Housings   | Supply Voltage | Color LED | Order Number |
|--------------------|------------|------------|----------------|-----------|--------------|
| Internal Reflector | without    | black dull | -              | yellow    | 0035.0728    |

■ Most Popular.

Availability for all products can be searched real-time:<https://www.schurter.com/en/Stock-Check/Stock-Check-SCHURTER>

---

**Packaging unit**    50 pcs

---

Компания «Life Electronics» занимается поставками электронных компонентов импортного и отечественного производства от производителей и со складов крупных дистрибьюторов Европы, Америки и Азии.

С конца 2013 года компания активно расширяет линейку поставок компонентов по направлению коаксиальный кабель, кварцевые генераторы и конденсаторы (керамические, пленочные, электролитические), за счёт заключения дистрибьюторских договоров

Мы предлагаем:

- Конкурентоспособные цены и скидки постоянным клиентам.
- Специальные условия для постоянных клиентов.
- Подбор аналогов.
- Поставку компонентов в любых объемах, удовлетворяющих вашим потребностям.
- Приемлемые сроки поставки, возможна ускоренная поставка.
- Доставку товара в любую точку России и стран СНГ.
- Комплексную поставку.
- Работу по проектам и поставку образцов.
- Формирование склада под заказчика.
- Сертификаты соответствия на поставляемую продукцию (по желанию клиента).
- Тестирование поставляемой продукции.
- Поставку компонентов, требующих военную и космическую приемку.
- Входной контроль качества.
- Наличие сертификата ISO.

В составе нашей компании организован Конструкторский отдел, призванный помогать разработчикам, и инженерам.

Конструкторский отдел помогает осуществить:

- Регистрацию проекта у производителя компонентов.
- Техническую поддержку проекта.
- Защиту от снятия компонента с производства.
- Оценку стоимости проекта по компонентам.
- Изготовление тестовой платы монтаж и пусконаладочные работы.



Тел: +7 (812) 336 43 04 (многоканальный)

Email: [org@lifeelectronics.ru](mailto:org@lifeelectronics.ru)