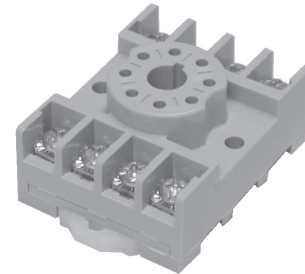


**Sockets & Accessories, KRPA Relays**

- Sockets for relays with 8-pin (octal) and 11-pin (undecal) round plugs
- Screw terminals
- Hold down springs
- Various mounting options



**Approvals**

UL E59244, CSA LR15734

Technical data of approved types on request

**Technical Data**

|                         |                          |
|-------------------------|--------------------------|
| Socket contact material | Spring brass, tin plated |
| Socket body material    |                          |
| 27E122 and 27E123       | Glass-filled polyester   |
| 27E891 and 27E892       | Polyamide                |
| Maximum current         | 10A                      |
| Maximum Voltage         | 300VAC                   |

**Ordering Code for Sockets**

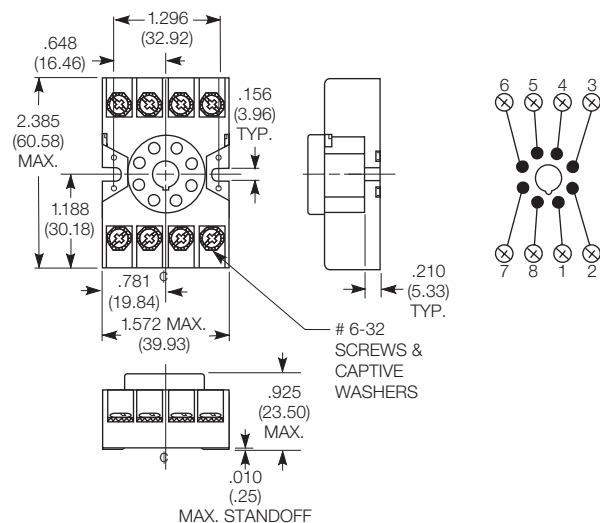


| Product Code | Pins | Terminal type | Mounting         | Part number |
|--------------|------|---------------|------------------|-------------|
| 27E122       | 8    | screw         | panel/rail       | 1393143-6   |
| 27E891       |      |               | snap-on DIN-rail | 2-1419106-3 |
| 27E123       | 11   |               | panel/rail       | 1393143-7   |
| 27E892       |      |               | snap-on DIN-rail | 2-1419106-4 |

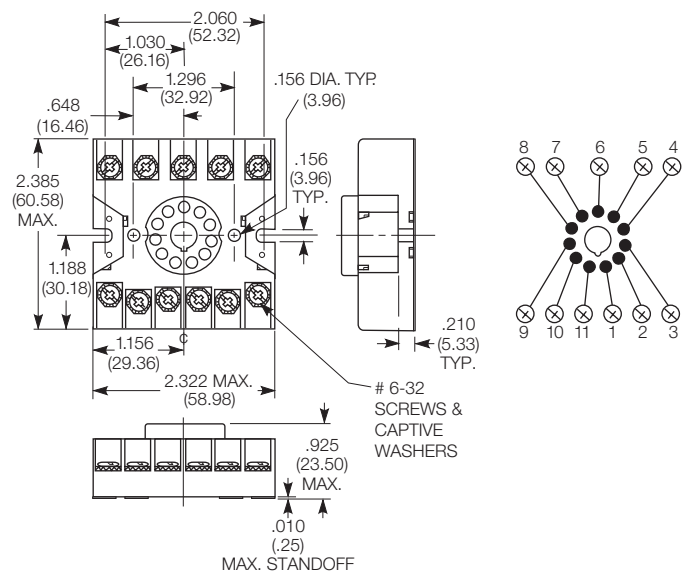
All accessories must be ordered separately.

**Dimensions**

Screw terminal socket for relays with 8-pin octal base 27E122  
Offers screw termination for KRPA relays and other devices with 8-pin octal base. When panel mounting, two #6-32 screws of suitable length are required. When track mounting, two 24A071 retainer clips or two 24A072 retainer clips are required.



Screw terminal socket for relays with 11-pin undecal base 27E123  
Offers screw termination for KRPA relays and other devices with 11-pin undecal base. When panel mounting, two #6-32 screws of suitable length are required. When track mounting, two 24A071 retainer clips or two 24A072 retainer clips are required. —

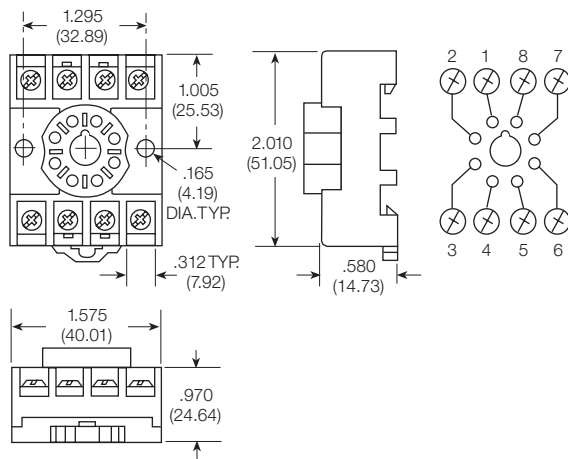


**Sockets & Accessories, KRPA Relays (Continued)**

**Dimensions**

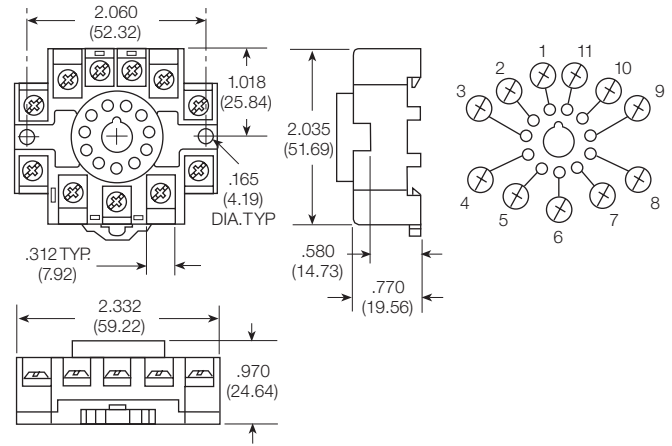
Screw terminal, DIN rail, snap-mount socket 27E891

Offers screw termination for KRPA relays and other devices with 8-pin octal base. This socket is constructed with a spring-loaded latch which allows it to be quickly snapped onto or removed from a DIN or "top hat" style mounting track. No special tools or extra hardware is required for installation. Sockets have M3.5 screw terminals which accept up to two #12 AWG wires.



Screw terminal, DIN rail, snap-mount socket 27E892

Offers screw termination for KRPA relays and other devices with 11-pin undecal base. This socket is constructed with a spring-loaded latch which allows it to be quickly snapped onto or removed from a DIN or "top hat" style mounting track. No special tools or extra hardware is required for installation. Sockets have M3.5 screw terminals which accept up to two #12 AWG wires.



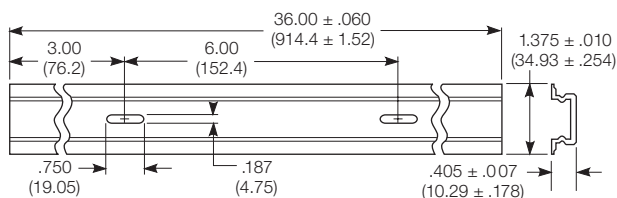
**Ordering Code for Accessories**

| Product Code | Description   | Part number |
|--------------|---|-------------|
| 20C318       | Snap-in relay hold down spring for use with KRPA, KCP and R10-T relay and KRPA sockets listed on these pages.   | 4-1393159-8 |
| 20C176       | Relay hold down spring for use with KRPA, KCP and R10-T relays and various hard mount KRPA sockets. Is held in place by mounting hardware (not supplied). | 3-1393159-3 |
| 20C206       | Relay hold down spring for use with KRP3 and KAP relays and various hard mount KRPA sockets. Is held in place by mounting hardware (not supplied).        | 1419111-1   |
| 20C419       | Snap-in relay hold down spring (coil type) for use with various relays and various hard mount KRPA sockets.   | 5-1393159-0 |
| 24A110       | Mounting track  | 1419111-6   |
| 24A071       | Steel mounting clip with #6-32 screw - use with sockets on 24A110 track   | 1419111-5   |
| 24A072       | Plastic twist mounting clip - use with sockets on 24A110 track  | 5-1393159-4 |
| 40G432       | Plastic insulator - use with 24A071 to make end clip for 24A110 track   | 9-1393159-5 |

All accessories must be ordered separately.

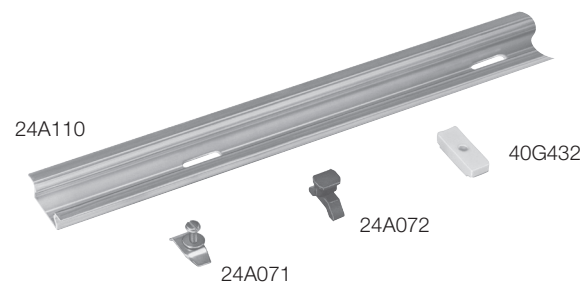
**Dimensions**

24A110 DIN rail style mounting track



24A110 mounting track is designed to accept snap-mount sockets, as well as other P&B screw terminal sockets. Track is made of lightweight, sturdy extruded aluminum and is shipped in three-foot (914cm) lengths with mounting holes on six-inch (152mm) centers. Track can be cut to shorter lengths or used end-to-end.

Track and mounting accessories



Компания «Life Electronics» занимается поставками электронных компонентов импортного и отечественного производства от производителей и со складов крупных дистрибьюторов Европы, Америки и Азии.

С конца 2013 года компания активно расширяет линейку поставок компонентов по направлению коаксиальный кабель, кварцевые генераторы и конденсаторы (керамические, пленочные, электролитические), за счёт заключения дистрибьюторских договоров

Мы предлагаем:

- Конкуренеспособные цены и скидки постоянным клиентам.
- Специальные условия для постоянных клиентов.
- Подбор аналогов.
- Поставку компонентов в любых объемах, удовлетворяющих вашим потребностям.
- Приемлемые сроки поставки, возможна ускоренная поставка.
- Доставку товара в любую точку России и стран СНГ.
- Комплексную поставку.
- Работу по проектам и поставку образцов.
- Формирование склада под заказчика.
- Сертификаты соответствия на поставляемую продукцию (по желанию клиента).
- Тестирование поставляемой продукции.
- Поставку компонентов, требующих военную и космическую приемку.
- Входной контроль качества.
- Наличие сертификата ISO.

В составе нашей компании организован Конструкторский отдел, призванный помогать разработчикам, и инженерам.

Конструкторский отдел помогает осуществить:

- Регистрацию проекта у производителя компонентов.
- Техническую поддержку проекта.
- Защиту от снятия компонента с производства.
- Оценку стоимости проекта по компонентам.
- Изготовление тестовой платы монтаж и пусконаладочные работы.



Тел: +7 (812) 336 43 04 (многоканальный)

Email: [org@lifeelectronics.ru](mailto:org@lifeelectronics.ru)